

LATITUDE 39° 12' 30"



0.6.9.2
2.10.2

LONGITUDE 80° 20' 00"

7'5 OGIS topo location

7.5' loc _____ 15' loc _____
(calc.) _____

Company Philadelphia Oil Co.

Farm W. B. LOWTHER
(6063)

Quad Mount Clare 7 1/2

County Harrison

District Union

WELL LOCATION MAP

File No. 033-30316

Union District, Harrison County, W. Va.

316-17

By Philadelphia Oil Co., Clarksburg, W. Va.

On 51.61 acres, Map Ref., Weston N.W.2-4; surface and minerals
owned by E. J. Stout, 420 Duff Ave., Clarksburg, W. Va.

Well completed Nov. 6, 1919.

Elevation, 1285' L.

10" casing, 195' (cemented); 8 $\frac{1}{4}$ " , 1114'; 6 $\frac{5}{8}$ " , 1669'.Bottom hole packer, 8 $\frac{1}{4}$ x 6 $\frac{5}{8}$, set at 1669'.

Coal was encountered at 100-103 and 130-135'.

Abandonment reported to Dept. of Mines Apr. 17 and 24, 1936.

Located 6-30-1919; began drg. 9-19-1919; comp. drg. 11-6-1919.

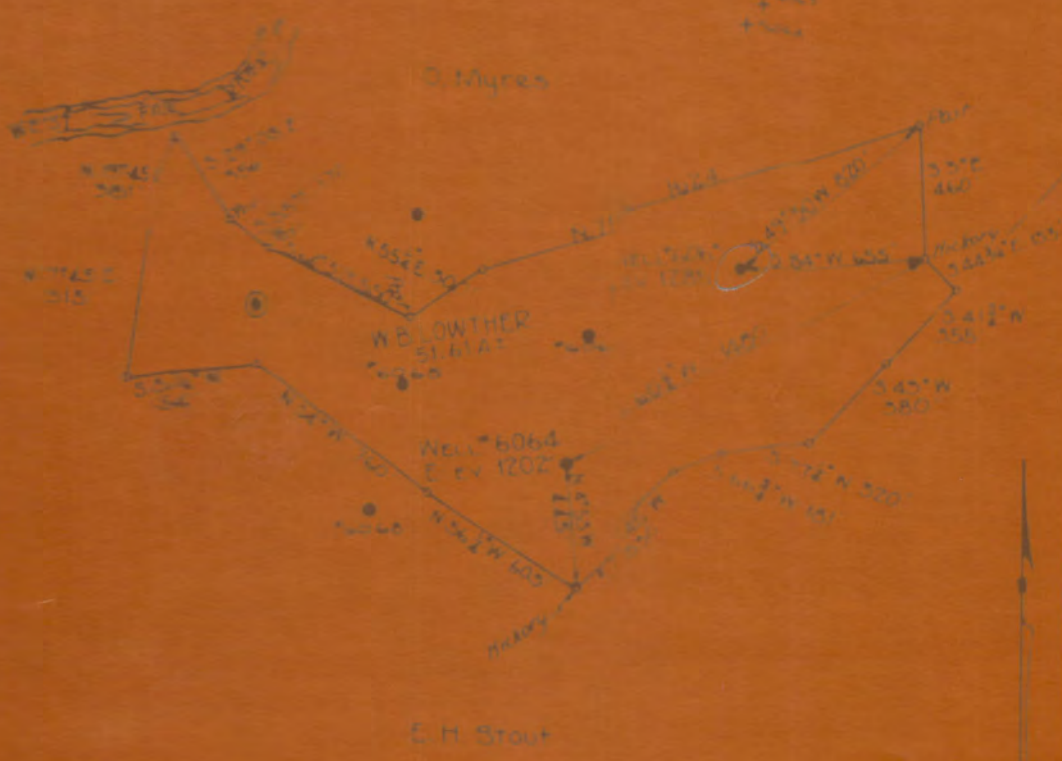
Purchased from Hope Cons. & Ref. Co.

Well was shot at 2429-2455', with 80 qts.

Oil well. 6 $\frac{5}{8}$ " hole.

Record to RCT from D. G. Courtney (Dept. of Mines) 5-5-37.

	Top.	Bottom.	Thickness.
Unrecorded	0	- 100	100
Coal	100	- 103	3
Unrecorded	103	- 130	37
Pittsburgh Coal	130	- 135	5
Unrecorded	135	- 642	507
Big Dunkard Sand	642	- 667	25
Unrecorded	667	- 673	6
Gas Sand	673	- 735	62
Unrecorded	735	- 820	85
1st Salt Sand	820	- 860	40
Unrecorded (gas, 890')	860	- 929	69
2nd Salt Sand	929	- 1160	231
Unrecorded	1160	- 1170	10
Sand	1170	- 1290	120
Unrecorded	1290	- 1595	305
Little Lime	1595	- 1605	10
Pencil Cave	1605	- 1625	20
Big Lime	1625	- 1665	40
Big Injun Sand (gas, 1777')	1665	- 1805	140
Unrecorded	1805	- 1840	35
Berea Grit?	1840	- 1890	50
Unrecorded	1890	- 2055	165
Gantz? Sand	2055	- 2105	50
Unrecorded	2105	- 2142	37
50-Ft. Sand	2142	- 2225	83
Unrecorded	2225	- 2239	14
30-Ft. Sand	2239	- 2270	31
Unrecorded	2270	- 2370	100
Gordon Stray Sand	2370	- 2400	30
Unrecorded	2400	- 2425	25
Gordon Sand (gas, 2451'; oil, 2440-42'; oil, 2447-49')	2425	-	30
Total depth		2455	



LOCATION OF WELLS #6064 & #6064 TO BE ABANDONED

Company PRACOR OIL CO.
 Address IND BANK BLDG CHARLESTON, W. VA
 Farm A. B. LOWTHER
 Tract None Sub. Lease No. 1202
 Well Farm No. 6064 Well No. 6064
 Surveying W. H. H. H.
 County MASON

STATE OF WEST VIRGINIA
 DEPARTMENT OF MINES
 OIL AND GAS DIVISION
 CHARLESTON
 WELL LOCATION MAP
 FILE NO. MAV-316
 UNDER ACT OF APRIL 20, 1917, CHAP. 101
 PUBLIC LAWS