

0.72a

Latitude 39 20

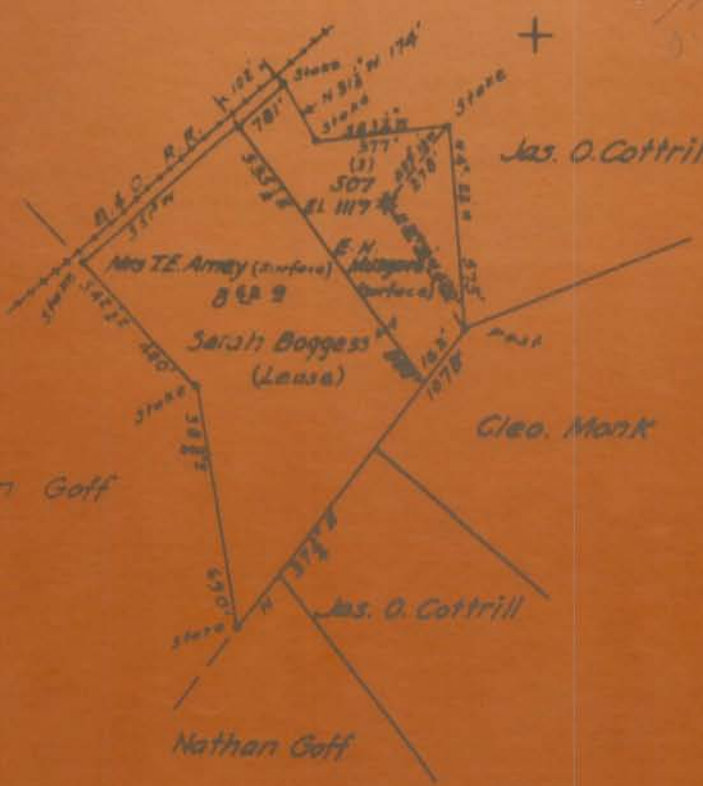
0.72a  
= 0.72 miles

$$\frac{2300}{0.72} = 3170$$

$$\frac{1700}{0.72} = 2360$$

Longitude 90 20

0.72a





## WEST VIRGINIA DEPARTMENT OF MINES

OIL AND GAS DIVISION

## PRELIMINARY DATA SHEET NO. 1

File No. \_\_\_\_\_ Well No. 107

ROBERTS Coal Company Company of W. Va. Dist. No. 12

Clarksburg, W. Va. as the DATA SUCCESSORS Perm

containing 100 acres, Location \_\_\_\_\_

Clarksburg District, in Harrison County, West Virginia

The surface of the above tract is owned in fee by Ed. C. Roberts

of Clarksburg, W. Va. address, and the mineral rights are owned by  
~~ROBERTS COAL COMPANY~~ of Clarksburg, W. Va.

The oil and gas privileges are held under lease by the above named company, and this well is drilled under permit  
 No. \_\_\_\_\_ issued by the West Virginia Department of Mines, Oil and Gas Division

Depth of surface at top of well 1117 feet

The number of feet of the different sized casings used in the well:

Size	Material	Length (feet)	Weight (lbs)	Notes
10 1/2"	Steel	1117	1117	Wood casing in
8"	Steel	100	100	Steel casing
6"	Steel	100	100	Steel casing
4"	Steel	100	100	Steel casing
3"	Steel	100	100	Steel casing
2 1/2"	Steel	100	100	Steel casing
2"	Steel	100	100	Steel casing
1 1/2"	Steel	100	100	Steel casing
1"	Steel	100	100	Steel casing
3/4"	Steel	100	100	Steel casing
1/2"	Steel	100	100	Steel casing
3/8"	Steel	100	100	Steel casing
1/4"	Steel	100	100	Steel casing

Tools used as follows: \_\_\_\_\_



# RESERVE GAS COMPANY

443 WEST MAIN STREET

CLARKSBURG, W. VA.

January 19, 1937.

State Department of Mines,  
Oil and Gas Division,  
Charleston, W. Va.

Sir:-

On May 28, 1936, we filed with your department a notice of intention to plug and abandon Reserve Gas Company's well No. 207, in Clark District, Harrison County, on the Berea Success Farm, Permit Mar-203.

In cleaning this well out preparatory to abandonment it has been made commercially productive and we have concluded not to abandon the well. Therefore, we desire to withdraw our notice of intention to plug and abandon.

Yours very truly,

\_\_\_\_\_  
Asst. General Superintendent.

cc - Chief Coal Co.



