

LATITUDE 39° 15' 00"

LONGITUDE 80° 17' 30"



2.48d

1.60w

7'5 OGIS topo location

7.5' loc \_\_\_\_\_

15' loc \_\_\_\_\_  
(calc.) \_\_\_\_\_

Company H N G Co. (6918)

Farm D. O. Booth

Quad Mount Aire 7 1/2

County Harrison

District Elk

WELL LOCATION MAP

File No. 033-30288

288-A

Elk District, Harrison County, W. Va.  
 By Hope Natural Gas Co., 445 W. Main St., Clarksburg, W. Va.  
 On 20 acres, surface owned by Alphonso Stout, R. 1, Mt. Clare, W. Va.;  
 owner of mineral rights unknown.  
 Elevation, 1231' L.  
 10" casing, 280'; 6-5/8", 1613'; 5-3/16", 2317'.  
 Coal was encountered at 55' (estimated 5' thick).  
 Abandonment reported to Dept. of Mines Feb. 5, 1936.  
 Well was not shot.  
 Salt water at 790' and 1950'.  
 Gas well; now exhausted.

	Top.	Bottom.	Thickness.
Coal	55	- No record	
Little Dunkard Sand	573	- 595	22
Big Dunkard Sand	620	- 657	37
Gas Sand	678	- 735	57
First Salt Sand (water, 790')	790	- 835	45
Second Salt Sand	845	- 972	127
Sand	1000	- 1035	35
Sand	1156	- 1170	14
Red rock	1180	- 1380	200
Little Lime	1398	- 1413	15
Big Lime	1443	- 1506	63
Big Injun Sand	1506	- 1680	174
Gantz? Sand (water, 1950')	1920	- 1965	45
Fifty-foot Sand	1973	- 2080	107
Thirty-foot Sand (gas, 2107')	2083	- 2125	42
Red rock	2135	- 2175	40
Gordon Stray Sand	2195	- 2218	23
Red rock	2218	- 2255	37
Gordon Sand	2255	- 2288	33
Fourth Sand	2309	- 2333	24
Fifth Sand (gas, 2415-2420')	2410	- 2438	28
Total depth		2442	

Have  
288-A

D. O. Booth No. 2 Well Record (G.C.38)  
District, Harrison County,

completed, Mar. 30, 1916; elevation, \_\_\_\_\_; authority, Grasselli Chemical Company;

	Top Feet	Bottom Feet
Conductor . . . . .		16
Coal . . . . .		55
Sand . . . . .	205	250
Sand . . . . .	305	345
Sand . . . . .	375	413
Sand, Little Dunkard . . . . .	573	595
Sand, Big Dunkard. . . . .	620	657
Sand, Gas . . . . .	678	735
Coal . . . . .	780	785
(5 bailers water, 790')		
Sand, First Salt . . . . .	790	835
Coal . . . . .	835	840
Sand, Second Salt. . . . .	845	972
Sand . . . . .	1000	1035
Sand . . . . .	1156	1170
Red rock . . . . .	1180	1380
Little Lime . . . . .	1388	1413
Big Lime . . . . .	1443	1506
Sand, Big Injun. . . . .	1506	1618
Sand, Gants (water, 1950'). . . . .	1920	1965
Sand, Fifty-foot . . . . .	1973	2080
Sand, Thirty-foot (gas, 2107'; steel line) . . . . .	2083	2125
Red rock . . . . .	2135	2175
Sand, Stray . . . . .	2195	2218
Red rock . . . . .	2218	2255
Sand, Gordon . . . . .	2255	2288
Sand, Fourth . . . . .	2309	2333
Sand, Fifth (gas, 2415'; 2420'; steel line) . . . . .	2410	2438
Total Depth . . . . .		2442

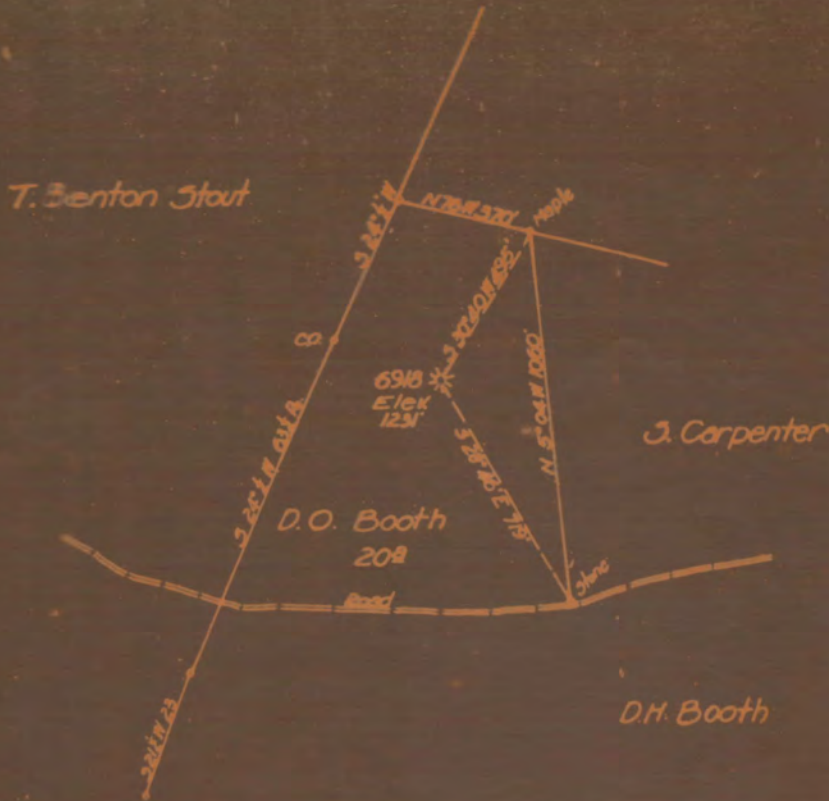
10" csg., 280'; 8 1/4" csg., 980'; 6 5/8" csg., 1613'; 5 3/16" csg., 2317';  
2" tubing, 2442ft.

Tested Mar. 29, 0.6 water in 6 5/8" pipe; volume, 1,234,912 cu.ft. in  
Fifth Sand.  
Rock Pressure, Maxak April 8, 1916, 835 lbs.

WELL No 6918  
 HOPE NATURAL GAS Co.  
 D.O. BOOTH  
 ELK

of the  
 Chadsburg, W. Va., on the  
 Farm consisting of 20 Acres  
 County, W. Va.

District HARRISON



LEGEND

- Location
- Oil Well
- ⊙ " " Aband
- ⊛ Gas Well
- ⊗ " " Aband
- ⊕ Dry Hole

11112-2-3 A

6918-2-336 Field Book No. 11112

Scale 1" = 40'

19

ENGINEERS CERTIFICATE

I, the undersigned, hereby certify that this map is correct and shows all the information to the best of my knowledge and belief, required by the oil and gas section of the mining laws of West Virginia.