

Sardis District, Harrison County, W. Va.

- Israel H. Beren, Marietta, Ohio. (324 Second St.)

- On 13.75 acres, surface owned by R. T. Cunningham, RFD 2, Box 48,  
- Wallace, W. Va., and oil rights by S. G. Hardman of Station C,  
- Clarksburg, W. Va., and coal rights by Mary M. Ewing et al.,  
- Pittsburgh, Pa.

Well completed April 9, 1914.

276-A

Elevation, 1329' L.

13" conductor, 16'; 10" casing, 300'; 6-5/8", 1892'; 5-3/16", 2624'.

Bottom hole packer, 3/4" x 6-5/8, set at 1892'.

Coal was encountered at 556-563.

Abandonment reported to Dept. of Mines Oct. 8, 1935.

Well located Dec. 15, 1913; began drilling Jan. 23, 1914; completed  
drilling April 9, 1914.

Well was shot at 2754-2755-2756-2757-2755.

Fresh water at 120 and 1484'.

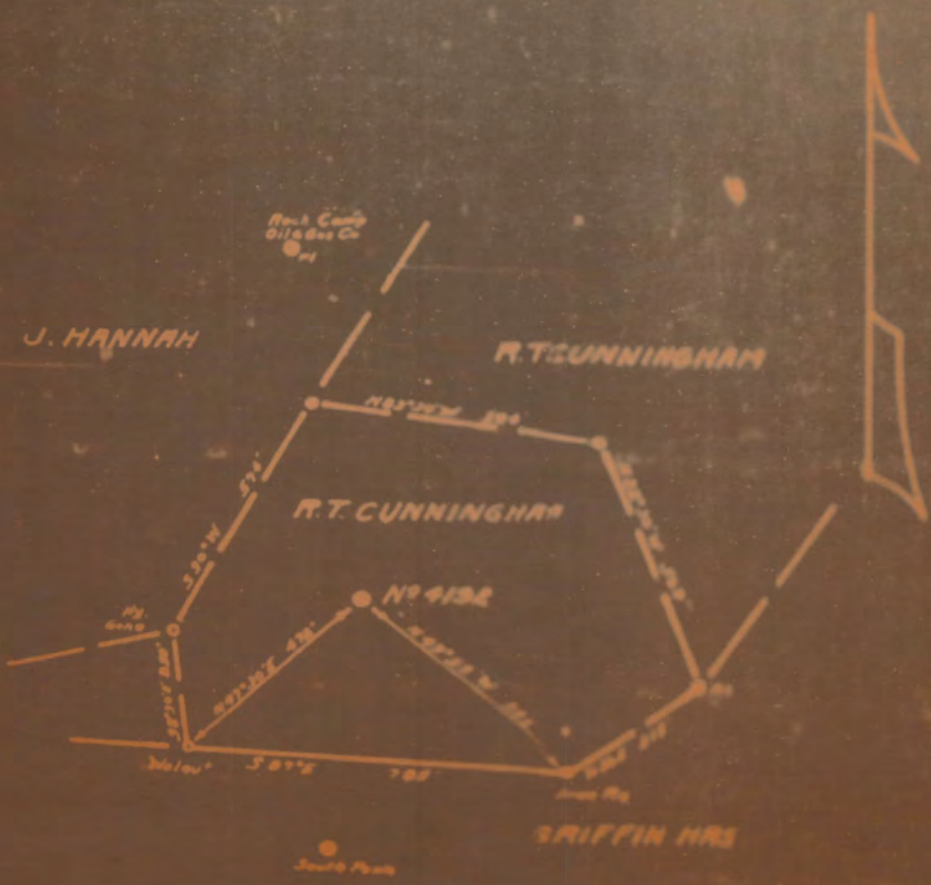
	Top.	Bottom.
Slate	0	115
Sand (water, 120')	115	190
Slate, red rock, lime	190	440
Slate-shells	440	490
Lime and slate	490	556
Pittsburgh Coal (water in Pittsburgh Coal, 4 bailers)	556	563
Slate-shells	563	650
Red rock, lime, shells	650	923
Little Dunkard Sand	923	943
Slate	943	965
Big Dunkard Sand	965	1015
Slate	1015	1032
Sand	1032	1060
Slate	1060	1070
Gas Sand	1070	1205
Slate-shells	1205	1255
Sand	1255	1360
Slate	1360	1388
Sand	1388	1415
Slate	1415	1446
Sand (water, 1484'; 3 bailers)	1446	1550
Slate-shells	1550	1675
Lime and red rock	1675	1837
Sand	1837	1888
Lime-slate	1888	1896
Big Lime	1896	1955
Big Injun Sand	1955	2039
Lime	2039	2300
Slate-shell	2300	2369
Sand shells	2369	2410
Lime shells	2410	2486
50-Ft. Sand (gas, 2490')	2486	2531
Slate	2531	2555
30-Ft. Sand	2555	2580
Slate shells	2580	2600
Red rock	2600	2614
Gordon Stray Sand	2614	2629
Red rock	2629	2631
Sand	2631	2650
Slate	2650	2652

S. G. HARDMAN ET AL. NO. 4192 WELL (Continued).

	Top.	Bottom.
Gordon Sand	2652	- 2691
Slate	2691	- 2694
4th Sand	2694	- 2730
Slate	2730	- 2735
Sand (oil, 2749-2752')	2735	- 2762
Total depth		2762

PHILADELPHIA OIL COMPANY PITTSBURGH PA.

LEASE NO. 7020 LESSOR J. G. HARDMAN ACRES 13.78  
DISTRICT SARDIS COUNTY HARRISON STATE W. VA.  
QTR. QUADRANGLE CLARKSBURG SW 1<sup>st</sup> DATE JUNE 26 1933 NO. OF LEASE 1  
LEASE EXPIRES \_\_\_\_\_ P. RESERVATION \_\_\_\_\_ ELEVATION 1369'



MAP 276-A  
SCALE 1" = 200'

ENGINEER'S CERTIFICATE

I, THE UNDERSIGNED, HEREBY CERTIFY THAT THIS MAP IS CORRECT AS SHOWN AND THE INFORMATION IS THE BEST OF MY KNOWLEDGE AND BELIEF. RECEIVED BY THE DIV. AND GAD SECTION OF THE MINES AND GEOL. DEPT. OF WEST VIRGINIA.

James P. [Signature]