

LATITUDE 39° 20' 00"

00' 02" 08 LONGITUDE



2.32  
0.84W

7'5 OGIS topo location

7.5' loc \_\_\_\_\_

15' loc 2325  
(calc.) 0.84W

Company HNG Co (7612)

Farm M.J. Francis Peirs

Quad Clarksburg 7'2 + 15'5C

County Harrison

District Coal

WELL LOCATION MAP

File No. 033 - 30233

Coal District, Harrison County, W.Va. 233-A  
 By Hope Natural Gas Co., 445 W. Main St., Clarksburg, W. Va.  
 On Lot No. 47, Clarksburg, W. Va.; surface owned by M. J. Francis  
 Heirs, Clarksburg, W. Va.

Elevation, 1013' L.

6-5/8" casing, 1350'; 6-5/16", 2024'.

Starts below coal (Pittsburgh).

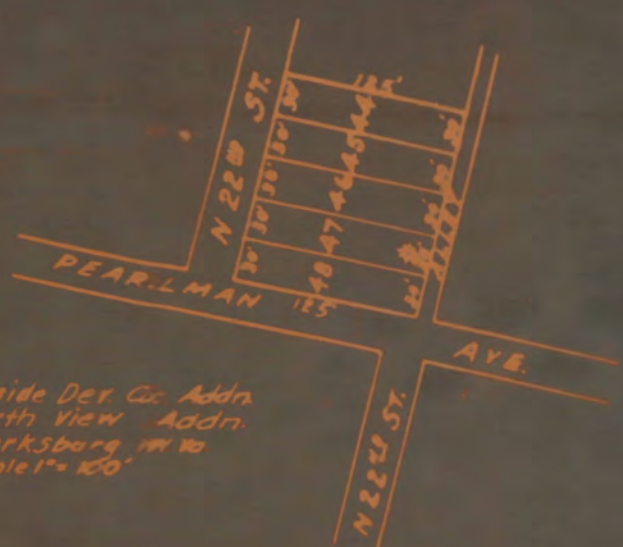
Abandonment reported to Dept. of Mines March 13, 1935.

Well was not shot.

Water at 695-700'.

Gas well; now exhausted to extent that it is no longer commercially  
 productive.

	Top.	Bottom.	Thickness.
Dunkard Sand	435	- 510	75
Gas Sand	565	- 630	65
First Salt Sand (water, 695-700')	670	- 735	65
Second Salt Sand	794	- 836	42
Third Salt Sand	845	- 950	105
Maxton Sand	1160	- 1220	60
Little Lime	1313	- 1325	12
Pencil Cave	1325	- 1333	8
Big Lime	1333	- 1378	45
Big Injun Sand (gas, 1390-1400')	1378	- 1501	123
Fifty-foot Sand (gas, 1900-1905'; gas, 1920-1925')	1874	- 1952	78
Thirty-foot Sand	1954	- 1997	43
Gordon Stray Sand	2007	- 2029	22
Gordon Sand	2092	- 2100	8
Fourth Sand	2165	- 2205	40
Fifth Sand (gas, 2344-2346'; gas, 2350-2357')	2337	- 2375	38



Riverside Dev. Co. Addr.  
 To North View Addr.  
 To Clarksburg HWY No.  
 Scale 1" = 100'

- LEGEND
- Location
  - Oil Well
  - ⊙ - - - - - Ahead
  - ⊗ Gas Well
  - ⊙ - - - - - Ahead
  - ⊕ Dry Hole

Field Book No. 580 P. 17  
 Scale 1" = 40'  
 Mar. 7, 1935

HAR-233-A

ENGINEERS CERTIFICATE

I, the undersigned, hereby certify that this map is correct and shows all the information to the best of my knowledge and belief, required by the oil and gas section of the mining laws of West Virginia.

**W. C. HARRIS**  
 ENGINEER