

LATITUDE 39° 27' 30"

00° 00' 00"

LONGITUDE



1.524
0.302

7.5 OGIS topo location

7.5' loc _____

15' loc _____
(calc.) _____

Company South Penn

Farm Effie Shrader #2

Quad Folsom 7 1/2

County Harrison

District Sardis

WELL LOCATION MAP

File No. 033 - 30158

EFFIE SHRADER NO. 2 WELL.

No. 152 O.F.-Harrison.

0772

158A

Sardis District, Harrison County, W. Va.

By South Penn Oil Co., P. O. Drawer 1255, Pittsburgh, Pa.

On 38 acres, surface owned by Everett Hall, 564 Bank St., Salem,

W. Va., and mineral rights by Effie M. Shrader et al.,

Shinnston, W. Va.

Elevation, 1381' L.

16' conductor; 10" casing, 469'; 8 $\frac{1}{4}$ "¹, 1682'; 6-5/8"², 2496';5-3/16"³, 2712'.

Coal was encountered at 1190-1198'.

Abandonment reported to Dept. of Mines March 25, 1933.

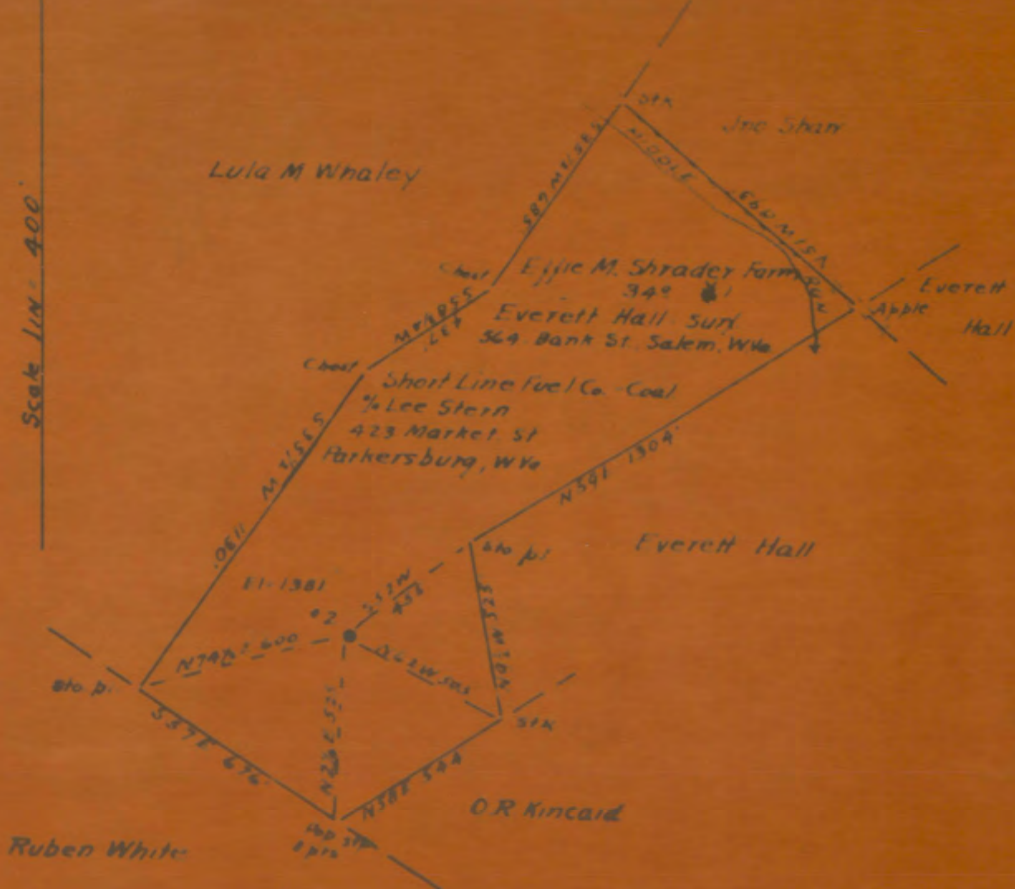
Well was shot Aug. 17, 1904, with 20 qts.; June 22, 1908, with 30

qts.; Nov. 23, 1920, with 40 qts.; and Dec. 14, 1920, with 40 qts.

Oil well.

| | Top. | Bottom. |
|--------------------------------|------|---------|
| Wood conductor | 0 | - 16 |
| Pittsburgh Coal | 1190 | - 1198 |
| Little Dunkard Sand | 1570 | - 1585 |
| Big Dunkard Sand | 1580 | - 1810 |
| Gas Sand | 1932 | - 1965 |
| Salt Sand | 2150 | - 2258 |
| Maxton Sand | 2285 | - 2400 |
| Pencil Cave | 2400 | - 2408 |
| Big Lime | 2408 | - 2455 |
| Big Injun Sand (gas, 2496') | 2455 | - 2610 |
| Upper Thirty-foot Sand (Berea) | 2910 | - 2930 |
| Fifty-foot Sand | 3026 | - 3066 |
| Lower Thirty-foot Sand | 3128 | - 3164 |
| Stray Sand | 3178 | - 3243 |
| Gordon Sand (oil, 3263') | 3253 | - 3290 |
| Total depth | | 3293 |

Scale 1 in. = 400'



ENGINEER'S CERTIFICATE.

I, the undersigned, hereby certify that this Map is correct and shows all the information to the best of my knowledge and belief, required by the oil and gas section of the Mining Laws of West Virginia.

Frank Goodson
ENGINEER.

Acknowledged before me, a Notary Public of Allegheny County, Pa., this 25th day of March, 1933.

John F. Wiegman
Notary Public.

JOHN F. WIEGMAN, NOTARY PUBLIC
BY COMMISSION EXPIRES MAR. 30, 1935

H-150-A

Well No. 2, - Effie Shrader Farm.

FORMATION RECORD

| Name | Color | Character | Oil, Gas or Water | Top | Bottom | Thickness | Total Depth | Remarks |
|------------------------|-------|-----------|----------------------|------|--------|-----------|----------------|---------|
| Wood Conductor | | | | | 16 | | | |
| Pittsburgh Coal | | | | 1190 | 1198 | | | |
| Little Dunkard Sand | | | | 1570 | 1585 | | | |
| Big Dunkard Sand | | | | 1680 | 1810 | | | |
| Gas Sand | | | | 1932 | 1965 | | | |
| Salt Sand | | | | 2150 | 2258 | | | |
| Marion Sand | | | | 2285 | 2400 | | | |
| Pencil Cave | | | | 2400 | 2408 | | | |
| Big Lime | | | | 2408 | 2455 | | | |
| Big Hunjan Sand | | | | 2455 | 2610 | | | |
| Upper Thirty Foot Sand | | | | 2910 | 2930 | | | |
| Fifty Foot Sand | | | | 3026 | 3086 | | | |
| Lower Thirty Foot Sand | | | | 3128 | 3164 | | | |
| Stray Sand | | | | 3178 | 3243 | | | |
| Gordon Sand | | | | 3253 | 3290 | | | |
| | | | Gas | 2496 | | | | |
| | | | Oil | 3263 | | | | |
| Total Depth | | | | | | | 3293 | |

Well was ~~drilled~~ shot 8-17-04, - 20 qts. 11-23-20, - 40 qts.
 6-22-08, - 30 qts. 12-14-20, - 40 qts.
 feet; well was shot at

Spent French water at feet; fresh water at feet

Well was producing hole.

March 25, 1933.

Date

Approved

SOUTH PENN OIL COMPANY,

By *J. K. Mum* Superintendent.

Owner

NOTE: All bottom formations must be noted as indicated above and all key-rocks and oil and gas sands must be recorded under their correct geological names in the district as well as any local names commonly used in the district for such strata.