



---

west virginia department of environmental protection

---

Office of Oil and Gas  
601 57<sup>th</sup> Street, S.E.  
Charleston, WV 25304  
(304) 926-0450  
fax: (304) 926-0452

Harold D. Ward, Cabinet Secretary  
[www.dep.wv.gov](http://www.dep.wv.gov)

Thursday, September 28, 2023  
PERMIT MODIFICATION APPROVAL  
Horizontal 6A / New Drill

HG ENERGY II APPALACHIA, LLC  
5260 DUPONT ROAD

PARKERSBURG, WV 26101

Re: Permit Modification Approval for SCHOEN 1205 S-10H  
47-033-06010-00-00

**Lateral Extension/ Casing Changes**

HG ENERGY II APPALACHIA, LLC

The Office of Oil and Gas has reviewed the attached permit modification for the above referenced permit. The attached modification has been approved and well work may begin. Please be reminded that the oil and gas inspector is to be notified twenty-four (24) hours before permitted well work is commenced.

If there are any questions, please feel free to contact me at (304) 926- 0450.

James A. Martin  
Chief

Operator's Well Number: SCHOEN 1205 S-10H  
Farm Name: GEORGE & ROSEANNE SCHOEN  
U.S. WELL NUMBER: 47-033-06010-00-00  
Horizontal 6A New Drill  
Date Modification Issued: 09/28/2023

Promoting a healthy environment.

09/29/2023

WW-6B  
(04/15)

API NO. 47- 033 - 06010  
OPERATOR WELL NO. Schoen 1205 S-10H  
Well Pad Name: Schoen 1205

STATE OF WEST VIRGINIA  
DEPARTMENT OF ENVIRONMENTAL PROTECTION, OFFICE OF OIL AND GAS  
WELL WORK PERMIT APPLICATION

1) Well Operator: HG Energy II Appalachia, L.P. 494519932 Harrison Grant Mount Clare 7.5'  
Operator ID County District Quadrangle

2) Operator's Well Number: Schoen 1205 S-10H Well Pad Name: Schoen 1205

3) Farm Name/Surface Owner: George Schoen Public Road Access: McWhorter Road / SR25

4) Elevation, current ground: 1410' Elevation, proposed post-construction: 1407'

5) Well Type (a) Gas  Oil  Underground Storage   
Other

(b) If Gas Shallow  Deep   
Horizontal

6) Existing Pad: Yes or No No

7) Proposed Target Formation(s), Depth(s), Anticipated Thickness and Expected Pressure(s):  
Marcellus at 7214' / 7315' and 101' in thickness. Anticipated pressure at 4314#.

8) Proposed Total Vertical Depth: 7230'

9) Formation at Total Vertical Depth: Marcellus

10) Proposed Total Measured Depth: 30,458'

11) Proposed Horizontal Leg Length: 21,574'

12) Approximate Fresh Water Strata Depths: 135', 480', 640', 728'

13) Method to Determine Fresh Water Depths: Nearest offset well data

14) Approximate Saltwater Depths: 1730, 1780, 2010

15) Approximate Coal Seam Depths: 501, 650', 730', 736' (Surface casing is being extended to cover the coal in the DTI Storage Field)

16) Approximate Depth to Possible Void (coal mine, karst, other): None

17) Does Proposed well location contain coal seams directly overlying or adjacent to an active mine? Yes  No

(a) If Yes, provide Mine Info: Name: \_\_\_\_\_  
Depth: \_\_\_\_\_  
Seam: \_\_\_\_\_  
Owner: \_\_\_\_\_

RECEIVED  
Office of Oil and Gas  
SEP 25 2023  
WV Department of  
Environmental Protection

CK# 040619  
\$ 7500

WW-6B  
(04/15)

API NO. 47- 033 - 06010  
 OPERATOR WELL NO. Schoen 1205 S-10H  
 Well Pad Name: Schoen 1205

18)

**CASING AND TUBING PROGRAM**

TYPE	Size (in)	New or Used	Grade	Weight per ft. (lb/ft)	FOOTAGE: For Drilling (ft)	INTERVALS: Left in Well (ft)	CEMENT: Fill-up (Cu. Ft.)/CTS
Conductor	30"	New	LS	157.5	120'	120' ✓	Drilled In
Fresh Water/Coal	20"	NEW	J-55	94	1200'	1200' ✓	40% excess, CTS ✓
Intermediate 1	13 3/8"	NEW	J-55 BTC	68	2100'	2100' ✓	40% excess, CTS
Intermediate 2	9 5/8"	NEW	L-80 BTC	40	5675'	5675' ✓	40% excess tail, CTS
Production	5 1/2"	NEW	P-110 HP	23	30458'	30458' ✓	20% excess tail, CTS
Tubing							
Liners							

Kenneth Greynolds

Digitally signed by: Kenneth Greynolds  
 DN: CN = Kenneth Greynolds email = Kenneth.L.Greynolds@wv.gov, C = AD, O = WVDEP, OU = Oil and Gas  
 Date: 2023.09.20 09:14:38 -0400

TYPE	Size (in)	Wellbore Diameter (in)	Wall Thickness (in)	Burst Pressure (psi)	Anticipated Max. Internal Pressure (psi)	Cement Type	Cement Yield (cu. ft./k)
Conductor	30"	30"	.500				Drilled In
Fresh Water/Coal	20"	24"	.438	2110	1200	Type 1, Class A	40% excess yield = 1.20, CTS ✓
Intermediate 1	13 3/8"	17 1/2"	.480	3450		Type 1/Class A	Lead 40% excess, Tail 0% excess
Intermediate 2	9 5/8"	12 1/4"	.395	5750		Type 1/Class A	Lead 40% excess, Tail 0% Excess Lead ✓
Production	5 1/2"	8 1/2"	.415	16240	12500	Type 1/Class A	20% excess yield = 1.19, tail yield 1.84 ✓
Tubing							
Liners							

**PACKERS**

Kind:				
Sizes:				
Depths Set:				

RECEIVED  
 Office of Oil and Gas  
 SEP 25 2023  
 WV Department of  
 Environmental Protection



19) Describe proposed well work, including the drilling and plugging back of any pilot hole:

Drill the vertical depth to the Marcellus at an estimated total vertical depth of approximately 7230 feet. Drill horizontal leg to estimated 21,573' lateral length, 30,458' TMD. Hydraulically fracture stimulate and be capable of producing from the Marcellus Formation. Should we encounter an unanticipated void in the coal, we will install a minimum of 20' of casing below the void but not more than 100' below the void, set a basket and grout to surface. We plan to run an ACP above the Gantz/Dominion Storage interval to aid in sealing off and isolating the storage interval.

20) Describe fracturing/stimulating methods in detail, including anticipated max pressure and max rate:

The stimulation will be completed with multiple stages divided over the lateral length of the well. Stage spacing is dependent upon engineering design. Slickwater fracturing technique will be utilized on each stage using sand, water, and chemicals. See attached list. Maximum pressure not to exceed 12,500 psi.

21) Total Area to be disturbed, including roads, stockpile area, pits, etc., (acres): 29.485 acres

22) Area to be disturbed for well pad only, less access road (acres): 9.246 acres

23) Describe centralizer placement for each casing string:

No centralizers will be used with conductor casing.  
Freshwater - centralized every 3 joints to surface.  
Coal - Bow Spring on every joint, will also be running ACP for isolating storage zone  
Intermediate - Bow Spring on first 2 joints then every third joint to 100' from surface.  
Production - Run 1 spiral centralizer every 5 joints from the top of the curve to surface. Run 1 spiral centralizer every 3 joints from the 1st 5.5' long joint to the top of the curve.

24) Describe all cement additives associated with each cement type:

Conductor - N/A, Casing to be drilled in w/ Dual Rotary Rig.  
Fresh Water - 15.6 ppg PNE-1 + 3% bwoc CaCl<sub>2</sub> 40% Excess Yield = 1.20, CTS  
Intermediate 1 - "Lead: 15.4 ppg PNE-1 + 2.5% bwoc CaCl<sub>40%</sub> Excess / Tail: 15.9 ppg PNE-1 + 2.5% bwoc CaCl zero% Excess. CTS"  
Intermediate 2 - "Lead: 15.4 ppg PNE-1 + 2.5% bwoc CaCl<sub>40%</sub> Excess / Tail: 15.9 ppg PNE-1 + 2.5% bwoc CaCl zero% Excess. CTS"  
Production - "Lead: 14.5 ppg POZ:PNE-1 + 0.3% bwoc R3 + 1% bwoc EC1 + 0.75 gal/sk FP13L + 0.3% bwoc MPA170Tail: 14.8 ppg PNE-1 + 0.35% bwoc R3 + 0.75 gal/sk FP13L + 50% bwoc ASCA1 + 0.5% bwoc MPA17020% ExcessLead Yield=1.19Tail Yield=1.94CTS"

25) Proposed borehole conditioning procedures:

Conductor - Ensure the hole is clean at TD.  
Fresh Water - Once casing is at setting depth, circulate a minimum of one hole volume with Fresh Water prior to pumping cement.  
Coal - Once casing is at setting depth, Circulate and condition at TD. Circulate a minimum of one hole volume prior to pumping cement.  
Intermediate - Once casing is at setting depth, Circulate and condition mud at TD. Circulate a minimum of one hole volume prior to pumping cement.  
Production - Once on bottom/TD with casing, circulate at max allowable pump rate for at least 2x bottoms up, or until returns and pump pressures indicate the hole is clean. Circulate a minimum of one hole volume prior to pumping cement.

RECEIVED  
Office of Oil and Gas  
SEP 25 2023  
WV Department of  
Environmental Protection

\*Note: Attach additional sheets as needed.



\*\*\* Storage String \*\*\* CTS \*\*\*

15.4 ppg Lead - Yield 1.24 - D896 Surface Set 100 lb / sack (Mix of Class A and Gypsum to meet Dominion Requirements)  
 B348 - 0.5% BWOB Fluid Loss / D013 - 0.75% BWOB Retarder / D47 - 0.02 gal / sack VBWOB Anti Foam / D202 - 0.15% BWOB  
 Dispersant / D095 1.5 lb per BBL CemNET\* - 60% Excess  
 15.9 ppg Tail - Yield 1.17 - D896 Surface Set 100 lb / sack (Mix of Class A and Gypsum to meet Dominion Requirements)  
 B160A - 0.15% BWOB Dispersant / B547 - 0.35% BWOB GasBLOK\* / D013 - 0.3% BWOB Retarder / D047 - 0.02 gal / sack Anti Foam /  
 D801 - 0.03 gal / sack Retarder - 0% Excess

1205 S-10H  
 Marcellus Shale Horizontal  
 Harrison County, WV



			<b>1205 S-10H SHL</b>				<b>14218461.69N 1824098.78E</b>							
<b>Ground Elevation</b>			<b>1407'</b>				<b>1205 S-10H LP</b>				<b>14219268.84N 1827192.48E</b>			
<b>Azm</b>			<b>160.547°</b>				<b>1205 S-10H BHL</b>				<b>14198993.41N 1834526.31E</b>			

WELLBORE DIAGRAM	HOLE	CASING	GEOLOGY	TOP	BASE	MUD	CEMENT	CENTRALIZERS	CONDITIONING	COMMENTS
	30"	30" 157.5# LS	Conductor	0	120	AIR	N/A, Casing to be drilled in w/ Dual Rotary Rig	N/A	Ensure the hole is clean at TD.	Conductor casing = 0.5" wall thickness
	26"	20" 94# J-55	Fresh Water	0	135, 480, 640, 728	AIR	15.6 ppg PNE-1 + 3% bwoc CaCl 40% Excess Yield=1.20 / CTS	Centralized every 3 joints to surface	Once casing is at setting depth, circulate a minimum of one hole volume with Fresh Water prior to pumping cement.	Surface casing = 0.438" wall thickness Burst=2110 psi
			Coals		736					
			Fresh Water Protection	0	1200					
	17.5"	13-3/8" 68# J-55 BTC	Little Lime	1467	1482	AIR / KCL Salt Polymer	See above (LEFT) for Storage String Cement Blend to Meet DTI Requirements for Gas Storage Field Isolation	Bow Spring on every joint *will also be running ACP for isolating storage zone*	Once casing is at setting depth, Circulate and condition at TD. Circulate a minimum of one hole volume prior to pumping cement.	Intermediate casing = 0.480" wall thickness Burst=3450 psi
			Big Lime	1510	1556					
			Injun / Gantz (Storage)	1565 / 1900	1690 / 1970					
			Intermediate 1	0	2100					
			Fifty Foot / Thirty	1993 / 2112	2093 / 2147					
	12.25"	9-5/8" 40# N / L-80 BTC	Gordon Stray / Gordon	2195 / 2250	2250 / 2310	AIR / KCL Salt Polymer	Lead: 15.4 ppg PNE-1 + 2.5% bwoc CaCl 40% Excess / Tail: 15.9 ppg PNE-1 + 2.5% bwoc CaCl zero% Excess. CTS	Bow Spring on first 2 joints then every third joint to 100' form surface	Once casing is at setting depth, Circulate and condition mud at TD. Circulate a minimum of one hole volume prior to pumping cement.	Intermediate casing = 0.395" wall thickness Burst=5750 psi
			5th Sand	2440	2468					
			Warren	2835	2860					
			Speechley	3028	3162					
			Bradford	3342	3367					
			Benson	4420	4455					
			Alexander	4590	4680					
			Elk	5261	5294					
			Intermediate 2	0	TVD: 5325' MD: 5675' Inc: 44.5 deg.					
			8.5" Curve	5-1/2" 23# P-110 HP TXP / W461	Rhinestreet					
	Cashaqua	6420			6740					
Middlesex	6740	6870								
West River	6870	7003								
Burkett	7003	7048								
Tully Limestone	7048	7149								
Hamilton	7149	6753								
Marcellus	7214	7315								
8.5" Lateral		TMD / TVD (Production)	30458	7230	11.5ppg-12.5ppg SOBM					
		Onondaga	7315							

LP @ 7230' TVD / 8885' MD

8.5" Hole - Cemented Long String 5-1/2" 23# P-110 HP TXP / W461

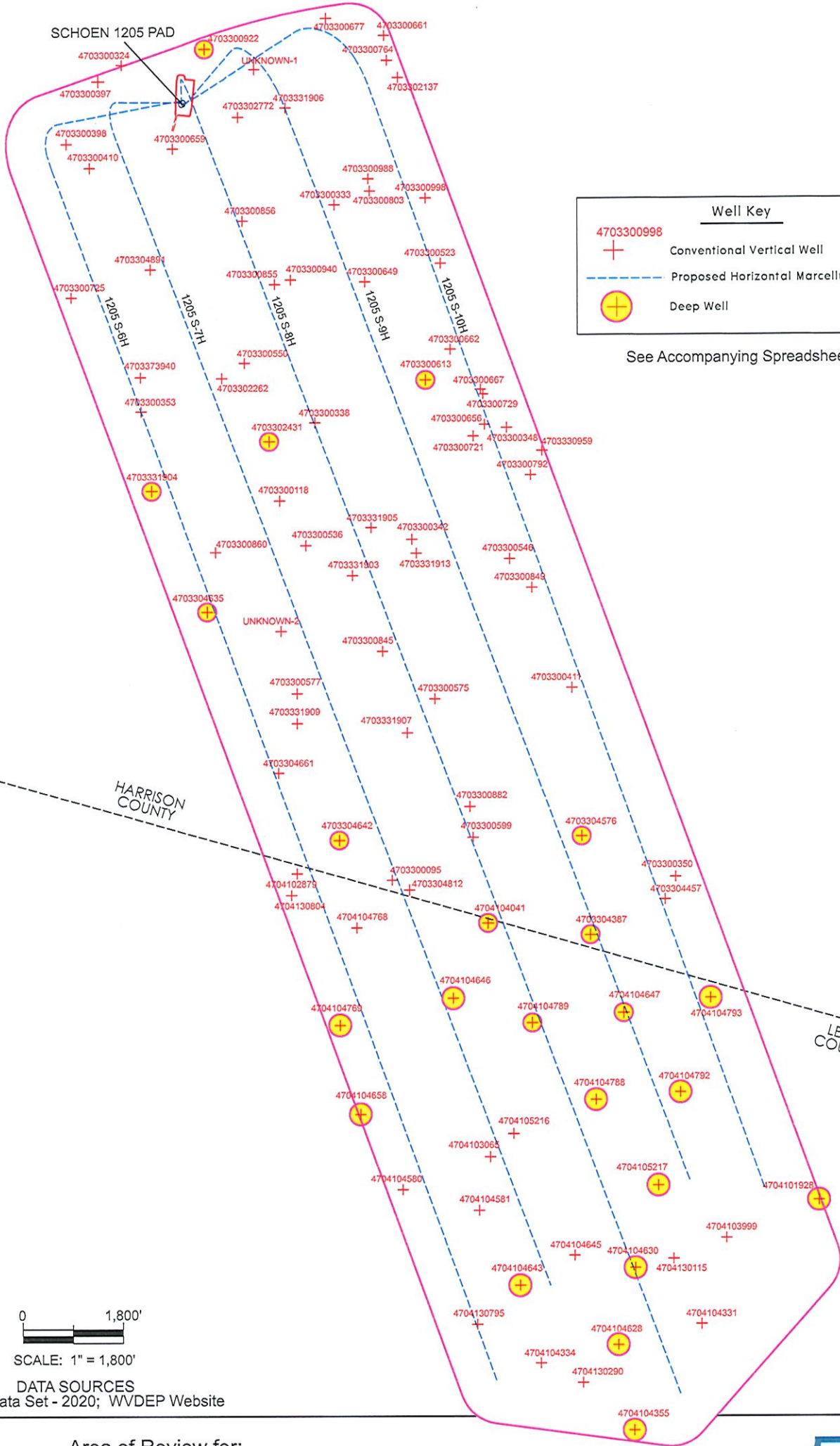
+/-21573' ft Lateral

TD @ +/-7230' TVD +/-30458' MD

X=Centralizers



SCHOEN 1205 PAD

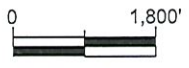


Well Key	
+	Conventional Vertical Well
- - - -	Proposed Horizontal Marcellus Well
⊕	Deep Well

See Accompanying Spreadsheets

HARRISON COUNTY

LEWIS COUNTY



SCALE: 1" = 1,800'

DATA SOURCES  
WVGES Data Set - 2020; WVDEP Website

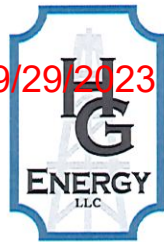
Area of Review for:

### SCHOEN 1205 SOUTH UNIT

Proposed 1205 S-6H Proposed 1205 S-7H Proposed 1205 S-8H  
Proposed 1205 S-9H Proposed 1205 S-10H

Grant District, Harrison County, W.Va. &  
Hacker's Creek District, Lewis County, W.Va.

HG ENERGY, II APPALACHIA, LLC  
5260 DuPont Road, Parkersburg, WV 26101



09/29/2023

9/26/2023



**EXISTING WELLS LOCATED WITHIN THE AREA OF REVIEW FOR:  
SCHOEN 1205 SOUTH UNIT AND PROPOSED WELLS S-6H, S-7H, S-8H, S-9H & S-10H**

CT	API	COUNTY	FARM	OPERATOR NAME	FORMATION NAME	WELL TYPE	TVD	STATUS	LATITUDE	LONGITUDE	
	1	4703300095	Harrison	A B Jackson 1	Eastern Gas Transmission & Storage, Inc.	Fifth	Storage	2219	ACTIVE	39.113482	-80.340584
	2	4703300118	Harrison	O F Allman 1	Eastern Gas Transmission & Storage, Inc.	Gantz	Storage	1679	ACTIVE	39.131942	-80.346144
	3	4703300324	Harrison	John H Hardway 1	Eastern Gas Transmission & Storage, Inc.	Gantz	Storage	1644	ACTIVE	39.153472	-80.355885
	4	4703300333	Harrison	James M Waggoner	UNKNOWN	Hampshire Grp	Gas	2165	PLUGGED	39.146495	-80.342517
	5	4703300338	Harrison	F S Young	Eastern Gas Transmission & Storage, Inc.	Gantz	Storage	1700	ACTIVE	39.135769	-80.343869
	6	4703300342	Harrison	Asa Boyce	UNKNOWN	Fifth	Gas	2269	PLUGGED	39.129986	-80.337801
X	7	4703300348	Harrison	Sarah F Vincent	UNKNOWN	Hampshire Grp	Gas	2054	PLUGGED	39.135437	-80.331733
X	8	4703300350	Harrison	Viola Mount	Eastern Gas Transmission & Storage, Inc.	Greenland Gap Fm	Gas	4370	PLUGGED	39.113273	-80.321297
	9	4703300353	Harrison	G M Curry et al	Eastern Gas Transmission & Storage, Inc.	Gordon (undiff)	Storage	2047	ACTIVE	39.136407	-80.354852
	10	4703300397	Harrison	Marcella R Bond	Hope Natural Gas Company	Up Devonian	Gas	1587	PLUGGED	39.152681	-80.357369
	11	4703300398	Harrison	J N Rector	UNKNOWN	Thirty-foot	Storage	2002	PLUGGED	39.149633	-80.359418
	12	4703300410	Harrison	E A Waggoner	Eastern Gas Transmission & Storage, Inc.	Hampshire Grp	Storage	1964	ACTIVE	39.148438	-80.357974
X	13	4703300411	Harrison	W N Dawson CW513	Eastern Gas Transmission & Storage, Inc.	Hampshire Grp	Storage	1920	ACTIVE	39.122627	-80.327748
X	14	4703300523	Harrison	Lewis C Swisher	Eastern Gas Transmission & Storage, Inc.	Gantz	Storage	1723	ACTIVE	39.143557	-80.335826
	15	4703300536	Harrison	M M F Randolph	Eastern Gas Transmission & Storage, Inc.	Benson	Gas	4410	ACTIVE	39.129739	-80.344514
X	16	4703300546	Harrison	M M F Randolph	Eastern Gas Transmission & Storage, Inc.	Benson	Gas	4260	ACTIVE	39.128982	-80.331615
	17	4703300550	Harrison	Lloyd D Swisher	Eastern Gas Transmission & Storage, Inc.	Benson	Dry w/ Gas Show	4320	PLUGGED	39.138747	-80.348299
	18	4703300575	Harrison	Sidney Haymond	Eastern Gas Transmission & Storage, Inc.	Benson	Gas	4350	ACTIVE	39.122265	-80.336369
	19	4703300577	Harrison	Sidney Cookman	Eastern Gas Transmission & Storage, Inc.	Benson	Gas	4356	ACTIVE	39.122467	-80.345146
	20	4703300599	Harrison	Amanda E Smith	Eastern Gas Transmission & Storage, Inc.	Bayard	Gas	2512	ACTIVE	39.115515	-80.334818
	21	4703300613	Harrison	Lewis C Swisher	Eastern Gas Transmission & Storage, Inc.	Benson	Gas	4457	ACTIVE	39.137811	-80.336839
	22	4703300649	Harrison	G W Swisher	Eastern Gas Transmission & Storage, Inc.	Greenland Gap Fm	Storage	2347	ACTIVE	39.142725	-80.340651
X	23	4703300656	Harrison	F S Young CW520	Eastern Gas Transmission & Storage, Inc.	Greenland Gap Fm	Storage	1894	PLUGGED	39.135593	-80.333125
	24	4703300659	Harrison	S V Curry CW433	Eastern Gas Transmission & Storage, Inc.	Thirty-foot	Storage	1990	ACTIVE	39.149343	-80.352710
	25	4703300661	Harrison	M S Davis	Eastern Gas Transmission & Storage, Inc.	Fifty-foot	Storage	1885	ACTIVE	39.154774	-80.339265
X	26	4703300662	Harrison	L C Swisher CW527	Eastern Gas Transmission & Storage, Inc.	Fifty-foot	Storage	1759	ACTIVE	39.139321	-80.335262
X	27	4703300667	Harrison	G W Swisher CW525	Eastern Gas Transmission & Storage, Inc.	Hampshire Grp	Storage	1687	PLUGGED	39.137325	-80.333373
X	28	4703300677	Harrison	D L Nutter	Alliance Petroleum Co. LLC	Thirty-foot	Gas	1850	ABANDONED	39.155655	-80.342933
X	29	4703300721	Harrison	Harris Hrs CW521	Eastern Gas Transmission & Storage, Inc.	Fifty-foot	Storage	1948	PLUGGED	39.135023	-80.333850
	30	4703300725	Harrison	W E Ware	Eastern Gas Transmission & Storage, Inc.	Fifty-foot	Storage	1985	ACTIVE	39.142666	-80.360350
X	31	4703300729	Harrison	F Wiant CW522	Eastern Gas Transmission & Storage, Inc.	Fifty-foot	Storage	1864	PLUGGED	39.137099	-80.333220
X	32	4703300764	Harrison	M S Davis CW533	Eastern Gas Transmission & Storage, Inc.	Thirty-foot	Storage	2028	PLUGGED	39.153552	-80.339108
X	33	4703300792	Harrison	L Snyder CW518	Eastern Gas Transmission & Storage, Inc.	Fifty-foot	Storage	1824	PLUGGED	39.133088	-80.330236
	34	4703300803	Harrison	O Fallman CW430	Eastern Gas Transmission & Storage, Inc.	Thirty-foot	Storage	2125	PLUGGED	39.147150	-80.340268



X	35	4703300845	Harrison	S Haymond CW514	Eastern Gas Transmission & Storage, Inc.	Thirty-foot	Storage	2175	ACTIVE	39.124501	-80.339721
	36	4703300849	Harrison	M M F Randolph CW573	Eastern Gas Transmission & Storage, Inc.	Thirty-foot	Storage	2000	ACTIVE	39.127556	-80.330228
	37	4703300855	Harrison	Susan V Curry	Eastern Gas Transmission & Storage, Inc.	Thirty-foot	Storage	1877	ACTIVE	39.142614	-80.346345
	38	4703300856	Harrison	Susan V Curry CW472	Eastern Gas Transmission & Storage, Inc.	Thirty-foot	Storage	1950	ACTIVE	39.145753	-80.348358
	39	4703300860	Harrison	Burgett Swisher CW470	Eastern Gas Transmission & Storage, Inc.	Fifty-foot	Storage	1925	ACTIVE	39.129447	-80.350236
	40	4703300882	Harrison	Patricia B Smith	Eastern Gas Transmission & Storage, Inc.	Fifty-foot	Storage	1965	ACTIVE	39.116823	-80.334272
	41	4703300922	Harrison	A B Yost	Eastern Gas Transmission & Storage, Inc.	Benson	Gas	4455	ACTIVE	39.154204	-80.350633
	42	4703300940	Harrison	Susan Curry	Eastern Gas Transmission & Storage, Inc.	Benson	Gas	4256	ACTIVE	39.142820	-80.345334
X	43	4703300988	Harrison	Levi B Davis CW431	Eastern Gas Transmission & Storage, Inc.	Fifth	Storage	2137	ACTIVE	39.147749	-80.340351
X	44	4703300998	Harrison	S G Kennedy CW531	Eastern Gas Transmission & Storage, Inc.	Thirty-foot	Storage	1910	ACTIVE	39.146770	-80.336744
	45	4703302137	Harrison	M S Davis	Eastern Gas Transmission & Storage, Inc.	Benson	Gas	4478	ACTIVE	39.152701	-80.338421
	46	4703302262	Harrison	Lloyd D. Swisher	Eastern Gas Transmission & Storage, Inc.	UNKNOWN	Storage	-	ACTIVE	39.137999	-80.349742
	47	4703302431	Harrison	J & F Allman	Eastern Gas Transmission & Storage, Inc.	Benson	Gas	4664	ACTIVE	39.134863	-80.346773
	48	4703302772	Harrison	J H & C Gerlach	Greylock Conventional, LLC	Benson	Gas	4427	ACTIVE	39.150855	-80.348565
	49	4703304387	Harrison	Thomas C Kennedy	Eastern Gas Transmission & Storage, Inc.	Greenland Gap Fm	Gas	4577	ACTIVE	39.110737	-80.327029
X	50	4703304457	Harrison	Wayne R Lewis	Eastern Gas Transmission & Storage, Inc.	Greenland Gap Fm	Gas	4420	ACTIVE	39.112332	-80.32219
	51	4703304576	Harrison	Patricia B/Virginia L Smith	Eastern Gas Transmission & Storage, Inc.	Benson	Gas	4632	ACTIVE	39.115522	-80.327403
	52	4703304635	Harrison	Charles R/F Sutton	Eastern Gas Transmission & Storage, Inc.	Greenland Gap Fm	Gas	4660	ACTIVE	39.1265141	-80.3507881
	53	4703304642	Harrison	Myrtle B Arobogast	Eastern Gas Transmission & Storage, Inc.	Greenland Gap Fm	Gas	4453	ACTIVE	39.115232	-80.342637
	54	4703304661	Harrison	Gloria M Coward	Eastern Gas Transmission & Storage, Inc.	Benson	Gas	4350	ACTIVE	39.118568	-80.346361
	55	4703304812	Harrison	Catherine Mauro	Eastern Gas Transmission & Storage, Inc.	Greenland Gap Fm	Gas	4302	ACTIVE	39.112912	-80.338169
	56	4703304891	Harrison	Joseph C Queen	Eastern Gas Transmission & Storage, Inc.	not available	not available	-	PLUGGED	39.143411	-80.354188
	57	4703330959	Harrison	Aubrey Randolph	Hope Natural Gas Company	Hampshire Grp	Gas	2067	PLUGGED	39.134275	-80.329503
	58	4703331903	Harrison	M M F Randolph	Eastern Gas Transmission & Storage, Inc.	Greenland Gap Fm	Storage	2164	ACTIVE	39.128236	-80.341573
	59	4703331904	Harrison	B Swisher CW420	Eastern Gas Transmission & Storage, Inc.	Greenland Gap Fm	Gas	4625	PLUGGED	39.132479	-80.354236
	60	4703331905	Harrison	M F Randolph CW422	Eastern Gas Transmission & Storage, Inc.	UNKNOWN	Storage	2182	UNKNOWN	39.130586	-80.340370
	61	4703331906	Harrison	F S Young	Eastern Gas Transmission & Storage, Inc.	Gantz	Storage	1910	ACTIVE	39.151283	-80.345552
	62	4703331907	Harrison	S Haymond	Consolidated Gas Supply Corp.	Greenland Gap Fm	Storage	2200	PLUGGED	39.120487	-80.338192
	63	4703331909	Harrison	S Cookman	Consolidated Gas Supply Corp.	not available	not available	-	PLUGGED	39.121175	-80.345234
	64	4703331913	Harrison	M M F Randolph	Eastern Gas Transmission & Storage, Inc.	UNKNOWN	not available	2345	PLUGGED	39.129301	-80.337525
	65	4703373940	Harrison	Lloyd D Swisher 1656	UNKNOWN	UNKNOWN	not available	2036	UNKNOWN	39.138091	-80.354883
	66	4704101928	Lewis	Stella Cummings	Eastern Gas Transmission & Storage, Inc.	Benson	Gas	4463	PLUGGED	39.097336	-80.312407
	67	4704102879	Lewis	A S Holbert	Eastern Gas Transmission & Storage, Inc.	UNKNOWN	Storage	2326	ACTIVE	39.113587	-80.345250
	68	4704103065	Lewis	George Cummings	UNKNOWN	UNKNOWN	not available	-	ABANDONED	39.099587	-80.333173
	69	4704103999	Lewis	Eleanor Tenney et al	Petroleum Development Corp.	UNKNOWN	not available	-	PLUGGED	39.09551	-80.318274
	70	4704104041	Lewis	Thomas C Kennedy	Eastern Gas Transmission & Storage, Inc.	Greenland Gap Fm	Gas	4465	ACTIVE	39.111027	-80.33333
	71	4704104331	Lewis	Harold Linger	Eastern Gas Transmission & Storage, Inc.	Greenland Gap Fm	Gas	2667	ACTIVE	39.091290	-80.319884



72	4704104334	Lewis	Samuel Morrison et al	Eastern Gas Transmission & Storage, Inc.	Greenland Gap Fm	Gas	2541	ACTIVE	39.089420	-80.330060
73	4704104355	Lewis	Gary Taylor	Diversified Production LLC	Greenland Gap Fm	Gas	5160	ACTIVE	39.086092	-80.324192
74	4704104580	Lewis	Timothy D Waugh	Eastern Gas Transmission & Storage, Inc.	Greenland Gap Fm	Gas	4431	ACTIVE	39.098009	-80.338724
75	4704104581	Lewis	Gordon W Moore	Eastern Gas Transmission & Storage, Inc.	Greenland Gap Fm	Gas	4366	ACTIVE	39.09696	-80.333888
76	4704104628	Lewis	George W Dawson	Eastern Gas Transmission & Storage, Inc.	Misc Sands-BNSN/BRLR	Gas	4459	ACTIVE	39.090289	-80.325157
77	4704104630	Lewis	Harold Linger	Eastern Gas Transmission & Storage, Inc.	Misc Sands-BNSN/BRLR	Gas	4673	ACTIVE	39.09406	-80.324042
78	4704104643	Lewis	Gordon W Moore	Eastern Gas Transmission & Storage, Inc.	Misc Sands-BNSN/BRLR	Gas	4641	ACTIVE	39.093236	-80.331338
79	4704104645	Lewis	Gordon W Moore	Eastern Gas Transmission & Storage, Inc.	Greenland Gap Fm	Gas	2742	ACTIVE	39.094694	-80.327878
80	4704104646	Lewis	Thomas C Kennedy	Eastern Gas Transmission & Storage, Inc.	Misc Sands-BNSN/BRLR	Gas	4643	ACTIVE	39.107390	-80.335430
81	4704104647	Lewis	Thomas C Kennedy	Eastern Gas Transmission & Storage, Inc.	Greenland Gap Fm	Gas	4649	ACTIVE	39.106966	-80.324793
82	4704104658	Lewis	Howard A Mearns	Eastern Gas Transmission & Storage, Inc.	Greenland Gap Fm	Gas	4470	ACTIVE	39.101738	-80.341353
83	4704104768	Lewis	Thomas C Kennedy	Eastern Gas Transmission & Storage, Inc.	Misc Sands-BNSN/BRLR	Gas	4320	ACTIVE	39.110890	-80.341502
84	4704104769	Lewis	Myrtle B Arbogast	Eastern Gas Transmission & Storage, Inc.	Misc Sands-BNSN/BRLR	Gas	4456	ACTIVE	39.106117	-80.342608
85	4704104788	Lewis	Thomas C Kennedy et al	Eastern Gas Transmission & Storage, Inc.	Greenland Gap Fm	Gas	4635	ACTIVE	39.102365	-80.326446
86	4704104789	Lewis	Thomas C Kennedy etal	Eastern Gas Transmission & Storage, Inc.	Misc Sands-BNSN/BRLR	Gas	4452	ACTIVE	39.106241	-80.330563
87	4704104792	Lewis	Dorothy J Randolph	Eastern Gas Transmission & Storage, Inc.	Greenland Gap Fm	Gas	4749	ACTIVE	39.102702	-80.321113
X 88	4704104793	Lewis	Frank E Lewis/N Jackson	Eastern Gas Transmission & Storage, Inc.	Greenland Gap Fm	Gas	4707	ACTIVE	39.107306	-80.319155
89	4704105216	Lewis	George Wesley Dawson	Eastern Gas Transmission & Storage, Inc.	Greenland Gap Fm	Gas	4428	ACTIVE	39.100731	-80.331676
90	4704105217	Lewis	George Wesley Dawson	Eastern Gas Transmission & Storage, Inc.	Greenland Gap Fm	Gas	4686	ACTIVE	39.09812	-80.322556
91	4704130115	Lewis	M E Cookman	Hope Natural Gas Company	Hampshire Grp	Gas	2614	PLUGGED	39.094495	-80.321623
92	4704130290	Lewis	Claudia Blake	Standard Gas Co.	Hampshire Grp	Gas	2450	PLUGGED	39.08845	-80.327404
93	4704130795	Lewis	Geo M Post	Consolidated Gas Supply Corp.	Hampshire Grp	Gas	2446	PLUGGED	39.09135	-80.334074
94	4704130804	Lewis	H J Melton	Consolidated Gas Supply Corp.	Hampshire Grp	not available	2326	PLUGGED	39.112522	-80.345615
95	UNKNOWN 1	Harrison	J.J. Lewis ??	UNKNOWN	UNKNOWN	not available	-	PLUGGED	39.153186	-80.347510
96	UNKNOWN 2	Harrison	Sydney Cookman ??	UNKNOWN	UNKNOWN	not available	-	ABANDONED	39.125542	-80.346132
							YELLOW DENOTES WELL WITH TVD > 4,450'		GREEN DENOTES SURVEYED WELLS	

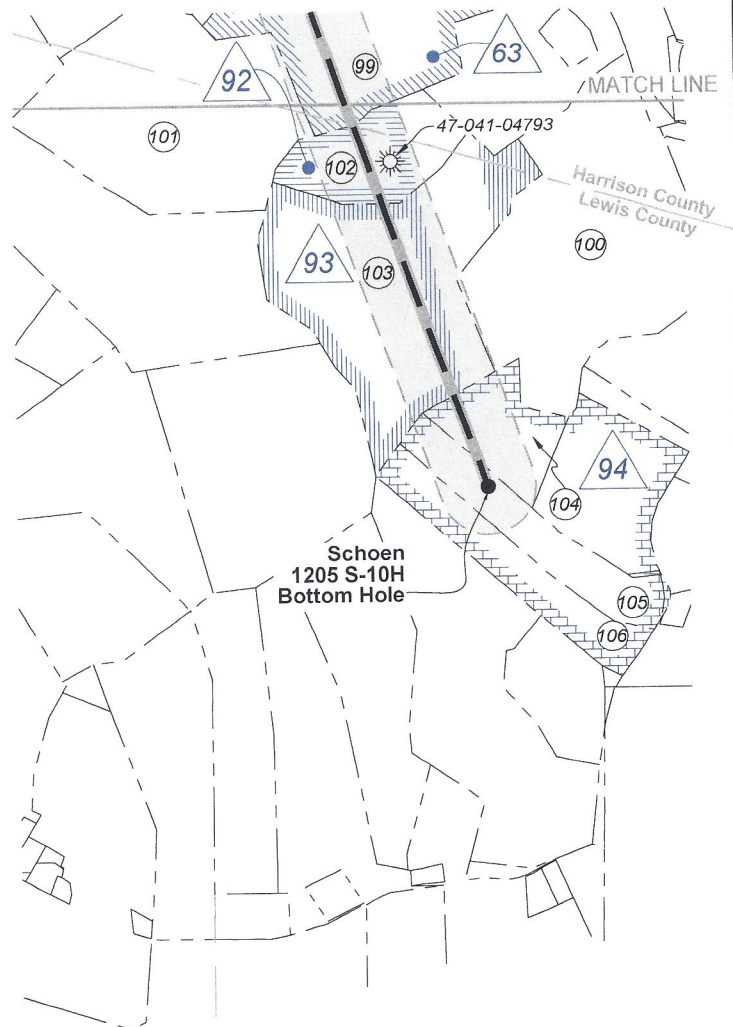
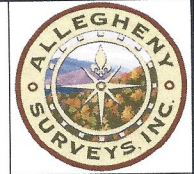
SOURCE: WVGES DATASET (2020) and WVDEP WEBSITE AND FIELD SURVEYS

UPDATED 9/26/2023

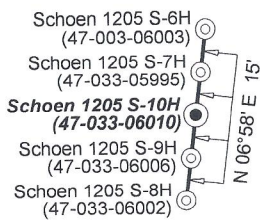




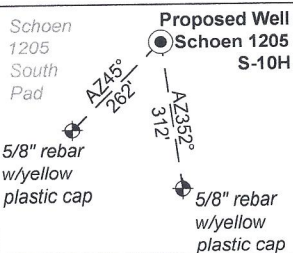




Wellhead Layout (NTS)



Well Location References  
Not to Scale



ID	Lease
1	A.B. Post, et al
4	John H. & Charlotte C. Gerlach
8	L.B. & S.J. Davis
10	Lewis C. & Alma Swisher
12	French S. & Anna J. Young
13	Lewis C. & Alma Swisher
14	M.M.F. & S.F. Randolph
17	Mary Holbert Ellyson, et vir, et al
22	W. Haymond & Rachel E. Dawson
26	Milton S. Davis, et al
29	Alan M. & Deborah K. Randolph
36	HG Energy II Appalachia, LLC
44	HG Energy II Appalachia, LLC
50	W. Haymond Dawson, et ux
62	Kate Stout
63	C. Ross Lewis, et ux, et al
80	D.L. Nutter, et ux
92	Ocie Lewis
93	Eugenia F. Mills, et vir
94	Stella Cummings, et al

FILE NO: 32-36-G-19

DRAWING NO: Schoen 1205 S-10H Well Plat

SCALE: 1" = 2000'

MINIMUM DEGREE OF ACCURACY:  
Submeter

PROVEN SOURCE OF ELEVATION:  
CORS, Bridgeport, WV

STATE OF WEST VIRGINIA  
DEPARTMENT OF ENVIRONMENTAL PROTECTION  
OIL AND GAS DIVISION

DATE: September 14 2023

OPERATOR'S WELL NO. Schoen 1205 S-10H

API WELL NO

47 - 033 - 06010  
STATE COUNTY PERMIT

WELL TYPE:  OIL  GAS  LIQUID INJECTION  WASTE DISPOSAL  
(IF GAS) PRODUCTION:  STORAGE  DEEP  SHALLOW

LOCATION: ELEVATION: 1,407.3' WATERSHED: Middle West Fork Creek

DISTRICT: Grant / Hackers Creek

SURFACE OWNER: George & Rosanne Schoen

ROYALTY OWNER: Willa Post Robey, et al

LEASE NO: \_\_\_\_\_ ACREAGE: 78.20

PROPOSED WORK:  DRILL  CONVERT  DRILL DEEPER  FRACTURE OR STIMULATE  PLUG OFF OLD FORMATION  
 PERFORATE NEW FORMATION  OTHER PHYSICAL CHANGE IN WELL (SPECIFY) BH-MOD 7,230' TVD

PLUG AND ABANDON  CLEAN OUT AND REPLUG TARGET FORMATION: Marcellus Shale ESTIMATED DEPTH: 30,458' MD

Top: Mount Clare  
Btm: Berlin  
QUADRANGLE: \_\_\_\_\_  
COUNTY: Harrison / Lewis  
ACREAGE: 65.00  
09/29/2023

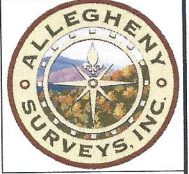
WELL OPERATOR: HG Energy II Appalachia, LLC

ADDRESS: 5260 Dupont Road  
Parkersburg, WV 26101

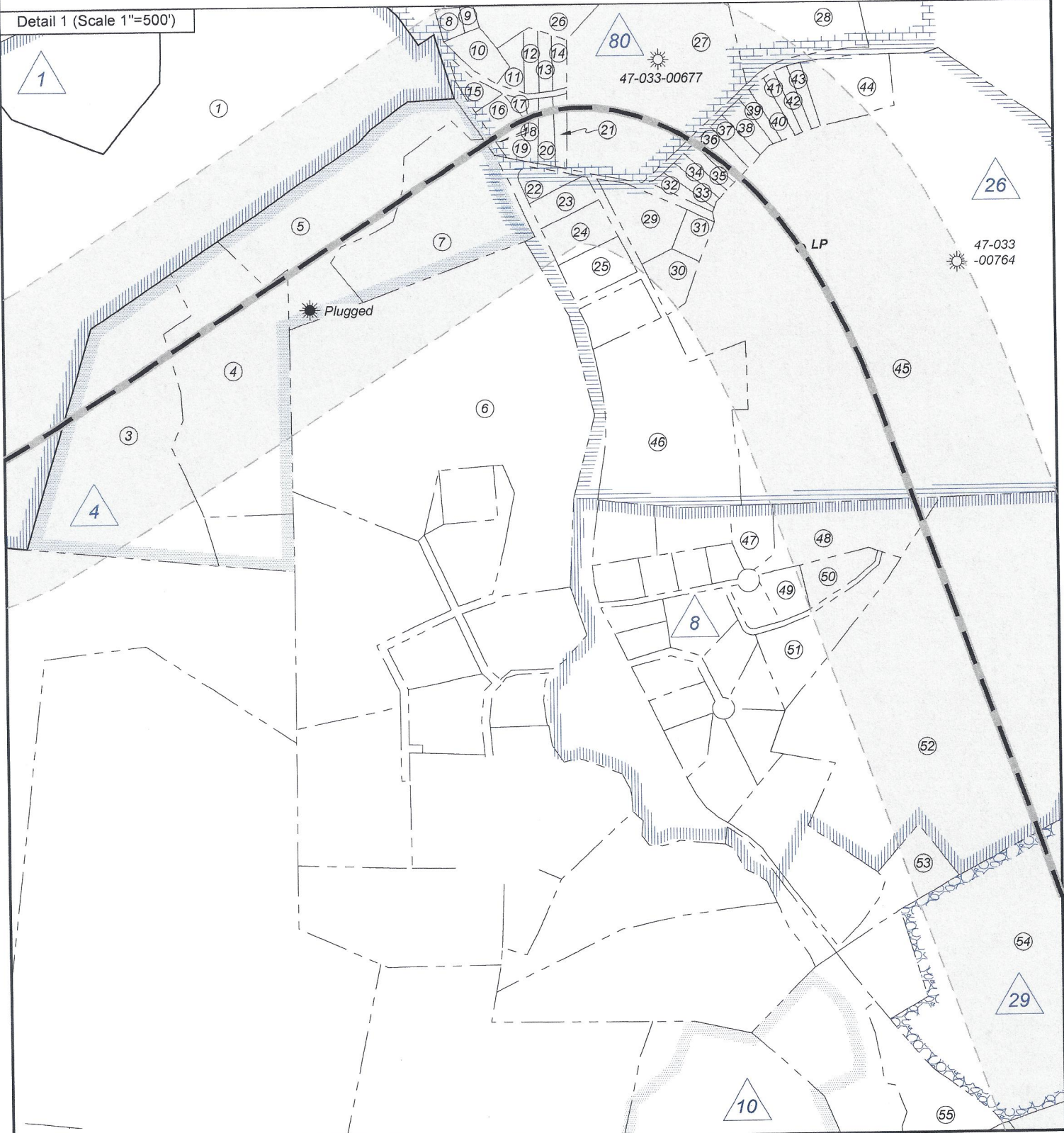
DESIGNATED AGENT: Diane C. White

ADDRESS: 5260 Dupont Road  
Parkersburg, WV 26101





Detail 1 (Scale 1"=500')



FILE NO: 32-36-G-19  
DRAWING NO: Schoen 1205 S-10H Well Plat  
SCALE: 1" = 2000'  
MINIMUM DEGREE OF ACCURACY:  
Submeter  
PROVEN SOURCE OF ELEVATION:  
CORS, Bridgeport, WV

**STATE OF WEST VIRGINIA**  
DEPARTMENT OF ENVIRONMENTAL PROTECTION  
**OIL AND GAS DIVISION**

DATE: September 14 2023  
OPERATOR'S WELL NO. Schoen 1205 S-10H

API WELL NO  
47 — 033 — 06010  
STATE COUNTY PERMIT

WELL TYPE:  OIL  GAS  LIQUID INJECTION  WASTE DISPOSAL  
(IF GAS) PRODUCTION:  STORAGE  DEEP  SHALLOW

LOCATION: ELEVATION: 1,407.3' WATERSHED: Middle West Fork Creek  
DISTRICT: Grant / Hackers Creek

Top: Mount Clare  
Bottom: Berlin  
QUADRANGLE:  
COUNTY: Harrison / Lewis  
ACREAGE: 65.00

SURFACE OWNER: George & Rosanne Schoen  
ROYALTY OWNER: Willa Post Robey, et al LEASE NO: ACREAGE: 78.20

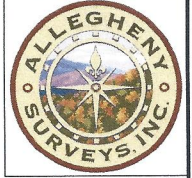
PROPOSED WORK:  DRILL  CONVERT  DRILL DEEPER  FRACTURE OR STIMULATE  PLUG OFF OLD FORMATION  
 PERFORATE NEW FORMATION  OTHER PHYSICAL CHANGE IN WELL (SPECIFY) BH-MOD 7,230' TVD  
 PLUG AND ABANDON  CLEAN OUT AND REPLUG TARGET FORMATION: Marcellus Shale ESTIMATED DEPTH: 30,458' MD

WELL OPERATOR: HG Energy II Appalachia, LLC  
ADDRESS: 5260 Dupont Road  
Parkersburg, WV 26101

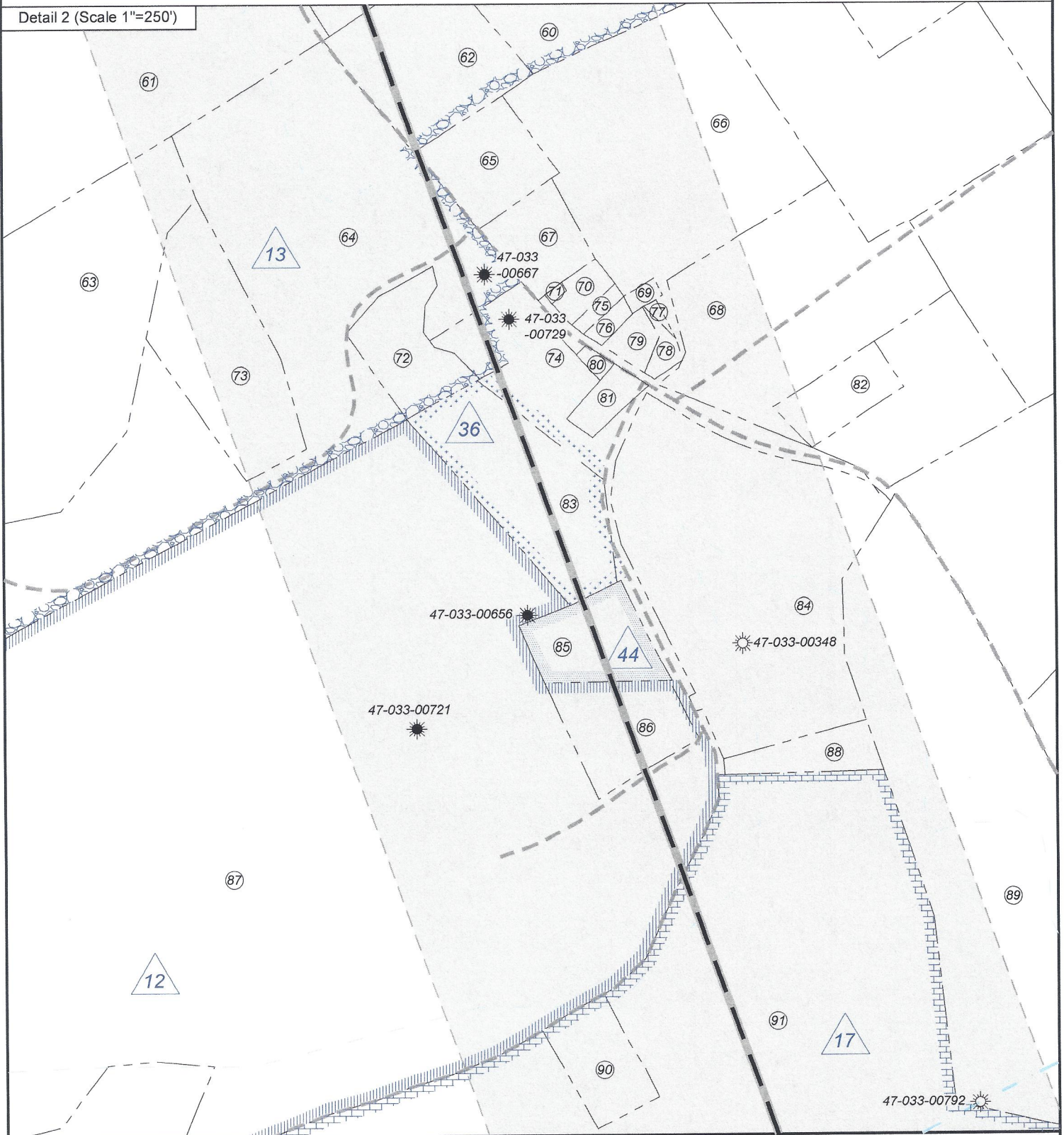
DESIGNATED AGENT: Diane C. White  
ADDRESS: 5260 Dupont Road  
Parkersburg, WV 26101

09/29/2023





Detail 2 (Scale 1"=250')



FILE NO: 32-36-G-19  
DRAWING NO: Schoen 1205 S-10H Well Plat  
SCALE: 1" = 2000'  
MINIMUM DEGREE OF ACCURACY:  
Submeter  
PROVEN SOURCE OF ELEVATION:  
CORS, Bridgeport, WV

**STATE OF WEST VIRGINIA**  
DEPARTMENT OF ENVIRONMENTAL PROTECTION  
**OIL AND GAS DIVISION**

DATE: September 14 2023  
OPERATOR'S WELL NO. Schoen 1205 S-10H  
API WELL NO  
47 — 033 — 06010  
STATE COUNTY PERMIT

WELL TYPE:  OIL  GAS  LIQUID INJECTION  WASTE DISPOSAL  
(IF GAS) PRODUCTION:  STORAGE  DEEP  SHALLOW

LOCATION: ELEVATION: 1,407.3' WATERSHED: Middle West Fork Creek

DISTRICT: Grant / Hackers Creek

SURFACE OWNER: George & Rosanne Schoen

ROYALTY OWNER: Willa Post Robey, et al

PROPOSED WORK:  DRILL  CONVERT  DRILL DEEPER  FRACTURE OR STIMULATE  PLUG OFF OLD FORMATION  
 PERFORATE NEW FORMATION  OTHER PHYSICAL CHANGE IN WELL (SPECIFY) BH-MOD

PLUG AND ABANDON  CLEAN OUT AND REPLUG TARGET FORMATION: Marcellus Shale ESTIMATED DEPTH: 30,458' MD

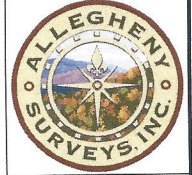
Top: Mount Clare  
Btm: Berlin  
QUADRANGLE: Harrison / Lewis  
COUNTY: Harrison / Lewis  
ACREAGE: 65.00

09/29/2023

WELL OPERATOR: HG Energy II Appalachia, LLC  
ADDRESS: 5260 Dupont Road  
Parkersburg, WV 26101

DESIGNATED AGENT: Diane C. White  
ADDRESS: 5260 Dupont Road  
Parkersburg, WV 26101





Harrison County				
No.	TM / Par	Owner	Bk / Pg	Ac.
1	447 / 2	George & Rosanne Schoen	1148 / 1059	65.00
2	446 / 29	Thomas K. Young, et al	1121 / 25	75.00
3	447 / 3	George and Rosanne Schoen	1253 / 302	10.06
4	447 / 3.4	Stephen M & Kimberly Goff	1257/189	7.67
5	447 / 3.3	Charlotte C Gerlach	1070/1041	6.10
6	447 / 4.11	Joseph & Karen Bowers	1295/887	21.87
7	447 / 3.2	Michael Tillman & Mary Hencke	1257/193	5.86
8	2105 / 46	Eugene Smith, et al	F111/530	0.26
9	2105 / 46.1	Emilee Hall, et al	1437/1189	0.17
10	2105 / 47	Cecil Smith, et al	1394/681	0.56
11	2105 / 48	Walter Knight	1284/893	0.37
12	2105 / 50	Helen I. Eakle Estate	---/---	0.25
13	2105 / 53	Virgil Lamb	1577/1012	0.23
14	2105 / 54	Ronald Lake	1415/288	0.23
15	2105 / 116	Kitty Lowther	1580/152	0.42
16	2105 / 117	Kitty Lowther	1580/152	0.50
17	2105 / 49	Kitty Lowther	1580/152	Lot 8
18	2105 / 117.1	Kitty Lowther	1580/152	0.02
19	2105 / 51	Helen I. Eakle Estate	---/---	Lot 7
20	2105 / 52	Virgil Lamb	1577/1012	0.33
21	2105 / 55	Ronald Lake	1415/288	0.23
22	2105 / 118	Trustees Church of God	1097/818	Lot 22
23	2105 / 119	Trustees Church of God	1097/818	Lot 24
24	2105 / 120	Trustees Church of God	1097/818	Lot 24
25	2105 / 121	Jane L. Given	882/569	0.881
26	427 / 33	Isacc & Betty Maxwell III	1539/141	67.32
27	427 / 34	Worthy C. Hall	1577/626	27.00
28	427 / 8.1	Allen Scott Hall	1265/589	5.40
29	2105 / 56	Thomas & Terri Hawkins	1558/1255	0.76
30	2105 / 57	Thomas & Terri Hawkins	1558/1255	0.70
31	2105 / 58	Thomas & Terri Hawkins	1558/1255	0.76
32	2105 / 59	Mary Ann Bowyer, et al	F118/63	0.23
33	2105 / 60	Mary Ann Bowyer, et al	F118/63	0.23
34	2105 / 61	Lisa Hickman	1621/760	0.21
35	2105 / 62	Lisa Hickman	1621/760	0.21
36	2105 / 63	Lisa Hickman	1621/760	0.38
37	2105 / 64	David W. & Blanche K. Stutler	1480/433	0.28
38	2105 / 65	Jean Riffle Estate, et al	F100 / 64	0.42
39	2105 / 67	Jean Riffle Estate, et al	F100 / 64	0.21
40	2105 / 68	Jean Riffle Estate, et al	F100 / 64	0.25
41	2105 / 69	Jean Riffle Estate, et al	F100 / 64	0.26
42	2105 / 70	Kevin R. Kolenda	1257/800	0.26
43	2105 / 71	Kevin R. Kolenda	1257/800	0.26
44	2105 / 73	Paul W. Winters	W 148/702	1.53
45	447 / 6	Thomas E. & Terri E. Hawkins	1558/1255	84.25
46	447 / 6.1	Michael & Charlotte Moses	1364/7	7.20
47	447 / 5	Michele L. Bennett	1336/796	0.75
48	447 / 5.11	Daniel & Paulette Shaffer	1448/933	2.66
49	447 / 5.23	Ronald & Janet Barnosky	0.57	0.57
50	447 / 5.24	Ronald & Janet Barnosky	1401/271	0.73
51	447 / 5.8	Ronald & Janet Barnosky	1401/271	2.03
52	447 / 27	Lyle Randolph, et al	1308/74	63.11
53	447 / 26	Russell A. Snyder	1425/1332	0.66
54	447 / 28	Lyle Randolph, et al	1308/74	46.50
55	447 / 23.1	Shirley Wheeler	1585/111	2.33
56	447 / 36	Debra J. Bedell	1291/931	82.38
57	447 / 36.1	Debra J. Bedell	1244/881	65.58
58	447 / 37.2	Carol S. Bennett	991/227	43.60
59	447 / 36.2	Jason & Taylor Workman	1593/15	4.55
60	447 / 36.1	Debra J. Bedell	1244/881	65.58
61	447 / 44.1	Debra J. Bedell	1291/931	30.37
62	447 / 51	Joseph F. Coffman	1360/716	1.54
63	447 / 44.4	Michael W. & Tracy L. Ash	1359/139	4.79
64	447 / 44	Roddy & Tracy L. Ash	1332/493	15.21
65	447 / 50	Judy M. Gillespie	1139/421	0.75
66	447 / 52	Trustees M P Church	501/142	4.20
67	447 / 49	Russell W. Stutler	FO 96/707	0.75
68	467 / 12	Stephen B. Riel	1229/916	3.06
69	447 / 54	Linda F. Marple	1325/1055	0.04
70	447 / 47	Leroy Stutler	1448/292	0.25

Harrison County				
No.	TM / Par	Owner	Bk / Pg	Ac.
71	447 / 48	Leroy Stutler	1448 / 292	0.01
72	447 / 44.2	Timothy Smith	1478 / 1262	0.95
73	447 / 44.5	Karri Trent	1404 / 418	1.78
74	467 / 8	Danny Joe & Greta Ann Butcher	1321 / 699	0.63
75	447 / 46	Leroy Stutler	1448 / 292	0.25
76	447 / 46.1	Leroy Stutler	1448 / 292	0.25
77	467 / 58	Trustees MP Parsonage	501 / 142	0.06
78	467 / 57	Trustees MP Parsonage	501 / 142	0.20
79	467 / 56	Linda F. Marple	1325 / 1055	0.25
80	467 / 9	Danny & Greta Bucher	1321 / 699	0.05
81	467 / 10	Carol S. Bennett	1450 / 590	0.22
82	467 / 13.1	Gordon C. Dawson	1330 / 356	0.57
83	467 / 6	Jackson L. Smith, et ux	1514 / 233	1.71
84	467 / 17	Steven C. & Dorothy J. Williams	1198 / 632	4.58
85	467 / 3	Jackson L. Smith	1412 / 25	0.75
86	467 / 2.1	Susan K. Dustin	1318 / 359	0.80
87	467 / 2	Jackson L. Smith	1378 / 976	95.16
88	467 / 19	Steven G. & Juila A. Randolph	1321 / 1151	---
89	467 / 21	Steven G. & Juila A. Randolph	1321 / 1151	10.30
90	467 / 20.1	Charles & Mitzie Reider	1358 / 1074	0.57
91	467 / 20	Steven G. & Juila A. Randolph	1321 / 1151	54.64
92	467 / 36	Gary W. & Kathy Hanby	1107 / 1041	15.35
93	467 / 26	Jane L. Given	1398 / 247	149.75
94	467 / 36.1	Gary W. & Kathy Hanby	1153 / 965	45.00
95	467 / 40	Edward G. Dawson	W137 / 528	39.75
96	467 / 52	David L. & Lisle C. Hinkle	1282 / 389	175.50
97	467 / 53	George W & Dorothy K. Dawson	1418 / 331	158.55
98	487 / 6	Clayton W. Rice	1563 / 252	70.33
99	487 / 8	Wayne R. Lewis	1616 / 1241	134.68
100	487 / 17	Wayne R. Lewis	1616 / 1235	125.30
Lewis County				
101	10C / 16	Thomas C. Kennedy Testamentary Trust	W34 / 428	105.00
102	10C / 17	Norman Jackson	584 / 191	34.00
103	10C / 18	Shannon M. & Matthew C. Arnett	660 / 422	114.40
104	10D / 25.3	David S. & Kimberly S. Ledoux	625 / 688	24.75
105	10D / 25.1	Larry O. Warner	571 / 273	32.10
106	10D / 25	David S. & Kimberly S. Ledoux	724 / 496	32.34

FILE NO: 32-36-G-19  
DRAWING NO: Schoen 1205 S-10H Well Plat  
SCALE: 1" = 2000'  
MINIMUM DEGREE OF ACCURACY:  
Submeter  
PROVEN SOURCE OF ELEVATION:  
CORS, Bridgeport, WV



DATE: September 14 2023  
OPERATOR'S WELL NO. Schoen 1205 S-10H  
API WELL NO  
47 — 033 — 06010  
STATE COUNTY PERMIT

WELL TYPE:  OIL  GAS  LIQUID INJECTION  WASTE DISPOSAL  
(IF GAS) PRODUCTION:  STORAGE  DEEP  SHALLOW

LOCATION: ELEVATION: 1,407.3' WATERSHED: Middle West Fork Creek

Top: Mount Clare  
QUADRANGLE: Btm: Berlin

DISTRICT: Grant / Hackers Creek

COUNTY: ~~Lincoln~~ **09/28/2023** **Leads**

SURFACE OWNER: George & Rosanne Schoen

ACREAGE: 65.00

ROYALTY OWNER: Willa Post Robey, et al

LEASE NO: \_\_\_\_\_ ACREAGE: 78.20

PROPOSED WORK:  DRILL  CONVERT  DRILL DEEPER  FRACTURE OR STIMULATE  PLUG OFF OLD FORMATION  
 PERFORATE NEW FORMATION  OTHER PHYSICAL CHANGE IN WELL (SPECIFY) BH-MOD 7,230' TVD

PLUG AND ABANDON  CLEAN OUT AND REPLUG TARGET FORMATION: Marcellus Shale ESTIMATED DEPTH: 30,458' MD

WELL OPERATOR: HG Energy II Appalachia, LLC

DESIGNATED AGENT: Diane C. White

ADDRESS: 5260 Dupont Road  
Parkersburg, WV 26101

ADDRESS: 5260 Dupont Road  
Parkersburg, WV 26101



WW-6A1  
(5/13)

Operator's Well No. Schoen 1205 S-10H

**INFORMATION SUPPLIED UNDER WEST VIRGINIA CODE  
Chapter 22, Article 6A, Section 5(a)(5)  
IN LIEU OF FILING LEASE(S) AND OTHER CONTINUING CONTRACT(S)**

Under the oath required to make the verification on page 1 of this Notice and Application, I depose and say that I am the person who signed the Notice and Application for the Applicant, and that –

- (1) the tract of land is the same tract described in this Application, partly or wholly depicted in the accompanying plat, and described in the Construction and Reclamation Plan;
- (2) the parties and recordation data (if recorded) for lease(s) or other continuing contract(s) by which the Applicant claims the right to extract, produce or market the oil or gas are as follows:

Lease Name or Number	Grantor, Lessor, etc.	Grantee, Lessee, etc.	Royalty	Book/Page
-------------------------	-----------------------	-----------------------	---------	-----------

\*\*See Attached Sheets\*\*

**Acknowledgement of Possible Permitting/Approval  
In Addition to the Office of Oil and Gas**

The permit applicant for the proposed well work addressed in this application hereby acknowledges the possibility of the need for permits and/or approvals from local, state, or federal entities in addition to the DEP, Office of Oil and Gas, including but not limited to the following:

- WV Division of Water and Waste Management
- WV Division of Natural Resources WV Division of Highways
- U.S. Army Corps of Engineers
- U.S. Fish and Wildlife Service
- County Floodplain Coordinator

The applicant further acknowledges that any Office of Oil and Gas permit in no way overrides, replaces, or nullifies the need for other permits/approvals that may be necessary and further affirms that all needed permits/approvals should be acquired from the appropriate authority before the affected activity is initiated.

Well Operator: HG Energy II Appalachia, LLC  
 By: Diane White *Diane White*  
 Its: Agent

Page 1 of 7

09/29/2023



HG Energy II Appalachia, LLC - Schoen 1205 S-10H Lease Chain

1205S 10H	LEGACY LEASE NUMBER	TAX MAP	LEASE NUMBER	GRANTOR/LESSOR	GRANTEE/LESSEE	ROYALTY	DEED BOOK	PAGE
1	LC074399	12-0447-0001-0000 12-0447-0002-0000	Q100514000	A. B. POST, WIDOWER; P. S. ROBEY AND WILLA ROBEY, EACH IN HIS OWN RIGHT AS HUSBAND AND WIFE; ELLA LOUISE MAXWELL AND ISAAC H. MAXWELL, HER HUSBAND; FRANCES AND GEORGE B. VIEWEG, HER HUSBAND	HOPE NATURAL GAS COMPANY	NOT LESS THAN 1/8	900	269
				HOPE NATURAL GAS COMPANY	CONSOLIDATED GAS SUPPLY CORPORATION	CONFIRMATORY DEED	903	179
				CONSOLIDATED GAS SUPPLY CORPORATION	CONSOLIDATED GAS TRANSMISSION CORPORATION	ASSIGNMENT	1136	250
				CONSOLIDATED GAS TRANSMISSION CORPORATION	CNG TRANSMISSION CORPORATION	MERGER/NAME CHANGE	51	795
				CNG TRANSMISSION CORPORATION	DOMINION TRANSMISSION, INC.	MERGER/NAME CHANGE	58	362
				DOMINION TRANSMISSION, INC.	CNX GAS COMPANY LLC	MEMORANDUM FARMOUT AGREEMENT	1522	33
				DOMINION TRANSMISSION, INC.	CNX GAS COMPANY LLC	FIRST AMENDMENT TO MEMORANDUM OF FARMOUT AGREEMENT	1524	491
				CNX GAS COMPANY LLC	NOBLE ENERGY, INC.	LIMITED PARTIAL ASSIGNMENT (50%)	1543	1235
				DOMINION TRANSMISSION, INC.	CNX GAS COMPANY LLC AND NOBLE ENERGY, INC.	PARTIAL ASSIGNMENT (32%)	1576	125
				CNX GAS COMPANY LLC	NOBLE ENERGY, INC.	ASSIGNMENT	1584	942
				NOBLE ENERGY, INC.	HG ENERGY II APPALACHIA, LLC	ASSIGNMENT	1600	692
				DOMINION TRANSMISSION, INC.	DOMINION ENERGY TRANSMISSION, INC.	MERGER/NAME CHANGE	WVSOS	
				DOMINION ENERGY TRANSMISSION, INC.	HG ENERGY II APPALACHIA, LLC	SECOND AMENDMENT TO MEMORANDUM OF FARMOUT AGREEMENT	1601	581
				DOMINION ENERGY TRANSMISSION, INC. DOMINION ENERGY TRANSMISSION, INC.	HG ENERGY II APPALACHIA, LLC HG ENERGY II APPALACHIA, LLC	THIRD AMENDMENT TO MEMORANDUM OF FARMOUT AGREEMENT ASSIGNMENT (68%)	1621 1637	1295 1081
4	ANTERO 5	12-0447-0003-0000 13-0447-0003-0002 13-0447-0003-0003 12-0447-0003-0004 12-0447-0003-0005	ANTERO 5	JOHN H. GERLACH AND CHARLOTTE C. GERLACH, HIS WIFE	JACKSON L. SMITH, d/b/a WEST VIRGINIA ENERGIES	NOT LESS THAN 1/8	1108	569
				JACKSON L. SMITH, d/b/a WEST VIRGINIA ENERGIES	BERRY ENERGY CONSULTANTS & MANAGERS INC	ASSIGNMENT	1140	674
				BERRY ENERGY CONSULTANTS & MANAGERS INC	J & J ENTERPRISES INC	ASSIGNMENT	1110	890
				J & J ENTERPRISES INC	EASTERN AMERICAN ENERGY CORPORATION	CONFIRMATORY DEED	1200	1110
				EASTERN AMERICAN ENERGY CORPORATION	ENERGY CORPORATION OF AMERICA	MERGER/NAME CHANGE	59	879
				ENERGY CORPORATION OF AMERICA	ANTERO RESOURCES APPALACHIAN CORPORATION	ASSIGNMENT	1495	314
				ANTERO RESOURCES APPALACHIAN CORPORATION	HG ENERGY II APPALACHIA, LLC	ASSIGNMENT	1671	74
8	LC008512	13-0447-0005-0000 13-0447-0005-0001 13-0447-0005-0003 13-0447-0005-0004 13-0447-0005-0006 13-0447-0005-0007 13-0447-0005-0008 13-0447-0005-0009 13-0447-0005-0010 13-0447-0005-0011 13-0447-0005-0012 13-0447-0005-0013 13-0447-0005-0014 13-0447-0005-0015 13-0447-0005-0016 13-0447-0005-0017 13-0447-0005-0018 13-0447-0005-0019 13-0447-0005-0021 13-0447-0005-0022 13-0447-0005-0023 13-0447-0005-0024 13-0447-0005-0025 p/o 12-0447-0023-0031 p/o 12-0447-0027-0000	Q100305000	L. B. DAVIS AND S. J. DAVIS, HIS WIFE	SOUTH PENN OIL COMPANY	NOT LESS THAN 1/8	121	150
				SOUTH PENN OIL COMPANY	HOPE NATURAL GAS COMPANY	ASSIGNMENT	204	402
				HOPE NATURAL GAS COMPANY	CONSOLIDATED GAS SUPPLY CORPORATION	CONFIRMATORY DEED	903	179
				CONSOLIDATED GAS SUPPLY CORPORATION	CONSOLIDATED GAS TRANSMISSION CORPORATION	ASSIGNMENT	1136	250
				CONSOLIDATED GAS TRANSMISSION CORPORATION	CNG TRANSMISSION CORPORATION	MERGER/NAME CHANGE	51	795
				CNG TRANSMISSION CORPORATION	DOMINION TRANSMISSION, INC.	MERGER/NAME CHANGE	58	362
				DOMINION TRANSMISSION, INC.	CNX GAS COMPANY LLC	MEMORANDUM FARMOUT AGREEMENT	1522	33
				DOMINION TRANSMISSION, INC.	CNX GAS COMPANY LLC	FIRST AMENDMENT TO MEMORANDUM OF FARMOUT AGREEMENT	1524	491
				CNX GAS COMPANY LLC	NOBLE ENERGY, INC.	LIMITED PARTIAL ASSIGNMENT (50%)	1543	1235
				DOMINION TRANSMISSION, INC.	CNX GAS COMPANY LLC AND NOBLE ENERGY, INC.	PARTIAL ASSIGNMENT (32%)	1576	125
				CNX GAS COMPANY LLC	NOBLE ENERGY, INC.	ASSIGNMENT	1584	942
				NOBLE ENERGY, INC.	HG ENERGY II APPALACHIA, LLC	ASSIGNMENT	1600	692
				DOMINION TRANSMISSION, INC.	DOMINION ENERGY TRANSMISSION, INC.	MERGER/NAME CHANGE	WVSOS	
				DOMINION ENERGY TRANSMISSION, INC.	HG ENERGY II APPALACHIA, LLC	SECOND AMENDMENT TO MEMORANDUM OF FARMOUT AGREEMENT	1601	581
				DOMINION ENERGY TRANSMISSION, INC.	HG ENERGY II APPALACHIA, LLC	THIRD AMENDMENT TO MEMORANDUM OF FARMOUT AGREEMENT	1621	1295
				DOMINION ENERGY TRANSMISSION, INC.	HG ENERGY II APPALACHIA, LLC	ASSIGNMENT (68%)	1637	1081



10	LC078281	12-0447-0036-0000 p/o 12-0447-0036-0001	Q100950000	LEWIS C. SWISHER AND ALMA SWISHER, HIS WIFE	CONSOLIDATED GAS SUPPLY CORPORATION	NOT LESS THAN 1/8	955	378
				CONSOLIDATED GAS SUPPLY CORPORATION	CONSOLIDATED GAS TRANSMISSION CORPORATION	ASSIGNMENT	1136	250
				CONSOLIDATED GAS TRANSMISSION CORPORATION	CNG TRANSMISSION CORPORATION	MERGER/NAME CHANGE	51	795
				CNG TRANSMISSION CORPORATION	DOMINION TRANSMISSION, INC.	MERGER/NAME CHANGE	58	362
				DOMINION TRANSMISSION, INC.	CNX GAS COMPANY LLC	MEMORANDUM FARMOUT AGREEMENT	1522	33
				CNX GAS COMPANY LLC	NOBLE ENERGY, INC.	LIMITED PARTIAL ASSIGNMENT (50%)	1543	1235
				DOMINION TRANSMISSION, INC.	CNX GAS COMPANY LLC AND NOBLE ENERGY, INC.	PARTIAL ASSIGNMENT (32%)	1576	125
				CNX GAS COMPANY LLC	NOBLE ENERGY, INC.	ASSIGNMENT	1584	942
				NOBLE ENERGY, INC.	HG ENERGY II APPALACHIA, LLC	ASSIGNMENT	1600	692
				DOMINION TRANSMISSION, INC.	DOMINION ENERGY TRANSMISSION, INC.	MERGER/NAME CHANGE	WVSOS	
DOMINION ENERGY TRANSMISSION, INC.	HG ENERGY II APPALACHIA, LLC	SECOND AMENDMENT TO MEMORANDUM OF FARMOUT AGREEMENT	1601	581				
DOMINION ENERGY TRANSMISSION, INC.	HG ENERGY II APPALACHIA, LLC	THIRD AMENDMENT TO MEMORANDUM OF FARMOUT AGREEMENT	1621	1295				
DOMINION ENERGY TRANSMISSION, INC.	HG ENERGY II APPALACHIA, LLC	ASSIGNMENT (68%)	1637	1081				
12	LC068012	12-0467-0002-0000 12-0467-0002-0001 12-0467-0002-0002	Q100847000	FRENCH S. YOUNG AND ANNA J. YOUNG, HUSBAND AND WIFE	HOPE NATURAL GAS COMPANY	NOT LESS THAN 1/8	808	416
				HOPE NATURAL GAS COMPANY	CONSOLIDATED GAS SUPPLY CORPORATION	CONFIRMATORY DEED	903	179
				CONSOLIDATED GAS SUPPLY CORPORATION	CONSOLIDATED GAS TRANSMISSION CORPORATION	ASSIGNMENT	1136	250
				CONSOLIDATED GAS TRANSMISSION CORPORATION	CNG TRANSMISSION CORPORATION	MERGER/NAME CHANGE	51	795
				CNG TRANSMISSION CORPORATION	DOMINION TRANSMISSION, INC.	MERGER/NAME CHANGE	58	362
				DOMINION TRANSMISSION, INC.	CNX GAS COMPANY LLC	MEMORANDUM FARMOUT AGREEMENT	1522	33
				DOMINION TRANSMISSION, INC.	CNX GAS COMPANY LLC	FIRST AMENDMENT TO MEMORANDUM OF FARMOUT AGREEMENT	1524	491
				CNX GAS COMPANY LLC	NOBLE ENERGY, INC.	LIMITED PARTIAL ASSIGNMENT (50%)	1543	1235
				DOMINION TRANSMISSION, INC.	CNX GAS COMPANY LLC AND NOBLE ENERGY, INC.	PARTIAL ASSIGNMENT (32%)	1576	125
				CNX GAS COMPANY LLC	NOBLE ENERGY, INC.	ASSIGNMENT	1584	942
NOBLE ENERGY, INC.	HG ENERGY II APPALACHIA, LLC	ASSIGNMENT	1600	692				
DOMINION TRANSMISSION, INC.	DOMINION ENERGY TRANSMISSION, INC.	MERGER/NAME CHANGE	WVSOS					
DOMINION ENERGY TRANSMISSION, INC.	HG ENERGY II APPALACHIA, LLC	SECOND AMENDMENT TO MEMORANDUM OF FARMOUT AGREEMENT	1601	581				
DOMINION ENERGY TRANSMISSION, INC.	HG ENERGY II APPALACHIA, LLC	THIRD AMENDMENT TO MEMORANDUM OF FARMOUT AGREEMENT	1621	1295				
DOMINION ENERGY TRANSMISSION, INC.	HG ENERGY II APPALACHIA, LLC	ASSIGNMENT (68%)	1637	1081				
13	LC078282	12-0447-0044-0000 12-0447-0044-0001 12-0447-0044-0002 12-0447-0044-0003 12-0447-0044-0004 12-0447-0044-000 12-0447-0051-0000 p/o 12-0447-0036-0001	Q100408000	LEWIS C. SWISHER AND ALMA SWISHER, HIS WIFE	CONSOLIDATED GAS SUPPLY CORPORATION	NOT LESS THAN 1/8	955	382
				CONSOLIDATED GAS SUPPLY CORPORATION	CONSOLIDATED GAS TRANSMISSION CORPORATION	ASSIGNMENT	1136	250
				CONSOLIDATED GAS TRANSMISSION CORPORATION	CNG TRANSMISSION CORPORATION	MERGER/NAME CHANGE	51	795
				CNG TRANSMISSION CORPORATION	DOMINION TRANSMISSION, INC.	MERGER/NAME CHANGE	58	362
				DOMINION TRANSMISSION, INC.	CNX GAS COMPANY LLC	MEMORANDUM FARMOUT AGREEMENT	1522	33
				DOMINION TRANSMISSION, INC.	CNX GAS COMPANY LLC	FIRST AMENDMENT TO MEMORANDUM OF FARMOUT AGREEMENT	1524	491
				CNX GAS COMPANY LLC	NOBLE ENERGY, INC.	LIMITED PARTIAL ASSIGNMENT (50%)	1543	1235
				DOMINION TRANSMISSION, INC.	CNX GAS COMPANY LLC AND NOBLE ENERGY, INC.	PARTIAL ASSIGNMENT (32%)	1576	125
				CNX GAS COMPANY LLC	NOBLE ENERGY, INC.	ASSIGNMENT	1584	942
				NOBLE ENERGY, INC.	HG ENERGY II APPALACHIA, LLC	ASSIGNMENT	1600	692
DOMINION TRANSMISSION, INC.	DOMINION ENERGY TRANSMISSION, INC.	MERGER/NAME CHANGE	WVSOS					
DOMINION ENERGY TRANSMISSION, INC.	HG ENERGY II APPALACHIA, LLC	SECOND AMENDMENT TO MEMORANDUM OF FARMOUT AGREEMENT	1601	581				
DOMINION ENERGY TRANSMISSION, INC.	HG ENERGY II APPALACHIA, LLC	THIRD AMENDMENT TO MEMORANDUM OF FARMOUT AGREEMENT	1621	1295				
DOMINION ENERGY TRANSMISSION, INC.	HG ENERGY II APPALACHIA, LLC	ASSIGNMENT (68%)	1637	1081				
14	LC095043	12-0467-0030-0000 12-0467-0030-0001 p/o 12-0467-0032-0003 12-0467-033-0000 p/o 12-0467-0033-0001	Q100542000	M.M.F. RANDOLPH AND S. F. RANDOLPH, HUSBAND AND WIFE	HOPE NATURAL GAS COMPANY	NOT LESS THAN 1/8	152	262
				HOPE NATURAL GAS COMPANY	CONSOLIDATED GAS SUPPLY CORPORATION	CONFIRMATORY DEED	903	179
				CONSOLIDATED GAS SUPPLY CORPORATION	CONSOLIDATED GAS TRANSMISSION CORPORATION	ASSIGNMENT	1136	250
				CONSOLIDATED GAS TRANSMISSION CORPORATION	CNG TRANSMISSION CORPORATION	MERGER/NAME CHANGE	51	795
				CNG TRANSMISSION CORPORATION	DOMINION TRANSMISSION, INC.	MERGER/NAME CHANGE	58	362
				DOMINION TRANSMISSION, INC.	CNX GAS COMPANY LLC	MEMORANDUM FARMOUT AGREEMENT	1522	33
				CNX GAS COMPANY LLC	NOBLE ENERGY, INC.	LIMITED PARTIAL ASSIGNMENT (50%)	1543	1235
				DOMINION TRANSMISSION, INC.	CNX GAS COMPANY LLC AND NOBLE ENERGY, INC.	PARTIAL ASSIGNMENT (32%)	1576	125



	LC005073	12-0467-0034-0000 12-0467-0035-0000 12-0467-0036-0000 12-0467-0036-0001 p/o 12-467-0032-0000	Q100572000	CNX GAS COMPANY LLC	NOBLE ENERGY, INC.	ASSIGNMENT	1584	942				
				DOMINION TRANSMISSION, INC.	DOMINION ENERGY TRANSMISSION, INC.	MERGER/NAME CHANGE	WVSOS					
				NOBLE ENERGY, INC.	HG ENERGY II APPALACHIA, LLC	ASSIGNMENT	1600	692				
				DOMINION ENERGY TRANSMISSION, INC.	HG ENERGY II APPALACHIA, LLC	SECOND AMENDMENT TO MEMORANDUM OF FARMOUT AGREEMENT	1601	581				
				DOMINION ENERGY TRANSMISSION, INC.	HG ENERGY II APPALACHIA, LLC	THIRD AMENDMENT TO MEMORANDUM OF FARMOUT AGREEMENT	1621	1295				
				DOMINION ENERGY TRANSMISSION, INC.	HG ENERGY II APPALACHIA, LLC	ASSIGNMENT (68%)	1637	1081				
17	LC075380	12-0467-0020-0000 12-0467-0020-0001 12-0467-0031-0000	Q100586000	MARY HOLBERT ELLYSON AND R. G. ELLYSON, HER HUSBAND; DELLA HOLBERT HARRIS AND STANLEY R. HARRIS, HER HUSBAND; HARRY E. HOLBERT AND MARY RUTH HOLBERT, HIS WIFE; EDWARD SNYDER AND VIOLET SNYDER, HIS WIFE; WILLIAM G. HOLBERT JR., A MARRIED MAN; SMITH F. HOLBERT AND GRACE HOLBERT, HIS WIFE; CLAUDIA L. HOLBERT, WIFE OF WILLIAM G. HOLBERT JR.; MARY ETHEL YOST, A MARRIED WOMAN; FRANK A. YOST, HUSBAND OF MARY ETHEL YOST; HELEN HAMILTON AND WILLIAM H. HAMILTON, HER HUSBAND; GEO. B. HOLBERT AND ELOISE V. HOLBERT, HIS WIFE; MARIE MCDUGAL AND RAY MCDUGAL, HER HUSBAND; EMMA JEANNE HOLT, DIVORCED; MARY K. NIXON AND RONALD E. NIXON, HER HUSBAND; RALPH S. SNYDER, WIDOWER; LOUISE NESSELROTTE AND HOMER NESSELROTTE, HER HUSBAND; CLYDE P. SNYDER, DIVORCED; CLARICE HOLBERT, WIDOW; DESSIE HOLBERT, WIDOW; A. W. HAMILTON, WIDOWER; A. L. LAYFIELD, WIDOWER; CATHERINE L. HOLBERT, WIDOW; C. R. HOLBERT, SR. AND ANNA M. HOLBERT, HIS WIFE; KATHRYN H. HENRY, WIDOW; CARL C. HOLBERT AND VIRGINIA L. HOLBERT, HIS WIFE; LOUISE A. EVANS AND T. J. EVANS, HER HUSBAND; JOHN L. HOLBERT AND LUCILLE E. HOLBERT, HIS WIFE; GLENNA FLOYD AND V. VERYL FLOYD, HER HUSBAND; BETTY L. LAYFIELD, SINGLE AND H. R. HOLBERT AND MARIE HOLBERT, HIS WIFE	CONSOLIDATED GAS SUPPLY CORPORATION	NOT LESS THAN 1/8	1023	569				
				CONSOLIDATED GAS SUPPLY CORPORATION	CONSOLIDATED GAS TRANSMISSION CORPORATION	ASSIGNMENT	1136	250				
				CONSOLIDATED GAS TRANSMISSION CORPORATION	CNG TRANSMISSION CORPORATION	MERGER/NAME CHANGE	51	795				
				CNG TRANSMISSION CORPORATION	DOMINION TRANSMISSION, INC.	MERGER/NAME CHANGE	58	362				
				DOMINION TRANSMISSION, INC.	CNX GAS COMPANY LLC	MEMORANDUM FARMOUT AGREEMENT	1522	33				
				DOMINION TRANSMISSION, INC.	CNX GAS COMPANY LLC	FIRST AMENDMENT TO MEMORANDUM OF FARMOUT AGREEMENT	1524	491				
				CNX GAS COMPANY LLC	NOBLE ENERGY, INC.	LIMITED PARTIAL ASSIGNMENT (50%)	1543	1235				
				DOMINION TRANSMISSION, INC.	CNX GAS COMPANY LLC AND NOBLE ENERGY, INC.	PARTIAL ASSIGNMENT (32%)	1576	125				
				CNX GAS COMPANY LLC	NOBLE ENERGY, INC.	ASSIGNMENT	1584	942				
				NOBLE ENERGY, INC.	HG ENERGY II APPALACHIA, LLC	ASSIGNMENT	1600	692				
				DOMINION TRANSMISSION, INC.	DOMINION ENERGY TRANSMISSION, INC.	MERGER/NAME CHANGE	WVSOS					
				DOMINION ENERGY TRANSMISSION, INC.	HG ENERGY II APPALACHIA, LLC	SECOND AMENDMENT TO MEMORANDUM OF FARMOUT AGREEMENT	1601	581				
				DOMINION ENERGY TRANSMISSION, INC.	HG ENERGY II APPALACHIA, LLC	THIRD AMENDMENT TO MEMORANDUM OF FARMOUT AGREEMENT	1621	1295				
				DOMINION ENERGY TRANSMISSION, INC.	HG ENERGY II APPALACHIA, LLC	ASSIGNMENT (68%)	1637	1081				
				22	LC066644	p/o 12-0467-0053-0000	Q101094000	W. HAYMOND DAWSON AND RACHEL E. DAWSON, HUSBAND AND WIFE	HOPE NATURAL GAS COMPANY	NOT LESS THAN 1/8	776	210
								HOPE NATURAL GAS COMPANY	CONSOLIDATED GAS SUPPLY CORPORATION	CONFIRMATORY DEED	903	179
								CONSOLIDATED GAS SUPPLY CORPORATION	CONSOLIDATED GAS TRANSMISSION CORPORATION	ASSIGNMENT	1136	250
CONSOLIDATED GAS TRANSMISSION CORPORATION	CNG TRANSMISSION CORPORATION	MERGER/NAME CHANGE	51					795				
CNG TRANSMISSION CORPORATION	DOMINION TRANSMISSION, INC.	MERGER/NAME CHANGE	58					362				
DOMINION TRANSMISSION, INC.	CNX GAS COMPANY LLC	MEMORANDUM FARMOUT AGREEMENT	1522					33				
DOMINION ENERGY TRANSMISSION, INC.	HG ENERGY II APPALACHIA, LLC	FIRST AMENDMENT TO MEMORANDUM OF FARMOUT AGREEMENT	1524					491				
CNX GAS COMPANY LLC	NOBLE ENERGY, INC.	LIMITED PARTIAL ASSIGNMENT (50%)	1543					1235				
DOMINION TRANSMISSION, INC.	CNX GAS COMPANY LLC AND NOBLE ENERGY, INC.	PARTIAL ASSIGNMENT (32%)	1576					125				



				CNX GAS COMPANY LLC	NOBLE ENERGY, INC.	ASSIGNMENT	1584	942				
				DOMINION TRANSMISSION, INC.	DOMINION ENERGY TRANSMISSION, INC.	MERGER/NAME CHANGE	WVSOS					
				NOBLE ENERGY, INC.	HG ENERGY II APPALACHIA, LLC	ASSIGNMENT	1600	692				
				DOMINION ENERGY TRANSMISSION, INC.	HG ENERGY II APPALACHIA, LLC	SECOND AMENDMENT TO MEMORANDUM OF FARMOUT AGREEMENT	1601	581				
				DOMINION ENERGY TRANSMISSION, INC.	HG ENERGY II APPALACHIA, LLC	THIRD AMENDMENT TO MEMORANDUM OF FARMOUT AGREEMENT	1621	1295				
				DOMINION ENERGY TRANSMISSION, INC.	HG ENERGY II APPALACHIA, LLC	ASSIGNMENT (68%)	1637	1081				
26	LC043728	12-0447-0006-0000 13-0447-0006-0001 13-2105-0056-0000 13-2105-0057-0000 13-2105-0058-0000 13-2105-0060-0000 13-2105-0061-0000 13-2105-0063-0000 13-2105-0064-0000 13-2105-0065-0000 13-2105-0067-0000 13-2105-0069-0000 13-2105-0071-0000 13-2105-0073-0000, 13-2105-0118-0000 THRU 13-2105-0122-0000 p/o 12-0427-0028-0000	Q100789000	MILTON S. DAVIS AND MARY I. DAVIS	OLANDUS WEST	NOT LESS THAN 1/8	156	75				
				OLANDUS WEST	JNO. J. P. O'BRIEN	ASSIGNMENT	155	409				
				JNO. J. P. O'BRIEN	GRASSELLI CHEMICAL COMPANY	ASSIGNMENT	158	490				
				GRASSELLI CHEMICAL COMPANY	HOPE NATURAL GAS COMPANY	ASSIGNMENT	381	163				
				HOPE NATURAL GAS COMPANY	CONSOLIDATED GAS SUPPLY CORPORATION	CONFIRMATORY DEED	903	179				
				CONSOLIDATED GAS SUPPLY CORPORATION	CONSOLIDATED GAS TRANSMISSION CORPORATION	ASSIGNMENT	1136	250				
				CONSOLIDATED GAS TRANSMISSION CORPORATION	CNG TRANSMISSION CORPORATION	MERGER/NAME CHANGE	51	795				
				CNG TRANSMISSION CORPORATION	DOMINION TRANSMISSION, INC.	MERGER/NAME CHANGE	58	362				
				DOMINION TRANSMISSION, INC.	CNX GAS COMPANY LLC	MEMORANDUM FARMOUT AGREEMENT	1522	33				
				DOMINION TRANSMISSION, INC.	CNX GAS COMPANY LLC	FIRST AMENDMENT TO MEMORANDUM OF FARMOUT AGREEMENT	1524	491				
				CNX GAS COMPANY LLC	NOBLE ENERGY, INC.	LIMITED PARTIAL ASSIGNMENT (50%)	1543	1235				
				DOMINION TRANSMISSION, INC.	CNX GAS COMPANY LLC AND NOBLE ENERGY, INC.	PARTIAL ASSIGNMENT (32%)	1576	125				
				CNX GAS COMPANY LLC	NOBLE ENERGY, INC.	ASSIGNMENT	1584	942				
				NOBLE ENERGY, INC.	HG ENERGY II APPALACHIA, LLC	ASSIGNMENT	1600	692				
				DOMINION TRANSMISSION, INC.	DOMINION ENERGY TRANSMISSION, INC.	MERGER/NAME CHANGE	WVSOS					
				DOMINION ENERGY TRANSMISSION, INC.	HG ENERGY II APPALACHIA, LLC	SECOND AMENDMENT TO MEMORANDUM OF FARMOUT AGREEMENT	1601	581				
				DOMINION ENERGY TRANSMISSION, INC.	HG ENERGY II APPALACHIA, LLC	THIRD AMENDMENT TO MEMORANDUM OF FARMOUT AGREEMENT	1621	1295				
				DOMINION ENERGY TRANSMISSION, INC.	HG ENERGY II APPALACHIA, LLC	ASSIGNMENT (68%)	1637	1081				
				29	HGII 1689	12-0447-0028-0000	HGII 1689	RANDOLPH, ALAN M. & DEBORAH K.	HG ENERGY II APPALACHIA, LLC	NOT LESS THAN 1/8	1711	105
				36	FEE	12-0467-0006-0000	FEE	JACKSON L. SMITH & CHARLOTTE ANN SMITH	HG ENERGY II APPALACHIA, LLC	DEED	1708	858
44	FEE	12-0467-0003-0000	FEE	JACKSON L. SMITH & CHARLOTTE ANN SMITH	HG ENERGY II APPALACHIA, LLC	DEED	1708	858				
50	LC066643	12-0467-0040-0000 p/o 12-0467-0053-0000	Q100828000	W. HAYMOND DAWSON AND RACHEL E. DAWSON, HUSBAND AND WIFE	HOPE NATURAL GAS COMPANY	NOT LESS THAN 1/8	776	213				
				HOPE NATURAL GAS COMPANY	CONSOLIDATED GAS SUPPLY CORPORATION	CONFIRMATORY DEED	903	179				
				CONSOLIDATED GAS SUPPLY CORPORATION	CONSOLIDATED GAS TRANSMISSION CORPORATION	ASSIGNMENT	1136	250				
				CONSOLIDATED GAS TRANSMISSION CORPORATION	CNG TRANSMISSION CORPORATION	MERGER/NAME CHANGE	51	795				
				CNG TRANSMISSION CORPORATION	DOMINION TRANSMISSION, INC.	MERGER/NAME CHANGE	58	362				
				DOMINION TRANSMISSION, INC.	CNX GAS COMPANY LLC	MEMORANDUM FARMOUT AGREEMENT	1522	33				
				DOMINION ENERGY TRANSMISSION, INC.	HG ENERGY II APPALACHIA, LLC	FIRST AMENDMENT TO MEMORANDUM OF FARMOUT AGREEMENT	1524	491				
				CNX GAS COMPANY LLC	NOBLE ENERGY, INC.	LIMITED PARTIAL ASSIGNMENT (50%)	1543	1235				
				DOMINION TRANSMISSION, INC.	CNX GAS COMPANY LLC AND NOBLE ENERGY, INC.	PARTIAL ASSIGNMENT (32%)	1576	125				
				CNX GAS COMPANY LLC	NOBLE ENERGY, INC.	ASSIGNMENT	1584	942				
				DOMINION TRANSMISSION, INC.	DOMINION ENERGY TRANSMISSION, INC.	MERGER/NAME CHANGE	WVSOS					
				NOBLE ENERGY, INC.	HG ENERGY II APPALACHIA, LLC	ASSIGNMENT	1600	692				
				DOMINION ENERGY TRANSMISSION, INC.	HG ENERGY II APPALACHIA, LLC	SECOND AMENDMENT TO MEMORANDUM OF FARMOUT AGREEMENT	1601	581				
				DOMINION ENERGY TRANSMISSION, INC.	HG ENERGY II APPALACHIA, LLC	THIRD AMENDMENT TO MEMORANDUM OF FARMOUT AGREEMENT	1621	1295				
				DOMINION ENERGY TRANSMISSION, INC.	HG ENERGY II APPALACHIA, LLC	ASSIGNMENT (68%)	1637	1081				
				KATE STOUT, WIDOW	CONSOLIDATED GAS SUPPLY CORPORATION	NOT LESS THAN 1/8	1022	330				
				CONSOLIDATED GAS SUPPLY CORPORATION	CONSOLIDATED GAS TRANSMISSION CORPORATION	ASSIGNMENT	1136	250				
				CONSOLIDATED GAS TRANSMISSION CORPORATION	CNG TRANSMISSION CORPORATION	MERGER/NAME CHANGE	51	795				
				CNG TRANSMISSION CORPORATION	DOMINION TRANSMISSION, INC.	MERGER/NAME CHANGE	58	362				
				DOMINION TRANSMISSION, INC.	CNX GAS COMPANY LLC	MEMORANDUM FARMOUT AGREEMENT	1522	33				
				CNX GAS COMPANY LLC	NOBLE ENERGY, INC.	LIMITED PARTIAL ASSIGNMENT (50%)	1543	1235				
				DOMINION TRANSMISSION, INC.	CNX GAS COMPANY LLC AND NOBLE ENERGY, INC.	PARTIAL ASSIGNMENT (32%)	1576	125				



62	LC073275	12-0487-0006-0000	Q100713000	CNX GAS COMPANY LLC	NOBLE ENERGY, INC.	ASSIGNMENT	1584	942				
				DOMINION TRANSMISSION, INC.	DOMINION ENERGY TRANSMISSION, INC.	MERGER/NAME CHANGE	WVSOS					
				NOBLE ENERGY, INC.	HG ENERGY II APPALACHIA, LLC	ASSIGNMENT	1600	692				
				DOMINION ENERGY TRANSMISSION, INC.	HG ENERGY II APPALACHIA, LLC	SECOND AMENDMENT TO MEMORANDUM OF FARMOUT AGREEMENT	1601	581				
				DOMINION ENERGY TRANSMISSION, INC.	HG ENERGY II APPALACHIA, LLC	THIRD AMENDMENT TO MEMORANDUM OF FARMOUT AGREEMENT	1621	1295				
				DOMINION ENERGY TRANSMISSION, INC.	HG ENERGY II APPALACHIA, LLC	ASSIGNMENT (68%)	1637	1081				
63	LC066586	12-0487-0008-0000 12-0488-0024-0000	Q10109000	C. ROSS LEWIS AND OPAL LEWIS, HIS WIFE	HOPE NATURAL GAS COMPANY	NOT LESS THAN 1/8	775	177				
				HOPE NATURAL GAS COMPANY	CONSOLIDATED GAS SUPPLY CORPORATION	CONFIRMATORY DEED	903	179				
				CONSOLIDATED GAS SUPPLY CORPORATION	CONSOLIDATED GAS TRANSMISSION CORPORATION	ASSIGNMENT	1136	250				
				CONSOLIDATED GAS TRANSMISSION CORPORATION	CNG TRANSMISSION CORPORATION	MERGER/NAME CHANGE	51	795				
				CNG TRANSMISSION CORPORATION	DOMINION TRANSMISSION, INC.	MERGER/NAME CHANGE	58	362				
				DOMINION TRANSMISSION, INC.	CNX GAS COMPANY LLC	MEMORANDUM FARMOUT AGREEMENT	1522	33				
				CNX GAS COMPANY LLC	NOBLE ENERGY, INC.	LIMITED PARTIAL ASSIGNMENT (50%)	1543	1235				
				DOMINION TRANSMISSION, INC.	CNX GAS COMPANY LLC AND NOBLE ENERGY, INC.	PARTIAL ASSIGNMENT (32%)	1576	125				
				CNX GAS COMPANY LLC	NOBLE ENERGY, INC.	ASSIGNMENT	1584	942				
				DOMINION TRANSMISSION, INC.	DOMINION ENERGY TRANSMISSION, INC.	MERGER/NAME CHANGE	WVSOS					
				NOBLE ENERGY, INC.	HG ENERGY II APPALACHIA, LLC	ASSIGNMENT	1600	692				
				DOMINION ENERGY TRANSMISSION, INC.	HG ENERGY II APPALACHIA, LLC	SECOND AMENDMENT TO MEMORANDUM OF FARMOUT AGREEMENT	1601	581				
				DOMINION ENERGY TRANSMISSION, INC.	HG ENERGY II APPALACHIA, LLC	THIRD AMENDMENT TO MEMORANDUM OF FARMOUT AGREEMENT	1621	1295				
				DOMINION ENERGY TRANSMISSION, INC.	HG ENERGY II APPALACHIA, LLC	ASSIGNMENT (68%)	1637	1081				
80	LC008511	12-0427-0027-0000 12-0427-0033-0000 12-0427-0033-0001 12-0427-0034-0000 13-2105-0001-0000 13-2105-0002-0000 13-2105-0002-0001 13-2105-0002-0002 13-2105-0004-0000 THRU 13-2105-0012-0000 13-2105-0021-0000 THRU 13-2105-0023-0000 13-2105-0041-0000 THRU 13-2105-0055-000 13-2105-0046-0001 13-2105-0116-0000 13-2105-0117-0000 13-2105-0117-0001 13-2103-0141-0000 13-2103-0148-0000 13-2103-0162-0000 13-2103-0176-0000 13-2103-0176-0001 13-2103-0176-0002 13-2103-0174-0000 13-2103-0175-0000 13-2104-0035-0000	Q100304000	D. L. NUTTER AND MARGARET R. NUTTER, HIS WIFE	SOUTH PENN OIL COMPANY	NOT LESS THAN 1/8	121	172				
				SOUTH PENN OIL COMPANY	HOPE NATURAL GAS COMPANY	ASSIGNMENT	204	402				
				HOPE NATURAL GAS COMPANY	CONSOLIDATED GAS SUPPLY CORPORATION	CONFIRMATORY DEED	903	179				
				CONSOLIDATED GAS SUPPLY CORPORATION	CONSOLIDATED GAS TRANSMISSION CORPORATION	ASSIGNMENT	1136	250				
				CONSOLIDATED GAS TRANSMISSION CORPORATION	CNG TRANSMISSION CORPORATION	MERGER/NAME CHANGE	51	795				
				CNG TRANSMISSION CORPORATION	DOMINION TRANSMISSION, INC.	MERGER/NAME CHANGE	58	362				
				DOMINION TRANSMISSION, INC.	CNX GAS COMPANY LLC	MEMORANDUM FARMOUT AGREEMENT	1522	33				
				DOMINION TRANSMISSION, INC.	CNX GAS COMPANY LLC	FIRST AMENDMENT TO MEMORANDUM OF FARMOUT AGREEMENT	1524	491				
				CNX GAS COMPANY LLC	NOBLE ENERGY, INC.	LIMITED PARTIAL ASSIGNMENT (50%)	1543	1235				
				DOMINION TRANSMISSION, INC.	CNX GAS COMPANY LLC AND NOBLE ENERGY, INC.	PARTIAL ASSIGNMENT (32%)	1576	125				
				CNX GAS COMPANY LLC	NOBLE ENERGY, INC.	ASSIGNMENT	1584	942				
				NOBLE ENERGY, INC.	HG ENERGY II APPALACHIA, LLC	ASSIGNMENT	1600	692				
				DOMINION TRANSMISSION, INC.	DOMINION ENERGY TRANSMISSION, INC.	MERGER/NAME CHANGE	WVSOS					
				DOMINION ENERGY TRANSMISSION, INC.	HG ENERGY II APPALACHIA, LLC	SECOND AMENDMENT TO MEMORANDUM OF FARMOUT AGREEMENT	1601	581				
				DOMINION ENERGY TRANSMISSION, INC.	HG ENERGY II APPALACHIA, LLC	THIRD AMENDMENT TO MEMORANDUM OF FARMOUT AGREEMENT	1621	1295				
				DOMINION ENERGY TRANSMISSION, INC.	HG ENERGY II APPALACHIA, LLC	ASSIGNMENT (68%)	1637	1081				
				92	LC070283	04-010C-0017-0000	Q100579000	ALVIN C. LEWIS AND OCIE LEWIS, HIS WIFE	HOPE NATURAL GAS COMPANY	NOT LESS THAN 1/8	268	337
								RAY J. BOYLES AND ETHEL BOYLES, HIS WIFE; MARIE RANDOLPH AND BROOKS RANDOLPH, HER HUSBAND; GEORGE JACKSON AND JULIA W. JACKSON, HIS WIFE; MARY ALKIRE, WIDOW; MELVINA COOKMAN; MARY M. JACKSON; APPALACHIAN ROYALTIES, INC.; ARNOLD C. SMITH AND PATRICIA SMITH, HIS WIFE; AND VIRGINIA LAURA SMITH	HOPE NATURAL GAS COMPANY	NOT LESS THAN 1/8	262	584
								HOPE NATURAL GAS COMPANY	CONSOLIDATED GAS SUPPLY CORPORATION	CONFIRMATORY DEED	294	89
								CONSOLIDATED GAS SUPPLY CORPORATION	CONSOLIDATED GAS TRANSMISSION CORPORATION	ASSIGNMENT	425	127
								CONSOLIDATED GAS TRANSMISSION CORPORATION	CNG TRANSMISSION CORPORATION	MERGER/NAME CHANGE	WVSOS	
								CNG TRANSMISSION CORPORATION	DOMINION TRANSMISSION, INC.	MERGER/NAME CHANGE	WVSOS	
DOMINION TRANSMISSION, INC.	CNX GAS COMPANY LLC	MEMORANDUM FARMOUT AGREEMENT	672					154				
CNX GAS COMPANY LLC	NOBLE ENERGY, INC.	LIMITED PARTIAL ASSIGNMENT (50%)	684					57				
DOMINION TRANSMISSION, INC.	CNX GAS COMPANY LLC AND NOBLE ENERGY, INC.	PARTIAL ASSIGNMENT (32%)	712					848				



				CNX GAS COMPANY LLC	NOBLE ENERGY, INC.	ASSIGNMENT	717	1
				DOMINION TRANSMISSION, INC.	DOMINION ENERGY TRANSMISSION, INC.	MERGER/NAME CHANGE	WVSOS	
				NOBLE ENERGY, INC.	HG ENERGY II APPALACHIA, LLC	ASSIGNMENT	722	170
				DOMINION ENERGY TRANSMISSION, INC.	HG ENERGY II APPALACHIA, LLC	SECOND AMENDMENT TO MEMORANDUM OF FARMOUT AGREEMENT	723	499
				DOMINION ENERGY TRANSMISSION, INC.	HG ENERGY II APPALACHIA, LLC	THIRD AMENDMENT TO MEMORANDUM OF FARMOUT AGREEMENT	734	558
				DOMINION ENERGY TRANSMISSION, INC.	HG ENERGY II APPALACHIA, LLC	ASSIGNMENT (68%)	LEWIS 736	220
93	LC073274	04-010C-0018-0000	Q100325000	EUGENIA F. MILLS ET VIR	HOPE NATURAL GAS COMPANY	NOT LESS THAN 1/8	339	329
				HOPE NATURAL GAS COMPANY	SOUTH PENN OIL COMPANY	ASSIGNMENT	91	259
				SOUTH PENN OIL COMPANY	HOPE NATURAL GAS COMPANY	ASSIGNMENT	120	247
				HOPE NATURAL GAS COMPANY	CONSOLIDATED GAS SUPPLY CORPORATION	CONFIRMATORY DEED	294	89
				CONSOLIDATED GAS SUPPLY CORPORATION	CONSOLIDATED GAS TRANSMISSION CORPORATION	ASSIGNMENT	425	127
				CONSOLIDATED GAS TRANSMISSION CORPORATION	CNG TRANSMISSION CORPORATION	MERGER/NAME CHANGE	WVSOS	
				CNG TRANSMISSION CORPORATION	DOMINION TRANSMISSION, INC.	MERGER/NAME CHANGE	WVSOS	
				DOMINION TRANSMISSION, INC.	CNX GAS COMPANY LLC	MEMORANDUM OF FARMOUT AGREEMENT	672	154
				CNX GAS COMPANY LLC	NOBLE ENERGY, INC.	LIMITED PARTIAL ASSIGNMENT (50%)	684	57
				DOMINION TRANSMISSION, INC.	CNX GAS COMPANY LLC AND NOBLE ENERGY, INC.	PARTIAL ASSIGNMENT (32%)	712	848
				CNX GAS COMPANY LLC	NOBLE ENERGY, INC.	ASSIGNMENT	717	1
				DOMINION TRANSMISSION, INC.	DOMINION ENERGY TRANSMISSION, INC.	MERGER/NAME CHANGE	WVSOS	
				NOBLE ENERGY, INC.	HG ENERGY II APPALACHIA, LLC	ASSIGNMENT	722	170
				DOMINION ENERGY TRANSMISSION, INC.	HG ENERGY II APPALACHIA, LLC	SECOND AMENDMENT TO MEMORANDUM OF FARMOUT AGREEMENT	723	499
				DOMINION ENERGY TRANSMISSION, INC.	HG ENERGY II APPALACHIA, LLC	THIRD AMENDMENT TO MEMORANDUM OF FARMOUT AGREEMENT	734	558
								DOMINION ENERGY TRANSMISSION, INC.
94	LC070233	04-10D-0024-0000 04-10D-0025-0000 04-10D-0025-0001 04-10D-0025-0002 04-10D-0025-0003 04-10D-0025-0004	Q100943000	STELLA CUMMINGS, WIDOW; RICHARD CUMMINGS AND HELEN J. CUMMINGS, HIS WIFE; HARRY A. NORMAN AND BILLIE R. NORMAN, HIS WIFE; MABEL CHRISTENSON AND GEORGE V. CHRISTENSON, HER HUSBAND; AND, DOROTHY V. HARRISON AND FRANK HARRISON, HER HUSBAND	CONSOLIDATED GAS SUPPLY CORPORATION	NOT LESS THAN 1/8	317	75
				CONSOLIDATED GAS SUPPLY CORPORATION	CONSOLIDATED GAS TRANSMISSION CORPORATION	ASSIGNMENT	425	127
				CONSOLIDATED GAS TRANSMISSION CORPORATION	CNG TRANSMISSION CORPORATION	MERGER/NAME CHANGE	WVSOS	
				CNG TRANSMISSION CORPORATION	DOMINION TRANSMISSION, INC.	MERGER/NAME CHANGE	WVSOS	
				DOMINION TRANSMISSION, INC.	CNX GAS COMPANY LLC	MEMORANDUM FARMOUT AGREEMENT	672	154
				CNX GAS COMPANY LLC	NOBLE ENERGY, INC.	LIMITED PARTIAL ASSIGNMENT (50%)	684	57
				DOMINION TRANSMISSION, INC.	CNX GAS COMPANY LLC AND NOBLE ENERGY, INC.	PARTIAL ASSIGNMENT (32%)	712	848
				CNX GAS COMPANY LLC	NOBLE ENERGY, INC.	ASSIGNMENT	717	1
				DOMINION TRANSMISSION, INC.	DOMINION ENERGY TRANSMISSION, INC.	MERGER/NAME CHANGE	WVSOS	
				NOBLE ENERGY, INC.	HG ENERGY II APPALACHIA, LLC	ASSIGNMENT	722	170
				DOMINION ENERGY TRANSMISSION, INC.	HG ENERGY II APPALACHIA, LLC	SECOND AMENDMENT TO MEMORANDUM OF FARMOUT AGREEMENT	723	499
				DOMINION ENERGY TRANSMISSION, INC.	HG ENERGY II APPALACHIA, LLC	THIRD AMENDMENT TO MEMORANDUM OF FARMOUT AGREEMENT	734	558
				DOMINION ENERGY TRANSMISSION, INC.	HG ENERGY II APPALACHIA, LLC	ASSIGNMENT (68%)	LEWIS 736	220





**HG Energy, LLC**  
5260 Dupont Road  
Parkersburg, WV 26101  
(304) 420-1100 - Office  
(304) 863-3172 - Fax

September 19, 2023

WV DEP  
Division of Oil & Gas  
Attn: Cragin Blevins  
601 57<sup>th</sup> Street  
Charleston, West Virginia 25304

RE: Schoen 1205 S-10H Permit Revision – (47-033-06010)  
Grant District, Harrison County  
West Virginia

Dear Mr. Blevins -

Per our discussions, enclosed are revised forms (survey plat, mylar, WW-6B and casing schematic), and a check for expedited service for the 1205 S-10H well work permit. We request the permit be modified as the casing/drilling program has been revised.

Please let me know if you have any questions or require additional information. I can be reached at (304) 420-1119 or [dwhite@hgenergyllc.com](mailto:dwhite@hgenergyllc.com).

Very truly yours,

*Diane White*

Diane C. White

Enclosures

cc: Kenneth Greynolds – WV DEP State Inspector

RECEIVED  
Office of Oil and Gas

SEP 25 2023

WV Department of  
Environmental Protection

09/29/2023