



west virginia department of environmental protection

Office of Oil and Gas
601 57th Street, S.E.
Charleston, WV 25304
(304) 926-0450
fax: (304) 926-0452

Harold D. Ward, Cabinet Secretary
www.dep.wv.gov

Monday, November 20, 2023
PERMIT MODIFICATION APPROVAL
Horizontal 6A / New Drill

HG ENERGY II APPALACHIA, LLC
5260 DUPONT ROAD

PARKERSBURG, WV 26101

Re: Permit Modification Approval for SCHOEN 1205 S-9H
47-033-06006-00-00

Revised Lateral

HG ENERGY II APPALACHIA, LLC

The Office of Oil and Gas has reviewed the attached permit modification for the above referenced permit. The attached modification has been approved and well work may begin. Please be reminded that the oil and gas inspector is to be notified twenty-four (24) hours before permitted well work is commenced.

If there are any questions, please feel free to contact me at (304) 926- 0450.

A handwritten signature in blue ink, appearing to read 'James A. Martin', is positioned above the printed name and title.

James A. Martin
Chief

Operator's Well Number: SCHOEN 1205 S-9H
Farm Name: GEORGE & ROSEANNE SCHOEN
U.S. WELL NUMBER: 47-033-06006-00-00
Horizontal 6A New Drill
Date Modification Issued: 11-20-2023

Promoting a healthy environment.

11/24/2023

STATE OF WEST VIRGINIA
DEPARTMENT OF ENVIRONMENTAL PROTECTION, OFFICE OF OIL AND GAS
WELL WORK PERMIT APPLICATION

1) Well Operator: HG Energy II Appalachia, L

<u>494519932</u>	<u>Harrison</u>	<u>Grant</u>	<u>Mount Clare 7.5'</u>
------------------	-----------------	--------------	-------------------------

Operator ID County District Quadrangle

2) Operator's Well Number: Schoen 1205 S-9H Well Pad Name: Schoen 1205

3) Farm Name/Surface Owner: George Schoen Public Road Access: McWhorter Road / SR25

4) Elevation, current ground: 1410' Elevation, proposed post-construction: 1407'

5) Well Type (a) Gas Oil _____ Underground Storage _____

Other _____

(b) If Gas Shallow Deep _____

Horizontal

6) Existing Pad: Yes or No No

7) Proposed Target Formation(s), Depth(s), Anticipated Thickness and Expected Pressure(s):
Marcellus at 7214' / 7315' and 101' in thickness. Anticipated pressure at 4314#.

8) Proposed Total Vertical Depth: 7230'

9) Formation at Total Vertical Depth: Marcellus

10) Proposed Total Measured Depth: 29,089'

11) Proposed Horizontal Leg Length: 20,997'

12) Approximate Fresh Water Strata Depths: 135', 480', 640', 728'

13) Method to Determine Fresh Water Depths: Nearest offset well data

14) Approximate Saltwater Depths: 1730, 1780, 2010

15) Approximate Coal Seam Depths: 501, 650', 730', 736' (Surface casing is being extended to cover the coal in the DTI Storage Field)

16) Approximate Depth to Possible Void (coal mine, karst, other): None

17) Does Proposed well location contain coal seams directly overlying or adjacent to an active mine? Yes _____ No

RECEIVED
Office Of Oil and Gas

OCT 24 2023

WV Department of
Environmental Protection

(a) If Yes, provide Mine Info: Name: _____
Depth: _____
Seam: _____
Owner: _____

WW-6B
(04/15)

4703306006
API NO. 47- _____
OPERATOR WELL NO. Schoen 1205 S-9H
Well Pad Name: Schoen 1205

18)

CASING AND TUBING PROGRAM

TYPE	Size (in)	New or Used	Grade	Weight per ft. (lb/ft)	FOOTAGE: For Drilling (ft)	INTERVALS: Left in Well (ft)	CEMENT: Fill-up (Cu. Ft.)/CTS
Conductor	30"	New	LS	157.5	120'	120'	Drilled In
Fresh Water/Coal	20"	NEW	J-55	94	1200'	1200'	40% excess, CTS
Intermediate 1	13 3/8"	NEW	J-55 BTC	68	2100'	2100'	40% excess, CTS
Intermediate 2	9 5/8"	NEW	J-55 BTC	40	6140'	6140'	40% excess tail, CTS
Production	5 1/2"	NEW	P-110 HP	23	29089'	29089'	20% excess tail, CTS
Tubing							
Liners							

TYPE	Size (in)	Wellbore Diameter (in)	Wall Thickness (in)	Burst Pressure (psi)	Anticipated Max. Internal Pressure (psi)	Cement Type	Cement Yield (cu. ft./k)
Conductor	30"	30"	.500				Drilled In
Fresh Water/Coal	20"	24"	.438	2110	1200	Type 1, Class A	40 % excess yield = 1.20, CTS
Intermediate 1	13 3/8"	17 1/2"	.480	3450		Type 1/Class A	Lead 40% excess, Tail 0% excess
Intermediate 2	9 5/8"	12 1/4"	.395	3950		Type 1/Class A	Lead 40% excess, Tail 0% Excess Len
Production	5 1/2"	8 1/2"	.415	16240	12500	Type 1/Class A	20% excess yield = 1.18, tail yield 1.34,
Tubing							
Liners							

PACKERS

Ky Willett
10/17/23

Kind:				
Sizes:				
Depths Set:				

RECEIVED
Office Of Oil and Gas
OCT 24 2023
WV Department of
Environmental Protection

11/24/2023

4703306006

WW-6B
(10/14)

API NO. 47- _____ - _____
OPERATOR WELL NO. Schoen 1205 S-9H
Well Pad Name: Schoen 1205

19) Describe proposed well work, including the drilling and plugging back of any pilot hole:

Drill the vertical depth to the Marcellus at an estimated total vertical depth of approximately 7230 feet. Drill horizontal leg to estimated 20,997' lateral length, 29,089' TMD. Hydraulically fracture stimulate and be capable of producing from the Marcellus Formation. Should we encounter an unanticipated void in the coal, we will install a minimum of 20' of casing below the void but not more than 100' below the void, set a basket and grout to surface. We plan to run an ACP above the Gantz/Dominion Storage interval to aid in sealing off and isolating the storage interval.

20) Describe fracturing/stimulating methods in detail, including anticipated max pressure and max rate:

The stimulation will be completed with multiple stages divided over the lateral length of the well. Stage spacing is dependent upon engineering design. Slickwater fracturing technique will be utilized on each stage using sand, water, and chemicals. See attached list. Maximum pressure not to exceed 12,500 psi.

21) Total Area to be disturbed, including roads, stockpile area, pits, etc., (acres): 29.485 acres

22) Area to be disturbed for well pad only, less access road (acres): 9.246 acres

23) Describe centralizer placement for each casing string:

No centralizers will be used with conductor casing.
Freshwater - centralized every 3 joints to surface.
Coal - Blow Spring on every joint, will also be running ACP for isolating storage zone.
Intermediate - Blow Spring on first 2 joints then every third joint to 100' from surface.
Production - Run 1 spiral centralizer every 5 joints from the top of the curve to surface. Run 1 spiral centralizer every 3 joints from the 1st 5.5' long joint to the top of the curve.

Ky Willet
10/19/23

24) Describe all cement additives associated with each cement type:

Conductor - N/A, Casing to be drilled in w/ Dual Rotary Rig.
Fresh Water - 15.8 ppg PNE-1 + 3% bwoc CaCl₂ 40% Excess Yield = 1.20, CTS
Intermediate 1 - *Lead: 15.4 ppg PNE-1 + 2.5% bwoc CaCl₂ 40% Excess / Tail: 15.9 ppg PNE-1 + 2.5% bwoc CaCl₂ 20% Excess. CTS*
Intermediate 2 - *Lead: 15.4 ppg PNE-1 + 2.5% bwoc CaCl₂ 40% Excess / Tail: 15.9 ppg PNE-1 + 2.5% bwoc CaCl₂ 20% Excess. CTS*
Production - *Lead: 14.6 ppg POZ/PNE-1 + 0.35% bwoc RD + 1% bwoc EC1 + 0.75 gal/bbl FP13L + 0.3% bwoc MPA170TAE 14.8 ppg PNE-1 + 0.35% bwoc RD + 0.75 gal/bbl FP13L + 50% bwoc ASCA1 + 0.5% bwoc MPA170TAE Excess/Lead Yield=1.19Tail Yield=1.54CTS*

25) Proposed borehole conditioning procedures:

Conductor - Ensure the hole is clean at TD.
Fresh Water - Once casing is at setting depth, circulate a minimum of one hole volume with Fresh Water prior to pumping cement.
Coal - Once casing is at setting depth, circulate and condition at TD. Circulate a minimum of one hole volume prior to pumping cement.
Intermediate - Once casing is at setting depth, circulate and condition mud at TD. Circulate a minimum of one hole volume prior to pumping cement.
Production - Choke on bottom/TD with casing, circulate at max allowable pump rate for at least 2x bottoms up, or until returns and pump pressures indicate the hole is clean. Circulate a minimum of one hole volume prior to pumping cement.

RECEIVED
Office Of Oil and Gas

OCT 24 2023

WV Department of
Environmental Protection

*Note: Attach additional sheets as needed.

11/24/2023



1205 S-9H
Marcellus Shale Horizontal
Harrison County, WV

				1205 S-9H SHL				14218446.8N 1824096.96E			
Ground Elevation		1407.3'		1205 S-9H LP				14218753.05N 1825777.24E			
Azimuth		159.381°		1205 S-9H BHL				14199117.93N 1833190.32E			
WELLBORE DIAGRAM		HOLE	CASING	GEOLOGY	TOP	BASE	MUD	CEMENT	CENTRALIZERS	CONDITIONING	COMMENTS
	30"	30" 157.5# LS	Conductor	0	120	AIR	N/A, Casing to be drilled in w/ Dual Rotary Rig	N/A	N/A	Ensure the hole is clean at TD.	Conductor casing = 0.5" wall thickness
	24"	20" 94# J-55	Fresh Water	0	135, 480, 640, 728	AIR	15.6 ppg PNE-1 + 3% bwoc CaCl 40% Excess Yield=1.20 / CTS	Centralized every 3 joints to surface	Once casing is at setting depth, circulate a minimum of one hole volume with Fresh Water prior to pumping cement.	Surface casing = 0.438" wall thickness Burst=2110 psi	
			Coal	730	736						
			Surface / FW	0	1200						
	17.5"	13-3/8" 68# J-55 BTC	Little/Big Lime	1467 / 1510	1482 / 1556	AIR / KCL Salt Polymer	Lead: 15.4 ppg PNE-1 + 2.5% bwoc CaCl 40% Excess / Tail: 15.9 ppg PNE-1 + 2.5% bwoc CaCl zero% Excess. CTS	Bow Spring on every joint <i>*will also be running ACP for isolating storage zone*</i>	Once casing is at setting depth, Circulate and condition at TD. Circulate a minimum of one hole volume prior to pumping cement.	Intermediate casing = 0.480" wall thickness Burst=3450 psi	
			Injun / Gantz (Storage)	1565 / 1900	1690 / 1970						
			Intermediate 1	0	2100						
	12.25"	9-5/8" 40# J-55 BTC	Fifty / Thirty Foot	1993 / 2112	2093 / 2147	AIR / KCL Salt Polymer	Lead: 15.4 ppg PNE-1 + 2.5% bwoc CaCl 40% Excess / Tail: 15.9 ppg PNE-1 + 2.5% bwoc CaCl zero% Excess. CTS	Bow Spring on first 2 joints then every third joint to 100' form surface	Once casing is at setting depth, Circulate and condition mud at TD. Circulate a minimum of one hole volume prior to pumping cement.	Intermediate casing = 0.395" wall thickness Burst=3950 psi	
			Gordon Stray / Gordon	2195 / 2250	2250 / 2310						
			5th Sand / Warren	2440 / 2835	2468 / 2860						
			Speechley / Benson	3028 / 4420	3162 / 4455						
	12.25"		Intermediate 2	0	MD:6140 TVD:5920 INC:22.5	9.0ppg SOBOM	<u>Lead:</u> 14.5 ppg POZ:PNE-1 + 0.3% bwoc R3 + 1% bwoc EC1 + 0.75 gal/sk FP13L + 0.3% bwoc MPA170 <u>Tail:</u> 14.8 ppg PNE-1 + 0.35% bwoc R3 + 0.75 gal/sk FP13L + 50% bwoc ASCA1 + 0.5% bwoc MPA170 20% Excess Lead Yield=1.19 Tail Yield=1.94 CTS	Run 1 spiral centralizer every 5 joints from the top of the curve to surface.	Once on bottom/TD with casing, circulate at max allowable pump rate for at least 2x bottoms up, or until returns and pump pressures indicate the hole is clean. Circulate a minimum of one hole volume prior to pumping cement.	Production casing = 0.415" wall thickness Burst=16240 psi Note:Actual centralizer schedules may be changed due to hole conditions	
			Rhinestreet	6364	6549						
	8.5" Curve	5-1/2" 23# P-110 HP CDC HTQ	Cashaqua	6549	6740	11.5ppg-12.5ppg SOBOM		Run 1 spiral centralizer every 3 joints from the 1st 5.5" long joint to the top of the curve.			
			Middlesex	6740	6870						
West River			6870	7003							
Burkett			7003	7048							
Tully Limestone			7048	7149							
8.5" Lateral		Hamilton	7149	7214	11.5ppg-12.5ppg SOBOM						
		Marcellus	7214	7315							
		TMD / TVD (Production)	29089	7230							
		Onondaga	7315								

LP @ 7230' TVD / 8093' MD

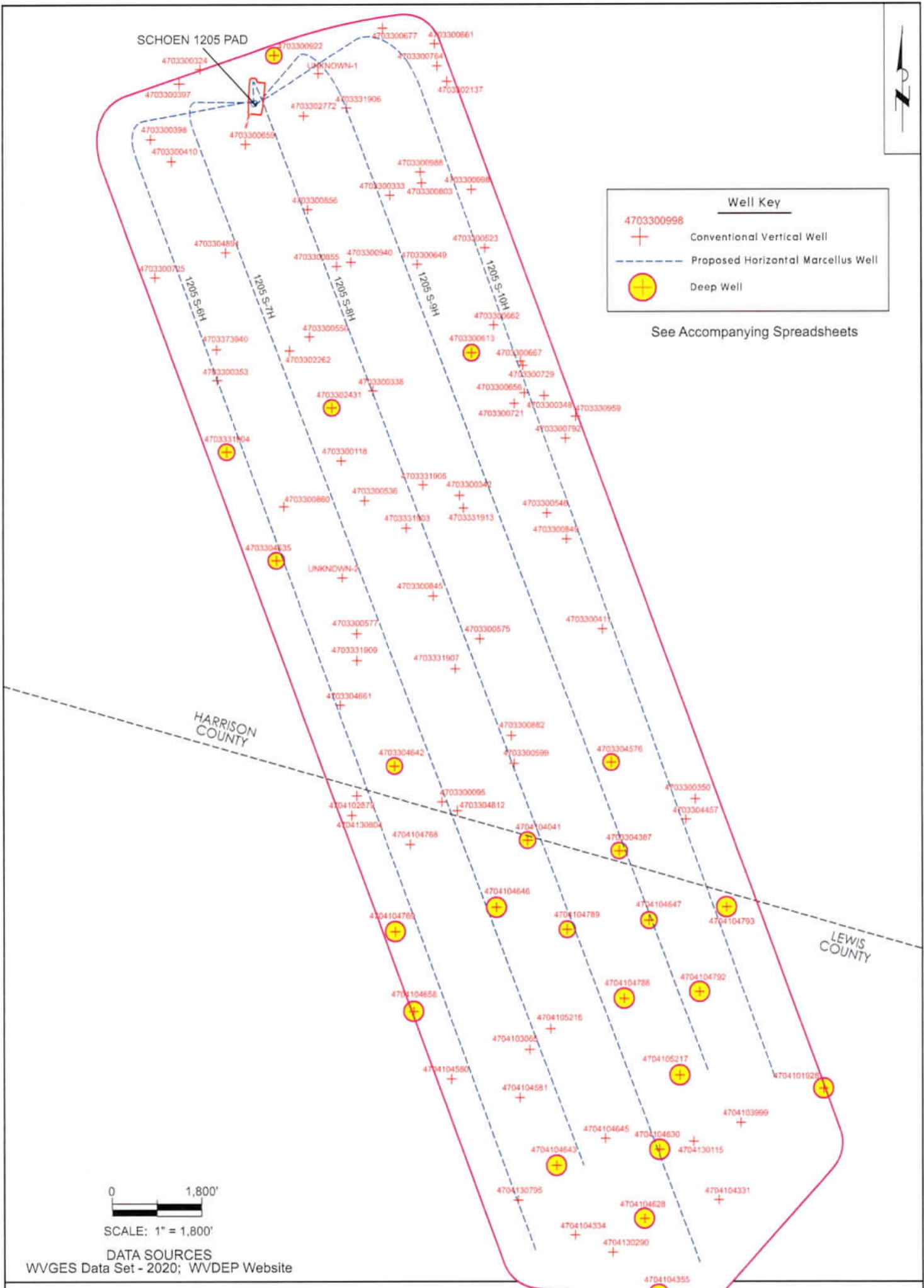
8.5" Hole - Cemented Long String
5-1/2" 23# P-110 HP CDC HTQ

+/-20996' ft Lateral

TD @ +/-7230' TVD
+/-29089' MD

X=centralizers

4703306006



Area of Review for:

SCHOEN 1205 SOUTH UNIT

Proposed 1205 S-6H Proposed 1205 S-7H Proposed 1205 S-8H
Proposed 1205 S-9H Proposed 1205 S-10H

Grant District, Harrison County, W.Va. &
Hacker's Creek District, Lewis County, W.Va.

11/24/2023

HG ENERGY, II APPALACHIA, LLC
5260 DuPont Road, Parkersburg, WV 26101



9/26/2023

**EXISTING WELLS LOCATED WITHIN THE AREA OF REVIEW FOR:
SCHOEN 1205 SOUTH UNIT AND PROPOSED WELLS S-6H, S-7H, S-8H, S-9H & S-10H**

CT	API	COUNTY	FARM	OPERATOR NAME	FORMATION NAME	WELL TYPE	TVD	STATUS	LATITUDE	LONGITUDE
1	4703300095	Harrison	A B Jackson 1	Eastern Gas Transmission & Storage, Inc.	Fifth	Storage	2219	ACTIVE	39.113482	-80.340584
2	4703300118	Harrison	O F Allman 1	Eastern Gas Transmission & Storage, Inc.	Gantz	Storage	1679	ACTIVE	39.131942	-80.346144
3	4703300324	Harrison	John H Hardway 1	Eastern Gas Transmission & Storage, Inc.	Gantz	Storage	1644	ACTIVE	39.153472	-80.355885
4	4703300333	Harrison	James M Waggoner	UNKNOWN	Hampshire Grp	Gas	2165	PLUGGED	39.146495	-80.342517
5	4703300338	Harrison	F S Young	Eastern Gas Transmission & Storage, Inc.	Gantz	Storage	1700	ACTIVE	39.135769	-80.343869
6	4703300342	Harrison	Asa Boyce	UNKNOWN	Fifth	Gas	2269	PLUGGED	39.129986	-80.337801
7	4703300348	Harrison	Sarah F Vincent	UNKNOWN	Hampshire Grp	Gas	2054	PLUGGED	39.135437	-80.331733
8	4703300350	Harrison	Viola Mount	Eastern Gas Transmission & Storage, Inc.	Greenland Gap Fm	Gas	4370	PLUGGED	39.113273	-80.321297
9	4703300353	Harrison	G M Curry et al	Eastern Gas Transmission & Storage, Inc.	Gordon (undiff)	Storage	2047	ACTIVE	39.136407	-80.354852
10	4703300397	Harrison	Marcella R Bond	Hope Natural Gas Company	Up Devonian	Gas	1587	PLUGGED	39.152681	-80.357369
11	4703300398	Harrison	J N Rector	UNKNOWN	Thirty-foot	Storage	2002	PLUGGED	39.149633	-80.359418
12	4703300410	Harrison	E A Waggoner	Eastern Gas Transmission & Storage, Inc.	Hampshire Grp	Storage	1964	ACTIVE	39.148438	-80.357974
13	4703300411	Harrison	W N Dawson CW513	Eastern Gas Transmission & Storage, Inc.	Hampshire Grp	Storage	1920	ACTIVE	39.122627	-80.327748
14	4703300523	Harrison	Lewis C Swisher	Eastern Gas Transmission & Storage, Inc.	Gantz	Storage	1723	ACTIVE	39.143557	-80.335826
15	4703300536	Harrison	M M F Randolph	Eastern Gas Transmission & Storage, Inc.	Benson	Gas	4410	ACTIVE	39.129739	-80.344514
16	4703300546	Harrison	M M F Randolph	Eastern Gas Transmission & Storage, Inc.	Benson	Gas	4260	ACTIVE	39.128982	-80.331615
17	4703300550	Harrison	Lloyd D Swisher	Eastern Gas Transmission & Storage, Inc.	Benson	Dry w/ Gas Show	4320	PLUGGED	39.138747	-80.348299
18	4703300575	Harrison	Sidney Haymond	Eastern Gas Transmission & Storage, Inc.	Benson	Gas	4350	ACTIVE	39.122265	-80.336369
19	4703300577	Harrison	Sidney Cookman	Eastern Gas Transmission & Storage, Inc.	Benson	Gas	4356	ACTIVE	39.122467	-80.345146
20	4703300599	Harrison	Amanda E Smith	Eastern Gas Transmission & Storage, Inc.	Bayard	Gas	2512	ACTIVE	39.115515	-80.334818
21	4703300613	Harrison	Lewis C Swisher	Eastern Gas Transmission & Storage, Inc.	Benson	Gas	4457	ACTIVE	39.137811	-80.336839
22	4703300649	Harrison	G W Swisher	Eastern Gas Transmission & Storage, Inc.	Greenland Gap Fm	Storage	2347	ACTIVE	39.142725	-80.340651
23	4703300656	Harrison	F S Young CW520	Eastern Gas Transmission & Storage, Inc.	Greenland Gap Fm	Storage	1894	PLUGGED	39.135593	-80.333125
24	4703300659	Harrison	S V Curry CW433	Eastern Gas Transmission & Storage, Inc.	Thirty-foot	Storage	1990	ACTIVE	39.149343	-80.352710
25	4703300661	Harrison	M S Davis	Eastern Gas Transmission & Storage, Inc.	Fifty-foot	Storage	1885	ACTIVE	39.154774	-80.339265
26	4703300662	Harrison	L C Swisher CW527	Eastern Gas Transmission & Storage, Inc.	Fifty-foot	Storage	1759	ACTIVE	39.139321	-80.335262
27	4703300667	Harrison	G W Swisher CW525	Eastern Gas Transmission & Storage, Inc.	Hampshire Grp	Storage	1687	PLUGGED	39.137325	-80.333373
28	4703300677	Harrison	D L Nutter	Alliance Petroleum Co. LLC	Thirty-foot	Gas	1850	ABANDONED	39.155655	-80.342933
29	4703300721	Harrison	Harris Hrs CW521	Eastern Gas Transmission & Storage, Inc.	Fifty-foot	Storage	1948	PLUGGED	39.135023	-80.333850
30	4703300725	Harrison	W E Ware	Eastern Gas Transmission & Storage, Inc.	Fifty-foot	Storage	1985	ACTIVE	39.142666	-80.360350
31	4703300729	Harrison	F Wiant CW522	Eastern Gas Transmission & Storage, Inc.	Fifty-foot	Storage	1864	PLUGGED	39.137099	-80.333220
32	4703300764	Harrison	M S Davis CW533	Eastern Gas Transmission & Storage, Inc.	Thirty-foot	Storage	2028	PLUGGED	39.153552	-80.339108
33	4703300792	Harrison	L Snyder CW518	Eastern Gas Transmission & Storage, Inc.	Fifty-foot	Storage	1824	PLUGGED	39.133088	-80.330236
34	4703300803	Harrison	O Fallman CW430	Eastern Gas Transmission & Storage, Inc.	Thirty-foot	Storage	2125	PLUGGED	39.147150	-80.340268

4703306006

35	4703300845	Harrison	S Haymond CW514	Eastern Gas Transmission & Storage, Inc.	Thirty-foot	Storage	2175	ACTIVE	39.124501	-80.339721
36	4703300849	Harrison	M M F Randolph CW573	Eastern Gas Transmission & Storage, Inc.	Thirty-foot	Storage	2000	ACTIVE	39.127556	-80.330228
37	4703300855	Harrison	Susan V Curry	Eastern Gas Transmission & Storage, Inc.	Thirty-foot	Storage	1877	ACTIVE	39.142614	-80.346345
38	4703300856	Harrison	Susan V Curry CW472	Eastern Gas Transmission & Storage, Inc.	Thirty-foot	Storage	1950	ACTIVE	39.145753	-80.348358
39	4703300860	Harrison	Burgett Swisher CW470	Eastern Gas Transmission & Storage, Inc.	Fifty-foot	Storage	1925	ACTIVE	39.129447	-80.350236
40	4703300882	Harrison	Patricia B Smith	Eastern Gas Transmission & Storage, Inc.	Fifty-foot	Storage	1965	ACTIVE	39.116823	-80.334272
41	4703300922	Harrison	A B Yost	Eastern Gas Transmission & Storage, Inc.	Benson	Gas	4455	ACTIVE	39.154204	-80.350633
42	4703300940	Harrison	Susan Curry	Eastern Gas Transmission & Storage, Inc.	Benson	Gas	4256	ACTIVE	39.142820	-80.345334
43	4703300988	Harrison	Levi B Davis CW431	Eastern Gas Transmission & Storage, Inc.	Fifth	Storage	2137	ACTIVE	39.147749	-80.340351
44	4703300998	Harrison	S G Kennedy CW531	Eastern Gas Transmission & Storage, Inc.	Thirty-foot	Storage	1910	ACTIVE	39.146770	-80.336744
45	4703302137	Harrison	M S Davis	Eastern Gas Transmission & Storage, Inc.	Benson	Gas	4478	ACTIVE	39.152701	-80.338421
46	4703302262	Harrison	Lloyd D. Swisher	Eastern Gas Transmission & Storage, Inc.	UNKNOWN	Storage	-	ACTIVE	39.137999	-80.349742
47	4703302431	Harrison	J & F Allman	Eastern Gas Transmission & Storage, Inc.	Benson	Gas	4664	ACTIVE	39.134863	-80.346773
48	4703302772	Harrison	J H & C Gerlach	Greylock Conventional, LLC	Benson	Gas	4427	ACTIVE	39.150855	-80.348565
49	4703304387	Harrison	Thomas C Kennedy	Eastern Gas Transmission & Storage, Inc.	Greenland Gap Fm	Gas	4577	ACTIVE	39.110737	-80.327029
50	4703304457	Harrison	Wayne R Lewis	Eastern Gas Transmission & Storage, Inc.	Greenland Gap Fm	Gas	4420	ACTIVE	39.112332	-80.32219
51	4703304576	Harrison	Patricia B/Virginia L Smith	Eastern Gas Transmission & Storage, Inc.	Benson	Gas	4632	ACTIVE	39.115522	-80.327403
52	4703304635	Harrison	Charles R/F Sutton	Eastern Gas Transmission & Storage, Inc.	Greenland Gap Fm	Gas	4660	ACTIVE	39.1265141	-80.3507881
53	4703304642	Harrison	Myrtle B Arobogast	Eastern Gas Transmission & Storage, Inc.	Greenland Gap Fm	Gas	4453	ACTIVE	39.115232	-80.342637
54	4703304661	Harrison	Gloria M Coward	Eastern Gas Transmission & Storage, Inc.	Benson	Gas	4350	ACTIVE	39.118568	-80.346361
55	4703304812	Harrison	Catherine Mauro	Eastern Gas Transmission & Storage, Inc.	Greenland Gap Fm	Gas	4302	ACTIVE	39.112912	-80.338169
56	4703304891	Harrison	Joseph C Queen	Eastern Gas Transmission & Storage, Inc.	not available	not available	-	PLUGGED	39.143411	-80.354188
57	4703330959	Harrison	Aubrey Randolph	Hope Natural Gas Company	Hampshire Grp	Gas	2067	PLUGGED	39.134275	-80.329503
58	4703331903	Harrison	M M F Randolph	Eastern Gas Transmission & Storage, Inc.	Greenland Gap Fm	Storage	2164	ACTIVE	39.128236	-80.341573
59	4703331904	Harrison	B Swisher CW420	Eastern Gas Transmission & Storage, Inc.	Greenland Gap Fm	Gas	4625	PLUGGED	39.132479	-80.354236
60	4703331905	Harrison	M F Randolph CW422	Eastern Gas Transmission & Storage, Inc.	UNKNOWN	Storage	2182	UNKNOWN	39.130586	-80.340370
61	4703331906	Harrison	F S Young	Eastern Gas Transmission & Storage, Inc.	Gantz	Storage	1910	ACTIVE	39.151283	-80.345552
62	4703331907	Harrison	S Haymond	Consolidated Gas Supply Corp.	Greenland Gap Fm	Storage	2200	PLUGGED	39.120487	-80.338192
63	4703331909	Harrison	S Cookman	Consolidated Gas Supply Corp.	not available	not available	-	PLUGGED	39.121175	-80.345234
64	4703331913	Harrison	M M F Randolph	Eastern Gas Transmission & Storage, Inc.	UNKNOWN	not available	2345	PLUGGED	39.129301	-80.337525
65	4703373940	Harrison	Lloyd D Swisher 1656	UNKNOWN	UNKNOWN	not available	2036	UNKNOWN	39.138091	-80.354883
66	4704101928	Lewis	Stella Cummings	Eastern Gas Transmission & Storage, Inc.	Benson	Gas	4463	PLUGGED	39.097336	-80.312407
67	4704102879	Lewis	A S Holbert	Eastern Gas Transmission & Storage, Inc.	UNKNOWN	Storage	2326	ACTIVE	39.113587	-80.345250
68	4704103065	Lewis	George Cummings	UNKNOWN	UNKNOWN	not available	-	ABANDONED	39.099587	-80.333173
69	4704103999	Lewis	Eleanor Tenney et al	Petroleum Development Corp.	UNKNOWN	not available	-	PLUGGED	39.09551	-80.318274
70	4704104041	Lewis	Thomas C Kennedy	Eastern Gas Transmission & Storage, Inc.	Greenland Gap Fm	Gas	4465	ACTIVE	39.111027	-80.33333
71	4704104331	Lewis	Harold Linger	Eastern Gas Transmission & Storage, Inc.	Greenland Gap Fm	Gas	2667	ACTIVE	39.091290	-80.319884

4703306006

72	4704104334	Lewis	Samuel Morrison et al	Eastern Gas Transmission & Storage, Inc.	Greenland Gap Fm	Gas	2541	ACTIVE	39.089420	-80.330060
73	4704104355	Lewis	Gary Taylor	Diversified Production LLC	Greenland Gap Fm	Gas	5160	ACTIVE	39.086092	-80.324192
74	4704104580	Lewis	Timothy D Waugh	Eastern Gas Transmission & Storage, Inc.	Greenland Gap Fm	Gas	4431	ACTIVE	39.098009	-80.338724
75	4704104581	Lewis	Gordon W Moore	Eastern Gas Transmission & Storage, Inc.	Greenland Gap Fm	Gas	4366	ACTIVE	39.09696	-80.333888
76	4704104628	Lewis	George W Dawson	Eastern Gas Transmission & Storage, Inc.	Misc Sands-BNSN/BRLR	Gas	4459	ACTIVE	39.090289	-80.325157
77	4704104630	Lewis	Harold Linger	Eastern Gas Transmission & Storage, Inc.	Misc Sands-BNSN/BRLR	Gas	4673	ACTIVE	39.09406	-80.324042
78	4704104643	Lewis	Gordon W Moore	Eastern Gas Transmission & Storage, Inc.	Misc Sands-BNSN/BRLR	Gas	4641	ACTIVE	39.093236	-80.331338
79	4704104645	Lewis	Gordon W Moore	Eastern Gas Transmission & Storage, Inc.	Greenland Gap Fm	Gas	2742	ACTIVE	39.094694	-80.327878
80	4704104646	Lewis	Thomas C Kennedy	Eastern Gas Transmission & Storage, Inc.	Misc Sands-BNSN/BRLR	Gas	4643	ACTIVE	39.107390	-80.335430
81	4704104647	Lewis	Thomas C Kennedy	Eastern Gas Transmission & Storage, Inc.	Greenland Gap Fm	Gas	4649	ACTIVE	39.106966	-80.324793
82	4704104658	Lewis	Howard A Mearns	Eastern Gas Transmission & Storage, Inc.	Greenland Gap Fm	Gas	4470	ACTIVE	39.101738	-80.341353
83	4704104768	Lewis	Thomas C Kennedy	Eastern Gas Transmission & Storage, Inc.	Misc Sands-BNSN/BRLR	Gas	4320	ACTIVE	39.110890	-80.341502
84	4704104769	Lewis	Myrtle B Arbogast	Eastern Gas Transmission & Storage, Inc.	Misc Sands-BNSN/BRLR	Gas	4456	ACTIVE	39.106117	-80.342608
85	4704104788	Lewis	Thomas C Kennedy et al	Eastern Gas Transmission & Storage, Inc.	Greenland Gap Fm	Gas	4635	ACTIVE	39.102365	-80.326446
86	4704104789	Lewis	Thomas C Kennedy etal	Eastern Gas Transmission & Storage, Inc.	Misc Sands-BNSN/BRLR	Gas	4452	ACTIVE	39.106241	-80.330563
87	4704104792	Lewis	Dorothy J Randolph	Eastern Gas Transmission & Storage, Inc.	Greenland Gap Fm	Gas	4749	ACTIVE	39.102702	-80.321113
88	4704104793	Lewis	Frank E Lewis/N Jackson	Eastern Gas Transmission & Storage, Inc.	Greenland Gap Fm	Gas	4707	ACTIVE	39.107306	-80.319155
89	4704105216	Lewis	George Wesley Dawson	Eastern Gas Transmission & Storage, Inc.	Greenland Gap Fm	Gas	4428	ACTIVE	39.100731	-80.331676
90	4704105217	Lewis	George Wesley Dawson	Eastern Gas Transmission & Storage, Inc.	Greenland Gap Fm	Gas	4686	ACTIVE	39.09812	-80.322556
91	4704130115	Lewis	M E Cookman	Hope Natural Gas Company	Hampshire Grp	Gas	2614	PLUGGED	39.094495	-80.321623
92	4704130290	Lewis	Claudia Blake	Standard Gas Co.	Hampshire Grp	Gas	2450	PLUGGED	39.08845	-80.327404
93	4704130795	Lewis	Geo M Post	Consolidated Gas Supply Corp.	Hampshire Grp	Gas	2446	PLUGGED	39.09135	-80.334074
94	4704130804	Lewis	H J Melton	Consolidated Gas Supply Corp.	Hampshire Grp	not available	2326	PLUGGED	39.112522	-80.345615
95	UNKNOWN 1	Harrison	J.J. Lewis ??	UNKNOWN	UNKNOWN	not available	-	PLUGGED	39.153186	-80.347510
96	UNKNOWN 2	Harrison	Sydney Cookman ??	UNKNOWN	UNKNOWN	not available	-	ABANDONED	39.125542	-80.346132

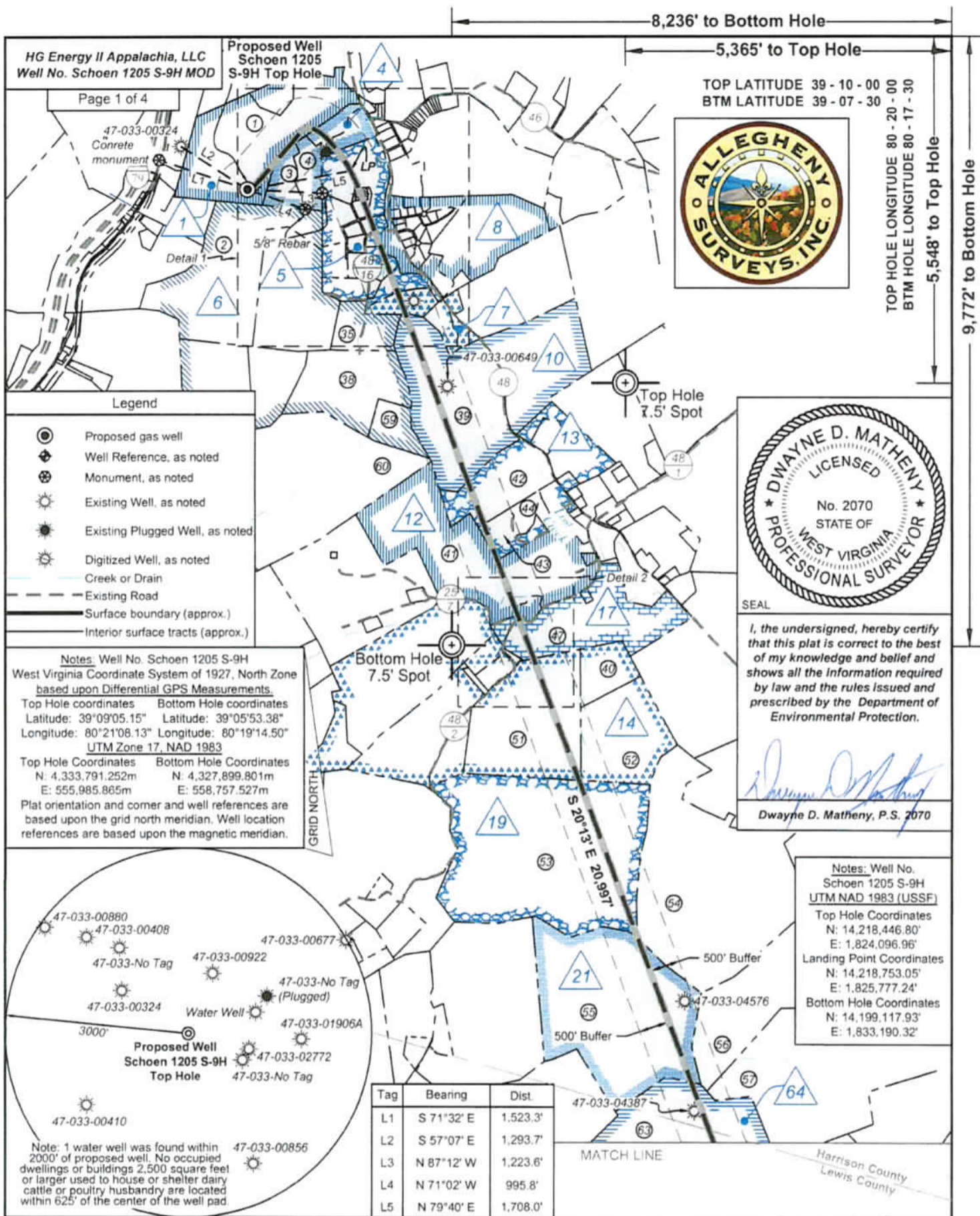
YELLOW DENOTES WELL WITH TVD > 4,450'

GREEN DENOTES SURVEYED WELLS

SOURCE: WVGES DATASET (2020) and WVDEP WEBSITE AND FIELD SURVEYS

UPDATED 9/26/2023

4703506006



FILE NO: 32-36-G-19
DRAWING NO: Schoen 1205 S-9H Well Plat
SCALE: 1" = 2000'
MINIMUM DEGREE OF ACCURACY: Submeter
PROVEN SOURCE OF ELEVATION: CORS, Bridgeport, WV

STATE OF WEST VIRGINIA
DEPARTMENT OF ENVIRONMENTAL PROTECTION
OIL AND GAS DIVISION

DATE: April 26 2023
OPERATOR'S WELL NO. Schoen 1205 S-9H
API WELL NO
47 - 033 - 06006
STATE COUNTY PERMIT

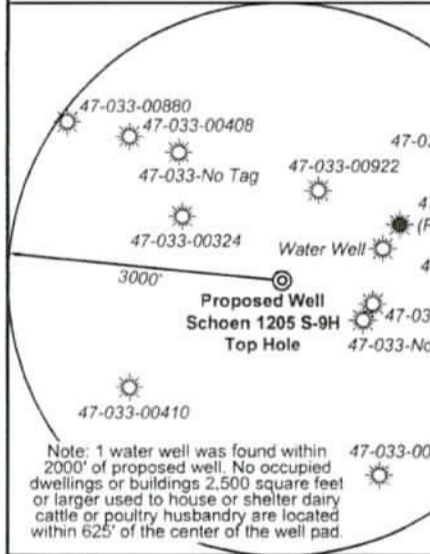
WELL TYPE: OIL GAS LIQUID INJECTION WASTE DISPOSAL
(IF GAS) PRODUCTION: STORAGE DEEP SHALLOW

LOCATION: ELEVATION: 1,407.3' WATERSHED: Middle West Fork Creek
DISTRICT: Grant / Hackers Creek
SURFACE OWNER: George & Rosanne Schoen
ROYALTY OWNER: Willa Post Robey, et al LEASE NO: _____ ACREAGE: 78.20

PROPOSED WORK: DRILL CONVERT DRILL DEEPER FRACTURE OR STIMULATE PLUG OFF OLD FORMATION
 PERFORATE NEW FORMATION OTHER PHYSICAL CHANGE IN WELL (SPECIFY) BH-MOD 7.230' TVD
 PLUG AND ABANDON CLEAN OUT AND REPLUG TARGET FORMATION: Marcellus Shale ESTIMATED DEPTH: 29,089' MD

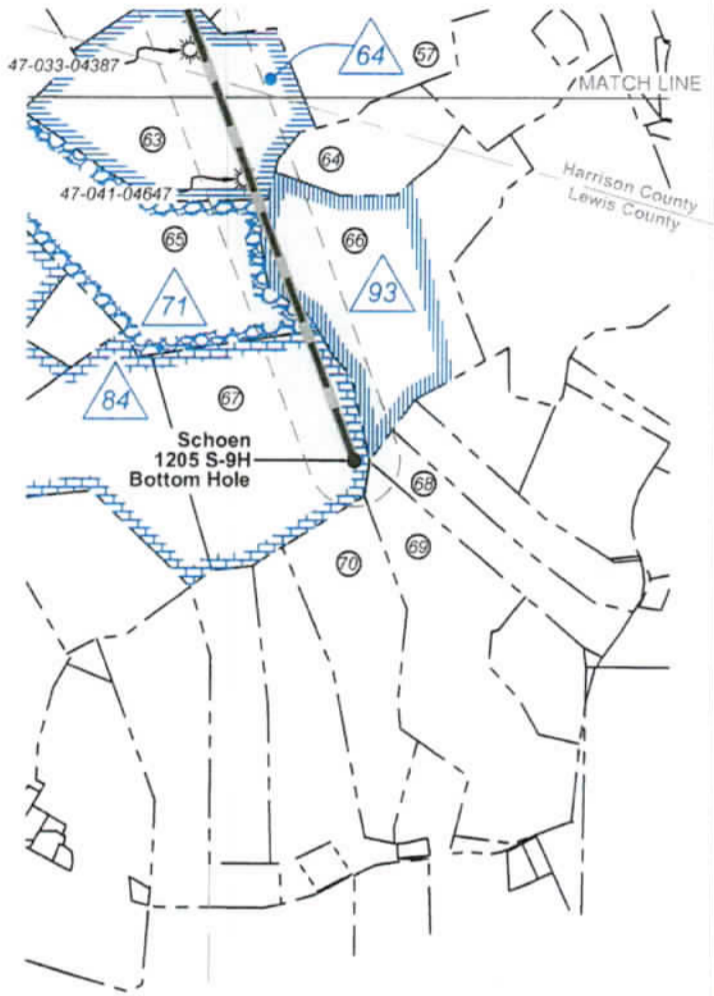
WELL OPERATOR: HG Energy II Appalachia, LLC
ADDRESS: 5260 Dupont Road Parkersburg, WV 26101

DESIGNATED AGENT: Diane C. White
ADDRESS: 5260 Dupont Road Parkersburg, WV 26101

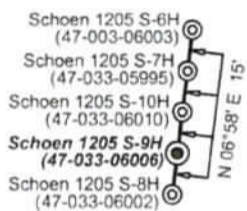


Tag	Bearing	Dist.
L1	S 71°32' E	1,523.3'
L2	S 57°07' E	1,293.7'
L3	N 87°12' W	1,223.6'
L4	N 71°02' W	995.8'
L5	N 79°40' E	1,708.0'

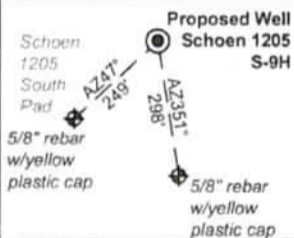
Notes: Well No. Schoen 1205 S-9H
UTM NAD 1983 (USSF)
Top Hole Coordinates N: 14,218,446.80' E: 1,824,096.96'
Landing Point Coordinates N: 14,218,753.05' E: 1,825,777.24'
Bottom Hole Coordinates N: 14,199,117.93' E: 1,833,190.32'



Wellhead Layout (NTS)



**Well Location References
Not to Scale**



ID	Lease
1	A.B. Post, et al
4	John H. & Charlotte C. Gerlach
5	French S. & Anna J. Young
6	Susan V. Curry, et al
7	Mary Alkire, et al
8	L.B. & S.J. Davis
10	Lewis C. & Alma Swisher
12	French S. & Anna J. Young
13	Lewis C. & Alma Swisher
14	M.M.F. & S.F. Randoiph
17	Mary Holbert Ellyson, et vir, et al
19	Sidney & Virginia Haymond
21	Patncia B. Smith, et al
64	Melvina E. Cookman
71	Allie B. & M.E. Jackson, et al
84	George & Ella Cummings
93	Eugenia F. Mills, et vir

FILE NO: 32-36-G-19
DRAWING NO: Schoen 1205 S-9H Well Plat
SCALE: 1" = 2000'
MINIMUM DEGREE OF ACCURACY:
Submeter
PROVEN SOURCE OF ELEVATION:
CORS, Bridgeport, WV

STATE OF WEST VIRGINIA
DEPARTMENT OF ENVIRONMENTAL PROTECTION
OIL AND GAS DIVISION

DATE: April 26 2023
OPERATOR'S WELL NO. Schoen 1205 S-9H
API WELL NO
47 - 033 - 06006
STATE COUNTY PERMIT

WELL TYPE: OIL GAS LIQUID INJECTION WASTE DISPOSAL
(IF GAS) PRODUCTION: STORAGE DEEP SHALLOW

LOCATION: ELEVATION: 1,407.3' WATERSHED: Middle West Fork Creek
DISTRICT: Grant / Hackers Creek

Top: Mount Clare
QUADRANGLE: Btm: Berlin
COUNTY: Harrison / Lewis

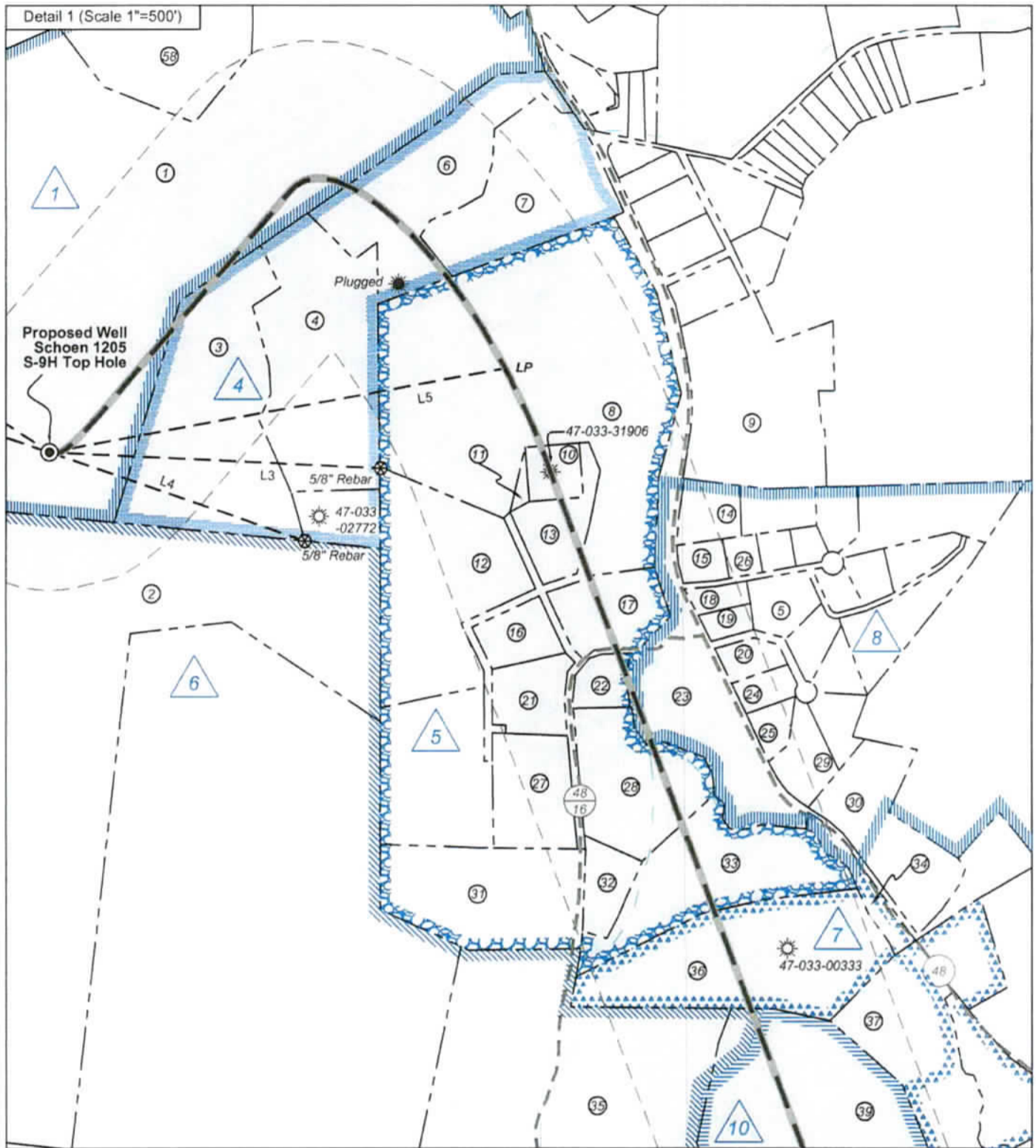
SURFACE OWNER: George & Rosanne Schoen
ROYALTY OWNER: Willa Post Robey, et al

LEASE NO: _____ ACREAGE: 78.20

PROPOSED WORK: DRILL CONVERT DRILL DEEPER FRACTURE OR STIMULATE PLUG OFF OLD FORMATION
 PERFORATE NEW FORMATION OTHER PHYSICAL CHANGE IN WELL (SPECIFY) BH-MOD
 PLUG AND ABANDON CLEAN OUT AND REPLUG TARGET FORMATION: Marcellus Shale ESTIMATED DEPTH: 29,089' MD

ACREAGE: 65.06
11/24/2023

WELL OPERATOR: HG Energy II Appalachia, LLC DESIGNATED AGENT: Diane C. White
ADDRESS: 5260 Dupont Road ADDRESS: 5260 Dupont Road
Parkersburg, WV 26101 Parkersburg, WV 26101



FILE NO: 32-36-G-19
DRAWING NO: Schoen 1205 S-9H Well Plat
SCALE: 1" = 2000'
MINIMUM DEGREE OF ACCURACY:
Submeter
PROVEN SOURCE OF ELEVATION:
CORS, Bridgeport, WV

STATE OF WEST VIRGINIA
DEPARTMENT OF ENVIRONMENTAL PROTECTION
OIL AND GAS DIVISION

DATE: April 26 2023
OPERATOR'S WELL NO. Schoen 1205 S-9H
API WELL NO
47 - 033 - 06006
STATE COUNTY PERMIT

WELL TYPE: OIL GAS LIQUID INJECTION WASTE DISPOSAL
(IF GAS) PRODUCTION: STORAGE DEEP SHALLOW

LOCATION: ELEVATION: 1,407.3' WATERSHED: Middle West Fork Creek
DISTRICT: Grant / Hackers Creek

Top: Mount Clare
QUADRANGLE: Btm: Berlin
COUNTY: Harrison / Lewis

SURFACE OWNER: George & Rosanne Schoen
ROYALTY OWNER: Willa Post Robey, et al

LEASE NO: _____ ACREAGE: 78.20

PROPOSED WORK: DRILL CONVERT DRILL DEEPER FRACTURE OR STIMULATE PLUG OFF OLD FORMATION
 PERFORATE NEW FORMATION OTHER PHYSICAL CHANGE IN WELL (SPECIFY) BH-MOD
 PLUG AND ABANDON CLEAN OUT AND REPLUG TARGET FORMATION: Marcellus Shale ESTIMATED DEPTH: 29,089' MD

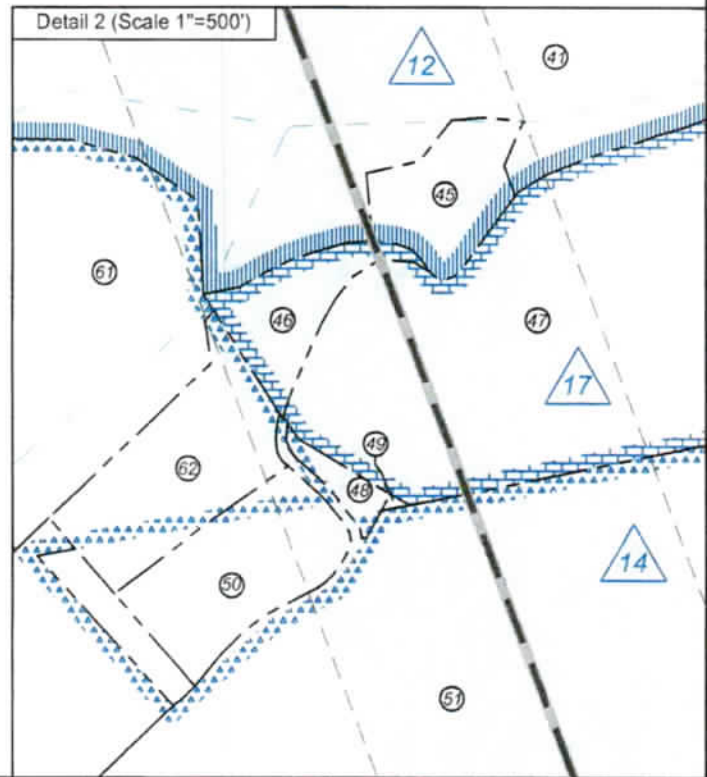
WELL OPERATOR: HG Energy II Appalachia, LLC
ADDRESS: 5260 Dupont Road
Parkersburg, WV 26101

DESIGNATED AGENT: Diane C. White
ADDRESS: 5260 Dupont Road
Parkersburg, WV 26101

11/24/2023



Harrison County				
No.	TM / Par	Owner	Bk / Pg	Ac.
1	447 / 2	George & Rosanne Schoen	1148 / 1059	65.00
2	446 / 29	Thomas K. Young, et al	1121 / 25	75.00
3	447 / 3	George and Rosanne Schoen	1253 / 302	10.06
4	447 / 3.4	Stephen M & Kimberly Goff	1257/189	7.67
5	447 / 5.10	Raymond D. & Karen D. Irvin	1393/477	1.09
6	447 / 3.3	Charlotte C. Gerlach	1070/1041	6.10
7	447 / 3.2	Michael Tillman & Mary Hencke	1257/193	5.88
8	447 / 4.11	Joseph & Karen Bowers	1295/887	21.87
9	447 / 6.1	Michael & Charlotte Moses	1364/7	7.20
10	447 / 4.10	John Breen LACO	1512/1161	0.92
11	447 / 4.12	John Breen LACO	1512/1161	0.17
12	447 / 4.1	H. Keith & Diana L. Bramel	1438/63	7.46
13	447 / 4.7	John Breen	1512/1161	2.20
14	447 / 5.25	Kenneth & Twyla Snoops	1440/70	1.09
15	447 / 5.12	Jeffrey & Diana Rogers	1553/872	0.57
16	447 / 4.8	Joseph C. Queen	1231/172	1.18
17	447 / 4.4	Danny Lee Hess	1264/1228	3.00
18	447 / 5.18	James D. & Joanie L. Oliverio	1542/1102	0.40
19	447 / 5.1	Shen L. Smith	1537/668	0.42
20	447 / 5.14	Joshua S. Runyon	1498/615	0.64
21	447 / 4.3	Grzechowski T. & Jerusha A. Adler	1473/697	1.69
22	447 / 4.6	Melinda J. & Michael R. Bush	1294/171	0.85
23	447 / 5.3	Town of Lost Creek	G 63/401	2.50
24	447 / 5.19	Delani & Linda Coffman	1325/840	0.63
25	447 / 5.13	Delano & Linda Coffman	1359/713	0.56
26	447 / 5.9	Ronald J. Reed	1308/925	0.41
27	447 / 4.5	Eric A. Davis, et al	1598/531	2.85
28	447 / 4.9	Melinda Bush	1569/158	4.20
29	447 / 5.7	Jennifer Donnellan	1438/453	1.19
30	447 / 26.1	Russell A. Snyder	1425/1332	2.01
31	447 / 21	Richard & Rebecca Sprout	1600/849	6.09
32	447 / 4.2	Gail & Howard Marsh	1410/1058	1.04
33	447 / 4	Gene & Carol Kennedy	1101/303	5.83
34	447 / 23.3	Russell A. Snyder	1585/356	0.72
35	447 / 22	Daniel & Stacie Cooley	1310/1072	16.59
36	447 / 23.2	Donna Greaver	1585/708	8.35
37	447 / 24	Franklin Jr. & Elizabeth Wheeler	1585/108	5.26
38	447 / 34	Sharon K. & Patsy J. Salate	1360/84	43.00
39	447 / 36	Debra J. Bedell	1291/931	82.38
40	467 / 36	Gary W. & Kathy Hanby	1107/1041	15.35
41	467 / 2	Jackson L. Smith	1378 / 976	95.16
42	447 / 44.1	Debra J. Bedell	1291/931	30.37
43	447 / 44	Roddy & Tracy L. Ash	1332/493	15.21
44	447 / 44.4	Michael W. & Tracy L. Ash	1359/139	4.79
45	467 / 2.2	Ronald J. Singer	1395 / 600	2.65
46	467 / 31	Eugene Hanby	1237 / 23	2.50
47	467 / 20	Steven G. & Juila A. Randolph	1321 / 1151	54.64
48	467 / 32	Clara Ellen Wertz	--- / ---	0.58
49	467 / 32.1	Joseph M. Richards	1439 / 1234	0.04
50	467 / 32.3	Joseph M. Richards	1485 / 706	4.15
51	467 / 36	Joseph M. Richards	1439 / 1234	73.93
52	467 / 36.1	Gary W. & Kathy Hanby	1153 / 965	45.00
53	467 / 52	David L. & Lisle C. Hinkle	1282 / 389	175.50
54	467 / 53	George W Dawson, et ux	1418 / 331	158.55
55	487 / 5	Kimberly & Terri Glaze Wriston	W 83 / 97	129.62
56	487 / 6	Clayton W. Rice	1563 / 252	70.33
57	487 / 8	Wayne R. Lewis	1616 / 1241	134.68
58	447 / 1	Dale H. Jordan	1437 / 672	6.70
59	447 / 35	Kenneth Maxwell, et al	1311 / 423	11.67
60	447 / 43	Isaac & Betty Maxwell	1543 / 141	123.95
61	467 / 30	William L. Randolph, et ux	1518 / 19	73.73
62	467 / 33.1	Eugene W. Hanby	1428 / 1	4.76
Lewis County				
63	10C / 16	Thomas C. Kennedy Testamentary Trust	W34 / 428	105.00
64	10C / 17	Morman Jackson	584 / 191	34.00
65	10C / 15	Thomas C. Kennedy Testamentary Trust	W34 / 428	107.00
66	10C / 18	Shannon M. & Matthew C. Arnett	660 / 422	114.40
67	10D / 23	George W. & Amy J. Dawson	505 / 549	96.00
68	10D / 25	David S. & Kimberly S. Ledoux	724 / 496	32.34
69	10D / 28	George W. & Amy J. Dawson	505 / 549	91.89
70	10D / 32.6	Linda K. Linger, et al	W51 / 755	62.33



FILE NO: 32-36-G-19
DRAWING NO: Schoen 1205 S-9H Well Plat
SCALE: 1" = 2000'
MINIMUM DEGREE OF ACCURACY: Submeter
PROVEN SOURCE OF ELEVATION: CORS. Bridgeport, WV

STATE OF WEST VIRGINIA
DEPARTMENT OF ENVIRONMENTAL PROTECTION
OIL AND GAS DIVISION

DATE: April 26 2023
OPERATOR'S WELL NO. Schoen 1205 S-9H
API WELL NO
47 - 033 - 06006
STATE COUNTY PERMIT

WELL TYPE: OIL GAS LIQUID INJECTION WASTE DISPOSAL
(IF GAS) PRODUCTION: STORAGE DEEP SHALLOW

LOCATION: ELEVATION: 1,407.3' WATERSHED: Middle West Fork Creek
DISTRICT: Grant / Hackers Creek
SURFACE OWNER: George & Rosanne Schoen
ROYALTY OWNER: Willa Post Robey, et al LEASE NO: ACREAGE: 78.20

PROPOSED WORK: DRILL CONVERT DRILL DEEPER FRACTURE OR STIMULATE PLUG OFF OLD FORMATION
 PERFORATE NEW FORMATION OTHER PHYSICAL CHANGE IN WELL (SPECIFY) BH-MOD 7.230' TVD
 PLUG AND ABANDON CLEAN OUT AND REPLUG TARGET FORMATION: Marcellus Shale ESTIMATED DEPTH: 29,089' MD

WELL OPERATOR: HG Energy II Appalachia, LLC DESIGNATED AGENT: Diane C. White
ADDRESS: 5260 Dupont Road ADDRESS: 5260 Dupont Road
Parkersburg, WV 26101 Parkersburg, WV 26101

4703306006

Map Section of Showing Proposed Path of 1205 S-9H

Well Plan Rev-D.O
1205 S-9H
Dated 4/18/23

RECEIVED
Office of Oil and Gas

NOV 15 2023

WV Department of
Environmental Protection

19

22

21

11/15/2023

11/24/2023

**INFORMATION SUPPLIED UNDER WEST VIRGINIA CODE
Chapter 22, Article 6A, Section 5(a)(5)
IN LIEU OF FILING LEASE(S) AND OTHER CONTINUING CONTRACT(S)**

Under the oath required to make the verification on page 1 of this Notice and Application, I depose and say that I am the person who signed the Notice and Application for the Applicant, and that –

- (1) the tract of land is the same tract described in this Application, partly or wholly depicted in the accompanying plat, and described in the Construction and Reclamation Plan;
- (2) the parties and recordation data (if recorded) for lease(s) or other continuing contract(s) by which the Applicant claims the right to extract, produce or market the oil or gas are as follows:

Lease Name or Number	Grantor, Lessor, etc.	Grantee, Lessee, etc.	Royalty	Book/Page
-------------------------	-----------------------	-----------------------	---------	-----------

See Attached Sheets

**Acknowledgement of Possible Permitting/Approval
In Addition to the Office of Oil and Gas**

The permit applicant for the proposed well work addressed in this application hereby acknowledges the possibility of the need for permits and/or approvals from local, state, or federal entities in addition to the DEP, Office of Oil and Gas, including but not limited to the following:

- WV Division of Water and Waste Management
- WV Division of Natural Resources WV Division of Highways
- U.S. Army Corps of Engineers
- U.S. Fish and Wildlife Service
- County Floodplain Coordinator

The applicant further acknowledges that any Office of Oil and Gas permit in no way overrides, replaces, or nullifies the need for other permits/approvals that may be necessary and further affirms that all needed permits/approvals should be acquired from the appropriate authority before the affected activity is initiated.

Well Operator: HG Energy II Appalachia, LLC
 By: Diane White *Diane White*
 Its: Accountant

HG Energy II Appalachia, LLC - Schoen 1205 S-9H Lease Chain

12055 9H	LEGACY LEASE NUMBER	TAX MAP	LEASE NUMBER	GRANTOR/LESSOR	GRANTEE/LESSEE	ROYALTY	DEED BOOK	PAGE				
1	LC074399	12-0447-0001-0000 12-0447-0002-0000	Q100514000	A. B. POST, WIDOWER; P. S. ROBEY AND WILLA ROBEY, EACH IN HIS OWN RIGHT AS HUSBAND AND WIFE; ELLA LOUISE MAXWELL AND ISAAC H. MAXWELL, HER HUSBAND; FRANCES AND GEORGE B. VIEWEG, HER HUSBAND	HOPE NATURAL GAS COMPANY	NOT LESS THAN 1/8	900	269				
				HOPE NATURAL GAS COMPANY	CONSOLIDATED GAS SUPPLY CORPORATION	CONFIRMATORY DEED	903	179				
				CONSOLIDATED GAS SUPPLY CORPORATION	CONSOLIDATED GAS TRANSMISSION CORPORATION	ASSIGNMENT	1136	250				
				CONSOLIDATED GAS TRANSMISSION CORPORATION	CNG TRANSMISSION CORPORATION	MERGER/NAME CHANGE	51	795				
				CNG TRANSMISSION CORPORATION	DOMINION TRANSMISSION, INC.	MERGER/NAME CHANGE	58	362				
				DOMINION TRANSMISSION, INC.	CNX GAS COMPANY LLC	MEMORANDUM FARMOUT AGREEMENT	1522	33				
				DOMINION TRANSMISSION, INC.	CNX GAS COMPANY LLC	FIRST AMENDMENT TO MEMORANDUM OF FARMOUT AGREEMENT	1524	491				
				CNX GAS COMPANY LLC	NOBLE ENERGY, INC.	LIMITED PARTIAL ASSIGNMENT (50%)	1543	1235				
				DOMINION TRANSMISSION, INC.	CNX GAS COMPANY LLC AND NOBLE ENERGY, INC.	PARTIAL ASSIGNMENT (32%)	1576	125				
				CNX GAS COMPANY LLC	NOBLE ENERGY, INC.	ASSIGNMENT	1584	942				
				NOBLE ENERGY, INC.	HG ENERGY II APPALACHIA, LLC	ASSIGNMENT	1600	692				
				DOMINION TRANSMISSION, INC.	DOMINION ENERGY TRANSMISSION, INC.	MERGER/NAME CHANGE	WVSOS					
				DOMINION ENERGY TRANSMISSION, INC.	HG ENERGY II APPALACHIA, LLC	SECOND AMENDMENT TO MEMORANDUM OF FARMOUT AGREEMENT	1601	581				
				DOMINION ENERGY TRANSMISSION, INC. DOMINION ENERGY TRANSMISSION, INC.	HG ENERGY II APPALACHIA, LLC HG ENERGY II APPALACHIA, LLC	THIRD AMENDMENT TO MEMORANDUM OF FARMOUT AGREEMENT ASSIGNMENT (58%)	1621 1637	1295 1083				
				4	ANTERO 5	12-0447-0003-0000 13-0447-0003-0002 13-0447-0003-0003 12-0447-0003-0004 12-0447-0003-0005	ANTERO 5	JOHN H. GERLACH AND CHARLOTTE C. GERLACH, HIS WIFE	JACKSON L. SMITH, d/b/a WEST VIRGINIA ENERGIES	NOT LESS THAN 1/8	1108	569
								JACKSON L. SMITH, d/b/a WEST VIRGINIA ENERGIES	BERRY ENERGY CONSULTANTS & MANAGERS INC	ASSIGNMENT	1140	674
BERRY ENERGY CONSULTANTS & MANAGERS INC	J & J ENTERPRISES INC	ASSIGNMENT	1110					890				
J & J ENTERPRISES INC	EASTERN AMERICAN ENERGY CORPORATION	CONFIRMATORY DEED	1200					1110				
EASTERN AMERICAN ENERGY CORPORATION	ENERGY CORPORATION OF AMERICA	MERGER/NAME CHANGE	59					879				
ENERGY CORPORATION OF AMERICA	ANTERO RESOURCES APPALACHIAN CORPORATION	ASSIGNMENT	1495					314				
ANTERO RESOURCES APPALACHIAN CORPORATION	HG ENERGY II APPALACHIA, LLC	ASSIGNMENT	1671					74				
FRENCH S. YOUNG AND ANNA J. YOUNG	HOPE NATURAL GAS COMPANY	NOT LESS THAN 1/8	147					297				
5	LC004920 LC098171	12-447-0004-0001 12-447-0004-0002 12-447-0004-0003 12-447-0004-0004 12-447-0004-0005 12-447-0004-0006 12-447-0004-0007 12-447-0004-0008 12-447-0004-0009 12-447-0004-0010 12-447-0004-0011 12-447-0004-0012 12-447-0004-0013 12-447-0021-0000 12-447-0023-0000	Q100923000 LC098171 FEE	HOPE NATURAL GAS COMPANY	CONSOLIDATED GAS SUPPLY CORPORATION	CONFIRMATORY DEED	903	179				
				CONSOLIDATED GAS SUPPLY CORPORATION	CONSOLIDATED GAS TRANSMISSION CORPORATION	ASSIGNMENT	1136	250				
				CONSOLIDATED GAS TRANSMISSION CORPORATION	CNG TRANSMISSION CORPORATION	MERGER/NAME CHANGE	51	795				
				CNG TRANSMISSION CORPORATION	DOMINION TRANSMISSION, INC.	MERGER/NAME CHANGE	58	362				
				DOMINION TRANSMISSION, INC.	CNX GAS COMPANY LLC	MEMORANDUM FARMOUT AGREEMENT	1522	33				
				DOMINION ENERGY TRANSMISSION, INC.	HG ENERGY II APPALACHIA, LLC	FIRST AMENDMENT TO MEMORANDUM OF FARMOUT AGREEMENT	1524	491				
				CNX GAS COMPANY LLC	NOBLE ENERGY, INC.	LIMITED PARTIAL ASSIGNMENT (50%)	1543	1235				
				DOMINION TRANSMISSION, INC.	CNX GAS COMPANY LLC AND NOBLE ENERGY, INC.	PARTIAL ASSIGNMENT (32%)	1576	125				
				CNX GAS COMPANY LLC	NOBLE ENERGY, INC.	ASSIGNMENT	1584	942				
				NOBLE ENERGY, INC.	HG ENERGY II APPALACHIA, LLC	ASSIGNMENT	1600	692				
				DOMINION TRANSMISSION, INC.	DOMINION ENERGY TRANSMISSION, INC.	MERGER/NAME CHANGE	WVSOS					
				DOMINION ENERGY TRANSMISSION, INC.	HG ENERGY II APPALACHIA, LLC	SECOND AMENDMENT TO MEMORANDUM OF FARMOUT AGREEMENT	1601	581				
				DOMINION ENERGY TRANSMISSION, INC.	HG ENERGY II APPALACHIA, LLC	THIRD AMENDMENT TO MEMORANDUM OF FARMOUT AGREEMENT	1621	1295				

4703506006

				DOMINION ENERGY TRANSMISSION, INC.	HG ENERGY II APPALACHIA, LLC	ASSIGNMENT (68%)	LEWIS 736	220
				DOMINION ENERGY TRANSMISSION, INC.	HG ENERGY II APPALACHIA, LLC	MINERAL DEED	1627	1254
6	LC098171 FEE, LC020404	12-0446-0029-0000 12-0447-0020-0000 12-0447-0022-0000 12-0447-0032-0000 12-0447-0033-0000 12-0447-0034-0000 12-0447-0035-0000	Q100631000 LC098171 FEE	SUSAN V. CURRY, SINGLE; AND IDA M. CURRY, SINGLE	HOPE NATURAL GAS COMPANY	NOT LESS THAN 1/8	193	265
				HOPE NATURAL GAS COMPANY	CONSOLIDATED GAS SUPPLY CORPORATION	CONFIRMATORY DEED	903	179
				CONSOLIDATED GAS SUPPLY CORPORATION	CONSOLIDATED GAS TRANSMISSION CORPORATION	ASSIGNMENT	1136	250
				CONSOLIDATED GAS TRANSMISSION CORPORATION	CNG TRANSMISSION CORPORATION	MERGER/NAME CHANGE	51	795
				CNG TRANSMISSION CORPORATION	DOMINION TRANSMISSION, INC.	MERGER/NAME CHANGE	58	362
				DOMINION TRANSMISSION, INC.	CNX GAS COMPANY LLC	MEMORANDUM FARMOUT AGREEMENT	1522	33
				CNX GAS COMPANY LLC	NOBLE ENERGY, INC.	ASSIGNMENT	1543	1235
				DOMINION TRANSMISSION, INC.	CNX GAS COMPANY LLC AND NOBLE ENERGY, INC.	ASSIGNMENT	1576	125
				CNX GAS COMPANY LLC	NOBLE ENERGY, INC.	ASSIGNMENT	1584	942
				NOBLE ENERGY, INC.	HG ENERGY II APPALACHIA, LLC	ASSIGNMENT	1600	692
				DOMINION TRANSMISSION, INC.	DOMINION ENERGY TRANSMISSION, INC.	MERGER/NAME CHANGE	WVSOS	
				DOMINION ENERGY TRANSMISSION, INC.	HG ENERGY II APPALACHIA, LLC	SECOND AMENDMENT TO MEMORANDUM OF FARMOUT AGREEMENT	1601	581
				DOMINION ENERGY TRANSMISSION, INC.	HG ENERGY II APPALACHIA, LLC	THIRD AMENDMENT TO MEMORANDUM OF FARMOUT AGREEMENT	1621	1295
DOMINION ENERGY TRANSMISSION, INC.	HG ENERGY II APPALACHIA, LLC	ASSIGNMENT (68%)	1637	1081				
7	LC066701	12-0447-0023-0000 12-0447-0023-0001 12-0447-0023-0002 12-0447-0023-0003 p/o 12-0447-0024-0000	Q101136000 FEEHG10041	MARY ALKIRE, WIDOW; R. M. MCWHORTER AND MARY JANE MCWHORTER, HIS WIFE; AND MARTHA SAELER AND GILBERT L. SAELER, HER HUSBAND	HOPE NATURAL GAS COMPANY	NOT LESS THAN 1/8	777	354
				HOPE NATURAL GAS COMPANY	CONSOLIDATED GAS SUPPLY CORPORATION	CONFIRMATORY DEED	903	179
				CONSOLIDATED GAS SUPPLY CORPORATION	CONSOLIDATED GAS TRANSMISSION CORPORATION	ASSIGNMENT	1136	250
				CONSOLIDATED GAS TRANSMISSION CORPORATION	CNG TRANSMISSION CORPORATION	MERGER/NAME CHANGE	51	795
				CNG TRANSMISSION CORPORATION	DOMINION TRANSMISSION, INC.	MERGER/NAME CHANGE	58	362
				DOMINION TRANSMISSION, INC.	CNX GAS COMPANY LLC	MEMORANDUM FARMOUT AGREEMENT	1522	33
				CNX GAS COMPANY LLC	NOBLE ENERGY, INC.	LIMITED PARTIAL ASSIGNMENT (50%)	1543	1235
				DOMINION TRANSMISSION, INC.	CNX GAS COMPANY LLC AND NOBLE ENERGY, INC.	PARTIAL ASSIGNMENT (32%)	1576	125
				CNX GAS COMPANY LLC	NOBLE ENERGY, INC.	ASSIGNMENT	1584	942
				NOBLE ENERGY, INC.	HG ENERGY II APPALACHIA, LLC	ASSIGNMENT	1600	692
				DOMINION TRANSMISSION, INC.	DOMINION ENERGY TRANSMISSION, INC.	MERGER/NAME CHANGE	WVSOS	
				DOMINION ENERGY TRANSMISSION, INC.	HG ENERGY II APPALACHIA, LLC	SECOND AMENDMENT TO MEMORANDUM OF FARMOUT AGREEMENT	1601	581
				DOMINION ENERGY TRANSMISSION, INC.	HG ENERGY II APPALACHIA, LLC	THIRD AMENDMENT TO MEMORANDUM OF FARMOUT AGREEMENT	1621	1295
DOMINION ENERGY TRANSMISSION, INC.	HG ENERGY II APPALACHIA, LLC	ASSIGNMENT (68%)	1637	1081				
8	LC008512	13-0447-0005-0000 13-0447-0005-0001 13-0447-0005-0003 13-0447-0005-0004 13-0447-0005-0006 13-0447-0005-0007 13-0447-0005-0008 13-0447-0005-0009 13-0447-0005-0010 13-0447-0005-0011 13-0447-0005-0012 13-0447-0005-0013 13-0447-0005-0014 13-0447-0005-0015 13-0447-0005-0016 13-0447-0005-0017 13-0447-0005-0018 13-0447-0005-0019 13-0447-0005-0021 13-0447-0005-0022 13-0447-0005-0023 13-0447-0005-0024	Q100305000	L. B. DAVIS AND S. J. DAVIS, HIS WIFE	SOUTH PENN OIL COMPANY	NOT LESS THAN 1/8	121	150
				SOUTH PENN OIL COMPANY	HOPE NATURAL GAS COMPANY	ASSIGNMENT	204	402
				HOPE NATURAL GAS COMPANY	CONSOLIDATED GAS SUPPLY CORPORATION	CONFIRMATORY DEED	903	179
				CONSOLIDATED GAS SUPPLY CORPORATION	CONSOLIDATED GAS TRANSMISSION CORPORATION	ASSIGNMENT	1136	250
				CONSOLIDATED GAS TRANSMISSION CORPORATION	CNG TRANSMISSION CORPORATION	MERGER/NAME CHANGE	51	795
				CNG TRANSMISSION CORPORATION	DOMINION TRANSMISSION, INC.	MERGER/NAME CHANGE	58	362
				DOMINION TRANSMISSION, INC.	CNX GAS COMPANY LLC	MEMORANDUM FARMOUT AGREEMENT	1522	33
				DOMINION TRANSMISSION, INC.	CNX GAS COMPANY LLC	FIRST AMENDMENT TO MEMORANDUM OF FARMOUT AGREEMENT	1524	491
				CNX GAS COMPANY LLC	NOBLE ENERGY, INC.	LIMITED PARTIAL ASSIGNMENT (50%)	1543	1235
				DOMINION TRANSMISSION, INC.	CNX GAS COMPANY LLC AND NOBLE ENERGY, INC.	PARTIAL ASSIGNMENT (32%)	1576	125
				CNX GAS COMPANY LLC	NOBLE ENERGY, INC.	ASSIGNMENT	1584	942
				NOBLE ENERGY, INC.	HG ENERGY II APPALACHIA, LLC	ASSIGNMENT	1600	692
				DOMINION TRANSMISSION, INC.	DOMINION ENERGY TRANSMISSION, INC.	MERGER/NAME CHANGE	WVSOS	
				DOMINION ENERGY TRANSMISSION, INC.	HG ENERGY II APPALACHIA, LLC	SECOND AMENDMENT TO MEMORANDUM OF FARMOUT AGREEMENT	1601	581

4703506006

		13-0447-0005-0025 p/o 12-0447-0023-0031 p/o 12-0447-0027-0000		DOMINION ENERGY TRANSMISSION, INC. DOMINION ENERGY TRANSMISSION, INC.	HG ENERGY II APPALACHIA, LLC HG ENERGY II APPALACHIA, LLC	THIRD AMENDMENT TO MEMORANDUM OF FARMOUT AGREEMENT ASSIGNMENT (68%)	1621 1637	1295 1081
10	LC078281	12-0447-0036-0000 p/o 12-0447-0036-0001	Q100950000	LEWIS C. SWISHER AND ALMA SWISHER, HIS WIFE CONSOLIDATED GAS SUPPLY CORPORATION CONSOLIDATED GAS TRANSMISSION CORPORATION CNG TRANSMISSION CORPORATION DOMINION TRANSMISSION, INC. CNX GAS COMPANY LLC DOMINION TRANSMISSION, INC. CNX GAS COMPANY LLC NOBLE ENERGY, INC. DOMINION TRANSMISSION, INC.	CONSOLIDATED GAS SUPPLY CORPORATION CONSOLIDATED GAS TRANSMISSION CORPORATION CNG TRANSMISSION CORPORATION DOMINION TRANSMISSION, INC. CNX GAS COMPANY LLC NOBLE ENERGY, INC. CNX GAS COMPANY LLC AND NOBLE ENERGY, INC. NOBLE ENERGY, INC. HG ENERGY II APPALACHIA, LLC DOMINION ENERGY TRANSMISSION, INC.	NOT LESS THAN 1/8 ASSIGNMENT MERGER/NAME CHANGE MERGER/NAME CHANGE MEMORANDUM FARMOUT AGREEMENT LIMITED PARTIAL ASSIGNMENT (50%) PARTIAL ASSIGNMENT (32%) ASSIGNMENT ASSIGNMENT ASSIGNMENT MERGER/NAME CHANGE SECOND AMENDMENT TO MEMORANDUM OF FARMOUT AGREEMENT THIRD AMENDMENT TO MEMORANDUM OF FARMOUT AGREEMENT ASSIGNMENT (68%)	955 1136 51 58 1522 1543 1576 1584 1600 WVSOS 1601 1621 1637	1295 378 250 795 362 33 1235 125 942 692 581 1295 1081
				FRENCH S. YOUNG AND ANNA J. YOUNG, HUSBAND AND WIFE HOPE NATURAL GAS COMPANY CONSOLIDATED GAS SUPPLY CORPORATION CONSOLIDATED GAS TRANSMISSION CORPORATION CNG TRANSMISSION CORPORATION DOMINION TRANSMISSION, INC.	HOPE NATURAL GAS COMPANY CONSOLIDATED GAS SUPPLY CORPORATION CONSOLIDATED GAS TRANSMISSION CORPORATION CNG TRANSMISSION CORPORATION DOMINION TRANSMISSION, INC. CNX GAS COMPANY LLC NOBLE ENERGY, INC. CNX GAS COMPANY LLC AND NOBLE ENERGY, INC. NOBLE ENERGY, INC. HG ENERGY II APPALACHIA, LLC DOMINION ENERGY TRANSMISSION, INC.	NOT LESS THAN 1/8 CONFIRMATORY DEED ASSIGNMENT MERGER/NAME CHANGE MERGER/NAME CHANGE MEMORANDUM FARMOUT AGREEMENT FIRST AMENDMENT TO MEMORANDUM OF FARMOUT AGREEMENT LIMITED PARTIAL ASSIGNMENT (50%) PARTIAL ASSIGNMENT (32%) ASSIGNMENT ASSIGNMENT MERGER/NAME CHANGE SECOND AMENDMENT TO MEMORANDUM OF FARMOUT AGREEMENT THIRD AMENDMENT TO MEMORANDUM OF FARMOUT AGREEMENT ASSIGNMENT (68%)	808 903 1136 51 58 1522 1524 1543 1576 1584 1600 WVSOS 1601 1621 1637	416 179 250 795 362 33 491 1235 125 942 692 581 1295 1081
				LEWIS C. SWISHER AND ALMA SWISHER, HIS WIFE CONSOLIDATED GAS SUPPLY CORPORATION CONSOLIDATED GAS TRANSMISSION CORPORATION CNG TRANSMISSION CORPORATION DOMINION TRANSMISSION, INC.	CONSOLIDATED GAS SUPPLY CORPORATION CONSOLIDATED GAS TRANSMISSION CORPORATION CNG TRANSMISSION CORPORATION DOMINION TRANSMISSION, INC. CNX GAS COMPANY LLC NOBLE ENERGY, INC. CNX GAS COMPANY LLC AND NOBLE ENERGY, INC. NOBLE ENERGY, INC. HG ENERGY II APPALACHIA, LLC DOMINION ENERGY TRANSMISSION, INC.	NOT LESS THAN 1/8 ASSIGNMENT MERGER/NAME CHANGE MERGER/NAME CHANGE MEMORANDUM FARMOUT AGREEMENT FIRST AMENDMENT TO MEMORANDUM OF FARMOUT AGREEMENT LIMITED PARTIAL ASSIGNMENT (50%) PARTIAL ASSIGNMENT (32%) ASSIGNMENT ASSIGNMENT MERGER/NAME CHANGE SECOND AMENDMENT TO MEMORANDUM OF FARMOUT AGREEMENT THIRD AMENDMENT TO MEMORANDUM OF FARMOUT AGREEMENT ASSIGNMENT (68%)	955 1136 51 58 1522 1524 1543 1576 1584 1600 WVSOS 1601 1621 1637	382 250 795 362 33 491 1235 125 942 692 581 1295 1081
				M.M.F. RANDOLPH AND S. F. RANDOLPH, HUSBAND AND WIFE	HOPE NATURAL GAS COMPANY	NOT LESS THAN 1/8	152	262

4703506006

14	LC005043	12-0467-0030-0000 12-0467-0030-0001 p/o 12-0467-0032-0003 12-0467-033-0000 p/o 12-0467-0033-0001 12-0467-0034-0000 12-0467-0035-0000 12-0467-0036-0000 12-0467-0036-0001 p/o 12-467-0032-0000	Q100542000	HOPE NATURAL GAS COMPANY	CONSOLIDATED GAS SUPPLY CORPORATION	CONFIRMATORY DEED	903	179
				CONSOLIDATED GAS SUPPLY CORPORATION	CONSOLIDATED GAS TRANSMISSION CORPORATION	ASSIGNMENT	1136	250
				CONSOLIDATED GAS TRANSMISSION CORPORATION	CNG TRANSMISSION CORPORATION	MERGER/NAME CHANGE	51	795
				CNG TRANSMISSION CORPORATION	DOMINION TRANSMISSION, INC.	MERGER/NAME CHANGE	58	362
				DOMINION TRANSMISSION, INC.	CNX GAS COMPANY LLC	MEMORANDUM FARMOUT AGREEMENT	1522	33
				CNX GAS COMPANY LLC	NOBLE ENERGY, INC.	LIMITED PARTIAL ASSIGNMENT (50%)	1543	1235
				DOMINION TRANSMISSION, INC.	CNX GAS COMPANY LLC AND NOBLE ENERGY, INC.	PARTIAL ASSIGNMENT (32%)	1576	125
				CNX GAS COMPANY LLC	NOBLE ENERGY, INC.	ASSIGNMENT	1584	942
				DOMINION TRANSMISSION, INC.	DOMINION ENERGY TRANSMISSION, INC.	MERGER/NAME CHANGE	WVSOS	
				NOBLE ENERGY, INC.	HG ENERGY II APPALACHIA, LLC	ASSIGNMENT	1600	692
				DOMINION ENERGY TRANSMISSION, INC.	HG ENERGY II APPALACHIA, LLC	SECOND AMENDMENT TO MEMORANDUM OF FARMOUT AGREEMENT	1601	581
				DOMINION ENERGY TRANSMISSION, INC.	HG ENERGY II APPALACHIA, LLC	THIRD AMENDMENT TO MEMORANDUM OF FARMOUT AGREEMENT	1621	1295
				DOMINION ENERGY TRANSMISSION, INC.	HG ENERGY II APPALACHIA, LLC	ASSIGNMENT (68%)	1637	1081
				17	LC075380	12-0467-0020-0000 12-0467-0020-0001 12-0467-0031-0000	Q100586000	MARY HOLBERT ELLYSON AND R. G. ELLYSON, HER HUSBAND; DELLA HOLBERT HARRIS AND STANLEY R. HARRIS, HER HUSBAND; HARRY E. HOLBERT AND MARY RUTH HOLBERT, HIS WIFE; EDWARD SNYDER AND VIOLET SNYDER, HIS WIFE; WILLIAM G. HOLBERT JR., A MARRIED MAN; SMITH F. HOLBERT AND GRACE HOLBERT, HIS WIFE; CLAUDIA L. HOLBERT, WIFE OF WILLIAM G. HOLBERT JR.; MARY ETHEL YOST, A MARRIED WOMAN; FRANK A. YOST, HUSBAND OF MARY ETHEL YOST; HELEN HAMILTON AND WILLIAM H. HAMILTON, HER HUSBAND; GEO. B. HOLBERT AND ELOISE V. HOLBERT, HIS WIFE; MARIE MCDUGAL AND RAY MCDUGAL, HER HUSBAND; EMMA JEANNE HOLT, DIVORCED; MARY K. NIXON AND RONALD E. NIXON, HER HUSBAND; RALPH S. SNYDER, WIDOWER; LOUISE NESSELROTTE AND HOMER NESSELROTTE, HER HUSBAND; CLYDE P. SNYDER, DIVORCED; CLARICE HOLBERT, WIDOW; DESSIE HOLBERT, WIDOW; A. W. HAMILTON, WIDOWER; A. L. LAYFIELD, WIDOWER; CATHERINE L. HOLBERT, WIDOW; C. R. HOLBERT, SR. AND ANNA M. HOLBERT, HIS WIFE; KATHRYN H. HENRY, WIDOW; CARL C. HOLBERT AND VIRGINIA L. HOLBERT, HIS WIFE; LOUISE A. EVANS AND T. J. EVANS, HER HUSBAND; JOHN L. HOLBERT AND LUCILLE E. HOLBERT, HIS WIFE; GLENNA FLOYD AND V. VERYL FLOYD, HER HUSBAND; BETTY L. LAYFIELD, SINGLE AND H. R. HOLBERT AND MARIE HOLBERT, HIS WIFE
CONSOLIDATED GAS SUPPLY CORPORATION	CONSOLIDATED GAS TRANSMISSION CORPORATION	ASSIGNMENT	1136					250
CONSOLIDATED GAS TRANSMISSION CORPORATION	CNG TRANSMISSION CORPORATION	MERGER/NAME CHANGE	51					795
CNG TRANSMISSION CORPORATION	DOMINION TRANSMISSION, INC.	MERGER/NAME CHANGE	58					362
DOMINION TRANSMISSION, INC.	CNX GAS COMPANY LLC	MEMORANDUM FARMOUT AGREEMENT	1522					33
DOMINION TRANSMISSION, INC.	CNX GAS COMPANY LLC	FIRST AMENDMENT TO MEMORANDUM OF FARMOUT AGREEMENT	1524					491
CNX GAS COMPANY LLC	NOBLE ENERGY, INC.	LIMITED PARTIAL ASSIGNMENT (50%)	1543					1235
DOMINION TRANSMISSION, INC.	CNX GAS COMPANY LLC AND NOBLE ENERGY, INC.	PARTIAL ASSIGNMENT (32%)	1576					125
CNX GAS COMPANY LLC	NOBLE ENERGY, INC.	ASSIGNMENT	1584					942
NOBLE ENERGY, INC.	HG ENERGY II APPALACHIA, LLC	ASSIGNMENT	1600					692
DOMINION TRANSMISSION, INC.	DOMINION ENERGY TRANSMISSION, INC.	MERGER/NAME CHANGE	WVSOS					
DOMINION ENERGY TRANSMISSION, INC.	HG ENERGY II APPALACHIA, LLC	SECOND AMENDMENT TO MEMORANDUM OF FARMOUT AGREEMENT	1601					581
DOMINION ENERGY TRANSMISSION, INC.	HG ENERGY II APPALACHIA, LLC	THIRD AMENDMENT TO MEMORANDUM OF FARMOUT AGREEMENT	1621					1295
DOMINION ENERGY TRANSMISSION, INC.	HG ENERGY II APPALACHIA, LLC	ASSIGNMENT (68%)	1637					1081
SIDNEY HAYMOND AND VIRGINIA HAYMOND, HIS WIFE	SOUTH PENN OIL COMPANY	NOT LESS THAN 1/8	121					154

4703306006

19	LC008514	12-0467-0052-0000	Q100306000	SOUTH PENN OIL COMPANY	HOPE NATURAL GAS COMPANY	ASSIGNMENT	204	402
				HOPE NATURAL GAS COMPANY	CONSOLIDATED GAS SUPPLY CORPORATION	CONFIRMATORY DEED	903	179
				CONSOLIDATED GAS SUPPLY CORPORATION	CONSOLIDATED GAS TRANSMISSION CORPORATION	ASSIGNMENT	1136	250
				CONSOLIDATED GAS TRANSMISSION CORPORATION	CNG TRANSMISSION CORPORATION	MERGER/NAME CHANGE	51	795
				CNG TRANSMISSION CORPORATION	DOMINION TRANSMISSION, INC.	MERGER/NAME CHANGE	58	362
				DOMINION TRANSMISSION, INC.	CNX GAS COMPANY LLC	MEMORANDUM FARMOUT AGREEMENT	1522	33
				CNX GAS COMPANY LLC	NOBLE ENERGY, INC.	LIMITED PARTIAL ASSIGNMENT (50%)	1543	1235
				DOMINION TRANSMISSION, INC.	CNX GAS COMPANY LLC AND NOBLE ENERGY, INC.	PARTIAL ASSIGNMENT (32%)	1576	125
				CNX GAS COMPANY LLC	NOBLE ENERGY, INC.	ASSIGNMENT	1584	942
				DOMINION TRANSMISSION, INC.	DOMINION ENERGY TRANSMISSION, INC.	MERGER/NAME CHANGE	WVSOS	
				NOBLE ENERGY, INC.	HG ENERGY II APPALACHIA, LLC	ASSIGNMENT	1600	692
				DOMINION ENERGY TRANSMISSION, INC.	HG ENERGY II APPALACHIA, LLC	SECOND AMENDMENT TO MEMORANDUM OF FARMOUT AGREEMENT	1601	581
				DOMINION ENERGY TRANSMISSION, INC.	HG ENERGY II APPALACHIA, LLC	THIRD AMENDMENT TO MEMORANDUM OF FARMOUT AGREEMENT	1621	1295
DOMINION ENERGY TRANSMISSION, INC.	HG ENERGY II APPALACHIA, LLC	ASSIGNMENT (68%)	1637	1081				
21	LC022729	12-0487-0005-0000	Q100867000	PATRICIA B. SMITH, WIDOW; AND VIRGINIA LAURA SMITH, SINGLE	CONSOLIDATED GAS SUPPLY CORPORATION	NOT LESS THAN 1/8	996	672
				CONSOLIDATED GAS SUPPLY CORPORATION	CONSOLIDATED GAS TRANSMISSION CORPORATION	ASSIGNMENT	1136	250
				CONSOLIDATED GAS TRANSMISSION CORPORATION	CNG TRANSMISSION CORPORATION	MERGER/NAME CHANGE	51	795
				CNG TRANSMISSION CORPORATION	DOMINION TRANSMISSION, INC.	MERGER/NAME CHANGE	58	362
				DOMINION TRANSMISSION, INC.	CNX GAS COMPANY LLC	MEMORANDUM FARMOUT AGREEMENT	1522	33
				CNX GAS COMPANY LLC	NOBLE ENERGY, INC.	LIMITED PARTIAL ASSIGNMENT (50%)	1543	1235
				DOMINION TRANSMISSION, INC.	CNX GAS COMPANY LLC AND NOBLE ENERGY, INC.	PARTIAL ASSIGNMENT (32%)	1576	125
				CNX GAS COMPANY LLC	NOBLE ENERGY, INC.	ASSIGNMENT	1584	942
				DOMINION TRANSMISSION, INC.	DOMINION ENERGY TRANSMISSION, INC.	MERGER/NAME CHANGE	WVSOS	
				NOBLE ENERGY, INC.	HG ENERGY II APPALACHIA, LLC	ASSIGNMENT	1600	692
				DOMINION ENERGY TRANSMISSION, INC.	HG ENERGY II APPALACHIA, LLC	SECOND AMENDMENT TO MEMORANDUM OF FARMOUT AGREEMENT	1601	581
				DOMINION ENERGY TRANSMISSION, INC.	HG ENERGY II APPALACHIA, LLC	ASSIGNMENT (68%)	1637	1081
				64	LC066698	04-010C-0016-0000	Q100879000	MELVINA E. COOKMAN, A SINGLE WOMAN
HOPE NATURAL GAS COMPANY	CONSOLIDATED GAS SUPPLY CORPORATION	CONFIRMATORY DEED	294					89
CONSOLIDATED GAS SUPPLY CORPORATION	CONSOLIDATED GAS TRANSMISSION CORPORATION	ASSIGNMENT	425					127
CONSOLIDATED GAS TRANSMISSION CORPORATION	CNG TRANSMISSION CORPORATION	MERGER/NAME CHANGE	WVSOS					
CNG TRANSMISSION CORPORATION	DOMINION TRANSMISSION, INC.	MERGER/NAME CHANGE	WVSOS					
DOMINION TRANSMISSION, INC.	CNX GAS COMPANY LLC	MEMORANDUM FARMOUT AGREEMENT	672					154
CNX GAS COMPANY LLC	NOBLE ENERGY, INC.	LIMITED PARTIAL ASSIGNMENT (50%)	684					57
DOMINION TRANSMISSION, INC.	CNX GAS COMPANY LLC AND NOBLE ENERGY, INC.	PARTIAL ASSIGNMENT (32%)	712					848
CNX GAS COMPANY LLC	NOBLE ENERGY, INC.	ASSIGNMENT	717					1
DOMINION TRANSMISSION, INC.	DOMINION ENERGY TRANSMISSION, INC.	MERGER/NAME CHANGE	WVSOS					
NOBLE ENERGY, INC.	HG ENERGY II APPALACHIA, LLC	ASSIGNMENT	722					170
DOMINION ENERGY TRANSMISSION, INC.	HG ENERGY II APPALACHIA, LLC	SECOND AMENDMENT TO MEMORANDUM OF FARMOUT AGREEMENT	723					499
DOMINION ENERGY TRANSMISSION, INC.	HG ENERGY II APPALACHIA, LLC	THIRD AMENDMENT TO MEMORANDUM OF FARMOUT AGREEMENT	734					558
DOMINION ENERGY TRANSMISSION, INC.	HG ENERGY II APPALACHIA, LLC	ASSIGNMENT (68%)	736	220				
				ALLIE B. JACKSON AND M.E. JACKSON, HER HUSBAND; MELVINA E. COOKMAN, SINGLE; COOKMAN SMITH, WIDOWER; AND MARY ALKIRE, WIDOW	HOPE NATURAL GAS COMPANY	NOT LESS THAN 1/8	249	275
				HOPE NATURAL GAS COMPANY	CONSOLIDATED GAS SUPPLY CORPORATION	CONFIRMATORY DEED	294	89
				CONSOLIDATED GAS SUPPLY CORPORATION	CONSOLIDATED GAS TRANSMISSION CORPORATION	ASSIGNMENT	425	127
				CONSOLIDATED GAS TRANSMISSION CORPORATION	CNG TRANSMISSION CORPORATION	MERGER/NAME CHANGE	WVSOS	
				CNG TRANSMISSION CORPORATION	DOMINION TRANSMISSION, INC.	MERGER/NAME CHANGE	WVSOS	
				DOMINION TRANSMISSION, INC.	CNX GAS COMPANY LLC	MEMORANDUM FARMOUT AGREEMENT	672	154
				DOMINION TRANSMISSION, INC.	CNX GAS COMPANY LLC	MEMORANDUM FARMOUT AGREEMENT	672	154

4703306006

71	LC067679 WD67679	04-020C-0015-0000	Q101111000	CNX GAS COMPANY LLC	NOBLE ENERGY, INC.	LIMITED PARTIAL ASSIGNMENT (50%)	684	57				
				DOMINION TRANSMISSION, INC.	CNX GAS COMPANY LLC AND NOBLE ENERGY, INC.	PARTIAL ASSIGNMENT (32%)	712	848				
				CNX GAS COMPANY LLC	NOBLE ENERGY, INC.	ASSIGNMENT	717	1				
				NOBLE ENERGY, INC.	HG ENERGY II APPALACHIA, LLC	ASSIGNMENT	722	170				
				DOMINION TRANSMISSION, INC.	DOMINION ENERGY TRANSMISSION, INC.	MERGER/NAME CHANGE	WVSOS					
				DOMINION ENERGY TRANSMISSION, INC.	HG ENERGY II APPALACHIA, LLC	SECOND AMENDMENT TO MEMORANDUM OF FARMOUT AGREEMENT	723	499				
				DOMINION ENERGY TRANSMISSION, INC.	HG ENERGY II APPALACHIA, LLC	THIRD AMENDMENT TO MEMORANDUM OF FARMOUT AGREEMENT	734	558				
				DOMINION ENERGY TRANSMISSION, INC.	HG ENERGY II APPALACHIA, LLC	ASSIGNMENT (68%)	736	220				
				GEORGE CUMMINGS AND ELLA CUMMINGS, HIS WIFE	HOPE NATURAL GAS COMPANY	NOT LESS THAN 1/8	82	109				
				HOPE NATURAL GAS COMPANY	SOUTH PENN OIL COMPANY	ASSIGNMENT	91	259				
84	LC028354	04-010C-0012-0000 04-010C-0013-0000 04-010D-0009-0000 04-010D-0010-0000 04-010D-0023-0000	Q100821000	SOUTH PENN OIL COMPANY	HOPE NATURAL GAS COMPANY	ASSIGNMENT	120	247				
				HOPE NATURAL GAS COMPANY	CONSOLIDATED GAS SUPPLY CORPORATION	CONFIRMATORY DEED	294	89				
				CONSOLIDATED GAS SUPPLY CORPORATION	CONSOLIDATED GAS TRANSMISSION CORPORATION	ASSIGNMENT	425	127				
				CONSOLIDATED GAS TRANSMISSION CORPORATION	CNG TRANSMISSION CORPORATION	MERGER/NAME CHANGE	WVSOS					
				CNG TRANSMISSION CORPORATION	DOMINION TRANSMISSION, INC.	MERGER/NAME CHANGE	WVSOS					
				DOMINION TRANSMISSION, INC.	CNX GAS COMPANY LLC	MEMORANDUM OF FARMOUT AGREEMENT	672	154				
				CNX GAS COMPANY LLC	NOBLE ENERGY, INC.	LIMITED PARTIAL ASSIGNMENT (50%)	684	57				
				DOMINION TRANSMISSION, INC.	CNX GAS COMPANY LLC AND NOBLE ENERGY, INC.	PARTIAL ASSIGNMENT (32%)	712	848				
				CNX GAS COMPANY LLC	NOBLE ENERGY, INC.	ASSIGNMENT	717	1				
				DOMINION TRANSMISSION, INC.	DOMINION ENERGY TRANSMISSION, INC.	MERGER/NAME CHANGE	WVSOS					
				NOBLE ENERGY, INC.	HG ENERGY II APPALACHIA, LLC	ASSIGNMENT	722	170				
				DOMINION ENERGY TRANSMISSION, INC.	HG ENERGY II APPALACHIA, LLC	SECOND AMENDMENT TO MEMORANDUM OF FARMOUT AGREEMENT	723	499				
				DOMINION ENERGY TRANSMISSION, INC.	HG ENERGY II APPALACHIA, LLC	THIRD AMENDMENT TO MEMORANDUM OF FARMOUT AGREEMENT	734	558				
				DOMINION ENERGY TRANSMISSION, INC.	HG ENERGY II APPALACHIA, LLC	ASSIGNMENT	LEWIS 736	220				
				93	LC073274	04-010C-0018-0000	Q100325000	EUGENIA F. MILLS ET VIR	HOPE NATURAL GAS COMPANY	NOT LESS THAN 1/8	339	329
								HOPE NATURAL GAS COMPANY	SOUTH PENN OIL COMPANY	ASSIGNMENT	91	259
								SOUTH PENN OIL COMPANY	HOPE NATURAL GAS COMPANY	ASSIGNMENT	120	247
								HOPE NATURAL GAS COMPANY	CONSOLIDATED GAS SUPPLY CORPORATION	CONFIRMATORY DEED	294	89
CONSOLIDATED GAS SUPPLY CORPORATION	CONSOLIDATED GAS TRANSMISSION CORPORATION	ASSIGNMENT	425					127				
CONSOLIDATED GAS TRANSMISSION CORPORATION	CNG TRANSMISSION CORPORATION	MERGER/NAME CHANGE	WVSOS									
CNG TRANSMISSION CORPORATION	DOMINION TRANSMISSION, INC.	MERGER/NAME CHANGE	WVSOS									
DOMINION TRANSMISSION, INC.	CNX GAS COMPANY LLC	MEMORANDUM OF FARMOUT AGREEMENT	672					154				
CNX GAS COMPANY LLC	NOBLE ENERGY, INC.	LIMITED PARTIAL ASSIGNMENT (50%)	684					57				
DOMINION TRANSMISSION, INC.	CNX GAS COMPANY LLC AND NOBLE ENERGY, INC.	PARTIAL ASSIGNMENT (32%)	712					848				
CNX GAS COMPANY LLC	NOBLE ENERGY, INC.	ASSIGNMENT	717					1				
DOMINION TRANSMISSION, INC.	DOMINION ENERGY TRANSMISSION, INC.	MERGER/NAME CHANGE	WVSOS									
NOBLE ENERGY, INC.	HG ENERGY II APPALACHIA, LLC	ASSIGNMENT	722					170				
DOMINION ENERGY TRANSMISSION, INC.	HG ENERGY II APPALACHIA, LLC	SECOND AMENDMENT TO MEMORANDUM OF FARMOUT AGREEMENT	723					499				
DOMINION ENERGY TRANSMISSION, INC.	HG ENERGY II APPALACHIA, LLC	THIRD AMENDMENT TO MEMORANDUM OF FARMOUT AGREEMENT	734					558				
DOMINION ENERGY TRANSMISSION, INC.	HG ENERGY II APPALACHIA, LLC	ASSIGNMENT	LEWIS 736	220								

4703306006