



west virginia department of environmental protection

Office of Oil and Gas
601 57th Street, S.E.
Charleston, WV 25304
(304) 926-0450
fax: (304) 926-0452

Harold D. Ward, Cabinet Secretary
www.dep.wv.gov

Monday, October 31, 2022
PERMIT MODIFICATION APPROVAL
Horizontal 6A / New Drill

HG ENERGY II APPALACHIA, LLC
5260 DUPONT ROAD

PARKERSBURG, WV 26101

Re: Permit Modification Approval for SCHOEN 1205 S-7H
47-033-05995-00-00

Lateral Extension, Leases Added

HG ENERGY II APPALACHIA, LLC

The Office of Oil and Gas has reviewed the attached permit modification for the above referenced permit. The attached modification has been approved and well work may begin. Please be reminded that the oil and gas inspector is to be notified twenty-four (24) hours before permitted well work is commenced.

If there are any questions, please feel free to contact me at (304) 926- 0450.

James A. Martin
Chief

Operator's Well Number: SCHOEN 1205 S-7H
Farm Name: GEORGE & ROSANNE SCHOEN
U.S. WELL NUMBER: 47-033-05995-00-00
Horizontal 6A New Drill
Date Modification Issued: 10/31/2022

Promoting a healthy environment.

11/04/2022



HG Energy, LLC
5260 Dupont Road
Parkersburg, WV 26101
(304) 420-1100 - Office
(304) 863-3172 - Fax

CK# 032884

Amnt \$ 5,000.00

September 27, 2022

WV DEP
Division of Oil & Gas
Attn: Cragin Blevins
601 57th Street
Charleston, West Virginia 25304

RECEIVED
Office of Oil & Gas

OCT 19 2022

WV Department of
Environmental Protection

RE: Schoen 1205 S-7H Permit Revision Request – (47-033-05995)
Grant District, Harrison County
West Virginia

Dear Mr. Blevins -

Per our discussions, enclosed are revised forms (survey plat, mylar, WW-6B, casing schematic, WW6A-1 and a check for expedited service for the 1205 S-7H well work permit. We request the permit be modified as additional leases have been secured to extend the lateral.

Please let me know if you have any questions or require additional information. I can be reached at (304) 420-1119 or dwhite@hgenergyllc.com.

Very truly yours,

Diane White

Diane C. White

Enclosures

cc: Sam Ward – WV DEP State Inspector

11/04/2022

STATE OF WEST VIRGINIA
DEPARTMENT OF ENVIRONMENTAL PROTECTION, OFFICE OF OIL AND GAS
WELL WORK PERMIT APPLICATION

1) Well Operator: HG Energy II Appalachia, L.P. 494519932 Harrison Grant Mount Clare 7.5'
Operator ID County District Quadrangle

2) Operator's Well Number: Schoen 1205 S-7H ✓ Well Pad Name: Schoen 1205

3) Farm Name/Surface Owner: George Schoen ✓ Public Road Access: McWhorter Road / SR25

4) Elevation, current ground: 1410' Elevation, proposed post-construction: 1407'

5) Well Type (a) Gas Oil _____ Underground Storage _____
Other _____
(b) If Gas Shallow Deep _____
Horizontal

*SDW -
10/13/2022*

6) Existing Pad: Yes or No No

7) Proposed Target Formation(s), Depth(s), Anticipated Thickness and Expected Pressure(s):
Marcellus at 7214' / 7315' and 101' in thickness. Anticipated pressure at 4314#.

8) Proposed Total Vertical Depth: 7230' ✓

9) Formation at Total Vertical Depth: Marcellus ✓

10) Proposed Total Measured Depth: 29,781' ✓

11) Proposed Horizontal Leg Length: 21,873' ✓

12) Approximate Fresh Water Strata Depths: 135', 480', 640', 728' ✓

13) Method to Determine Fresh Water Depths: Nearest offset well data ✓

14) Approximate Saltwater Depths: 1730, 1780, 2010 ✓

15) Approximate Coal Seam Depths: 501, 650', 730', 736' (Surface casing is being extended to cover the coal) ✓

16) Approximate Depth to Possible Void (coal mine, karst, other): None

17) Does Proposed well location contain coal seams directly overlying or adjacent to an active mine? Yes _____ No

(a) If Yes, provide Mine Info: Name: _____
Depth: _____
Seam: _____
Owner: _____

RECEIVED
Office of Oil & Gas
OCT 19 2022
WV Department of
Environmental Protection

18) CASING AND TUBING PROGRAM

TYPE	Size (in)	New or Used	Grade	Weight per ft. (lb/ft)	FOOTAGE: For Drilling (ft)	INTERVALS: Left in Well (ft)	CEMENT: Fill-up (Cu. Ft.)/CTS
Conductor	30"	New	LS	157.5	120'	120' ✓	Drilled In
Fresh Water/Coal	20"	NEW	J-55	94	1200'	1200' ✓	40% excess, CTS ✓
Intermediate 1	13 3/8"	NEW	J-55	68	2100'	2100' ✓	40% excess, CTS ✓
Intermediate 2	9 5/8"	NEW	J-55	40	2950'	2950' ✓	40% excess tail, CTS ✓
Production	5 1/2"	NEW	P-110	23	29781'	29781' ✓	20% excess tail, CTS ✓
Tubing							
Liners							

SDW
10/13/2022

TYPE	Size (in)	Wellbore Diameter (in)	Wall Thickness (in)	Burst Pressure (psi)	Anticipated Max. Internal Pressure (psi)	Cement Type	Cement Yield (cu. ft./k)
Conductor	30"	30"	.500				Drilled In
Fresh Water/Coal	20"	24"	.438	2110	1200	Type 1, Class A	40% excess yield = 1.20, CTS ✓
Intermediate 1	13 3/8"	17 1/2"	.480	3450		Type 1/Class A	Lead 40% excess, Tail 0% excess ✓
Intermediate 2	9 5/8"	12 1/4"	.395	3950		Type 1/Class A	Lead 40% excess, Tail 0% Excess ✓
Production	5 1/2"	8 1/2"	.415	16240	12500 ✓	Type 1/Class A	20% excess yield = 1.19, tail yield 1.19 ✓
Tubing							
Liners							

RECEIVED
 Office of Oil & Gas
OCT 19 2022
 WV Department of
 Environmental Protection

PACKERS

Kind:				
Sizes:				
Depths Set:				

19) Describe proposed well work, including the drilling and plugging back of any pilot hole:

Drill the vertical depth to the Marcellus at an estimated total vertical depth of approximately 7230 feet. Drill horizontal leg to estimated 21,873' lateral length, 29,781' TMD. Hydraulically fracture stimulate and be capable of producing from the Marcellus Formation. Should we encounter an unanticipated void in the coal, we will install a minimum of 20' of casing below the void but not more than 100' below the void, set a basket and grout to surface. We plan to run an ACP above the Gantz/Dominion Storage interval to aid in sealing off and isolating the storage interval.

20) Describe fracturing/stimulating methods in detail, including anticipated max pressure and max rate:

The stimulation will be completed with multiple stages divided over the lateral length of the well. Stage spacing is dependent upon engineering design. Slickwater fracturing technique will be utilized on each stage using sand, water, and chemicals. See attached list. Maximum pressure not to exceed 12,500 psi.

21) Total Area to be disturbed, including roads, stockpile area, pits, etc., (acres): 29.485 acres

22) Area to be disturbed for well pad only, less access road (acres): 9.246 acres

23) Describe centralizer placement for each casing string:

For centralizers will be used with conductor casing.
Freshwater - centralized every 3 joints to surface.
Coal - Blow Spring on every joint, will also be running ACP for isolating storage zone.
Intermediate 1 - Blow Spring on first 2 joints then every third joint to 100' from surface.
Intermediate 2 - Blow Spring on first 2 joints then every third joint to 100' from surface.
Production - Run 1 spiral centralizer every 3 joints from the top of the curve to surface. Run 1 spiral centralizer every 3 joints from the 1st 5.5' long joint to the top of the curve.

RECEIVED
Office of Oil & Gas
OCT 19 2022
WV Department of
Environmental Protection

24) Describe all cement additives associated with each cement type:

Conductor - A/A Casing to be cased in w/ Dual Rotary Rig
Fresh Water - 15.6 ppg PNE-1 + 3% bwoc CaCl₂ 40% Excess Yield = 1.20 CTS
Intermediate 1 - Lead: 15.4 ppg PNE-1 + 2.5% bwoc CaCl₂ 40% Excess / Tail: 15.6 ppg PNE-1 + 2.5% bwoc CaCl₂ zero% Excess CTS
Intermediate 2 - Lead: 15.4 ppg PNE-1 + 2.5% bwoc CaCl₂ 40% Excess / Tail: 15.6 ppg PNE-1 + 2.5% bwoc CaCl₂ zero% Excess CTS
Production - Lead: 14.5 ppg POZ-PNE-1 + 0.3% bwoc R3 - 1% bwoc ECI + 0.75 gal/AA FP13L - 0.3% bwoc MPA170781 - 4.8 ppg PNE-1 + 0.35% bwoc R3 + 0.75 gal/AA FP13L + 50% bwoc ASCA1 + 0.5% bwoc MPA17020% Excess/Excess Yield=1.19Tail Yield=1.56CTS

25) Proposed borehole conditioning procedures:

Conductor - Ensure the hole is clean at TD.
Fresh Water - Once casing is at setting depth, circulate a minimum of one hole volume with Fresh Water prior to pumping cement.
Coal - Once casing is at setting depth, Circulate and condition at TD. Circulate a minimum of one hole volume prior to pumping cement.
Intermediate 1 - Once casing is at setting depth, Circulate and condition at TD. Circulate a minimum of one hole volume prior to pumping cement.
Intermediate 2 - Once casing is at setting depth, Circulate and condition at TD. Circulate a minimum of one hole volume prior to pumping cement.
Production - Once on bottom/TD with casing, circulate at max allowable pump rate for at least 2x bottoms up, or until returns and pump pressures indicate the hole is clean. Circulate a minimum of one hole volume prior to pumping cement.

*Note: Attach additional sheets as needed.



RECEIVED
Office of Oil & Gas
OCT 19 2022

1205 S-7H
Marcellus Shale Horizontal
Harrison County, WV

Ground Elevation		1205 S-7H SHL		1205 S-7H LP		1205 S-7H BHL		1205 S-7H SHL		1205 S-7H LP		1205 S-7H BHL	
Azim		1407.3'		159.324°		1407.3'		159.324°		1407.3'		159.324°	
WELLBORE DIAGRAM	HOLE	CASING	GEOLOGY	TOP	BASE	MUD	CEMENT	CENTRALIZERS	CONDITIONING	COMMENTS			
	30"	30" 157.5# LS	Conductor	0	120	AIR	N/A, Casing to be drilled in w/ Dual Rotary Rig	N/A	Ensure the hole is clean at TD.	Conductor casing = 0.5" wall thickness			
	24"	20" 94# J-55	Fresh Water Coal	0 730	135, 480, 640, 728 736	AIR	15.6 ppg PNE-1 + 3% bwoc CaCl 40% Excess Yield=1.20 / CTS	Centralized every 3 joints to surface	Once casing is at setting depth, circulate a minimum of one hole volume with Fresh Water prior to pumping cement.	Surface casing = 0.438" wall thickness Burst=2110 psi			
	17.5"	13-3/8" 68# J-55 BTC	Little/Big Lime Injun / Gartz (Storage)	1467 / 1510 1565 / 1900	1482 / 1556 1690 / 1970	AIR / KCL Salt Polymer	Lead: 15.4 ppg PNE-1 + 2.5% bwoc CaCl 40% Excess / Tail: 15.9 ppg PNE-1 + 2.5% bwoc CaCl zero% Excess. CTS	Bow Spring on every joint <i>*will also be running ACP for isolating storage zone*</i>	Once casing is at setting depth, Circulate and condition at TD. Circulate a minimum of one hole volume prior to pumping cement.	Intermediate casing = 0.460" wall thickness Burst=3450 psi			
	12.25"	9-5/8" 40# J-55 BTC	Fifty / Thirty Foot Gordon Strey / Gordon 5th Sand Warren	1993 / 2112 2195 / 2250 2440 2835	2093 / 2147 2250 / 2310 2468 2860	AIR / KCL Salt Polymer	Lead: 15.4 ppg PNE-1 + 2.5% bwoc CaCl 40% Excess / Tail: 15.9 ppg PNE-1 + 2.5% bwoc CaCl zero% Excess. CTS	Bow Spring on first 2 joints then every third joint to 100' form surface	Once casing is at setting depth, Circulate and condition mud at TD. Circulate a minimum of one hole volume prior to pumping cement.	Intermediate casing = 0.395" wall thickness Burst=3950 psi			
	8.5" Vertical	5-1/2" 23# P-110 HP CDC HTQ	Rhinestreet Cashaqua Middlesex West River Burkett Tully Limestone Hamilton Marcellus	5872 6549 6740 6870 7003 7048 7048 7149 7214 7315	6549 6740 6870 7003 7048 7149 7214 7315	9.0ppg SOBM	Lead: 14.5 ppg POZ:PNE-1 + 0.3% bwoc R3 + 1% bwoc EC1 + 0.75 gal/sk FP13L + 0.3% bwoc MPA170 Tail: 14.8 ppg PNE-1 + 0.35% bwoc R3 + 0.75 gal/sk FP13L + 50% bwoc ASCA1 + 0.5% bwoc MPA170 20% Excess Lead Yield=1.19 Tail Yield=1.94 CTS	Run 1 spiral centralizer every 5 joints from the top of the curve to surface.	Once on bottom/TD with casing, circulate at max allowable pump rate for at least 2x bottoms up, or until returns and pump pressures indicate the hole is clean. Circulate a minimum of one hole volume prior to pumping cement.	Production casing = 0.415" wall thickness Burst=16240 psi Note: Actual centralizer schedules may be changed due to hole conditions			
								Run 1 spiral centralizer every 3 joints from the 1st 5.5" long joint to the top of the curve.					
	8.5" Lateral	8.5" Curve	TMD / TVD (Production) Onondaga	29781 7315	7240 7315	11.5ppg-12.5ppg SOBM	11.5ppg-12.5ppg SOBM	Run 1 spiral centralizer every 3 joints from the 1st 5.5" long joint to the top of the curve.					

LP @ 7240' TVD / 7908' MD
8.5" Hole - Cemented Long String
5-1/2" 23# P-110 HP CDC HTQ

+/-21873' ft Lateral
TD @ +/-7240' TVD
+/-29781' MD
X=centralizers

11/04/2022

**INFORMATION SUPPLIED UNDER WEST VIRGINIA CODE
Chapter 22, Article 6A, Section 5(a)(5)
IN LIEU OF FILING LEASE(S) AND OTHER CONTINUING CONTRACT(S)**

Under the oath required to make the verification on page 1 of this Notice and Application, I depose and say that I am the person who signed the Notice and Application for the Applicant, and that –

(1) the tract of land is the same tract described in this Application, partly or wholly depicted in the accompanying plat, and described in the Construction and Reclamation Plan;

(2) the parties and recordation data (if recorded) for lease(s) or other continuing contract(s) by which the Applicant claims the right to extract, produce or market the oil or gas are as follows:

Lease Name or Number	Grantor, Lessor, etc.	Grantee, Lessee, etc.	Royalty	Book/Page
----------------------	-----------------------	-----------------------	---------	-----------

See Attached Sheets

RECEIVED
Office of Oil & Gas
OCT 19 2022
WV Department of
Environmental Protection

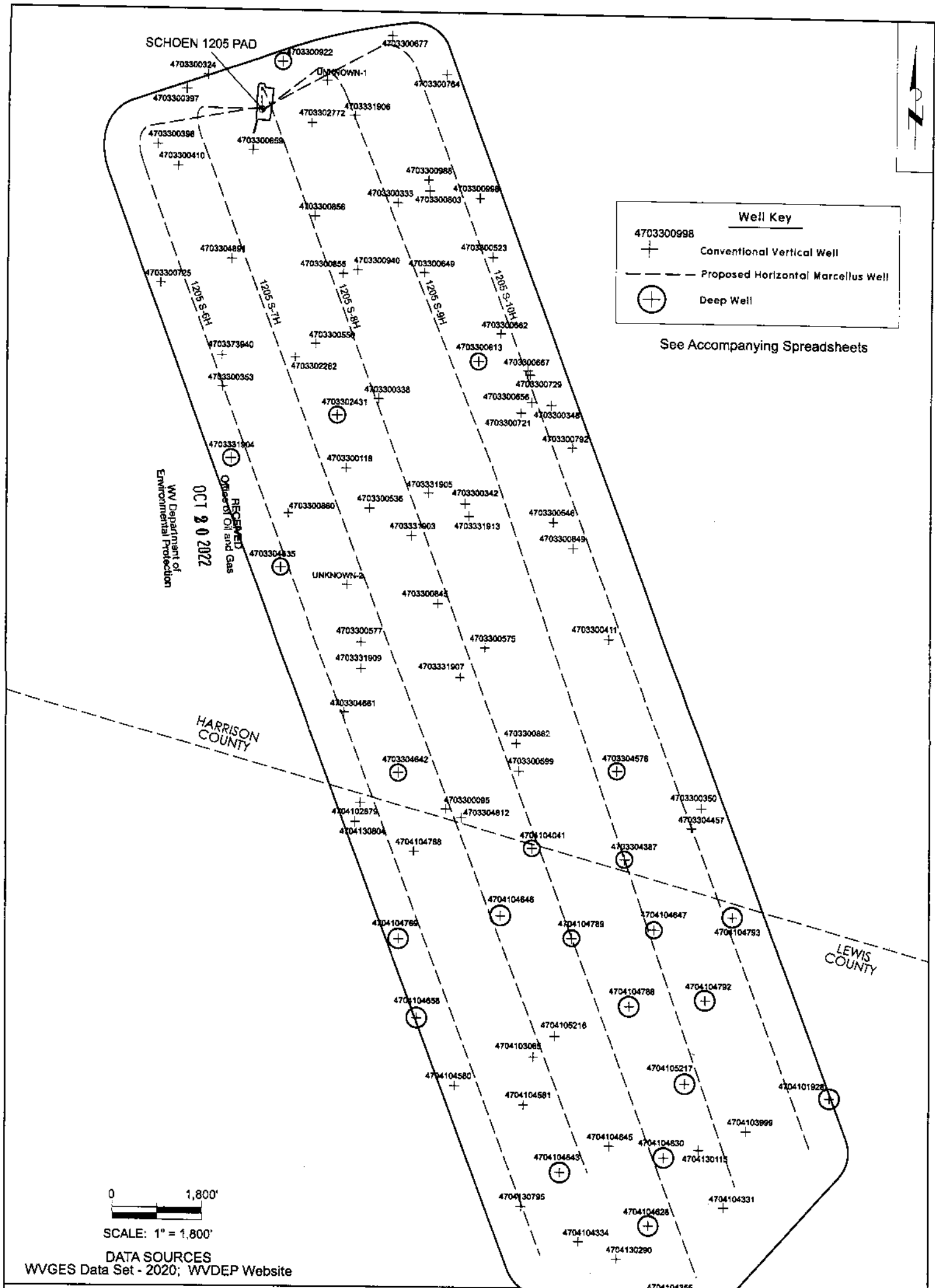
**Acknowledgement of Possible Permitting/Approval
In Addition to the Office of Oil and Gas**

The permit applicant for the proposed well work addressed in this application hereby acknowledges the possibility of the need for permits and/or approvals from local, state, or federal entities in addition to the DEP, Office of Oil and Gas, including but not limited to the following:

- WV Division of Water and Waste Management
- WV Division of Natural Resources WV Division of Highways
- U.S. Army Corps of Engineers
- U.S. Fish and Wildlife Service
- County Floodplain Coordinator

The applicant further acknowledges that any Office of Oil and Gas permit in no way overrides, replaces, or nullifies the need for other permits/approvals that may be necessary and further affirms that all needed permits/approvals should be acquired from the appropriate authority before the affected activity is initiated.

Well Operator: HG Energy II Appalachia, LLC
 By: Diane White *Diane White*
 Its: Accountant



Area of Review for:

SCHOEN 1205 SOUTH UNIT

Proposed 1205 S-6H Proposed 1205 S-7H Proposed 1205 S-8H
Proposed 1205 S-9H Proposed 1205 S-10H

Grant District, Harrison County, W.Va. &
Hacker's Creek District, Lewis County, W.Va.

HG ENERGY, II APPALACHIA, LLC
5260 DuPont Road, Parkersburg, WV 26101



9/16/2022

EXISTING WELLS LOCATED WITHIN THE AREA OF REVIEW FOR:
SCHOEN 1205 SOUTH UNIT AND PROPOSED WELLS S-6H, S-7H, S-8H, S-9H & S-10H

CT	API	COUNTY	FARM	OPERATOR NAME	FORMATION NAME	WELL TYPE	TVD	STATUS	LATITUDE	LONGITUDE
1	4703300095	Harrison	A B Jackson 1	Eastern Gas Transmission & Storage, Inc.	Fifth	Storage	2219	ACTIVE	39.113482	-80.340584
2	4703300118	Harrison	O F Allman 1	Eastern Gas Transmission & Storage, Inc.	Gantz	Storage	1679	ACTIVE	39.131942	-80.346144
3	4703300324	Harrison	John H Hardway 1	Eastern Gas Transmission & Storage, Inc.	Gantz	Storage	1644	ACTIVE	39.153472	-80.355885
4	4703300333	Harrison	James M Waggoner	UNKNOW	Hampshire Grp	Gas	2165	PLUGGED	39.146495	-80.342517
5	4703300338	Harrison	F S Young	Eastern Gas Transmission & Storage, Inc.	Gantz	Storage	1700	ACTIVE	39.135769	-80.343869
6	4703300342	Harrison	Asa Boyce	UNKNOW	Fifth	Gas	2269	PLUGGED	39.129986	-80.337801
7	4703300348	Harrison	Sarah F Vincent	UNKNOW	Hampshire Grp	Gas	2054	PLUGGED	39.135437	-80.331733
8	4703300350	Harrison	Viola Mount	Eastern Gas Transmission & Storage, Inc.	Greenland Gap Fm	Gas	4370	PLUGGED	39.113273	-80.321297
9	4703300353	Harrison	G M Curry et al	Eastern Gas Transmission & Storage, Inc.	Gordon (Lundiff)	Storage	2047	ACTIVE	39.136407	-80.354852
10	4703300397	Harrison	Marcella R Bond	Hope Natural Gas Company	Up Devonian	Gas	1587	PLUGGED	39.152681	-80.357369
11	4703300398	Harrison	J N Rector	UNKNOW	Thirty-foot	Storage	2002	PLUGGED	39.149633	-80.359418
12	4703300410	Harrison	E A Waggoner	Eastern Gas Transmission & Storage, Inc.	Hampshire Grp	Storage	1964	ACTIVE	39.148438	-80.357974
13	4703300411	Harrison	W N Dawson CW513	Eastern Gas Transmission & Storage, Inc.	Hampshire Grp	Storage	1920	ACTIVE	39.122627	-80.327748
14	4703300523	Harrison	Lewis C Swisher	Eastern Gas Transmission & Storage, Inc.	Gantz	Storage	1723	ACTIVE	39.143557	-80.335826
15	4703300536	Harrison	M M F Randolph	Eastern Gas Transmission & Storage, Inc.	Benson	Gas	4410	ACTIVE	39.129739	-80.344514
16	4703300546	Harrison	M M F Randolph	Eastern Gas Transmission & Storage, Inc.	Benson	Gas	4260	ACTIVE	39.128982	-80.331615
17	4703300550	Harrison	Lloyd D Swisher	Eastern Gas Transmission & Storage, Inc.	Benson	Dry w/ Gas Show	4320	PLUGGED	39.138747	-80.348299
18	4703300575	Harrison	Sidney Haymond	Eastern Gas Transmission & Storage, Inc.	Benson	Gas	4350	ACTIVE	39.122265	-80.336369
19	4703300577	Harrison	Sidney Cookman	Eastern Gas Transmission & Storage, Inc.	Benson	Gas	4356	ACTIVE	39.122467	-80.345146
20	4703300599	Harrison	Amanda E Smith	Eastern Gas Transmission & Storage, Inc.	Bayard	Gas	2512	ACTIVE	39.115515	-80.334818
21	4703300613	Harrison	Lewis C Swisher	Eastern Gas Transmission & Storage, Inc.	Benson	Gas	4457	ACTIVE	39.137811	-80.336839
22	4703300649	Harrison	G W Swisher	Eastern Gas Transmission & Storage, Inc.	Greenland Gap Fm	Storage	2347	ACTIVE	39.142725	-80.340651
23	4703300656	Harrison	F S Young CW520	Eastern Gas Transmission & Storage, Inc.	Greenland Gap Fm	Storage	1894	PLUGGED	39.135593	-80.333125
24	4703300659	Harrison	S V Curry CW433	Eastern Gas Transmission & Storage, Inc.	Thirty-foot	Storage	1990	ACTIVE	39.149343	-80.352710
25	4703300662	Harrison	L C Swisher CW527	Eastern Gas Transmission & Storage, Inc.	Fifty-foot	Storage	1759	ACTIVE	39.139321	-80.335262
26	4703300667	Harrison	G W Swisher CW525	Eastern Gas Transmission & Storage, Inc.	Hampshire Grp	Storage	1687	PLUGGED	39.137325	-80.333373
27	4703300677	Harrison	D L Nutter	Alliance Petroleum Co. LLC	Thirty-foot	Gas	1850	ABANDONED	39.135023	-80.333850
28	4703300721	Harrison	Harris Hrs CW521	Eastern Gas Transmission & Storage, Inc.	Office of Environmental Protection Plugged Fifty-foot	Storage	1948	PLUGGED	39.155655	-80.342933
29	4703300725	Harrison	W E Ware	Eastern Gas Transmission & Storage, Inc.	Office of Environmental Protection Plugged Fifty-foot	Storage	1985	ACTIVE	39.142666	-80.360350
30	4703300729	Harrison	F Wiant CW522	Eastern Gas Transmission & Storage, Inc.	Office of Environmental Protection Plugged Fifty-foot	Storage	1864	PLUGGED	39.137099	-80.333220
31	4703300764	Harrison	M S Davis CW533	Eastern Gas Transmission & Storage, Inc.	Office of Environmental Protection Plugged Fifty-foot	Storage	2028	PLUGGED	39.153552	-80.339108
32	4703300792	Harrison	L Snyder CW518	Eastern Gas Transmission & Storage, Inc.	Office of Environmental Protection Plugged Fifty-foot	Storage	1824	PLUGGED	39.133088	-80.330236
33	4703300803	Harrison	O Fallman CW430	Eastern Gas Transmission & Storage, Inc.	Office of Environmental Protection Plugged Fifty-foot	Storage	2125	PLUGGED	39.147150	-80.340268
34	4703300845	Harrison	S Haymond CW514	Eastern Gas Transmission & Storage, Inc.	Office of Environmental Protection Plugged Thirty-foot	Storage	2175	ACTIVE	39.124501	-80.339721

10/4/2022

35	4703300849	Harrison	M M F Randolph CW573	Eastern Gas Transmission & Storage, Inc.	Thirty-foot	Storage	2000	ACTIVE	39.12735	-80.330228
36	4703300855	Harrison	Susan V Curry	Eastern Gas Transmission & Storage, Inc.	Thirty-foot	Storage	1877	ACTIVE	39.14204	-80.346345
37	4703300856	Harrison	Susan V Curry CW472	Eastern Gas Transmission & Storage, Inc.	Thirty-foot	Storage	1950	ACTIVE	39.14553	-80.348358
38	4703300860	Harrison	Burgett Swisher CW470	Eastern Gas Transmission & Storage, Inc.	Fifty-foot	Storage	1925	ACTIVE	39.129447	-80.350236
39	4703300882	Harrison	Patricia B Smith	Eastern Gas Transmission & Storage, Inc.	Fifty-foot	Storage	1965	ACTIVE	39.116823	-80.334272
40	4703300922	Harrison	A B Yost	Eastern Gas Transmission & Storage, Inc.	Benson	Gas	4455	ACTIVE	39.154204	-80.350633
41	4703300940	Harrison	Susan Curry	Eastern Gas Transmission & Storage, Inc.	Benson	Gas	4256	ACTIVE	39.142820	-80.345334
42	4703300988	Harrison	Levi B Davis CW431	Eastern Gas Transmission & Storage, Inc.	Fifth	Storage	2137	ACTIVE	39.147749	-80.340351
43	4703300998	Harrison	S G Kennedy CW531	Eastern Gas Transmission & Storage, Inc.	Thirty-foot	Storage	1910	ACTIVE	39.146770	-80.336744
44	4703302262	Harrison	Lloyd D. Swisher	Eastern Gas Transmission & Storage, Inc.	UNKNOWN	Storage	-	ACTIVE	39.137999	-80.349742
45	4703302431	Harrison	J & F Allman	Eastern Gas Transmission & Storage, Inc.	Benson	Gas	4664	ACTIVE	39.134863	-80.346773
46	4703302772	Harrison	J H & C Gerlach	Greylock Conventional, LLC	Benson	Gas	4427	ACTIVE	39.150855	-80.348565
47	4703304387	Harrison	Thomas C Kennedy	Eastern Gas Transmission & Storage, Inc.	Greenland Gap Fm	Gas	4577	ACTIVE	39.110737	-80.327029
48	4703304457	Harrison	Wayne R Lewis	Eastern Gas Transmission & Storage, Inc.	Greenland Gap Fm	Gas	4420	ACTIVE	39.112332	-80.32219
49	4703304576	Harrison	Patricia B/Virginia L Smith	Eastern Gas Transmission & Storage, Inc.	Benson	Gas	4632	ACTIVE	39.115522	-80.327403
50	4703304635	Harrison	Charles R/F Sutton	Eastern Gas Transmission & Storage, Inc.	Greenland Gap Fm	Gas	4660	ACTIVE	39.1265141	-80.3507881
51	4703304642	Harrison	Myrtle B Arobogast	Eastern Gas Transmission & Storage, Inc.	Greenland Gap Fm	Gas	4453	ACTIVE	39.115232	-80.342637
52	4703304661	Harrison	Gloria M Coward	Eastern Gas Transmission & Storage, Inc.	Benson	Gas	4350	ACTIVE	39.118568	-80.346361
53	4703304812	Harrison	Catherine Mauro	Eastern Gas Transmission & Storage, Inc.	Greenland Gap Fm	Gas	4302	ACTIVE	39.112912	-80.338169
54	4703304891	Harrison	Joseph C Queen	Eastern Gas Transmission & Storage, Inc.	not available	not available	-	PLUGGED	39.143411	-80.354188
55	4703331903	Harrison	M M F Randolph	Eastern Gas Transmission & Storage, Inc.	Greenland Gap Fm	Storage	2164	ACTIVE	39.128236	-80.341573
56	4703331904	Harrison	B Swisher CW420	Eastern Gas Transmission & Storage, Inc.	Greenland Gap Fm	Gas	4625	PLUGGED	39.132479	-80.354236
57	4703331905	Harrison	M F Randolph CW422	Eastern Gas Transmission & Storage, Inc.	UNKNOWN	Storage	2182	UNKNOWN	39.130586	-80.340370
58	4703331906	Harrison	F S Young	Eastern Gas Transmission & Storage, Inc.	Gantz	Storage	1910	ACTIVE	39.151283	-80.345552
59	4703331907	Harrison	S Haymond	Consolidated Gas Supply Corp.	Greenland Gap Fm	Storage	2200	PLUGGED	39.120487	-80.338192
60	4703331909	Harrison	S Cookman	Consolidated Gas Supply Corp.	not available	not available	-	PLUGGED	39.121175	-80.345234
61	4703331913	Harrison	M M F Randolph	Eastern Gas Transmission & Storage, Inc.	UNKNOWN	not available	2345	PLUGGED	39.129301	-80.337525
62	4703373940	Harrison	Lloyd D Swisher 1656	UNKNOWN	UNKNOWN	not available	2036	UNKNOWN	39.138091	-80.354883
63	4704102879	Lewis	A S Holbert	Eastern Gas Transmission & Storage, Inc.	UNKNOWN	Storage	2326	ACTIVE	39.113587	-80.345250
64	4704104041	Lewis	Thomas C Kennedy	Eastern Gas Transmission & Storage, Inc.	Greenland Gap Fm	Gas	4465	ACTIVE	39.111027	-80.333333
65	4704104647	Lewis	Thomas C Kennedy	Eastern Gas Transmission & Storage, Inc.	Greenland Gap Fm	Gas	4649	ACTIVE	39.106966	-80.324793
66	4704104789	Lewis	Thomas C Kennedy etal	Eastern Gas Transmission & Storage, Inc.	Misc Sands-BNSN/BRLR	Gas	4452	ACTIVE	39.106241	-80.330563
67	4704130804	Lewis	H J Melton	Consolidated Gas Supply Corp.	Hampshire Grp	not available	2326	PLUGGED	39.112522	-80.345615
68	UNKNOWN 1	Harrison	J.J. Lewis ??	UNKNOWN	UNKNOWN	not available	-	PLUGGED	39.153186	-80.347510
69	UNKNOWN 2	Harrison	Sydney Cookman ??	UNKNOWN	UNKNOWN	not available	-	ABANDONED	39.125542	-80.346132
WELLS ADDED 9/16/2022										
70	4704101928	Lewis	Stella Cummings	Eastern Gas Transmission & Storage, Inc.	Benson	Gas	4463	PLUGGED	39.097336	-80.312407

RECEIVED
 OCT 19 2022
 Office of Oil & Gas
 Department of Environmental Protection

10/10/2022

71	4704103065	Lewis	George Cummings	UNKNOWN	UNKNOWN	not available	-	ABANDONED	39.09987	-80.333173
72	4704103999	Lewis	Eleanor Tenney et al	Petroleum Development Corp.	UNKNOWN	not available	-	PLUGGED	39.09555	-80.318274
73	4704104331	Lewis	Hrhold Linger	Eastern Gas Transmission & Storage, Inc.	Greenland Gap Fm	Gas	2667	ACTIVE	39.09150	-80.319884
74	4704104334	Lewis	Samuel Morrison et al	Eastern Gas Transmission & Storage, Inc.	Greenland Gap Fm	Gas	2541	ACTIVE	39.089420	-80.330060
75	4704104355	Lewis	Gary Taylor	Diversified Production LLC	Greenland Gap Fm	Gas	5160	ACTIVE	39.086092	-80.324192
76	4704104580	Lewis	Timothy D Waugh	Eastern Gas Transmission & Storage, Inc.	Greenland Gap Fm	Gas	4431	ACTIVE	39.098009	-80.338724
77	4704104581	Lewis	Gordon W Moore	Eastern Gas Transmission & Storage, Inc.	Greenland Gap Fm	Gas	4366	ACTIVE	39.09696	-80.333888
78	4704104628	Lewis	George W Dawson	Eastern Gas Transmission & Storage, Inc.	Misc Sands-BNSN/BRLR	Gas	4459	ACTIVE	39.090289	-80.325157
79	4704104630	Lewis	Harold Linger	Eastern Gas Transmission & Storage, Inc.	Misc Sands-BNSN/BRLR	Gas	4673	ACTIVE	39.09406	-80.324042
80	4704104643	Lewis	Gordon W Moore	Eastern Gas Transmission & Storage, Inc.	Misc Sands-BNSN/BRLR	Gas	4641	ACTIVE	39.093236	-80.331338
81	4704104645	Lewis	Gordon W Moore	Eastern Gas Transmission & Storage, Inc.	Greenland Gap Fm	Gas	2742	ACTIVE	39.094694	-80.327878
82	4704104646	Lewis	Thomas C Kennedy	Eastern Gas Transmission & Storage, Inc.	Misc Sands-BNSN/BRLR	Gas	4643	ACTIVE	39.107390	-80.335430
83	4704104658	Lewis	Howard A Mearns	Eastern Gas Transmission & Storage, Inc.	Greenland Gap Fm	Gas	4470	ACTIVE	39.101738	-80.341353
84	4704104768	Lewis	Thomas C Kennedy	Eastern Gas Transmission & Storage, Inc.	Misc Sands-BNSN/BRLR	Gas	4320	ACTIVE	39.110890	-80.341502
85	4704104769	Lewis	Myrtle B Arbogast	Eastern Gas Transmission & Storage, Inc.	Misc Sands-BNSN/BRLR	Gas	4456	ACTIVE	39.106117	-80.342608
86	4704104788	Lewis	Thomas C Kennedy et al	Eastern Gas Transmission & Storage, Inc.	Greenland Gap Fm	Gas	4635	ACTIVE	39.102365	-80.326446
87	4704104792	Lewis	Dorothy J Randolph	Eastern Gas Transmission & Storage, Inc.	Greenland Gap Fm	Gas	4749	ACTIVE	39.102702	-80.321113
88	4704104793	Lewis	Frank E Lewis/N Jackson	Eastern Gas Transmission & Storage, Inc.	Greenland Gap Fm	Gas	4707	ACTIVE	39.107306	-80.319155
89	4704105216	Lewis	George Wesley Dawson	Eastern Gas Transmission & Storage, Inc.	Greenland Gap Fm	Gas	4428	ACTIVE	39.100731	-80.331676
90	4704105217	Lewis	George Wesley Dawson	Eastern Gas Transmission & Storage, Inc.	Greenland Gap Fm	Gas	4686	ACTIVE	39.09812	-80.322556
91	4704130115	Lewis	M E Cookman	Hope Natural Gas Company	Hampshire Grp	Gas	2614	PLUGGED	39.094495	-80.321623
92	4704130290	Lewis	Claudia Blake	Standard Gas Co.	Hampshire Grp	Gas	2450	PLUGGED	39.08845	-80.327404
93	4704130795	Lewis	Geo M Post	Consolidated Gas Supply Corp.	Hampshire Grp	Gas	2446	PLUGGED	39.09135	-80.334074

YELLOW DENOTES WELL WITH TVD > 4,450'

GREEN DENOTES SURVEYED WELLS

SOURCE: WVGES DATASET (2020) and WVDEP WEBSITE AND FIELD SURVEYS

UPDATED 9/16/2022

RECEIVED
Office of Oil & Gas
OCT 19 2022
WV Department of
Environmental Protection

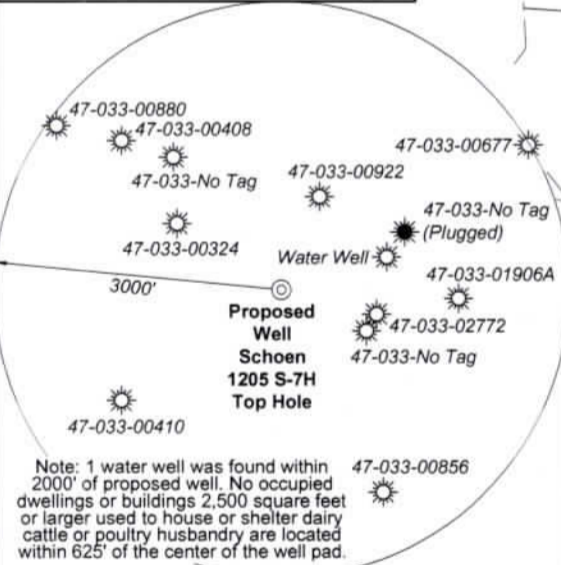
10/12/2022

Notes: Well No. Schoen 1205 S-7H
UTM NAD 1983 (USSF)
Top Hole Coordinates
N: 14,218,476.58'
E: 1,824,100.60'
Landing Point Coordinates
N: 14,217,724.53'
E: 1,822,955.05'
Bottom Hole Coordinates
N: 14,197,270.07'
E: 1,830,681.43'

Notes: Well No. Schoen 1205 S-7H
West Virginia Coordinate System of 1927, North Zone
based upon Differential GPS Measurements.
Top Hole coordinates Bottom Hole coordinates
Latitude: 39°09'05.44" Latitude: 39°05'35.29"
Longitude: 80°21'08.08" Longitude: 80°19'46.51"
UTM Zone 17, NAD 1983
Top Hole Coordinates Bottom Hole Coordinates
N: 4,333,800.329m N: 4,327,336.572m
E: 555,986.975m E: 557,992.816m
Plat orientation and corner and well references are
based upon the grid north meridian. Well location
references are based upon the magnetic meridian.

Legend

- Proposed gas well
- Well Reference, as noted
- Monument, as noted
- Existing Well, as noted
- Existing Plugged Well, as noted
- Digitized Well, as noted
- Creek or Drain
- Existing Road
- Surface boundary (approx.)
- Interior surface tracts (approx.)



Note: 1 water well was found within 2000' of proposed well. No occupied dwellings or buildings 2,500 square feet or larger used to house or shelter dairy cattle or poultry husbandry are located within 625' of the center of the well pad.

Tag	Bearing	Dist.
L1	S 72°38' E	1,517.6'
L2	S 58°19' E	1,280.9'
L3	N 85°48' W	1,221.8'
L4	N 69°22' W	1,002.5'
L5	S 56°43' W	1,370.4'

10,759' to Bottom Hole

5,361' to Top Hole

TOP LATITUDE 39 - 10 - 00
BTM LATITUDE 39 - 07 - 30



BTM LONGITUDE 80 - 17 - 30
TOP LONGITUDE 80 - 20 - 00

5,519' to Top Hole

11,600' to Bottom Hole



I, the undersigned, hereby certify that this plat is correct to the best of my knowledge and belief and shows all the information required by law and the rules issued and prescribed by the Department of Environmental Protection.

Dwayne D. Matheny
Dwayne D. Matheny, P.S. 2070

RECEIVED
Office of Oil & Gas
OCT 19 2022
WV Department of Environmental Protection

FILE NO: 32-36-G-19
DRAWING NO: Schoen 1205 S-7H Well Plat
SCALE: 1" = 2000'
MINIMUM DEGREE OF ACCURACY: Submeter
PROVEN SOURCE OF ELEVATION: CORS, Bridgeport, WV

STATE OF WEST VIRGINIA
DEPARTMENT OF ENVIRONMENTAL PROTECTION
OIL AND GAS DIVISION

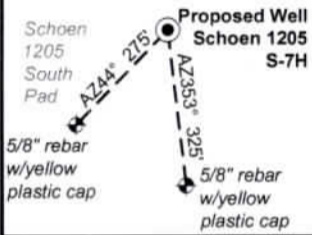
DATE: September 19 2022
OPERATOR'S WELL NO. Schoen 1205 S-7H
API WELL NO
47 - 033 - 05995
STATE COUNTY PERMIT

WELL TYPE: OIL GAS LIQUID INJECTION WASTE DISPOSAL
(IF GAS) PRODUCTION: STORAGE DEEP SHALLOW
LOCATION: ELEVATION: 1,407.3' WATERSHED: Middle West Fork Creek
DISTRICT: Grant / Hackers Creek
SURFACE OWNER: George & Rosanne Schoen
ROYALTY OWNER: Willa Post Robey, et al LEASE NO: ACREAGE: 78.20
PROPOSED WORK: DRILL CONVERT DRILL DEEPER FRACTURE OR STIMULATE PLUG OFF OLD FORMATION
 PERFORATE NEW FORMATION OTHER PHYSICAL CHANGE IN WELL (SPECIFY) BH-MOD 7,230' TVD
 PLUG AND ABANDON CLEAN OUT AND REPLUG TARGET FORMATION: Marcellus Shale ESTIMATED DEPTH: 29,781' MD

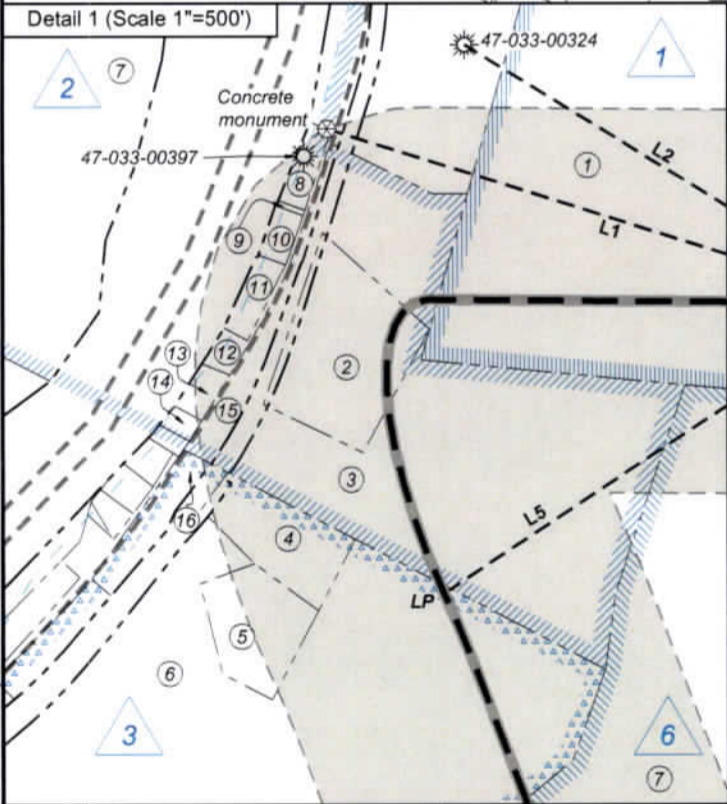
WELL OPERATOR: HG Energy II Appalachia, LLC DESIGNATED AGENT: Diane C. White
ADDRESS: 5260 Dupont Road ADDRESS: 5260 Dupont Road
Parkersburg, WV 26101 Parkersburg, WV 26101



**Well Location References
Not to Scale**



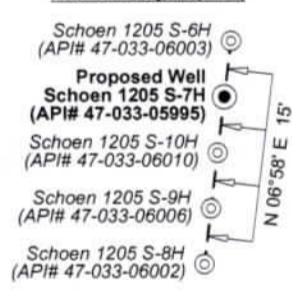
Detail 1 (Scale 1"=500')



Harrison County				
No.	TM / Par	Owner	Bk / Pg	Ac.
1	447 / 2	George & Rosanne Schoen	1148 / 1059	65.00
2	446 / 12	Marilyn Gaines	1192 / 300	2.93
3	446 / 15	Vera E. Oral K. Haught	1582 / 896	14.40
4	446 / 28.5	Robert L. Vanhorn	1352 / 91	1.52
5	446 / 28.4	Bradford Vanhorn	1381 / 1181	1.52
6	446 / 28.2	David D. Vanhorn, et al	W177 / 92	42.66
7	446 / 7	James R. & Sharon L. Allman	1437 / 165	91.97
8	446 / 9	Karen A. Hayes	1397 / 1136	0.33
9	446 / 7.1	Karen A. Hayes	1397 / 1136	0.03
10	446 / 10	Karen A. Hayes	1397 / 1136	0.25
11	446 / 11	Mildred Dean	1060 / 270	0.41
12	446 / 13.1	Mack & Thelma Samples	1578 / 761	0.21
13	446 / 13	Kimberly Vanscoy	1306 / 5	0.27
14	446 / 14	Lisa D. Grogg	1583 / 301	0.14
15	446 / 15.1	David & Grace Hughes	1257 / 694	0.31
16	446 / 28	Larry E. Wilson, II	1344 / 1211	0.57
17	446 / 29	John F. McCuskey II, et al	1121 / 25	75.00
18	446 / 38	Sandra J. Hogsed	1257 / 137	70.16
19	447 / 32	Joseph C. Queen	1349 / 508	36.00
20	447 / 33	Joseph Queen	1349 / 508	20.00
21	447 / 43.1	Joseph C. Queen	1349 / 508	17.16
22	447 / 43	Betty J. & Isaac H. Maxwell III	1543 / 141	123.95
23	467 / 29.1	Charles R. & Franklin L. Sutton	--- / ---	129.61
24	467 / 1	Margaret L. Gyimesi	1306 / 775	78.79
25	467 / 29	Gretna J. Adkins	1207 / 424	8.39
26	467 / 30	William L. Randolph, et ux	1518 / 19	73.73
27	467 / 30.1	Charles R. & Franklin L. Sutton	--- / ---	11.05
28	467 / 33	Charles R. & Franklin L. Sutton	1472 / 181	39.20
29	466 / 49	Charles R. & Franklin L. Sutton	--- / ---	105.17
30	467 / 49.1	Jane E. & Cody R. Ball	1570 / 114	2.08
31	467 / 51	Gary Jedrosko	1561 / 1064	5.76
32	467 / 50	David L. & Celia K. Radcliff	1314 / 1289	6.00
33	467 / 51.2	Gary Jedrosko	1561 / 1064	8.38
34	467 / 51.1	Gary Jedrosko	1561 / 1064	8.87
35	467 / 52	David L. & Lisle C. Hinkle	1282 / 389	175.50
36	487 / 4.2	Catherine A. Mauro	1244 / 135	5.00
37	487 / 3	Myrtle B. Arbogast	W148 / 426	29.17
38	487 / 4.1	Catherine A. Mauro	1244 / 135	95.45
39	487 / 4	Catherine A. Mauro	1244 / 135	4.36
40	447 / 20	Richard & Janet Stout	1175 / 320	51.00

Lewis County				
No.	TM / Par	Owner	Bk / Pg	Ac.
41	10C / 11	Thomas C. Kennedy Testamentary Trust	W34 / 428	92.50
42	10C / 15	Thomas C. Kennedy Testamentary Trust	W34 / 428	107.00
43	10C / 13	George W. & Amy J. Dawson	505 / 549	50.00
44	10C / 12	George W. & Amy J. Dawson	505 / 549	124.00
45	10D / 38	George W. Dawson	542 / 376	9.00
46	10D / 10	George W. & Amy J. Dawson	505 / 549	80.00
47	10D / 9	George W. & Amy J. Dawson	505 / 549	29.00
48	10D / 11	Gordon W. & Judy R. Moore	587 / 485	49.00
49	10D / 19	Gary Taylor	389 / 453	60.20

Wellhead Layout (NTS)



ID	Lease
1	A.B. Post, et al
2	H.D. & Marcella R. Bond, et al
3	Emma A. Waggoner, et al
6	Susan V. Curry, et al
9	L.D. & Addie Swisher
11	P.T. Allman
14	M.M.F. & S.F. Randolph
18	Sidney Cookman, et al
20	Alcinda B. & M.E. Jackson
70	Mary Alkire
84	George & Ella Cummings
85	HG Energy II Appalachia, LLC

FILE NO: 32-36-G-19
DRAWING NO: Schoen 1205 S-7H Well Plat
SCALE: 1" = 2000'
MINIMUM DEGREE OF ACCURACY: Submeter
PROVEN SOURCE OF ELEVATION: CORS, Bridgeport, WV

STATE OF WEST VIRGINIA
DEPARTMENT OF ENVIRONMENTAL PROTECTION
OIL AND GAS DIVISION

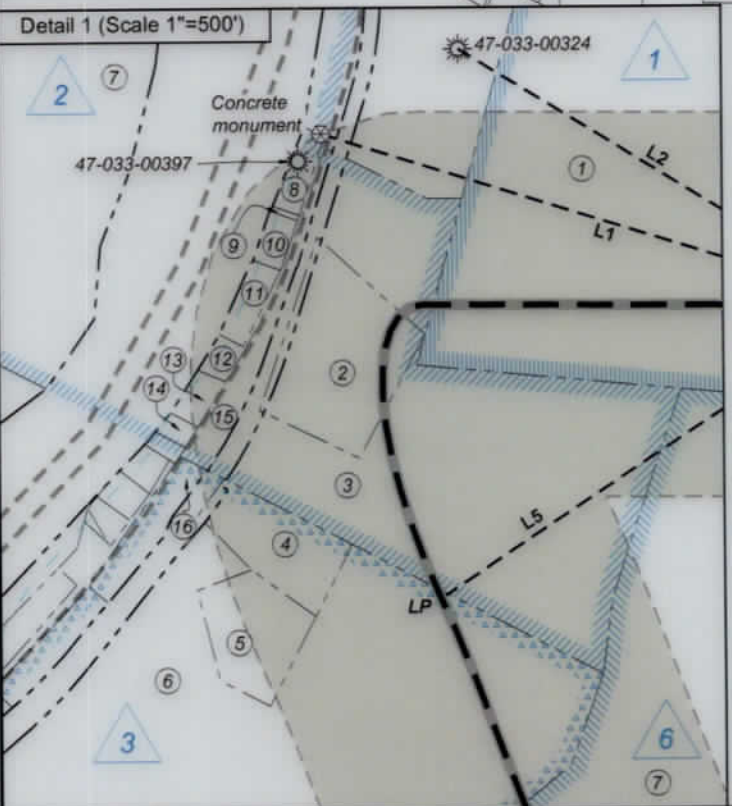
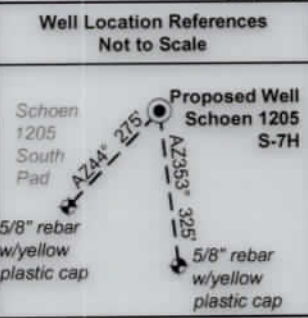
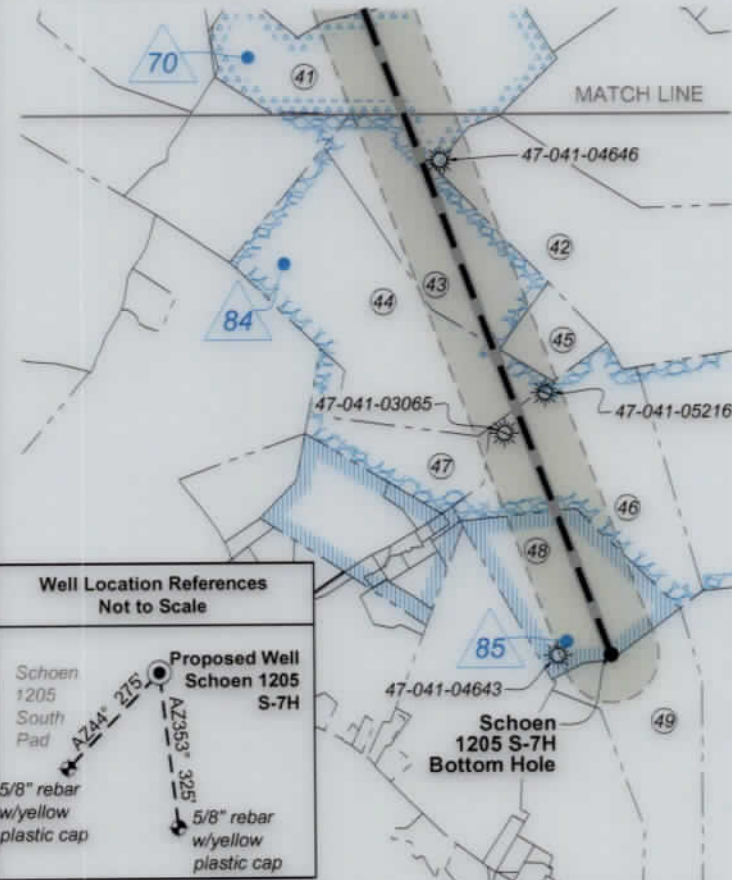
DATE: September 19 2022
OPERATOR'S WELL NO. Schoen 1205 S-7H
API WELL NO
47 - 033 - 05995
STATE COUNTY PERMIT

WELL TYPE: OIL GAS LIQUID INJECTION WASTE DISPOSAL
(IF GAS) PRODUCTION: STORAGE DEEP SHALLOW

LOCATION: ELEVATION: 1,407.3' WATERSHED: Middle West Fork Creek
DISTRICT: Grant / Hackers Creek
SURFACE OWNER: George & Rosanne Schoen
ROYALTY OWNER: Willa Post Robey, et al LEASE NO: ACREAGE: 78.20
PROPOSED WORK: DRILL CONVERT DRILL DEEPER FRACTURE OR STIMULATE PLUG OFF OLD FORMATION
 PERFORATE NEW FORMATION OTHER PHYSICAL CHANGE IN WELL (SPECIFY) BH-MOD
 PLUG AND ABANDON CLEAN OUT AND REPLUG TARGET FORMATION: Marcellus Shale ESTIMATED DEPTH: 7,230' TVD 29,781' MD

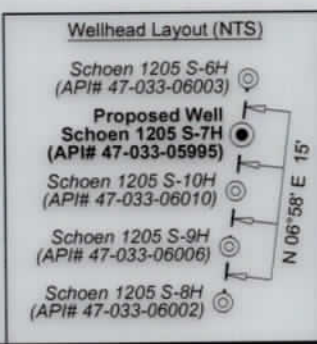
WELL OPERATOR: HG Energy II Appalachia, LLC DESIGNATED AGENT: Diane C. White
ADDRESS: 5260 Dupont Road ADDRESS: 5260 Dupont Road
Parkersburg, WV 26101 Parkersburg, WV 26101

RECEIVED
OCT 19 2022
WV Department of Environmental Protection



Harrison County				
No.	TM / Par	Owner	Bk / Pg	Ac.
1	447 / 2	George & Rosanne Schoen	1148 / 1059	65.00
2	446 / 12	Marilyn Gaines	1192 / 300	2.93
3	446 / 15	Vera E. Oral K. Haught	1582 / 896	14.40
4	446 / 28.5	Robert L. Vanhorn	1352 / 91	1.52
5	446 / 28.4	Bradford Vanhorn	1381 / 1181	1.52
6	446 / 28.2	David D. Vanhorn, et al	W177 / 92	42.66
7	446 / 7	James R. & Sharon L. Allman	1437 / 165	91.97
8	446 / 9	Karen A. Hayes	1397 / 1136	0.33
9	446 / 7.1	Karen A. Hayes	1397 / 1136	0.03
10	446 / 10	Karen A. Hayes	1397 / 1136	0.25
11	446 / 11	Mildred Dean	1060 / 270	0.41
12	446 / 13.1	Mack & Thelma Samples	1578 / 761	0.21
13	446 / 13	Kimberly Vanscoy	1306 / 5	0.27
14	446 / 14	Lisa D. Grogg	1583 / 301	0.14
15	446 / 15.1	David & Grace Hughes	1257 / 694	0.31
16	446 / 28	Larry E. Wilson, II	1344 / 1211	0.57
17	446 / 29	John F. McCuskey II, et al	1121 / 25	75.00
18	446 / 38	Sandra J. Hogsed	1257 / 137	70.16
19	447 / 32	Joseph C. Queen	1349 / 508	36.00
20	447 / 33	Joseph Queen	1349 / 508	20.00
21	447 / 43.1	Joseph C. Queen	1349 / 508	17.16
22	447 / 43	Betty J. & Isaac H. Maxwell III	1543 / 141	123.95
23	467 / 29.1	Charles R. & Franklin L. Sutton	---	129.61
24	467 / 1	Margaret L. Gyimesi	1306 / 775	78.79
25	467 / 29	Gretna J. Adkins	1207 / 424	8.39
26	467 / 30	William L. Randolph, et ux	1518 / 19	73.73
27	467 / 30.1	Charles R. & Franklin L. Sutton	---	11.05
28	467 / 33	Charles R. & Franklin L. Sutton	1472 / 181	39.20
29	466 / 49	Charles R. & Franklin L. Sutton	---	105.17
30	467 / 49.1	Jane E. & Cody R. Ball	1570 / 114	2.08
31	467 / 51	Gary Jedrosko	1561 / 1064	5.76
32	467 / 50	David L. & Celia K. Radcliff	1314 / 1289	6.00
33	467 / 51.2	Gary Jedrosko	1561 / 1064	8.38
34	467 / 51.1	Gary Jedrosko	1561 / 1064	8.87
35	467 / 52	David L. & Lisle C. Hinkle	1282 / 389	175.50
36	487 / 4.2	Catherine A. Mauro	1244 / 135	5.00
37	487 / 3	Myrtle B. Arbogast	W148 / 426	29.17
38	487 / 4.1	Catherine A. Mauro	1244 / 135	95.45
39	487 / 4	Catherine A. Mauro	1244 / 135	4.36
40	447 / 20	Richard & Janet Stout	1175 / 320	51.00

Lewis County				
No.	TM / Par	Owner	Bk / Pg	Ac.
41	10C / 11	Thomas C. Kennedy Testamentary Trust	W34 / 428	92.50
42	10C / 15	Thomas C. Kennedy Testamentary Trust	W34 / 428	107.00
43	10C / 13	George W. & Amy J. Dawson	505 / 549	50.00
44	10C / 12	George W. & Amy J. Dawson	505 / 549	124.00
45	10D / 38	George W. Dawson	542 / 376	9.00
46	10D / 10	George W. & Amy J. Dawson	505 / 549	80.00
47	10D / 9	George W. & Amy J. Dawson	505 / 549	29.00
48	10D / 11	Gordon W. & Judy R. Moore	597 / 485	49.00
49	10D / 19	Gary Taylor	369 / 453	60.20



ID	Lease
1	A.B. Post, et al
2	H.D. & Marcella R. Bond, et al
3	Emma A. Waggoner, et al
6	Susan V. Curry, et al
9	L.D. & Addie Swisher
11	P.T. Allman
14	M.M.F. & S.F. Randolph
18	Sidney Cookman, et al
20	Alcinda B. & M.E. Jackson
70	Mary Alkire
84	George & Ella Cummings
85	HG Energy II Appalachia, LLC

FILE NO: 32-36-G-19
DRAWING NO: Schoen 1205 S-7H Well Plat
SCALE: 1" = 2000'
MINIMUM DEGREE OF ACCURACY: Submeter
PROVEN SOURCE OF ELEVATION: CORS, Bridgeport, WV

STATE OF WEST VIRGINIA
DEPARTMENT OF ENVIRONMENTAL PROTECTION
OIL AND GAS DIVISION

DATE: September 19 2022
OPERATOR'S WELL NO. Schoen 1205 S-7H
API WELL NO
47 - 033 - 05995
STATE COUNTY PERMIT

WELL TYPE: OIL GAS LIQUID INJECTION WASTE DISPOSAL
(IF GAS) PRODUCTION: STORAGE DEEP SHALLOW

LOCATION: ELEVATION: 1,407.3' WATERSHED: Middle West Fork Creek
DISTRICT: Grant / Hackers Creek
SURFACE OWNER: George & Rosanne Schoen
ROYALTY OWNER: Willa Post Robey, et al LEASE NO: _____ ACREAGE: 78.20

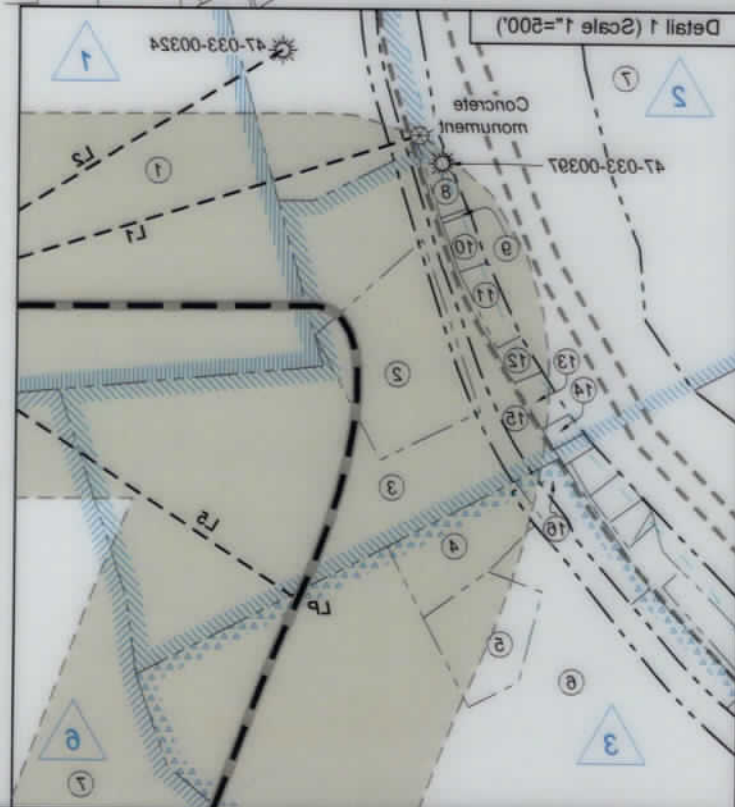
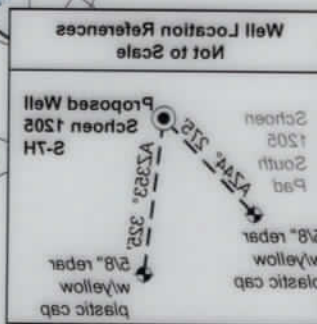
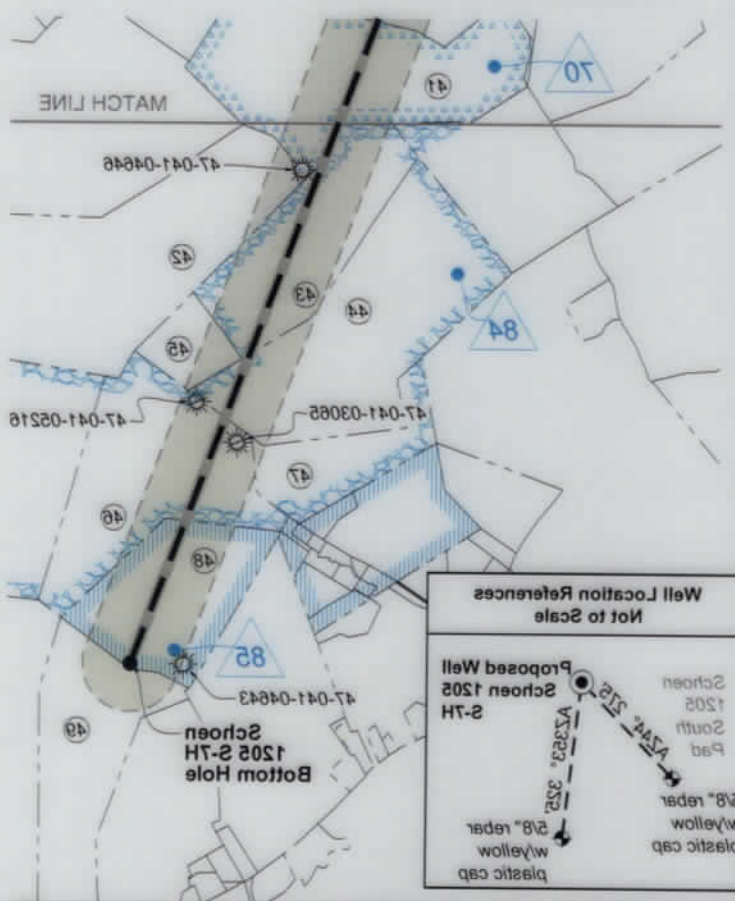
PROPOSED WORK: DRILL CONVERT DRILL DEEPER FRACTURE OR STIMULATE PLUG OFF OLD FORMATION
 PERFORATE NEW FORMATION OTHER PHYSICAL CHANGE IN WELL (SPECIFY) BH-MOD 7,230' TVD
 PLUG AND ABANDON CLEAN OUT AND REPLUG TARGET FORMATION: Marcellus Shale ESTIMATED DEPTH: 29,781' MD

WELL OPERATOR: HG Energy II Appalachia, LLC DESIGNATED AGENT: Diane C. White
ADDRESS: 5260 Dupont Road ADDRESS: 5260 Dupont Road
Parkersburg, WV 26101 Parkersburg, WV 26101

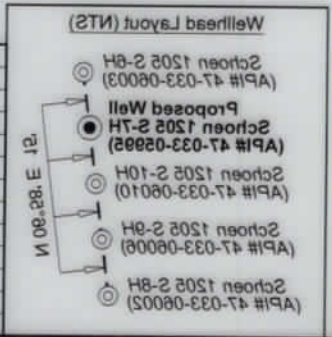
11/04/2022



No.	TM \ Par	Owner	Bk \ Pg	Ac.
49	10D \ 19	Gary Taylor	389 \ 453	80.50
48	10D \ 17	Gordon W. & Judy R. Moore	593 \ 485	49.00
47	10D \ 9	George W. & Amy J. Dawson	505 \ 549	29.00
46	10D \ 10	George W. & Amy J. Dawson	505 \ 549	80.00
45	10D \ 38	George W. Dawson	542 \ 378	9.00
44	10C \ 12	George W. & Amy J. Dawson	505 \ 549	124.00
43	10C \ 13	George W. & Amy J. Dawson	505 \ 549	50.00
42	10C \ 15	Testamentary Trust	W34 \ 458	107.00
41	10C \ 11	Testamentary Trust	W34 \ 458	92.50
Lewis County				
Owner				
Bk \ Pg				
Ac.				
40	447 \ 20	Richard & Janet Stout	1175 \ 350	51.00
39	487 \ 4	Catherine A. Marro	1244 \ 135	4.38
38	487 \ 4.1	Catherine A. Marro	1244 \ 135	4.38
37	487 \ 3	Myrtle B. Ardopast	W148 \ 426	29.17
36	487 \ 4.2	Catherine A. Marro	1244 \ 135	5.00
35	487 \ 52	David L. & Lale C. Hinkle	1282 \ 389	175.50
34	487 \ 51.1	Gary Jedrosko	1581 \ 1084	8.87
33	487 \ 51.2	Gary Jedrosko	1581 \ 1084	8.38
32	487 \ 50	David L. & Celis K. Radloff	1314 \ 1289	6.00
31	487 \ 51	Gary Jedrosko	1581 \ 1084	5.78
30	487 \ 49.1	Jane E. & Cody R. Ball	1570 \ 114	2.08
29	487 \ 49	Charles R. & Franklin L. Sutton	1472 \ 181	105.17
28	487 \ 33	Charles R. & Franklin L. Sutton	1472 \ 181	39.50
27	487 \ 30.1	Charles R. & Franklin L. Sutton	1472 \ 181	11.05
26	487 \ 30	William L. Randolph, et ux	1518 \ 19	73.73
25	487 \ 29	Grina J. Abkins	1207 \ 424	8.39
24	487 \ 1	Margaret L. Gyimesi	1308 \ 725	78.79
23	487 \ 29.1	Charles R. & Franklin L. Sutton	1543 \ 141	123.89
22	447 \ 43	Betty J. & Isaac H. Maxwell III	1543 \ 141	123.89
21	447 \ 43.1	Joseph C. Queen	1349 \ 508	17.18
20	447 \ 33	Joseph Queen	1349 \ 508	20.00
19	447 \ 32	Joseph C. Queen	1349 \ 508	38.00
18	448 \ 38	Sandra J. Hogood	1257 \ 137	20.18
17	448 \ 29	John F. McCuskey II, et al	1121 \ 25	25.00
16	448 \ 28	Larry E. Wilson, II	1344 \ 1211	0.57
15	448 \ 15.1	David & Grace Hughes	1257 \ 894	0.31
14	448 \ 14	Lisa D. Gregg	1583 \ 301	0.14
13	448 \ 13	Kimberly Vancovy	1308 \ 5	0.27
12	448 \ 13.1	Mack & Thelma Samples	1578 \ 751	0.21
11	448 \ 11	Mildred Dean	1080 \ 270	0.41
10	448 \ 10	Karen A. Hayes	1397 \ 1138	0.25
9	448 \ 7.1	Karen A. Hayes	1397 \ 1138	0.03
8	448 \ 9	Karen A. Hayes	1397 \ 1138	0.03
7	448 \ 7	James R. & Sharon L. Allman	1437 \ 185	91.97
6	448 \ 28.2	David D. Vanhorn, et al	W177 \ 92	42.88
5	448 \ 28.4	Bradford Vanhorn	1381 \ 1181	1.52
4	448 \ 28.5	Robert L. Vanhorn	1382 \ 91	1.52
3	448 \ 15	Vera E. Oral K. Handrl	1282 \ 888	14.40
2	448 \ 12	Manlynn Gaines	1192 \ 300	2.93
1	447 \ 2	George & Rosanne Schoen	1148 \ 1058	85.00



ID	Lease
88	HG Energy II Appalachia, LLC
84	George & Elia Cummings
70	Mary Aikie
50	Alicia B. & M.E. Jackson
18	Sibney Cookman, et al
14	M.M.F. & S.F. Randolph
11	P.T. Allman
9	L.D. & Adie Swisher
6	Susan V. Curtz, et al
3	Emma A. Waggoner, et al
2	H.D. & Marcella R. Bond, et al
1	A.B. Post, et al



STATE OF WEST VIRGINIA
DEPARTMENT OF ENVIRONMENTAL PROTECTION
OIL AND GAS DIVISION

FILE NO.: 32-36-G-19
DRAWING NO.: Schoen 1205 2-7H Well Plat
SCALE: 1" = 500'
MINIMUM DEGREE OF ACCURACY:
Submeter
PROVEN SOURCE OF ELEVATION:
COR. Bridgeport, WV

ROYALTY OWNER: Wills Post Robey, et al
SURFACE OWNER: George & Rosanne Schoen
DATE: September 19 2022

APPROVED BY: _____
DATE: _____

DESIGNATED AGENT: Diane C. White
ADDRESS: 5260 Dupont Road
Parkerburg, WV 26101

WELL OPERATOR: HG Energy II Appalachia, LLC
ADDRESS: 5260 Dupont Road
Parkerburg, WV 26101

PROPOSED WORK: DRILL CONVERT DRILL DEEPER FRACTURE OR STIMULATE PLUG OFF OLD FORMATION
 PERFORATE NEW FORMATION OTHER PHYSICAL CHANGE IN WELL (SPECIFY) BH-MOD
7.230' TVD

WELL TYPE: OIL GAS LIQUID INJECTION WASTE DISPOSAL
(IF GAS) PRODUCTION: STORAGE DEEP SHALLOW

LOCATION: ELEVATION: 1402.3' WATERSHED: Middle West Fork Creek
DUPONT / Hackers Creek

COUNTY: Harrison \ Lewis
QUADRANGLE: Btm: Behlin
Top: Mount Clare

ACREAGE: 78.20
ACREAGE: 65.00

LEASE NO.: _____
ROYALTY OWNER: _____
SURFACE OWNER: _____

APPROVED BY: _____
DATE: _____

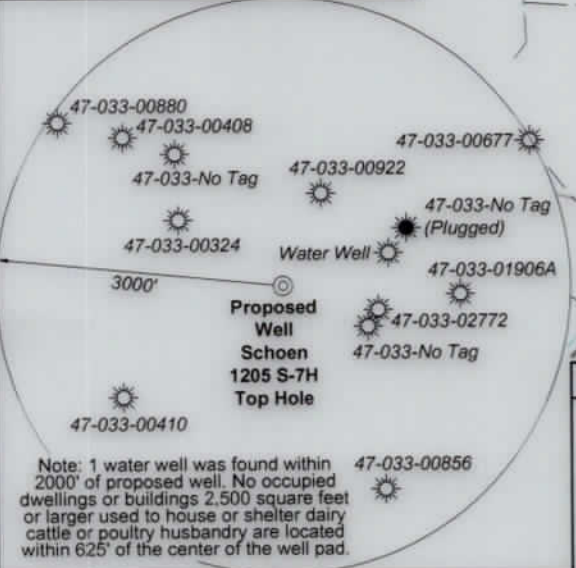
DESIGNATED AGENT: Diane C. White
ADDRESS: 5260 Dupont Road
Parkerburg, WV 26101

WELL OPERATOR: HG Energy II Appalachia, LLC
ADDRESS: 5260 Dupont Road
Parkerburg, WV 26101

Notes: Well No. Schoen 1205 S-7H
UTM NAD 1983 (USSF)
Top Hole Coordinates
N: 14,218,476.58'
E: 1,824,100.60'
Landing Point Coordinates
N: 14,217,724.53'
E: 1,822,955.05'
Bottom Hole Coordinates
N: 14,197,270.07'
E: 1,830,681.43'

Notes: Well No. Schoen 1205 S-7H
West Virginia Coordinate System of 1927, North Zone
based upon Differential GPS Measurements.
Top Hole coordinates Latitude: 39°09'05.44" Longitude: 80°21'08.08" UTM Zone 17, NAD 1983
Bottom Hole coordinates Latitude: 39°05'35.29" Longitude: 80°19'46.51" UTM Zone 17, NAD 1983
Top Hole Coordinates N: 4,333,800.329m E: 555,986.975m
Bottom Hole Coordinates N: 4,327,336.572m E: 557,992.816m
Plat orientation and corner and well references are based upon the grid north meridian. Well location references are based upon the magnetic meridian.

- Legend**
- Proposed gas well
 - ⊕ Well Reference, as noted
 - ⊙ Monument, as noted
 - ☀ Existing Well, as noted
 - ☀ Existing Plugged Well, as noted
 - ☀ Digitized Well, as noted
 - Creek or Drain
 - Existing Road
 - Surface boundary (approx.)
 - Interior surface tracts (approx.)



Tag	Bearing	Dist.
L1	S 72°38' E	1,517.6'
L2	S 58°19' E	1,280.9'
L3	N 85°48' W	1,221.8'
L4	N 69°22' W	1,002.5'
L5	S 56°43' W	1,370.4'

10,759' to Bottom Hole

5,361' to Top Hole

TOP LATITUDE 39 - 10 - 00
BTM LATITUDE 39 - 07 - 30

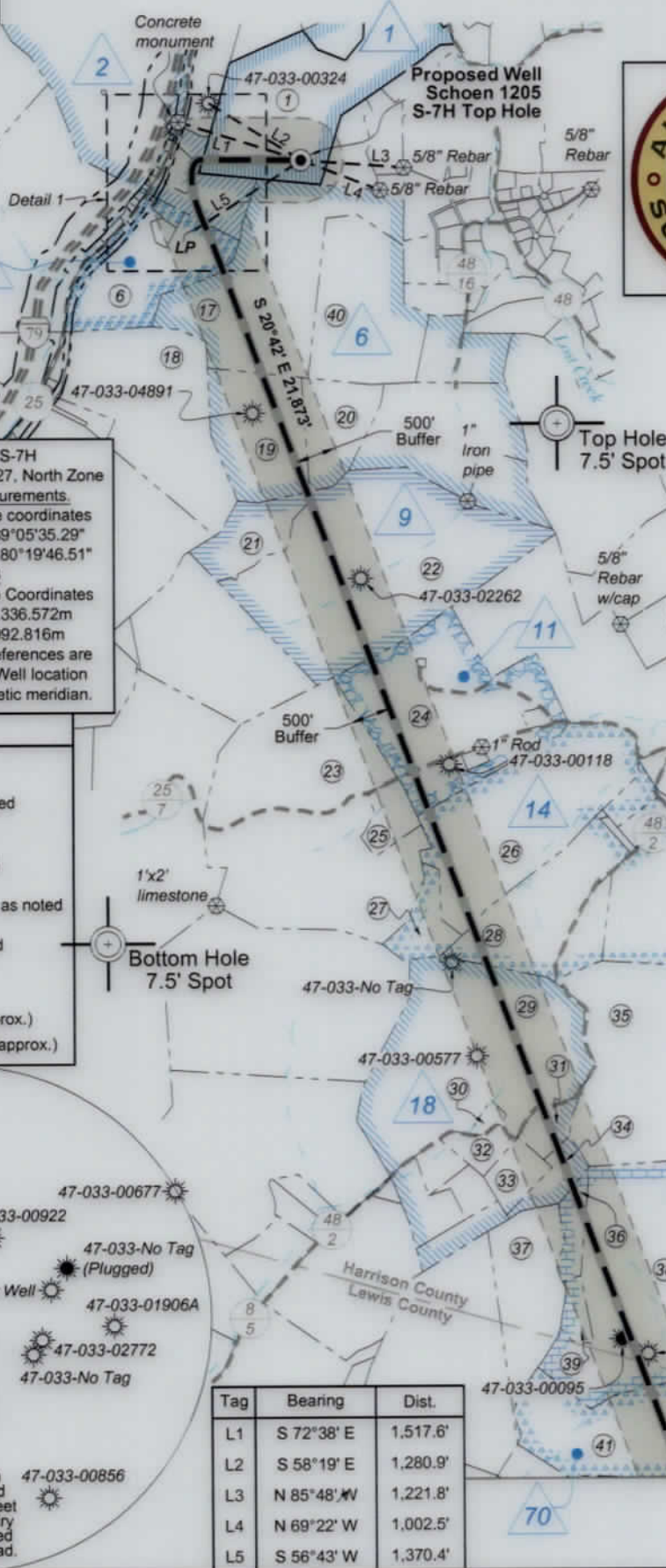


BTM LONGITUDE 80 - 17 - 30
TOP LONGITUDE 80 - 20 - 00

5,519' to Top Hole

11,600' to Bottom Hole

GRID NORTH



I, the undersigned, hereby certify that this plat is correct to the best of my knowledge and belief and shows all the information required by law and the rules issued and prescribed by the Department of Environmental Protection.

Dwayne D. Matheny
Dwayne D. Matheny, P.S. 2070

FILE NO: 32-36-G-19
DRAWING NO: Schoen 1205 S-7H Well Plat
SCALE: 1" = 2000'
MINIMUM DEGREE OF ACCURACY: Submeter
PROVEN SOURCE OF ELEVATION: CORS, Bridgeport, WV

STATE OF WEST VIRGINIA
DEPARTMENT OF ENVIRONMENTAL PROTECTION
OIL AND GAS DIVISION

DATE: September 19 2022
OPERATOR'S WELL NO. Schoen 1205 S-7H
API WELL NO
47 - 033 - 05995
STATE COUNTY PERMIT

WELL TYPE: OIL GAS LIQUID INJECTION WASTE DISPOSAL
(IF GAS) PRODUCTION: STORAGE DEEP SHALLOW

LOCATION: ELEVATION: 1,407.3' WATERSHED: Middle West Fork Creek
DISTRICT: Grant / Hackers Creek
SURFACE OWNER: George & Rosanne Schoen
ROYALTY OWNER: Willa Post Robey, et al LEASE NO: ACREAGE: 78.20

PROPOSED WORK: DRILL CONVERT DRILL DEEPER FRACTURE OR STIMULATE PLUG OFF OLD FORMATION
 PERFORATE NEW FORMATION OTHER PHYSICAL CHANGE IN WELL (SPECIFY) BH-MOD 7.230' TVD
 PLUG AND ABANDON CLEAN OUT AND REPLUG TARGET FORMATION: Marcellus Shale ESTIMATED DEPTH: 29,781' MD

WELL OPERATOR: HG Energy II Appalachia, LLC ADDRESS: 5260 Dupont Road Parkersburg, WV 26101
DESIGNATED AGENT: Diane C. White ADDRESS: 5260 Dupont Road Parkersburg, WV 26101

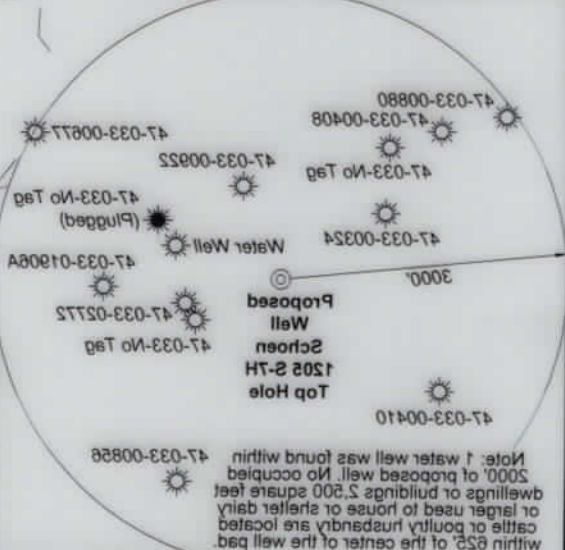
11/04/2022

Notes: Well No. Schoen 1205 2-7H UTM NAD 1983 (USZF) Top Hole Coordinates N: 14,218,478.58' E: 1,824,100.60' Landing Point Coordinates N: 14,217,724.53' E: 1,822,885.05' Bottom Hole Coordinates N: 14,197,270.07' E: 1,830,681.43'

Notes: Well No. Schoen 1205 2-7H West Virginia Coordinate System of 1927, North Zone based upon Differential GPS Measurements. Top Hole coordinates Bottom Hole coordinates Longitude: 80°21'08.08" Latitude: 39°09'02.44" UTM Zone 17, NAD 1983 N: 4,323,800.325m E: 525,988.975m Bottom Hole Coordinates N: 4,327,338.525m E: 527,992.816m Plat orientation and corner and well references are based upon the grid north meridian. Well location references are based upon the magnetic meridian.

Legend

- Proposed gas well
- Well Reference, as noted
- Monument, as noted
- Existing Well, as noted
- Existing Plugged Well, as noted
- Digitized Well, as noted
- Creek or Drain
- Existing Road
- Surface boundary (approx.)
- Interior surface tracts (approx.)



Tag	Bearing	Dist.
L1	S 72°38' E	1,517.8'
L2	S 58°19' E	1,280.9'
L3	N 85°48' W	1,521.8'
L4	N 69°52' W	1,002.5'
L5	S 58°43' W	1,370.4'

10,759' to Bottom Hole
 2,361' to Top Hole
 TOP LATITUDE 39 - 10 - 00
 BTM LATITUDE 39 - 07 - 30
 TOP LONGITUDE 80 - 30 - 00
 BTM LONGITUDE 80 - 11 - 30



I, the undersigned, hereby certify that this plat is correct to the best of my knowledge and belief and shows all the information required by law and the rules issued and prescribed by the Department of Environmental Protection.

Dwayne D. Matheny, P.S. 2070

11,000' to Bottom Hole

STATE OF WEST VIRGINIA
 DEPARTMENT OF ENVIRONMENTAL PROTECTION
 OIL AND GAS DIVISION

FILE NO: 32-36-G-19
 DRAWING NO: Schoen 1205 2-7H Well Plat
 SCALE: 1" = 2000'
 MINIMUM DEGREE OF ACCURACY: Submeter
 PROVEN SOURCE OF ELEVATION: CORS, Bridgeport, WV

WELL TYPE: OIL GAS LIQUID INJECTION WASTE DISPOSAL
 (IF GAS) PRODUCTION: STORAGE DEEP SHALLOW

LOCATION: ELEVATION: 1,407.3'. WATERSHED: Middle West Fork Creek
 DRAINAGE: Hackers Creek

SURFACE OWNER: George & Rosanne Schoen
 ROYALTY OWNER: Willis Post Robey, et al

PROPOSED WORK: DRILL CONVERT DRILL DEEPER FRACTURE OR STIMULATE PLUG OFF OLD FORMATION
 PERFORATE NEW FORMATION OTHER PHYSICAL CHANGE IN WELL (SPECIFY) BH-MOD

PLUG AND ABANDON CLEAN OUT AND REPLUG TARGET FORMATION: Marcellus Shale ESTIMATED DEPTH: 29,787. MD
 7,230' TVD

LEASE NO: _____ ACREAGE: 78.20
 COUNTY: Harrison \ Lewis
 QUADRANGLE: Btm: Behin
 Top: Mount Clare

DESIGNATED AGENT: Diane C. White
 ADDRESS: 5280 Dupont Road
 Parkersburg, WV 26101

DATE: September 19 2022
 OPERATORS WELL NO: Schoen 1205 2-7H
 API WELL NO
 STATE COUNTY PERMIT

11/04/2022

2	LC066976	Q100894000	NOBLE ENERGY, INC.	HG ENERGY II APPALACHIA, LLC	ASSIGNMENT	1600	692
			DOMINION TRANSMISSION, INC.	DOMINION ENERGY TRANSMISSION, INC.	MERGER/NAME CHANGE	WVSOS	
3	LC066702	Q101137000	DOMINION ENERGY TRANSMISSION, INC.	HG ENERGY II APPALACHIA, LLC	SECOND AMENDMENT TO MEMORANDUM OF FARMOUT AGREEMENT	1601	581
			DOMINION ENERGY TRANSMISSION, INC.	HG ENERGY II APPALACHIA, LLC	THIRD AMENDMENT TO MEMORANDUM OF FARMOUT AGREEMENT	1621	1295
			EMMA A. WAGGONER, WIDOW; W. A. WAGGONER AND MINNIE WAGGONER, HIS WIFE; AND W. GEORGE WAGGONER AND VIRGINIA WAGGONER, HIS WIFE	HOPE NATURAL GAS COMPANY	NOT LESS THAN 1/8	777	396
			HOPE NATURAL GAS COMPANY	CONSOLIDATED GAS SUPPLY CORPORATION	CONFIRMATORY DEED	903	179
			CONSOLIDATED GAS SUPPLY CORPORATION	CONSOLIDATED GAS TRANSMISSION CORPORATION	ASSIGNMENT	1136	250
			CNG TRANSMISSION CORPORATION	DOMINION TRANSMISSION, INC.	MERGER/NAME CHANGE	51	795
			DOMINION TRANSMISSION, INC.	CNX GAS COMPANY LLC	MEMORANDUM FARMOUT AGREEMENT	58	362
			CNX GAS COMPANY LLC	NOBLE ENERGY, INC.	LIMITED PARTIAL ASSIGNMENT (50%)	1522	33
			DOMINION TRANSMISSION, INC.	CNX GAS COMPANY LLC AND NOBLE ENERGY, INC.	PARTIAL ASSIGNMENT (32%)	1543	1235
			CNX GAS COMPANY LLC	NOBLE ENERGY, INC.	ASSIGNMENT	1576	125
			DOMINION TRANSMISSION, INC.	DOMINION ENERGY TRANSMISSION, INC.	MERGER/NAME CHANGE	1584	942
			NOBLE ENERGY, INC.	HG ENERGY II APPALACHIA, LLC	ASSIGNMENT	WVSOS	
			DOMINION ENERGY TRANSMISSION, INC.	HG ENERGY II APPALACHIA, LLC	ASSIGNMENT	1600	692
			DOMINION ENERGY TRANSMISSION, INC.	HG ENERGY II APPALACHIA, LLC	SECOND AMENDMENT TO MEMORANDUM OF FARMOUT AGREEMENT	1601	581
			SUSAN V. CURRY, SINGLE; AND IDA M. CURRY, SINGLE	HG ENERGY II APPALACHIA, LLC	THIRD AMENDMENT TO MEMORANDUM OF FARMOUT AGREEMENT	1621	1295
			HOPE NATURAL GAS COMPANY	HOPE NATURAL GAS COMPANY	ASSIGNMENT (68%)	1637	1081
			CONSOLIDATED GAS SUPPLY CORPORATION	CONSOLIDATED GAS SUPPLY CORPORATION	NOT LESS THAN 1/8	193	265
CONSOLIDATED GAS SUPPLY CORPORATION	CONSOLIDATED GAS TRANSMISSION CORPORATION	CONFIRMATORY DEED	903	179			
CNG TRANSMISSION CORPORATION	CNG TRANSMISSION CORPORATION	ASSIGNMENT	1136	250			
DOMINION TRANSMISSION, INC.	DOMINION TRANSMISSION, INC.	MERGER/NAME CHANGE	51	795			
CNX GAS COMPANY LLC	CNX GAS COMPANY LLC	MERGER/NAME CHANGE	58	362			
NOBLE ENERGY, INC.	NOBLE ENERGY, INC.	MEMORANDUM FARMOUT AGREEMENT	1522	33			
			1543	1235			
			1543	1235			

RECEIVED
Office of Oil & Gas
OCT 19 2022
MW Department of
Environmental Protection

11/04/2022

6	LC098171 FEE, LC020404	12-0447-0032-0000 12-0447-0033-0000 12-0447-0034-0000 12-0447-0035-0000	Q100631000 LC098171 FEE	DOMINION TRANSMISSION, INC.	CNX GAS COMPANY LLC AND NOBLE ENERGY, INC.	ASSIGNMENT	1576	125
				CNX GAS COMPANY LLC	NOBLE ENERGY, INC.	ASSIGNMENT	1584	942
				NOBLE ENERGY, INC.	HG ENERGY II APPALACHIA, LLC	ASSIGNMENT	1600	692
				DOMINION TRANSMISSION, INC.	DOMINION ENERGY TRANSMISSION, INC.	MERGER/NAME CHANGE	WWSOS	
				DOMINION ENERGY TRANSMISSION, INC.	HG ENERGY II APPALACHIA, LLC	SECOND AMENDMENT TO MEMORANDUM OF FARMOUT AGREEMENT	1601	581
				DOMINION ENERGY TRANSMISSION, INC.	HG ENERGY II APPALACHIA, LLC	THIRD AMENDMENT TO MEMORANDUM OF FARMOUT AGREEMENT	1621	1295
				DOMINION ENERGY TRANSMISSION, INC.	HG ENERGY II APPALACHIA, LLC	FARMOUT AGREEMENT (68%)	1637	1081
				L. D. SWISHER AND ADDIE SWISHER, HIS WIFE	HOPE NATURAL GAS COMPANY	NOT LESS THAN 1/8	152	254
				HOPE NATURAL GAS COMPANY	CONSOLIDATED GAS SUPPLY CORPORATION	CONFIRMATORY DEED	903	179
				CONSOLIDATED GAS SUPPLY CORPORATION	CONSOLIDATED GAS TRANSMISSION CORPORATION	ASSIGNMENT	1136	250
				CONSOLIDATED GAS TRANSMISSION CORPORATION	CNG TRANSMISSION CORPORATION	MERGER/NAME CHANGE	51	795
CNG TRANSMISSION CORPORATION	DOMINION TRANSMISSION, INC.	MERGER/NAME CHANGE	58	362				
DOMINION TRANSMISSION, INC.	CNX GAS COMPANY LLC	MEMORANDUM FARMOUT AGREEMENT	1522	33				
9	LC005124	12-0447-0043-0000 12-0447-0043-0001	LC005124	DOMINION ENERGY TRANSMISSION, INC.	CNX GAS COMPANY LLC	FIRST AMENDMENT TO MEMORANDUM OF FARMOUT AGREEMENT	1524	491
				CNX GAS COMPANY LLC	NOBLE ENERGY, INC.	LIMITED PARTIAL ASSIGNMENT (50%)	1543	1235
				DOMINION TRANSMISSION, INC.	CNX GAS COMPANY LLC AND NOBLE ENERGY, INC.	PARTIAL ASSIGNMENT (32%)	1576	125
				CNX GAS COMPANY LLC	NOBLE ENERGY, INC.	ASSIGNMENT	1584	942
				DOMINION TRANSMISSION, INC.	DOMINION ENERGY TRANSMISSION, INC.	MERGER/NAME CHANGE	WWSOS	
				DOMINION ENERGY TRANSMISSION, INC.	HG ENERGY II APPALACHIA, LLC	SECOND AMENDMENT TO MEMORANDUM OF FARMOUT AGREEMENT	1601	581
				DOMINION ENERGY TRANSMISSION, INC.	HG ENERGY II APPALACHIA, LLC	THIRD AMENDMENT TO MEMORANDUM OF FARMOUT AGREEMENT	1621	1295
				DOMINION ENERGY TRANSMISSION, INC.	HG ENERGY II APPALACHIA, LLC	FARMOUT AGREEMENT (68%)	1637	1081
				P. T. ALTMAN	HOPE NATURAL GAS COMPANY	NOT LESS THAN 1/8	193	281
				HOPE NATURAL GAS COMPANY	CONSOLIDATED GAS SUPPLY CORPORATION	CONFIRMATORY DEED	903	179
				CONSOLIDATED GAS SUPPLY CORPORATION	CONSOLIDATED GAS TRANSMISSION CORPORATION	ASSIGNMENT	1136	250
CNG TRANSMISSION CORPORATION	CNG TRANSMISSION CORPORATION	MERGER/NAME CHANGE	51	795				
DOMINION TRANSMISSION, INC.	DOMINION TRANSMISSION, INC.	MERGER/NAME CHANGE	58	362				
DOMINION TRANSMISSION, INC.	CNX GAS COMPANY LLC	MEMORANDUM FARMOUT AGREEMENT	1522	33				
11	LC020456	12-0467-0001-0000 12-0467-0001-0001 12-0467-0001-0002 12-0467-0001-0003	Q100320000	DOMINION TRANSMISSION, INC.	CNX GAS COMPANY LLC	FIRST AMENDMENT TO MEMORANDUM OF FARMOUT AGREEMENT	1524	491
				CNX GAS COMPANY LLC	NOBLE ENERGY, INC.	LIMITED PARTIAL ASSIGNMENT (50%)	1543	1235
				DOMINION TRANSMISSION, INC.	CNX GAS COMPANY LLC AND NOBLE ENERGY, INC.	PARTIAL ASSIGNMENT (32%)	1576	125
				CNX GAS COMPANY LLC	NOBLE ENERGY, INC.	ASSIGNMENT	1584	942
				DOMINION TRANSMISSION, INC.	HG ENERGY II APPALACHIA, LLC	ASSIGNMENT	1600	692
				DOMINION ENERGY TRANSMISSION, INC.	DOMINION ENERGY TRANSMISSION, INC.	MERGER/NAME CHANGE	WWSOS	
				DOMINION ENERGY TRANSMISSION, INC.	HG ENERGY II APPALACHIA, LLC	SECOND AMENDMENT TO MEMORANDUM OF FARMOUT AGREEMENT	1601	581
				DOMINION ENERGY TRANSMISSION, INC.	HG ENERGY II APPALACHIA, LLC	THIRD AMENDMENT TO MEMORANDUM OF FARMOUT AGREEMENT	1621	1295
				DOMINION ENERGY TRANSMISSION, INC.	HG ENERGY II APPALACHIA, LLC	FARMOUT AGREEMENT (68%)	1637	1081
				M.M.F. RANDOLPH AND S. F. RANDOLPH, HUSBAND AND WIFE	HOPE NATURAL GAS COMPANY	NOT LESS THAN 1/8	152	262
				HOPE NATURAL GAS COMPANY	CONSOLIDATED GAS SUPPLY CORPORATION	CONFIRMATORY DEED	903	179
CONSOLIDATED GAS SUPPLY CORPORATION	CONSOLIDATED GAS TRANSMISSION CORPORATION	ASSIGNMENT	1136	250				
CNG TRANSMISSION CORPORATION	CNG TRANSMISSION CORPORATION	MERGER/NAME CHANGE	51	795				
DOMINION TRANSMISSION, INC.	DOMINION TRANSMISSION, INC.	MERGER/NAME CHANGE	58	362				
CNX GAS COMPANY LLC	CNX GAS COMPANY LLC	MEMORANDUM FARMOUT AGREEMENT	1522	33				
DOMINION TRANSMISSION, INC.	CNX GAS COMPANY LLC AND NOBLE ENERGY, INC.	LIMITED PARTIAL ASSIGNMENT (50%)	1543	1235				
DOMINION TRANSMISSION, INC.	CNX GAS COMPANY LLC AND NOBLE ENERGY, INC.	PARTIAL ASSIGNMENT (32%)	1576	125				

RECEIVED
Office of
OCT 19
WV Department
of Environmental
Protection

14

12-0467-0034-0000
12-0467-0035-0000
12-0467-0036-0000
12-0467-0036-0001
p/o 12-467-0032-0000

CNX GAS COMPANY LLC	NOBLE ENERGY, INC.	ASSIGNMENT	1584	942
DOMINION TRANSMISSION, INC.	DOMINION ENERGY TRANSMISSION, INC.	MERGER/NAME CHANGE	WVSOS	
NOBLE ENERGY, INC.	HG ENERGY II APPALACHIA, LLC	ASSIGNMENT	1600	692
DOMINION ENERGY TRANSMISSION, INC.	HG ENERGY II APPALACHIA, LLC	SECOND AMENDMENT TO MEMORANDUM OF FARMOUT AGREEMENT	1601	581
DOMINION ENERGY TRANSMISSION, INC.	HG ENERGY II APPALACHIA, LLC	THIRD AMENDMENT TO MEMORANDUM OF FARMOUT AGREEMENT	1621	1295
DOMINION ENERGY TRANSMISSION, INC.	HG ENERGY II APPALACHIA, LLC	ASSIGNMENT (68%)	1637	1081

18

LC008461
12-0467-0049-0000
12-0467-0049-0001
12-0467-0050-0000
12-0467-0051-0000
12-0467-0051-0001
12-0467-0051-0002
12-0487-0002-0000
12-0487-0002-0001
12-0487-0002-0002
12-0487-0010-0000

Office of Oil & Gas
RECEIVED
OCT 19 2022
WV Department of Environmental Protection

Q100617000
FEHGI0041

DOMINION TRANSMISSION, INC.	CNX GAS COMPANY LLC	NOBLE ENERGY, INC.	ASSIGNMENT	1524	491
DOMINION TRANSMISSION, INC.	CNX GAS COMPANY LLC	NOBLE ENERGY, INC.	LIMITED PARTIAL ASSIGNMENT (50%)	1543	1235
DOMINION TRANSMISSION, INC.	CNX GAS COMPANY LLC AND NOBLE ENERGY, INC.	PARTIAL ASSIGNMENT (32%)	1576	125	
NOBLE ENERGY, INC.	NOBLE ENERGY, INC.	ASSIGNMENT	1584	942	
DOMINION TRANSMISSION, INC.	HG ENERGY II APPALACHIA, LLC	ASSIGNMENT	1600	692	
DOMINION ENERGY TRANSMISSION, INC.	DOMINION ENERGY TRANSMISSION, INC.	MERGER/NAME CHANGE	WVSOS		
DOMINION ENERGY TRANSMISSION, INC.	HG ENERGY II APPALACHIA, LLC	SECOND AMENDMENT TO MEMORANDUM OF FARMOUT AGREEMENT	1601	581	
DOMINION ENERGY TRANSMISSION, INC.	HG ENERGY II APPALACHIA, LLC	THIRD AMENDMENT TO MEMORANDUM OF FARMOUT AGREEMENT	1621	1295	
DOMINION ENERGY TRANSMISSION, INC.	HG ENERGY II APPALACHIA, LLC	ASSIGNMENT (68%)	1637	1081	
DOMINION ENERGY TRANSMISSION, INC.	HG ENERGY II APPALACHIA, LLC	NOT LESS THAN 1/8	497	4	
HOPE NATURAL GAS COMPANY	HOPE NATURAL GAS COMPANY	CONFIRMATORY DEED	903	179	
CONSOLIDATED GAS SUPPLY CORPORATION	CONSOLIDATED GAS SUPPLY CORPORATION	ASSIGNMENT	1136	250	
CNG TRANSMISSION CORPORATION	CNG TRANSMISSION CORPORATION	MERGER/NAME CHANGE	51	795	
DOMINION TRANSMISSION, INC.	DOMINION TRANSMISSION, INC.	MERGER/NAME CHANGE	58	362	
DOMINION TRANSMISSION, INC.	CNX GAS COMPANY LLC	MEMORANDUM FARMOUT AGREEMENT	1522	33	
CNX GAS COMPANY LLC	NOBLE ENERGY, INC.	LIMITED PARTIAL ASSIGNMENT (50%)	1543	1235	
DOMINION TRANSMISSION, INC.	CNX GAS COMPANY LLC AND NOBLE ENERGY, INC.	PARTIAL ASSIGNMENT (32%)	1576	125	
CNX GAS COMPANY LLC	NOBLE ENERGY, INC.	ASSIGNMENT	1584	942	
DOMINION TRANSMISSION, INC.	DOMINION ENERGY TRANSMISSION, INC.	MERGER/NAME CHANGE	WVSOS		
DOMINION ENERGY TRANSMISSION, INC.	HG ENERGY II APPALACHIA, LLC	SECOND AMENDMENT TO MEMORANDUM OF FARMOUT AGREEMENT	1601	581	
DOMINION ENERGY TRANSMISSION, INC.	HG ENERGY II APPALACHIA, LLC	THIRD AMENDMENT TO MEMORANDUM OF FARMOUT AGREEMENT	1621	1295	
DOMINION ENERGY TRANSMISSION, INC.	HG ENERGY II APPALACHIA, LLC	ASSIGNMENT (68%)	1637	1081	
DOMINION ENERGY TRANSMISSION, INC.	HG ENERGY II APPALACHIA, LLC	NOT LESS THAN 1/8	68	532	
HOPE NATURAL GAS COMPANY	HOPE NATURAL GAS COMPANY	CONFIRMATORY DEED	294	89	
CONSOLIDATED GAS SUPPLY CORPORATION	CONSOLIDATED GAS SUPPLY CORPORATION	ASSIGNMENT	425	127	
CNG TRANSMISSION CORPORATION	CNG TRANSMISSION CORPORATION	MERGER/NAME CHANGE	WVSOS		
DOMINION TRANSMISSION, INC.	DOMINION TRANSMISSION, INC.	MERGER/NAME CHANGE	WVSOS		
DOMINION TRANSMISSION, INC.	CNX GAS COMPANY LLC	MEMORANDUM FARMOUT AGREEMENT	672	154	
CNX GAS COMPANY LLC	NOBLE ENERGY, INC.	LIMITED PARTIAL ASSIGNMENT (50%)	684	57	

11/04/2022

20

LC051844
12-0487-0004-0000
12-0487-0004-0001
12-0487-0004-0002

Q100873000

DOMINION ENERGY TRANSMISSION, INC.	DOMINION ENERGY TRANSMISSION, INC.	HG ENERGY II APPALACHIA, LLC	ASSIGNMENT	1601	581
DOMINION ENERGY TRANSMISSION, INC.	DOMINION ENERGY TRANSMISSION, INC.	HG ENERGY II APPALACHIA, LLC	THIRD AMENDMENT TO MEMORANDUM OF FARMOUT AGREEMENT	1621	1295
DOMINION ENERGY TRANSMISSION, INC.	DOMINION ENERGY TRANSMISSION, INC.	HG ENERGY II APPALACHIA, LLC	ASSIGNMENT (68%)	1637	1081
DOMINION ENERGY TRANSMISSION, INC.	DOMINION ENERGY TRANSMISSION, INC.	HG ENERGY II APPALACHIA, LLC	NOT LESS THAN 1/8	68	532
HOPE NATURAL GAS COMPANY	HOPE NATURAL GAS COMPANY	CONFIRMATORY DEED	294	89	
CONSOLIDATED GAS SUPPLY CORPORATION	CONSOLIDATED GAS SUPPLY CORPORATION	ASSIGNMENT	425	127	
CNG TRANSMISSION CORPORATION	CNG TRANSMISSION CORPORATION	MERGER/NAME CHANGE	WVSOS		
DOMINION TRANSMISSION, INC.	DOMINION TRANSMISSION, INC.	MERGER/NAME CHANGE	WVSOS		
DOMINION TRANSMISSION, INC.	CNX GAS COMPANY LLC	MEMORANDUM FARMOUT AGREEMENT	672	154	
CNX GAS COMPANY LLC	NOBLE ENERGY, INC.	LIMITED PARTIAL ASSIGNMENT (50%)	684	57	

70 ✓	LC022733	04-010C-0011-0000	Q100522000	DOMINION TRANSMISSION, INC.	CNX GAS COMPANY LLC AND NOBLE ENERGY, INC.	PARTIAL ASSIGNMENT (32%)	712	848
				CNX GAS COMPANY LLC	NOBLE ENERGY, INC.	ASSIGNMENT	717	1
				DOMINION TRANSMISSION, INC.	DOMINION ENERGY TRANSMISSION, INC.	MERGER/NAME CHANGE	WVS05	
				NOBLE ENERGY, INC.	HG ENERGY II APPALACHIA, LLC	ASSIGNMENT	722	170
				DOMINION ENERGY TRANSMISSION, INC.	HG ENERGY II APPALACHIA, LLC	SECOND AMENDMENT TO MEMORANDUM OF FARMOUT AGREEMENT	723	499
				DOMINION ENERGY TRANSMISSION, INC.	HG ENERGY II APPALACHIA, LLC	THIRD AMENDMENT TO MEMORANDUM OF FARMOUT AGREEMENT	734	558
				DOMINION ENERGY TRANSMISSION, INC.	HG ENERGY II APPALACHIA, LLC	FARMOUT AGREEMENT	736	220
				GEORGE CUMMINGS AND ELLA CUMMINGS, HIS WIFE	HOPE NATURAL GAS COMPANY	NOT LESS THAN 1/8	82	109
				HOPE NATURAL GAS COMPANY	SOUTH PENN OIL COMPANY	ASSIGNMENT	91	259
				HOPE NATURAL GAS COMPANY	HOPE NATURAL GAS COMPANY	ASSIGNMENT	120	247
84 ✓	LC028354	04-010C-0012-0000 04-010C-0013-0000 04-010D-0009-0000 04-010D-0010-0000 04-010D-0023-0000	Q100821000	DOMINION TRANSMISSION, INC.	CNX GAS COMPANY LLC	CONFIRMATORY DEED	294	89
				CONSOLIDATED GAS SUPPLY CORPORATION	CONSOLIDATED GAS SUPPLY CORPORATION	ASSIGNMENT	425	127
				CNG TRANSMISSION CORPORATION	CNG TRANSMISSION CORPORATION	MERGER/NAME CHANGE	WVS05	
				DOMINION TRANSMISSION, INC.	DOMINION TRANSMISSION, INC.	MERGER/NAME CHANGE	WVS05	
				CNX GAS COMPANY LLC	NOBLE ENERGY, INC.	MEMORANDUM OF FARMOUT AGREEMENT	672	154
				DOMINION TRANSMISSION, INC.	CNX GAS COMPANY LLC AND NOBLE ENERGY, INC.	LIMITED PARTIAL ASSIGNMENT (50%)	694	57
				CNX GAS COMPANY LLC	NOBLE ENERGY, INC.	PARTIAL ASSIGNMENT (32%)	712	848
				DOMINION TRANSMISSION, INC.	DOMINION ENERGY TRANSMISSION, INC.	ASSIGNMENT	717	1
				NOBLE ENERGY, INC.	HG ENERGY II APPALACHIA, LLC	MERGER/NAME CHANGE	WVS05	
				DOMINION ENERGY TRANSMISSION, INC.	HG ENERGY II APPALACHIA, LLC	ASSIGNMENT	722	170
85 ✓	Fee	04-010D-0011-0000 04-010D-0012-0002 04-010D-0008-0006 04-010D-0008-0008 04-010D-0008-0003 04-010D-0008-0000 04-010D-0008-0004 04-010D-0008-0005 04-010D-0008-0007 04-010D-0008-0009 04-010D-0012-0003 04-010D-0012-0000 04-010D-0008-0007 04-010D-0008-0001	Fee	DOMINION ENERGY TRANSMISSION, INC.	HG ENERGY II APPALACHIA, LLC	ASSIGNMENT	740	746
				DOMINION ENERGY TRANSMISSION, INC.	HG ENERGY II APPALACHIA, LLC	FARMOUT AGREEMENT	734	558
				DOMINION ENERGY TRANSMISSION, INC.	HG ENERGY II APPALACHIA, LLC	FARMOUT AGREEMENT	LEWIS 736	220

11/04/2022

RECEIVED
Office of Oil & Gas
OCT 19 2022
WV Department of
Environmental Protection