

10,644' T.H.

5,767' B.H.

T.H. LATITUDE 39°17'30" B.H. LATITUDE 39°15'00"

ARSENAL RESOURCES GAMELLI HSOG 203

(S.P.C. NORTH ZONE) (UTM(M) ZONE 17 NORTH)
 NAD'83 S.P.C. (FT) N. 278,094.3 E. 1,769,093.7
 NAD'83 GEO. LAT-(N) 39.261872 LONG-(W) 80.204257
 NAD'83 UTM (M) N. 4,346,083.7 E. 568,656.0

LANDING POINT
 NAD'83 S.P.C. (FT) N. 277,378.9 E. 1,769,093.8
 NAD'83 GEO. LAT-(N) 39.259408 LONG-(W) 80.204218
 NAD'83 UTM (M) N. 4,345,865.8 E. 568,656.3

BOTTOM HOLE
 NAD'83 S.P.C. (FT) N. 263,544.2 E. 1,773,862.1
 NAD'83 GEO. LAT-(N) 39.221527 LONG-(W) 80.187024
 NAD'83 UTM (M) N. 4,341,675.0 E. 570,177.5

03/01/2019

NOTES ON SURVEY

1. NO WATER WELLS WERE FOUND WITHIN 250' OF PROPOSED GAS WELL. NO AGRICULTURAL BUILDINGS > 2500 SQ. FT. OR DWELLINGS WERE FOUND WITHIN 625' OF THE CENTER OF PROPOSED WELL PAD.

GAMELLI HSOG PAD LAYOUT



LEGEND

LEASE LINE	
INTERIOR LEASE LINE	
SURFACE LINE	
WELL LATERAL	
OFFSET LINE	
TIE LINE	
CREEK	
ROAD	
COUNTY ROUTE	
STATE ROUTE	
PROPOSED WELL	
EXISTING WELL	
PERMITTED WELL	
LEASE TAG	

TAG	SURFACE OWNER	TAX MAP / PCL	ACREAGE
A	JAMES T. GAMELLI ET AL.	330-28	151.20±
B	SCOT S. & LYNN B. DIERINGER	350-7.1	57.45±
C	SARAH L. SPURLOCK	350-7	97.19±
D	CAKOLYN S. CLEGHORN	351-4.2	85.80±
E	RONALD & JODY CRIM	351-15	100.37±
F	JODY A. CRIM	351-15.7	4.10±
G	JODY A. CRIM	351-15.1	3.39±
H	DEBORAH J. CRIM	351-25.3	1±
I	DELLA R. RUFFLE	351-25	2.87±
J	ECOSYSTEM INVESTMENT PARTNERS III, LLC	351-25.2	31.90±
K	ECOSYSTEM INVESTMENT PARTNERS III, LLC	351-26	11.60±
L	ROGER P. II & MELISSA L. SUTTER	351-26.1	13.18±
M	ROGER P. II & MELISSA L. SUTTER	351-27.1	19.87±
N	ROGER P. II & MELISSA L. SUTTER	351-28.1	18.46±
O	ROGER P. II & MELISSA L. SUTTER	351-29	54.00±
P	ROGER P. II & MELISSA L. SUTTER	371-1.1	12.19±
Q	ECOSYSTEM INVESTMENT PARTNERS III, LLC	371-1.3	10.01±
R	ECOSYSTEM INVESTMENT PARTNERS III, LLC	371-8	71.65±
S	ECOSYSTEM INVESTMENT PARTNERS III, LLC	371-9	105.41±

NAD'83 GRID NORTH

T.H. LONGITUDE 80°10'00" B.H. LONGITUDE 80°10'00" T.H. 11,034' B.H. 11,037'



GAMELLI HSOG 203 WELL TIES

LINE	BEARING	DISTANCE
L1	S 86°33' E	1355.67
L2	S 28°58' E	2650.44'
L3	S 61°10' W	230.97
L4	S 19°00' E	638.75'

REFERENCES



SLS
 Land & Energy Development
 Solutions from the ground up.
 P.O. Box 160 • 42 Vanhorn Drive • Glenville, WV 26031 • (804) 402-5634
 www.slsurveyors.com



(+) DENOTES LOCATION OF WELL ON UNITED STATES TOPOGRAPHIC MAPS.
 DATE OCTOBER 26, 20 18
 REVISED _____
 OPERATORS WELL NO. GAMELLI HSOG 203
 API WELL NO. 47 - 33 - 05933
 STATE PA COUNTY WV PERMIT 05933

I THE UNDERSIGNED, HEREBY CERTIFY THAT THIS PLAN IS CORRECT TO THE BEST OF MY KNOWLEDGE AND BELIEF AND SHOWS ALL THE INFORMATION REQUIRED BY LAW AND THE REGULATIONS ISSUED AND PRESCRIBED BY THE DIVISION OF ENVIRONMENTAL PROTECTION.

P.S. C. Victor Moyers
 849

MINIMUM DEGREE OF ACCURACY 1 / 2500 FILE NO. 8597P203.dwg
 HORIZONTAL & VERTICAL CONTROL DETERMINED BY DGPS (SURVEY GRADE TIE TO CORS NETWORK) SCALE 1" = 2000'

STATE OF WEST VIRGINIA
 DIVISION OF ENVIRONMENTAL PROTECTION
 OFFICE OF OIL AND GAS

WELL TYPE: OIL GAS INJECTION WASTE DISPOSAL IF "GAS" PRODUCTION STORAGE DEEP SHALLOW

LOCATION:
 ELEVATION EXISTING: 1,130.50' / PROPOSED: 1,140.50' WATERSHED BEARDS RUN
 DISTRICT SIMPSON COUNTY HARRISON QUADRANGLE ROSEMONT 7.5'

SURFACE OWNER JAMES T. GAMELLI ET AL. ACREAGE 151.20±
 ROYALTY OWNER JAMES T. GAMELLI ET AL. ACREAGE 151.20±
 PROPOSED WORK:
 DRILL CONVERT DRILL DEEPER REDRILL FRACTURE OR STIMULATE PLUG OFF OLD FORMATION
 PERFORATE NEW FORMATION PLUG AND ABANDON CLEAN OUT AND REPLUG OTHER
 PHYSICAL CHANGE IN WELL (SPECIFY) _____ TARGET FORMATION HUNTERSVILLE CHERT (PILOT HOLE)
 ESTIMATED DEPTH 22,333.4' TMD / 7,317' TVD (LATERAL) / 7,427' TVD (PILOT HOLE)

WELL OPERATOR ARSENAL RESOURCES DESIGNATED AGENT WILLIAM VEIGEL
 ADDRESS 6031 WALLACE RD. EXT. SUITE 300 ADDRESS 65 PROFESSIONAL PLACE
WEXFORD, PA 15090 BRIDGEPORT, WV 26330

COUNTY NAME PERMIT

GAMELLI PAD POSSIBLE WATER PURVEYORS

ACCESS ROAD ENTRANCE
UTM(NAD'83)(METERS)
N. 4,346,283.1
E. 868,913.9
LATITUDE (NAD'83) 39°15'47.3"
LONGITUDE (NAD'83) 80°12'04.3"

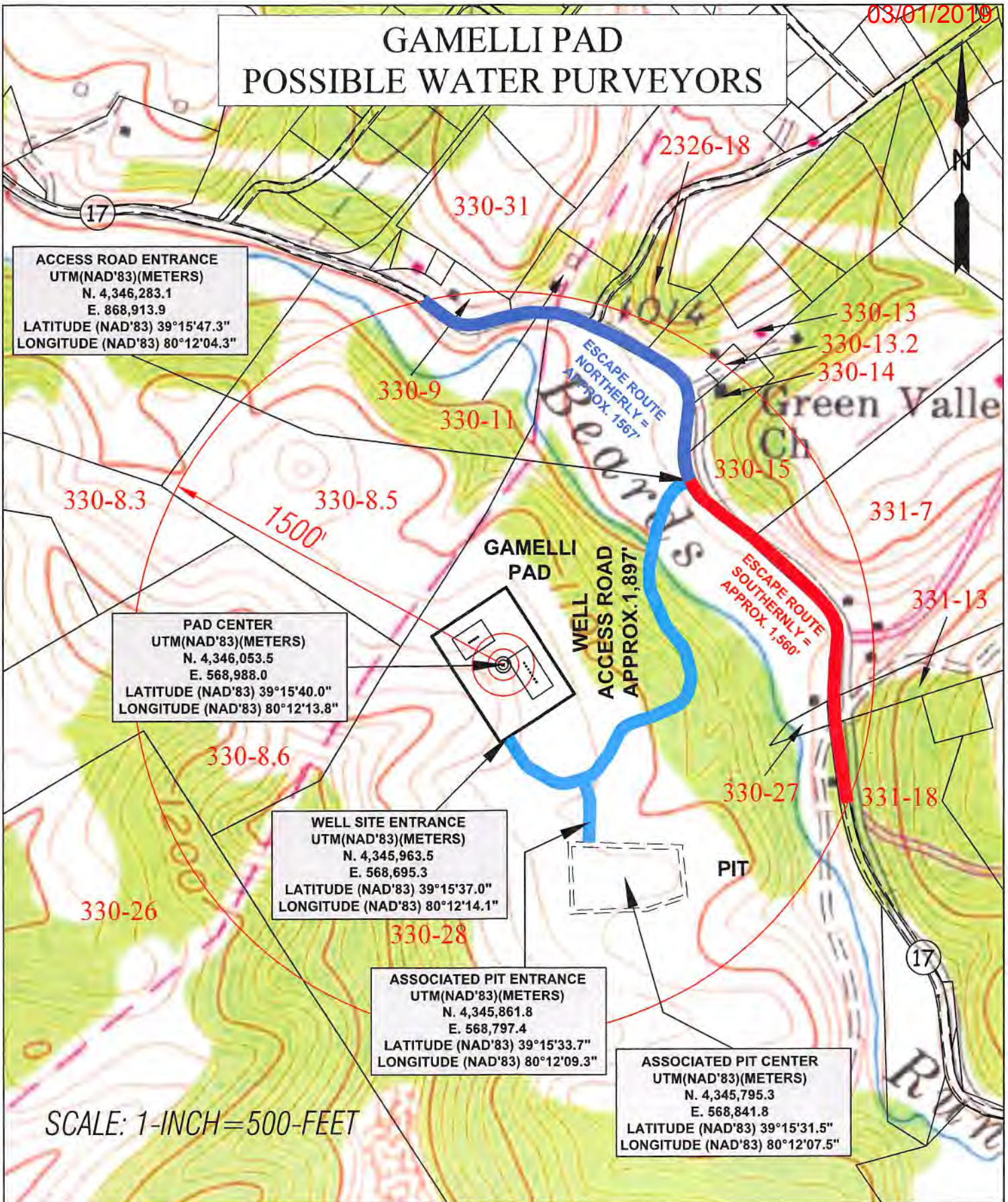
PAD CENTER
UTM(NAD'83)(METERS)
N. 4,346,053.5
E. 568,988.0
LATITUDE (NAD'83) 39°15'40.0"
LONGITUDE (NAD'83) 80°12'13.8"

WELL SITE ENTRANCE
UTM(NAD'83)(METERS)
N. 4,345,963.5
E. 568,695.3
LATITUDE (NAD'83) 39°15'37.0"
LONGITUDE (NAD'83) 80°12'14.1"

ASSOCIATED PIT ENTRANCE
UTM(NAD'83)(METERS)
N. 4,345,861.8
E. 568,797.4
LATITUDE (NAD'83) 39°15'33.7"
LONGITUDE (NAD'83) 80°12'09.3"

ASSOCIATED PIT CENTER
UTM(NAD'83)(METERS)
N. 4,345,795.3
E. 568,841.8
LATITUDE (NAD'83) 39°15'31.5"
LONGITUDE (NAD'83) 80°12'07.5"

SCALE: 1-INCH=500-FEET



TOPO SECTIONS OF:
ROSEMONT WV 7.5' QUAD

OPERATOR:
ARSENAL RESOURCES
65 Professional Place, Suite 200
Bridgeport, WV 26330

DRAWN BY K.G.M.	FILE NO. 8597	DATE 9-28-18	CADD FILE: 0367WATERPURVEYOR.DWG
--------------------	------------------	-----------------	-------------------------------------

COUNTY	DISTRICT
HARRISON	SIMPSON-OUTSIDE