

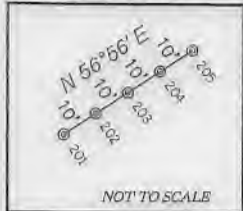
GAMELLI HSOG 202 WELL TIES

LINE	BEARING	DISTANCE
L1	S 70°13' W	1088.35'
L2	S 18°00' E	838.84'
L3	S 29°17' E	2549.74'
L4	S 17°58' E	7047.95'

NOTES ON SURVEY

- NO WATER WELLS WERE FOUND WITHIN 250' OF PROPOSED GAS WELL. NO AGRICULTURAL BUILDINGS > 2500 SQ. FT. OR DWELLINGS WERE FOUND WITHIN 625' OF THE CENTER OF PROPOSED WELL PAD.

GAMELLI HSOG PAD LAYOUT



LEGEND

LEASE LINE	[Symbol]
INTERIOR LEASE LINE	[Symbol]
SURFACE LINE	[Symbol]
WELL LATERAL	[Symbol]
OFFSET LINE	[Symbol]
TIE LINE	[Symbol]
CREEK	[Symbol]
ROAD	[Symbol]
COUNTY ROUTE	[Symbol]
STATE ROUTE	[Symbol]
PROPOSED WELL	[Symbol]
EXISTING WELL	[Symbol]
PERMITTED WELL	[Symbol]
LEASE TAG	[Symbol]

ARSENAL RESOURCES  
GAMELLI HSOG 202

(S.P.C. NORTH ZONE) (UTM(M) ZONE 17 NORTH)  
 NAD'83 S.P.C.(FT) N. 278,088.8 E. 1,769,085.8  
 NAD'83 GEO. LAT-(N) 39.261357 LONG-(W) 80.204287  
 NAD'83 UTM (M) N. 4,346,082.0 E. 568,648.5

**LANDING POINT**  
 NAD'83 S.P.C.(FT) N. 277,123.1 E. 1,768,288.0  
 NAD'83 GEO. LAT-(N) 39.258688 LONG-(W) 80.207075  
 NAD'83 UTM (M) N. 4,345,783.7 E. 568,120.9

**BOTTOM HOLE**  
 NAD'83 S.P.C.(FT) N. 263,462.2 E. 1,772,991.0  
 NAD'83 GEO. LAT-(N) 39.221283 LONG-(W) 80.190096  
 NAD'83 UTM (M) N. 4,341,645.5 E. 569,912.5

TAG	SURFACE OWNER	TAX MAP P.C.I.	ACREAGE
A	JAMES T. GAMELLI ET AL.	310-28	151.20±
B	DEPOLO FAMILY TRUST	310-8,6	33.50±
C	SCOT S. DIERINGER ET AL.	330-25	172.91±
D	SCOTT & LINDA DIERINGER	350-7,1	57.45±
E	SARA L. SPURLOCK	350-7	97.19±
F	R. MARK & DIANA L. HACKETT	350-18	127.64±
G	CAROLYN S. CLEGHORN	351-4,2	85.80±
H	RONALD R., II & JOBY A. CRIM	351-15	100.37±
I	DELLA R. & RANDALL RIFFLE	351-16	22.75±
J	ECOSYSTEM INVESTMENT PARTNERS III, LLC	351-16,1	2.00±
K	ECOSYSTEM INVESTMENT PARTNERS III, LLC	351-25,2	31.98±
L	ECOSYSTEM INVESTMENT PARTNERS III, LLC	351-25,1	27.30±
M	ECOSYSTEM INVESTMENT PARTNERS III, LLC	351-26	11.64±
N	ECOSYSTEM INVESTMENT PARTNERS III, LLC	351-25,4	1.03±
O	ECOSYSTEM INVESTMENT PARTNERS III, LLC	371-1	94.91±
P	ECOSYSTEM INVESTMENT PARTNERS III, LLC	371-1,2	19.59±
Q	ECOSYSTEM INVESTMENT PARTNERS III, LLC	371-1,1	12.19±
R	ECOSYSTEM INVESTMENT PARTNERS III, LLC	371-7	162.57±
S	ECOSYSTEM INVESTMENT PARTNERS III, LLC	371-7	162.57±
T	ECOSYSTEM INVESTMENT PARTNERS III, LLC	371-8	71.65±

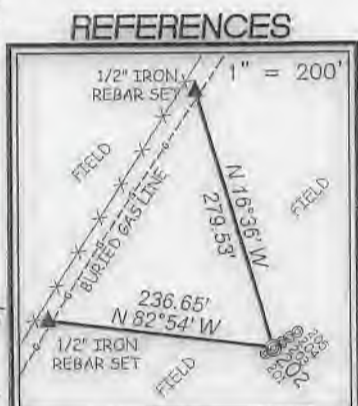
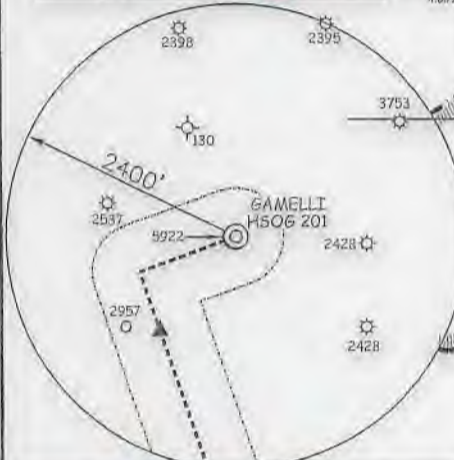
NAD'83 GRID NORTH

T.H. LONGITUDE 80°10'00" B.H. LONGITUDE 80°10'00"

11,040' T.H.

COUNTY NAME

PERMIT



**SLS**  
 Land & Energy Development  
 Solutions from the ground up.  
 P.O. Box 150 | 12 Vanhorn Drive | Glenville, WV 26031 | (904) 462-5634  
 www.slsurveys.com

I THE UNDERSIGNED, HEREBY CERTIFY THAT THIS PLAN IS CORRECT TO THE BEST OF MY KNOWLEDGE AND BELIEF AND SHOWS ALL THE INFORMATION REQUIRED BY LAW AND THE REGULATIONS ISSUED AND PRESCRIBED BY THE DIVISION OF ENVIRONMENTAL PROTECTION.

P.S. 849 *C. Victor Moyers*



(+) DENOTES LOCATION OF WELL ON UNITED STATES TOPOGRAPHIC MAPS.  
 DATE OCTOBER 18, 20 18

REVISED \_\_\_\_\_  
 OPERATORS WELL NO. GAMELLI HSOG 202  
 API WELL NO. 47 - 33 - 05932  
 STATE COUNTY PERMIT

MINIMUM DEGREE OF ACCURACY 1 / 2500 FILE NO. 8597P202.dwg  
 HORIZONTAL & VERTICAL CONTROL DETERMINED BY DGPS (SURVEY GRADE TIE TO CORS NETWORK) SCALE 1" = 2000'

STATE OF WEST VIRGINIA  
 DIVISION OF ENVIRONMENTAL PROTECTION  
 OFFICE OF OIL AND GAS

WELL TYPE: OIL \_\_\_\_\_ GAS X INJECTION \_\_\_\_\_ WASTE DISPOSAL \_\_\_\_\_ IF "GAS" PRODUCTION X STORAGE \_\_\_\_\_ DEEP \_\_\_\_\_ SHALLOW X

LOCATION: ELEVATION EXISTING: 1,131.30' / PROPOSED: 1,140.50' WATERSHED BEARDS RUN  
 DISTRICT SIMPSON COUNTY HARRISON QUADRANGLE ROSEMONT 7.5'

SURFACE OWNER JAMES T. GAMELLI ET AL. ACREAGE 151.20±  
 ROYALTY OWNER JAMES T. GAMELLI ET AL. ACREAGE 151.20±

PROPOSED WORK:  
 DRILL X CONVERT \_\_\_\_\_ DRILL DEEPER \_\_\_\_\_ REDRILL \_\_\_\_\_ FRACTURE OR STIMULATE X PLUG OFF OLD \_\_\_\_\_  
 FORMATION \_\_\_\_\_ PERFORATE NEW FORMATION \_\_\_\_\_ PLUG AND ABANDON \_\_\_\_\_ CLEAN OUT AND REPLUG \_\_\_\_\_ OTHER \_\_\_\_\_  
 PHYSICAL CHANGE IN WELL (SPECIFY) \_\_\_\_\_ TARGET FORMATION MARCELLUS  
 ESTIMATED DEPTH 22,283.2' TMD / 7,317' TVD

WELL OPERATOR ARSENAL RESOURCES DESIGNATED AGENT WILLIAM VEIGEL  
 ADDRESS 6031 WALLACE RD. EXT. SUITE 300 ADDRESS 65 PROFESSIONAL PLACE  
WEXFORD, PA 15090 BRIDGEPORT, WV 26330



03/01/2019

# GAMELLI PAD POSSIBLE WATER PURVEYORS

**ACCESS ROAD ENTRANCE**  
UTM(NAD'83)(METERS)  
N. 4,346,283.1  
E. 868,913.9  
LATITUDE (NAD'83) 39°15'47.3"  
LONGITUDE (NAD'83) 80°12'04.3"

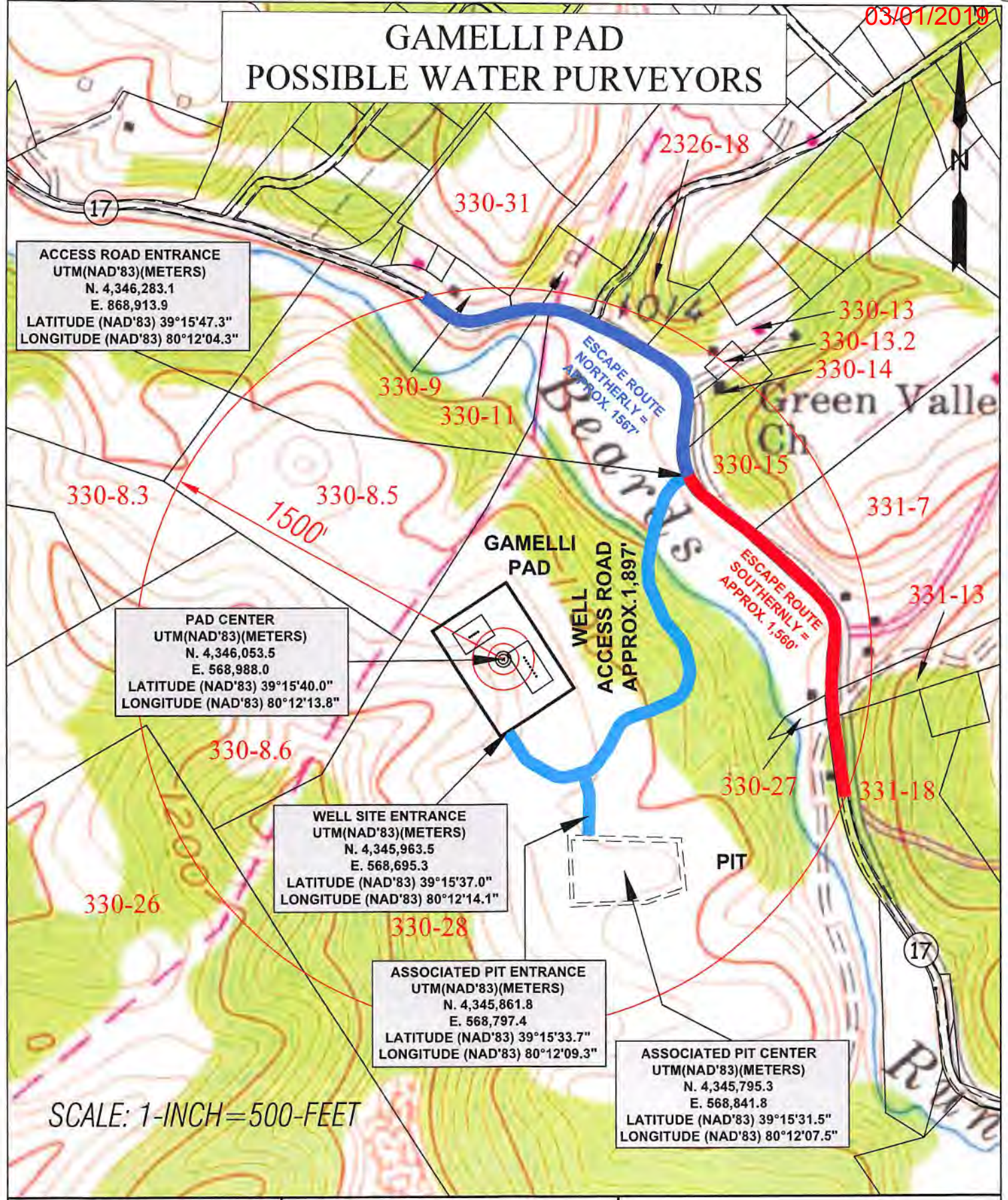
**PAD CENTER**  
UTM(NAD'83)(METERS)  
N. 4,346,053.5  
E. 568,988.0  
LATITUDE (NAD'83) 39°15'40.0"  
LONGITUDE (NAD'83) 80°12'13.8"

**WELL SITE ENTRANCE**  
UTM(NAD'83)(METERS)  
N. 4,345,963.5  
E. 568,695.3  
LATITUDE (NAD'83) 39°15'37.0"  
LONGITUDE (NAD'83) 80°12'14.1"

**ASSOCIATED PIT ENTRANCE**  
UTM(NAD'83)(METERS)  
N. 4,345,861.8  
E. 568,797.4  
LATITUDE (NAD'83) 39°15'33.7"  
LONGITUDE (NAD'83) 80°12'09.3"

**ASSOCIATED PIT CENTER**  
UTM(NAD'83)(METERS)  
N. 4,345,795.3  
E. 568,841.8  
LATITUDE (NAD'83) 39°15'31.5"  
LONGITUDE (NAD'83) 80°12'07.5"

SCALE: 1-INCH=500-FEET



TOPO SECTIONS OF:  
ROSEMONT WV 7.5' QUAD

OPERATOR:  
**ARSENAL RESOURCES**  
65 Professional Place, Suite 200  
Bridgeport, WV 26330

DRAWN BY K.G.M.	FILE NO. 8597	DATE 9-28-18	CADD FILE: 0507WATERPURVEYOR.DWG
--------------------	------------------	-----------------	-------------------------------------

COUNTY HARRISON	DISTRICT SIMPSON-OUTSIDE
--------------------	-----------------------------