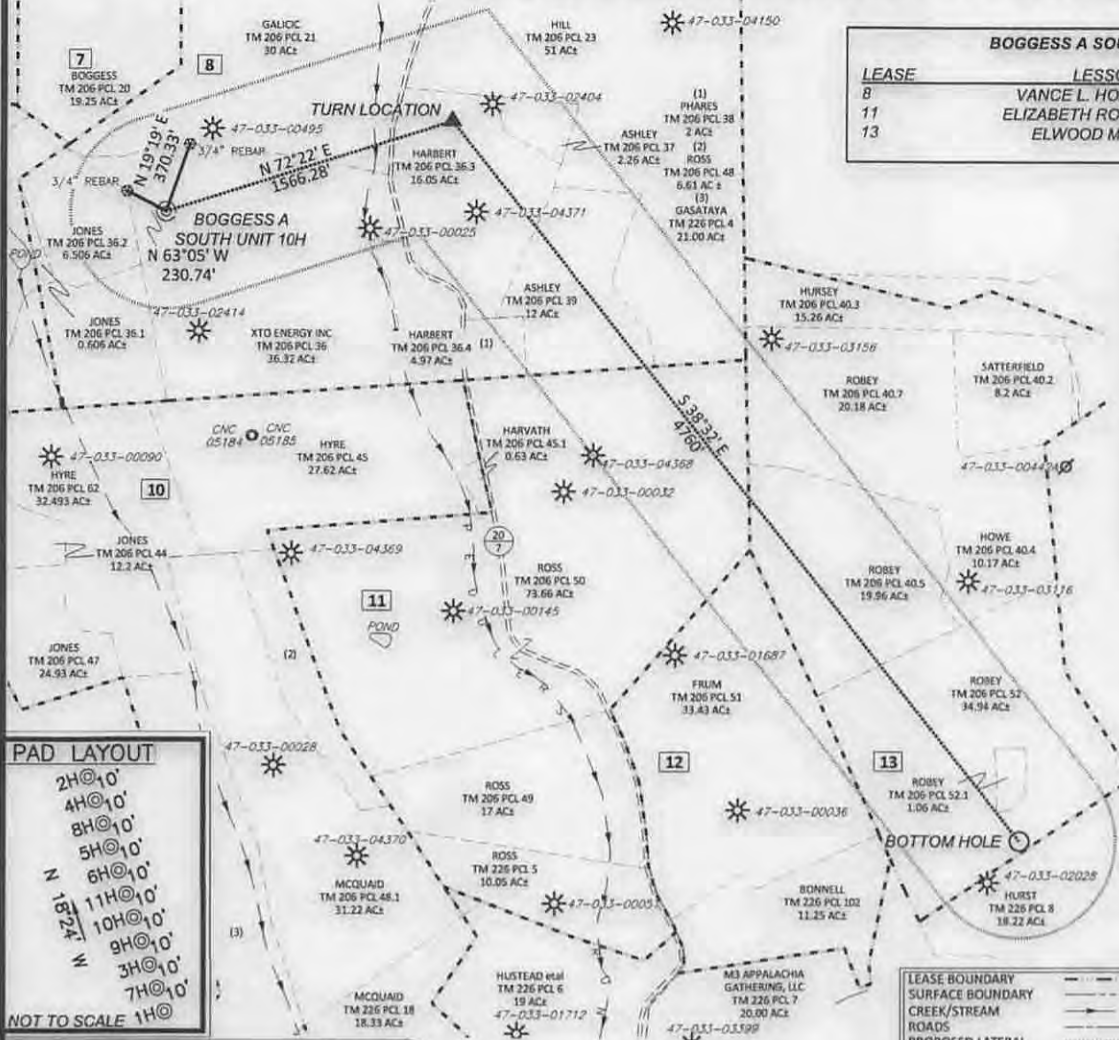


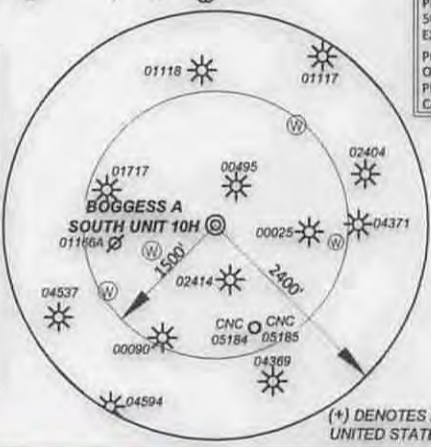
BOGGESS A SOUTH UNIT 10H



BOGGESS A SOUTH UNIT 10H		
LEASE	LESSOR	ACREAGE
8	VANCE L. HORNOR et al	186.5±
11	ELIZABETH ROBINSON et al	101±
13	ELWOOD M. JENKS	108±

BOGGESS A SOUTH UNIT 10H SURFACE HOLE		BOGGESS A SOUTH UNIT 10H TURN LOCATION	
STATE PLANE COORDINATES NORTH ZONE-NAD 27			
(N)	320352	(N)	320826
(E)	1749532	(E)	1751025
L & L DECIMAL NAD 27			
	39.376164		39.377506
	80.386033		80.380769
UTM (NAD 83) ZONE 17 METERS			
(N)	4358711	(N)	4358863
(E)	552896	(E)	553351

BOGGESS A SOUTH UNIT 10H BOTTOM HOLE	
STATE PLANE COORDINATES NORTH ZONE-NAD 27	
(N)	317103
(E)	1753990
L & L DECIMAL NAD 27	
	39.367364
	80.370153
UTM (NAD 83) ZONE 17 METERS	
(N)	4357744
(E)	554273



- NOTES ON SURVEY**
- NO OCCUPIED DWELLINGS OR BUILDINGS 2500 SQUARE FEET OR LARGER USED TO HOUSE OR SHELTER DAIRY CATTLE OR POULTRY HUSBANDRY WITHIN 625' OF THE CENTER OF THE WELL PAD WERE OBSERVED.
 - NO WATER WELLS OR DEVELOPED SPRINGS USED FOR HUMAN OR DOMESTIC ANIMAL CONSUMPTION WERE FOUND WITHIN 250'.
 - SURFACE OWNERSHIP TAKEN FROM THE HARRISON COUNTY TAX ASSESSOR AND COUNTY CLERK OFFICES IN JULY, 2014. WELL LATITUDE AND LONGITUDE FROM SURVEY GRADE (OPUS SOLUTION).
 - WELL LATITUDE AND LONGITUDE FROM SURVEY GRADE (OPUS SOLUTION).
 - TIES TO CORNERS AND REFERENCES BASED ON WV STATE PLANE COORDINATE SYSTEM, NAD 27 NORTH ZONE.
 - LEASE INFORMATION PROVIDED BY XTO ENERGY, INC.

99 Cambridge Place Bridgeport, WV 26330
Toll Free 855-488-9539
Fax 304-933-3327



Civil & Environmental Consultants, Inc.

DATE JAN. 26, 2015

SCALE 1" = 1000' ACCURACY 1/2500

OPERATORS BOGGESS A SOUTH UNIT 10H

WELL No. 47-033-

API No. _____

TYPE OF WELL: _____



I, the undersigned, hereby certify that this plat is correct to the best of my knowledge and belief and shows all the information required by law and the rules issued and prescribed by the Division of Environmental Protection.

Richard E. Adams

STATE OF WEST VIRGINIA
DIVISION OF ENVIRONMENTAL PROTECTION
OFFICE OF OIL AND GAS



GAS: Production Storage *Deep *Shallow

PROPOSED WORK ON LOCATION:
Drill Drill Deeper Redrill Convert
Fracture/Stimulate *Plug off to Formation
Perforate New Formation Plug and Abandon
Clean/ Replug Other Than Above
If "Other" Please see Details below—
DETAILS OF PROPOSED WORK _____

*TARGET FORMATION MARCELLUS

ESTIMATED DEPTH TVD: 7,100', TMD: 12,350'

WELL AREA & LOCATION INFORMATION:

ELEVATION SOURCE GPS (OPUS)

ELEVATION 1183'

WATERSHED REESSES RUN DISTRICT EAGLE

COUNTY HARRISON TOPO QUAD WALLACE

SURFACE OWNER XTO ENERGY INC.

ACREAGE 36.32 ±

ROYALTY OWNER VANCE L. HORNOR, G.P. HORNOR, J.H. HORNOR, M.L. HORNOR, V.L. HORNOR INVESTMENT COMPANY, et al

LEASE ACREAGE 395.5 ±

WELL OPERATOR XTO ENERGY INC.

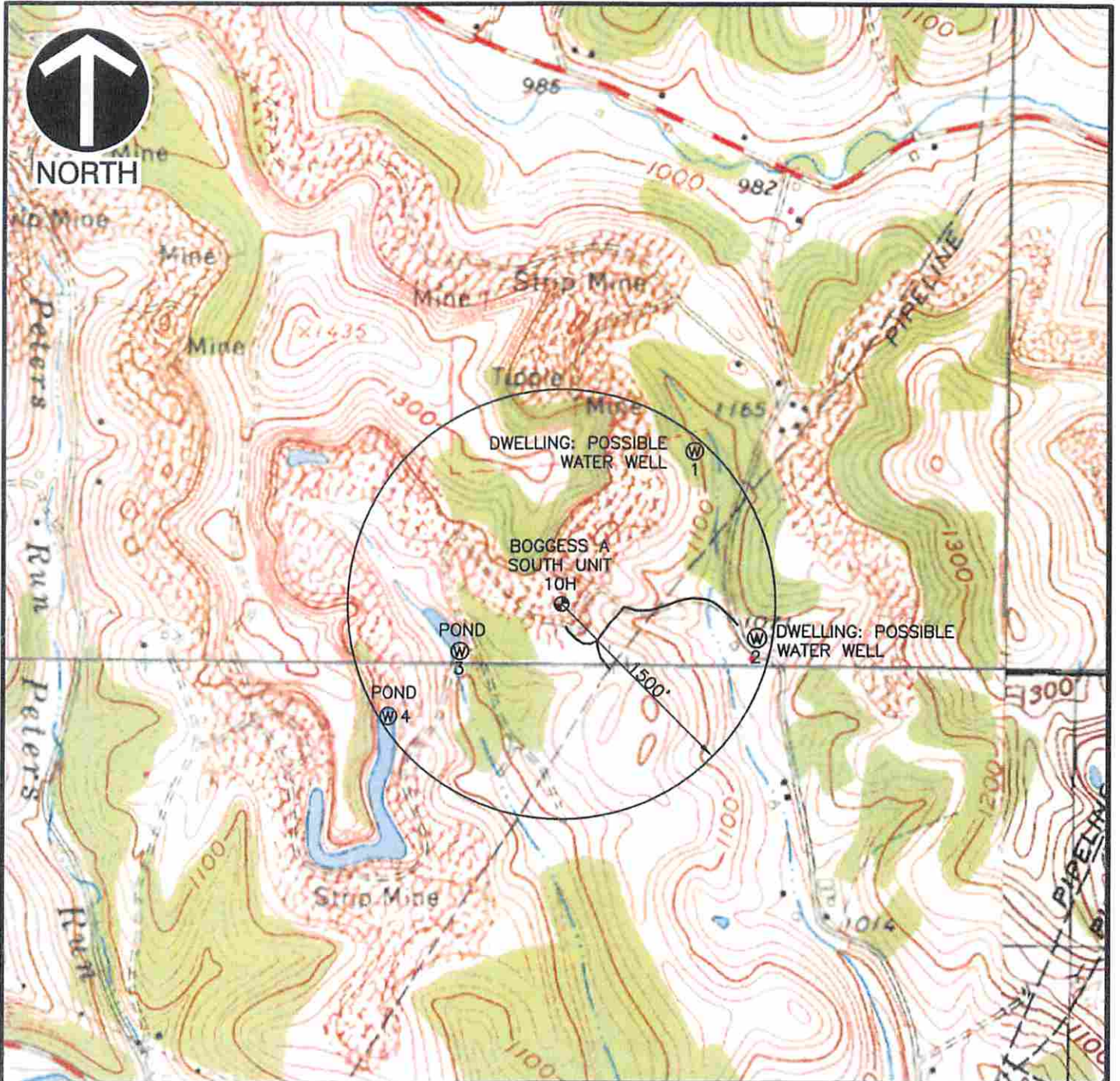
ADDRESS 810 HOUSTON STREET
FORT WORTH, TEXAS 76102

DESIGNATED AGENT GARY BEALL

ADDRESS P.O. BOX 100B
JANE LEW, WV 26385

02/13/2015

P:\2014\142-355\CADD\DWG\142355-SRV-WELL PLAT 10H-WATER TOPO.dwg(10H WATER TOPO) LS:(9/4/2014 - dmartinez) - LP: 9/5/2014 1:36 PM



REFERENCE

1. TOPOGRAPHIC INFORMATION BASED UPON BOGGES UNIT. SURVEY CONDUCTED BY ADAMS LAND SURVEYING, PLLC IN SEPT. 07, 2012 AND UPDATED BY CIVIL AND ENVIRONMENTAL CONSULTANTS, INC. ON SEPT 03, 2014.
2. U.S.G.S. 7.5' TOPOGRAPHIC MAP, WALLACE QUADRANGLE, WV. DATED: 1960, PHOTOREVISED: 1978



Civil & Environmental Consultants, Inc.
 99 Cambridge Place - Bridgeport, WV 26330
 Ph: 304.933.3119 · Fax: 304.933.3327
 www.cecinc.com

XTO ENERGY INC.
BOGGES A UNIT
EAGLE DISTRICT
HARRISON COUNTY, WV
WATERSHED: REESE'S RUN, A TRIBUTARY OF
TENMILE CREEK

DRAWN BY: DAM	CHECKED BY: REA	APPROVED BY: DEM	FIGURE NO.:
DATE: SEPT. 3, 2014	DWG SCALE: 1"=1000'	PROJECT NO: 142-355	

RECEIVED
 Office of Oil and Gas

SEP 06 2014

WV Department of
 Environmental Protection

02/13/2015