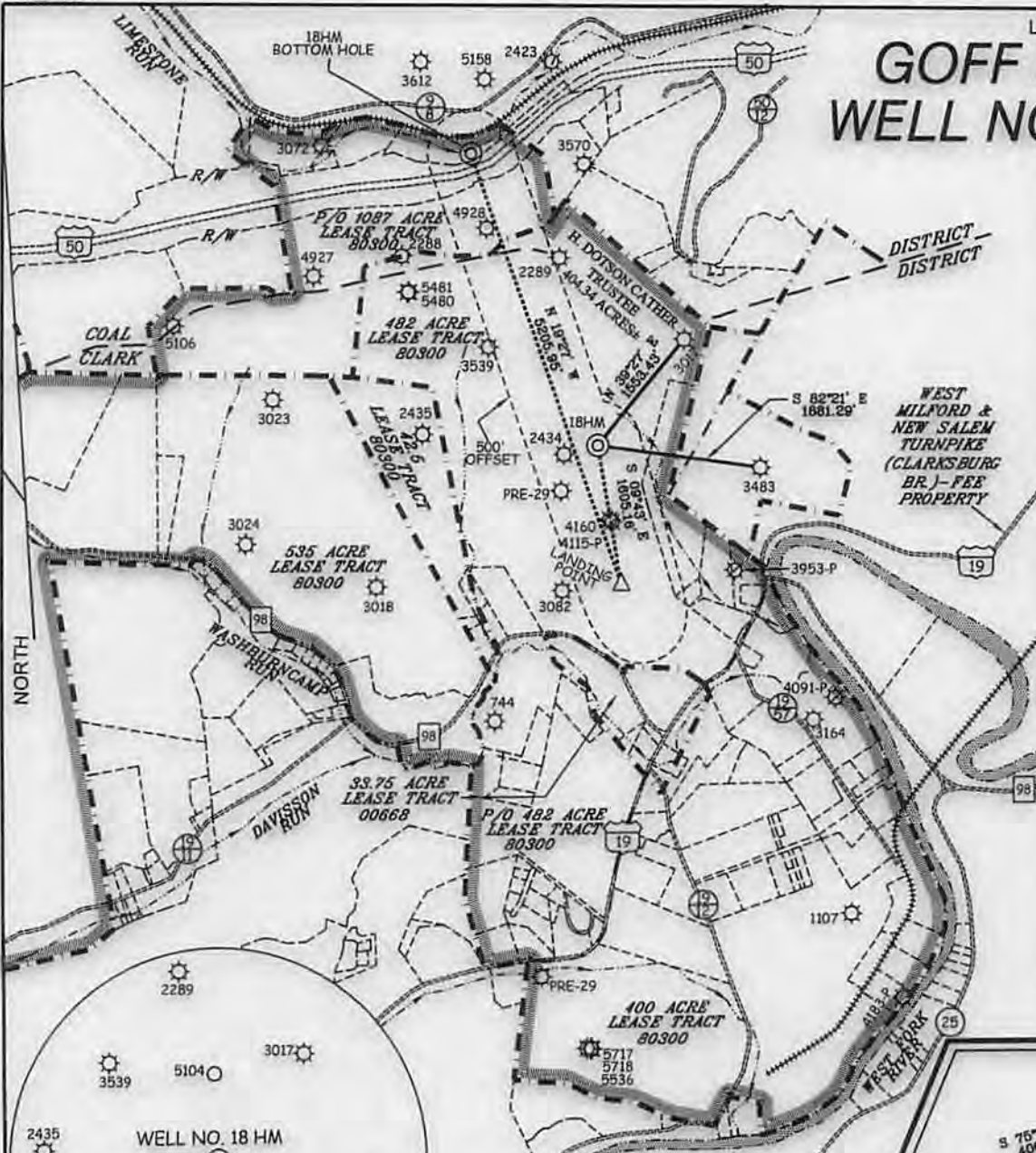


GOFF LEASE WELL NO. 18 HM

LATITUDE 39°17'30"

LONGITUDE 80°22'30"



WELL NO. 18 HM TOP HOLE STATE PLANE COORDINATES (NORTH ZONE NAD 27) N. 284,475 E. 1,752,114 <hr/> TOP HOLE (NAD 27) LAT=(N) 39°16'39.8" LONG=(W) 80°22'32.4" <hr/> TOP HOLE (NAD 83) LAT=(N) 39°16'40.2" LONG=(W) 80°22'31.7" <hr/> TOP HOLE UTM (NAD 83) (N) 4,347,794 (E) 553,867
WELL NO. 18 HM LANDING POINT STATE PLANE COORDINATES (NORTH ZONE NAD 27) N. 282,993 E. 1,752,386 <hr/> LANDING POINT (NAD 27) LAT=(N) 39°16'24.2" LONG=(W) 80°22'28.7" <hr/> LANDING POINT (NAD 83) LAT=(N) 39°16'24.6" LONG=(W) 80°22'28.1" <hr/> LANDING POINT UTM (NAD 83) (N) 4,347,313 (E) 553,957
WELL NO. 18 HM BOTTOM HOLE STATE PLANE COORDINATES (NORTH ZONE NAD 27) N. 287,902 E. 1,750,652 <hr/> BOTTOM HOLE (NAD 27) LAT=(N) 39°17'12.6" LONG=(W) 80°22'51.4" <hr/> BOTTOM HOLE (NAD 83) LAT=(N) 39°17'12.9" LONG=(W) 80°22'50.7" <hr/> BOTTOM HOLE UTM (NAD 83) (N) 4,348,800 (E) 553,404

REFERENCES



NOTES ON SURVEY

1. TIES TO WELLS, REFERENCES, AND CORNERS ARE BASED ON GRID NORTH FOR THE WV STATE PLANE COORDINATE SYSTEM NORTH ZONE NAD '27.
2. LEASE BOUNDARY SHOWN HEREON TAKEN FROM DEED BOOK 70 PAGE 152 AND ADJOINING DEEDS.
3. SURFACE OWNER AND ADJOINER INFORMATION TAKEN FROM THE ASSESSOR AND COUNTY CLERK RECORDS OF HARRISON COUNTY IN JULY, 2013
4. WELL COORDINATES ESTABLISHED BY DGPS(SURVEY GRADE).



I THE UNDERSIGNED, HEREBY CERTIFY THAT THIS PLAT IS CORRECT TO THE BEST OF MY KNOWLEDGE AND BELIEF AND SHOWS ALL THE INFORMATION REQUIRED BY LAW AND THE REGULATIONS ISSUED AND PRESCRIBED BY THE DIVISION OF ENVIRONMENTAL PROTECTION.

P.S. 677 *Gregory A. Smith*



(+) DENOTES LOCATION OF WELL ON UNITED STATES TOPOGRAPHIC MAPS.
 DATE MARCH 6, 20 13
 OPERATORS WELL NO. GOFF 18HM
 API WELL NO. 47 - 033 - 0582046A
 STATE COUNTY PERMIT

MINIMUM DEGREE OF ACCURACY 1/200 FILE NO. 8099P18R2(475-70)
 PROVEN SOURCE OF ELEVATION DGPS (SUBMETER MAPPING GRADE) SCALE 1" = 2,000'

STATE OF WEST VIRGINIA
 DIVISION OF ENVIRONMENTAL PROTECTION
 OFFICE OF OIL AND GAS

WELL TYPE: OIL GAS INJECTION WASTE DISPOSAL IF "GAS" PRODUCTION STORAGE DEEP SHALLOW

LOCATION: GROUND PROPOSED ELEVATION 1,129' 1,126' WATERSHED WEST FORK RIVER

DISTRICT CLARK COUNTY HARRISON QUADRANGLE WOLF SUMMIT 7.5'

SURFACE OWNER H. DOTSON CATHER TRUSTEE ACREAGE 404.34±

ROYALTY OWNER H. DOTSON CATHER TRUSTEE ETAL ACREAGE 1087±

PROPOSED WORK: DRILL CONVERT DRILL DEEPER REDRILL FRACTURE OR STIMULATE PLUG OFF OLD FORMATION PERFORATE NEW FORMATION PLUG AND ABANDON CLEAN OUT AND REPLUG OTHER

PHYSICAL CHANGE IN WELL (SPECIFY) _____ TARGET FORMATION MARCELLUS
 ESTIMATED DEPTH 7,089' TVD / TMD 14,038'

WELL OPERATOR PDC MOUNTAINEER, LLC DESIGNATED AGENT STEVEN P. JOHNSON
 ADDRESS 120 GENESIS BOULEVARD BRIDGEPORT, WV 26330 ADDRESS 120 GENESIS BOULEVARD BRIDGEPORT, WV 26330

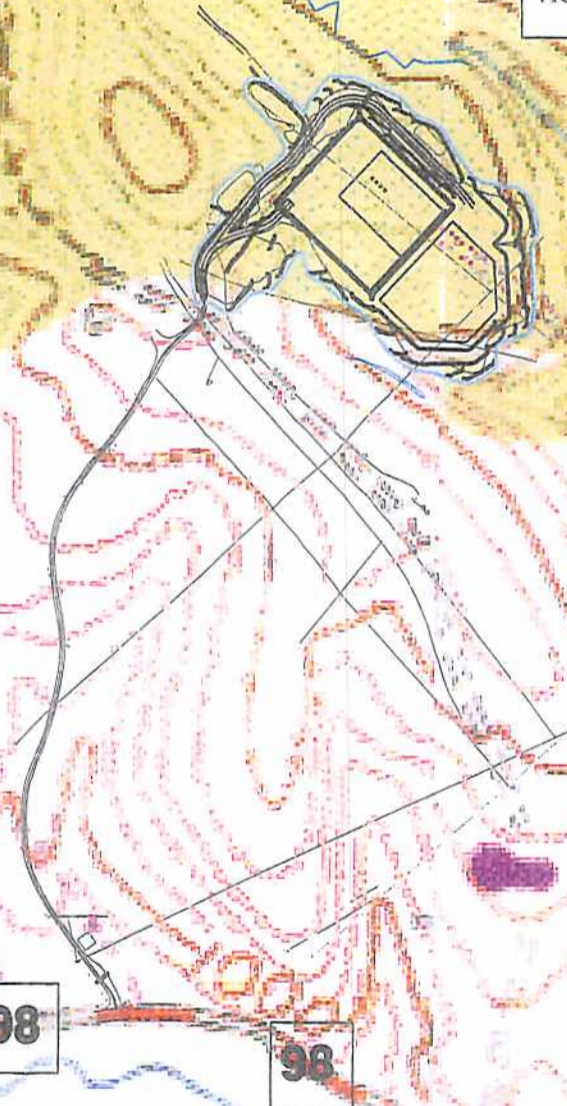
09/26/2014

GOFF LEASE WELL #'S 18HM-21HM

47-03305820



SEE GOFF A (WELLS 18HM-21HM) SITE
PLAN FOR COMPLETE DETAILS OF
ACCESS ROAD, PIT, AND PAD DESIGNS.



98

98

WOLF SUMMIT 7.5'

CLARKSBURG 7.5'

Received

MAY - 7 2014

Office of Oil and Gas
WV Dept. of Environmental Protection



Professional Energy Consultants
A DIVISION OF EARTH LAND SURVEYING

SURVEYORS
Project Mgmt.



ENGINEERS
ENVIRONMENTAL

P.O. Box 150
Martinsburg, WV 26151
(304) 462-2834

50065 Dilles Bottom Road
Shelbyville, OH 45047
(740) 671-9811

HONESTY. INTEGRITY. QUALITY.

TOPO SECTION OF USGS
WOLF SUMMIT & CLARKSBURG
7.5' QUADRANGLES

SCALE: 1"=500'

0' 500' 1000'



09/26/2014

DRAWN BY C.P.M.	FILE NO. 8099	DATE 01-10-14	CADD FILE: 8099REC.DWG
--------------------	------------------	------------------	---------------------------