

Antero Resources
Well No. Westfall Unit 1H
Antero Resources Corporation

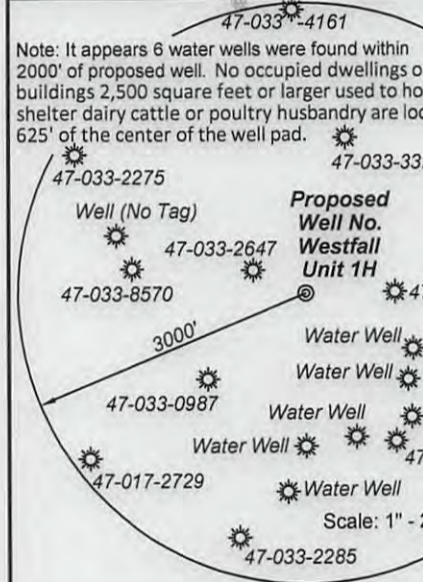
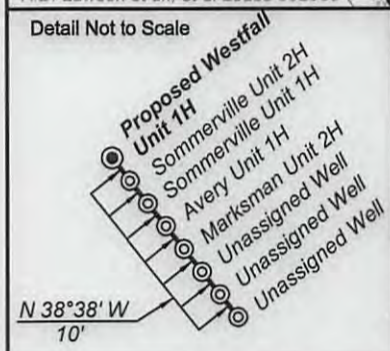
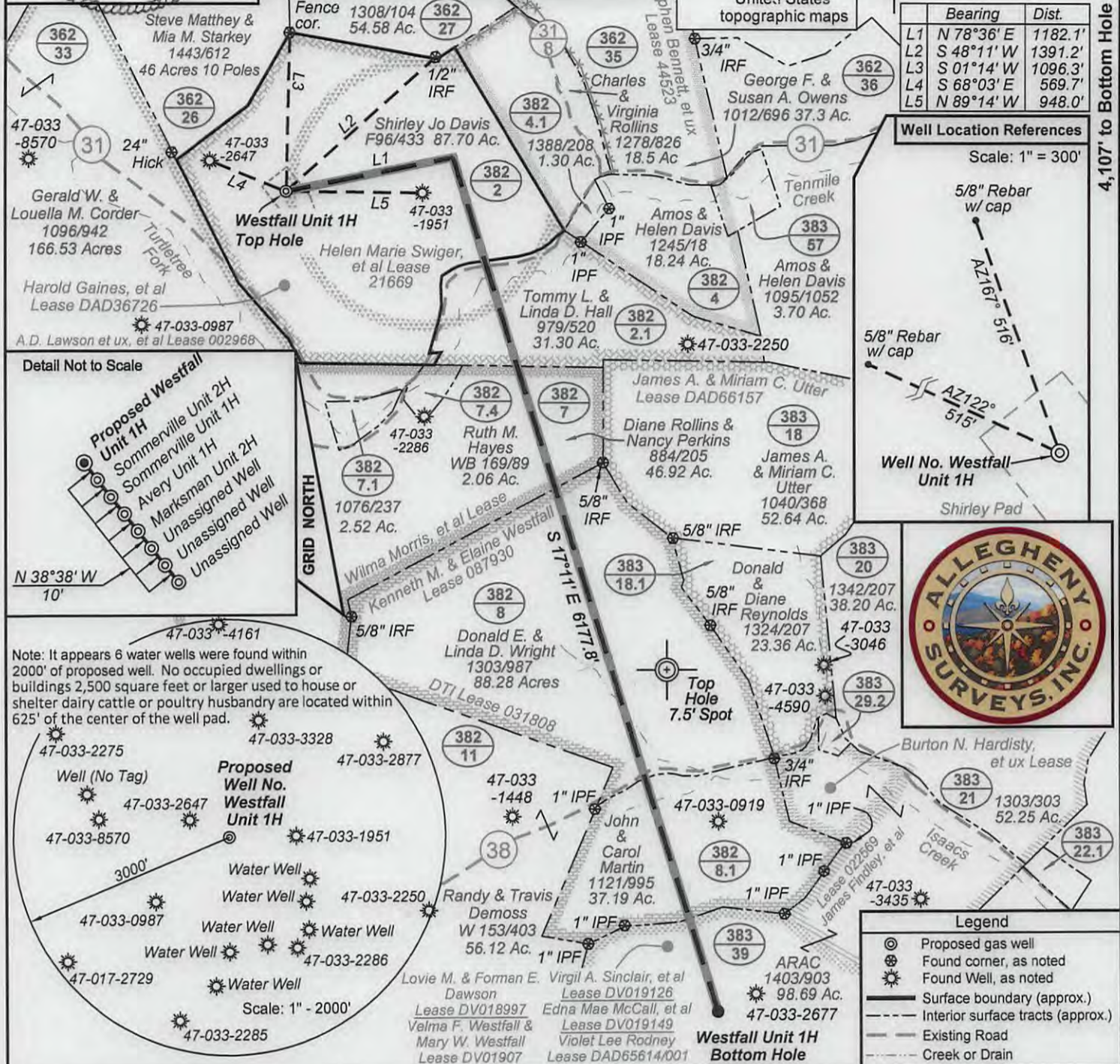
Notes:
 West Virginia Coordinate System of 1927, North Zone based upon Differential GPS Measurements.
 Well No. Westfall Unit 1H Top Hole coordinates are
 N: 261,127.80' Latitude: 39°12'44.75"
 E: 1,710,517.79' Longitude: 80°31'17.95"
 Bottom Hole coordinates are
 N: 255,459.56' Latitude: 39°11'49.06"
 E: 1,713,502.27' Longitude: 80°30'39.23"
UTM Zone 17, NAD 1983
 Top Hole Coordinates Bottom Hole Coordinates
 N: 4,340,469.676m N: 4,338,757.996m
 E: 541,312.533m E: 542,250.549m
 Plat orientation and corner and well references are based upon the grid north meridian.
 Well location references are based upon the magnetic meridian.

6,288' to Top Hole
 3,134' to Bottom Hole
 TOP HOLE LATITUDE 39 - 15 - 00
 BOTTOM HOLE LATITUDE 39 - 12 - 30

I, the undersigned, hereby certify that this plat is correct to the best of my knowledge and belief and shows all the information required by law and the rules issued and prescribed by the Department of Environmental Protection.

Dwayne D. Matheny
Dwayne D. Matheny, P.S. 2070

TOP & BOTTOM HOLE LONGITUDE 80 - 30 - 00



FILE NO: 198-36-U-12
 DRAWING NO: 198-12 Westfall Unit 1H
 SCALE: 1" = 1000'
 MINIMUM DEGREE OF ACCURACY: Submeter
 PROVEN SOURCE OF ELEVATION: WVDOT, Bridgeport, WV

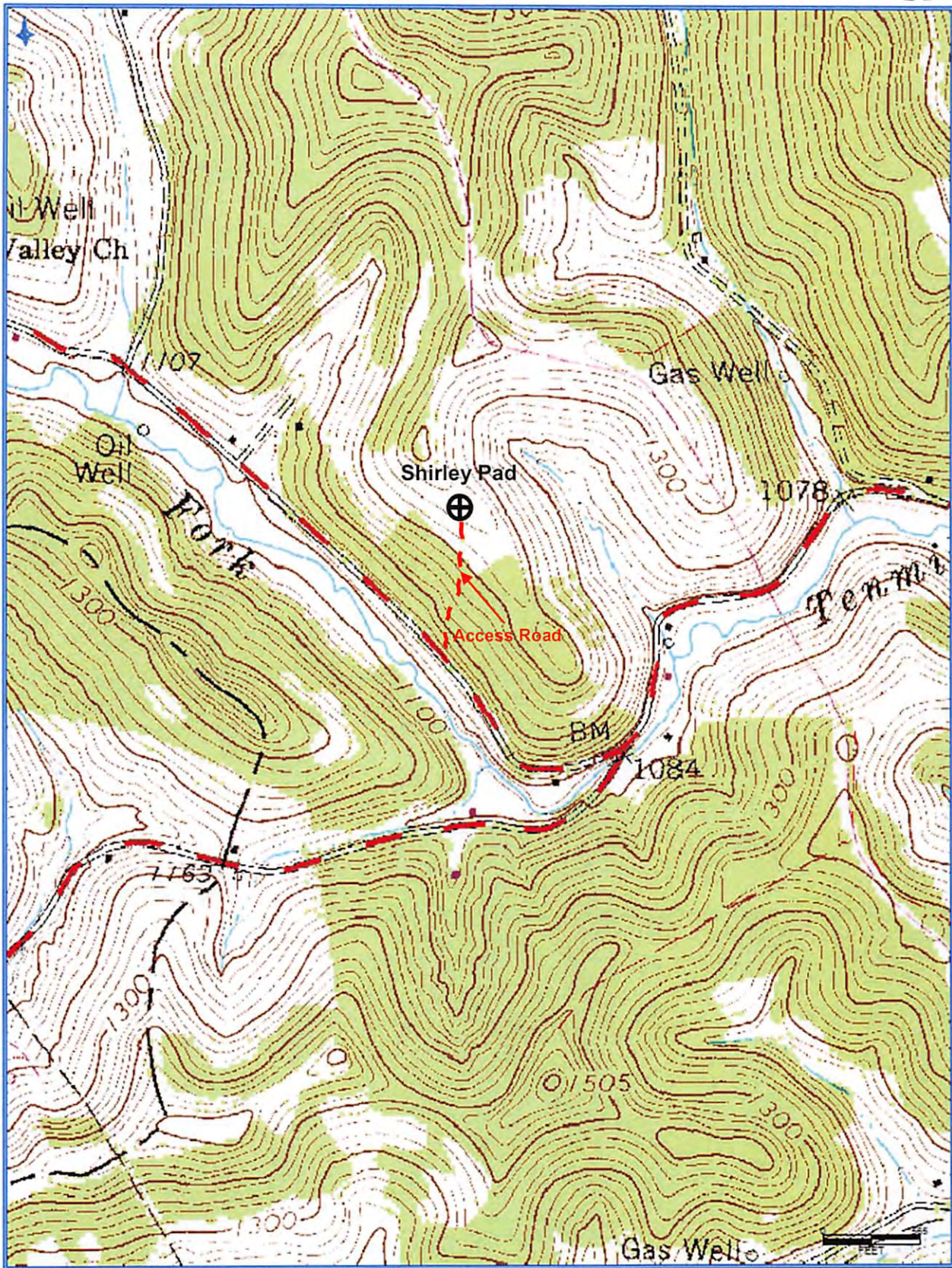
STATE OF WEST VIRGINIA
 DEPARTMENT OF ENVIRONMENTAL PROTECTION
OIL AND GAS DIVISION

DATE: September 20 2013
 OPERATOR'S WELL NO. Westfall Unit 1H
 API WELL NO
 47 - 033 - 05793H6A
 STATE COUNTY PERMIT

WELL TYPE: OIL GAS LIQUID INJECTION WASTE DISPOSAL
 (IF GAS) PRODUCTION: STORAGE DEEP SHALLOW
 LOCATION: ELEVATION: 1330' WATERSHED: Tenmile Creek QUADRANGLE: Big Isaac
 DISTRICT: Union COUNTY: Harrison
 SURFACE OWNER: Shirley Jo Davis LEASE #: DAD36726; 21669 087930 and 031808 DAD65614/001 ACREAGE: 87.70
 OIL & GAS ROYALTY OWNER: Harold Gaines, et al; Helen Marie Swiger, et al; Wilma Morris, et al LEASE #: DV018997, DV01907, DV019126, DV019149 ACREAGE: 139; 107; 130; 120
 PROPOSED WORK: DRILL CONVERT DRILL DEEPER FRACTURE OR STIMULATE PLUG OFF OLD FORMATION
 PERFORATE NEW FORMATION OTHER PHYSICAL CHANGE IN WELL (SPECIFY) 7,500' TVD
 PLUG AND ABANDON CLEAN OUT AND REPLUG TARGET FORMATION: Marcellus Shale ESTIMATED DEPTH: 14,200' MD

WELL OPERATOR: Antero Resources Corporation DESIGNATED AGENT: Dianna Stamper - CT Corporation System
 ADDRESS: 1625 17th Street ADDRESS: 5400 D Big Tyler Road
 Denver, CO 80202 Charleston, WV 25313

11/22/2013



Antero Resources Corporation

Appalachian Basin

Westfall Unit 1H

Harrison County

Quadrangle: Big Isaac

Watershed: Headwaters Tennile Creek

District: Union

Date: 9-11-2013

Received

OCT 4 2013