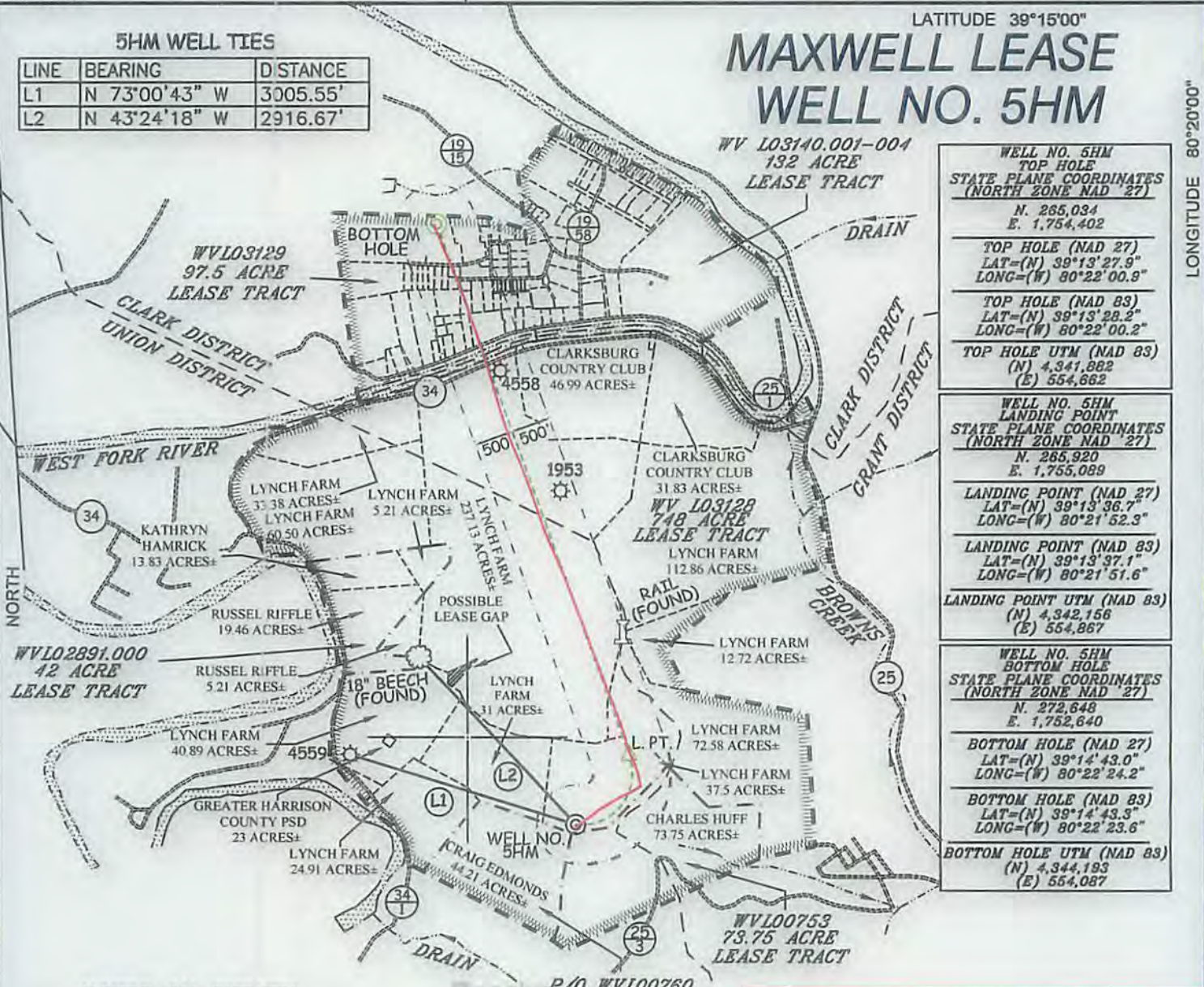


# MAXWELL LEASE WELL NO. 5HM

LONGITUDE 80°20'00"

### 5HM WELL TIES

LINE	BEARING	DISTANCE
L1	N 73°00'43" W	3005.55'
L2	N 43°24'18" W	2916.67'



WELL NO. 5HM TOP HOLE	
STATE PLANE COORDINATES (NORTH ZONE NAD 27)	
N. 265,034	E. 1,754,402
TOP HOLE (NAD 27)	
LAT=(N) 39°13'27.9"	LONG=(W) 80°22'00.9"
TOP HOLE (NAD 83)	
LAT=(N) 39°13'28.2"	LONG=(W) 80°22'00.2"
TOP HOLE UTM (NAD 83)	
(N) 4,341,882	(E) 554,662
WELL NO. 5HM LANDING POINT	
STATE PLANE COORDINATES (NORTH ZONE NAD 27)	
N. 265,920	E. 1,755,089
LANDING POINT (NAD 27)	
LAT=(N) 39°13'36.7"	LONG=(W) 80°21'52.3"
LANDING POINT (NAD 83)	
LAT=(N) 39°13'37.1"	LONG=(W) 80°21'51.6"
LANDING POINT UTM (NAD 83)	
(N) 4,342,156	(E) 554,867
WELL NO. 5HM BOTTOM HOLE	
STATE PLANE COORDINATES (NORTH ZONE NAD 27)	
N. 272,648	E. 1,752,640
BOTTOM HOLE (NAD 27)	
LAT=(N) 39°14'43.0"	LONG=(W) 80°22'24.2"
BOTTOM HOLE (NAD 83)	
LAT=(N) 39°14'43.3"	LONG=(W) 80°22'23.6"
BOTTOM HOLE UTM (NAD 83)	
(N) 4,344,193	(E) 554,087

### NOTES ON SURVEY

1. TIES TO WELLS, REFERENCES, AND CORNERS ARE BASED ON GRID NORTH FOR THE WV STATE PLANE COORDINATE SYSTEM NORTH ZONE NAD 27.
2. LEASE BOUNDARY SHOWN HEREON TAKEN FROM DEED BOOK 142 PAGE 484 AND ADJOINING DEEDS.
3. SURFACE OWNER AND ADJOINER INFORMATION TAKEN FROM THE ASSESSOR AND COUNTY CLERK RECORDS OF HARRISON COUNTY IN JULY, 2012.
4. WELL LAT./LONG. (NAD'27) ESTABLISHED BY DGPS(SURVEY GRADE).
5. AS DRILLED INFORMATION PROVIDED BY PDC MOUNTAINEER, LLC.

Received  
Office of Oil and Gas  
SEP 25 2015

### LEGEND

AS DRILLED	
PROPOSED	

### AS DRILLED COORDINATES FOR WELL NO. 5HM

(S.P.C. NORTH ZONE) (UTM(M) ZONE 17 NORTH)

NAD'27 S.P.C.(FT)	N. 265,034	E. 1,754,402
NAD'27 GEO.	LAT-(N) 39°13'27.9"	LONG-(W) 80°22'00.9"
NAD'83 GEO.	LAT-(N) 39°13'28.2"	LONG-(W) 80°22'00.2"
NAD'83 UTM (M)	N. 4,341,882	E. 554,662
BOTTOM HOLE		
NAD'27 S.P.C.(FT)	N. 272,642	E. 1,752,599
NAD'27 GEO.	LAT-(N) 39°14'42.9"	LONG-(W) 80°22'24.8"
NAD'83 GEO.	LAT-(N) 39°14'43.3"	LONG-(W) 80°22'24.1"
NAD'83 UTM (M)	N. 4,344,191	E. 554,075



I THE UNDERSIGNED, HEREBY CERTIFY THAT THIS PLAT IS CORRECT TO THE BEST OF MY KNOWLEDGE AND BELIEF AND SHOWS ALL THE INFORMATION REQUIRED BY LAW AND THE REGULATIONS ISSUED AND PRESCRIBED BY THE DIVISION OF ENVIRONMENTAL PROTECTION.

P.S. 677 *Gregory A. Smith*



(+) DENOTES LOCATION OF WELL ON UNITED STATES TOPOGRAPHIC MAPS.

DATE APRIL 3, 2013  
 REVISED DATE 09/03/13 & 06/10/15  
 OPERATORS WELL NO. MAXWELL 5HM  
 API WELL NO. 47 - 033 - 05743H  
 STATE COUNTY PERMIT

MINIMUM DEGREE OF ACCURACY 1/200 FILE NO. 8450P5HMASDRILLED  
 PROVEN SOURCE OF ELEVATION DGPS (SUBMETER MAPPING GRADE) SCALE 1" = 2,000'

STATE OF WEST VIRGINIA  
 DIVISION OF ENVIRONMENTAL PROTECTION  
 OFFICE OF OIL AND GAS



WELL TYPE: OIL  GAS  LIQUID INJECTION  WASTE DISPOSAL  IF "GAS" PRODUCTION  STORAGE  DEEP  SHALLOW

LOCATION: ELEVATION 1,457' WATERSHED WEST FORK RIVER DISTRICT UNION COUNTY HARRISON QUADRANGLE MOUNT CLARE 7.5'

SURFACE OWNER LYNCH FARM, LLC ACREAGE 37.5±  
 ROYALTY OWNER WBM HEIRS PROPERTIES, LLC ETAL ACREAGE 748, 42, 44.21, 73.75

PROPOSED WORK: DRILL  CONVERT  DRILL DEEPER  REDRILL  FRACTURE OR STIMULATE  PLUG OFF OLD FORMATION  PERFORATE NEW FORMATION  PLUG AND ABANDON  CLEAN OUT AND REPLUG  OTHER

PHYSICAL CHANGE IN WELL (SPECIFY) TARGET FORMATION MARCELLUS ESTIMATED DEPTH 7,590' TVD / TMD 15,481'

WELL OPERATOR PDC MOUNTAINEER, LLC DESIGNATED AGENT NATHAN SKEEN  
 ADDRESS 6031 WALLACE ROAD EXTENSION, SUITE 300 WEXFORD, PA 15090 ADDRESS 65 PROFESSIONAL PLACE, SUITE 200 BRIDGEPORT, WV 26330

COUNTY NAME PERMIT

10/30/2015