

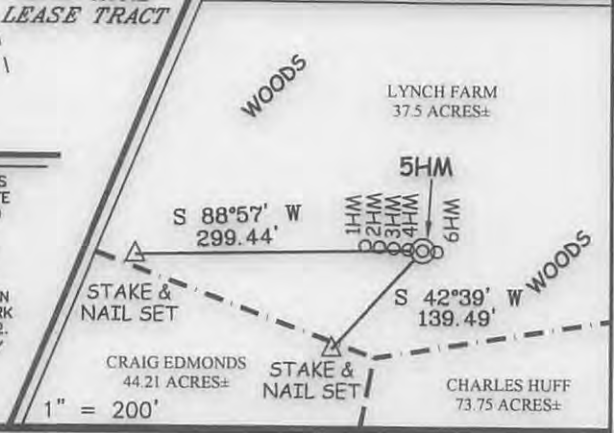
# MAXWELL LEASE WELL NO. 5HM

LINE	BEARING	DISTANCE
L1	N 73°00'43" W	3005.55'
L2	N 43°24'18" W	2916.67'
L3	N 20°00'00" W	7160.00'

<b>WELL NO. 5HM TOP HOLE</b> STATE PLANE COORDINATES (NORTH ZONE NAD '27) N. 265,034 E. 1,754,402 TOP HOLE (NAD 27) LAT=(N) 39°13'27.9" LONG=(W) 80°22'00.9" TOP HOLE (NAD 83) LAT=(N) 39°13'28.2" LONG=(W) 80°22'00.2" TOP HOLE UTM (NAD 83) (N) 4,341,882 (E) 554,662
<b>WELL NO. 5HM LANDING POINT</b> STATE PLANE COORDINATES (NORTH ZONE NAD '27) N. 265,920 E. 1,755,089 LANDING POINT (NAD 27) LAT=(N) 39°13'36.7" LONG=(W) 80°21'52.3" LANDING POINT (NAD 83) LAT=(N) 39°13'37.1" LONG=(W) 80°21'51.6" LANDING POINT UTM (NAD 83) (N) 4,342,156 (E) 554,867
<b>WELL NO. 5HM BOTTOM HOLE</b> STATE PLANE COORDINATES (NORTH ZONE NAD '27) N. 272,648 E. 1,752,640 BOTTOM HOLE (NAD 27) LAT=(N) 39°14'43.0" LONG=(W) 80°22'24.2" BOTTOM HOLE (NAD 83) LAT=(N) 39°14'43.3" LONG=(W) 80°22'23.6" BOTTOM HOLE UTM (NAD 83) (N) 4,344,193 (E) 554,087



## REFERENCES



## NOTES ON SURVEY

1. TIES TO WELLS, REFERENCES, AND CORNERS ARE BASED ON GRID NORTH FOR THE WV STATE PLANE COORDINATE SYSTEM NORTH ZONE NAD '27.
2. LEASE BOUNDARY SHOWN HEREON TAKEN FROM DEED BOOK 142 PAGE 484 AND ADJOINING DEEDS.
3. SURFACE OWNER AND ADJOINER INFORMATION TAKEN FROM THE ASSESSOR AND COUNTY CLERK RECORDS OF HARRISON COUNTY IN JULY, 2012.
4. WELL LAT./LONG. (NAD'27) ESTABLISHED BY DGPS(SURVEY GRADE).



I THE UNDERSIGNED, HEREBY CERTIFY THAT THIS PLAT IS CORRECT TO THE BEST OF MY KNOWLEDGE AND BELIEF AND SHOWS ALL THE INFORMATION REQUIRED BY LAW AND THE REGULATIONS ISSUED AND PRESCRIBED BY THE DIVISION OF ENVIRONMENTAL PROTECTION.

P.S. 677 *Gregory A. Smith*



(+) DENOTES LOCATION OF WELL ON UNITED STATES TOPOGRAPHIC MAPS.  
 DATE APRIL 3, 20 13  
 REVISED DATE SEPTEMBER 3, 20 13  
 OPERATORS WELL NO. MAXWELL 5HM  
 API WELL NO. 47 - 33 - MOD  
 STATE COUNTY PERMIT 05743 HGA

MINIMUM DEGREE OF ACCURACY 1 / 200 FILE NO. 7995P5HMR3(448-13)  
 PROVEN SOURCE OF ELEVATION DGPS (SUBMETER MAPPING GRADE) SCALE 1" = 2,000'

STATE OF WEST VIRGINIA  
 DIVISION OF ENVIRONMENTAL PROTECTION  
 OFFICE OF OIL AND GAS

WELL TYPE: OIL  GAS  LIQUID INJECTION  WASTE DISPOSAL  IF "GAS" PRODUCTION  STORAGE  DEEP  SHALLOW

LOCATION: ELEVATION 1,462' WATERSHED WEST FORK RIVER DISTRICT UNION COUNTY HARRISON QUADRANGLE MOUNT CLARE 7.5' SURFACE OWNER LYNCH FARM, LLC ACREAGE 37.5± ROYALTY OWNER WBM HEIRS PROPERTIES, LLC ETAL ACREAGE 748, 42, 44.21, 73.75, 97.5, & 132±

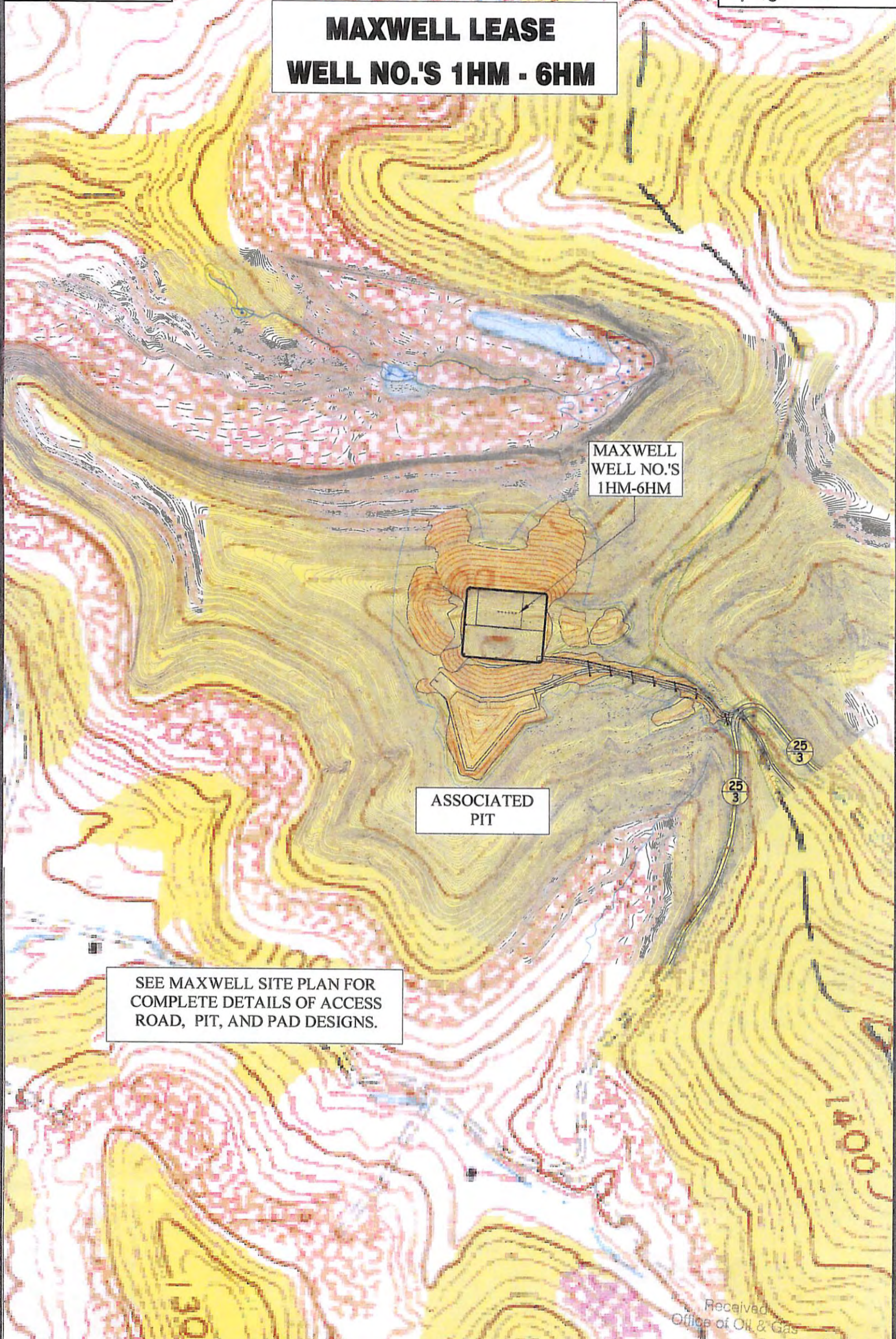
PROPOSED WORK: DRILL  CONVERT  DRILL DEEPER  REDRILL  FRACTURE OR STIMULATE  PLUG OFF OLD FORMATION  PERFORATE NEW FORMATION  PLUG AND ABANDON  CLEAN OUT AND REPLUG  OTHER  PHYSICAL CHANGE IN WELL (SPECIFY) TARGET FORMATION MARCELLUS ESTIMATED DEPTH 7,590' TVD / TMD 15,481'

WELL OPERATOR PDC MOUNTAINEER, LLC DESIGNATED AGENT JAMIE HAGA  
 ADDRESS 120 GENESIS BOULEVARD BRIDGEPORT, WV 26330 ADDRESS 120 GENESIS BOULEVARD BRIDGEPORT, WV 26330 11/08/2013

LONGITUDE 80°20'00"

COUNTY NAME PERMIT

**MAXWELL LEASE  
WELL NO.'S 1HM - 6HM**



MAXWELL  
WELL NO.'S  
1HM-6HM

ASSOCIATED  
PIT

SEE MAXWELL SITE PLAN FOR  
COMPLETE DETAILS OF ACCESS  
ROAD, PIT, AND PAD DESIGNS.

Received  
Office of Oil & Gas

Professional Energy Consultants  
A DIVISION OF SMITH LANG SURVEYING

SURVEYORS  
PROJECT MGMT. **SLS** ENGINEERS  
ENVIRONMENTAL

220 West Main St  
P.O. Box 150  
Cleveland, OH 43101  
(313) 462-5834

5605 Dales Bottom Road  
Shadyside, OH 43947  
(740) 671-9911

HONESTY. INTEGRITY. QUALITY.

TOPO SECTION OF USGS  
MOUNT CLARE 7.5' QUADRANGLE

APR 26 2013

**SCALE: 1"=500'**

0' 500' 1000'

11/08/2013

DRAWN BY C.P.M.	FILE NO. 7995	DATE 03-28-13	CADD FILE: 7995REC.DWG
--------------------	------------------	------------------	---------------------------