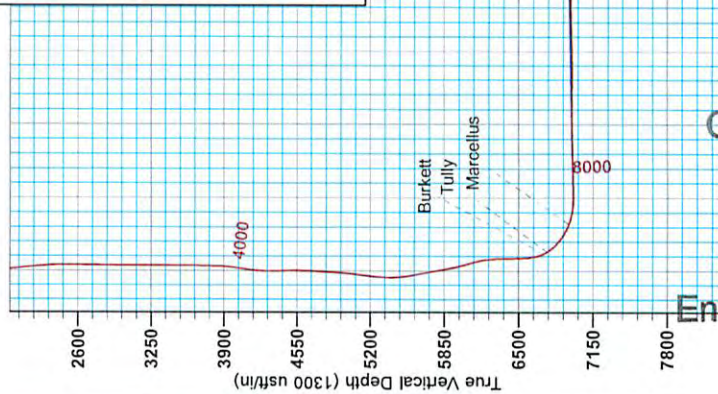




Antero Resources
Isaac Unit 1H
 Harrison County West Virginia
 Northing: 14249029.56
 Easting: 1791486.68
 As Drilled



RECEIVED
 Office of Oil and Gas
 MAY 26 2015
 WVA Department of
 Environmental Protection

06/05/2015

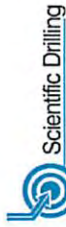
WELL DETAILS: Isaac Unit 1H
 Ground Level: 1100.0
 Elevation: 1791486.68
 Northing: 14249029.56
 Easting: 1791486.68
 30° 14' 19.720" N
 80° 27' 59.260" W
 Slot

REFERENCE INFORMATION

Coordinates: UTM
 Vertical (VD) Reference: Wellbore 1H, 1100.0 (Original Well Elev)
 Section (VS) Reference: Zone 18Q UTM
 Minimum Curvature
 Calculation Method: Minimum Curvature

PROJECT DETAILS: Harrison County West Virginia
 Geoidetic System: Universal Transverse Mercator (US Survey Feet)
 Datum: NAD 1983 (NAD83 CONUS)
 Ellipsoid: Clarke 1866
 Zone: Zone 17N (84 W to 78 W)
 System Datum: Mean Sea Level

Genie Lightfoot
 14.07, September 04, 2013
 Scientific Drilling
 421 South Eagle Lane
 Oklahoma City, OK

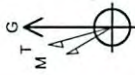


LEGEND

- Isaac Unit 1H, Original Wellpath, Plan 4 V0
- GT Post Unit 2H, Original Wellpath, Original Wellpath V0
- Post Unit 2H, Original Wellpath, Original Wellpath V0
- Post Unit 4H, Original Wellpath, Original Wellpath V0
- Post Unit 1H, Original Wellpath, Original Wellpath V0
- AA Post Unit 1H, Original Wellpath, Original Wellpath V0
- GT Post Unit 1H, Original Wellpath, Original Wellpath V0
- Post Unit 3H, Original Wellpath, Original Wellpath V0
- As Drilled

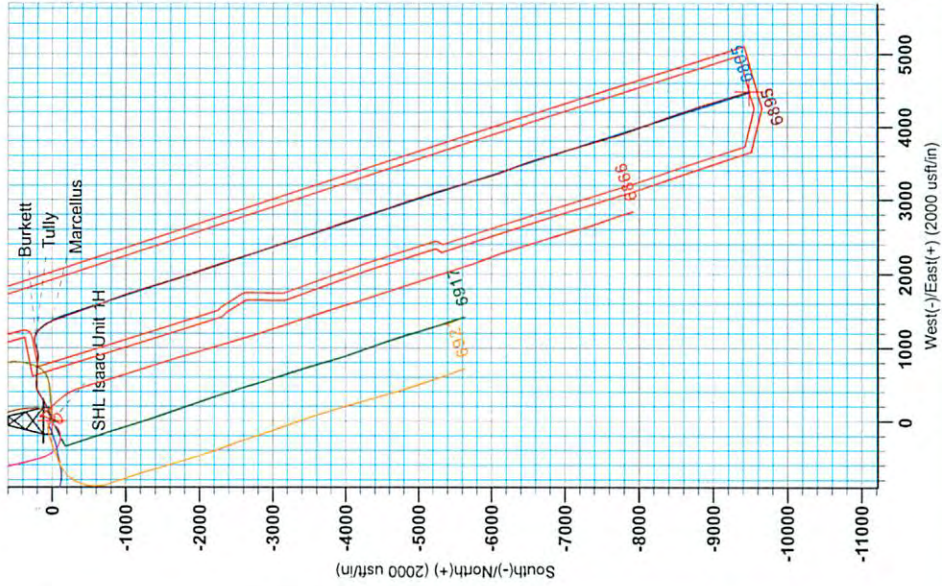
DESIGN TARGET DETAILS

Name	TVD	+N/S	+E/W	Northing	Easting	Latitude	Longitude
SHL Isaac Unit 1H	0.0	0.0	0.0	14249029.56	1791486.68	34° 16' 20.180" N	80° 27' 59.260" W
Actual BHL Isaac Unit 1H	685.1	-9480.5	4484.9	14239549.03	1795971.6339	32° 42' 17.117" N	80° 27' 2.970" W



To convert Magnetic North to Grid, Subtract 8.99°
 To convert True North to Grid, Subtract 0.34°

Azimuths to Grid North
 Magnetic North: -8.99°
 Dip Angle: 66.81°
 Date: 8/2/2013
 Model: IGRF2010





Antero Resources

Harrison County West Virginia
Post / Sperry 2 Pad
Isaac Unit 1H
Original Wellpath

Design: As Drilled

EOW Completion Report

04 September, 2013

RECEIVED
Office of Oil and Gas

MAY 26 2015

WV Department of
Environmental Protection



06/05/2015



EOW Completion Report



Company:	Antero Resources	Local Co-ordinate Reference:	Well Isaac Unit 1H
Project:	Harrison County West Virginia	TVD Reference:	Isaac Unit 1H GL 1169 @ 1191.0usft (Original We
Site:	Post / Sperry 2 Pad	MD Reference:	Isaac Unit 1H GL 1169 @ 1191.0usft (Original We
Well:	Isaac Unit 1H	North Reference:	Grid
Wellbore:	Original Wellpath	Survey Calculation Method:	Minimum Curvature
Design:	As Drilled	Database:	Oklahoma District

Project	Harrison County West Virginia, Harrison County, USA		
Map System:	Universal Transverse Mercator (US Survey Fee	System Datum:	Mean Sea Level
Geo Datum:	NAD 1927 (NADCON CONUS)		
Map Zone:	Zone 17N (84 W to 78 W)		

Site	Post / Sperry 2 Pad, Site Center: SHL of Post Unit 2H				
Site Position:		Northing:	14,249,069.68usft	Latitude:	39° 14' 17.116 N
From:	Map	Easting:	1,791,482.69usft	Longitude:	80° 27' 59.308 W
Position Uncertainty:	0.0 usft	Slot Radius:	13-3/16"	Grid Convergence:	0.34 °

Well	Isaac Unit 1H, Marcellus					
Well Position	+N/-S	0.0 usft	Northing:	14,249,029.56 usft	Latitude:	39° 14' 16.720 N
	+E/-W	0.0 usft	Easting:	1,791,486.68 usft	Longitude:	80° 27' 59.260 W
Position Uncertainty	2.0 usft		Wellhead Elevation:	1,191.0 usft	Ground Level:	1,169.0 usft

Wellbore	Original Wellpath
-----------------	-------------------

Magnetics	Model Name	Sample Date	Declination (°)	Dip Angle (°)	Field Strength (nT)
	IGRF2010	8/6/2013	-8.65	66.81	52,336

Design	As Drilled
---------------	------------

Audit Notes:					
Version:	1.0	Phase:	ACTUAL	Tie On Depth:	0.0
Vertical Section:	Depth From (TVD) (usft)	+N/-S (usft)	+E/-W (usft)	Direction (°)	
	0.0	0.0	0.0	162.00	

RECEIVED
Office of Oil and Gas
MAY 26 2015

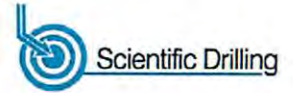
Survey Program	Date 9/4/2013				
From (usft)	To (usft)	Survey (Wellbore)	Tool Name	Description	
100.0	1,805.0	Survey #2 Gyro Inrun (Original Wellpath)	SDI Standard Keeper	Scientific Drilling Intl. Standard Wireline Keeper	
1,825.0	6,874.0	Survey #3 Def Gyro to Int (Original Wellpa	SDI Standard Keeper	Scientific Drilling Intl. Standard Wireline Keeper	
6,906.0	17,384.0	Survey #4 MWD (Original Wellpath)	SDI MWD	Scientific Drilling Intl. MWD - Standard ver 1.0.1	

WV Department of
Environmental Protection

MD (usft)	Inc (°)	Azi (azimuth) (°)	TVD (usft)	N/S (usft)	E/W (usft)	V. Sec (usft)	DLeg (°/100usft)
0.0	0.00	0.00	0.0	0.0	0.0	0.0	0.00
100.0	0.27	212.66	100.0	-0.2	-0.1	0.1	0.27
200.0	0.18	204.55	200.0	-0.5	-0.3	0.4	0.10
300.0	0.25	192.56	300.0	-0.9	-0.4	0.7	0.08
400.0	0.19	173.24	400.0	-1.3	-0.5	1.1	0.09
500.0	0.15	151.15	500.0	-1.6	-0.4	1.4	0.08
600.0	0.08	175.85	600.0	-1.7	-0.3	1.6	0.08
700.0	0.22	194.49	700.0	-2.0	-0.4	1.8	0.15
800.0	0.29	174.47	800.0	-2.4	-0.4	2.2	0.11
900.0	0.37	125.17	900.0	-2.9	-0.1	2.7	0.28



EOW Completion Report



Company:	Antero Resources	Local Co-ordinate Reference:	Well Isaac Unit 1H
Project:	Harrison County West Virginia	TVD Reference:	Isaac Unit 1H GL 1169 @ 1191.0usft (Original We
Site:	Post / Sperry 2 Pad	MD Reference:	Isaac Unit 1H GL 1169 @ 1191.0usft (Original We
Well:	Isaac Unit 1H	North Reference:	Grid
Wellbore:	Original Wellpath	Survey Calculation Method:	Minimum Curvature
Design:	As Drilled	Database:	Oklahoma District

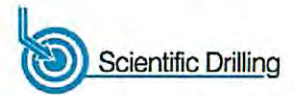
Survey

MD (usft)	Inc (°)	Azi (azimuth) (°)	TVD (usft)	N/S (usft)	E/W (usft)	V. Sec (usft)	DLeg (°/100usft)
1,000.0	0.14	145.97	1,000.0	-3.2	0.2	3.1	0.24
1,100.0	0.36	160.01	1,100.0	-3.6	0.4	3.5	0.23
1,200.0	0.34	132.33	1,200.0	-4.0	0.7	4.1	0.17
1,300.0	0.08	121.78	1,300.0	-4.3	1.0	4.4	0.26
1,400.0	0.16	310.42	1,400.0	-4.2	1.0	4.3	0.24
1,500.0	0.06	299.79	1,500.0	-4.1	0.8	4.2	0.10
1,600.0	0.20	97.77	1,600.0	-4.1	1.0	4.2	0.26
1,700.0	0.23	95.38	1,700.0	-4.2	1.3	4.4	0.03
1,800.0	0.30	49.00	1,800.0	-4.0	1.7	4.3	0.22
1,805.0	0.24	75.24	1,805.0	-4.0	1.7	4.3	2.72
1,958.0	4.76	150.88	1,957.8	-9.5	5.1	10.6	3.08
2,055.0	5.76	166.14	2,054.4	-17.7	8.3	19.4	1.76
2,151.0	6.66	175.49	2,149.8	-27.9	9.9	29.6	1.41
2,215.0	6.41	187.25	2,213.4	-35.2	9.7	36.4	2.12
2,343.0	5.47	212.33	2,340.8	-47.4	5.5	46.8	2.14
2,440.0	2.26	233.23	2,437.5	-52.5	1.5	50.4	3.56
2,508.0	1.66	277.45	2,505.5	-53.1	-0.5	50.4	2.32
2,792.0	0.51	302.11	2,789.4	-51.9	-5.7	47.6	0.43
3,083.0	0.29	325.49	3,080.4	-50.6	-7.2	45.9	0.69
3,360.0	0.22	352.40	3,357.4	-49.5	-7.6	44.7	0.05
3,648.0	0.52	297.01	3,645.4	-48.4	-8.9	43.3	0.15
3,778.0	0.77	283.00	3,775.4	-47.9	-10.3	42.4	0.23
3,875.0	3.62	354.85	3,872.3	-44.7	-11.2	39.1	3.57
4,002.0	11.58	32.76	3,998.2	-30.0	-4.6	37.9	7.09
4,098.0	16.32	40.03	4,091.3	-11.5	9.3	33.8	5.25
4,194.0	14.55	45.60	4,183.9	7.2	26.6	1.3	2.40
4,291.0	14.13	69.65	4,277.9	19.9	46.4	-4.6	6.11
4,387.0	14.20	78.16	4,371.0	26.4	68.9	-3.8	2.17
4,483.0	16.53	77.26	4,463.6	31.8	93.8	-1.3	2.44
4,580.0	20.15	71.70	4,555.7	40.1	123.1	-0.1	4.14
4,676.0	22.53	68.25	4,645.1	52.1	155.9	-1.4	2.80
4,772.0	20.11	58.84	4,734.5	67.5	187.1	-6.3	4.36
4,869.0	18.55	59.33	4,826.0	84.0	214.6	-13.5	1.62
4,965.0	21.29	66.72	4,916.3	98.6	243.8	-18.5	3.87
5,062.0	28.13	60.50	5,004.4	116.9	279.9	-24.7	7.53
5,156.0	24.04	51.78	5,088.8	139.7	314.3	-35.7	5.95
5,252.0	23.45	56.32	5,176.7	162.4	345.5	-47.6	2.00
5,347.0	24.86	60.94	5,263.4	182.5	378.7	-56.6	2.48
5,443.0	25.02	68.58	5,350.5	199.8	415.3	-61.7	3.36
5,539.0	24.37	81.49	5,437.8	210.1	453.8	-59.6	5.65
5,633.0	26.48	89.23	5,522.7	213.3	493.9	-50.2	4.18
5,728.0	26.45	92.77	5,607.7	212.5	536.3	-36.4	1.66
5,823.0	28.22	93.26	5,692.1	210.2	579.8	-20.8	1.88
5,919.0	28.99	93.72	5,776.4	207.4	625.7	-3.9	0.83
6,014.0	29.54	91.00	5,859.3	205.5	672.1	12.2	1.51

RECEIVED
Office of Oil and Gas
MAY 26 2015
West Virginia Department of Environmental Protection



EOW Completion Report



Company:	Antero Resources	Local Co-ordinate Reference:	Well Isaac Unit 1H
Project:	Harrison County West Virginia	TVD Reference:	Isaac Unit 1H GL 1169 @ 1191.0usft (Original We
Site:	Post / Sperry 2 Pad	MD Reference:	Isaac Unit 1H GL 1169 @ 1191.0usft (Original We
Well:	Isaac Unit 1H	North Reference:	Grid
Wellbore:	Original Wellpath	Survey Calculation Method:	Minimum Curvature
Design:	As Drilled	Database:	Oklahoma District

Survey								
MD (usft)	Inc (°)	Azi (azimuth) (°)	TVD (usft)	N/S (usft)	E/W (usft)	V. Sec (usft)	DLeg (°/100usft)	
6,110.0	30.89	91.13	5,942.2	204.6	720.4	28.0	1.41	
6,206.0	34.09	97.86	6,023.2	200.5	771.7	47.8	5.02	
6,331.0	34.85	97.22	6,126.3	191.2	841.8	78.3	0.67	
6,428.0	33.62	85.44	6,206.5	189.8	896.2	96.4	6.94	
6,524.0	31.85	78.43	6,287.3	197.0	947.5	105.4	4.36	
6,618.0	29.94	75.18	6,368.0	208.0	994.5	109.5	2.70	
6,714.0	27.48	73.51	6,452.2	220.4	1,038.9	111.4	2.70	
6,810.0	25.93	73.75	6,537.9	232.6	1,080.3	112.6	1.62	
6,842.0	25.46	79.86	6,566.8	235.7	1,093.8	113.8	8.40	
6,874.0	25.61	86.34	6,595.7	237.4	1,107.4	116.4	8.74	
6,906.0	26.73	92.94	6,624.4	237.5	1,121.5	120.7	9.74	
6,938.0	29.03	100.31	6,652.7	235.7	1,136.4	127.0	12.94	
6,970.0	31.34	106.70	6,680.3	231.9	1,152.0	135.4	12.36	
7,002.0	33.81	112.77	6,707.3	226.1	1,168.2	146.0	12.79	
7,018.0	35.34	115.67	6,720.5	222.4	1,176.4	152.1	14.05	
Burkett								
7,033.0	36.84	118.19	6,732.6	218.4	1,184.3	158.3	14.05	
7,057.0	39.65	120.34	6,751.5	211.1	1,197.3	169.2	12.94	
Tully								
7,065.0	40.59	121.00	6,757.6	208.5	1,201.7	173.1	12.94	
7,097.0	43.92	125.39	6,781.3	196.7	1,219.7	189.9	13.90	
7,129.0	46.43	129.97	6,803.8	182.8	1,237.6	208.6	12.83	
7,161.0	49.68	134.45	6,825.2	166.8	1,255.2	229.3	14.54	
7,192.0	52.31	138.20	6,844.7	149.4	1,271.8	251.0	12.66	
7,224.0	55.29	143.07	6,863.6	129.4	1,288.2	275.0	15.41	
7,256.0	57.95	147.19	6,881.2	107.5	1,303.4	300.6	13.59	
7,289.0	58.81	148.83	6,898.5	83.6	1,318.3	327.8	4.97	
7,321.0	62.70	151.06	6,914.2	59.5	1,332.3	355.1	13.59	
7,353.0	66.48	152.82	6,927.9	34.0	1,345.9	383.6	12.81	
7,385.0	69.90	155.21	6,939.8	7.3	1,358.9	413.0	12.74	
7,389.0	70.25	155.39	6,941.2	3.8	1,360.5	416.7	9.73	
Marcellus								
7,417.0	72.72	156.60	6,950.1	-20.4	1,371.3	419.2	9.73	
7,449.0	75.45	159.23	6,958.8	-48.9	1,382.8	473.8	11.63	
7,482.0	78.71	161.79	6,966.2	-79.2	1,393.6	506.0	12.44	
7,514.0	81.53	162.22	6,971.7	-109.2	1,403.3	537.5	8.91	
7,546.0	85.39	161.62	6,975.3	-139.4	1,413.2	569.3	12.21	
7,567.0	87.58	161.17	6,976.6	-159.3	1,419.8	590.3	10.65	
7,663.0	90.92	162.13	6,977.9	-250.4	1,450.1	686.2	3.62	
7,760.0	92.33	159.76	6,975.1	-342.0	1,481.7	783.2	2.84	
7,856.0	88.89	158.68	6,974.1	-431.8	1,515.8	879.0	3.76	
7,952.0	91.71	160.11	6,973.6	-521.6	1,549.5	974.9	3.29	
8,049.0	90.92	159.76	6,971.4	-612.7	1,582.8	1,071.8	0.89	
8,145.0	91.01	159.59	6,969.8	-702.7	1,616.2	1,167.7	0.20	
8,242.0	90.48	159.15	6,968.5	-793.5	1,650.3	1,264.6	0.71	

RECEIVED
Office of Oil and Gas
MAY 26 2015
WV Department of Environmental Protection



EOW Completion Report



Company:	Antero Resources	Local Co-ordinate Reference:	Well Isaac Unit 1H
Project:	Harrison County West Virginia	TVD Reference:	Isaac Unit 1H GL 1169 @ 1191.0usft (Original We
Site:	Post / Sperry 2 Pad	MD Reference:	Isaac Unit 1H GL 1169 @ 1191.0usft (Original We
Well:	Isaac Unit 1H	North Reference:	Grid
Wellbore:	Original Wellpath	Survey Calculation Method:	Minimum Curvature
Design:	As Drilled	Database:	Oklahoma District

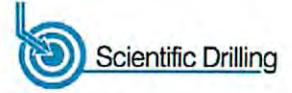
Survey

MD (usft)	Inc (°)	Azi (azimuth) (°)	TVD (usft)	N/S (usft)	E/W (usft)	V. Sec (usft)	DLeg (°/100usft)
8,338.0	90.31	162.31	6,967.8	-884.1	1,682.0	1,360.6	3.30
8,434.0	90.13	161.61	6,967.5	-975.4	1,711.7	1,456.6	0.75
8,530.0	89.34	160.02	6,967.9	-1,066.0	1,743.3	1,552.6	1.85
8,626.0	89.96	162.13	6,968.5	-1,156.8	1,774.4	1,648.5	2.29
8,722.0	89.25	162.84	6,969.2	-1,248.4	1,803.3	1,744.5	1.05
8,818.0	91.19	163.28	6,968.8	-1,340.2	1,831.3	1,840.5	2.07
8,914.0	90.22	164.86	6,967.6	-1,432.5	1,857.6	1,936.4	1.93
9,011.0	91.89	163.19	6,965.8	-1,525.7	1,884.3	2,033.4	2.43
9,107.0	91.45	163.19	6,963.0	-1,617.6	1,912.1	2,129.3	0.46
9,203.0	90.13	159.76	6,961.7	-1,708.6	1,942.6	2,225.3	3.83
9,299.0	91.71	160.64	6,960.2	-1,798.9	1,975.1	2,321.2	1.88
9,395.0	91.71	161.69	6,957.3	-1,889.7	2,006.0	2,417.1	1.09
9,492.0	91.45	161.43	6,954.6	-1,981.7	2,036.7	2,514.1	0.38
9,587.0	91.45	160.99	6,952.2	-2,071.6	2,067.3	2,609.1	0.46
9,683.0	91.54	162.57	6,949.7	-2,162.8	2,097.3	2,705.0	1.65
9,779.0	91.19	161.61	6,947.4	-2,254.1	2,126.8	2,801.0	1.06
9,876.0	91.19	161.52	6,945.4	-2,346.1	2,157.5	2,898.0	0.09
9,972.0	90.75	162.31	6,943.8	-2,437.3	2,187.3	2,994.0	0.94
10,068.0	91.71	161.78	6,941.7	-2,528.6	2,216.9	3,089.9	1.14
10,165.0	92.07	163.54	6,938.5	-2,621.2	2,245.8	3,186.9	1.85
10,261.0	90.57	162.40	6,936.3	-2,712.9	2,273.9	3,282.8	1.96
10,358.0	90.31	162.57	6,935.6	-2,805.4	2,303.1	3,379.8	0.32
10,453.0	90.57	162.31	6,934.8	-2,896.0	2,331.7	3,474.8	0.39
10,550.0	90.66	162.13	6,933.8	-2,988.4	2,361.3	3,571.8	0.21
10,646.0	90.92	162.05	6,932.5	-3,079.7	2,390.9	3,667.8	0.28
10,743.0	91.89	161.17	6,930.1	-3,171.7	2,421.5	3,764.8	1.35
10,839.0	90.92	160.11	6,927.8	-3,262.3	2,453.3	3,860.7	1.50
10,936.0	89.56	161.81	6,927.3	-3,354.0	2,484.9	3,957.7	2.24
11,032.0	90.66	161.26	6,927.2	-3,445.0	2,515.3	4,053.7	1.28
11,129.0	91.80	162.05	6,925.1	-3,537.1	2,545.8	4,150.7	1.43
11,225.0	91.28	162.40	6,922.5	-3,628.4	2,575.1	4,246.6	0.65
11,321.0	91.10	162.75	6,920.5	-3,720.0	2,603.9	4,342.6	0.91
11,417.0	91.10	161.26	6,918.7	-3,811.3	2,633.5	4,438.6	1.55
11,512.0	90.75	160.64	6,917.1	-3,901.1	2,664.5	4,533.5	0.75
11,609.0	90.75	162.31	6,915.9	-3,993.1	2,695.3	4,630.5	1.72
11,705.0	91.45	162.84	6,914.0	-4,084.6	2,724.1	4,726.5	0.91
11,802.0	90.31	160.55	6,912.5	-4,176.7	2,754.6	4,823.5	2.64
11,898.0	90.84	162.75	6,911.6	-4,267.8	2,784.8	4,919.5	0.91
11,994.0	91.98	163.28	6,909.2	-4,359.6	2,812.8	5,015.5	0.91
12,091.0	92.07	162.84	6,905.8	-4,452.3	2,841.1	5,112.3	0.46
12,187.0	92.24	161.78	6,902.2	-4,543.7	2,870.2	5,208.3	1.12
12,284.0	91.68	160.59	6,898.8	-4,635.5	2,901.5	5,305.2	1.36
12,380.0	91.36	161.17	6,896.3	-4,726.2	2,932.9	5,401.2	0.69
12,471.0	89.78	160.64	6,895.4	-4,812.1	2,962.7	5,492.1	1.83

RECEIVED
Office of Oil and Gas
MAY 26 2013
WV Department of
Environmental Protection



EOW Completion Report



Company:	Antero Resources	Local Co-ordinate Reference:	Well Isaac Unit 1H
Project:	Harrison County West Virginia	TVD Reference:	Isaac Unit 1H GL 1169 @ 1191.0usft (Original We
Site:	Post / Sperry 2 Pad	MD Reference:	Isaac Unit 1H GL 1169 @ 1191.0usft (Original We
Well:	Isaac Unit 1H	North Reference:	Grid
Wellbore:	Original Wellpath	Survey Calculation Method:	Minimum Curvature
Design:	As Drilled	Database:	Oklahoma District

Survey

MD (usft)	Inc (°)	Azi (azimuth) (°)	TVD (usft)	N/S (usft)	E/W (usft)	V. Sec (usft)	DLeg (°/100usft)
12,563.0	90.84	162.31	6,894.9	-4,899.4	2,991.9	5,584.1	2.15
12,654.0	90.13	159.85	6,894.1	-4,985.4	3,021.4	5,675.1	2.81
12,745.0	90.75	161.87	6,893.4	-5,071.4	3,051.2	5,766.1	2.32
12,837.0	89.34	161.87	6,893.4	-5,158.8	3,079.9	5,858.1	1.53
12,928.0	90.31	161.69	6,893.6	-5,245.3	3,108.3	5,949.1	1.08
13,019.0	89.96	165.39	6,893.4	-5,332.5	3,134.1	6,040.0	4.08
13,110.0	90.66	163.54	6,892.9	-5,420.2	3,158.5	6,130.9	2.17
13,202.0	91.11	164.16	6,891.5	-5,508.6	3,184.0	6,222.9	0.83
13,292.0	90.40	163.80	6,890.3	-5,595.0	3,208.9	6,312.8	0.88
13,384.0	90.48	164.33	6,889.6	-5,683.5	3,234.1	6,404.7	0.58
13,474.0	90.13	163.54	6,889.1	-5,770.0	3,259.0	6,494.7	0.96
13,571.0	89.43	163.45	6,889.5	-5,863.0	3,286.6	6,591.7	0.73
13,667.0	90.92	162.49	6,889.2	-5,954.8	3,314.7	6,687.6	1.85
13,764.0	90.84	163.19	6,887.7	-6,047.5	3,343.3	6,784.6	0.73
13,860.0	91.54	159.23	6,885.7	-6,138.3	3,374.2	6,880.6	4.19
13,956.0	91.10	159.67	6,883.5	-6,228.2	3,407.9	6,976.4	0.65
14,052.0	90.48	158.44	6,882.2	-6,317.8	3,442.2	7,072.3	1.43
14,148.0	89.34	158.88	6,882.3	-6,407.2	3,477.2	7,168.1	1.27
14,245.0	90.40	161.96	6,882.6	-6,498.6	3,509.7	7,265.1	3.36
14,341.0	89.43	161.53	6,882.7	-6,589.8	3,539.8	7,361.1	1.11
14,438.0	90.84	164.68	6,882.5	-6,682.6	3,567.9	7,458.1	3.56
14,533.0	89.52	161.87	6,882.2	-6,773.5	3,595.3	7,553.0	3.27
14,630.0	88.55	161.43	6,883.8	-6,865.6	3,625.8	7,650.0	1.10
14,726.0	89.78	164.07	6,885.2	-6,957.3	3,654.3	7,746.0	3.03
14,822.0	89.78	163.36	6,885.6	-7,049.4	3,681.2	7,841.9	0.74
14,918.0	89.43	165.03	6,886.2	-7,141.8	3,707.3	7,937.9	1.78
15,015.0	90.48	163.19	6,886.3	-7,235.1	3,733.9	8,034.8	2.18
15,111.0	90.22	163.45	6,885.7	-7,327.0	3,761.4	8,130.8	0.38
15,208.0	89.87	163.19	6,885.7	-7,419.9	3,789.3	8,227.7	0.45
15,304.0	89.34	162.40	6,886.3	-7,511.6	3,817.7	8,323.7	0.99
15,400.0	89.60	162.22	6,887.2	-7,603.1	3,846.8	8,419.7	0.33
15,497.0	90.66	163.19	6,887.0	-7,695.7	3,875.7	8,516.7	1.48
15,593.0	91.10	163.45	6,885.5	-7,787.7	3,903.2	8,612.7	0.53
15,690.0	91.80	159.94	6,883.1	-7,879.7	3,933.7	8,709.6	3.69
15,786.0	90.40	158.44	6,881.2	-7,969.4	3,967.8	8,805.5	2.14
15,883.0	90.04	159.85	6,880.8	-8,060.1	4,002.3	8,902.4	1.50
15,979.0	89.78	160.20	6,881.0	-8,150.3	4,035.1	8,998.9	0.45
16,076.0	89.60	158.53	6,881.5	-8,241.1	4,069.3	9,095.2	1.73
16,172.0	89.96	160.29	6,881.9	-8,330.9	4,103.1	9,191.1	0.87
16,269.0	90.40	159.23	6,881.6	-8,421.9	4,136.6	9,288.0	1.18
16,365.0	88.99	160.02	6,882.1	-8,511.9	4,170.0	9,383.9	1.68
16,461.0	89.08	160.73	6,883.7	-8,602.3	4,202.3	9,479.9	0.75
16,558.0	88.46	158.18	6,885.8	-8,693.1	4,236.3	9,576.7	2.70
16,654.0	89.60	161.43	6,887.4	-8,783.2	4,269.4	9,672.6	3.59

RECEIVED
Office of Oil and Gas
MAY 26 2015
WV Department of
Environmental Protection



EOW Completion Report



Company:	Antero Resources	Local Co-ordinate Reference:	Well Isaac Unit 1H
Project:	Harrison County West Virginia	TVD Reference:	Isaac Unit 1H GL 1169 @ 1191.0usft (Original We
Site:	Post / Sperry 2 Pad	MD Reference:	Isaac Unit 1H GL 1169 @ 1191.0usft (Original We
Well:	Isaac Unit 1H	North Reference:	Grid
Wellbore:	Original Wellpath	Survey Calculation Method:	Minimum Curvature
Design:	As Drilled	Database:	Oklahoma District

MD (usft)	Inc (°)	Azi (azimuth) (°)	TVD (usft)	N/S (usft)	E/W (usft)	V. Sec (usft)	DLeg (°/100usft)
16,751.0	88.55	163.45	6,889.0	-8,875.7	4,298.7	9,769.6	2.35
16,847.0	88.72	163.80	6,891.3	-8,967.7	4,325.7	9,865.6	0.41
16,943.0	89.08	162.49	6,893.1	-9,059.6	4,353.6	9,961.5	1.41
17,039.0	89.69	163.98	6,894.1	-9,151.5	4,381.3	10,057.5	1.68
17,135.0	89.69	162.84	6,894.7	-9,243.5	4,408.7	10,153.5	1.19
17,231.0	89.87	162.66	6,895.0	-9,335.2	4,437.1	10,249.4	0.27
17,337.0	90.04	161.34	6,895.1	-9,436.0	4,469.9	10,355.4	1.26
17,384.0	90.04	161.34	6,895.1	-9,480.5	4,484.9	10,402.4	0.00

Measured Depth (usft)	Vertical Depth (usft)	Local Coordinates		Comment
		+N/-S (usft)	+E/-W (usft)	
7,018.0	6,720.5	222.4	1,176.4	Burkett
7,057.0	6,751.5	211.1	1,197.3	Tully
7,389.0	6,941.2	3.8	1,360.5	Marcellus

Checked By: _____ Approved By: _____ Date: _____

RECEIVED
Office of Oil and Gas
MAY 26 2015
WV Department of
Environmental Protection