



Antero Resources
 Gideon Unit 1H
 Harrison County West Virginia
 Northing: 14254963.59
 Easting: 1768591.64
 As Drilled



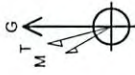
Genie Lightfoot
 Scientific Drilling
 421 South Eagle Lane
 Oklahoma City Oklahoma
 405-787-3663

REFERENCE INFORMATION

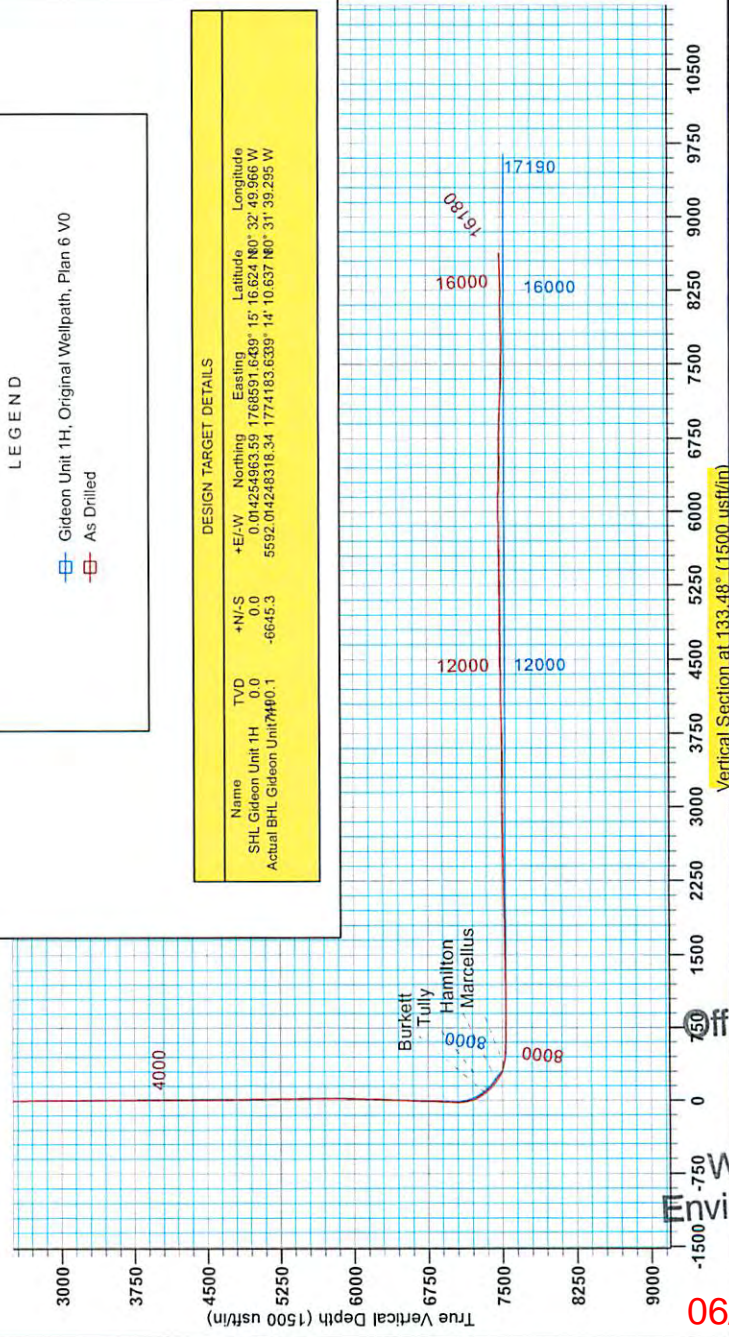
Coordinates: NAD 83
 Section (V3) Reference: SHL-GID-1H
 Vertical (V3) Reference: Gideon Unit 1H (SL 1437.27 KB @ 1476.0 uft)
 Measurement Method: Minimum Curvature
 Calculation Method: Minimum Curvature

WELL DETAILS: Gideon Unit 1H

+N/S +E/W Northing Existing Longitude
 0.0 0.0 14254963.59 1768591.64 15° 10' 02.48" 32' 49.966" W



To convert Magnetic North to Grid, Subtract 8.88°
 To convert True North to Grid, Subtract 0.29°
 Azimuths to Grid North
 True North - 0.29°
 Magnetic North - 8.88°
 Magnetic Field
 Strength: 52349.5 nT
 Dip Angle: 66.83°
 Date: 8/15/2013
 Model: IGRF2010



DESIGN TARGET DETAILS

Name	TVD	+N/S	+E/W	Northing	Easting	Latitude	Longitude
SHL Gideon Unit 1H	0.0	0.0	0.0	14254963.59	1768591.64	15° 16' 02.48" N	32° 49' 966" W
Actual BHL Gideon Unit 1H	740.1	-6645.3	5592.0	14248318.34	1774183.63	14° 10' 6.37" N	31° 39' 295" W

LEGEND

- Gideon Unit 1H, Original Wellpath, Plan 6 V0
- As Drilled

RECEIVED
 Office of Oil and Gas

MAY 26 2015

WV Department
 Environmental Protection

06/05/2015



Antero Resources

Harrison County West Virginia
Gideon/Varner/Plaughter/Lowndes Pad
Gideon Unit 1H
Original Wellpath

Design: As Drilled

EOW Completion Report

20 September, 2013

RECEIVED
Office of Oil and Gas

MAY 26 2015

WV Department of
Environmental Protection



Scientific Drilling

06/05/2015



EOW Completion Report



Company:	Antero Resources	Local Co-ordinate Reference:	Well Gideon Unit 1H
Project:	Harrison County West Virginia	TVD Reference:	Gideon Unit 1H GL 1453' + 23' KB @ 1476.0usft
Site:	Gideon/Varner/Plaughner/Lowndes Pad	MD Reference:	Gideon Unit 1H GL 1453' + 23' KB @ 1476.0usft
Well:	Gideon Unit 1H	North Reference:	Grid
Wellbore:	Original Wellpath	Survey Calculation Method:	Minimum Curvature
Design:	As Drilled	Database:	Oklahoma District

Project	Harrison County West Virginia, Harrison County, USA		
Map System:	Universal Transverse Mercator (US Survey Feet)	System Datum:	Mean Sea Level
Geo Datum:	NAD 1927 (NADCON CONUS)		
Map Zone:	Zone 17N (84 W to 78 W)		

Site	Gideon/Varner/Plaughner/Lowndes Pad			
Site Position:	Northing:	14,254,963.59 usft	Latitude:	39° 15' 16.624 N
From: Map	Easting:	1,768,591.64 usft	Longitude:	80° 32' 49.966 W
Position Uncertainty: 0.0 usft	Slot Radius:	13-3/16"	Grid Convergence:	0.29 °

Well	Gideon Unit 1H, Marcellus			
Well Position	+N/-S	0.0 usft	Northing:	14,254,963.59 usft
	+E/-W	0.0 usft	Easting:	1,768,591.64 usft
Position Uncertainty	2.0 usft	Wellhead Elevation:	1,476.0 usft	Ground Level:
				1,453.0 usft

Wellbore	Original Wellpath			
-----------------	-------------------	--	--	--

Magnetics	Model Name	Sample Date	Declination (°)	Dip Angle (°)	Field Strength (nT)
	IGRF2010	8/15/2013	-8.60	66.83	52,348

Design	As Drilled			
---------------	------------	--	--	--

Audit Notes:					
Version:	1.0	Phase:	ACTUAL	Tie On Depth:	0.0

Vertical Section:	Depth From (TVD) (usft)	+N/-S (usft)	+E/-W (usft)	Direction (°)
	0.0	0.0	0.0	133.48

Survey Program	Date	9/20/2013		
From (usft)	To (usft)	Survey (Wellbore)	Tool Name	Description
100.0	4,945.1	Survey #1 Def Gyro (Original Wellpath)	SDI Standard Keeper	Scientific Drilling Intl. Standard Wireline Keeper
5,000.0	7,145.2	Survey #3 Def Gyro to KOP (Original Well)	SDI Standard Keeper	Scientific Drilling Intl. Standard Wireline Keeper
7,212.0	16,180.0	Survey #2 MWD (Original Wellpath)	SDI MWD	Scientific Drilling Intl. MWD - Standard ver 1.0.1

MD (usft)	Inc (°)	Azi (azimuth) (°)	TVD (usft)	N/S (usft)	E/W (usft)	V. Sec (usft)	DLeg (°/100usft)
0.0	0.00	0.00	0.0	0.0	0.0	0.0	0.00
100.0	0.51	274.44	100.0	0.0	-0.4	-0.3	0.51
200.0	0.30	267.62	200.0	0.1	-1.1	-0.9	0.22
300.0	0.08	162.54	300.0	0.0	-1.4	-1.0	0.33
400.0	0.12	158.20	400.0	-0.2	-1.3	-0.8	0.04
500.0	0.19	258.03	500.0	-0.3	-1.5	-0.8	0.24
600.0	0.06	330.75	600.0	-0.3	-1.6	-1.0	0.18
700.0	0.13	211.27	700.0	-0.4	-1.7	-1.0	0.17
800.0	0.18	279.69	800.0	-0.4	-1.9	-1.1	0.18
900.0	0.13	35.71	900.0	-0.3	-2.0	-1.3	0.26

RECEIVED
Office of Oil and Gas
MAY 26 2015
WV Department of
Environmental Protection



EOW Completion Report



Company:	Antero Resources	Local Co-ordinate Reference:	Well Gideon Unit 1H
Project:	Harrison County West Virginia	TVD Reference:	Gideon Unit 1H GL 1453' + 23' KB @ 1476.0usft
Site:	Gideon/Varner/Plaugher/Lowndes Pad	MD Reference:	Gideon Unit 1H GL 1453' + 23' KB @ 1476.0usft
Well:	Gideon Unit 1H	North Reference:	Grid
Wellbore:	Original Wellpath	Survey Calculation Method:	Minimum Curvature
Design:	As Drilled	Database:	Oklahoma District

Survey								
MD (usft)	Inc (°)	Azi (azimuth) (°)	TVD (usft)	N/S (usft)	E/W (usft)	V. Sec (usft)	DLeg (°/100usft)	
1,000.0	0.03	83.76	1,000.0	-0.2	-1.9	-1.3	0.11	
1,100.0	0.20	29.21	1,100.0	-0.1	-1.8	-1.3	0.18	
1,200.0	0.24	77.43	1,200.0	0.1	-1.5	-1.2	0.18	
1,300.0	0.03	337.15	1,300.0	0.2	-1.3	-1.1	0.25	
1,400.0	0.14	53.75	1,400.0	0.3	-1.3	-1.1	0.14	
1,500.0	0.28	162.08	1,500.0	0.1	-1.1	-0.9	0.35	
1,600.0	0.14	75.09	1,600.0	-0.1	-0.9	-0.6	0.31	
1,700.0	0.20	182.47	1,700.0	-0.2	-0.8	-0.4	0.28	
1,800.0	0.07	158.12	1,800.0	-0.4	-0.8	-0.3	0.14	
1,900.0	0.23	104.33	1,900.0	-0.5	-0.5	0.0	0.20	
2,000.0	0.16	146.23	2,000.0	-0.7	-0.3	0.3	0.15	
2,100.0	0.06	94.37	2,100.0	-0.8	-0.1	0.5	0.13	
2,200.0	0.31	109.44	2,200.0	-0.9	0.2	0.8	0.25	
2,300.0	0.04	99.04	2,300.0	-1.0	0.5	1.0	0.27	
2,400.0	0.25	107.63	2,400.0	-1.1	0.7	1.3	0.21	
2,500.0	0.28	136.31	2,500.0	-1.3	1.1	1.7	0.13	
2,600.0	0.12	120.42	2,600.0	-1.6	1.3	2.0	0.17	
2,700.0	0.26	119.57	2,700.0	-1.7	1.6	2.4	0.14	
2,800.0	0.37	134.35	2,800.0	-2.1	2.1	2.9	0.14	
2,900.0	0.30	150.37	2,900.0	-2.5	2.4	3.5	0.12	
3,000.0	0.15	149.76	3,000.0	-2.9	2.6	3.9	0.15	
3,100.0	0.25	108.66	3,100.0	-3.0	2.9	4.2	0.17	
3,200.0	0.20	142.31	3,200.0	-3.2	3.2	4.5	0.14	
3,300.0	0.26	100.58	3,300.0	-3.4	3.5	4.9	0.17	
3,400.0	0.45	123.68	3,400.0	-3.7	3.8	5.3	0.23	
3,500.0	0.42	146.78	3,500.0	-4.2	4.6	6.2	0.18	
3,600.0	0.33	117.89	3,600.0	-4.6	5.1	6.9	0.21	
3,700.0	0.42	128.60	3,700.0	-5.0	5.6	7.5	0.11	
3,800.0	0.24	125.77	3,800.0	-5.4	6.1	8.1	0.18	
3,900.0	0.21	136.97	3,900.0	-5.6	6.3	8.5	0.05	
4,000.0	0.30	150.88	4,000.0	-6.0	6.6	8.9	0.11	
4,100.0	0.11	178.21	4,100.0	-6.3	6.7	9.2	0.21	
4,200.0	0.19	152.76	4,200.0	-6.5	6.8	9.4	0.10	
4,300.0	0.07	152.91	4,300.0	-6.7	6.9	9.7	0.12	
4,400.0	0.25	133.69	4,400.0	-7.0	7.1	9.9	0.19	
4,500.0	0.26	150.13	4,500.0	-7.3	7.4	10.4	0.07	
4,600.0	0.20	157.23	4,600.0	-7.7	7.5	10.7	0.07	
4,700.0	0.33	148.84	4,700.0	-8.1	7.8	11.2	0.14	
4,800.0	0.23	156.48	4,800.0	-8.5	8.0	11.6	0.11	
4,900.0	0.57	172.77	4,900.0	-9.2	8.1	12.2	0.36	
4,945.1	0.67	165.67	4,945.0	-9.7	8.2	12.6	0.28	
5,000.0	0.59	159.01	5,000.0	-10.2	8.4	13.1	0.20	
5,100.0	2.39	195.81	5,099.9	-12.7	8.0	14.6	1.95	
5,200.0	5.24	200.15	5,199.7	-19.0	5.9	17.4	2.86	
5,300.0	7.79	213.31	5,299.0	-29.0	0.6	20.4	2.94	

RECEIVED
Office of Oil and Gas
MAY 26 2015
WV Department of
Environmental Protection



EOW Completion Report



Company:	Antero Resources	Local Co-ordinate Reference:	Well Gideon Unit 1H
Project:	Harrison County West Virginia	TVD Reference:	Gideon Unit 1H GL 1453' + 23' KB @ 1476.0usft
Site:	Gideon/Varner/Plaugher/Lowndes Pad	MD Reference:	Gideon Unit 1H GL 1453' + 23' KB @ 1476.0usft
Well:	Gideon Unit 1H	North Reference:	Grid
Wellbore:	Original Wellpath	Survey Calculation Method:	Minimum Curvature
Design:	As Drilled	Database:	Oklahoma District

Survey

MD (usft)	Inc (°)	Azi (azimuth) (°)	TVD (usft)	N/S (usft)	E/W (usft)	V. Sec (usft)	DLeg (°/100usft)
5,400.0	9.92	219.87	5,397.8	-41.2	-8.7	22.1	2.35
5,500.0	12.37	222.57	5,495.9	-55.7	-21.4	22.8	2.50
5,600.0	14.70	224.92	5,593.2	-72.6	-37.6	22.7	2.39
5,700.0	16.91	222.98	5,689.4	-92.2	-56.5	22.5	2.27
5,800.0	19.69	221.85	5,784.3	-115.4	-77.7	23.1	2.80
5,900.0	21.25	223.68	5,878.0	-141.1	-101.4	23.5	1.69
6,000.0	25.07	223.66	5,969.9	-169.5	-128.6	23.4	3.82
6,100.0	22.04	230.11	6,061.6	-196.9	-157.6	21.1	3.97
6,200.0	22.27	227.11	6,154.2	-221.8	-185.9	17.8	1.15
6,300.0	26.48	228.12	6,245.3	-249.6	-216.4	14.8	4.23
6,400.0	28.64	229.16	6,333.9	-280.2	-251.1	10.6	2.21
6,500.0	27.34	226.75	6,422.2	-311.6	-286.0	6.9	1.72
6,600.0	27.80	229.47	6,510.9	-342.5	-320.4	3.2	1.34
6,700.0	26.88	229.94	6,599.7	-372.2	-355.5	-1.8	0.94
6,800.0	29.03	227.13	6,688.0	-403.3	-390.5	-5.9	2.52
6,900.0	27.45	223.20	6,776.1	-436.6	-424.1	-7.3	2.44
7,000.0	26.73	228.42	6,865.2	-468.3	-456.7	-9.2	2.48
7,100.0	29.74	229.63	6,953.3	-499.3	-492.4	-13.8	3.06
7,145.2	29.02	228.82	6,992.7	-513.8	-509.2	-16.0	1.82
7,212.0	26.51	227.36	7,051.8	-534.5	-532.4	-18.5	3.89
7,244.0	27.02	219.44	7,080.3	-545.0	-542.3	-18.5	11.25
7,275.0	29.18	212.34	7,107.7	-556.8	-550.8	-16.5	12.83
7,307.0	31.37	203.41	7,135.3	-571.1	-558.3	-12.1	5.63
7,338.0	32.64	200.95	7,161.6	-586.3	-564.5	-6.2	5.87
7,370.0	34.45	197.87	7,188.3	-603.0	-570.3	-2.0	7.76
7,402.0	36.66	192.24	7,214.3	-620.9	-575.2	9.9	12.34
7,433.0	38.40	185.31	7,238.9	-639.6	-578.0	20.7	11.72
7,463.0	39.92	178.92	7,262.2	-658.5	-578.7	33.2	14.37
7,495.0	41.07	172.37	7,286.6	-679.2	-577.1	48.6	13.76
7,526.0	42.29	167.10	7,309.7	-699.4	-573.4	65.2	11.97
7,548.0	43.43	164.47	7,325.8	-713.9	-569.7	77.8	9.65
Burkett							
7,557.0	43.92	163.43	7,332.4	-719.9	-568.0	83.2	9.65
7,584.0	45.60	160.94	7,351.5	-738.0	-562.2	99.9	9.01
Tully							
7,589.0	45.92	160.49	7,355.0	-741.4	-561.0	103.1	9.01
7,621.0	46.49	154.07	7,377.2	-762.7	-552.1	124.2	14.59
7,653.0	48.63	149.44	7,398.8	-783.4	-540.9	146.6	12.60
7,684.0	51.49	148.42	7,418.7	-803.8	-528.6	169.5	9.56
7,716.0	54.28	147.68	7,438.0	-825.5	-515.1	194.2	8.91
7,721.0	54.88	147.49	7,440.9	-828.9	-513.0	198.2	12.48
Hamilton							
7,746.0	57.91	146.57	7,454.7	-846.4	-501.6	218.4	12.48
7,777.0	61.94	146.56	7,470.2	-868.7	-486.8	244.5	13.00
7,809.0	66.05	145.60	7,484.3	-892.6	-470.8	272.6	13.12

RECEIVED
Office of Oil and Gas
MAY 26 2013

WV Department of
Environmental Protection



EOW Completion Report



Company:	Antero Resources	Local Co-ordinate Reference:	Well Gideon Unit 1H
Project:	Harrison County West Virginia	TVD Reference:	Gideon Unit 1H GL 1453' + 23' KB @ 1476.0usft
Site:	Gideon/Varner/Plaugher/Lowndes Pad	MD Reference:	Gideon Unit 1H GL 1453' + 23' KB @ 1476.0usft
Well:	Gideon Unit 1H	North Reference:	Grid
Wellbore:	Original Wellpath	Survey Calculation Method:	Minimum Curvature
Design:	As Drilled	Database:	Oklahoma District

Survey

MD (usft)	Inc (°)	Azi (azimuth) (°)	TVD (usft)	N/S (usft)	E/W (usft)	V. Sec (usft)	DLeg (°/100usft)
7,840.0	69.69	144.20	7,495.9	-916.1	-454.3	300.7	12.46
7,872.0	73.06	142.30	7,506.2	-940.4	-436.1	330.6	11.94
7,904.0	77.13	141.30	7,514.4	-964.7	-417.0	361.2	13.07
7,906.0	77.31	141.12	7,514.8	-966.2	-415.8	363.1	12.84
Marcellus							
7,936.0	80.07	138.37	7,520.7	-988.6	-396.8	392.4	12.84
7,968.0	82.39	135.30	7,525.6	-1,011.7	-375.2	423.9	11.94
8,000.0	84.78	134.06	7,529.2	-1,034.0	-352.5	455.7	8.40
8,047.0	88.89	132.54	7,531.8	-1,066.2	-318.4	502.6	9.32
8,142.0	89.06	131.33	7,533.5	-1,129.7	-247.7	597.6	1.29
8,238.0	88.69	130.53	7,535.4	-1,192.6	-175.2	693.5	0.92
8,332.0	89.02	132.52	7,537.2	-1,254.9	-104.9	787.4	2.15
8,428.0	90.47	132.59	7,537.7	-1,319.8	-34.2	883.4	1.51
8,523.0	90.44	131.87	7,536.9	-1,383.7	36.2	978.3	0.76
8,618.0	90.27	134.81	7,536.3	-1,448.8	105.3	1,073.3	3.10
8,714.0	90.87	133.43	7,535.4	-1,515.7	174.2	1,169.3	1.57
8,808.0	91.01	134.08	7,533.8	-1,580.7	242.1	1,263.3	0.71
8,903.0	90.77	132.87	7,532.3	-1,646.0	311.0	1,358.3	1.30
8,998.0	90.77	135.32	7,531.1	-1,712.1	379.2	1,453.3	2.58
9,094.0	91.41	135.43	7,529.2	-1,780.4	446.6	1,549.3	0.68
9,188.0	91.54	135.20	7,526.8	-1,847.2	512.7	1,643.1	0.38
9,283.0	90.50	134.00	7,525.1	-1,913.9	580.3	1,738.1	1.67
9,378.0	90.67	132.51	7,524.2	-1,979.0	649.5	1,833.1	1.58
9,472.0	90.81	133.45	7,522.9	-2,043.1	718.3	1,927.1	1.01
9,568.0	90.47	132.32	7,521.9	-2,108.4	788.6	2,023.1	1.23
9,662.0	91.51	134.96	7,520.2	-2,173.3	856.6	2,119.1	3.02
9,757.0	90.87	133.84	7,518.3	-2,239.7	924.5	2,212.0	1.66
9,852.0	90.34	133.56	7,517.3	-2,305.4	993.2	2,307.0	0.63
9,946.0	91.41	134.31	7,515.8	-2,370.6	1,060.9	2,401.0	1.39
10,041.0	90.94	133.73	7,513.9	-2,436.6	1,129.2	2,495.9	0.79
10,136.0	91.34	134.05	7,512.0	-2,502.4	1,197.6	2,590.9	0.54
10,232.0	90.54	134.58	7,510.4	-2,569.5	1,266.3	2,686.9	1.00
10,325.0	90.94	134.31	7,509.2	-2,634.6	1,332.7	2,779.9	0.52
10,420.0	91.58	135.17	7,507.1	-2,701.5	1,400.1	2,874.8	1.13
10,514.0	90.13	133.30	7,505.7	-2,767.0	1,467.5	2,968.8	2.52
10,609.0	89.29	133.72	7,506.2	-2,832.4	1,536.4	3,063.8	0.99
10,704.0	89.56	132.56	7,507.2	-2,897.4	1,605.7	3,158.8	1.25
10,799.0	89.90	133.13	7,507.6	-2,962.0	1,675.3	3,253.8	0.70
10,893.0	89.33	133.02	7,508.2	-3,026.2	1,744.0	3,347.8	0.62
10,986.0	90.60	133.32	7,508.3	-3,089.8	1,811.8	3,440.8	1.40
11,081.0	90.22	134.46	7,507.6	-3,155.7	1,880.3	3,535.8	1.26
11,176.0	90.13	134.72	7,507.3	-3,222.3	1,947.9	3,630.8	0.29
11,267.0	91.58	134.57	7,506.0	-3,286.3	2,012.7	3,721.7	1.60
11,357.0	91.61	132.62	7,503.5	-3,348.3	2,077.8	3,811.7	2.17

RECEIVED
Office of Oil and Gas
MAY 26 2015
WV Department of
Environmental Protection



MAY 26 2015



WV Department of
Environmental Protection

Company:	Antero Resources	Local Co-ordinate Reference:	Well Gideon Unit 1H
Project:	Harrison County West Virginia	TVD Reference:	Gideon Unit 1H GL 1453' + 23' KB @ 1476.0usft
Site:	Gideon/Varner/Plaugher/Lowndes Pad	MD Reference:	Gideon Unit 1H GL 1453' + 23' KB @ 1476.0usft
Well:	Gideon Unit 1H	North Reference:	Grid
Wellbore:	Original Wellpath	Survey Calculation Method:	Minimum Curvature
Design:	As Drilled	Database:	Oklahoma District

Survey

MD (usft)	Inc (°)	Azi (azimuth) (°)	TVD (usft)	N/S (usft)	E/W (usft)	V. Sec (usft)	DLeg (°/100usft)
11,446.0	91.54	131.23	7,501.0	-3,407.8	2,144.0	3,900.6	1.56
11,538.0	91.01	131.64	7,499.0	-3,468.6	2,213.0	3,992.5	0.73
11,627.0	90.81	132.34	7,497.6	-3,528.2	2,279.1	4,081.5	0.82
11,717.0	90.60	131.87	7,496.5	-3,588.5	2,345.9	4,171.5	0.57
11,807.0	90.44	132.62	7,495.6	-3,649.0	2,412.5	4,261.4	0.85
11,898.0	91.75	134.31	7,493.9	-3,711.6	2,478.5	4,352.4	2.35
11,989.0	90.66	135.32	7,492.0	-3,775.7	2,543.1	4,443.4	1.63
12,080.0	90.92	135.16	7,490.7	-3,840.3	2,607.1	4,534.3	0.34
12,170.0	90.74	135.72	7,489.4	-3,904.4	2,670.3	4,624.3	0.65
12,260.0	90.27	133.21	7,488.6	-3,967.5	2,734.5	4,714.2	2.84
12,355.0	90.30	131.66	7,488.2	-4,031.6	2,804.6	4,809.2	1.63
12,450.0	90.13	133.39	7,487.8	-4,095.8	2,874.6	4,904.2	1.83
12,544.0	90.50	133.40	7,487.3	-4,160.4	2,942.9	4,998.2	0.39
12,639.0	90.71	132.95	7,486.3	-4,225.4	3,012.2	5,093.2	0.52
12,734.0	90.67	132.63	7,485.1	-4,289.9	3,081.9	5,188.2	0.34
12,829.0	90.20	132.44	7,484.4	-4,354.1	3,151.9	5,283.2	0.53
12,925.0	91.21	133.54	7,483.2	-4,419.6	3,222.1	5,379.1	1.56
13,020.0	91.51	132.42	7,481.0	-4,484.3	3,291.6	5,474.1	1.22
13,115.0	90.00	132.53	7,479.7	-4,548.5	3,361.7	5,569.1	1.59
13,210.0	90.03	132.32	7,479.7	-4,612.5	3,431.8	5,664.1	0.22
13,305.0	90.40	132.13	7,479.3	-4,676.4	3,502.2	5,759.0	0.44
13,400.0	90.30	131.48	7,478.8	-4,739.7	3,573.0	5,854.0	0.69
13,495.0	91.11	133.32	7,477.6	-4,803.8	3,643.1	5,949.0	2.12
13,590.0	91.04	133.22	7,475.8	-4,868.9	3,712.3	6,044.0	0.13
13,686.0	89.83	134.43	7,475.1	-4,935.3	3,781.5	6,139.9	1.78
13,781.0	87.92	134.59	7,477.0	-5,001.9	3,849.3	6,234.9	2.02
13,876.0	87.78	135.17	7,480.5	-5,068.9	3,916.5	6,329.8	0.63
13,971.0	88.99	135.87	7,483.2	-5,136.7	3,983.1	6,424.7	1.47
14,066.0	90.60	139.24	7,483.5	-5,206.8	4,047.2	6,519.5	3.93
14,160.0	88.69	136.90	7,484.1	-5,276.7	4,110.0	6,613.1	3.21
14,255.0	91.58	137.23	7,483.9	-5,346.2	4,174.7	6,707.9	3.06
14,351.0	88.19	135.78	7,484.1	-5,415.8	4,240.7	6,803.8	3.84
14,445.0	90.00	135.94	7,485.6	-5,483.3	4,306.2	6,897.7	1.93
14,509.0	88.19	134.52	7,486.6	-5,528.7	4,351.2	6,961.7	3.59
14,540.0	87.18	133.81	7,487.8	-5,550.3	4,373.5	6,992.6	3.98
14,572.0	87.28	133.14	7,489.4	-5,572.3	4,396.7	7,024.6	2.11
14,603.0	87.21	133.28	7,490.9	-5,593.5	4,419.2	7,055.5	0.50
14,634.0	86.61	132.39	7,492.5	-5,614.5	4,441.9	7,086.5	3.46
14,666.0	86.17	132.65	7,494.6	-5,636.1	4,465.5	7,118.4	1.60
14,697.0	86.04	132.86	7,496.7	-5,657.1	4,488.2	7,149.4	0.80
14,729.0	85.53	134.28	7,499.0	-5,679.1	4,511.3	7,181.3	4.70
14,761.0	86.41	130.52	7,501.3	-5,700.6	4,534.9	7,213.2	12.04
14,793.0	86.34	129.70	7,503.3	-5,721.2	4,559.3	7,245.1	2.57
14,824.0	86.11	129.54	7,505.3	-5,740.9	4,583.1	7,275.9	0.90
14,856.0	87.82	129.70	7,507.0	-5,761.3	4,607.7	7,307.8	5.37



EOW Completion Report



Company:	Antero Resources	Local Co-ordinate Reference:	Well Gideon Unit 1H
Project:	Harrison County West Virginia	TVD Reference:	Gideon Unit 1H GL 1453' + 23' KB @ 1476.0usft
Site:	Gideon/Varner/Plaughter/Lowndes Pad	MD Reference:	Gideon Unit 1H GL 1453' + 23' KB @ 1476.0usft
Well:	Gideon Unit 1H	North Reference:	Grid
Wellbore:	Original Wellpath	Survey Calculation Method:	Minimum Curvature
Design:	As Drilled	Database:	Oklahoma District

Survey

MD (usft)	Inc (°)	Azi (azimuth) (°)	TVD (usft)	N/S (usft)	E/W (usft)	V. Sec (usft)	DLeg (°/100usft)
14,888.0	89.40	130.22	7,507.8	-5,781.9	4,632.3	7,339.7	5.20
14,919.0	89.60	130.65	7,508.1	-5,802.0	4,655.8	7,370.7	1.53
15,014.0	89.09	130.79	7,509.2	-5,863.9	4,727.8	7,465.6	0.56
15,109.0	89.97	130.69	7,509.9	-5,925.9	4,799.8	7,560.5	0.93
15,204.0	89.03	130.99	7,510.8	-5,988.1	4,871.7	7,655.4	1.04
15,299.0	89.40	129.69	7,512.1	-6,049.5	4,944.1	7,750.2	1.42
15,395.0	90.84	129.29	7,511.9	-6,110.6	5,018.2	7,846.0	1.56
15,491.0	92.69	130.20	7,508.9	-6,171.9	5,091.9	7,941.7	2.15
15,585.0	91.88	132.95	7,505.2	-6,234.3	5,162.2	8,035.6	3.05
15,680.0	89.63	134.78	7,503.9	-6,300.1	5,230.7	8,130.6	3.05
15,775.0	90.07	134.77	7,504.2	-6,367.0	5,298.1	8,225.5	0.46
15,871.0	91.75	133.71	7,502.6	-6,434.0	5,366.9	8,321.5	2.07
15,966.0	92.55	133.72	7,499.1	-6,499.6	5,435.5	8,416.4	0.84
16,061.0	92.25	133.02	7,495.1	-6,564.7	5,504.5	8,511.4	0.80
16,128.0	92.31	132.42	7,492.4	-6,610.2	5,553.7	8,578.3	0.90
16,180.0	92.76	132.58	7,490.1	-6,645.3	5,592.0	8,630.2	0.92

Design Annotations

Measured Depth (usft)	Vertical Depth (usft)	Local Coordinates		Comment
		+N/-S (usft)	+E/-W (usft)	
7,548.0	7,325.8	-713.9	-569.7	Burkett
7,584.0	7,351.5	-738.0	-562.2	Tully
7,721.0	7,440.9	-828.9	-513.0	Hamilton
7,906.0	7,514.8	-966.2	-415.8	Marcellus

Checked By: _____ Approved By: _____ Date: _____

RECEIVED
Office of Oil and Gas
MAY 26 2015
WV Department of
Environmental Protection