



west virginia department of environmental protection

Office of Oil and Gas
601 57th Street SE
Charleston, WV 25304
(304) 926-0450
(304) 926-0452 fax

Earl Ray Tomblin, Governor
Randy C. Huffman, Cabinet Secretary
www.dep.wv.gov

PERMIT MODIFICATION APPROVAL

February 25, 2014

ANTERO RESOURCES APPALACHIAN CORPORATION
1625 17TH STREET, SUITE 300
DENVER, CO 80202

Re: Permit Modification Approval for API Number 3305719 , Well #: LOWNDES UNIT 2H
Changed Orientation of Lateral

Oil and Gas Operator:

The Office of Oil and Gas has reviewed the attached permit modification for the above referenced permit. The attached modification has been approved and well work may begin. Please be reminded that the oil and gas inspector is to be notified twenty-four (24) hours before permitted well work is commenced.

Please call James Martin at 304-926-0499, extension 1654 if you have any questions.

Sincerely,

for
Gene Smith

Regulatory/Compliance Manager
Office of Oil and Gas



December 11, 2013

West Virginia Department of Environmental Protection
Office of Oil and Gas
Attn: Ms. Laura Cooper
601 57th Street
Charleston, WV 25304

Antero Resources
1625 17th Street
Denver, Colorado 80202
Office 303.357.7310
Fax 303.357.7315

Ms. Laura Cooper:

Antero Resources Corporation (Antero) would like to submit the following permit modifications for two approved wells on the existing Varner West Pad. We are requesting to change the orientation of the horizontal laterals which will change the bottom hole locations of the Lowndes Unit 1H (API# 47-033-05720) and Lowndes Unit 2H (API#47-033-05719).

Attached you will find the following documents:

- REVISED Form WW-6B, which shows the revised MD and Production Casing/Cement program
- REVISED Form WW-6A1, which shows the leases we will be drilling into
- REVISED Mylar Plat, which shows the new bottom hole location

If you have any questions please feel free to contact me at (303) 357-7323.

Thank you in advance for your consideration.

Sincerely,

Ashlie Mihalcin
Permit Representative
Antero Resources Corporation

Enclosures

RECEIVED
Office of Oil and Gas

12/11/13

Permit Representative
Ashlie Mihalcin

02/28/2014

WW-6B
(9/13)

STATE OF WEST VIRGINIA
DEPARTMENT OF ENVIRONMENTAL PROTECTION, OFFICE OF OIL AND GAS
WELL WORK PERMIT APPLICATION

1) Well Operator: Antero Resources Corporation 494488557 033- Harrison Tenmile Salem
Operator ID County District Quadrangle

2) Operator's Well Number: Lowndes Unit 2H Well Pad Name: Varner West Pad (existing)

3) Farm Name/Surface Owner: Varner, James A. Public Road Access: CR 50/6

4) Elevation, current ground: 1453' Elevation, proposed post-construction: 1453'

5) Well Type (a) Gas Oil Underground Storage
Other

(b) If Gas Shallow Deep
Horizontal

6) Existing Pad: Yes or No Yes

7) Proposed Target Formation(s), Depth(s), Anticipated Thickness and Associated Pressure(s):
Marcellus Shale: 7700' TVD, Anticipated Thickness- 50 Feet, Associated Pressure- 3200#

8) Proposed Total Vertical Depth: 7,700' TVD

9) Formation at Total Vertical Depth: Marcellus Shale

10) Proposed Total Measured Depth: 17,300' MD

11) Proposed Horizontal Leg Length: 8913'

12) Approximate Fresh Water Strata Depths: 135'

13) Method to Determine Fresh Water Depths: Gideon Unit 1H (API#47-033-05722) on same pad

14) Approximate Saltwater Depths: 2300'

15) Approximate Coal Seam Depths: 1064', 2020'

16) Approximate Depth to Possible Void (coal mine, karst, other): None anticipated

17) Does Proposed well location contain coal seams directly overlying or adjacent to an active mine? Yes No

(a) If Yes, provide Mine Info: Name: _____
Depth: _____
Seam: _____
Owner: _____

RECEIVED
Office of Oil and Gas
DEC 19 2013
West Virginia Department of
Environmental Protection

WW-6B
(9/13)

18) CASING AND TUBING PROGRAM

<u>TYPE</u>	<u>Size</u>	<u>New or Used</u>	<u>Grade</u>	<u>Weight per ft. (lb/ft)</u>	<u>FOOTAGE: For Drilling</u>	<u>INTERVALS: Left in Well</u>	<u>CEMENT: Fill-up (Cu. Ft.)</u>
Conductor	20"	New	H-40	94#	40'	40'	CTS, 38 Cu. Ft.
Fresh Water	13-3/8"	New	J-55/H-40	54.5#/ 48#	345'	345'	CTS, 479 Cu. Ft.
Coal	9-5/8"	New	J-55	36#	2475'	2475'	CTS, 1008 Cu. Ft.
Intermediate							
Production	5-1/2"	New	P-110	20#	17300'	17300'	4366 Cu. Ft.
Tubing	2-3/8"	New	N-80	4.7#		7200'	
Liners							

<u>TYPE</u>	<u>Size</u>	<u>Wellbore Diameter</u>	<u>Wall Thickness</u>	<u>Burst Pressure</u>	<u>Cement Type</u>	<u>Cement Yield (cu. ft./k)</u>
Conductor	20"	24"	0.438"	1530	Class A	1.18
Fresh Water	13-3/8"	17-1/2"	0.38"/0.33"	2730/1730	Class A	1.18
Coal	9-5/8"	12-1/4"	0.352"	3520	Class A	1.18
Intermediate						
Production	5-1/2"	8-3/4" & 8-1/2"	0.361"	12630	Lead-H/POZ & Tail - H	H/POZ-1.44 & H-1.8
Tubing	2-3/8"	4.778"	0.19"	11200		
Liners						

PACKERS

Kind:	N/A			
Sizes:	N/A			
Depths Set:	N/A			

RECEIVED
Office of Oil and Gas
DEC 18 2013
Department of
Environmental Protection

WW-6B
(9/13)

19) Describe proposed well work, including the drilling and plugging back of any pilot hole:

Drill, perforate, fracture a new horizontal shallow well and complete Marcellus Shale.

20) Describe fracturing/stimulating methods in detail, including anticipated max pressure and max rate:

Antero plans to pump Slickwater into the Marcellus Shale formation in order to ready the well for production. The fluid will be comprised of approximately 99 percent water and sand, with less than 1 percent special-purpose additives as shown in the attached "List of Anticipated Additives Used for Fracturing or Stimulating Well."

21) Total Area to be disturbed, including roads, stockpile area, pits, etc., (acres): 9.73 acres

22) Area to be disturbed for well pad only, less access road (acres): 5.38 acres

23) Describe centralizer placement for each casing string:

Conductor: no centralizers
 Surface Casing: one centralizer 10' above the float shoe, one on the insert float collar and one every 4th joint spaced up the hole to surface.
 Intermediate Casing: one centralizer above float joint, one centralizer 5' above float collar and one every 4th collar to surface.
 Production Casing: one centralizer at shoe joint and one every 3 joints to top of cement in intermediate casing.

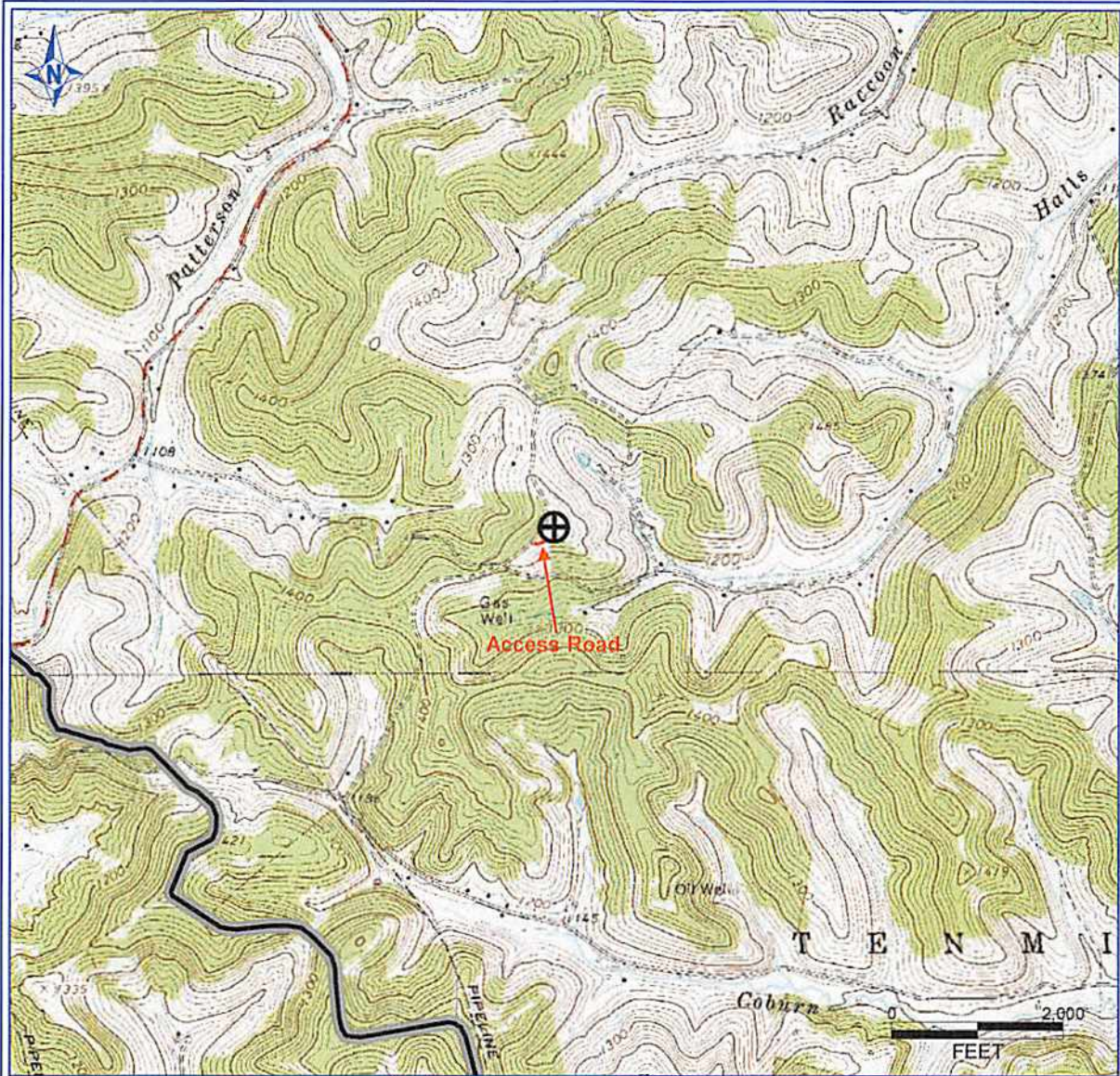
24) Describe all cement additives associated with each cement type:

Conductor: no additives, Class A cement.
 Surface: Surface: Class A cement with 2-3% calcium chloride
 Intermediate: Class A cement with 1/4 lb of flake, 5 gallons of clay treat
 Production: Lead cement- 50/50 Class H/Poz + 1.5% salt + 1% C-45 + 0.5% C-16a + 0.2% C-12 + 0.45% C-20 + 0.05% C-51
 Production: Tail cement- Class H + 45 PPS Calcium Carbonate + 1.0% FL-160 + 0.2% ACGB-47 + 0.05% ACSA-51 + 0.2% ACR-20

25) Proposed borehole conditioning procedures:

Conductor: blowhole clean with air, run casing, 10 bbls fresh water.
 Surface: blowhole clean with air, trip to conductor shoe, trip to bottom, blowhole clean with air, trip out, run casing, circulate pipe capacity + 40 bbls fresh water followed by 25 bbls bentonite mud, 10 bbls fresh water spacer.
 Intermediate: blowhole clean with air, trip to surface casing shoe, trip to bottom, blowhole clean with air, trip out, run casing, circulate 40 bbls brine water followed by 10 bbls fresh water and 25 bbls bentonite mud, pump 10 bbls fresh water.
 Production: circulate with 14 lb/gal NaCl mud, trip to middle of lateral, circulate, pump high viscosity sweep, trip to base of curve, pump high viscosity sweep, trip to top of curve, trip to bottom, circulate, pump high viscosity sweep, trip out, run casing, circulate 10 bbls fresh water, pump 48 bbls barite pill, pump 10 bbls fresh water followed by 48 bbls mud flush and 10 bbls water.

*Note: Attach additional sheets as needed.

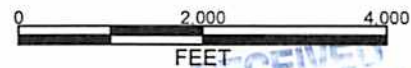


PETRA 12/19/2012 2:51:43 PM

Antero Resources Corporation

APPALACHIAN BASIN

Lowndes Unit 2H
Harrison County



REMARKS
 QUADRANGLE: SALEM
 WATERSHED: HALLS RUN
 DISTRICT: TENMILE

Date: 12/19/2012

33-05719 H6A LOWNDES UNIT 2H
ANTERO RESOURCES CORP

PAD NAME: VARNER WEST

