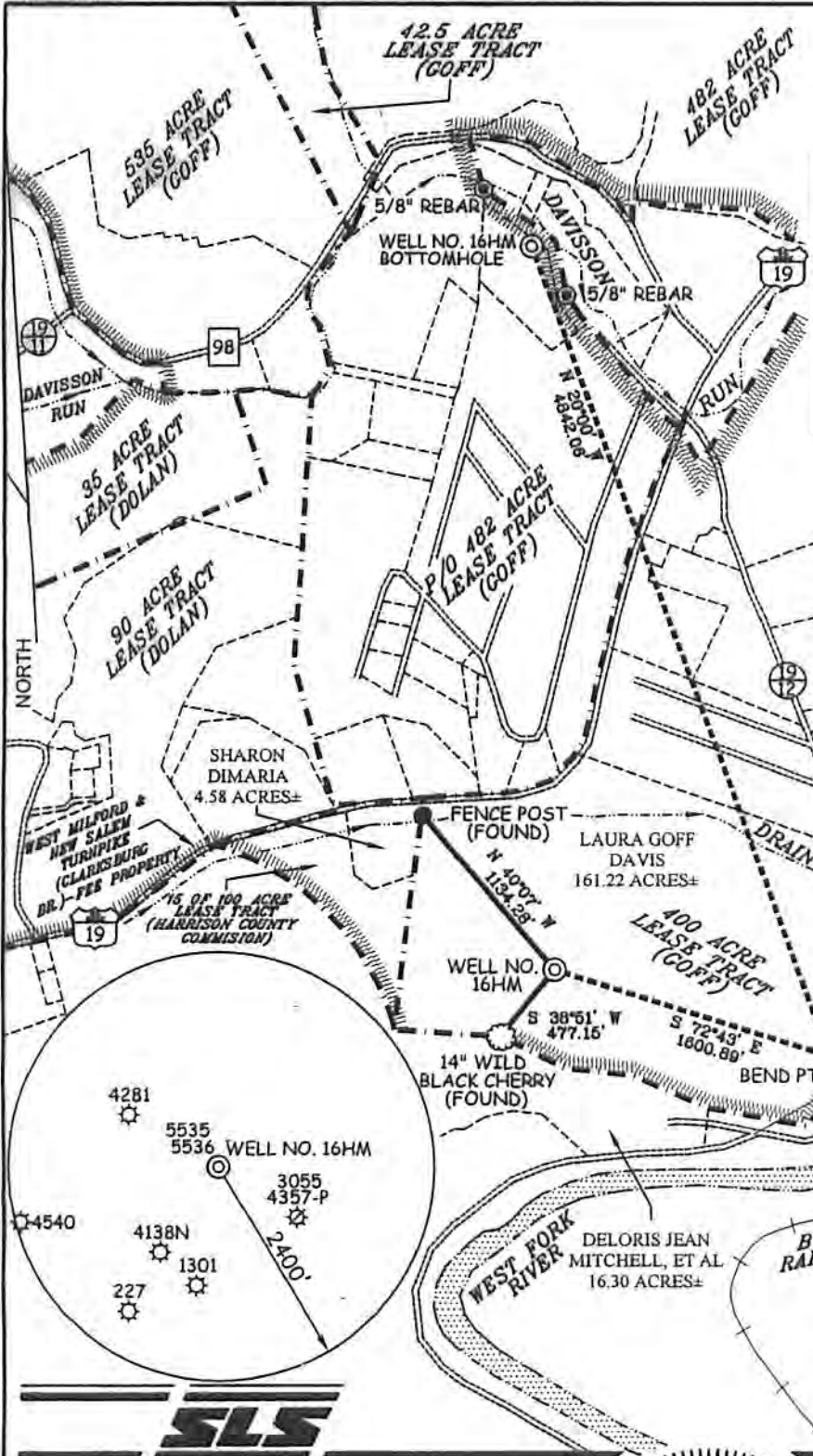


LATITUDE 39°17'30"
GOFF LEASE
WELL NO. 16HM

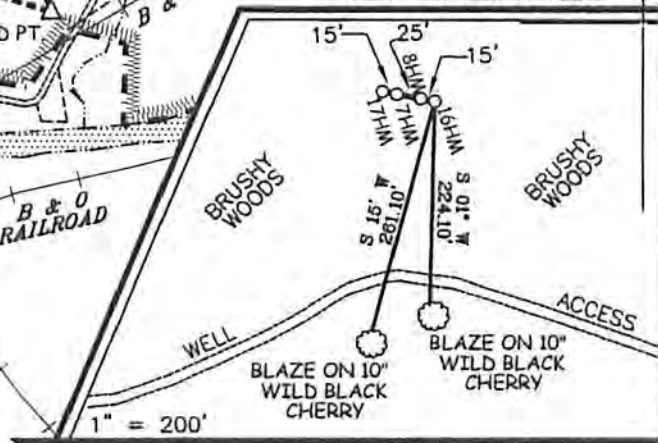
WELL NO. 16HM TOP HOLE STATE PLANE COORDINATES (NORTH ZONE NAD 27) N. 277,605 E. 1,752,019 TOP HOLE (NAD 27) LAT=(N) 39°15'31.9" LONG=(W) 80°22'32.8" TOP HOLE (NAD 83) LAT=(N) 39°15'32.3" LONG=(W) 80°22'32.1" TOP HOLE UTM (NAD 83) (N) 4,345,700 (E) 553,872	WELL NO. 16HM BEND POINT STATE PLANE COORDINATES (NORTH ZONE NAD 27) N. 277,130 E. 1,753,547 BEND POINT (NAD 27) LAT=(N) 39°15'27.4" LONG=(W) 80°22'13.9" BEND POINT (NAD 83) LAT=(N) 39°15'27.7" LONG=(W) 80°22'12.6" BEND POINT UTM (NAD 83) (N) 4,345,563 (E) 554,340
WELL NO. 16HM BOTTOM HOLE STATE PLANE COORDINATES (NORTH ZONE NAD 27) N. 281,680 E. 1,751,891 BOTTOM HOLE (NAD 27) LAT=(N) 39°16'12.2" LONG=(W) 80°22'34.9" BOTTOM HOLE (NAD 83) LAT=(N) 39°16'12.5" LONG=(W) 80°22'34.2" BOTTOM HOLE UTM (NAD 83) (N) 4,346,941 (E) 553,813	



NOTES ON SURVEY

1. TIES TO WELLS AND CORNERS ARE BASED ON GRID NORTH FOR THE WV STATE PLANE COORDINATE SYSTEM NORTH ZONE NAD '27.
2. TIES TO REFERENCES ARE BASED ON MAGNETIC NORTH 03-08-10.
3. LEASE BOUNDARY SHOWN HEREON TAKEN FROM DEED BOOK 70 PAGE 152 AND ADJOINING DEEDS.
4. SURFACE OWNER AND ADJOINER INFORMATION TAKEN FROM THE ASSESSOR AND COUNTY CLERK RECORDS OF HARRISON COUNTY IN JULY, 2012.
5. WELL LAT./LONG. (NAD'27) ESTABLISHED BY DGPS(SUBMETER MAPPING GRADE).

REFERENCES



I THE UNDERSIGNED, HEREBY CERTIFY THAT THIS PLAT IS CORRECT TO THE BEST OF MY KNOWLEDGE AND BELIEF AND SHOWS ALL THE INFORMATION REQUIRED BY LAW AND THE REGULATIONS ISSUED AND PRESCRIBED BY THE DIVISION OF ENVIRONMENTAL PROTECTION.

P.S. 677

Gregory A. Smith



(+) DENOTES LOCATION OF WELL ON UNITED STATES TOPOGRAPHIC MAPS.

DATE OCTOBER 8, 20 12

OPERATORS WELL NO. GOFF #16HM

API WELL NO. 47 - 33 - 5717 HGA
STATE COUNTY PERMIT

MINIMUM DEGREE OF ACCURACY 1 / 200 FILE NO. 7129P16HM(297-57)
PROVEN SOURCE OF ELEVATION DGPS (SUBMETER MAPPING GRADE) SCALE 1" = 1,000'

STATE OF WEST VIRGINIA
DIVISION OF ENVIRONMENTAL PROTECTION
OFFICE OF OIL AND GAS



WELL TYPE: OIL GAS INJECTION WASTE DISPOSAL IF "GAS" PRODUCTION STORAGE DEEP SHALLOW

LOCATION: ELEVATION 1,158' WATERSHED WEST FORK RIVER
DISTRICT CLARK COUNTY HARRISON QUADRANGLE WOLF SUMMIT 7.5'

SURFACE OWNER LAURA GOFF DAVIS ACREAGE 161.22±
ROYALTY OWNER GOFF HEIRS, ET AL & STATE OF WV ACREAGE 400 & 482±

PROPOSED WORK: LEASE NO. _____
DRILL CONVERT DRILL DEEPER REDRILL FRACTURE OR STIMULATE PLUG OFF OLD FORMATION
PERFORATE NEW FORMATION PLUG AND ABANDON CLEAN OUT AND REPLUG OTHER

PHYSICAL CHANGE IN WELL (SPECIFY) _____ TARGET FORMATION MARCELLUS
ESTIMATED DEPTH 6.920'

WELL OPERATOR PDC MOUNTAINEER, LLC
ADDRESS 120 GENESIS BOULEVARD BRIDGEPORT, WV 26330

DESIGNATED AGENT JAMIE HAGA
ADDRESS 120 GENESIS BOULEVARD BRIDGEPORT, WV 26330