

9,793' to Bottom Hole

LATITUDE 39 - 15 - 00

LONGITUDE 80 - 32 - 30

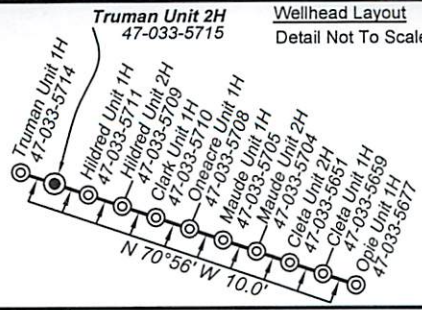
10,014' to Top Hole

### Antero Resources Well No. Truman Unit 2H As-Drilled Plat

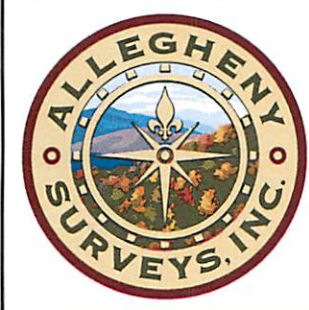
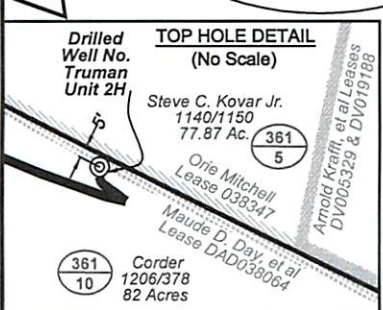
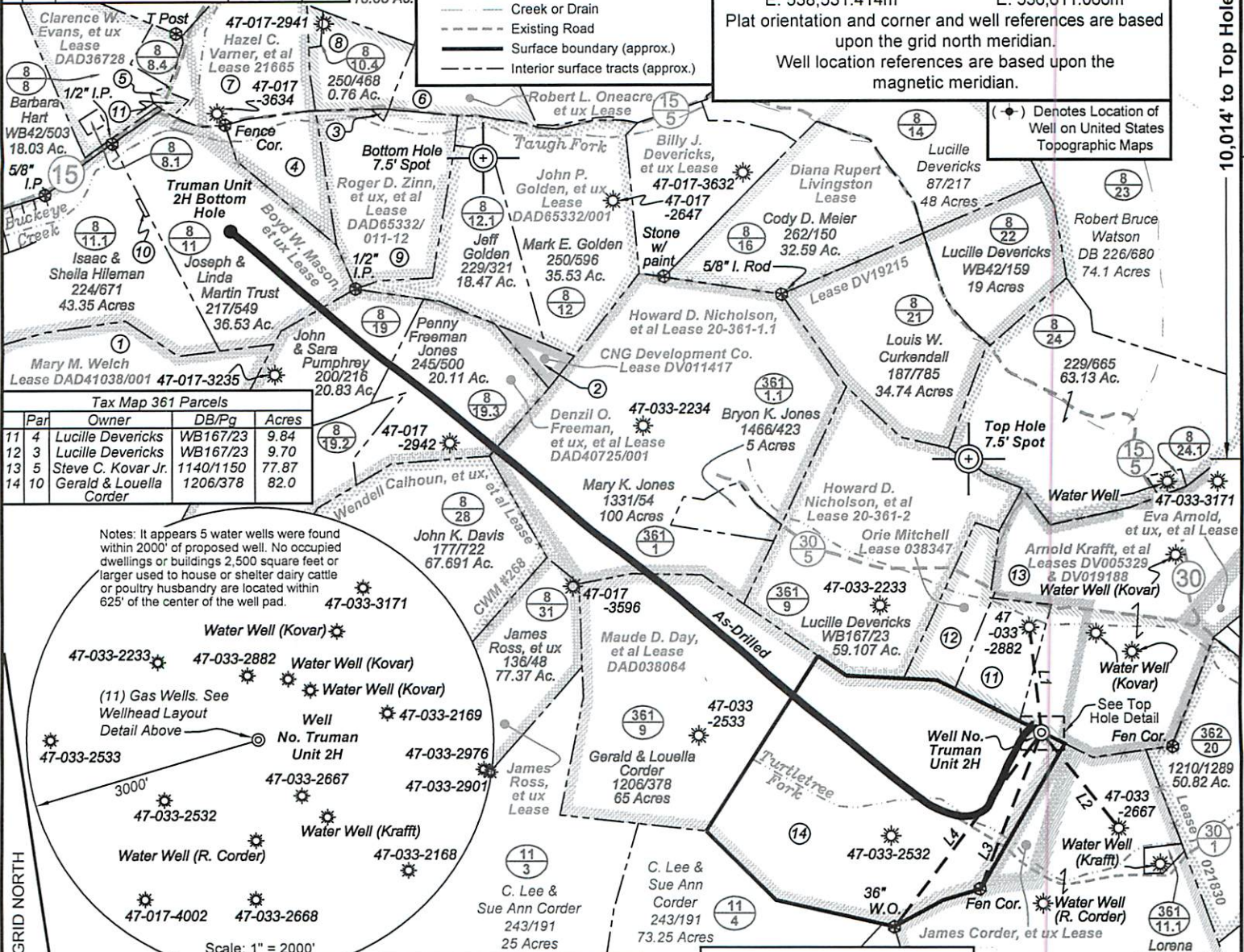
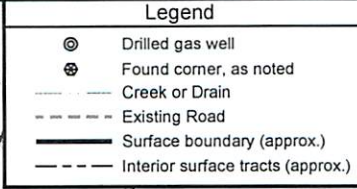
Antero Resources Corporation

Tax Map 8 Parcels

Par	Owner	DB/Pg	Acres	
1	18.6	Vanessa Richter	249/635	35.06
2	20	Penny Freeman Jones	245/500	2.21
3	10.5	Butterfly Evolution Trust	250/468	0.41
4	10.2	Butterfly Evolution Trust	250/468	11.5
5	8.2	Zak S. Henry	287/209	0.34
6	10.1	Barbara Ann Templeton	206/575	12.67
7	9	Jonell L. Carver	265/418	21.7
8	10.6	Butterfly Evolution Trust	250/468	10.66
9	10.3	Butterfly Evolution Trust	250/468	27.8
10	11.1	Joseph & Linda Martin Trust	217/549	0.11
11	8.3	Stephanie D. Moore	277/244	0.49



Notes:  
West Virginia Coordinate System of 1927, North Zone based upon Differential GPS Measurements.  
Well No. Truman Unit 2H Top Hole coordinates are  
N: 264,861.08 Latitude: 39°13'20.61"  
E: 1,701,451.29 Longitude: 80°33'13.69"  
Bottom Hole coordinates are  
N: 268,742.88 Latitude: 39°13'58.25"  
E: 1,695,212.66 Longitude: 80°34'33.55"  
UTM Zone 17, NAD 1983  
Top Hole Coordinates: Bottom Hole Coordinates:  
N: 4,341,560.958m N: 4,342,711.847m  
E: 538,531.414m E: 536,611.066m  
Plat orientation and corner and well references are based upon the grid north meridian.  
Well location references are based upon the magnetic meridian.



Top Hole coordinates verified by survey grade GPS. As-drilled data and information was provided by Antero Resources Corporation. Allegheny Surveys, Inc. (ASI) is not certifying the data and information provided. ASI is not responsible for any errors or inaccuracies with the data and information that has been provided.

Line	Bearing	Distance
L1	S 06°41' E	814.4
L2	N 38°59' W	952.3'
L3	N 21°29' E	1297.1'
L4	N 36°03' E	1878.1

FILE NO: 233-30-G-12  
DRAWING NO: 233-12 Truman Drilled 2H  
SCALE: 1" = 1200'  
MINIMUM DEGREE OF ACCURACY: Submeter  
PROVEN SOURCE OF ELEVATION: WVDOT, Bridgeport, WV

STATE OF WEST VIRGINIA  
DEPARTMENT OF ENVIRONMENTAL PROTECTION  
OFFICE OF OIL AND GAS

DATE: November 4 20 14  
OPERATOR'S WELL NO. Truman Unit 2H  
API WELL NO: 47 - 033 - 05715  
STATE COUNTY PERMIT

WELL TYPE:  OIL  GAS  LIQUID INJECTION  WASTE DISPOSAL  
(IF GAS) PRODUCTION:  STORAGE  DEEP  SHALLOW

LOCATION: ELEVATION: 1405' WATERSHED: Turtletree Fork of Tenmile Creek QUADRANGLE: Big Isaac  
DISTRICT: Union COUNTY: Hancock

SURFACE OWNER: Gerald & Louella Corder Howard D. Nicholson, et al 20-361-1.1  
Boyd W. Mason, et ux DAD40725/001 ACREAGE: 82  
ROYALTY OWNER: Maude D. Day, et al; Denzil O. Freeman, et ux, et al LEASE NO: DAD038064 ACREAGE: 147; 165; 76; 89

PROPOSED WORK:  DRILL  CONVERT  DRILL DEEPER  FRACTURE OR STIMULATE  PLUG OFF OLD FORMATION  
 PERFORATE NEW FORMATION  OTHER PHYSICAL CHANGE IN WELL (SPECIFY) As-Drilled TVD 7,494'  
 PLUG AND ABANDON  CLEAN OUT AND REPLUG TARGET FORMATION: Marcellus Shale DEPTH: MD 14,768

WELL OPERATOR: Antero Resources Corporation DESIGNATED AGENT: Dianna Stamper - CT Corporation System  
ADDRESS: 1615 Wynkoop Street ADDRESS: 5400 D Big Tyler Road  
Denver, CO 80202 Charleston, WV 25313