

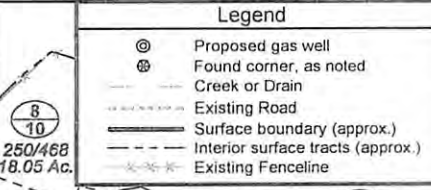
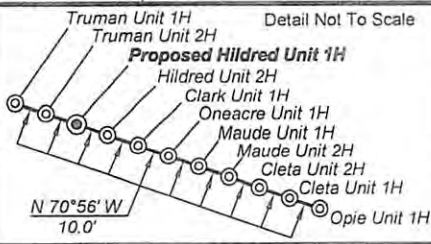
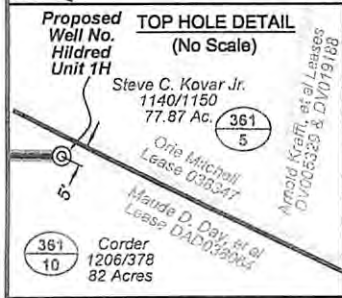
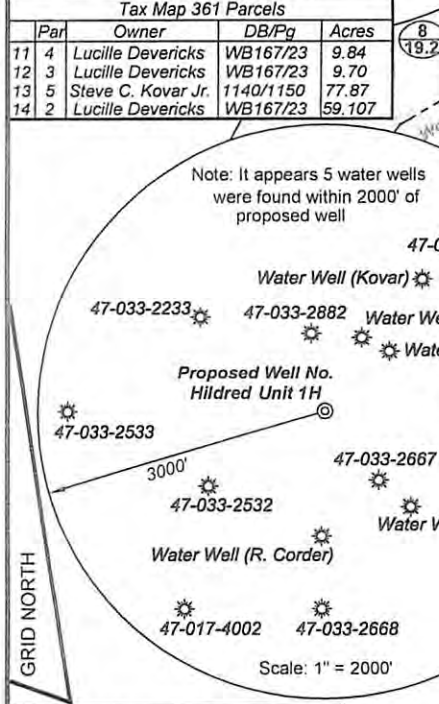
Antero Resources
Well No. Hildred Unit 1H
Antero Resources
Appalachian Corporation

Tax Map 8 Parcels

Par	Owner	DB/Pg	Acres
1	13 Lucille Devericks	WB42/159	23.0
2	20 Penny Freeman Jones	245/500	2.21
3	10.5 Butterfly Evolution Trust	250/468	0.41
4	10.2 Butterfly Evolution Trust	250/468	11.5
5	8.2 Zak S. Henry	287/209	0.34
6	10.1 Barbara Ann Templeton	206/575	12.67
7	9 Jonell L. Carver	265/418	21.7
8	10.6 Butterfly Evolution Trust	250/468	10.66
9	10.3 Butterfly Evolution Trust	250/468	27.8
10	11.11 Joseph & Linda Martin Trust	217/549	0.11
11	8.3 Stephanie D. Moore	277/244	0.49

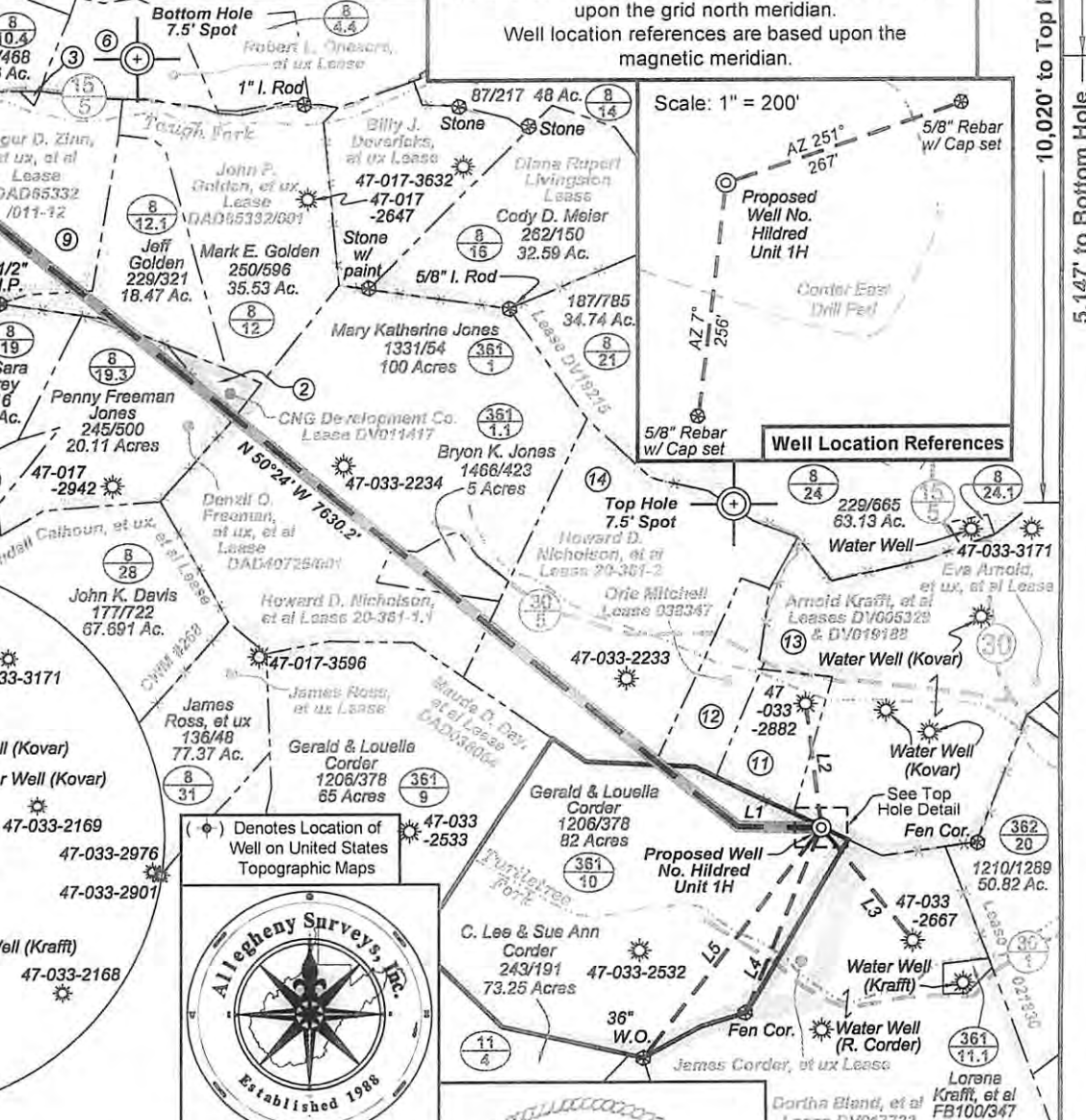
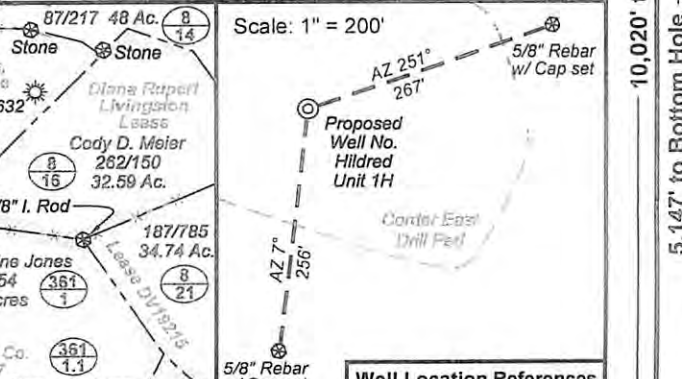
Tax Map 361 Parcels

Par	Owner	DB/Pg	Acres
11	4 Lucille Devericks	WB167/23	9.84
12	3 Lucille Devericks	WB167/23	9.70
13	5 Steve C. Kovar Jr.	1140/1150	77.87
14	2 Lucille Devericks	WB167/23	59.107



3,546' to Top Hole | LATITUDE 39 - 15 - 00

Notes:
 West Virginia Coordinate System of 1927, North Zone based upon Differential GPS Measurements.
 Well No. Hildred Unit 1H Top Hole coordinates are
 N: 264,855.85 Latitude: 39°13'20.56"
 E: 1,701,459.95 Longitude: 80°33'13.58"
 Bottom Hole coordinates are
 N: 269,728.36 Latitude: 39°14'07.97"
 E: 1,695,045.77 Longitude: 80°34'35.82"
UTM Zone 17, NAD 1983
 Top Hole Coordinates: Bottom Hole Coordinates:
 N: 4,341,559.409m N: 4,343,011.227m
 E: 538,534.079m E: 536,555.216m
 Plat orientation and corner and well references are based upon the grid north meridian.
 Well location references are based upon the magnetic meridian.



I, the undersigned, hereby certify that this plat is correct to the best of my knowledge and belief and shows all the information required by law and the regulations issued and prescribed by the Department of Environmental Protection.

Kenneth J. Plum
Kenneth J. Plum, P.S. 2216



FILE NO: 232-30-G-12
 DRAWING NO: 232-12 Hildred 1H Well
 SCALE: 1" = 1200'
 MINIMUM DEGREE OF ACCURACY: Submeter
 PROVEN SOURCE OF ELEVATION: WVDOT, Bridgeport, WV

STATE OF WEST VIRGINIA
 DEPARTMENT OF ENVIRONMENTAL PROTECTION
OFFICE OF OIL AND GAS

DATE: October 29 20 12
 OPERATOR'S WELL NO. Hildred Unit 1H
 API WELL NO: 47 - 033 - 05711 HGA
 STATE COUNTY PERMIT

WELL TYPE: OIL GAS LIQUID INJECTION WASTE DISPOSAL
 (IF GAS) PRODUCTION: STORAGE DEEP SHALLOW

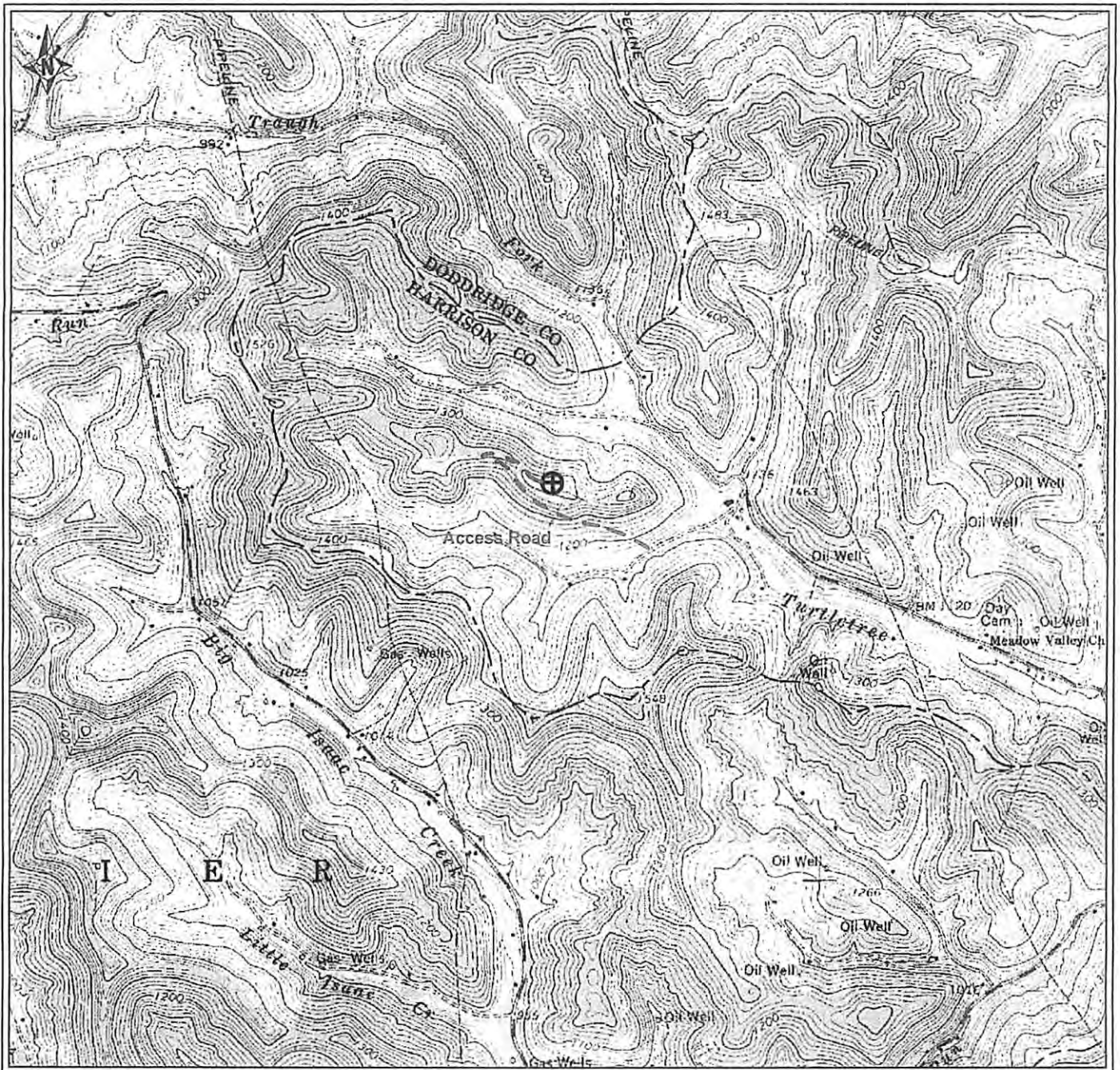
LOCATION: ELEVATION: 1405' WATERSHED: Turtletree Fork of Tenmile Creek QUADRANGLE: Big Isaac

DISTRICT: Union COUNTY: Harrison
 SURFACE OWNER: Gerald & Louella Corder ACREAGE: 82 31.5, 76
 ROYALTY OWNER: Maude D. Day, et al; Orié Mitchell; Howard D. Nicholson, et al (2) LEASE NO: DAD038064; 038347 ACREAGE: 147; 48.69; 59; 165

PROPOSED WORK: DRILL CONVERT DRILL DEEPER FRACTURE OR STIMULATE PLUG OFF OLD FORMATION
 PERFORATE NEW FORMATION OTHER PHYSICAL CHANGE IN WELL (SPECIFY) TVD 7,700'
 PLUG AND ABANDON CLEAN OUT AND REPLUG TARGET FORMATION: Marcellus Shale ESTIMATED DEPTH: MD 16,000'

WELL OPERATOR: Antero Resources Appalachian Corporation DESIGNATED AGENT: Dianna Stamper - CT Corporation System
 ADDRESS: 1625 17th Street ADDRESS: 5400 D Big Tyler Road
 Denver, CO 80202 Charleston, WV 25313

02/01/2013



PETRA 6/6/2012 12:04:43 PM

33-05711

Antero Resources Corporation

Appalachian Basin

Hildred Unit 1H

Harrison County



REMARKS
 QUADRANGLE: BIG ISSAC
 WATERSHED: TURTLE TREE FORK OF
 TENMILE CREEK
 DISTRICT: UNION

June 6, 2012

RECEIVED
 OFFICE OF OIL & GAS
 2012 NOV - 1 P 1:51