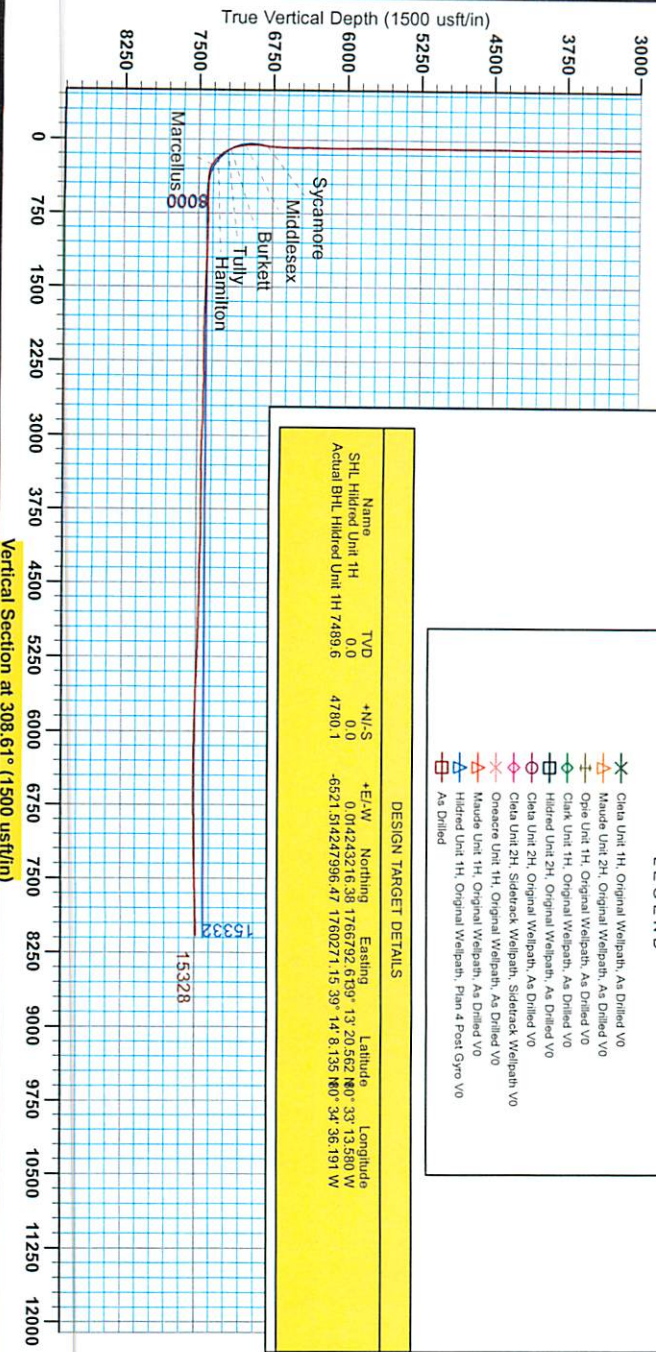




Antero Resources
 Hildred Unit 1H
 Harrison County West Virginia
 Northing: 14243216.38
 Easting: 1766792.61
 As Drilled

Patterson 347: Hildred 1H 1405 GL + 25 KB @ 1430 Ouart
 Gr.: 1405.0



WELL DETAILS: Hildred Unit 1H

Ground Level:	1405.0	Latitude	33° 13.580' W
+N/-S	0.0	Longitude	101° 42.432' E
+E/-W	14243216.38	Uplift	13.20562' (80° 33' 13.580" W)
Easting	1766792.6139°	Plan 4 Post Gps VO	14° 8.135' (80° 34' 36.191" W)

PROJECT DETAILS: Harrison County West Virginia

Geodesic System: Universal Transverse Mercator (US Survey Feet)
 Datum: NAD 1983 (NAD83 CONUS)
 Ellipsoid: Clarke 1866
 Zone: Zone 17N (84 W to 78 W)
 System Datum: Mean Sea Level

REFERENCE INFORMATION

Coordinate NEI Reference: Well Information 1H, 0101 North
 Vertical (VD) Reference: Patterson 347 Hildred 1H 1405 GL + 25 KB @ 1430 Ouart
 Horizontal (HD) Reference: Patterson 347 Hildred 1H 1405 GL + 25 KB @ 1430 Ouart
 Grid System: NAD 1983 (NAD83 CONUS)



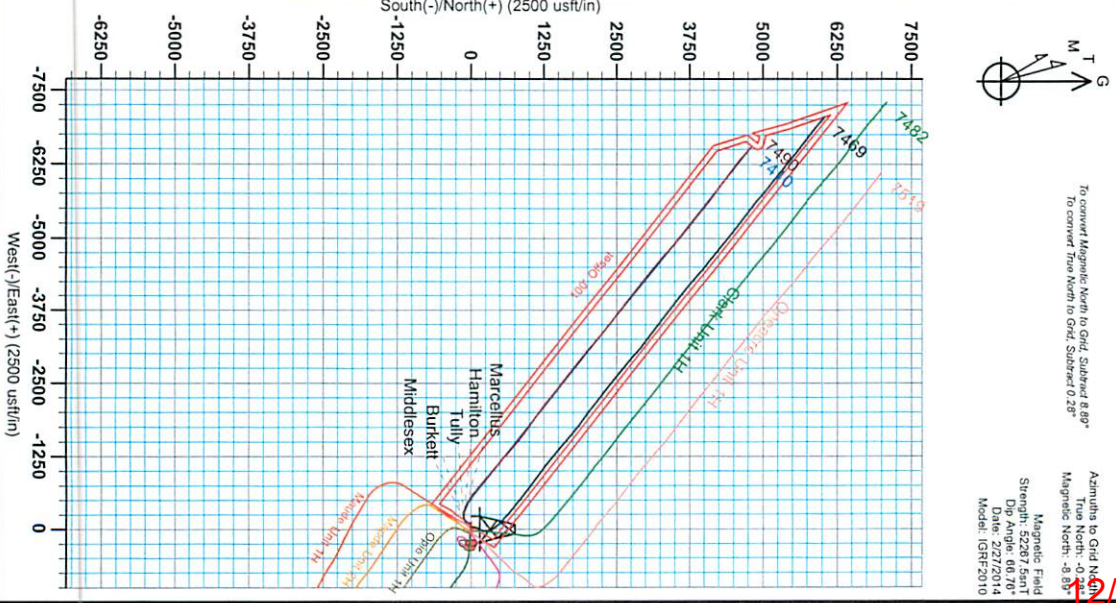
Scientific Drilling

Gene Lightfoot
 15.54, July 10 2014
 421 South Engle Lane
 Oklahoma City, OK 73128

- LEGEND**
- Green line with 'x': Cleta Unit 1H, Original Wellpath, As Drilled VO
 - Red line with 'x': Maude Unit 2H, Original Wellpath, As Drilled VO
 - Blue line with 'x': Ope Unit 1H, Original Wellpath, As Drilled VO
 - Black line with 'x': Clink Unit 1H, Original Wellpath, As Drilled VO
 - Orange line with 'x': Hildred Unit 2H, Original Wellpath, As Drilled VO
 - Purple line with 'x': Cleta Unit 2H, Original Wellpath, As Drilled VO
 - Yellow line with 'x': Cleta Unit 2H, Sidetrack Wellpath, As Drilled VO
 - Pink line with 'x': Omeacore Unit 1H, Original Wellpath, As Drilled VO
 - Light blue line with 'x': Maude Unit 1H, Original Wellpath, As Drilled VO
 - Light green line with 'x': Hildred Unit 1H, Original Wellpath, Plan 4 Post Gps VO
 - Light purple line with 'x': As Drilled

DESIGN TARGET DETAILS

Name	TVD	+N/-S	+E/-W	Northing	Easting	Latitude	Longitude
SHL Hildred Unit 1H	0.0	0.0	0.0	0 014243216.38	1766792.6139°	13° 20.562' (80° 33' 13.580" W)	101° 42.432' E
Actual BHL Hildred Unit 1H 7489.6	4780.1			-6521.614247996.47	1760271.15.39°	14° 8.135' (80° 34' 36.191" W)	



12/05/2014
 33.05711

33-05711



Antero Resources

**Harrison County West Virginia
Cleta / Opie / Maude Pad
Hildred Unit 1H
Original Wellpath**

Design: As Drilled

EOW Completion Report

10 July, 2014

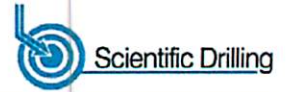


12/05/2014

33-05711



EOW Completion Report



Company:	Antero Resources	Local Co-ordinate Reference:	Well Hildred Unit 1H
Project:	Harrison County West Virginia	TVD Reference:	Patterson 347: Hildred 1H 1405 GL + 25 KB @ 14
Site:	Cleta / Opie / Maude Pad	MD Reference:	Patterson 347: Hildred 1H 1405 GL + 25 KB @ 14
Well:	Hildred Unit 1H	North Reference:	Grid
Wellbore:	Original Wellpath	Survey Calculation Method:	Minimum Curvature
Design:	As Drilled	Database:	Oklahoma District

Project	Harrison County West Virginia, Harrison County, USA		
Map System:	Universal Transverse Mercator (US Survey Fee	System Datum:	Mean Sea Level
Geo Datum:	NAD 1927 (NADCON CONUS)		
Map Zone:	Zone 17N (84 W to 78 W)		

Site	Cleta / Opie / Maude Pad, SHL Cleta Unit 1H				
Site Position:		Northing:	14,243,194.63 usft	Latitude:	39° 13' 20.344 N
From:	Map	Easting:	1,766,859.11 usft	Longitude:	80° 33' 12.736 W
Position Uncertainty:	0.0 usft	Slot Radius:	13-3/16"	Grid Convergence:	0.28 °

Well	Hildred Unit 1H, Marcellus					
Well Position	+N/-S	0.0 usft	Northing:	14,243,216.38 usft	Latitude:	39° 13' 20.562 N
	+E/-W	0.0 usft	Easting:	1,766,792.61 usft	Longitude:	80° 33' 13.580 W
Position Uncertainty		2.0 usft	Wellhead Elevation:	1,430.0 usft	Ground Level:	1,405.0 usft

Wellbore	Original Wellpath
-----------------	-------------------

Magnetics	Model Name	Sample Date	Declination (°)	Dip Angle (°)	Field Strength (nT)
	IGRF2010	2/27/2014	-8.61	66.76	52,268

Design	As Drilled
---------------	------------

Audit Notes:					
Version:	1.0	Phase:	ACTUAL	Tie On Depth:	0.0
Vertical Section:	Depth From (TVD)	+N/-S	+E/-W	Direction	
	(usft)	(usft)	(usft)	(°)	
	0.0	0.0	0.0	308.61	

Survey Program	From (usft)	To (usft)	Date	Survey (Wellbore)	Tool Name	Description
	112.0	6,510.0	7/10/2014	Survey #7 Final Gyro (Original Wellpath)	SDI Standard Keeper	Scientific Drilling Intl. Standard Wireline Keeper
	6,603.0	15,328.0		Survey #8 MWD (Original Wellpath)	MWD SDI	MWD - Standard ver 1.0.1

MD (usft)	Inc (°)	Azi (azimuth) (°)	TVD (usft)	N/S (usft)	E/W (usft)	V. Sec (usft)	DLeg (°/100usft)
0.0	0.00	0.00	0.0	0.0	0.0	0.0	0.00
112.0	0.14	300.90	112.0	0.1	-0.1	0.1	0.12
212.0	0.13	103.69	212.0	0.1	-0.1	0.2	0.27
312.0	0.04	169.54	312.0	0.0	0.0	0.0	0.12
412.0	0.11	131.32	412.0	-0.1	0.1	-0.1	0.08
512.0	0.19	106.83	512.0	-0.2	0.3	-0.3	0.10
612.0	0.18	88.32	612.0	-0.2	0.6	-0.6	0.06
712.0	0.21	99.78	712.0	-0.2	1.0	-0.9	0.05
812.0	0.22	104.82	812.0	-0.3	1.3	-1.2	0.02
912.0	0.33	117.12	912.0	-0.5	1.8	-1.7	0.12
1,012.0	0.35	131.69	1,012.0	-0.8	2.3	-2.3	0.09

33.05711



EOW Completion Report



Company:	Antero Resources	Local Co-ordinate Reference:	Well Hildred Unit 1H
Project:	Harrison County West Virginia	TVD Reference:	Patterson 347: Hildred 1H 1405 GL + 25 KB @ 14
Site:	Cleta / Opie / Maude Pad	MD Reference:	Patterson 347: Hildred 1H 1405 GL + 25 KB @ 14
Well:	Hildred Unit 1H	North Reference:	Grid
Wellbore:	Original Wellpath	Survey Calculation Method:	Minimum Curvature
Design:	As Drilled	Database:	Oklahoma District

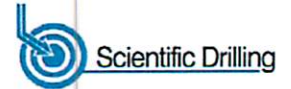
Survey

MD (usft)	Inc (°)	Azi (azimuth) (°)	TVD (usft)	N/S (usft)	E/W (usft)	V. Sec (usft)	DLeg (°/100usft)
1,112.0	0.49	116.34	1,112.0	-1.2	2.9	-3.0	0.18
1,212.0	0.47	116.50	1,212.0	-1.6	3.6	-3.8	0.02
1,312.0	0.73	117.94	1,312.0	-2.1	4.6	-4.9	0.26
1,412.0	0.41	130.93	1,412.0	-2.6	5.4	-5.8	0.34
1,512.0	2.09	255.98	1,512.0	-3.3	3.9	-5.1	2.35
1,612.0	5.23	259.59	1,611.7	-4.6	-2.4	-1.0	3.15
1,712.0	6.95	263.28	1,711.2	-6.1	-12.9	6.3	1.76
1,812.0	6.94	271.16	1,810.4	-6.7	-24.9	15.3	0.95
1,912.0	6.24	275.77	1,909.8	-6.0	-36.4	24.7	0.88
2,012.0	5.63	277.94	2,009.2	-4.8	-46.6	33.5	0.65
2,112.0	5.04	277.55	2,108.8	-3.5	-55.8	41.4	0.59
2,212.0	4.56	277.16	2,208.5	-2.4	-64.1	48.6	0.48
2,312.0	4.00	279.25	2,308.2	-1.4	-71.5	55.0	0.58
2,412.0	3.26	281.34	2,408.0	-0.3	-77.8	60.6	0.75
2,512.0	2.78	282.77	2,507.8	0.8	-82.9	65.3	0.49
2,612.0	2.28	283.59	2,607.7	1.8	-87.2	69.3	0.50
2,712.0	1.51	288.47	2,707.7	2.7	-90.4	72.3	0.79
2,812.0	1.13	286.39	2,807.7	3.4	-92.6	74.5	0.38
2,912.0	0.79	285.51	2,907.6	3.9	-94.2	76.0	0.34
3,012.0	0.52	296.18	3,007.6	4.3	-95.3	77.1	0.30
3,112.0	0.56	307.17	3,107.6	4.7	-96.1	78.0	0.11
3,212.0	0.58	335.28	3,207.6	5.5	-96.7	79.0	0.28
3,312.0	0.31	326.28	3,307.6	6.2	-97.0	79.7	0.28
3,412.0	0.13	302.91	3,407.6	6.5	-97.3	80.0	0.20
3,512.0	0.55	256.55	3,507.6	6.4	-97.8	80.5	0.47
3,612.0	0.91	262.55	3,607.6	6.2	-99.1	81.3	0.37
3,712.0	0.68	261.50	3,707.6	6.0	-100.5	82.3	0.23
3,812.0	0.72	263.50	3,807.6	5.9	-101.7	83.1	0.05
3,912.0	0.34	266.06	3,907.6	5.8	-102.6	83.8	0.38
4,012.0	0.38	238.85	4,007.6	5.6	-103.2	84.1	0.17
4,112.0	0.38	246.83	4,107.6	5.3	-103.8	84.4	0.05
4,212.0	0.14	231.10	4,207.6	5.1	-104.2	84.6	0.25
4,312.0	0.23	178.53	4,307.6	4.8	-104.2	84.5	0.18
4,412.0	0.26	150.01	4,407.6	4.4	-104.1	84.1	0.12
4,512.0	0.36	139.47	4,507.6	4.0	-103.8	83.6	0.11
4,612.0	0.33	127.43	4,607.6	3.5	-103.4	83.0	0.08
4,712.0	0.35	131.23	4,707.6	3.2	-102.9	82.4	0.03
4,812.0	0.34	101.13	4,807.6	2.9	-102.4	81.8	0.18
4,912.0	0.34	101.32	4,907.6	2.8	-101.8	81.3	0.00
5,012.0	0.39	107.74	5,007.6	2.6	-101.2	80.7	0.06
5,112.0	0.39	98.17	5,107.6	2.5	-100.5	80.1	0.07
5,212.0	0.33	71.56	5,207.6	2.5	-99.9	79.7	0.18
5,312.0	0.36	65.16	5,307.6	2.7	-99.4	79.4	0.05
5,412.0	0.44	67.02	5,407.6	3.0	-98.7	79.0	0.08

33-05711



EOW Completion Report



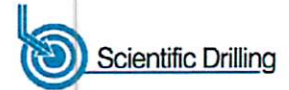
Company:	Antero Resources	Local Co-ordinate Reference:	Well Hildred Unit 1H
Project:	Harrison County West Virginia	TVD Reference:	Patterson 347: Hildred 1H 1405 GL + 25 KB @ 14
Site:	Cleta / Opie / Maude Pad	MD Reference:	Patterson 347: Hildred 1H 1405 GL + 25 KB @ 14
Well:	Hildred Unit 1H	North Reference:	Grid
Wellbore:	Original Wellpath	Survey Calculation Method:	Minimum Curvature
Design:	As Drilled	Database:	Oklahoma District

Survey									
MD (usft)	Inc (°)	Azi (azimuth) (°)	TVD (usft)	N/S (usft)	E/W (usft)	V. Sec (usft)	DLeg (°/100usft)		
5,512.0	0.41	45.43	5,507.6	3.4	-98.1	78.8	0.16		
5,612.0	0.38	43.44	5,607.6	3.9	-97.6	78.7	0.03		
5,712.0	0.32	45.57	5,707.6	4.4	-97.2	78.7	0.06		
5,812.0	0.27	36.01	5,807.6	4.7	-96.9	78.7	0.07		
5,912.0	0.39	11.41	5,907.6	5.3	-96.7	78.8	0.18		
6,012.0	0.47	23.80	6,007.6	6.0	-96.4	79.1	0.12		
6,112.0	0.40	42.40	6,107.6	6.6	-96.0	79.2	0.16		
6,212.0	0.34	29.02	6,207.6	7.1	-95.7	79.2	0.10		
6,312.0	0.41	79.13	6,307.5	7.5	-95.2	79.0	0.32		
6,412.0	0.43	82.04	6,407.5	7.6	-94.4	78.5	0.03		
6,510.0	0.44	82.61	6,505.5	7.7	-93.7	78.0	0.01		
6,603.0	0.36	105.56	6,598.5	7.6	-93.1	77.5	0.19		
6,635.0	1.42	180.59	6,630.5	7.2	-93.0	77.2	4.29		
6,666.0	4.36	187.01	6,661.5	5.7	-93.1	76.3	9.53		
6,698.0	7.65	190.36	6,693.3	2.4	-93.7	74.7	10.34		
6,729.0	11.34	194.23	6,723.9	-2.6	-94.8	72.4	12.07		
6,760.0	14.23	197.62	6,754.1	-9.2	-96.7	69.8	9.63		
6,792.0	16.50	198.59	6,785.0	-17.3	-99.3	66.8	7.14		
6,819.0	18.75	197.84	6,810.7	-25.0	-101.9	64.0	8.36		
Sycamore									
6,823.0	19.08	197.74	6,814.5	-26.3	-102.3	63.5	8.36		
6,855.0	22.88	197.92	6,844.4	-37.2	-105.8	59.5	11.88		
6,886.0	24.07	199.58	6,872.8	-48.9	-109.7	55.3	4.39		
6,918.0	23.17	207.60	6,902.1	-60.6	-114.9	51.9	10.42		
6,949.0	22.94	217.21	6,930.7	-70.8	-121.3	50.6	12.15		
6,981.0	22.83	224.33	6,960.1	-80.2	-129.4	51.1	8.65		
7,012.0	22.51	227.55	6,988.7	-88.5	-138.0	52.6	4.13		
7,043.0	22.34	229.64	7,017.4	-96.4	-146.9	54.7	2.63		
7,060.0	22.28	233.14	7,033.1	-100.4	-151.9	56.1	7.83		
Middlesex									
7,075.0	22.29	236.24	7,047.0	-103.7	-156.6	57.7	7.83		
7,106.0	22.54	243.30	7,075.7	-109.6	-166.8	61.9	8.72		
7,138.0	24.36	250.88	7,105.0	-114.5	-178.5	68.0	11.00		
7,169.0	26.17	256.53	7,133.1	-118.2	-191.2	75.6	9.72		
7,201.0	28.44	262.41	7,161.5	-120.9	-205.6	85.2	11.01		
7,222.0	29.92	266.04	7,179.8	-121.9	-215.8	92.6	10.98		
Burkett									
7,232.0	30.66	267.65	7,188.5	-122.2	-220.8	96.3	10.98		
7,254.0	32.76	270.88	7,207.2	-122.3	-232.4	105.3	12.27		
Tully									
7,263.0	33.64	272.10	7,214.7	-122.2	-237.3	109.2	12.27		
7,295.0	37.64	275.79	7,240.7	-120.9	-255.9	124.5	14.19		
7,326.0	41.44	277.80	7,264.6	-118.5	-275.5	141.3	12.93		
7,358.0	44.84	278.96	7,288.0	-115.3	-297.1	160.2	10.91		

33.05711



EOW Completion Report



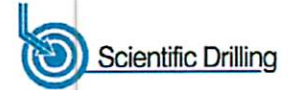
Company:	Antero Resources	Local Co-ordinate Reference:	Well Hildred Unit 1H
Project:	Harrison County West Virginia	TVD Reference:	Patterson 347: Hildred 1H 1405 GL + 25 KB @ 14
Site:	Cleta / Opie / Maude Pad	MD Reference:	Patterson 347: Hildred 1H 1405 GL + 25 KB @ 14
Well:	Hildred Unit 1H	North Reference:	Grid
Wellbore:	Original Wellpath	Survey Calculation Method:	Minimum Curvature
Design:	As Drilled	Database:	Oklahoma District

Survey							
MD (usft)	Inc (°)	Azi (azimuth) (°)	TVD (usft)	N/S (usft)	EW (usft)	V. Sec (usft)	DLeg (°/100usft)
7,386.0	47.36	281.62	7,307.4	-111.7	-317.0	178.0	11.29
Hamilton							
7,389.0	47.63	281.89	7,309.4	-111.3	-319.1	180.0	11.29
7,420.0	51.35	284.14	7,329.6	-105.9	-342.1	201.2	13.21
7,452.0	55.52	287.36	7,348.6	-98.9	-366.8	224.9	15.33
7,483.0	61.29	290.38	7,364.9	-90.4	-391.8	249.7	20.38
7,489.0	62.45	290.83	7,367.7	-88.5	-396.7	254.8	20.39
Marcellus							
7,515.0	67.48	292.67	7,378.7	-79.8	-418.6	277.3	20.39
7,546.0	73.19	293.58	7,389.1	-68.3	-445.4	305.4	18.63
7,577.0	80.64	295.59	7,396.1	-55.8	-472.9	334.7	24.85
7,592.0	83.17	297.26	7,398.2	-49.2	-486.2	349.2	20.15
7,632.0	88.36	302.69	7,401.2	-29.2	-520.7	388.6	18.75
7,664.0	88.63	306.21	7,402.0	-11.1	-547.1	420.5	11.03
7,695.0	89.13	307.27	7,402.6	7.4	-571.9	451.5	3.78
7,789.0	89.03	310.74	7,404.2	66.5	-644.9	545.5	3.69
7,883.0	90.54	310.85	7,404.5	128.0	-716.1	639.4	1.61
7,977.0	90.48	310.86	7,403.7	189.4	-787.2	733.3	0.06
8,072.0	90.34	310.64	7,403.0	251.5	-859.1	828.3	0.27
8,166.0	89.63	311.12	7,403.0	313.0	-930.2	922.2	0.91
8,256.0	88.16	309.85	7,404.8	371.4	-998.7	1,012.1	2.16
8,347.0	88.09	309.53	7,407.7	429.5	-1,068.6	1,103.0	0.36
8,438.0	88.05	309.37	7,410.8	487.3	-1,138.9	1,194.0	0.18
8,531.0	88.83	310.96	7,413.3	547.2	-1,209.9	1,286.9	1.90
8,623.0	88.86	311.99	7,415.2	608.1	-1,278.8	1,378.8	1.12
8,716.0	87.92	311.19	7,417.8	669.9	-1,348.4	1,471.6	1.33
8,808.0	86.58	310.58	7,422.2	730.0	-1,417.8	1,563.4	1.60
8,901.0	86.74	308.84	7,427.6	789.3	-1,489.2	1,656.3	1.88
8,993.0	88.02	307.20	7,431.8	845.9	-1,561.6	1,748.2	2.26
9,055.0	88.02	306.73	7,434.0	883.2	-1,611.2	1,810.1	0.76
9,147.0	88.69	305.81	7,436.6	937.6	-1,685.3	1,902.0	1.24
9,239.0	89.60	306.53	7,438.0	991.9	-1,759.6	1,993.9	1.26
9,363.0	89.36	305.41	7,439.1	1,064.7	-1,859.9	2,117.7	0.92
9,457.0	91.01	307.72	7,438.8	1,120.7	-1,935.4	2,211.7	3.02
9,551.0	91.17	306.62	7,437.0	1,177.5	-2,010.3	2,305.6	1.18
9,645.0	89.66	307.23	7,436.3	1,233.9	-2,085.4	2,399.6	1.73
9,739.0	88.19	306.05	7,438.1	1,290.0	-2,160.8	2,493.5	2.01
9,833.0	88.86	308.40	7,440.5	1,346.9	-2,235.7	2,587.4	2.60
9,928.0	90.30	309.89	7,441.2	1,406.8	-2,309.3	2,682.4	2.18
10,022.0	89.97	310.02	7,441.0	1,467.2	-2,381.4	2,776.4	0.38
10,116.0	87.01	307.17	7,443.5	1,525.8	-2,454.8	2,870.3	4.37
10,210.0	86.67	307.34	7,448.7	1,582.6	-2,529.5	2,964.2	0.40
10,305.0	86.40	309.48	7,454.4	1,641.5	-2,603.8	3,059.0	2.27
10,399.0	91.34	310.12	7,456.3	1,701.7	-2,676.0	3,152.9	5.30
10,493.0	91.24	309.18	7,454.1	1,761.6	-2,748.3	3,246.9	1.01

33-05711



EOW Completion Report



Company:	Antero Resources	Local Co-ordinate Reference:	Well Hildred Unit 1H
Project:	Harrison County West Virginia	TVD Reference:	Patterson 347: Hildred 1H 1405 GL + 25 KB @ 14
Site:	Cleta / Opie / Maude Pad	MD Reference:	Patterson 347: Hildred 1H 1405 GL + 25 KB @ 14
Well:	Hildred Unit 1H	North Reference:	Grid
Wellbore:	Original Wellpath	Survey Calculation Method:	Minimum Curvature
Design:	As Drilled	Database:	Oklahoma District

Survey

MD (usft)	Inc (°)	Azi (azimuth) (°)	TVD (usft)	N/S (usft)	E/W (usft)	V. Sec (usft)	DLeg (°/100usft)
10,587.0	90.54	309.04	7,452.7	1,820.9	-2,821.3	3,340.9	0.76
10,681.0	89.23	308.22	7,452.9	1,879.6	-2,894.7	3,434.9	1.64
10,775.0	88.69	307.40	7,454.6	1,937.2	-2,969.0	3,528.8	1.04
10,869.0	90.03	309.71	7,455.6	1,995.8	-3,042.5	3,622.8	2.84
10,963.0	90.67	309.71	7,455.0	2,055.9	-3,114.8	3,716.8	0.68
11,057.0	89.16	309.92	7,455.2	2,116.0	-3,187.0	3,810.8	1.62
11,152.0	90.00	310.02	7,455.9	2,177.1	-3,259.8	3,905.8	0.89
11,246.0	90.07	311.37	7,455.8	2,238.4	-3,331.0	3,999.7	1.44
11,340.0	87.31	308.26	7,458.0	2,298.5	-3,403.2	4,093.6	4.42
11,435.0	86.64	307.39	7,463.0	2,356.7	-3,478.1	4,188.5	1.15
11,529.0	89.23	308.56	7,466.4	2,414.5	-3,552.2	4,282.4	3.02
11,623.0	89.66	308.39	7,467.3	2,473.0	-3,625.8	4,376.4	0.49
11,717.0	90.13	308.29	7,467.5	2,531.3	-3,699.5	4,470.4	0.51
11,811.0	89.53	308.00	7,467.7	2,589.3	-3,773.4	4,564.4	0.71
11,906.0	87.99	307.22	7,469.8	2,647.3	-3,848.7	4,659.3	1.82
12,000.0	88.02	307.17	7,473.1	2,704.1	-3,923.5	4,753.3	0.06
12,094.0	88.99	307.08	7,475.5	2,760.8	-3,998.4	4,847.2	1.04
12,188.0	88.99	305.85	7,477.2	2,816.7	-4,074.0	4,941.1	1.31
12,282.0	87.18	305.82	7,480.3	2,871.7	-4,150.2	5,035.0	1.93
12,377.0	87.79	307.35	7,484.5	2,928.2	-4,226.4	5,129.8	1.73
12,471.0	88.56	309.00	7,487.5	2,986.3	-4,300.2	5,223.7	1.94
12,565.0	88.29	308.13	7,490.1	3,044.9	-4,373.7	5,317.7	0.97
12,659.0	88.16	309.24	7,493.0	3,103.6	-4,447.0	5,411.7	1.19
12,754.0	88.05	310.15	7,496.1	3,164.2	-4,520.1	5,506.6	0.96
12,848.0	87.79	309.69	7,499.5	3,224.5	-4,592.1	5,600.5	0.56
12,942.0	89.03	312.06	7,502.1	3,286.0	-4,663.2	5,694.4	2.84
13,036.0	87.25	309.64	7,505.2	3,347.5	-4,734.2	5,788.3	3.19
13,130.0	88.42	311.22	7,508.7	3,408.4	-4,805.7	5,882.1	2.09
13,224.0	88.99	311.53	7,510.9	3,470.5	-4,876.2	5,976.0	0.69
13,318.0	89.50	312.87	7,512.1	3,533.6	-4,945.9	6,069.8	1.53
13,412.0	88.93	309.53	7,513.4	3,595.5	-5,016.6	6,163.7	3.60
13,507.0	88.22	308.59	7,515.8	3,655.4	-5,090.3	6,258.7	1.24
13,601.0	89.70	310.37	7,517.5	3,715.1	-5,162.9	6,352.6	2.46
13,695.0	90.00	308.80	7,517.7	3,775.0	-5,235.3	6,446.6	1.70
13,789.0	89.23	306.88	7,518.3	3,832.7	-5,309.5	6,540.6	2.20
13,883.0	90.20	307.83	7,518.8	3,889.7	-5,384.3	6,634.6	1.44
13,977.0	90.77	308.45	7,518.0	3,947.8	-5,458.2	6,728.6	0.90
14,071.0	90.00	308.15	7,517.4	4,006.0	-5,531.9	6,822.5	0.88
14,166.0	91.01	308.61	7,516.5	4,065.0	-5,606.4	6,917.5	1.17
14,260.0	90.77	306.76	7,515.1	4,122.5	-5,680.8	7,011.5	1.98
14,354.0	92.01	307.67	7,512.8	4,179.3	-5,755.6	7,105.5	1.64
14,448.0	91.10	306.37	7,510.2	4,235.9	-5,830.6	7,199.4	1.69
14,542.0	91.54	306.55	7,508.1	4,291.7	-5,906.2	7,293.3	0.51
14,636.0	92.24	307.52	7,505.0	4,348.3	-5,981.2	7,387.2	1.27

33.05711



EOW Completion Report



Company:	Antero Resources	Local Co-ordinate Reference:	Well Hildred Unit 1H
Project:	Harrison County West Virginia	TVD Reference:	Patterson 347: Hildred 1H 1405 GL + 25 KB @ 14
Site:	Cleta / Opie / Maude Pad	MD Reference:	Patterson 347: Hildred 1H 1405 GL + 25 KB @ 14
Well:	Hildred Unit 1H	North Reference:	Grid
Wellbore:	Original Wellpath	Survey Calculation Method:	Minimum Curvature
Design:	As Drilled	Database:	Oklahoma District

Survey

MD (usft)	Inc (°)	Azi (azimuth) (°)	TVD (usft)	N/S (usft)	E/W (usft)	V. Sec (usft)	DLeg (°/100usft)
14,730.0	92.55	306.08	7,501.1	4,404.6	-6,056.4	7,481.1	1.57
14,824.0	91.21	307.02	7,498.0	4,460.5	-6,131.9	7,575.0	1.74
14,918.0	91.81	309.60	7,495.5	4,518.7	-6,205.6	7,668.9	2.82
15,012.0	90.40	309.79	7,493.7	4,578.8	-6,277.9	7,762.9	1.51
15,107.0	90.27	308.99	7,493.1	4,639.1	-6,351.4	7,857.9	0.85
15,200.0	91.10	309.89	7,492.0	4,698.1	-6,423.2	7,950.8	1.32
15,267.0	91.10	309.80	7,490.7	4,741.0	-6,474.6	8,017.8	0.13
15,328.0	91.10	309.80	7,489.6	4,780.1	-6,521.5	8,078.8	0.00

Design Annotations

Measured Depth (usft)	Vertical Depth (usft)	Local Coordinates		Comment
		+N/-S (usft)	+E/-W (usft)	
6,819.0	6,810.7	-25.0	-101.9	Sycamore
7,060.0	7,033.1	-100.4	-151.9	Middlesex
7,222.0	7,179.8	-121.9	-215.8	Burkett
7,254.0	7,207.2	-122.3	-232.4	Tully
7,386.0	7,307.4	-111.7	-317.0	Hamilton
7,489.0	7,367.7	-88.5	-396.7	Marcellus

Checked By: _____ Approved By: _____ Date: _____