

RECEIVED

AUG 10 2015

WV GEOLOGICAL SURVEY
MORGANTOWN, WV



Antero Resources
Ten Mile Unit 2H
Harrison County West Virginia
Northing: 14235717.88
Easting: 1784988.39
As Drilled

WELL DETAILS: Ten Mile Unit 2H
Ground Level: 1278.0
Northing: 14235717.88
Easting: 1784988.39
+N/S: 0.0
+E/W: 0.0
Longitude: 80° 12' 5.472" W
Latitude: 39° 12' 5.472" N
Slot

PROJECT DETAILS: Harrison County West Virginia
Geodetic System: Universal Transverse Mercator (US Survey Feet)
Datum: NAD 1983 (NAD83 CONUS)
Elevation: Mean Sea Level
Zone: Zone 17N (84 W to 78 W)
System Datum: Mean Sea Level

REFERENCE INFORMATION
Coordinate (NG) Reference: Well Ten Mile Unit 2H, 040 North
Vertical (VD) Reference: Ten Mile Unit 2H, 040 North
Measured Depth Reference: Ten Mile Unit 2H, 040 North
Calculation Method: Minimum Curvature

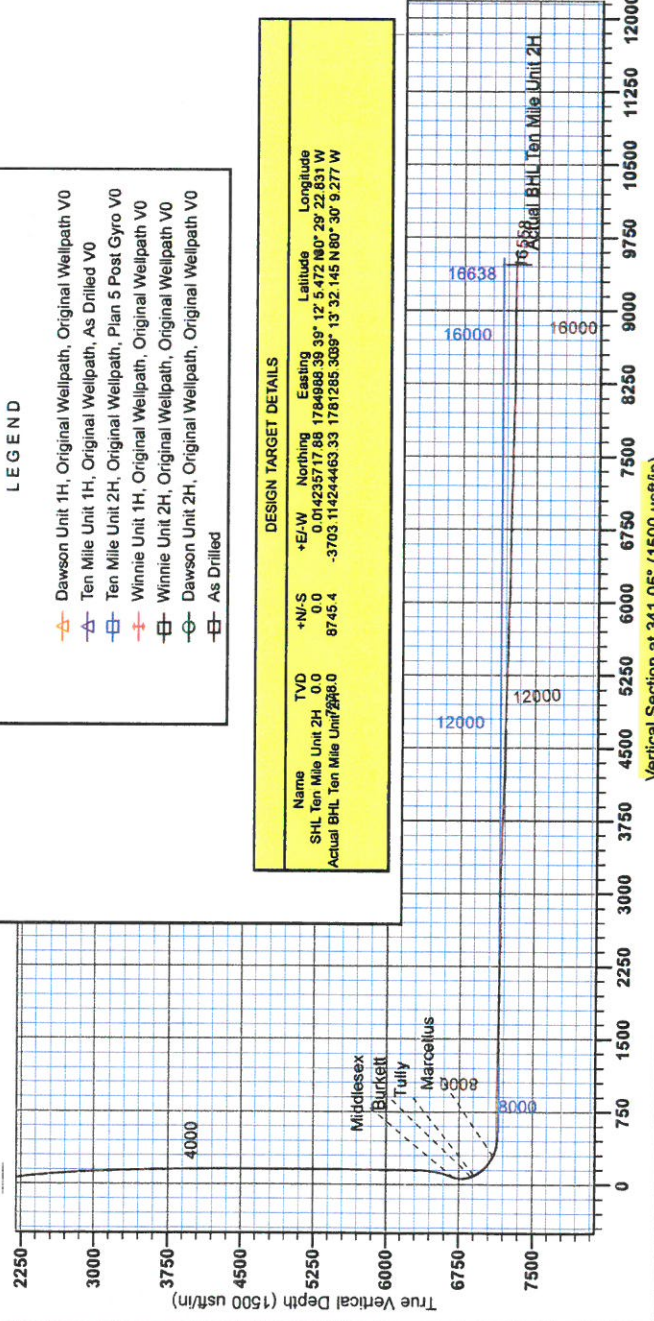
Genie Lightfoot
11:32, August 22 2013
Scientific Drilling
421 South Eagle Lane
Oklahoma City, OK

LEGEND

- Dawson Unit 1H, Original Wellpath, Original Wellpath V0
- Ten Mile Unit 1H, Original Wellpath, As Drilled V0
- Ten Mile Unit 2H, Original Wellpath, Plan 5 Post Gyro V0
- Winnie Unit 1H, Original Wellpath, Original Wellpath V0
- Winnie Unit 2H, Original Wellpath, Original Wellpath V0
- Dawson Unit 2H, Original Wellpath, Original Wellpath V0
- As Drilled

DESIGN TARGET DETAILS

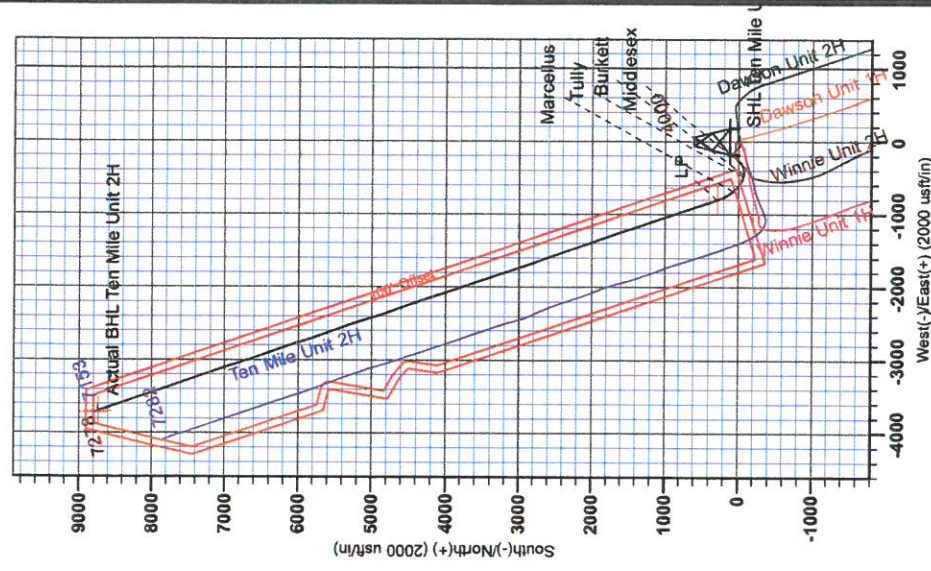
Name	TVD	+N/S	Northing	Easting	Latitude	Longitude
SHL Ten Mile Unit 2H	0.0	0.0	14235717.88	1784988.39	39° 12' 5.472" N	80° 12' 5.472" W
Actual BHL Ten Mile Unit 2H	246.0	8745.4	-3703.114244463	33.1781285	308° 13' 32.145" N	80° 30' 9.277" W



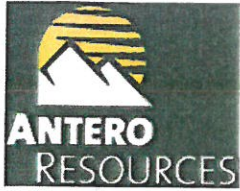
To convert Magnetic North to Grid, Subtract 8.03°
To convert True North to Grid, Subtract 0.32°

Admiralty to Grid North
True North: 0.00°
Magnetic North: -8.03°

Magnetic Field
Strength: 52356.4AsT
Dip Angle: 66.82°
Date: 4/16/2013
Model: IGRF2010



Vertical Section at 341.05° (1500 usf/m)



RECEIVED

AUG 10 2015

WV GEOLOGICAL SURVEY
MORGANTOWN, WV

Antero Resources

**Harrison County West Virginia
Winnie/Dawson/Tenmile Pad
Ten Mile Unit 2H
Original Wellpath**

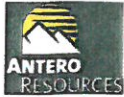
Design: As Drilled

EOW Completion Report

22 August, 2013



AUG 10 2015



WV GEOLOGICAL SURVEY
MORGANTOWN, WV

EOW Completion Report



Company: Antero Resources	Local Co-ordinate Reference: Well Ten Mile Unit 2H
Project: Harrison County West Virginia	TVD Reference: Ten Mile 2H 1278 GL + 25 KB @ 1303.0usft
Site: Winnie/Dawson/Tenmile Pad	MD Reference: Ten Mile 2H 1278 GL + 25 KB @ 1303.0usft
Well: Ten Mile Unit 2H	North Reference: Grid
Wellbore: Original Wellpath	Survey Calculation Method: Minimum Curvature
Design: As Drilled	Database: Oklahoma District

Project	Harrison County West Virginia, Harrison County, USA		
Map System:	Universal Transverse Mercator (US Survey Fee	System Datum:	Mean Sea Level
Geo Datum:	NAD 1927 (NADCON CONUS)		
Map Zone:	Zone 17N (84 W to 78 W)		

Site	Winnie/Dawson/Tenmile Pad			
Site Position:	Northing:	14,235,752.63usft	Latitude:	39° 12' 5.817 N
From: Map	Easting:	1,784,952.46usft	Longitude:	80° 29' 23.285 W
Position Uncertainty: 0.0 usft	Slot Radius:	13-3/16"	Grid Convergence:	0.32 °

Well	Ten Mile Unit 2H, Marcellus			
Well Position	+N/-S	0.0 usft	Northing:	14,235,717.88 usft
	+E/-W	0.0 usft	Easting:	1,784,988.39 usft
Position Uncertainty	2.0 usft	Wellhead Elevation:	1,303.0 usft	Ground Level: 1,278.0 usft

Wellbore	Original Wellpath				
Magnetics	Model Name	Sample Date	Declination (°)	Dip Angle (°)	Field Strength (nT)
	IGRF2010	4/16/2013	-8.61	66.82	52,356

Design	As Drilled			
Audit Notes:				
Version: 1.0	Phase:	ACTUAL	Tie On Depth:	0.0
Vertical Section:	Depth From (TVD) (usft)	+N/-S (usft)	+E/-W (usft)	Direction (°)
	0.0	0.0	0.0	341.05

Survey Program	Date 8/22/2013			
From (usft)	To (usft)	Survey (Wellbore)	Tool Name	Description
112.0	6,181.0	Survey #3 Def Gyro to KOP (Original Well	SDI Standard Keeper	Scientific Drilling Intl. Standard Wireline Keeper
6,224.0	16,558.0	Survey #4 MWD (Original Wellpath)	SDI MWD	Scientific Drilling Intl. MWD - Standard ver 1.0.1

Survey									
MD (usft)	Inc (°)	Azi (azimuth) (°)		TVD (usft)	N/S (usft)	E/W (usft)	V. Sec (usft)	DLeg (°/100usft)	
0.0	0.00	0.00	0.00	0.0	0.0	0.0	0.0	0.0	0.00
112.0	0.20	130.27	112.0	-0.1	0.1	-0.2	0.18		
212.0	0.07	147.40	212.0	-0.3	0.3	-0.4	0.13		
312.0	0.35	143.99	312.0	-0.6	0.5	-0.7	0.28		
412.0	0.23	136.08	412.0	-1.0	0.8	-1.2	0.13		
512.0	0.34	150.32	512.0	-1.4	1.1	-1.7	0.13		
612.0	0.31	131.64	612.0	-1.8	1.5	-2.2	0.11		
712.0	0.30	153.94	712.0	-2.2	1.8	-2.7	0.12		
812.0	0.27	133.04	812.0	-2.6	2.1	-3.2	0.11		
912.0	0.27	152.58	912.0	-3.0	2.4	-3.6	0.09		
1,012.0	0.46	129.61	1,012.0	-3.5	2.8	-4.2	0.24		

AUG 10 2015



WV GEOLOGICAL SURVEY
MORGANTOWN, WV

EOW Completion Report



Company: Antero Resources
Project: Harrison County West Virginia
Site: Winnie/Dawson/Tenmile Pad
Well: Ten Mile Unit 2H
Wellbore: Original Wellpath
Design: As Drilled

Local Co-ordinate Reference: Well Ten Mile Unit 2H
TVD Reference: Ten Mile 2H 1278 GL + 25 KB @ 1303.0usft
MD Reference: Ten Mile 2H 1278 GL + 25 KB @ 1303.0usft
North Reference: Grid
Survey Calculation Method: Minimum Curvature
Database: Oklahoma District

Survey

MD (usft)	Inc (°)	Azi (azimuth) (°)	TVD (usft)	N/S (usft)	E/W (usft)	V. Sec (usft)	DLeg (°/100usft)
1,112.0	0.31	137.52	1,112.0	-3.9	3.3	-4.8	0.16
1,212.0	0.34	127.83	1,212.0	-4.3	3.7	-5.3	0.06
1,312.0	0.33	163.20	1,312.0	-4.8	4.0	-5.8	0.20
1,412.0	3.56	216.34	1,411.9	-7.5	2.3	-7.9	3.37
1,512.0	7.20	232.28	1,511.5	-13.9	-4.5	-11.6	3.90
1,612.0	10.39	253.31	1,610.3	-20.3	-18.1	-13.3	4.48
1,712.0	11.70	277.85	1,708.5	-21.5	-36.8	-8.4	4.84
1,812.0	10.24	302.83	1,806.7	-15.3	-54.4	3.2	4.93
1,912.0	11.12	307.29	1,905.0	-4.6	-69.5	18.2	1.21
2,012.0	10.52	309.01	2,003.2	6.9	-84.3	33.9	0.68
2,112.0	9.17	309.58	2,101.7	17.8	-97.5	48.5	1.35
2,212.0	8.65	309.46	2,200.5	27.6	-109.5	61.7	0.52
2,312.0	7.58	310.12	2,299.5	36.7	-120.3	73.7	1.07
2,412.0	6.83	311.43	2,398.7	44.8	-129.8	84.6	0.77
2,512.0	6.23	310.08	2,498.1	52.3	-138.4	94.4	0.62
2,612.0	5.09	317.51	2,597.6	59.0	-145.6	103.1	1.35
2,712.0	4.25	314.97	2,697.3	64.9	-151.2	110.5	0.86
2,812.0	3.21	311.74	2,797.1	69.4	-155.9	116.3	1.06
2,912.0	3.51	319.33	2,896.9	73.6	-160.0	121.6	0.54
3,012.0	3.08	321.58	2,996.7	78.0	-163.6	126.9	0.45
3,112.0	2.46	320.85	3,096.6	81.8	-166.7	131.5	0.62
3,212.0	2.12	320.96	3,196.5	84.9	-169.2	135.2	0.34
3,312.0	1.94	324.37	3,296.5	87.7	-171.3	138.6	0.22
3,412.0	1.62	326.68	3,396.4	90.3	-173.1	141.6	0.33
3,512.0	1.77	325.42	3,496.4	92.7	-174.8	144.4	0.15
3,612.0	1.16	326.10	3,596.3	94.8	-176.2	146.9	0.61
3,712.0	1.35	335.36	3,696.3	96.7	-177.2	149.1	0.28
3,812.0	0.71	335.81	3,796.3	98.4	-178.0	150.8	0.64
3,912.0	0.57	338.15	3,896.3	99.4	-178.4	152.0	0.14
4,012.0	0.45	339.37	3,996.3	100.2	-178.8	152.8	0.12
4,112.0	0.59	332.34	4,096.3	101.1	-179.1	153.7	0.15
4,212.0	0.51	326.11	4,196.3	101.9	-179.6	154.7	0.10
4,312.0	0.57	315.04	4,296.3	102.6	-180.2	155.6	0.12
4,412.0	0.47	321.03	4,396.3	103.3	-180.8	156.4	0.11
4,512.0	0.19	357.05	4,496.3	103.8	-181.1	156.9	0.34
4,612.0	0.37	115.39	4,596.3	103.8	-180.8	156.9	0.49
4,712.0	0.33	109.88	4,696.3	103.5	-180.3	156.5	0.05
4,812.0	0.37	118.53	4,796.3	103.3	-179.7	156.1	0.07
4,912.0	0.50	148.97	4,896.3	102.8	-179.2	155.4	0.26
5,012.0	0.20	68.84	4,996.3	102.5	-178.8	155.0	0.51
5,112.0	0.13	53.09	5,096.3	102.6	-178.5	155.0	0.08
5,212.0	0.48	144.57	5,196.3	102.3	-178.2	154.6	0.50
5,312.0	0.35	121.17	5,296.3	101.8	-177.7	154.0	0.21
5,412.0	0.41	141.72	5,396.2	101.4	-177.2	153.4	0.15

AUG 10 2015



WV GEOLOGICAL SURVEY
MORGANTOWN, WV

EOW Completion Report



Company: Antero Resources
Project: Harrison County West Virginia
Site: Winnie/Dawson/Tenmile Pad
Well: Ten Mile Unit 2H
Wellbore: Original Wellpath
Design: As Drilled

Local Co-ordinate Reference: Well Ten Mile Unit 2H
TVD Reference: Ten Mile 2H 1278 GL + 25 KB @ 1303.0usft
MD Reference: Ten Mile 2H 1278 GL + 25 KB @ 1303.0usft
North Reference: Grid
Survey Calculation Method: Minimum Curvature
Database: Oklahoma District

Survey

MD (usft)	Inc (°)	Azi (azimuth) (°)	TVD (usft)	N/S (usft)	E/W (usft)	V. Sec (usft)	DLeg (°/100usft)
5,512.0	0.49	145.09	5,496.2	100.7	-176.8	152.7	0.08
5,612.0	0.62	153.23	5,596.2	99.9	-176.3	151.7	0.15
5,712.0	0.35	117.33	5,696.2	99.3	-175.8	151.0	0.39
5,812.0	0.36	122.94	5,796.2	99.0	-175.2	150.5	0.04
5,912.0	0.57	126.14	5,896.2	98.5	-174.6	149.9	0.21
6,012.0	0.64	101.82	5,996.2	98.1	-173.6	149.2	0.26
6,112.0	0.35	117.79	6,096.2	97.8	-172.8	148.7	0.32
6,181.0	0.54	99.98	6,165.2	97.7	-172.3	148.3	0.34
6,224.0	0.88	137.14	6,208.2	97.4	-171.9	147.9	1.29
6,287.0	0.53	132.57	6,271.2	96.9	-171.3	147.2	0.56
6,319.0	0.79	100.23	6,303.2	96.7	-171.0	147.0	1.39
6,364.0	5.72	209.57	6,348.1	94.7	-171.8	145.4	13.39
6,413.0	13.63	220.03	6,396.4	88.2	-176.7	140.8	16.47
6,460.0	19.26	228.99	6,441.5	78.8	-186.1	135.0	13.10
6,508.0	23.30	229.78	6,486.2	67.5	-199.4	128.6	8.44
6,554.0	25.85	228.90	6,528.0	55.0	-213.9	121.5	5.60
6,601.0	30.51	226.70	6,569.4	40.1	-230.3	112.7	10.16
6,647.0	35.79	224.95	6,607.9	22.6	-248.3	102.0	11.66
6,694.0	40.71	224.51	6,644.8	1.9	-268.8	89.1	10.48
6,740.0	41.06	228.02	6,679.6	-18.9	-290.5	76.5	5.05
6,773.0	40.09	233.95	6,704.7	-32.4	-307.2	69.1	12.05
Middlesex							
6,788.0	39.75	236.72	6,716.2	-37.9	-315.1	66.5	12.05
6,834.0	40.01	245.86	6,751.5	-52.0	-340.9	61.5	12.74
6,884.0	40.80	254.30	6,789.6	-63.0	-371.3	61.0	11.05
6,930.0	42.12	263.88	6,824.1	-68.7	-401.2	65.2	14.07
6,977.0	43.26	273.29	6,858.7	-69.5	-432.9	74.9	13.78
7,004.0	43.75	276.25	6,878.3	-68.0	-451.5	82.3	7.76
Burkett							
7,023.0	44.14	278.30	6,892.0	-66.3	-464.5	88.2	7.76
7,043.0	44.58	282.01	6,906.3	-63.8	-478.3	95.0	13.15
Tully							
7,070.0	45.37	286.91	6,925.4	-59.1	-496.8	105.5	13.15
7,116.0	47.04	293.77	6,957.2	-47.5	-527.8	126.5	11.36
7,164.0	48.54	300.27	6,989.5	-31.3	-559.5	152.0	10.50
7,211.0	51.79	305.45	7,019.6	-11.7	-589.7	180.4	10.93
7,258.0	55.40	311.08	7,047.5	11.7	-619.4	212.2	12.32
7,305.0	59.09	315.12	7,073.0	38.7	-648.2	247.1	10.67
7,352.0	63.66	321.10	7,095.5	69.4	-675.7	285.1	14.80
7,359.0	64.57	321.77	7,098.6	74.4	-679.6	291.0	15.58
Marcellus							
7,399.0	69.82	325.41	7,114.1	104.0	-701.5	326.2	15.58
7,446.0	76.94	327.69	7,127.5	141.6	-726.3	369.8	15.84
7,494.0	84.24	328.48	7,135.3	181.8	-751.3	415.9	15.29
7,537.0	89.52	334.19	7,137.7	219.4	-771.9	458.2	18.07

AUG 10 2015



**WV GEOLOGICAL SURVEY
MORGANTOWN, WV**

EOW Completion Report



Company: Antero Resources
Project: Harrison County West Virginia
Site: Winnie/Dawson/Tenmile Pad
Well: Ten Mile Unit 2H
Wellbore: Original Wellpath
Design: As Drilled

Local Co-ordinate Reference: Well Ten Mile Unit 2H
TVD Reference: Ten Mile 2H 1278 GL + 25 KB @ 1303.0usft
MD Reference: Ten Mile 2H 1278 GL + 25 KB @ 1303.0usft
North Reference: Grid
Survey Calculation Method: Minimum Curvature
Database: Oklahoma District

Survey

MD (usft)	Inc (°)	Azi (azimuth) (°)	TVD (usft)	N/S (usft)	E/W (usft)	V. Sec (usft)	DLeg (°/100usft)
7,590.0	91.71	340.44	7,137.1	268.3	-792.3	511.0	12.49
7,632.0	91.24	341.10	7,136.0	307.9	-806.1	553.0	1.93
7,694.0	89.80	342.05	7,135.5	366.7	-825.7	615.0	2.78
7,788.0	90.37	340.17	7,135.3	455.7	-856.2	709.0	2.09
7,883.0	90.17	340.23	7,134.9	545.0	-888.3	804.0	0.22
7,977.0	89.56	339.76	7,135.1	633.4	-920.5	898.0	0.82
8,070.0	90.00	342.16	7,135.5	721.3	-950.8	991.0	2.62
8,164.0	88.66	340.82	7,136.6	810.4	-980.7	1,084.9	2.02
8,258.0	89.26	342.80	7,138.3	899.7	-1,010.0	1,178.9	2.20
8,352.0	88.45	342.50	7,140.1	989.4	-1,038.0	1,272.9	0.92
8,446.0	88.59	340.49	7,142.6	1,078.5	-1,067.9	1,366.8	2.14
8,540.0	88.72	339.74	7,144.8	1,166.9	-1,099.8	1,460.8	0.81
8,634.0	89.90	339.82	7,145.9	1,255.1	-1,132.3	1,554.8	1.26
8,728.0	88.25	342.06	7,147.4	1,343.9	-1,163.0	1,648.7	2.96
8,822.0	90.03	343.45	7,148.8	1,433.7	-1,190.9	1,742.7	2.40
8,916.0	89.87	342.71	7,148.9	1,523.6	-1,218.2	1,836.6	0.81
9,010.0	89.80	342.48	7,149.2	1,613.3	-1,246.3	1,930.6	0.26
9,104.0	88.25	338.28	7,150.8	1,701.8	-1,277.9	2,024.5	4.76
9,198.0	87.92	339.82	7,153.9	1,789.5	-1,311.5	2,118.4	1.67
9,292.0	89.43	341.82	7,156.1	1,878.3	-1,342.3	2,212.4	2.67
9,386.0	89.03	340.34	7,157.4	1,967.2	-1,372.8	2,306.4	1.63
9,480.0	88.46	338.81	7,159.4	2,055.2	-1,405.6	2,400.3	1.74
9,574.0	88.72	339.43	7,161.7	2,143.0	-1,439.1	2,494.2	0.72
9,668.0	90.20	341.42	7,162.6	2,231.6	-1,470.6	2,588.2	2.64
9,762.0	91.17	341.90	7,161.5	2,320.8	-1,500.2	2,682.2	1.15
9,856.0	90.67	341.38	7,160.0	2,410.0	-1,529.8	2,776.2	0.77
9,950.0	90.70	341.02	7,158.9	2,499.0	-1,560.1	2,870.2	0.38
10,044.0	89.80	340.29	7,158.5	2,587.7	-1,591.2	2,964.2	1.23
10,138.0	89.73	339.35	7,158.8	2,675.9	-1,623.6	3,058.2	1.00
10,232.0	88.89	339.12	7,160.0	2,763.8	-1,657.0	3,152.1	0.93
10,326.0	88.89	341.33	7,161.8	2,852.2	-1,688.7	3,246.1	2.35
10,417.0	88.32	342.11	7,164.0	2,938.6	-1,717.3	3,337.0	1.06
10,508.0	89.53	342.09	7,165.7	3,025.2	-1,745.2	3,428.0	1.33
10,599.0	89.36	341.70	7,166.6	3,111.7	-1,773.5	3,519.0	0.47
10,690.0	87.05	341.78	7,169.4	3,198.1	-1,802.0	3,609.9	2.54
10,782.0	86.51	341.42	7,174.6	3,285.2	-1,831.0	3,701.8	0.71
10,873.0	88.86	341.59	7,178.3	3,371.4	-1,859.9	3,792.7	2.59
10,964.0	88.82	342.56	7,180.1	3,458.0	-1,887.9	3,883.7	1.07
11,054.0	87.88	342.20	7,182.7	3,543.7	-1,915.1	3,973.6	1.12
11,146.0	88.45	341.14	7,185.7	3,631.0	-1,944.0	4,065.5	1.31
11,237.0	88.42	341.43	7,188.2	3,717.2	-1,973.2	4,156.5	0.32
11,330.0	89.36	341.70	7,190.0	3,805.4	-2,002.6	4,249.5	1.05
11,420.0	89.19	341.26	7,191.1	3,890.7	-2,031.2	4,339.5	0.52
11,514.0	88.52	339.33	7,193.0	3,979.2	-2,062.9	4,433.4	2.17

AUG 10 2015



**WV GEOLOGICAL SURVEY
MORGANTOWN, WV**

EOW Completion Report



Company: Antero Resources
Project: Harrison County West Virginia
Site: Winnie/Dawson/Tenmile Pad
Well: Ten Mile Unit 2H
Wellbore: Original Wellpath
Design: As Drilled

Local Co-ordinate Reference: Well Ten Mile Unit 2H
TVD Reference: Ten Mile 2H 1278 GL + 25 KB @ 1303.0usft
MD Reference: Ten Mile 2H 1278 GL + 25 KB @ 1303.0usft
North Reference: Grid
Survey Calculation Method: Minimum Curvature
Database: Oklahoma District

Survey

MD (usft)	Inc (°)	Azi (azimuth) (°)	TVD (usft)	N/S (usft)	E/W (usft)	V. Sec (usft)	DLeg (°/100usft)
11,608.0	90.57	344.41	7,193.7	4,068.5	-2,092.1	4,527.4	5.83
11,702.0	88.49	341.63	7,194.5	4,158.4	-2,119.5	4,621.3	3.69
11,796.0	87.58	339.50	7,197.7	4,247.0	-2,150.8	4,715.3	2.46
11,890.0	89.40	340.87	7,200.2	4,335.4	-2,182.7	4,809.2	2.42
11,985.0	88.79	341.09	7,201.7	4,425.2	-2,213.6	4,904.2	0.68
12,079.0	89.26	339.14	7,203.3	4,513.6	-2,245.6	4,998.2	2.13
12,174.0	88.39	338.11	7,205.2	4,602.0	-2,280.2	5,093.1	1.42
12,267.0	87.65	337.39	7,208.5	4,688.0	-2,315.4	5,185.8	1.11
12,361.0	88.62	339.69	7,211.5	4,775.4	-2,349.8	5,279.7	2.65
12,455.0	87.85	340.82	7,214.4	4,863.9	-2,381.5	5,373.6	1.45
12,549.0	87.32	343.01	7,218.4	4,953.1	-2,410.7	5,467.5	2.40
12,643.0	91.27	347.73	7,219.5	5,044.1	-2,434.4	5,561.2	6.55
12,737.0	88.96	344.71	7,219.3	5,135.3	-2,456.8	5,654.8	4.04
12,831.0	88.55	340.79	7,221.4	5,225.1	-2,484.6	5,748.7	4.19
12,925.0	87.55	339.20	7,224.6	5,313.3	-2,516.8	5,842.7	2.00
13,020.0	88.39	339.03	7,227.9	5,402.0	-2,550.6	5,937.6	0.90
13,114.0	88.96	339.43	7,230.1	5,489.9	-2,583.9	6,031.5	0.74
13,208.0	88.79	339.30	7,232.0	5,577.9	-2,617.1	6,125.4	0.23
13,302.0	88.12	339.11	7,234.5	5,665.7	-2,650.4	6,219.3	0.74
13,396.0	88.49	340.54	7,237.3	5,753.9	-2,682.8	6,313.3	1.57
13,490.0	90.10	343.05	7,238.4	5,843.2	-2,712.2	6,407.2	3.17
13,584.0	89.66	342.86	7,238.6	5,933.0	-2,739.7	6,501.2	0.51
13,678.0	89.53	342.34	7,239.3	6,022.7	-2,767.8	6,595.2	0.57
13,773.0	89.50	342.64	7,240.1	6,113.3	-2,796.4	6,690.1	0.32
13,867.0	89.40	340.20	7,241.0	6,202.4	-2,826.4	6,784.1	2.60
13,961.0	89.30	339.75	7,242.1	6,290.7	-2,858.6	6,878.1	0.49
14,055.0	88.62	339.17	7,243.8	6,378.7	-2,891.5	6,972.0	0.95
14,148.0	88.12	339.26	7,246.4	6,465.7	-2,924.5	7,064.9	0.55
14,242.0	87.45	341.27	7,250.1	6,554.1	-2,956.2	7,158.9	2.25
14,336.0	89.10	341.50	7,252.9	6,643.1	-2,986.2	7,252.8	1.77
14,431.0	89.97	343.65	7,253.7	6,733.7	-3,014.7	7,347.8	2.44
14,524.0	89.53	342.78	7,254.1	6,822.8	-3,041.5	7,440.7	1.05
14,618.0	90.67	343.76	7,253.9	6,912.8	-3,068.6	7,534.6	1.60
14,712.0	87.92	340.80	7,255.1	7,002.3	-3,097.2	7,628.6	4.30
14,807.0	88.49	339.67	7,258.0	7,091.7	-3,129.3	7,723.5	1.33
14,901.0	87.72	338.76	7,261.1	7,179.5	-3,162.6	7,817.4	1.27
14,995.0	88.46	340.37	7,264.3	7,267.5	-3,195.4	7,911.3	1.88
15,089.0	89.29	342.53	7,266.1	7,356.6	-3,225.3	8,005.3	2.46
15,182.0	87.48	341.00	7,268.7	7,444.9	-3,254.4	8,098.3	2.55
15,277.0	88.72	340.38	7,271.9	7,534.5	-3,285.8	8,193.2	1.46
15,371.0	91.01	341.08	7,272.1	7,623.2	-3,316.8	8,287.2	2.55
15,465.0	90.47	340.32	7,270.9	7,711.9	-3,347.9	8,381.2	0.99
15,559.0	89.83	339.38	7,270.6	7,800.2	-3,380.3	8,475.2	1.21
15,653.0	89.46	340.42	7,271.2	7,888.5	-3,412.6	8,569.1	1.17
15,747.0	88.62	340.58	7,272.8	7,977.1	-3,444.0	8,663.1	0.91

AUG 10 2015



WV GEOLOGICAL SURVEY
MORGANTOWN, WV

EOW Completion Report



Company: Antero Resources
Project: Harrison County West Virginia
Site: Winnie/Dawson/Tenmile Pad
Well: Ten Mile Unit 2H
Wellbore: Original Wellpath
Design: As Drilled

Local Co-ordinate Reference: Well Ten Mile Unit 2H
TVD Reference: Ten Mile 2H 1278 GL + 25 KB @ 1303.0usft
MD Reference: Ten Mile 2H 1278 GL + 25 KB @ 1303.0usft
North Reference: Grid
Survey Calculation Method: Minimum Curvature
Database: Oklahoma District

Survey

MD (usft)	Inc (°)	Azi (azimuth) (°)	TVD (usft)	N/S (usft)	E/W (usft)	V. Sec (usft)	DLeg (°/100usft)
15,841.0	90.13	340.45	7,273.8	8,065.7	-3,475.3	8,757.1	1.61
15,935.0	90.64	342.29	7,273.2	8,154.7	-3,505.3	8,851.1	2.03
16,029.0	90.17	342.06	7,272.5	8,244.2	-3,534.1	8,945.1	0.56
16,122.0	88.39	340.47	7,273.7	8,332.3	-3,564.0	9,038.1	2.57
16,217.0	90.10	341.52	7,275.0	8,422.1	-3,594.9	9,133.0	2.11
16,311.0	88.59	340.97	7,276.0	8,511.1	-3,625.1	9,227.0	1.71
16,405.0	89.80	341.75	7,277.4	8,600.1	-3,655.2	9,321.0	1.53
16,500.0	89.77	341.75	7,277.7	8,690.4	-3,684.9	9,416.0	0.03
16,538.0	89.66	341.75	7,277.9	8,726.5	-3,696.8	9,454.0	0.29
16,558.0	89.66	341.75	7,278.0	8,745.4	-3,703.1	9,474.0	0.00

Design Annotations

Measured Depth (usft)	Vertical Depth (usft)	Local Coordinates		Comment
		+N/-S (usft)	+E/-W (usft)	
6,773.0	6,704.7	-32.4	-307.2	Middlesex
7,004.0	6,878.3	-68.0	-451.5	Burkett
7,043.0	6,906.3	-63.8	-478.3	Tully
7,359.0	7,098.6	74.4	-679.6	Marcellus

Checked By: _____ Approved By: _____ Date: _____