

# RECEIVED

AUG 10 2015

WR-35  
Rev. 8/23/13

Page \_\_\_ of \_\_\_

WV GEOLOGICAL SURVEY  
MORGANTOWN, WV

State of West Virginia  
Department of Environmental Protection - Office of Oil and Gas  
Well Operator's Report of Well Work

API 47-033-05696 County Harrison District Union  
Quad West Milford & Big Isaac Pad Name Bowyer Pad Field/Pool Name \_\_\_\_\_  
Farm name Bowyer, Matt E. & Lisa Devought Well Number Ten Mile Unit 2H  
Operator (as registered with the OOG) Antero Resources Corporation  
Address 1615 Wynkoop Street City Denver State CO Zip 80202

As Drilled location NAD 83/UTM Attach an as-drilled plat, profile view, and deviation survey  
Top hole Northing 4,339,273.962m Easting 544,080.190m  
Landing Point of Curve Northing 4,339,340.87 Easting 543,844.99  
Bottom Hole Northing 4,341,939.584m Easting 542,951.486m

Elevation (ft) 1,278' GL Type of Well  New  Existing Type of Report  Interim  Final  
Permit Type  Deviated  Horizontal  Horizontal 6A  Vertical Depth Type  Deep  Shallow  
Type of Operation  Convert  Deepen  Drill  Plug Back  Redrilling  Rework  Stimulate  
Well Type  Brine Disposal  CBM  Gas  Oil  Secondary Recovery  Solution Mining  Storage  Other \_\_\_\_\_  
Type of Completion  Single  Multiple Fluids Produced  Brine  Gas  NGL  Oil  Other \_\_\_\_\_  
Drilled with  Cable  Rotary

Drilling Media Surface hole  Air  Mud  Fresh Water Intermediate hole  Air  Mud  Fresh Water  Brine  
Production hole  Air  Mud  Fresh Water  Brine  
Mud Type(s) and Additive(s)  
Air- Foam & 4% KCL  
Mud- Polymer

Date permit issued 12/26/2012 Date drilling commenced 03/28/2013 Date drilling ceased 08/06/2013  
Date completion activities began 09/17/2013 Date completion activities ceased 03/30/2014  
Verbal plugging (Y/N) N/A Date permission granted N/A Granted by N/A

Please note: Operator is required to submit a plugging application within 5 days of verbal permission to plug

Freshwater depth(s) ft 102', 204' Open mine(s) (Y/N) depths No  
Salt water depth(s) ft 1,466'; 1,762' Void(s) encountered (Y/N) depths None  
Coal depth(s) ft 391' Cavern(s) encountered (Y/N) depths None  
Is coal being mined in area (Y/N) No

Reviewed by: \_\_\_\_\_

AUG 10 2015

WR-35 Rev. 8/23/13

WV GEOLOGICAL SURVEY MORGANTOWN, WV

Page \_\_\_ of \_\_\_

API 47-033 - 05696 Farm name Bowyer, Matt E. & Lisa Devought Well number Ten Mile Unit 2H

Table with 8 columns: CASING STRINGS, Hole Size, Casing Size, Depth, New or Used, Grade wt/ft, Basket Depth(s), Did cement circulate (Y/N). Rows include Conductor, Surface, Coal, Intermediate 1-3, Production, Tubing, and Packer type and depth set.

Comment Details \_\_\_\_\_

Table with 8 columns: CEMENT DATA, Class/Type of Cement, Number of Sacks, Slurry wt (ppg), Yield (ft³/sks), Volume (ft³), Cement Top (MD), WOC (hrs). Rows include Conductor, Surface, Coal, Intermediate 1-3, Production, and Tubing.

Drillers TD (ft) 16,558' MD; 7,278' TVD Loggers TD (ft) 16,543'

Deepest formation penetrated Marcellus Plug back to (ft) N/A

Plug back procedure N/A

Kick off depth (ft) 6,364'

\*\*This is a subsequent well. Antero only runs wireline logs on one well on a multi-well pad (Winnie Unit 2H, API #47-033-05615). Please reference the wireline logs submitted with Form WR-35 for the Winnie Unit 2H. A Cement Bond Log has been included with this submittal.

Check all wireline logs run \*\* [ ] caliper [ ] density [ ] deviated/directional [ ] induction [ ] neutron [ ] resistivity [ ] gamma ray [ ] temperature [ ] sonic

Well cored [ ] Yes [x] No Conventional [ ] Sidewall Were cuttings collected [ ] Yes [x] No

DESCRIBE THE CENTRALIZER PLACEMENT USED FOR EACH CASING STRING \_\_\_\_\_

Conductor- 0
Surface- 1 above guide shoe, 1 above insert float, 1 every 4th joint to surface
Intermediate- 1 above float joint, 1 above float collar, 1 every 4th joint to surface
Production- 1 above float joint, 1 below float collar, 1 every 3rd joint to top of cement

WAS WELL COMPLETED AS SHOT HOLE [ ] Yes [x] No DETAILS \_\_\_\_\_

WAS WELL COMPLETED OPEN HOLE? [ ] Yes [x] No DETAILS \_\_\_\_\_

WERE TRACERS USED [ ] Yes [x] No TYPE OF TRACER(S) USED \_\_\_\_\_





**RECEIVED**  
 AUG 10 2015  
 WV GEOLOGICAL SURVEY  
 MORGANTOWN, WV

API 47-033-05696 Farm Name Nowyer, Matt E. & Lisa Devought Well Number Ten Mile Unit 2H

**EXHIBIT 1**

Stage No.	Perforation Date	Perforated from MD ft.	Perforated to MD ft.	Number of Perforations	Formations
1	17-Sep-13	16,219	16,494	60	Marcellus
2	16-Feb-14	15,993	16,184	60	Marcellus
3	17-Feb-14	15,766	15,957	60	Marcellus
4	17-Feb-14	15,539	15,730	60	Marcellus
5	17-Feb-14	15,313	15,504	60	Marcellus
6	18-Feb-14	15,086	15,277	60	Marcellus
7	18-Feb-14	14,859	15,050	60	Marcellus
8	18-Feb-14	14,633	14,824	60	Marcellus
9	18-Feb-14	14,406	14,597	60	Marcellus
10	19-Feb-14	14,179	14,370	60	Marcellus
11	19-Feb-14	13,953	14,143	60	Marcellus
12	19-Feb-14	13,726	13,917	60	Marcellus
13	19-Feb-14	13,499	13,690	60	Marcellus
14	20-Feb-14	13,273	13,463	60	Marcellus
15	20-Feb-14	13,046	13,237	60	Marcellus
16	20-Feb-14	12,819	13,010	60	Marcellus
17	21-Feb-14	12,592	12,783	60	Marcellus
18	21-Feb-14	12,366	12,557	60	Marcellus
19	21-Feb-14	12,139	12,330	60	Marcellus
20	21-Feb-14	11,912	12,103	60	Marcellus
21	22-Feb-14	11,686	11,877	60	Marcellus
22	22-Feb-14	11,459	11,650	60	Marcellus
23	22-Feb-14	11,232	11,423	60	Marcellus
24	22-Feb-14	11,006	11,197	60	Marcellus
25	22-Feb-14	10,779	10,970	60	Marcellus
26	23-Feb-14	10,552	10,743	60	Marcellus
27	23-Feb-14	10,326	10,517	60	Marcellus
28	23-Feb-14	10,099	10,290	60	Marcellus
29	23-Feb-14	9,872	10,063	60	Marcellus
30	24-Feb-13	9,646	9,837	60	Marcellus
31	24-Feb-14	9,419	9,610	60	Marcellus
32	24-Feb-14	9,192	9,383	60	Marcellus
33	24-Feb-14	8,966	9,156	60	Marcellus
34	25-Feb-14	8,739	8,930	60	Marcellus
35	25-Feb-14	8,512	8,703	60	Marcellus
36	25-Feb-14	8,286	8,476	60	Marcellus
37	25-Feb-14	8,059	8,250	60	Marcellus
38	25-Feb-14	7,832	8,023	60	Marcellus
39	26-Feb-14	7,606	7,796	60	Marcellus
40	26-Feb-14	7,379	7,570	60	Marcellus

**RECEIVED**  
**AUG 10 2015**  
**WV GEOLOGICAL SURVEY**  
**MORGANTOWN, WV**

API 47-033-05696 Farm Name Bowyer, Matt E. & Lisa Devought Well Number Ten Mile Unit 2H

**EXHIBIT 2**

Stage No.	Stimulations Date	Avg Pump Rate	Avg Treatment Pressure (PSI)	Max Breakdown Pressure (PSI)	ISIP (PSI)	Amount of Proppant (lbs)	Amount of Water (bbls)	Amount of Nitrogen/ other (units)
1	16-Feb-14	79.0	7,936	6,261	5,169	271,605	7,080	N/A
2	16-Feb-14	74.0	8,020	6,445	4,500	272,087	7,092	N/A
3	17-Feb-14	76.0	8,134	6,719	4,301	273,121	7,614	N/A
4	17-Feb-14	79.0	8,060	6,840	4,580	274,531	6,920	N/A
5	17-Feb-14	69.0	7,863	6,506	4,728	271,355	7,076	N/A
6	18-Feb-14	66.0	7,475	6,305	5,114	215,705	7,496	N/A
7	18-Feb-14	77.0	8,002	6,608	4,657	272,164	6,961	N/A
8	18-Feb-14	75.0	7,935	6,306	4,540	247,670	7,641	N/A
9	18-Feb-14	76.0	7,775	6,565	4,216	274,573	7,014	N/A
10	19-Feb-14	75.0	7,741	6,666	4,563	272,960	6,893	N/A
11	19-Feb-14	78.0	7,699	5,980	4,803	272,829	6,858	N/A
12	19-Feb-14	74.0	7,962	6,259	5,324	201,193	7,059	N/A
13	19-Feb-14	74.0	7,929	6,319	4,723	270,859	6,810	N/A
14	20-Feb-14	74.0	7,796	5,884	4,667	272,413	6,787	N/A
15	20-Feb-14	76.0	7,965	6,194	4,610	243,112	7,280	N/A
16	20-Feb-14	79.0	7,549	5,986	4,322	275,056	6,910	N/A
17	21-Feb-14	79.0	7,369	5,709	4,603	279,142	7,057	N/A
18	21-Feb-14	78.0	7,143	5,922	5,564	271,400	6,761	N/A
19	21-Feb-14	78.0	7,260	5,736	5,298	271,530	7,151	N/A
20	21-Feb-14	78.0	6,581	5,984	4,896	1,770,254	6,727	N/A
21	22-Feb-14	79.0	6,969	6,080	4,560	273,937	6,775	N/A
22	22-Feb-14	78.0	7,031	5,736	4,419	275,561	6,719	N/A
23	22-Feb-14	79.0	7,355	5,535	4,248	272,748	6,637	N/A
24	22-Feb-14	79.0	7,319	6,086	4,235	272,126	6,699	N/A
25	22-Feb-14	73.0	7,524	6,049	5,373	197,403	6,997	N/A
26	23-Feb-14	73.0	7,524	6,049	5,373	197,403	6,997	N/A
27	23-Feb-14	78.0	7,665	6,121	4,907	269,978	6,617	N/A
28	23-Feb-14	76.0	7,822	5,667	5,944	236,725	7,220	N/A
29	23-Feb-14	76.0	7,171	5,867	5,725	208,613	6,953	N/A
30	24-Feb-13	78.0	7,183	6,587	4,547	273,904	6,663	N/A
31	24-Feb-14	78.0	6,772	6,209	4,692	271,009	6,636	N/A
32	24-Feb-14	78.0	6,976	5,724	5,304	271,906	6,569	N/A
33	24-Feb-14	81.0	6,990	5,940	4,475	274,001	6,571	N/A
34	25-Feb-14	81.0	7,082	6,204	4,515	274,138	6,536	N/A
35	25-Feb-14	74.0	7,180	6,520	4,770	275,140	6,592	N/A
36	25-Feb-14	77.0	6,938	5,899	4,565	271,761	6,464	N/A
37	25-Feb-14	80.0	6,719	5,660	4,782	271,931	6,448	N/A
38	25-Feb-14	81.0	6,737	5,902	5,148	276,649	6,562	N/A
39	26-Feb-14	81.0	6,839	6,367	5,041	277,368	6,555	N/A
40	26-Feb-14	77.0	6,768	6,184	4,510	253,175	6,227	N/A
	AVG=	<b>76.8</b>	<b>7,419</b>	<b>6,140</b>	<b>4,808</b>	<b>11,969,035</b>	<b>274,624</b>	TOTAL

**RECEIVED**  
 AUG 10 2015  
 WV GEOLOGICAL SURVEY  
 MORGANTOWN, WV

API 47-033-05696 Farm Name Bowyer, Matt E. & Lisa Devought Well Number Ten Mile Unit 2H

**EXHIBIT 3**

LITHOLOGY/ FORMATION	TOP DEPTH (TVD)	BOTTOM DEPTH (TVD)	TOP DEPTH (MD)	BOTTOM DEPTH (MD)
	From Surface	From Surface	From Surface	From Surface
Fresh Water	102'	N/A	102'	N/A
Fresh Water	204'	N/A	204'	N/A
Sandy Siltstone	0	281	0	281
Siltstone	est. 281	326	est. 281	326
Sandstone	est. 326	391	est. 326	391
Coal	est. 391	421	est. 391	421
Sandstone	est. 421	571	est. 421	571
Sandy Shale	est. 571	876	est. 571	876
Sandstone	est. 876	1,026	est. 876	1,026
Shale	est. 1026	1,071	est. 1026	1,071
Sandstone	est. 1071	1,176	est. 1071	1,176
Sandy Shale	est. 1176	1,266	est. 1176	1,266
Sandy Siltstone	est. 1266	1,326	est. 1266	1,326
Shale	est. 1326	1,416	est. 1326	1,416
Sandstone	est. 1416	1,476	est. 1416	1,476
Shale	est. 1476	1,526	est. 1476	1,526
Limey Shale	est. 1526	1,748	est. 1526	1,753
Big Lime	1,748	4,862	1,753	1,868
Big Injun	4,862	2,110	1,868	2,120
Gantz Sand	2,110	2,227	2,120	2,239
Fifty Foot Sandstone	2,227	2,330	2,239	2,343
Gordon	2,330	2,564	2,343	2,578
Fifth Sandstone	2,564	2,632	2,578	2,647
Bayard	2,632	3,049	2,647	3,064
Warren	3,049	3,325	3,064	3,341
Speechley	3,325	3,563	3,341	3,579
Baltown	3,563	4,074	3,579	4,090
Bradford	4,074	4,724	4,090	4,739
Benson	4,724	5,041	4,739	5,057
Alexander	5,041	5,329	5,057	5,345
Elk	5,329	5,627	5,345	5,642
Rhinestreet	5,627	6,870	5,642	7,185
Sycamore	6,418	6,681	6,437	6,749
Middlesex	6,681	6,854	6,749	6,980
Burkett	6,854	6,882	6,980	7,019
Tully	6,882	7,074	7,019	7,335
Marcellus	7,074	NA	7,335	NA

\*Please note Antero determines shallow formation tops based on mud logs that are only run on one well on a multi-well pad. The measured depth (MD) data on subsequent wells may be slightly different due to the well's unique departure.

**RECEIVED**  
AUG 10 2015

WV GEOLOGICAL SURVEY  
MORGANTOWN, WV



**Hydraulic Fracturing Fluid Product Component Information Disclosure**

Job Start Date:	2/16/2014
Job End Date:	2/26/2014
State:	West Virginia
County:	Harrison
API Number:	47-033-05696-00-00
Operator Name:	Antero Resources Corporation
Well Name and Number:	Tenmile Unit 2H
Longitude:	-80.48967500
Latitude:	39.20151900
Datum:	NAD27
Federal/Tribal Well:	NO
True Vertical Depth:	7,278
Total Base Water Volume (gal):	12,199,698
Total Base Non Water Volume:	0

**Hydraulic Fracturing Fluid Composition:**

Trade Name	Supplier	Purpose	Ingredients	Chemical Abstract Service Number (CAS #)	Maximum Ingredient Concentration in Additive (% by mass)**	Maximum Ingredient Concentration in HF Fluid (% by mass)**	Comments
Water	Operator	Carrier	Water	7732-18-5	100.00000	90.19479	
Sand, White, 40/70	Baker Hughes	Proppant	Crystalline Silica (Quartz)	14808-60-7	100.00000	5.53474	
Sand, White, 20/40	Baker Hughes	Proppant	Crystalline Silica (Quartz)	14808-60-7	100.00000	3.07666	
Sand, White, 100 mesh	Baker Hughes	Proppant	Crystalline Silica (Quartz)	14808-60-7	100.00000	0.73620	
HCl, 10.1 - 15%	Baker Hughes	Acidizing	Water	7732-18-5	85.00000	0.17123	SmartCare Product
			Hydrochloric Acid	7647-01-0	15.00000	0.03022	SmartCare Product
GW-3LDF	Baker Hughes	Gelling Agent	Guar Gum	9000-30-0	60.00000	0.05418	SmartCare Product
			Paraffinic Petroleum Distillate	64742-55-8	30.00000	0.02709	SmartCare Product
			Petroleum Distillates	64742-47-8	30.00000	0.02709	SmartCare Product
			isotridecanol, ethoxylated	9043-30-5	5.00000	0.00452	SmartCare Product
			Crystalline Silica: Quartz	14808-60-7	5.00000	0.00452	SmartCare Product
			1-butoxy-2-propanol	5131-66-8	5.00000	0.00452	SmartCare Product
FRW-18	Baker Hughes	Friction Reducer					



Enzyme G-NE	Baker Hughes	Breaker	Petroleum Distillates	64742-47-8	30.00000	0.01836	SmartCare Product
Alpha 1427	Baker Hughes	Biocide	No hazardous ingredients	NA	100.00000	0.01332	SmartCare Product
			Glutaraldehyde	111-30-8	30.00000	0.00415	SmartCare Product
			Didecyl Dimethyl Ammonium Chloride	7173-51-5	10.00000	0.00138	SmartCare Product
			Quaternary Ammonium Compound	68424-85-1	5.00000	0.00069	SmartCare Product
Scaletrol 720	Baker Hughes	Scale Inhibitor	Ethanol	64-17-5	5.00000	0.00069	SmartCare Product
			Ethylene Glycol	107-21-1	30.00000	0.00448	SmartCare Product
Ferrotrol 300L	Baker Hughes	Iron Control	Calcium Chloride	10043-52-4	5.00000	0.00075	SmartCare Product
Cl-14	Baker Hughes	Corrosion Inhibitor	Citric Acid	77-92-9	60.00000	0.00079	SmartCare Product
			Methanol	67-56-1	100.00000	0.00031	SmartCare Product
			Polyoxyalkylenes	Trade Secret	30.00000	0.00009	SmartCare Product
			Fatty Acids	Trade Secret	10.00000	0.00003	SmartCare Product
			Propargyl Alcohol	107-19-7	5.00000	0.00002	SmartCare Product
			Olefin	Trade Secret	5.00000	0.00002	SmartCare Product
Ingredients shown above are subject to 29 CFR 1910.1200(i) and appear on Material Safety Data Sheets (MSDS). Ingredients shown below are Non-MSDS.							
			Other Chemicals				
			Water	7732-18-5		0.05969	
			Poly (acrylamide-co-acrylic acid)	Trade Secret		0.01836	
			Sorbitan Monooleate	Trade Secret		0.00306	
			Salt	Trade Secret		0.00306	
			Polyacrylate	Trade Secret		0.00298	
			Ethoxylated Alcohol	Trade Secret		0.00122	
			Hemicellulase Enzyme Concentrate	9025-56-3		0.00067	
			2-butoxy-1-propanol	15821-83-7		0.00009	
			Modified Thiorea Polymer	68527-49-1		0.00002	
			Potassium Chloride	7447-40-7		0.00001	
			Sodium Chloride	7647-14-5		0.00000	
			Formaldehyde	50-00-0		0.00000	
			Hydrochloric Acid	7647-01-0		0.00000	

\* Total Water Volume sources may include fresh water, produced water, and/or recycled water  
\*\* Information is based on the maximum potential for concentration and thus the total may be over 100%

Note: For Field Development Products (products that begin with FDP), MSDS level only information has been provided. Ingredient information for chemicals subject to 29 CFR 1910.1200(i) and Appendix D are obtained from suppliers Material Safety Data Sheets (MSDS)

**RECEIVED**

AUG 10 2015

WV GEOLOGICAL SURVEY  
MORGANTOWN, WV

829' to Bottom Hole

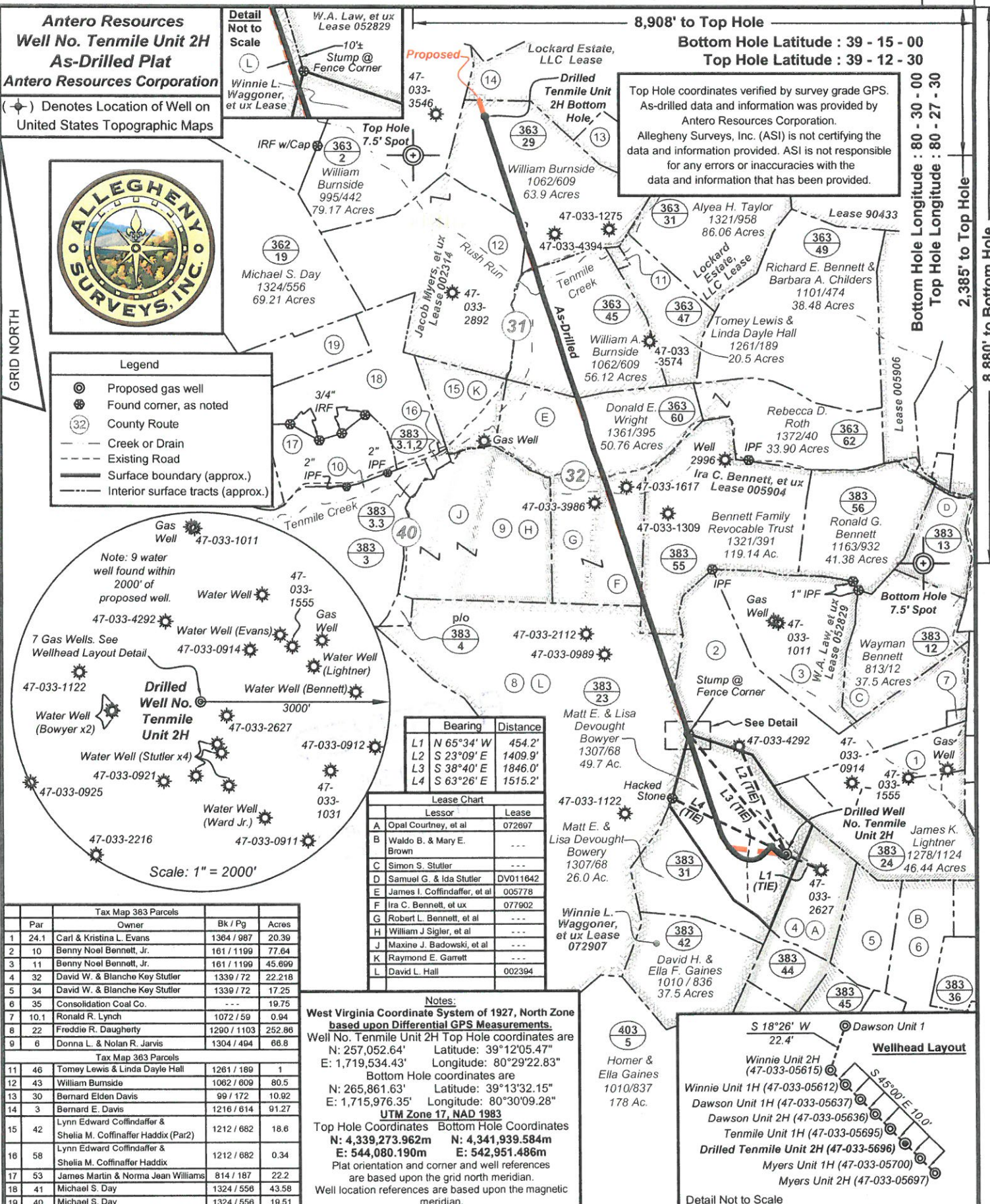
8,908' to Top Hole

Bottom Hole Latitude : 39 - 15 - 00  
Top Hole Latitude : 39 - 12 - 30

Bottom Hole Longitude : 80 - 30 - 00  
Top Hole Longitude : 80 - 27 - 30

Bottom Hole Longitude : 80 - 30 - 00  
Top Hole Longitude : 80 - 27 - 30

2,385' to Top Hole  
8,880' to Bottom Hole



**Antero Resources**  
Well No. **Tenmile Unit 2H**  
**As-Drilled Plat**  
**Antero Resources Corporation**

(\*) Denotes Location of Well on United States Topographic Maps

**Detail Not to Scale**

W.A. Law, et ux  
Lease 052829

10'±  
Stump @  
Fence Corner

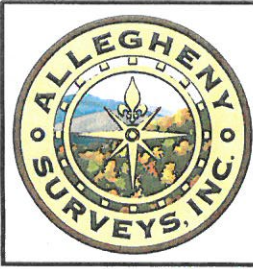
47-033-3546

Proposed

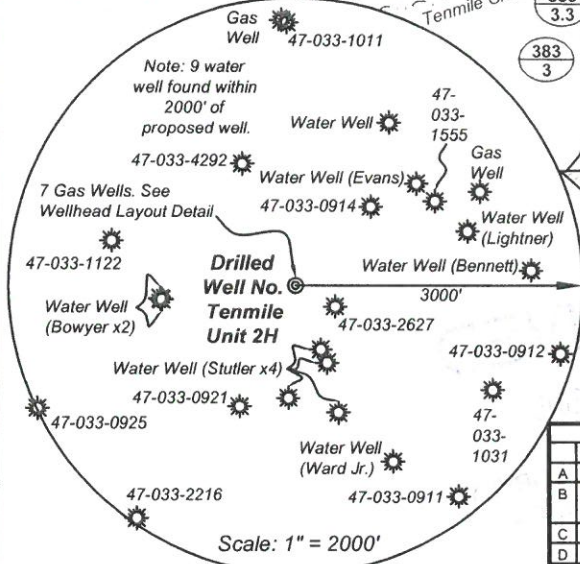
Lockard Estate, LLC Lease

Drilled Tenmile Unit 2H Bottom Hole

Top Hole coordinates verified by survey grade GPS. As-drilled data and information was provided by Antero Resources Corporation. Allegheny Surveys, Inc. (ASI) is not certifying the data and information provided. ASI is not responsible for any errors or inaccuracies with the data and information that has been provided.



- Legend**
- ⊙ Proposed gas well
  - ⊙ Found corner, as noted
  - ⊙ County Route
  - Creek or Drain
  - Existing Road
  - Surface boundary (approx.)
  - Interior surface tracts (approx.)



	Bearing	Distance
L1	N 65°34' W	454.2'
L2	S 23°09' E	1409.9'
L3	S 38°40' E	1846.0'
L4	S 63°26' E	1515.2'

Lessors	Lease
A Opal Courtney, et al	072897
B Waldo B. & Mary E. Brown	---
C Simon S. Stutler	---
D Samuel G. & Ida Stutler	DV011842
E James I. Coffindaffer, et al	005778
F Ira C. Bennett, et ux	077902
G Robert L. Bennett, et al	---
H William J. Sigler, et al	---
J Maxine J. Badowski, et al	---
K Raymond E. Garrett	---
L David L. Hall	002394

Par	Owner	Bk / Pg	Acres
1	24.1 Carl & Kristina L. Evans	1364 / 987	20.39
2	10 Benny Noel Bennett, Jr.	161 / 1199	77.64
3	11 Benny Noel Bennett, Jr.	161 / 1199	45.699
4	32 David W. & Blanche Key Stutler	1339 / 72	22.218
5	34 David W. & Blanche Key Stutler	1339 / 72	17.25
6	35 Consolidation Coal Co.	---	19.75
7	10.1 Ronald R. Lynch	1072 / 59	0.94
8	22 Freddie R. Daugherty	1290 / 1103	252.96
9	6 Donna L. & Nolan R. Jarvis	1304 / 494	66.8

Parcel	Owner	Acres	
11	46 Tomey Lewis & Linda Dayle Hall	1261 / 189	1
12	43 William Burnsides	1062 / 609	80.5
13	30 Bernard Elden Davis	99 / 172	10.92
14	3 Bernard E. Davis	1216 / 614	91.27
15	42 Lynn Edward Coffinaffer & Shelia M. Coffinaffer Haddix (Par2)	1212 / 682	18.6
16	58 Lynn Edward Coffinaffer & Shelia M. Coffinaffer Haddix	1212 / 682	0.34
17	53 James Martin & Norma Jean Williams	814 / 187	22.2
18	41 Michael S. Day	1324 / 556	43.58
19	40 Michael S. Day	1324 / 556	19.51

**Notes:**

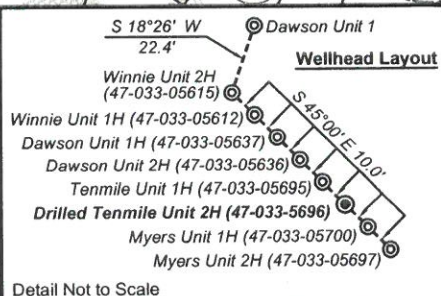
West Virginia Coordinate System of 1927, North Zone based upon Differential GPS Measurements.

Well No. Tenmile Unit 2H Top Hole coordinates are  
N: 257,052.64' Latitude: 39°12'05.47"  
E: 1,719,534.43' Longitude: 80°29'22.83"

Bottom Hole coordinates are  
N: 265,861.63' Latitude: 39°13'32.15"  
E: 1,715,976.35' Longitude: 80°30'09.28"

UTM Zone 17, NAD 1983  
Top Hole Coordinates Bottom Hole Coordinates  
N: 4,339,273.962m N: 4,341,939.584m  
E: 544,080.190m E: 542,951.486m

Plat orientation and corner and well references are based upon the grid north meridian.  
Well location references are based upon the magnetic meridian.



FILE NO: 164-36-U-12  
DRAWING NO: 164-12 Tenmile 2H As-Drilled  
SCALE: 1" = 1500'  
MINIMUM DEGREE OF ACCURACY: Submeter  
PROVEN SOURCE OF ELEVATION: WVDOT, BRIDGEPORT, WV

**STATE OF WEST VIRGINIA**  
DEPARTMENT OF ENVIRONMENTAL PROTECTION  
**OIL AND GAS DIVISION**

DATE: July 27 2015  
OPERATOR'S WELL NO. Tenmile Unit 2H  
API WELL NO  
47 - 033 - 05696  
STATE COUNTY PERMIT

WELL TYPE:  OIL  GAS  LIQUID INJECTION  WASTE DISPOSAL  
(IF GAS) PRODUCTION:  STORAGE  DEEP  SHALLOW

LOCATION: ELEVATION: Existing Grade 1278' WATERSHED: Middle West Fork River QUADRANGLE: West Milford & Big Issac

DISTRICT: Union COUNTY: Harrison

SURFACE OWNER: Matt E. & Lisa Devought Bowyer ACREAGE: 49.7 111.3; 255; 18.75; 120;

ROYALTY OWNER: James I. Coffindaffer, et al; Robert L. Bennett, et al; David L. Hall LEASE NO: 005904; 005778 ACREAGE: 20.5; 54.12; 177

PROPOSED WORK:  DRILL  CONVERT  DRILL DEEPER  FRACTURE OR STIMULATE  PLUG OFF OLD FORMATION  
 PERFORATE NEW FORMATION  OTHER PHYSICAL CHANGE IN WELL (SPECIFY) As-Drilled 7,278' TVD  
 PLUG AND ABANDON  CLEAN OUT AND REPLUG TARGET FORMATION: Marcellus Shale DEPTH: 16,558' MD

WELL OPERATOR: Antero Resources Corporation DESIGNATED AGENT: Dianna Stamper - CT Corporation System  
ADDRESS: 1615 Wynkoop Street ADDRESS: 5400 D Big Tyler Road  
Denver, CO 80202 Charleston, WV 25313