



Antero Resources
 Nellie Unit 2H
 Harrison County West Virginia
 Northing: 14254504.12
 Easting: 1764874.96
 As Drilled

WELL DETAILS Nellie Unit 2H

Ground Level	1376.0	Slot	
+N/-S	+E/W	Northing	Longitude
0.0	0.0	14254504.12	1764874.96
		30° 15' 12.202" N	80° 33' 37.250" W

REFERENCE INFORMATION
 Coordinates (N/E) Reference: Well Nellie Unit 2H, USAD North
 True North (T/N) Reference: Well Nellie Unit 2H, USAD North
 Magnetic North (M/N) Reference: Well Nellie Unit 2H, USAD North
 Calculation Method: North Magnetic Component



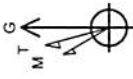
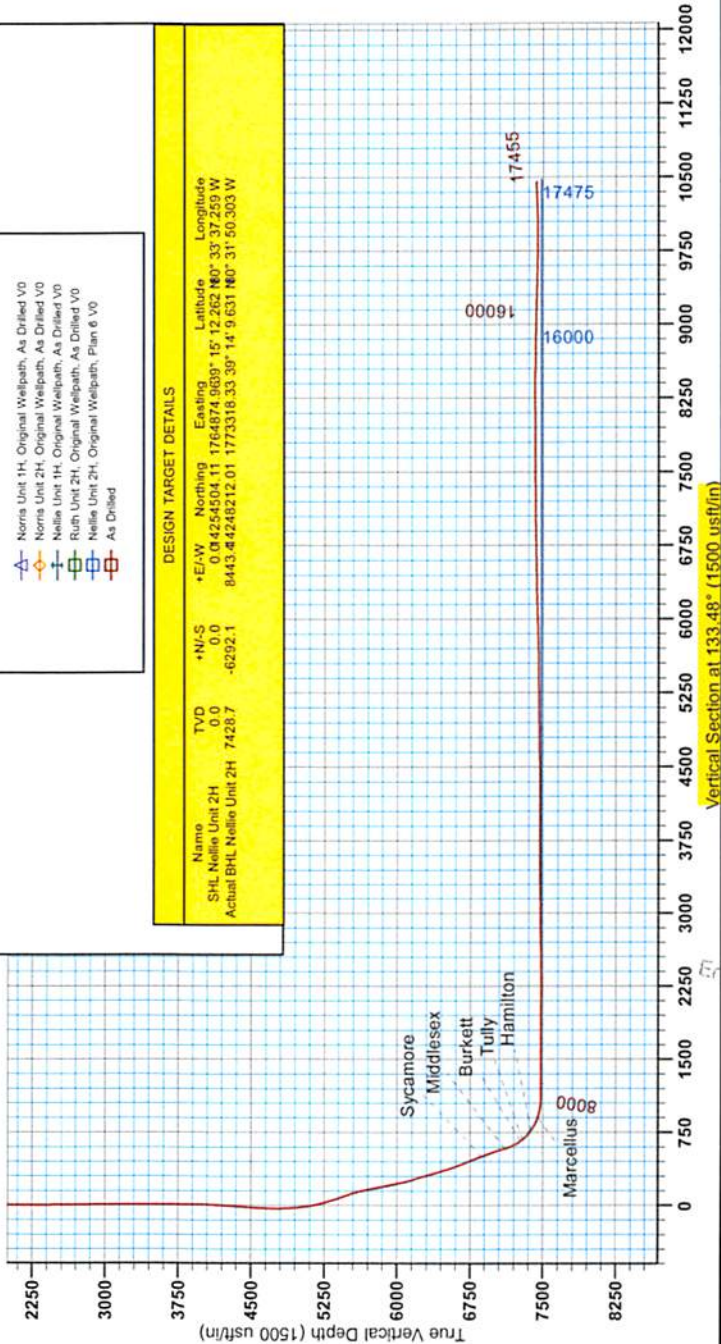
Genie Lightfoot
 Scientific Drilling
 421 South Eagle Lane
 Oklahoma City, Oklahoma
 405-787-3663

LEGEND

- Nellis Unit 1H, Original Wellpath, As Drilled V0
- Norris Unit 2H, Original Wellpath, As Drilled V0
- Nellis Unit 1H, Original Wellpath, As Drilled V0
- Ruth Unit 2H, Original Wellpath, As Drilled V0
- Nellis Unit 2H, Original Wellpath, Plan 6, V0
- As Drilled

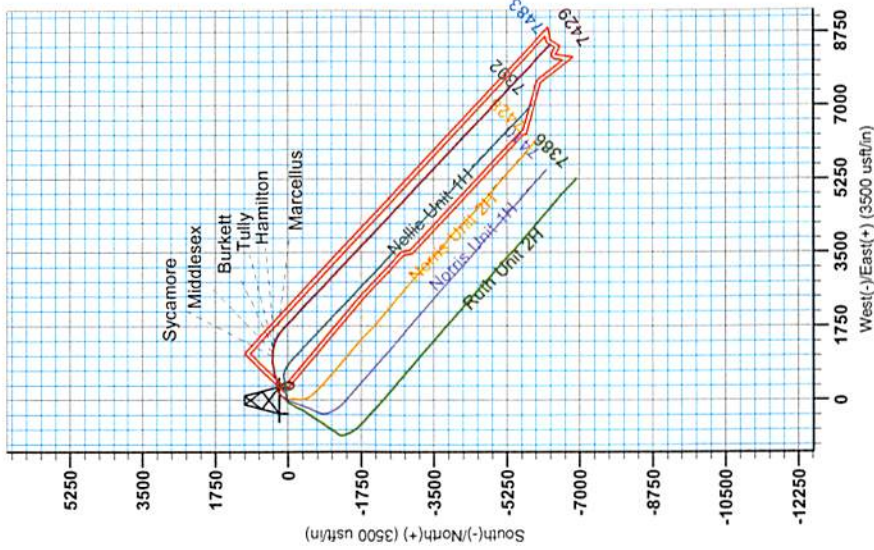
DESIGN TARGET DETAILS

Name	TVD	+N/-S	+E/W	Northing	Easting	Latitude	Longitude
SHL Nellie Unit 2H	0.0	0.0	0.0	0.0	0.0	0.0	0.0
Actual BHL Nellie Unit 2H	7428.7	-6292.1	8443.4	4248212.01	1773319.33	39° 14' 9.631" N	31° 50' 303.3" W



To convert Magnetic North to Grid, Subtract 8.67°
 To convert True North to Grid, Subtract 0.28°

Magnetic Field
 Strength: 52348.7 nT
 Dip Angle: 61.62°
 Year: 1993
 Model: IGRF2010



RECEIVED
 Office of Oil and Gas
 SEP 29 2017

WV Department of
 Environmental Protection



Company:	Antero Resources	Local Co-ordinate Reference:	Well Nellie Unit 2H
Project:	Harrison County West Virginia	TVD Reference:	Nellie Unit 2H GL 1376' + 24' RKB @ 1400.0usft
Site:	Ruth/Norris/Nellie/Ford Pad	MD Reference:	Nellie Unit 2H GL 1376' + 24' RKB @ 1400.0usft
Well:	Nellie Unit 2H	North Reference:	Grid
Wellbore:	Original Wellpath	Survey Calculation Method:	Minimum Curvature
Design:	As Drilled	Database:	Oklahoma District

Project	Harrison County West Virginia, Harrison County, USA		
Map System:	Universal Transverse Mercator (US Survey Feet)	System Datum:	Mean Sea Level
Geo Datum:	NAD 1927 (NADCON CONUS)		
Map Zone:	Zone 17N (84 W to 78 W)		

Site	Ruth/Norris/Nellie/Ford Pad				
Site Position:		Northing:	14,254,530.66 usft	Latitude:	39° 15' 12.526 N
From:	Map	Easting:	1,764,845.07 usft	Longitude:	80° 33' 37.638 W
Position Uncertainty:	2.0 usft	Slot Radius:	13-3/16"	Grid Convergence:	0.28 °

Well	Nellie Unit 2H, Marcellus					
Well Position	+N/-S	0.0 usft	Northing:	14,254,504.12 usft	Latitude:	39° 15' 12.262 N
	+E/-W	0.0 usft	Easting:	1,764,874.96 usft	Longitude:	80° 33' 37.259 W
Position Uncertainty	2.0 usft		Wellhead Elevation:	1,400.0 usft	Ground Level:	1,376.0 usft

Wellbore	Original Wellpath				
-----------------	-------------------	--	--	--	--

Magnetics	Model Name	Sample Date	Declination (°)	Dip Angle (°)	Field Strength (nT)
	IGRF2010	8/19/2013	-8.59	66.83	52,349

Design	As Drilled				
---------------	------------	--	--	--	--

Audit Notes:					
Version:	1.0	Phase:	ACTUAL	Tie On Depth:	0.0

Vertical Section:	Depth From (TVD) (usft)	+N/-S (usft)	+E/-W (usft)	Direction (°)
	0.0	0.0	0.0	133.48

RECEIVED
Office of Oil and Gas
SEP 29 2017
WV Department of Environmental Protection

Survey Program	Date 6/13/2014				
From (usft)	To (usft)	Survey (Wellbore)	Tool Name	Description	
100.0	7,087.0	Survey #6 Def Gyro To KOP (Original Wellbore)	SDI Standard Keeper	Scientific Drilling Intl. Standard Wireline Keeper	
7,200.0	17,455.0	Survey #7 MWD (Original Wellpath)	MWD SDI	MWD - Standard ver 1.0.1	

MD (usft)	Inc (°)	Azi (azimuth) (°)	TVD (usft)	N/S (usft)	E/W (usft)	V. Sec (usft)	DLeg (°/100usft)
0.0	0.00	0.00	0.0	0.0	0.0	0.0	0.00
100.0	0.09	347.92	100.0	0.1	0.0	-0.1	0.09
200.0	0.05	89.10	200.0	0.2	0.0	-0.1	0.11
300.0	0.05	131.40	300.0	0.1	0.1	0.0	0.04
400.0	0.13	148.48	400.0	0.0	0.2	0.1	0.08
500.0	0.10	118.20	500.0	-0.1	0.3	0.3	0.07
600.0	0.11	134.89	600.0	-0.2	0.5	0.5	0.03
700.0	0.13	174.85	700.0	-0.4	0.5	0.7	0.08
800.0	0.06	182.23	800.0	-0.6	0.5	0.8	0.07
900.0	0.09	209.30	900.0	-0.7	0.5	0.9	0.05
1,000.0	0.11	137.53	1,000.0	-0.9	0.5	1.0	0.12



Company:	Antero Resources	Local Co-ordinate Reference:	Well Nellie Unit 2H
Project:	Harrison County West Virginia	TVD Reference:	Nellie Unit 2H GL 1376' + 24' RKB @ 1400.0usft
Site:	Ruth/Norris/Nellie/Ford Pad	MD Reference:	Nellie Unit 2H GL 1376' + 24' RKB @ 1400.0usft
Well:	Nellie Unit 2H	North Reference:	Grid
Wellbore:	Original Wellpath	Survey Calculation Method:	Minimum Curvature
Design:	As Drilled	Database:	Oklahoma District

Survey								
MD (usft)	Inc (°)	Azi (azimuth) (°)	TVD (usft)	N/S (usft)	E/W (usft)	V. Sec (usft)	DLeg (°/100usft)	
1,100.0	0.15	145.29	1,100.0	-1.0	0.7	1.2	0.04	
1,200.0	0.13	152.65	1,200.0	-1.2	0.8	1.4	0.03	
1,300.0	0.15	165.42	1,300.0	-1.5	0.9	1.7	0.04	
1,400.0	0.15	155.67	1,400.0	-1.7	1.0	1.9	0.03	
1,500.0	0.18	163.89	1,500.0	-2.0	1.1	2.1	0.04	
1,600.0	0.20	153.80	1,600.0	-2.3	1.2	2.4	0.04	
1,700.0	0.10	155.51	1,700.0	-2.5	1.3	2.7	0.10	
1,800.0	0.13	188.17	1,800.0	-2.7	1.3	2.8	0.07	
1,900.0	0.25	173.47	1,900.0	-3.0	1.3	3.1	0.13	
2,000.0	0.20	192.31	2,000.0	-3.4	1.3	3.3	0.09	
2,100.0	0.24	170.41	2,100.0	-3.8	1.3	3.6	0.09	
2,200.0	0.10	174.12	2,200.0	-4.1	1.4	3.8	0.14	
2,300.0	0.32	173.29	2,300.0	-4.5	1.4	4.1	0.22	
2,400.0	0.09	149.17	2,400.0	-4.8	1.5	4.4	0.24	
2,500.0	0.15	139.35	2,500.0	-5.0	1.6	4.6	0.06	
2,600.0	0.26	101.13	2,600.0	-5.1	1.9	4.9	0.17	
2,700.0	0.61	85.42	2,700.0	-5.1	2.7	5.5	0.37	
2,800.0	0.45	83.06	2,800.0	-5.0	3.6	6.1	0.16	
2,900.0	0.38	97.52	2,900.0	-5.0	4.3	6.6	0.13	
3,000.0	0.58	88.24	3,000.0	-5.1	5.1	7.2	0.21	
3,100.0	0.39	111.13	3,100.0	-5.2	6.0	7.9	0.27	
3,200.0	0.16	119.87	3,200.0	-5.4	6.4	8.3	0.23	
3,300.0	0.29	102.94	3,300.0	-5.5	6.8	8.7	0.14	
3,400.0	0.22	141.48	3,400.0	-5.7	7.1	9.1	0.18	
3,500.0	0.22	141.84	3,500.0	-6.0	7.4	9.5	0.00	
3,600.0	0.14	174.38	3,600.0	-6.3	7.5	9.8	0.13	
3,700.0	0.13	142.69	3,700.0	-6.5	7.6	10.0	0.07	
3,800.0	0.20	104.65	3,800.0	-6.6	7.8	10.2	0.13	
3,900.0	0.18	76.57	3,900.0	-6.6	8.1	10.5	0.09	
4,000.0	2.95	8.98	3,999.9	-4.0	8.7	9.1	2.89	
4,100.0	6.35	12.26	4,099.6	3.9	10.3	4.8	3.41	
4,200.0	9.33	20.90	4,198.6	16.9	14.3	-1.2	3.20	
4,300.0	12.02	29.23	4,296.9	33.6	22.3	-6.9	3.09	
4,400.0	15.44	30.45	4,394.0	54.1	34.1	-12.5	3.43	
4,500.0	18.58	31.10	4,489.6	79.2	49.1	-18.9	3.15	
4,600.0	19.39	31.73	4,584.2	107.0	66.1	-25.7	0.84	
4,700.0	19.32	37.66	4,678.6	134.2	84.9	-30.7	1.97	
4,800.0	20.43	43.82	4,772.6	159.9	107.1	-32.3	2.37	
4,900.0	21.74	48.98	4,865.9	184.7	133.2	-30.4	2.27	
5,000.0	23.08	53.91	4,958.4	208.4	163.0	-25.1	2.31	
5,100.0	23.73	61.24	5,050.2	229.6	196.5	-15.4	2.98	
5,200.0	24.00	71.34	5,141.7	245.8	233.4	0.2	4.09	
5,300.0	25.95	78.37	5,232.3	256.7	274.1	22.3	3.55	
5,400.0	25.29	83.88	5,322.5	263.4	316.8	48.6	2.47	



Company:	Antero Resources	Local Co-ordinate Reference:	Well Nellie Unit 2H
Project:	Harrison County West Virginia	TVD Reference:	Nellie Unit 2H GL 1376' + 24' RKB @ 1400.0usft
Site:	Ruth/Norris/Nellie/Ford Pad	MD Reference:	Nellie Unit 2H GL 1376' + 24' RKB @ 1400.0usft
Well:	Nellie Unit 2H	North Reference:	Grid
Wellbore:	Original Wellpath	Survey Calculation Method:	Minimum Curvature
Design:	As Drilled	Database:	Oklahoma District

Survey

MD (usft)	Inc (°)	Azi (azimuth) (°)	TVD (usft)	N/S (usft)	E/W (usft)	V. Sec (usft)	DLeg (°/100usft)
5,500.0	23.99	89.27	5,413.4	265.9	358.4	77.0	2.59
5,600.0	24.17	93.67	5,504.7	264.9	399.1	107.3	1.80
5,700.0	22.47	85.41	5,596.6	265.1	438.6	135.8	3.68
5,800.0	21.88	74.52	5,689.2	271.6	475.6	158.2	4.15
5,900.0	20.73	72.57	5,782.4	281.9	510.5	176.4	1.35
6,000.0	22.58	71.82	5,875.3	293.2	545.6	194.2	1.87
6,100.0	22.59	73.02	5,967.6	304.8	582.2	212.8	0.46
6,200.0	23.90	75.53	6,059.5	315.5	620.2	233.0	1.64
6,300.0	26.16	81.79	6,150.1	323.7	661.7	257.4	3.48
6,400.0	28.18	81.50	6,239.1	330.3	706.8	285.6	2.02
6,500.0	28.13	76.49	6,327.3	339.3	753.1	313.0	2.36
6,600.0	28.10	74.92	6,415.5	350.9	798.8	338.1	0.74
6,700.0	28.20	77.20	6,503.7	362.3	844.6	363.5	1.08
6,800.0	28.54	84.18	6,591.7	370.0	891.4	392.2	3.33
6,900.0	28.48	91.31	6,679.6	371.8	939.0	425.5	3.40
7,000.0	26.48	95.36	6,768.3	369.2	985.0	460.7	2.74
7,087.0	26.70	94.00	6,846.1	366.0	1,023.8	491.0	0.74
7,120.0	26.41	92.88	6,875.6	365.1	1,038.6	502.3	1.75
Sycamore							
7,200.0	25.76	90.07	6,947.5	364.2	1,073.7	528.5	1.75
7,273.0	24.18	92.62	7,013.6	363.5	1,104.5	551.3	2.62
7,320.0	22.34	94.20	7,056.8	362.4	1,123.1	565.5	4.13
7,367.0	22.25	94.90	7,100.3	361.0	1,140.8	579.4	0.60
7,379.0	22.59	94.57	7,111.4	360.6	1,145.4	583.0	2.99
Middlesex							
7,414.0	23.57	93.67	7,143.6	359.7	1,159.1	593.6	2.99
7,444.0	27.35	94.73	7,170.7	358.7	1,171.9	603.5	12.69
7,474.0	30.60	97.28	7,196.9	357.2	1,186.4	615.1	11.59
7,504.0	33.68	98.16	7,222.3	355.0	1,202.2	628.0	10.38
7,534.0	37.46	99.21	7,246.7	352.4	1,219.4	642.4	12.76
7,564.0	39.57	102.64	7,270.2	348.8	1,237.8	658.1	10.01
7,567.0	39.80	102.90	7,272.5	348.4	1,239.6	659.8	9.32
Burkett							
7,594.0	41.86	105.10	7,292.9	344.1	1,256.8	675.1	9.32
7,596.0	42.07	105.34	7,294.4	343.8	1,258.0	676.3	13.27
Tully							
7,624.0	45.11	108.44	7,314.7	338.2	1,276.5	693.6	13.27
7,654.0	49.33	106.15	7,335.1	331.6	1,297.5	713.3	15.14
7,684.0	52.32	105.80	7,354.0	325.2	1,319.9	733.9	10.01
7,714.0	55.22	105.36	7,371.8	318.7	1,343.2	755.3	9.74
7,730.0	56.91	106.65	7,380.7	315.1	1,356.0	767.1	12.48
Hamilton							
7,744.0	58.39	107.74	7,388.2	311.6	1,367.3	777.7	12.48
7,774.0	62.17	109.76	7,403.0	303.2	1,391.9	801.4	13.89
7,804.0	64.81	112.48	7,416.4	293.5	1,416.9	826.2	11.97

RECEIVED
Office of Oil and Gas



EOW Completion Report



Company:	Antero Resources	Local Co-ordinate Reference:	Well Nellie Unit 2H
Project:	Harrison County West Virginia	TVD Reference:	Nellie Unit 2H GL 1376' + 24' RKB @ 1400.0usft
Site:	Ruth/Norris/Nellie/Ford Pad	MD Reference:	Nellie Unit 2H GL 1376' + 24' RKB @ 1400.0usft
Well:	Nellie Unit 2H	North Reference:	Grid
Wellbore:	Original Wellpath	Survey Calculation Method:	Minimum Curvature
Design:	As Drilled	Database:	Oklahoma District

Survey							
MD (usft)	Inc (°)	Azi (azimuth) (°)	TVD (usft)	N/S (usft)	E/W (usft)	V. Sec (usft)	DLeg (°/100usft)
7,834.0	67.01	112.66	7,428.7	283.0	1,442.2	851.8	7.35
7,864.0	70.08	115.21	7,439.7	271.7	1,467.7	878.1	12.93
7,888.0	71.83	118.88	7,447.5	261.4	1,487.9	899.8	16.18
Marcellus							
7,894.0	72.28	119.78	7,449.3	258.6	1,492.9	905.4	16.18
7,924.0	75.27	121.10	7,457.7	244.0	1,517.8	933.4	10.82
7,954.0	77.47	123.47	7,464.8	228.4	1,542.4	962.0	10.62
7,984.0	80.46	124.17	7,470.5	212.0	1,566.9	991.1	10.23
8,014.0	82.39	125.84	7,475.0	195.0	1,591.2	1,020.4	8.47
8,044.0	85.65	128.39	7,478.1	177.0	1,614.9	1,050.0	13.77
8,102.0	91.45	132.96	7,479.6	139.2	1,658.9	1,107.9	12.73
8,166.0	90.84	130.50	7,478.3	96.6	1,706.6	1,171.9	3.96
8,260.0	89.25	133.05	7,478.2	34.0	1,776.7	1,265.8	3.20
8,354.0	89.34	132.43	7,479.4	-29.8	1,845.8	1,359.8	0.67
8,448.0	89.60	133.58	7,480.3	-93.9	1,914.5	1,453.8	1.25
8,542.0	89.96	134.37	7,480.6	-159.2	1,982.1	1,547.8	0.92
8,636.0	89.87	133.31	7,480.8	-224.3	2,049.9	1,641.8	1.13
8,730.0	90.40	131.20	7,480.6	-287.5	2,119.5	1,735.7	2.31
8,824.0	90.22	131.82	7,480.0	-349.8	2,189.9	1,829.7	0.69
8,918.0	89.52	131.82	7,480.3	-412.4	2,260.0	1,923.7	0.74
9,012.0	89.78	133.23	7,480.8	-476.0	2,329.2	2,017.6	1.53
9,106.0	88.90	135.42	7,481.9	-541.6	2,396.5	2,111.6	2.51
9,200.0	88.46	135.16	7,484.1	-608.4	2,462.6	2,205.5	0.54
9,294.0	89.87	136.21	7,485.4	-675.7	2,528.2	2,299.5	1.87
9,388.0	91.80	138.15	7,484.1	-744.6	2,592.1	2,393.2	2.91
9,482.0	91.71	134.63	7,481.2	-812.6	2,656.9	2,487.1	3.74
9,576.0	91.01	132.52	7,479.0	-877.4	2,725.0	2,581.0	2.36
9,670.0	91.10	132.08	7,477.2	-940.7	2,794.5	2,675.0	0.48
9,764.0	91.10	131.20	7,475.4	-1,003.1	2,864.7	2,768.9	0.94
9,858.0	90.48	132.96	7,474.1	-1,066.1	2,934.5	2,862.9	1.98
9,952.0	89.60	131.82	7,474.1	-1,129.5	3,003.9	2,956.9	1.53
10,046.0	91.10	134.19	7,473.5	-1,193.6	3,072.6	3,050.9	2.98
10,140.0	91.63	132.79	7,471.3	-1,258.2	3,140.8	3,144.8	1.59
10,231.0	90.57	134.90	7,469.5	-1,321.3	3,206.4	3,235.8	2.59
10,321.0	90.57	134.37	7,468.6	-1,384.5	3,270.5	3,325.8	0.59
10,412.0	90.84	134.28	7,467.5	-1,448.1	3,335.6	3,416.8	0.31
10,503.0	90.57	133.40	7,466.4	-1,511.1	3,401.2	3,507.7	1.01
10,594.0	90.31	134.72	7,465.7	-1,574.4	3,466.6	3,598.7	1.48
10,684.0	90.31	134.37	7,465.2	-1,637.5	3,530.7	3,688.7	0.39
10,775.0	89.43	131.38	7,465.4	-1,699.4	3,597.4	3,779.7	3.43
10,866.0	89.69	131.20	7,466.1	-1,759.5	3,665.8	3,870.6	0.35
10,957.0	89.69	134.10	7,466.6	-1,821.1	3,732.7	3,961.6	3.19
11,048.0	89.78	136.13	7,467.0	-1,885.6	3,796.9	4,052.6	2.23
11,139.0	89.43	135.60	7,467.6	-1,950.9	3,860.3	4,143.5	0.70
11,230.0	90.04	135.25	7,468.1	-2,015.7	3,924.2	4,234.4	0.77



EOW Completion Report



Company:	Antero Resources	Local Co-ordinate Reference:	Well Nellie Unit 2H
Project:	Harrison County West Virginia	TVD Reference:	Nellie Unit 2H GL 1376' + 24' RKB @ 1400.0usft
Site:	Ruth/Norris/Nellie/Ford Pad	MD Reference:	Nellie Unit 2H GL 1376' + 24' RKB @ 1400.0usft
Well:	Nellie Unit 2H	North Reference:	Grid
Wellbore:	Original Wellpath	Survey Calculation Method:	Minimum Curvature
Design:	As Drilled	Database:	Oklahoma District

Survey							
MD (usft)	Inc (°)	Azi (azimuth) (°)	TVD (usft)	N/S (usft)	E/W (usft)	V. Sec (usft)	DLeg (%/100usft)
11,324.0	90.57	131.29	7,467.6	-2,080.1	3,992.6	4,328.4	4.25
11,418.0	90.92	130.41	7,466.3	-2,141.6	4,063.7	4,422.3	1.01
11,512.0	91.28	132.70	7,464.5	-2,203.9	4,134.0	4,516.2	2.47
11,606.0	91.01	134.54	7,462.7	-2,268.8	4,202.0	4,610.2	1.98
11,698.0	91.01	133.58	7,461.0	-2,332.7	4,268.1	4,702.2	1.04
11,791.0	90.40	132.50	7,459.9	-2,396.2	4,336.1	4,795.2	1.33
11,885.0	90.92	133.49	7,458.8	-2,460.3	4,404.9	4,889.2	1.19
11,980.0	91.10	133.49	7,457.1	-2,525.7	4,473.8	4,984.1	0.19
12,074.0	89.96	134.02	7,456.3	-2,590.7	4,541.7	5,078.1	1.34
12,168.0	90.22	134.98	7,456.1	-2,656.6	4,608.7	5,172.1	1.06
12,262.0	90.40	135.07	7,455.6	-2,723.1	4,675.1	5,266.1	0.21
12,356.0	90.84	134.98	7,454.6	-2,789.5	4,741.6	5,360.1	0.48
12,450.0	90.92	130.32	7,453.1	-2,853.2	4,810.7	5,454.0	4.96
12,543.0	90.84	129.45	7,451.7	-2,912.8	4,882.0	5,546.8	0.94
12,637.0	90.75	130.32	7,450.4	-2,973.1	4,954.2	5,640.6	0.93
12,731.0	90.40	134.19	7,449.5	-3,036.3	5,023.7	5,734.6	4.13
12,825.0	89.34	135.86	7,449.7	-3,102.8	5,090.2	5,828.5	2.10
12,919.0	91.98	135.69	7,448.6	-3,170.1	5,155.7	5,922.4	2.81
13,013.0	92.59	136.30	7,444.8	-3,237.7	5,221.0	6,016.3	0.92
13,107.0	92.15	133.40	7,441.0	-3,303.9	5,287.5	6,110.2	3.12
13,201.0	91.98	132.43	7,437.6	-3,367.9	5,356.3	6,204.1	1.05
13,295.0	91.63	131.82	7,434.6	-3,430.9	5,426.0	6,298.0	0.75
13,388.0	90.48	132.61	7,432.9	-3,493.4	5,494.9	6,391.0	1.50
13,482.0	91.45	133.93	7,431.3	-3,557.8	5,563.3	6,485.0	1.74
13,576.0	91.19	132.87	7,429.1	-3,622.4	5,631.6	6,578.9	1.16
13,670.0	90.48	132.35	7,427.8	-3,686.0	5,700.8	6,672.9	0.94
13,764.0	91.54	133.75	7,426.1	-3,750.2	5,769.4	6,766.9	1.87
13,858.0	91.45	133.23	7,423.7	-3,814.8	5,837.6	6,860.9	0.56
13,953.0	90.48	134.37	7,422.1	-3,880.6	5,906.2	6,955.8	1.58
14,047.0	90.75	134.19	7,421.1	-3,946.2	5,973.5	7,049.8	0.35
14,141.0	91.01	132.52	7,419.6	-4,010.7	6,041.8	7,143.8	1.80
14,235.0	89.69	133.84	7,419.0	-4,075.0	6,110.3	7,237.8	1.99
14,329.0	90.13	133.66	7,419.2	-4,140.0	6,178.2	7,331.8	0.51
14,423.0	90.40	134.10	7,418.8	-4,205.2	6,246.0	7,425.8	0.55
14,517.0	90.48	133.49	7,418.0	-4,270.3	6,313.9	7,519.8	0.65
14,612.0	90.75	133.93	7,417.0	-4,335.9	6,382.5	7,614.8	0.54
14,705.0	88.81	133.84	7,417.4	-4,400.4	6,449.5	7,707.8	2.09
14,799.0	90.04	134.46	7,418.3	-4,465.8	6,517.0	7,801.8	1.47
14,893.0	90.57	135.25	7,417.8	-4,532.1	6,583.6	7,895.7	1.01
14,987.0	89.87	133.58	7,417.5	-4,597.9	6,650.8	7,989.7	1.93
15,081.0	90.57	132.70	7,417.1	-4,662.2	6,719.3	8,083.7	1.20
15,175.0	90.75	131.56	7,416.0	-4,725.2	6,789.1	8,177.7	1.23
15,269.0	90.31	133.23	7,415.1	-4,788.6	6,858.5	8,271.7	1.84
15,364.0	91.28	134.24	7,413.8	-4,854.3	6,927.1	8,366.6	1.47

RECEIVED
Office of Oil and Gas



Company:	Antero Resources	Local Co-ordinate Reference:	Well Nellie Unit 2H
Project:	Harrison County West Virginia	TVD Reference:	Nellie Unit 2H GL 1376' + 24' RKB @ 1400.0usft
Site:	Ruth/Norris/Nellie/Ford Pad	MD Reference:	Nellie Unit 2H GL 1376' + 24' RKB @ 1400.0usft
Well:	Nellie Unit 2H	North Reference:	Grid
Wellbore:	Original Wellpath	Survey Calculation Method:	Minimum Curvature
Design:	As Drilled	Database:	Oklahoma District

MD (usft)	Inc (°)	Azi (azimuth) (°)	TVD (usft)	N/S (usft)	E/W (usft)	V. Sec (usft)	DLeg (°/100usft)
15,456.0	87.28	130.82	7,415.0	-4,916.4	6,994.9	8,458.6	5.72
15,551.0	88.56	131.93	7,418.4	-4,979.2	7,066.1	8,553.5	1.78
15,644.0	88.49	133.57	7,420.8	-5,042.3	7,134.4	8,646.4	1.76
15,738.0	89.87	133.66	7,422.2	-5,107.1	7,202.4	8,740.4	1.47
15,832.0	89.96	131.99	7,422.3	-5,171.0	7,271.4	8,834.4	1.78
15,926.0	88.69	130.75	7,423.4	-5,233.2	7,341.9	8,928.3	1.89
16,020.0	88.42	131.68	7,425.8	-5,295.1	7,412.6	9,022.2	1.03
16,114.0	88.25	134.82	7,428.5	-5,359.4	7,481.0	9,116.2	3.34
16,208.0	87.79	134.94	7,431.8	-5,425.7	7,547.6	9,210.1	0.51
16,303.0	88.29	135.51	7,435.0	-5,493.1	7,614.5	9,305.0	0.80
16,396.0	88.81	134.63	7,437.4	-5,558.9	7,680.1	9,397.9	1.10
16,490.0	89.09	132.97	7,439.1	-5,624.0	7,747.9	9,491.9	1.79
16,585.0	89.70	133.65	7,440.1	-5,689.2	7,817.1	9,586.9	0.96
16,678.0	90.03	133.63	7,440.3	-5,753.3	7,884.4	9,679.9	0.36
16,772.0	88.99	133.70	7,441.1	-5,818.2	7,952.4	9,773.9	1.11
16,866.0	89.09	133.79	7,442.7	-5,883.2	8,020.3	9,867.9	0.14
16,960.0	90.44	133.75	7,443.1	-5,948.2	8,088.1	9,961.9	1.44
17,053.0	90.60	133.43	7,442.2	-6,012.4	8,155.5	10,054.9	0.38
17,147.0	91.24	132.77	7,440.7	-6,076.6	8,224.1	10,148.8	0.98
17,241.0	91.68	132.96	7,438.3	-6,140.5	8,293.0	10,242.8	0.51
17,336.0	93.02	134.01	7,434.4	-6,205.8	8,361.9	10,337.7	1.79
17,397.0	93.09	134.48	7,431.2	-6,248.3	8,405.5	10,398.6	0.78
17,455.0	91.85	143.80	7,428.7	-6,292.1	8,443.4	10,456.2	16.20

Measured Depth (usft)	Vertical Depth (usft)	Local Coordinates		Comment
		+N/-S (usft)	+E/-W (usft)	
7,120.0	6,875.6	365.1	1,038.6	Sycamore
7,379.0	7,111.4	360.6	1,145.4	Middlesex
7,567.0	7,272.5	348.4	1,239.6	Burkett
7,596.0	7,294.4	343.8	1,258.0	Tully
7,730.0	7,380.7	315.1	1,356.0	Hamilton
7,888.0	7,447.5	261.4	1,487.9	Marcellus

Checked By: _____ Approved By: _____ Date: _____

RECEIVED
Office of Oil and Gas

SEP 29 2017