



Antero Resources
 Bennett Unit 1H
 Harrison County West Virginia
 Northing: 14236499.35
 Easting: 1789262.48
 As Drilled



Genie Lightfoot
 10:56, August 26 2013
 Scientific Drilling
 421 South Eagle Lane
 Oklahoma City, OK

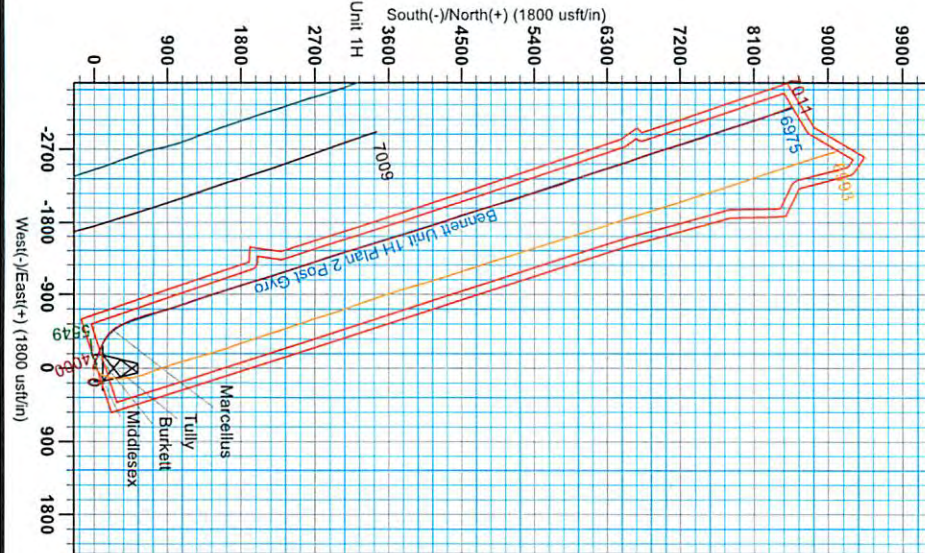
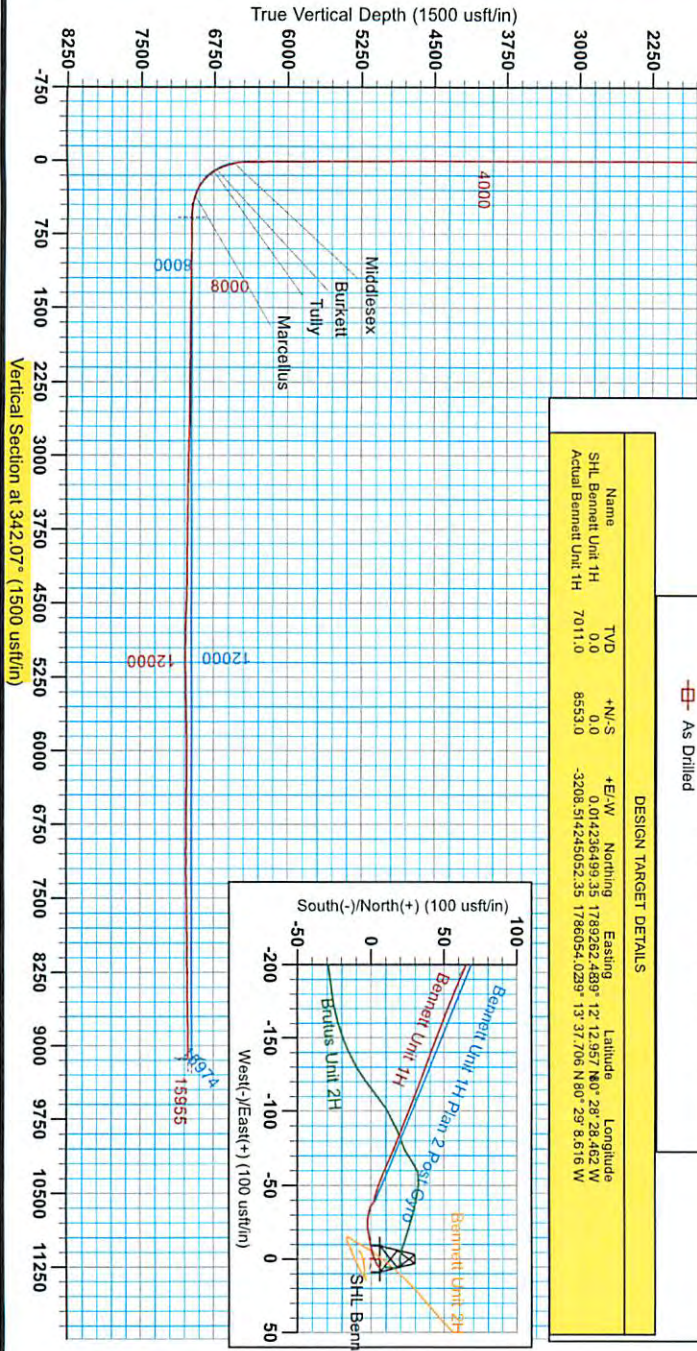
WELL DETAILS: Bennett Unit 1H

Ground Level:	1235.0
N-S	0.0
E-W	0.0
Northing	14236499.35
Easting	1789262.48
Latitude	12° 12.957' N 80° 29' 28.462" W
Longitude	
Spot	

- LEGEND**
- ▣ Bennett Unit 2H, Original Wellpath, As Drilled V0
 - ▣ Brutus Unit 2H, Original Wellpath, As Drilled V0
 - ▣ Bennett Unit 1H, Original Wellpath, Plan 2 Post Gyro V0
 - ▣ Ira Unit 2H, Original Wellpath, As Drilled V0
 - ▣ Brutus Unit 1H, Original Wellpath, As Drilled V0
 - ▣ As Drilled

DESIGN TARGET DETAILS

Name	TVD	+N/-S	+E/-W	Northing	Easting	Latitude	Longitude
SHL Bennett Unit 1H	0.0	0.0	0.0	0.014226499.35	1789262.48	12° 12.957' N 80° 29' 28.462" W	
Actual Bennett Unit 1H	7011.0	8553.0	-3208.5	14245052.35	1786054.02	13° 37' 706" N 80° 29' 8.616" W	



RECEIVED
 Office of Oil and Gas
 5/10/2015
 Admitts to Grid
 Magnetic North: -8.96°
 Magnetic Field
 Strength: 52356.45nT
 Dip Angle: 66.80°
 Date: 07/14/2013
 Model: IGRN2010

WV Department of
 Environmental Protection

06/05/2015



Antero Resources

Harrison County West Virginia
Bennett/Brutus Pad
Bennett Unit 1H
Original Wellpath

Design: As Drilled

EOW Completion Report

26 August, 2013

RECEIVED
Office of Oil and Gas

MAY 26 2015

WV Department of
Environmental Protection



Scientific Drilling

06/05/2015



EOW Completion Report



Company:	Antero Resources	Local Co-ordinate Reference:	Well Bennett Unit 1H
Project:	Harrison County West Virginia	TVD Reference:	Bennett 1H 1235 GL + 28 KB @ 1263.0usft
Site:	Bennett/Brutus Pad	MD Reference:	Bennett 1H 1235 GL + 28 KB @ 1263.0usft
Well:	Bennett Unit 1H	North Reference:	Grid
Wellbore:	Original Wellpath	Survey Calculation Method:	Minimum Curvature
Design:	As Drilled	Database:	Oklahoma District

Project	Harrison County West Virginia, Harrison County, USA		
Map System:	Universal Transverse Mercator (US Survey Fee	System Datum:	Mean Sea Level
Geo Datum:	NAD 1927 (NADCON CONUS)		
Map Zone:	Zone 17N (84 W to 78 W)		

Site	Bennett/Brutus Pad				
Site Position:	Northing:	14,236,491.11 usft	Latitude:	39° 12' 12.876 N	
From: Map	Easting:	1,789,256.82 usft	Longitude:	80° 28' 28.534 W	
Position Uncertainty:	0.0 usft	Slot Radius:	13-3/16"	Grid Convergence:	0.33 °

Well	Bennett Unit 1H, Marcellus					
Well Position	+N/-S	0.0 usft	Northing:	14,236,499.35 usft	Latitude:	39° 12' 12.957 N
	+E/-W	0.0 usft	Easting:	1,789,262.48 usft	Longitude:	80° 28' 28.462 W
Position Uncertainty	2.0 usft	Wellhead Elevation:	1,263.0 usft	Ground Level:	1,235.0 usft	

Wellbore	Original Wellpath
-----------------	-------------------

Magnetics	Model Name	Sample Date	Declination (°)	Dip Angle (°)	Field Strength (nT)
	IGRF2010	6/14/2013	-8.63	66.80	52,336

Design	As Drilled
---------------	------------

Audit Notes:	
Version:	1.0
Phase:	ACTUAL
Tie On Depth:	0.0

Vertical Section:	Depth From (TVD) (usft)	+N/-S (usft)	+E/-W (usft)	Direction
	0.0	0.0	0.0	342.07

Survey Program	Date	8/26/2013		
From (usft)	To (usft)	Survey (Wellbore)	Tool Name	Description
115.0	6,390.1	Survey #3 Def Gyro to KOP (Original Well	SDI Standard Keeper	Scientific Drilling Intl. Standard Wireline Keeper
6,415.0	15,955.0	Survey #4 MWD (Original Wellpath)	SDI MWD	Scientific Drilling Intl. MWD - Standard ver 1.0.1

MD (usft)	Inc (°)	Azi (azimuth) (°)	TVD (usft)	N/S (usft)	E/W (usft)	V. Sec (usft)	DLeg (°/100usft)
0.0	0.00	0.00	0.0	0.0	0.0	0.0	0.00
115.0	0.16	288.55	115.0	0.1	-0.2	0.1	0.14
215.0	0.12	257.54	215.0	0.1	-0.4	0.2	0.08
315.0	0.08	180.95	315.0	0.0	-0.5	0.1	0.13
415.0	0.19	18.92	415.0	0.1	-0.4	0.2	0.27
515.0	0.21	13.15	515.0	0.4	-0.3	0.5	0.03
615.0	0.07	88.71	615.0	0.6	-0.2	0.6	0.20
715.0	0.24	25.90	715.0	0.8	-0.1	0.8	0.22
815.0	0.26	352.49	815.0	1.2	0.0	1.1	0.14
915.0	0.24	357.17	915.0	1.6	-0.1	1.6	0.03
1,015.0	0.17	60.12	1,015.0	1.9	0.1	1.8	0.22

RECEIVED
 Office of Oil and Gas
 MAY 26 2015
 WV Department of
 Environmental Protection



WV Department of
Environmental Protection

Company: Antero Resources
Project: Harrison County West Virginia
Site: Bennett/Brutus Pad
Well: Bennett Unit 1H
Wellbore: Original Wellpath
Design: As Drilled

Local Co-ordinate Reference: Well Bennett Unit 1H
TVD Reference: Bennett 1H 1235 GL + 28 KB @ 1263.0usft
MD Reference: Bennett 1H 1235 GL + 28 KB @ 1263.0usft
North Reference: Grid
Survey Calculation Method: Minimum Curvature
Database: Oklahoma District

Survey

MD (usft)	Inc (°)	Azi (azimuth) (°)	TVD (usft)	N/S (usft)	E/W (usft)	V. Sec (usft)	DLeg (°/100usft)
1,115.0	0.29	323.95	1,115.0	2.2	0.0	2.1	0.35
1,215.0	0.20	25.62	1,215.0	2.5	0.0	2.4	0.26
1,315.0	0.17	38.82	1,315.0	2.8	0.1	2.6	0.05
1,415.0	0.27	20.36	1,415.0	3.2	0.3	2.9	0.12
1,515.0	0.29	356.31	1,515.0	3.6	0.4	3.3	0.12
1,615.0	0.29	308.94	1,615.0	4.0	0.2	3.8	0.23
1,715.0	0.24	356.74	1,715.0	4.4	-0.1	4.2	0.22
1,815.0	0.23	3.35	1,815.0	4.8	-0.1	4.6	0.03
1,915.0	0.05	72.07	1,915.0	5.0	0.0	4.8	0.22
2,015.0	0.08	320.80	2,015.0	5.1	0.0	4.9	0.11
2,115.0	0.18	75.83	2,115.0	5.2	0.1	4.9	0.23
2,215.0	0.16	330.70	2,215.0	5.3	0.2	5.0	0.27
2,315.0	0.16	355.64	2,315.0	5.6	0.1	5.3	0.07
2,415.0	0.24	65.21	2,415.0	5.8	0.3	5.5	0.24
2,515.0	0.12	26.75	2,515.0	6.0	0.5	5.6	0.16
2,615.0	0.31	66.48	2,615.0	6.2	0.8	5.7	0.23
2,715.0	0.30	74.85	2,715.0	6.4	1.3	5.7	0.05
2,815.0	0.50	83.03	2,815.0	6.5	2.0	5.6	0.21
2,915.0	0.45	80.31	2,915.0	6.6	2.8	5.4	0.05
3,015.0	0.34	101.81	3,015.0	6.6	3.5	5.2	0.18
3,115.0	0.40	72.09	3,115.0	6.7	4.1	5.1	0.20
3,215.0	0.40	133.51	3,215.0	6.6	4.7	4.8	0.41
3,315.0	0.29	144.04	3,315.0	6.1	5.1	4.2	0.13
3,415.0	0.29	130.47	3,415.0	5.7	5.5	3.8	0.07
3,515.0	0.07	242.44	3,515.0	5.5	5.6	3.6	0.32
3,615.0	0.28	218.93	3,615.0	5.3	5.4	3.4	0.22
3,715.0	0.25	232.95	3,715.0	5.0	5.1	3.2	0.07
3,815.0	0.65	229.09	3,815.0	4.5	4.5	2.9	0.40
3,915.0	0.89	243.33	3,915.0	3.8	3.3	2.6	0.31
4,015.0	0.82	247.82	4,014.9	3.2	2.0	2.4	0.10
4,115.0	1.19	249.23	4,114.9	2.5	0.3	2.3	0.37
4,215.0	1.26	252.13	4,214.9	1.8	-1.7	2.3	0.09
4,315.0	1.28	256.56	4,314.9	1.2	-3.8	2.3	0.10
4,415.0	1.34	255.51	4,414.9	0.7	-6.0	2.5	0.06
4,515.0	1.33	260.58	4,514.8	0.2	-8.3	2.7	0.12
4,615.0	1.32	254.17	4,614.8	-0.3	-10.6	3.0	0.15
4,715.0	1.34	259.07	4,714.8	-0.8	-12.8	3.1	0.12
4,815.0	1.40	260.07	4,814.7	-1.3	-15.2	3.4	0.06
4,915.0	1.24	260.90	4,914.7	-1.7	-17.4	3.8	0.16
5,015.0	1.43	265.13	5,014.7	-1.9	-19.7	4.2	0.21
5,115.0	1.12	265.99	5,114.7	-2.1	-22.0	4.8	0.31
5,215.0	1.25	270.98	5,214.6	-2.2	-24.0	5.3	0.17
5,315.0	1.18	269.95	5,314.6	-2.1	-26.1	6.0	0.07
5,415.0	1.17	279.46	5,414.6	-2.0	-28.2	6.8	0.20



EOW Completion Report

RECEIVED
Office of Oil and Gas
Scientific Drilling
MAY 26 2015
Environmental Protection

Company:	Antero Resources	Local Co-ordinate Reference:	Well Bennett Unit 1H
Project:	Harrison County West Virginia	TVD Reference:	Bennett 1H 4235 GL + 28 RB @ 1263.0usft
Site:	Bennett/Brutus Pad	MD Reference:	Bennett 1H 4235 GL + 28 RB @ 1263.0usft
Well:	Bennett Unit 1H	North Reference:	Grid
Wellbore:	Original Wellpath	Survey Calculation Method:	Minimum Curvature
Design:	As Drilled	Database:	Oklahoma District

Survey

MD (usft)	Inc (°)	Azi (azimuth) (°)	TVD (usft)	N/S (usft)	E/W (usft)	V. Sec (usft)	DLeg (°/100usft)
5,515.0	1.13	282.76	5,514.6	-1.6	-30.2	7.8	0.08
5,615.0	0.79	283.98	5,614.6	-1.2	-31.8	8.6	0.34
5,715.0	0.81	282.33	5,714.6	-0.9	-33.1	9.4	0.03
5,815.0	0.74	278.51	5,814.5	-0.6	-34.5	10.0	0.09
5,915.0	0.63	299.57	5,914.5	-0.3	-35.6	10.7	0.27
6,015.0	0.24	319.00	6,014.5	0.2	-36.2	11.3	0.41
6,115.0	0.35	300.81	6,114.5	0.5	-36.6	11.7	0.14
6,215.0	0.42	304.38	6,214.5	0.8	-37.2	12.2	0.07
6,315.0	0.42	325.70	6,314.5	1.3	-37.7	12.9	0.16
6,390.1	0.39	342.16	6,389.6	1.8	-37.9	13.4	0.16
6,415.0	2.22	287.13	6,414.5	2.0	-38.4	13.8	8.11
6,446.0	7.10	280.69	6,445.4	2.6	-40.9	15.0	15.81
6,478.0	12.09	287.79	6,477.0	4.0	-46.0	17.9	16.00
6,509.0	15.30	291.65	6,507.1	6.5	-52.9	22.4	10.76
6,541.0	18.29	292.88	6,537.7	10.0	-61.4	28.4	9.41
6,548.0	18.85	293.07	6,544.3	10.8	-63.5	29.9	8.01
Middlesex							
6,573.0	20.84	293.67	6,567.9	14.2	-71.3	35.5	8.01
6,604.0	23.21	292.97	6,596.6	18.8	-82.0	43.1	7.69
6,636.0	26.82	291.74	6,625.6	23.9	-94.5	51.9	11.40
6,667.0	30.86	290.77	6,652.7	29.4	-108.4	61.3	13.12
6,699.0	34.65	290.59	6,679.6	35.5	-124.6	72.1	11.85
6,731.0	38.25	290.42	6,705.4	42.1	-142.4	83.9	11.25
6,754.0	41.25	290.88	6,723.1	47.3	-156.2	93.1	13.13
Burkett							
6,762.0	42.30	291.03	6,729.0	49.2	-161.1	96.4	13.13
6,794.0	45.64	292.61	6,752.0	57.5	-181.8	110.6	10.99
Tully							
6,826.0	49.68	292.88	6,773.6	66.6	-203.6	126.1	12.64
6,858.0	53.20	291.82	6,793.5	76.1	-226.7	142.2	11.30
6,889.0	55.31	292.97	6,811.7	85.7	-250.0	158.5	7.44
6,921.0	56.79	295.40	6,829.5	96.6	-274.2	176.3	7.81
6,953.0	58.48	296.92	6,846.7	108.5	-298.4	195.1	6.63
6,984.0	59.88	298.06	6,862.5	120.8	-322.1	214.1	5.51
7,015.0	61.38	299.16	6,877.7	133.7	-345.8	233.7	5.74
7,047.0	63.12	301.79	6,892.6	148.1	-370.2	254.9	9.08
7,079.0	66.00	306.14	6,906.4	164.3	-394.1	277.6	15.22
7,110.0	69.83	310.68	6,918.0	182.1	-416.6	301.5	18.35
7,141.0	73.59	314.60	6,927.8	202.0	-438.2	327.2	17.06
7,173.0	74.22	319.99	6,936.7	224.6	-459.1	355.1	16.30
7,184.0	73.95	321.82	6,939.7	232.8	-465.8	364.9	16.22
Marcellus							
7,205.0	73.49	325.34	6,945.6	249.1	-477.7	384.0	16.22
7,237.0	74.89	330.50	6,954.3	275.1	-494.1	413.9	16.12
7,269.0	79.59	332.83	6,961.4	302.6	-508.9	444.6	16.31



EOW Completion Report

Company: Antero Resources
Project: Harrison County West Virginia
Site: Bennett/Brutus Pad
Well: Bennett Unit 1H
Wellbore: Original Wellpath
Design: As Drilled

Local Co-ordinate Reference: Well Bennett Unit 1H
TVD Reference: Bennett 1H 1235 GL + 28 KB @ 1263.0usft
MD Reference: Bennett 1H 1235 GL + 28 KB @ 1263.0usft
North Reference: Grid
Survey Calculation Method: Minimum Curvature
Database: Oklahoma District

Survey

MD (usft)	Inc (°)	Azi (azimuth) (°)	TVD (usft)	N/S (usft)	E/W (usft)	V. Sec (usft)	DLeg (°/100usft)
7,377.0	88.11	334.27	6,972.9	398.7	-556.6	550.7	8.00
7,472.0	89.60	339.99	6,974.8	486.1	-593.5	645.2	6.22
7,567.0	89.96	343.15	6,975.2	576.2	-623.6	740.2	3.35
7,661.0	88.90	344.47	6,976.1	666.5	-649.8	834.2	1.80
7,756.0	90.31	345.17	6,976.8	758.2	-674.6	929.1	1.66
7,851.0	88.37	343.33	6,977.9	849.6	-700.4	1,024.0	2.81
7,946.0	89.69	344.12	6,979.5	940.8	-727.0	1,118.9	1.62
8,041.0	88.99	341.39	6,980.6	1,031.5	-755.2	1,213.9	2.97
8,134.0	90.04	341.39	6,981.3	1,119.6	-784.9	1,306.9	1.13
8,230.0	88.20	341.57	6,982.8	1,210.7	-815.4	1,402.9	1.93
8,325.0	89.16	341.39	6,985.0	1,300.7	-845.5	1,497.8	1.03
8,420.0	88.99	340.83	6,986.5	1,390.6	-876.3	1,592.8	0.62
8,515.0	90.48	343.15	6,987.0	1,480.9	-905.7	1,687.8	2.90
8,611.0	88.81	342.71	6,987.6	1,572.7	-933.8	1,783.8	1.80
8,706.0	89.16	342.27	6,989.3	1,663.3	-962.4	1,878.8	0.59
8,800.0	89.69	342.54	6,990.2	1,752.9	-990.8	1,972.8	0.63
8,895.0	90.48	341.92	6,990.1	1,843.3	-1,019.8	2,067.8	1.06
8,989.0	89.08	343.15	6,990.4	1,933.0	-1,048.0	2,161.8	1.98
9,084.0	89.69	342.89	6,991.4	2,023.8	-1,075.8	2,256.7	0.70
9,178.0	90.31	342.80	6,991.4	2,113.7	-1,103.5	2,350.7	0.67
9,272.0	88.90	341.92	6,992.1	2,203.2	-1,132.0	2,444.7	1.77
9,367.0	89.43	341.22	6,993.5	2,293.3	-1,162.0	2,539.7	0.92
9,462.0	90.13	340.78	6,993.8	2,383.2	-1,192.9	2,634.7	0.87
9,557.0	88.29	342.01	6,995.2	2,473.2	-1,223.2	2,729.7	2.33
9,647.0	88.02	341.75	6,998.1	2,558.7	-1,251.2	2,819.6	0.42
9,740.0	88.64	341.57	7,000.8	2,646.9	-1,280.5	2,912.6	0.69
9,831.0	89.43	340.95	7,002.3	2,733.1	-1,309.7	3,003.5	1.10
9,922.0	89.87	340.78	7,002.8	2,819.1	-1,339.5	3,094.5	0.52
10,013.0	88.64	342.89	7,004.0	2,905.5	-1,367.9	3,185.5	2.68
10,104.0	88.81	342.80	7,006.1	2,992.4	-1,394.7	3,276.5	0.21
10,194.0	89.69	343.24	7,007.2	3,078.5	-1,421.0	3,366.5	1.09
10,286.0	88.29	342.80	7,008.9	3,166.5	-1,447.9	3,458.4	1.60
10,376.0	88.90	342.62	7,011.1	3,252.4	-1,474.6	3,548.4	0.71
10,466.0	89.34	342.89	7,012.4	3,338.3	-1,501.3	3,638.4	0.57
10,557.0	89.25	342.54	7,013.6	3,425.2	-1,528.3	3,729.4	0.40
10,648.0	89.34	342.62	7,014.7	3,512.0	-1,555.6	3,820.4	0.13
10,743.0	89.25	342.01	7,015.9	3,602.5	-1,584.4	3,915.3	0.65
10,840.0	89.60	341.31	7,016.8	3,694.6	-1,615.0	4,012.3	0.81
10,935.0	89.78	341.66	7,017.3	3,784.7	-1,645.1	4,107.3	0.41
11,030.0	88.29	342.27	7,018.9	3,875.0	-1,674.5	4,202.3	1.69
11,126.0	89.25	342.18	7,021.0	3,966.4	-1,703.8	4,298.3	1.00
11,222.0	89.26	341.71	7,022.3	4,057.7	-1,733.6	4,394.3	0.49
11,316.0	90.92	342.54	7,022.1	4,147.1	-1,762.4	4,488.3	1.97
11,412.0	86.61	340.34	7,024.2	4,238.1	-1,793.0	4,584.2	5.04



EOW Completion Report

WV Department of
Environmental Protection

Company: Antero Resources
Project: Harrison County West Virginia
Site: Bennett/Brutus Pad
Well: Bennett Unit 1H
Wellbore: Original Wellpath
Design: As Drilled

Local Co-ordinate Reference: Well, Bennett Unit 1H
TVD Reference: Bennett 1H 1235 GL + 28 KB @ 1263.0usft
MD Reference: Bennett 1H 1235 GL + 28 KB @ 1263.0usft
North Reference: Grid
Survey Calculation Method: Minimum Curvature
Database: Oklahoma District

Survey

MD (usft)	Inc (°)	Azi (azimuth) (°)	TVD (usft)	N/S (usft)	E/W (usft)	V. Sec (usft)	DLeg (°/100usft)
11,506.0	87.93	340.25	7,028.6	4,326.5	-1,824.6	4,678.1	1.41
11,600.0	87.76	339.90	7,032.2	4,414.8	-1,856.6	4,771.9	0.41
11,695.0	90.04	342.10	7,034.0	4,504.6	-1,887.6	4,866.9	3.33
11,789.0	89.52	341.48	7,034.4	4,593.9	-1,916.9	4,960.9	0.86
11,883.0	90.40	343.33	7,034.4	4,683.5	-1,945.3	5,054.9	2.18
11,977.0	90.84	343.33	7,033.4	4,773.5	-1,972.3	5,148.9	0.47
12,072.0	90.04	341.83	7,032.7	4,864.1	-2,000.7	5,243.9	1.79
12,166.0	91.10	344.29	7,031.8	4,954.1	-2,028.1	5,337.8	2.85
12,260.0	91.89	345.00	7,029.3	5,044.7	-2,053.0	5,431.7	1.13
12,354.0	90.22	342.27	7,027.6	5,134.8	-2,079.5	5,525.6	3.40
12,448.0	90.66	341.83	7,026.8	5,224.3	-2,108.5	5,619.6	0.66
12,542.0	91.63	341.83	7,025.0	5,313.5	-2,137.8	5,713.6	1.03
12,637.0	91.54	340.87	7,022.3	5,403.5	-2,168.1	5,808.6	1.01
12,732.0	89.87	343.68	7,021.2	5,494.0	-2,197.0	5,903.5	3.44
12,826.0	90.50	344.12	7,020.9	5,584.3	-2,223.1	5,997.5	0.82
12,920.0	88.90	341.31	7,021.4	5,674.1	-2,251.0	6,091.5	3.44
13,014.0	89.87	341.39	7,022.4	5,763.1	-2,281.1	6,185.5	1.04
13,108.0	89.60	340.08	7,022.8	5,851.8	-2,312.1	6,279.4	1.42
13,202.0	88.64	340.78	7,024.2	5,940.4	-2,343.6	6,373.4	1.26
13,297.0	90.66	341.75	7,024.8	6,030.4	-2,374.1	6,468.4	2.36
13,392.0	90.92	341.22	7,023.5	6,120.4	-2,404.3	6,563.3	0.62
13,486.0	89.60	342.71	7,023.1	6,209.8	-2,433.4	6,657.3	2.12
13,580.0	90.22	342.98	7,023.2	6,299.6	-2,461.1	6,751.3	0.72
13,676.0	88.99	342.27	7,023.9	6,391.2	-2,489.8	6,847.3	1.48
13,770.0	88.93	342.10	7,025.6	6,480.7	-2,518.5	6,941.3	0.19
13,864.0	90.40	341.31	7,026.2	6,570.0	-2,548.0	7,035.3	1.78
13,958.0	90.04	340.95	7,025.8	6,658.9	-2,578.4	7,129.3	0.54
14,052.0	89.52	340.16	7,026.2	6,747.5	-2,609.7	7,223.3	1.01
14,147.0	90.92	342.80	7,025.8	6,837.6	-2,639.9	7,318.2	3.15
14,241.0	90.72	341.92	7,024.4	6,927.2	-2,668.4	7,412.2	0.96
14,335.0	90.84	344.65	7,023.2	7,017.2	-2,695.4	7,506.2	2.91
14,429.0	91.28	344.29	7,021.4	7,107.7	-2,720.6	7,600.1	0.60
14,524.0	90.40	342.27	7,020.0	7,198.7	-2,747.9	7,695.1	2.32
14,618.0	90.57	341.83	7,019.2	7,288.1	-2,776.9	7,789.0	0.50
14,711.0	90.84	342.54	7,018.1	7,376.7	-2,805.3	7,882.0	0.82
14,805.0	90.31	342.45	7,017.2	7,466.3	-2,833.6	7,976.0	0.57
14,900.0	89.78	340.95	7,017.1	7,556.5	-2,863.4	8,071.0	1.67
14,994.0	89.43	339.99	7,017.7	7,645.1	-2,894.8	8,165.0	1.09
15,089.0	90.31	340.51	7,017.9	7,734.5	-2,926.9	8,259.9	1.08
15,183.0	91.36	342.71	7,016.6	7,823.7	-2,956.6	8,353.9	2.59
15,278.0	92.24	342.27	7,013.6	7,914.2	-2,985.2	8,448.9	1.04
15,374.0	90.40	342.80	7,011.4	8,005.8	-3,014.0	8,544.8	1.99
15,468.0	89.80	341.94	7,011.2	8,095.4	-3,042.4	8,638.8	1.12
15,562.0	90.04	341.22	7,011.3	8,184.6	-3,072.1	8,732.8	0.81
15,656.0	90.48	340.78	7,010.9	8,273.4	-3,102.7	8,826.8	0.66



Company:	Antero Resources	Local Co-ordinate Reference:	Well Bennett Unit 1H
Project:	Harrison County West Virginia	TVD Reference:	Bennett 1H 1235 GL + 28 KB @ 1263.0usft
Site:	Bennett/Brutus Pad	MD Reference:	Bennett 1H 1235 GL + 28 KB @ 1263.0usft
Well:	Bennett Unit 1H	North Reference:	Grid
Wellbore:	Original Wellpath	Survey Calculation Method:	Minimum Curvature
Design:	As Drilled	Database:	Oklahoma District

MD (usft)	Inc (°)	Azi (azimuth) (°)	TVD (usft)	N/S (usft)	E/W (usft)	V. Sec (usft)	DLeg (°/100usft)
15,751.0	91.54	340.51	7,009.2	8,363.0	-3,134.2	8,921.8	1.15
15,845.0	88.72	338.14	7,009.0	8,451.0	-3,167.4	9,015.6	3.92
15,901.0	89.08	338.05	7,010.1	8,502.9	-3,188.3	9,071.5	0.66
15,955.0	89.08	338.05	7,011.0	8,553.0	-3,208.5	9,125.4	0.00

Measured Depth (usft)	Vertical Depth (usft)	Local Coordinates		Comment
		+N/-S (usft)	+E/-W (usft)	
6,548.0	6,544.3	10.8	-63.5	Middlesex
6,754.0	6,723.1	47.3	-156.2	Burkett
6,794.0	6,752.0	57.5	-181.8	Tully
7,184.0	6,939.7	232.8	-465.8	Marcellus

Checked By: _____ Approved By: _____ Date: _____

RECEIVED
Office of Oil and Gas
MAY 26 2015
WV Department of
Environmental Protection