

State of West Virginia
Department of Environmental Protection - Office of Oil and Gas
Well Operator's Report of Well Work

API 47 - 033 - 05680 County Harrison District Union
Quad West Milford Pad Name Bennett Pad Field/Pool Name -----
Farm name Robert & Patricia Bennett Well Number Bennett Unit 1H
Operator (as registered with the OOG) Antero Resources Corporation
Address 1615 Wynkoop Street City Denver State CO Zip 80202

As Drilled location NAD 83/UTM Attach an as-drilled plat, profile view, and deviation survey
Top hole Northing 4,339,512.054m Easting 545,383.000m
Landing Point of Curve Northing 4,339,687.83m Easting 545,192.93m
Bottom Hole Northing 4,342,119.001m Easting 544,405.020m

Elevation (ft) 1240' GL Type of Well New Existing Type of Report Interim Final
Permit Type Deviated Horizontal Horizontal 6A Vertical Depth Type Deep Shallow
Type of Operation Convert Deepen Drill Plug Back Redrilling Rework Stimulate
Well Type Brine Disposal CBM Gas Oil Secondary Recovery Solution Mining Storage Other _____
Type of Completion Single Multiple Fluids Produced Brine Gas NGL Oil Other _____
Drilled with Cable Rotary

Drilling Media Surface hole Air Mud Fresh Water Intermediate hole Air Mud Fresh Water Brine
Production hole Air Mud Fresh Water Brine

Mud Type(s) and Additive(s)
Air - Foam & 4% KCL
Mud - Polymer

RECEIVED
Office of Oil and Gas
MAY 26 2015
WV Department of
Environmental Protection

Date permit issued 10/16/2012 Date drilling commenced 5/22/2013 Date drilling ceased 8/22/2013
Date completion activities began 2/22/2014 Date completion activities ceased 6/22/2014
Verbal plugging (Y/N) N/A Date permission granted N/A Granted by N/A

Please note: Operator is required to submit a plugging application within 5 days of verbal permission to plug

Freshwater depth(s) ft 121' Open mine(s) (Y/N) depths N
Salt water depth(s) ft 1574', 1576' Void(s) encountered (Y/N) depths N
Coal depth(s) ft None Identified Cavern(s) encountered (Y/N) depths N
Is coal being mined in area (Y/N) N

Reviewed by:
AL 5/27/15
W.S. 6/2/15
06/05/2015

API 47- 033 - 05680 Farm name Robert & Patricia Bennett Well number Bennett Unit 1H

CASING STRINGS	Hole Size	Casing Size	Depth	New or Used	Grade wt/ft	Basket Depth(s)	Did cement circulate (Y/ N) * Provide details below*
Conductor	30"	20"	40'	New	94#/H-40	N/A	Y
Surface	17-1/2"	13-3/8"	547'	New	48#/H-40	N/A	Y
Coal							
Intermediate 1	12-1/4"	9-5/8"	2624'	New	36#/J-55	N/A	Y
Intermediate 2							
Intermediate 3							
Production	8-3/4"/8-1/2"	5-1/2"	15,955'	New	20#/P-110	N/A	Y
Tubing		2-3/8"	7984'		4.7#/N-80	N/A	N/A
Packer type and depth set		N/A					

Comment Details _____

CEMENT DATA	Class/Type of Cement	Number of Sacks	Slurry wt (ppg)	Yield (ft ³ /sks)	Volume (ft ³)	Cement Top (MD)	WOC (hrs)
Conductor	Class A	200 sx	15.6	1.18	38 Cu. Ft.	0'	8 Hrs.
Surface	Class A	667 sx	15.6	1.18	380 Cu. Ft.	0'	8 Hrs.
Coal							
Intermediate 1	Class A	963 sx	15.6	1.18	822 Cu. Ft.	0'	8 Hrs.
Intermediate 2							
Intermediate 3							
Production	Class H	940 sx (Lead), 1435 sx (Tail)	13.5 (Lead), 15.2 (Tail)	1.44 (Lead), 1.80 (Tail)	3169 Cu. Ft.	~500' into Intermediate Casing	8 Hrs.
Tubing							

Drillers TD (ft) 15,955' MD, 7011' TVD (BHL); 7034' TVD (Deepest Point Drilled) Loggers TD (ft) 15,905' MD
 Deepest formation penetrated Marcellus Plug back to (ft) N/A
 Plug back procedure N/A

Kick off depth (ft) 6415'

Check all wireline logs run caliper density deviated/directional induction
 neutron resistivity gamma ray temperature sonic

Well cored Yes No Conventional Sidewall Were cuttings collected Yes No

DESCRIBE THE CENTRALIZER PLACEMENT USED FOR EACH CASING STRING _____

Conductor - 0
 Surface - 1 above guide shoe, 1 above insert float, 1 every 4th joint to surface
 Intermediate - 1 above float joint, 1 above float collar, 1 every 4th joint to surface
 Production - 1 above float joint, 1 below float collar, 1 every 3rd joint to top of cement

WAS WELL COMPLETED AS SHOT HOLE Yes No DETAILS _____

WAS WELL COMPLETED OPEN HOLE? Yes No DETAILS _____

WERE TRACERS USED Yes No TYPE OF TRACER(S) USED N/A

RECEIVED
Office of Oil and Gas

MAY 26 2015

WV Department of Environmental Protection

API 47- 033 - 05680 Farm name Robert & Patricia Bennett Well number Bennett Unit 1H

<u>PRODUCING FORMATION(S)</u>	<u>DEPTHS</u>	
<u>Marcellus</u>	<u>6916' (Top)</u> TVD	<u>7160' (Top)</u> MD
_____	_____	_____
_____	_____	_____
_____	_____	_____

Please insert additional pages as applicable.

GAS TEST Build up Drawdown Open Flow OIL TEST Flow Pump
 SHUT-IN PRESSURE Surface 3600 psi Bottom Hole ---- psi DURATION OF TEST ---- hrs
 OPEN FLOW Gas 12,579 mcfpd Oil ---- bpd NGL ---- bpd Water ---- bpd GAS MEASURED BY Estimated Orifice Pilot

LITHOLOGY/ FORMATION	TOP	BOTTOM	TOP	BOTTOM	DESCRIBE ROCK TYPE AND RECORD QUANTITY AND TYPE OF FLUID (FRESHWATER, BRINE, OIL, GAS, H ₂ S, ETC)
	DEPTH IN FT NAME TVD	DEPTH IN FT TVD	DEPTH IN FT MD	DEPTH IN FT MD	
	0		0		
					SEE ATTACHED EXHIBIT 3

Please insert additional pages as applicable.

Drilling Contractor Frontier Drilling LLC
 Address 562 Spring Run Road City Pennsboro State WV Zip 26415

Logging Company Rush Wellsite Services
 Address 600 Alpha Drive City Canonsburg State PA Zip 15317

Cementing Company Allied Oil & Gas Services, LLC
 Address 1036 East Main Street City Bridgeport State WV Zip 26330

Stimulating Company Baker Hughes
 Address 837 Philippi Pike City Clarksburg State WV Zip 26301

Please insert additional pages as applicable.

Company: US Well Services
 Address: 533 Industrial Park Drive, Jane Lew, WV 26378

Completed by Natalie Komp Telephone 303-357-6820
 Signature Natalie Komp Title Permitting Agent Date 5/21/2015

RECEIVED
 Office of Oil and Gas
 MAY 26 2015

API 47-033-05680 Farm Name Robert & Patricia Bennett Well Number Bennett Unit 1H

EXHIBIT 1

Stage No.	Perforation Date	Perforated from MD ft.	Perforated to MD ft.	Number of Perforations	Formations
1	22-Feb-14	15,716	15,904	60	Marcellus
2	1-Apr-14	15,492	15,680	60	Marcellus
3	1-Apr-14	15,268	15,456	60	Marcellus
4	2-Apr-14	15,044	15,232	60	Marcellus
5	2-Apr-14	14,820	15,008	60	Marcellus
6	2-Apr-14	14,596	14,784	60	Marcellus
7	3-Apr-14	14,372	14,560	60	Marcellus
8	3-Apr-14	14,148	14,336	60	Marcellus
9	4-Apr-14	13,924	14,112	60	Marcellus
10	4-Apr-14	13,700	13,888	60	Marcellus
11	4-Apr-14	13,476	13,664	60	Marcellus
12	4-Apr-14	13,252	13,440	60	Marcellus
13	5-Apr-14	13,028	13,216	60	Marcellus
14	5-Apr-14	12,804	12,992	60	Marcellus
15	5-Apr-14	12,580	12,768	60	Marcellus
16	5-Apr-14	12,356	12,545	60	Marcellus
17	5-Apr-14	12,132	12,321	60	Marcellus
18	5-Apr-14	11,908	12,097	60	Marcellus
19	6-Apr-14	11,684	11,873	60	Marcellus
20	7-Apr-14	11,460	11,649	60	Marcellus
21	7-Apr-14	11,236	11,425	60	Marcellus
22	7-Apr-14	11,012	11,201	60	Marcellus
23	7-Apr-14	10,788	10,977	60	Marcellus
24	3-Jun-14	10,564	10,753	60	Marcellus
25	3-Jun-14	10,340	10,529	60	Marcellus
26	3-Jun-14	10,116	10,305	60	Marcellus
27	4-Jun-14	9,892	10,081	60	Marcellus
28	4-Jun-14	9,668	9,857	60	Marcellus
29	4-Jun-14	9,444	9,633	60	Marcellus
30	4-Jun-14	9,220	9,409	60	Marcellus
31	4-Jun-14	8,996	9,185	60	Marcellus
32	5-Jun-14	8,772	8,961	60	Marcellus
33	5-Jun-14	8,548	8,737	60	Marcellus
34	5-Jun-14	8,324	8,513	60	Marcellus
35	5-Jun-14	8,100	8,289	60	Marcellus
36	5-Jun-14	7,876	8,065	60	Marcellus
37	6-Jun-14	7,652	7,841	60	Marcellus
38	6-Jun-14	7,428	7,617	60	Marcellus
39	6-Jun-14	7,204	7,393	60	Marcellus

RECEIVED
Office of Oil and Gas

MAY 26 2015

WV Department of Environmental Protection 06/05/2015

API 47-033-05680 Farm Name Robert & Patricia Bennett Well Number Bennett Unit 1H

EXHIBIT 2

Stage No.	Stimulations Date	Avg Pump Rate	Avg Treatment Pressure (PSI)	Max Breakdown Pressure (PSI)	ISIP (PSI)	Amount of Proppant (lbs)	Amount of Water (bbls)	Amount of Nitrogen/ other (units)
1	1-Apr-14	77.2	7,569	N/A	5,706	259,970	7,039	N/A
2	1-Apr-14	74.7	7,672	6,275	4,668	256,434	6,834	N/A
3	1-Apr-14	76.3	7,650	5,738	4,542	255,907	6,769	N/A
4	2-Apr-14	78.0	7,580	5,580	4,780	262,195	6,934	N/A
5	2-Apr-14	77.0	7,600	6,065	4,897	215,016	7,426	N/A
6	2-Apr-14	77.0	7,600	6,065	4,897	215,016	7,426	N/A
7	3-Apr-14	80.6	7,394	5,750	4,694	262,500	6,786	N/A
8	3-Apr-14	72.0	7,198	5,850	4,722	257,347	6,772	N/A
9	4-Apr-14	78.0	7,691	5,892	4,726	256,206	6,772	N/A
10	4-Apr-14	77.4	7,740	5,511	4,690	213,583	7,228	N/A
11	4-Apr-14	76.0	7,616	5,551	4,689	255,905	6,761	N/A
12	4-Apr-14	77.6	7,843	5,822	4,738	236,842	7,344	N/A
13	5-Apr-14	77.0	7,436	5,468	5,090	255,126	7,559	N/A
14	5-Apr-14	78.9	7,370	5,634	4,768	260,857	6,660	N/A
15	5-Apr-14	78.9	7,560	5,765	4,954	260,901	6,667	N/A
16	5-Apr-14	78.0	7,236	5,640	4,812	258,595	6,704	N/A
17	5-Apr-14	78.0	7,272	5,726	4,555	261,818	6,742	N/A
18	5-Apr-14	83.8	7,390	5,317	4,937	257,933	6,592	N/A
19	6-Apr-14	79.0	6,818	5,144	4,815	259,293	6,675	N/A
20	7-Apr-14	86.0	7,574	5,308	4,367	259,678	6,654	N/A
21	7-Apr-14	78.9	6,702	5,017	5,066	256,427	6,481	N/A
22	7-Apr-14	79.4	6,935	5,272	5,075	259,458	6,529	N/A
23	7-Apr-14	78.5	6,863	5,306	4,860	259,984	6,591	N/A
24	3-Jun-14	79.1	6,733	5,615	5,483	248,520	6,444	N/A
25	3-Jun-14	80.2	6,789	5,725	5,335	248,160	6,440	N/A
26	3-Jun-14	77.0	6,931	5,399	5,103	259,220	6,169	N/A
27	4-Jun-14	78.0	7,398	6,063	4,645	260,000	6,401	N/A
28	4-Jun-14	77.9	6,961	5,746	5,712	246,320	6,391	N/A
29	4-Jun-14	79.6	7,040	5,840	5,079	253,800	6,367	N/A
30	4-Jun-14	77.0	6,929	5,963	4,964	260,580	6,334	N/A
31	4-Jun-14	78.0	7,065	6,032	5,232	254,500	6,368	N/A
32	5-Jun-14	77.0	7,152	5,934	4,852	258,940	6,395	N/A
33	5-Jun-14	77.3	6,592	5,791	5,308	251,750	6,320	N/A
34	5-Jun-14	78.7	6,629	6,007	5,151	255,130	6,327	N/A
35	5-Jun-14	79.0	6,928	5,821	4,861	259,450	6,297	N/A
36	5-Jun-14	79.0	6,843	6,020	5,056	259,575	6,285	N/A
37	6-Jun-14	81.3	7,076	5,903	5,400	258,700	6,258	N/A
38	6-Jun-14	79.3	6,914	5,946	4,906	257,840	6,312	N/A
39	6-Jun-14	78.0	6,478	5,964	4,605	262,130	6,645	N/A
	AVG=	78.3	7,199	5,723	4,942	9,891,606	259,698	TOTAL

RECEIVED
Office of Oil and Gas

MAY 26 2015

WV Department of Environmental Protection
06/05/2015

EXHIBIT 3

LITHOLOGY/ FORMATION	TOP DEPTH (TVD)	BOTTOM DEPTH (TVD)	TOP DEPTH (MD)	BOTTOM DEPTH (MD)
	From Surface	From Surface	From Surface	From Surface
Fresh Water	121'	N/A	121'	N/A
Sandstone	0	420	0	420
Trace Coal	est. 420	425	est. 420	425
Sandstone	est. 425	476	est. 425	476
Shale	est. 476	816	est. 476	816
Sandstone	est. 816	866	est. 816	866
Shale	est. 866	1,006	est. 866	1,006
Sandstone	est. 1006	1,616	est. 1006	1,616
Limestone	est. 1616	1,629	est. 1616	1,629
Big Lime	1,629	1,714	1,629	1,714
Big Injun	1,714	2,021	1,714	2,021
Gantz Sand	2,021	2,110	2,021	2,110
Fifty Foot Sandstone	2,110	2,248	2,110	2,248
Gordon	2,248	2,512	2,248	2,512
Fifth Sandstone	2,512	2,565	2,512	2,565
Bayard	2,565	2,946	2,565	2,946
Warren	2,946	3,219	2,946	3,219
Speechley	3,219	3,461	3,219	3,461
Baltown	3,461	3,976	3,461	3,976
Bradford	3,976	4,551	3,976	4,551
Benson	4,551	4,745	4,551	4,745
Alexander	4,745	4,912	4,745	4,912
Elk	4,912	6,291	4,912	6,267
Sycamore	6,291	6,520	6,267	6,524
Middlesex	6,520	6,699	6,524	6,730
Burkett	6,699	6,728	6,730	6,770
Tully	6,728	6,916	6,770	7,160
Marcellus	6,916	NA	7,160	NA

*Please note Antero determines shallow formation tops based on mud that are only run on one well on a multi-well pad. The measured depth (MD) data on subsequent wells may be slightly different due to the well's unique departure.

RECEIVED
Office of Oil and Gas

MAY 26 2015

WV Department of
Environmental Protection

06/05/2015

Hydraulic Fracturing Fluid Product Component Information Disclosure

Job Start Date:	4/1/2014
Job End Date:	6/6/2014
State:	West Virginia
County:	Harrison
API Number:	47-033-056880-00-00
Operator Name:	Antero Resources Corporation
Well Name and Number:	Bennett Unit 1H
Longitude:	-80.47457200
Latitude:	39.20360000
Datum:	NAD27
Federal/Tribal Well:	NO
True Vertical Depth:	7,034
Total Base Water Volume (gall):	7,036,848
Total Base Non Water Volume:	0

Hydraulic Fracturing Fluid Composition:

Trade Name	Supplier	Purpose	Ingredients	Chemical Abstract Service Number (CAS #)	Maximum Ingredient Concentration in Additive (% by mass)**	Maximum Ingredient Concentration in HF Fluid (% by mass)**	Comments
Water	Operator	Carrier	Water	7732-18-5	100.00000	90.51172	
Sand, White, 40/70	Baker Hughes	Proppant	MSDS and Non-MSDS Ingredients Listed Below	N/A		5.17984	
Sand, White, 20/40	Baker Hughes	Proppant	MSDS and Non-MSDS Ingredients Listed Below	N/A		3.19302	
Sand, White, 100 mesh	Baker Hughes	Proppant	MSDS and Non-MSDS Ingredients Listed Below	N/A		0.64579	
HCl, 10.1 - 15%	Baker Hughes	Acidizing	MSDS and Non-MSDS Ingredients Listed Below	N/A		0.20755	SmartCare Product
GW-3LDF	Baker Hughes	Gelling Agent	MSDS and Non-MSDS Ingredients Listed Below	N/A		0.08899	SmartCare Product
FRW-18	Baker Hughes	Friction Reducer	MSDS and Non-MSDS Ingredients Listed Below	N/A		0.05998	SmartCare Product
Scaletrol 720	Baker Hughes	Scale Inhibitor	MSDS and Non-MSDS Ingredients Listed Below	N/A		0.01509	SmartCare Product



RECEIVED
Office of Oil and Gas

MAY 26 2015

WV Department of
Environmental Protection

06/05/2015

MAY 26 2015
06/05/2015

WV Department of
Environmental Protection

RECEIVED
Office of Oil and Gas

Alpha 1427	Baker Hughes	Biocide	MSDS and Non-MSDS Ingredients Listed Below	N/A					0.01323	SmartCare Product	
Enzyme G-NE	Baker Hughes	Breaker	MSDS and Non-MSDS Ingredients Listed Below	N/A					0.01088	SmartCare Product	
Ferrotrol 300L	Baker Hughes	Iron Control	MSDS and Non-MSDS Ingredients Listed Below	N/A					0.00148	SmartCare Product	
CI-14	Baker Hughes	Corrosion Inhibitor	MSDS and Non-MSDS Ingredients Listed Below	N/A					0.00035	SmartCare Product	
Ingredients shown above are subject to 29 CFR 1910.1200(i) and appear on Material Safety Data Sheets (MSDS). Ingredients shown below are Non-MSDS.											
Ingredients in Additive (s) (MSDS and non- MSDS)	Baker Hughes	See Trade Name(s) List									
		Crystalline Silica (Quartz)	14808-60-7	100.00000					9.01149		
		Water	7732-18-5	95.00000					0.22679		
		Mineral Oil	8042-47-5	70.00000					0.06224		
		Guar Gum	9000-30-0	60.00000					0.05335		
		Hydrochloric Acid	7647-01-0	15.00000					0.03111		
		Paraffinic Petroleum Distillate	64742-55-8	30.00000					0.02668		
		Hydrotreated Light Distillate	64742-47-8	30.00000					0.01798		
		Poly (acrylamide-co-acrylic acid) partial sodium salt	62649-23-4	30.00000					0.01798		
		Ethylene Glycol	107-21-1	45.00000					0.00678		
		1-butoxy-2-propanol	5131-66-8	5.00000					0.00445		
		Crystalline Silica: Quartz	14808-60-7	5.00000					0.00445		
		isotridecanol, ethoxylated	9043-30-5	5.00000					0.00445		
		Glutaraldehyde	111-30-8	30.00000					0.00396		
		Sodium Chloride	7647-14-5	5.00000					0.00315		
		2-Propenoic, Polymer with Sodium Phosphinate, Sodium Salt	71050-62-9	20.00000					0.00302		
		Ammonium Chloride	12125-02-9	3.00000					0.00180		
		Didecyl Dimethyl Ammonium Chloride	7173-51-5	10.00000					0.00132		
		Oleamide DEA	93-83-4	2.00000					0.00120		
		Alcohols, C12-16, ethoxylated	68551-12-2	2.00000					0.00120		
		Citric Acid	77-92-9	60.00000					0.00088		
		Calcium Chloride	10043-52-4	5.00000					0.00075		
		Ethanol	64-17-5	5.00000					0.00066		
		Quaternary Ammonium Compound	68424-85-1	5.00000					0.00066		
		Hemicellulase Enzyme Concentrate	9025-56-3	5.00000					0.00054		
		Methanol	67-56-1	100.00000					0.00035		
		Polyoxyethylene Sorbitan Monooleate	9005-65-6	0.50000					0.00030		
		Sorbitan Monooleate	1338-43-8	0.50000					0.00030		
		Potassium Chloride	7447-40-7	1.00000					0.00015		

	Polyoxyalkylenes	38951-67-7	30.00000	0.00010
	2-butoxy-1-propanol	15821-83-7	0.10000	0.00009
	Fatty Acids	61790-12-3	10.00000	0.00003
	Modified Thiourea Polymer	88527-49-1	7.00000	0.00002
	Olefin	64743-02-8	5.00000	0.00002
	Propargyl Alcohol	107-19-7	5.00000	0.00002
	Formaldehyde	50-00-0	1.00000	0.00000

* Total Water Volume sources may include fresh water, produced water, and/or recycled water
 ** Information is based on the maximum potential for concentration and thus the total may be over 100%

Note: For Field Development Products (products that begin with FDP), MSDS level only information has been provided.
 Ingredient information for chemicals subject to 29 CFR 1910.1200(i) and Appendix D are obtained from suppliers Material Safety Data Sheets (MSDS)

RECEIVED
 Office of Oil and Gas
 MAY 26 2015
 WV Department of
 Environmental Protection

06/05/2015

4,620' to Top Hole

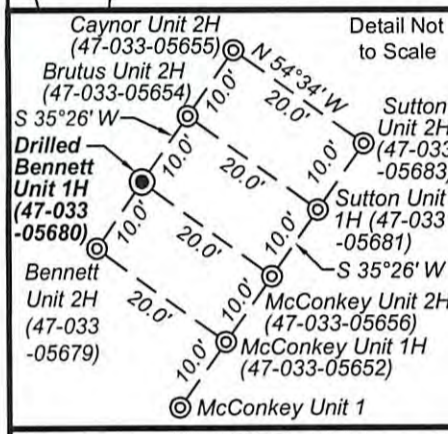
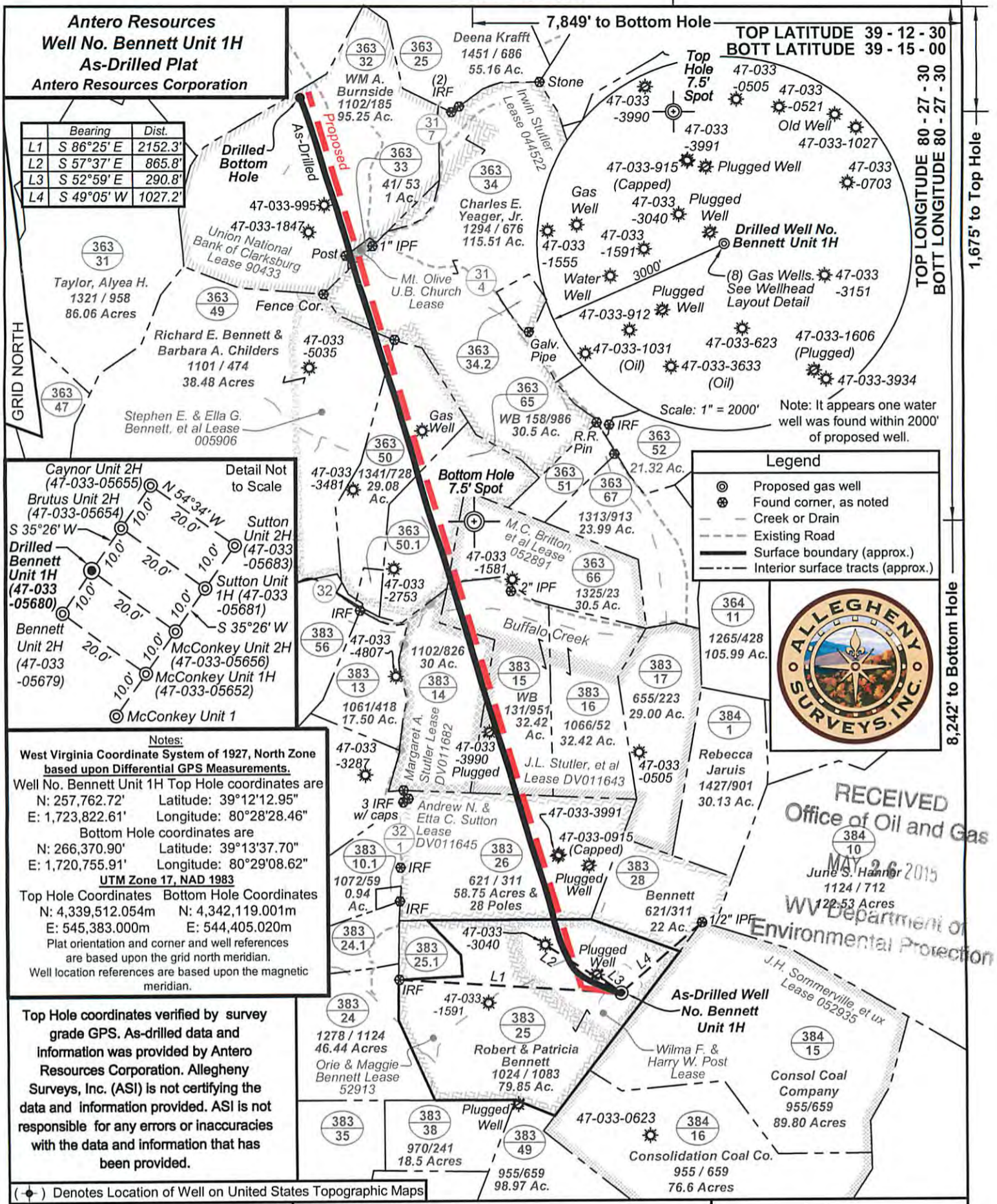
7,849' to Bottom Hole

TOP LATITUDE 39 - 12 - 30
BOTT LATITUDE 39 - 15 - 00

TOP LONGITUDE 80 - 27 - 30
BOTT LONGITUDE 80 - 27 - 30

1,675' to Top Hole

8,242' to Bottom Hole



Notes:
 West Virginia Coordinate System of 1927, North Zone based upon Differential GPS Measurements.
 Well No. Bennett Unit 1H Top Hole coordinates are
 N: 257,762.72' Latitude: 39°12'12.95"
 E: 1,723,822.61' Longitude: 80°28'28.46"
 Bottom Hole coordinates are
 N: 266,370.90' Latitude: 39°13'37.70"
 E: 1,720,755.91' Longitude: 80°29'08.62"
UTM Zone 17, NAD 1983
 Top Hole Coordinates Bottom Hole Coordinates
 N: 4,339,512.054m N: 4,342,119.001m
 E: 545,383.000m E: 544,405.020m
 Plat orientation and corner and well references are based upon the grid north meridian.
 Well location references are based upon the magnetic meridian.

Top Hole coordinates verified by survey grade GPS. As-drilled data and information was provided by Antero Resources Corporation. Allegheny Surveys, Inc. (ASI) is not certifying the data and information provided. ASI is not responsible for any errors or inaccuracies with the data and information that has been provided.

Legend

- Proposed gas well
- Found corner, as noted
- Creek or Drain
- Existing Road
- Surface boundary (approx.)
- Interior surface tracts (approx.)



RECEIVED
 Office of Oil and Gas
 MAY 26 2015
 June S. Hanner
 1124 / 712
 122.53 Acres
 WV Department of Environmental Protection

FILE NO: 102-36-U-11
 DRAWING NO: 102-11 Bennett 1H As-Drilled
 SCALE: 1" = 1200'
 MINIMUM DEGREE OF ACCURACY: Submeter
 PROVEN SOURCE OF ELEVATION: WVDOT, Bridgeport, WV

STATE OF WEST VIRGINIA
 DEPARTMENT OF ENVIRONMENTAL PROTECTION
OIL AND GAS DIVISION

DATE: April 27 20 15
 OPERATOR'S WELL NO. Bennett Unit 1H
 API WELL NO
 47 - 033 - 05680
 STATE COUNTY PERMIT

WELL TYPE: OIL GAS LIQUID INJECTION WASTE DISPOSAL
 (IF GAS) PRODUCTION: STORAGE DEEP SHALLOW
 LOCATION: ELEVATION: Existing Grade 1240' WATERSHED: Middle West Fork River QUADRANGLE: West Milford
 DISTRICT: Union Andrew N. & Etta C. Sutton; Wilma F. & Harry W. Post; DV011682; COUNTY: Harrison
 SURFACE OWNER: Robert & Patricia Bennett Stephen E. & Ella G. Bennett, et al; J.L. Stuller, et al; DV011645; ACREAGE: 79.85 1; 30; 26;
 ROYALTY OWNER: Union National Bank of Clarksburg; Irwin Stuller; M.C. Britton, et al LEASE NO: 90433; 044522; 005906 ACREAGE: 100; 124.25; 101.3;
 PROPOSED WORK: DRILL CONVERT DRILL DEEPER FRACTURE OR STIMULATE PLUG OFF OLD FORMATION
 PERFORATE NEW FORMATION OTHER PHYSICAL CHANGE IN WELL (SPECIFY) As-Drilled
 PLUG AND ABANDON CLEAN OUT AND REPLUG TARGET FORMATION: Marcellus Shale DEPTH: 7,011' TVD 15,955' MD

WELL OPERATOR: Antero Resources Corporation DESIGNATED AGENT: Dianna Stamper - CT Corporation System
 ADDRESS: 1615 Wynkoop Street ADDRESS: 5400 D Big Tyler Road
 Denver, CO 80202 Charleston, WV 25313