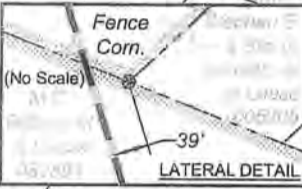


4,626' to Top Hole

Antero Resources
Well No. Bennett Unit 2H
Antero Resources
Appalachian Corporation

	Bearing	Dist
L1	N 46°59' E	361.6'
L2	S 51°05' E	290.9'
L3	S 56°59' E	865.0'
L4	S 48°58' W	1036.6'

Taylor, Alyea H.
1321 / 958
86.06 Acres



Notes:
West Virginia Coordinate System of 1927, North Zone based upon Differential GPS Measurements.
Well No. Bennett Unit 2H Top Hole coordinates are
N: 257,755.05" Latitude: 39°12'12.88"
E: 1,723,816.79" Longitude: 80°28'28.53"
Bottom Hole coordinates are
N: 266,990.52" Latitude: 39°13'43.89"
E: 1,721,307.76" Longitude: 80°29'01.69"
UTM Zone 17, NAD 1983
Top Hole Coordinates Bottom Hole Coordinates
N: 4,339,509.688m N: 4,342,310.571m
E: 545,381.265m E: 544,569.997m
Plat orientation and corner and well references are based upon the grid north meridian.
Well location references are based upon the magnetic meridian.

(☉) Denotes Location of Well on United States Topographic Maps

I, the undersigned, hereby certify that this plat is correct to the best of my knowledge and belief and shows all the information required by law and the regulations issued and prescribed by the Department of Environmental Protection.

Dwayne D. Matheny, P.S. 2070

FILE NO: 102-36-U-11
DRAWING NO: 102-11 Bennett 2H Well Plat
SCALE: 1" = 1200'
MINIMUM DEGREE OF ACCURACY: Submeter
PROVEN SOURCE OF ELEVATION: WVDOT, Bridgeport, WV

STATE OF WEST VIRGINIA
DEPARTMENT OF ENVIRONMENTAL PROTECTION
OIL AND GAS DIVISION

DATE: August 14 20 12
OPERATOR'S WELL NO. Bennett Unit 2H
API WELL NO
47 - 033 - 05679 H6A
STATE COUNTY PERMIT

WELL TYPE: OIL GAS LIQUID INJECTION WASTE DISPOSAL
(IF GAS) PRODUCTION: STORAGE DEEP SHALLOW
LOCATION: ELEVATION: 1235' WATERSHED: Isaacs Creek QUADRANGLE: West Milford
DISTRICT: Union COUNTY: Harrison
SURFACE OWNER: Robert & Patricia Bennett Andrew N. & Etta C. Sutton; Wilma F. & Harry W. Post, DV011645; ACREAGE: 79.85 26;
Stephen E. & Ella G. Bennett, et al; J.L. Stuller, et al 052891; DV011643; 48; 72; 80;
ROYALTY OWNER: Union National Bank of Clarksburg; Irwin Stuller; M.C. Britton, et al; LEASE NO: 90433; 044522; 005906 ACREAGE: 100; 124.25; 101.3;
PROPOSED WORK: DRILL CONVERT DRILL DEEPER FRACTURE OR STIMULATE PLUG OFF OLD FORMATION
 PERFORATE NEW FORMATION OTHER PHYSICAL CHANGE IN WELL (SPECIFY)
 PLUG AND ABANDON CLEAN OUT AND REPLUG TARGET FORMATION: Marcellus Shale ESTIMATED DEPTH: 8,200' TVD 18,350' MD

WELL OPERATOR: Antero Resources Appalachian Corporation DESIGNATED AGENT: Dianna Stamper - CT Corporation System
ADDRESS: 1625 17th Street ADDRESS: 5400 D Big Tyler Road
Denver, CO 80202 Charleston, WV 25313

10/19/2012

7,297' to Bottom Hole

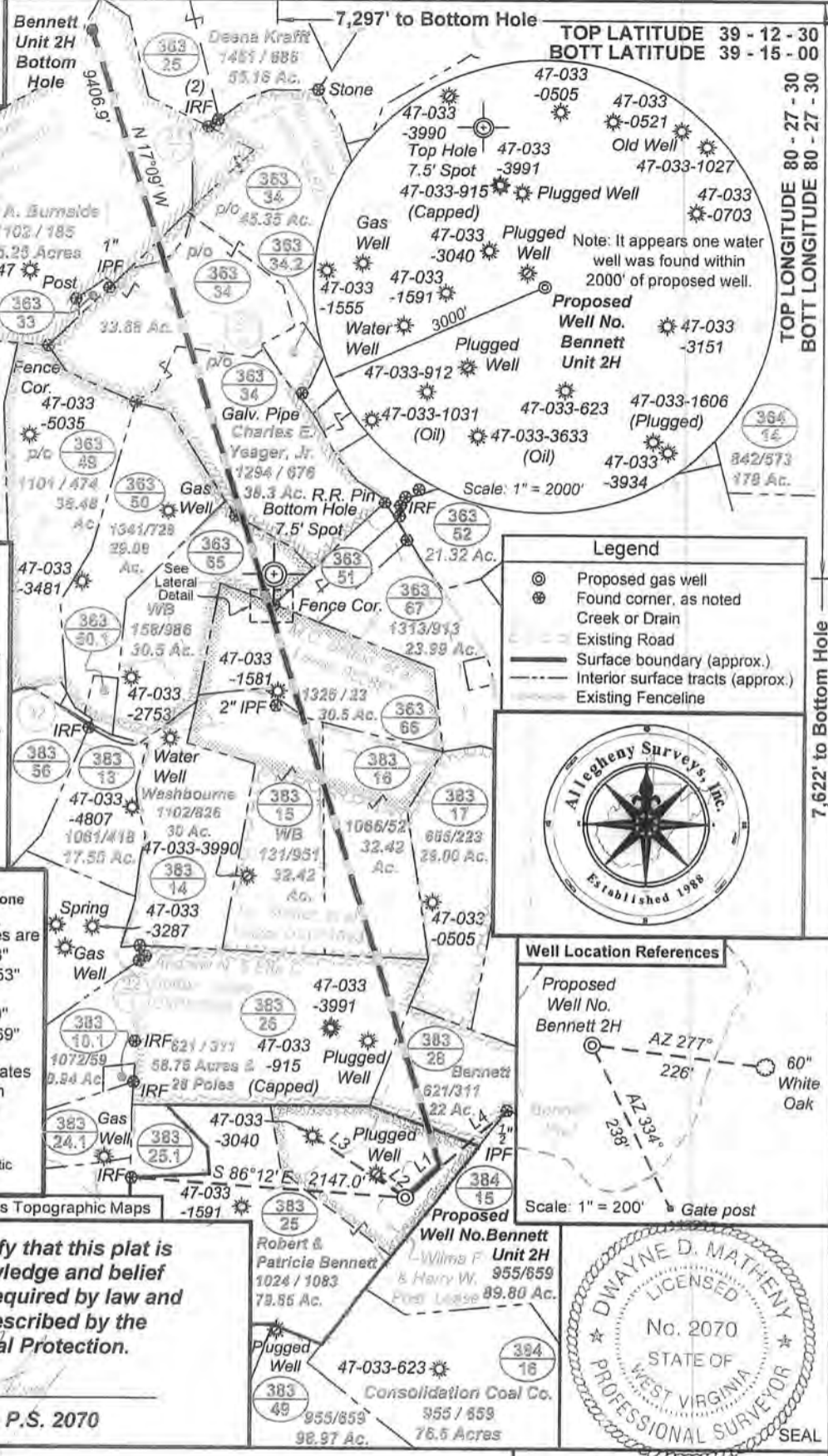
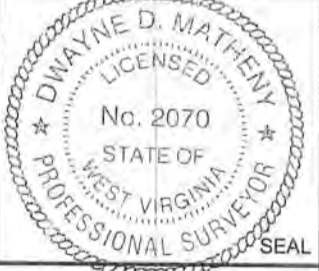
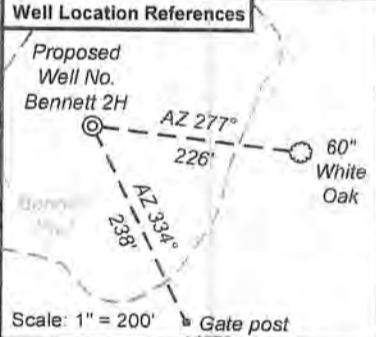
TOP LATITUDE 39 - 12 - 30
BOTT LATITUDE 39 - 15 - 00

TOP LONGITUDE 80 - 27 - 30
BOTT LONGITUDE 80 - 27 - 30

1,683' to Top Hole

7,622' to Bottom Hole

- Legend**
- ☉ Proposed gas well
 - ☉ Found corner, as noted
 - Creek or Drain
 - Existing Road
 - Surface boundary (approx.)
 - Interior surface tracts (approx.)
 - Existing Fenceline



33-05079



PETRA 8/15/2012 4:13:21 PM

RECEIVED
Office of Oil and Gas

AUG 22 2012

WV Department of
Environmental Protection

Antero Resources Corporation

APPALACHIAN BASIN

Bennett Unit 2H

Harrison County

REMARKS
QUADRANGLE: WEST MILFORD
WATERSHED: ISAACS CREEK
DISTRICT: UNION

0 2,000 4,000
FEET

August 15, 2012

10/19/2012