

33-05678



Antero Resources
 Everett Unit 2H
 Harrison County West Virginia
 Northing: 14231172.68
 Easting: 1778741.65
 Sidetrack 1

WELL DETAILS: Everett Unit 2H

+N/-S	+E/-W	Northing	Ground Level	1358.0	Longitude	Slot
0.0	0.0	14231172.68	Easting	1778741.6539° 11' 20.871 N80° 30' 42.520 W		



REFERENCE INFORMATION

Co-ordinate (N/E) Reference: Well Everett Unit 2H, Grid North
 Vertical (TV) Reference: Everett Unit 2H GL 1358 + 28' RKB @ 1386 Ouch (Original Well Elev)
 Section (VS) Reference: Slot - @ (DN, 0 DE)
 Measured Depth Reference: Everett Unit 2H GL 1358 + 28' RKB @ 1386 Ouch (Original Well Elev)
 Calculation Method: Minimum Curvature

PROJECT DETAILS: Harrison County West Virginia

Geodetic System: Universal Transverse Mercator (US Survey Feet)
 Datum: NAD 1927 (NADCON CONUS)
 Ellipsoid: Clarke 1866
 Zone: Zone 17N (84 W to 78 W)
 System Datum: Mean Sea Level

LEGEND

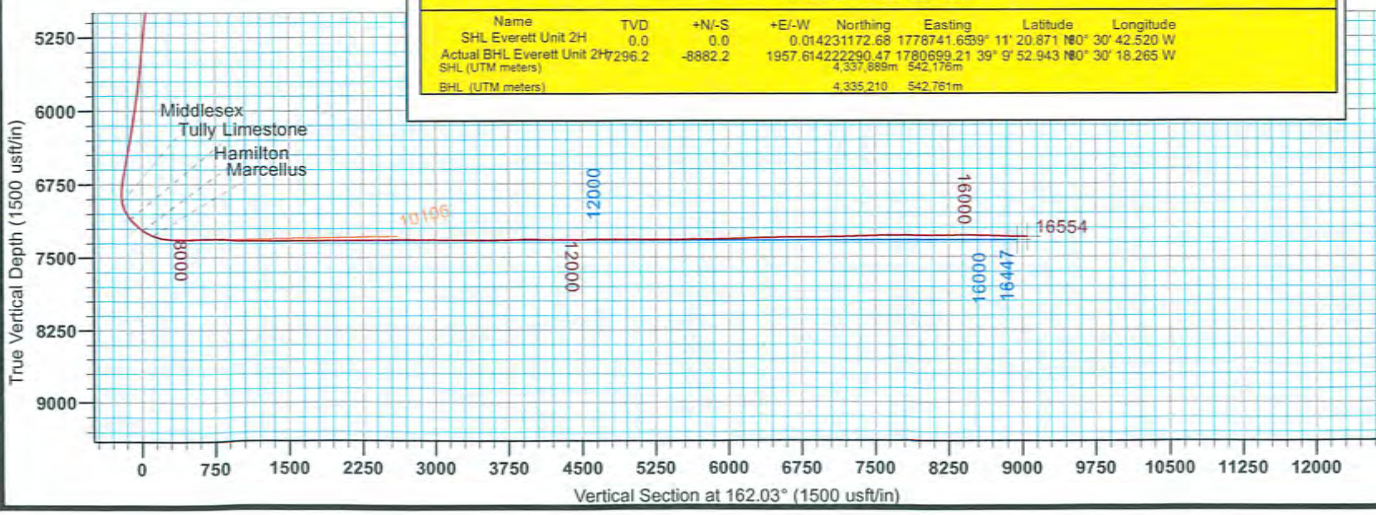
- Everett Unit 2H, Sidetrack 1, Plan 1 ST 1 V0
- Everett Unit 2H, Original Wellpath, Original Wellpath V0
- Thaddeus Unit 1H, Original Wellpath, Original Wellpath V0
- Thaddeus Unit 1H, Original Wellpath, Plan 2 Post Gyro V0
- Thaddeus Unit 2H, Original Wellpath, Plan 4 V0
- Thaddeus Unit 2H, Original Wellpath, Original Wellpath V0
- Mirth Unit 2H, Original Wellpath, As Drilled V0
- Mirth Unit 1H, Original Wellpath, Plan 5 V0
- Mirth Unit 1H, Original Wellpath, As Drilled V0
- Everett Unit 1H, Original Wellpath, Plan 3 V0
- Everett Unit 1H, Original Wellpath, As Drilled V0
- Sidetrack 1

Genie Lightfoot
 15:30, September 09 2013

Scientific Drilling
 421 South Eagle Lane
 Oklahoma City, OK

DESIGN TARGET DETAILS

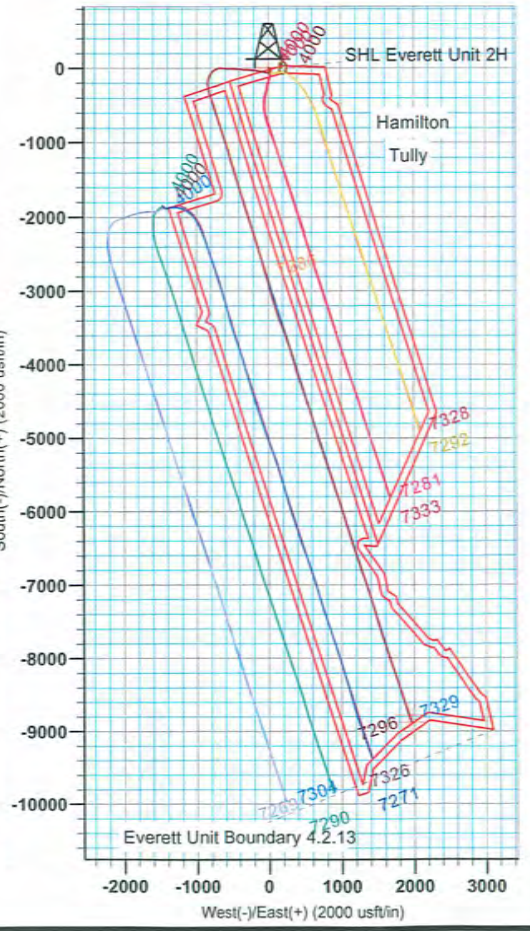
Name	TVD	+N/-S	+E/-W	Northing	Easting	Latitude	Longitude
SHL Everett Unit 2H	0.0	0.0	0.014231172.68	1778741.6539° 11' 20.871 N80° 30' 42.520 W			
Actual BHL Everett Unit 2H	296.2	-8882.2	1957.614222290.47	1780699.21 39' 9" 52.943 N80° 30' 18.265 W			
SHL (UTM meters)			4,337,889m	542,176m			
BHL (UTM meters)			4,335,210	542,761m			



RECEIVED
 OCT 09 2013
 Department of Environmental Protection
 Oil and Gas

DEC 09 2013

Department of Environmental Protection



Azimuths to Grid North
 True North: -0.31°
 Magnetic North: -8.90°

Magnetic Field
 Strength: 52352.0snT
 Dip Angle: 66.81°
 Date: 4/16/2013
 Model: IGRF2010