

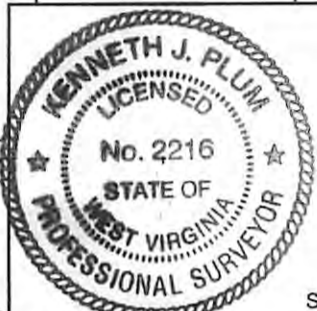
Antero Resources
Well No. Opie Unit 1H
Antero Resources
Appalachian Corporation

Bottom Hole
 7.5' Spot

3,470' to Top Hole
 TOP HOLE LATITUDE 39 - 15 - 00
 BOTTOM HOLE LATITUDE 39 - 12 - 30

Line	Bearing	Distance
L1	S 12°02' E	859.1'
L2	S 14°38' W	417.2'
L3	N 85°29' W	940.7'
L4	N 49°08' W	1354.2'
L5	N 36°00' W	876.1'

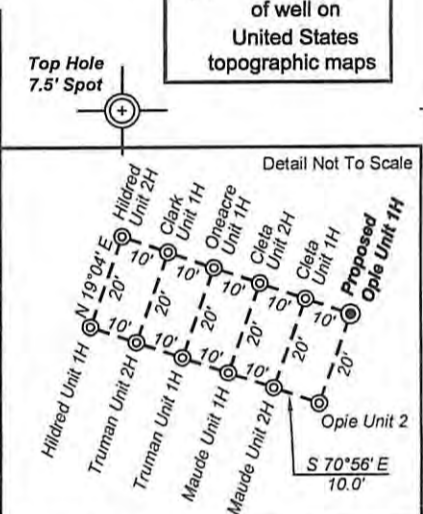
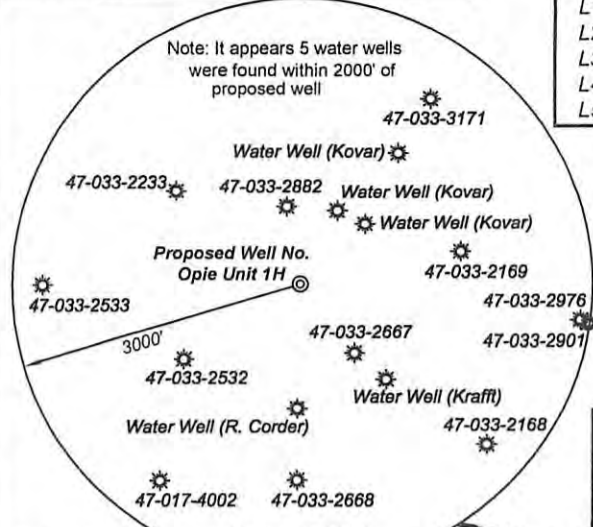
Notes:
 West Virginia Coordinate System of 1927, North Zone based upon Differential GPS Measurements.
 Well Opie Unit 1H Top Hole coordinates are
 N: 264,829.71 Latitude: 39°13'20.31"
 E: 1,701,535.56 Longitude: 80°33'12.62"
 Bottom Hole coordinates are
 N: 259,479.56 Latitude: 39°12'28.22"
 E: 1,708,358.56 Longitude: 80°31'45.14"
UTM Zone 17, NAD 1983
 Top Hole Coordinates: Bottom Hole Coordinates:
 N: 4,341,551.829m N: 4,339,956.566m
 E: 538,557.247m E: 540,663.079m
 Plat orientation and corner and well references are based upon the grid north meridian.
 Well location references are based upon the magnetic meridian.



I, the undersigned, hereby certify that this plat is correct to the best of my knowledge and belief and shows all the information required by law and the regulations issued and prescribed by the Department of Environmental Protection.

Kenneth J. Plum
Kenneth J. Plum, P.S. 2216

(+/-) Denotes location of well on United States topographic maps



- Legend**
- Proposed gas well
 - Found corner, as noted
 - Surface boundary (approx.)
 - Existing Road
 - Interior surface tracts (approx.)
 - Creek or Drain
 - Existing Fenceline



Tax Map 361 Parcels

Par	Owner	DB/Pg	Acres
1 4	Lucille Devericks	WB167/23	9.84
2 3	Lucille Devericks	WB167/23	9.70
3 10	Gerald & Louella Corder	1206/378	82.0
4 11.1	Lorena Krafft, et al	FOB100/347	1.25

FILE NO: 77-36-U-12
 DRAWING NO: 77-12 Opie 1H Well Plat
 SCALE: 1" = 1200'
 MINIMUM DEGREE OF ACCURACY: Submeter
 PROVEN SOURCE OF ELEVATION: WVDOT, Bridgeport, WV

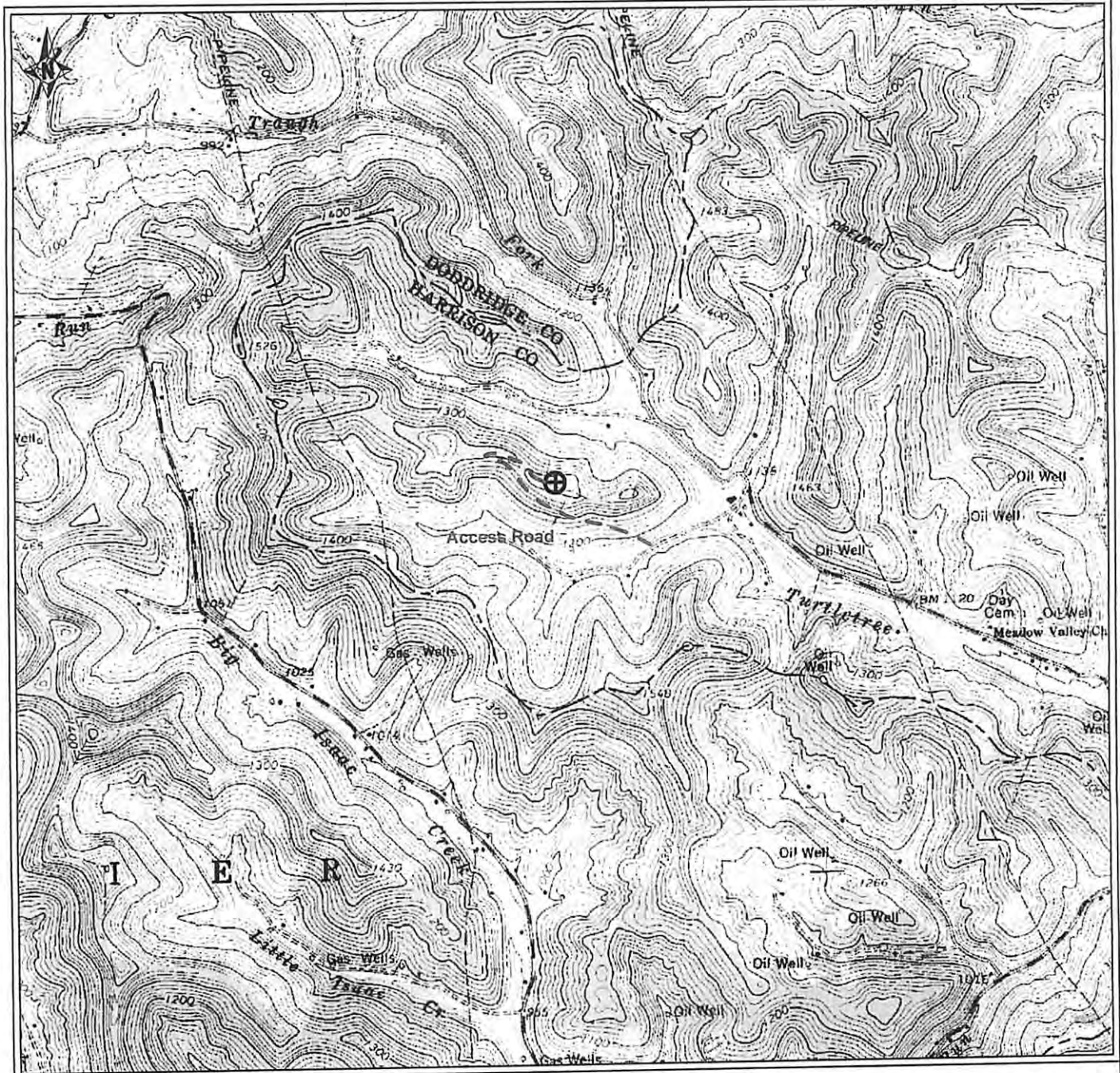
STATE OF WEST VIRGINIA
 DEPARTMENT OF ENVIRONMENTAL PROTECTION
OFFICE OF OIL AND GAS

DATE: August 9 20 12
 OPERATOR'S WELL NO. Opie Unit 1H
 API WELL NO: 47 - 033 - 05677Hb
 STATE COUNTY PERMIT

WELL TYPE: OIL GAS LIQUID INJECTION WASTE DISPOSAL
 (IF GAS) PRODUCTION: STORAGE DEEP SHALLOW
 LOCATION: ELEVATION: 1405' WATERSHED: Turtletree Fork of Tenmile Creek QUADRANGLE: Big Isaac
 DISTRICT: Union COUNTY: Harrison 62
 SURFACE OWNER: Steve C. Kovar Jr. James I. Corder, et ux, et al; James Corder, et ux; Clela Mowrey Heck, widow; J.A.L. Day & Sarah E. Day DAD38064/001 & DAD38064/010 DV017732; 021830; 21897 ACREAGE: 77.87 50; 150; 18
 ROYALTY OWNER: Orié Mitchell; Maude D. Day, et al; A. D. Lawson, et al; Dortha Bland, et al J. T. Somerville, et ux; Opal Mae & Ray Evans, et al DAD038553; 002968 ACREAGE: 48.69; 147; 105; 54
 PROPOSED WORK: DRILL CONVERT DRILL DEEPER FRACTURE OR STIMULATE PLUG OFF OLD FORMATION
 PERFORATE NEW FORMATION OTHER PHYSICAL CHANGE IN WELL (SPECIFY) _____ TVD 7,700'
 PLUG AND ABANDON CLEAN OUT AND REPLUG TARGET FORMATION: Marcellus Shale ESTIMATED DEPTH: MD 16,500'

WELL OPERATOR: Antero Resources Appalachian Corporation DESIGNATED AGENT: Dianna Stamper - CT Corporation System
 ADDRESS: 1625 17th Street ADDRESS: 5400 D Big Tyler Road
 Denver, CO 80202 Charleston, WV 25313

10/26/2012



PETRA 6/6/2012 11:56:26 AM

Antero Resources Corporation

Appalachian Basin

Opie Unit 1H

Harrison County



REMARKS
 QUADRANGLE: BIG ISSAC
 WATERSHED: TURTLE TREE FORK OF
 TENMILE CREEK
 DISTRICT: UNION

June 6, 2012

RECEIVED
 Office of Oil and Gas

AUG 16 2012

WV Department of
 Environmental Protection