

11,341' to Bottom Hole

1,993' to Top Hole

TOP & BOTTOM LATITUDE 39 - 12 - 30

TOP HOLE LONGITUDE 80 - 30 - 00
BTM HOLE LONGITUDE 80 - 27 - 30

3,992' to Top Hole
11,180' to Bottom Hole

Antero Resources
Well No. Rodney Unit 2H
Antero Resources
Appalachian Corporation

Lovie M. & Forman E. Dawson
Lease DV018997
Velma F. Westfall & Mary W. Westfall
Lease DV019071
Virgil A. Sinclair, et al
Lease DV019126
Edna Mae McCall, et al
Lease DV019149
Violet Lee Rodney
Lease
DAD65614/001

John A. & Carol R. Martin
1121/995
37.19 Ac.

Antero Resources
Appalachian Corp.
1403/903
98.69 Acres

Water Well (John Martin)
Kenneth M. & Elaine Galkins Lease 087930
and
South Penn Oil Co. Lease 031808

Isaacs Creek
Water Well (Joyce Hardisty)
James Findley, et al
Lease 022569

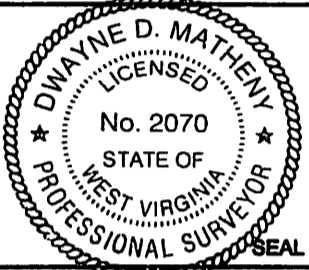
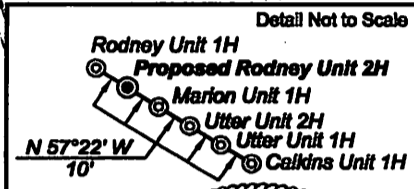
Freddie Daugherty
1290/1103
252.86 Ac.

David L. Hall Lease
Lease 002394

I, the undersigned, hereby certify that this plat is correct to the best of my knowledge and belief and shows all the information required by law and the regulations issued and prescribed by the Department of Environmental Protection.

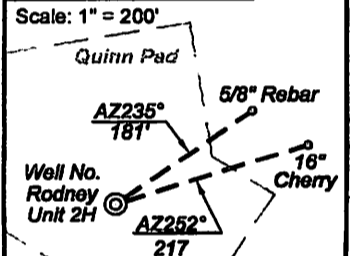
Dwayne D. Matheny, P.S./2070

Top Hole
7.5' Spot

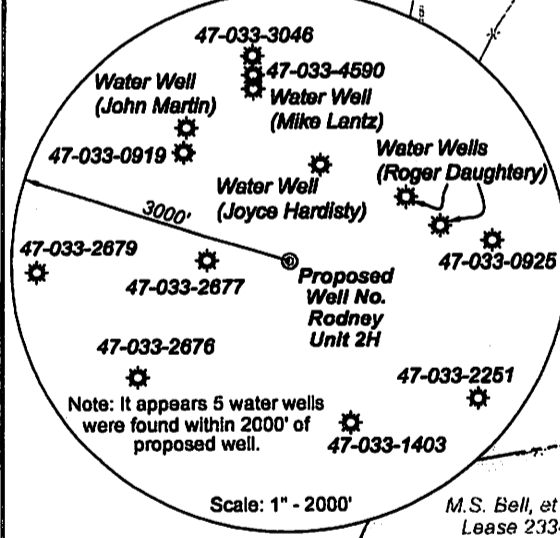


Notes:
West Virginia Coordinate System of 1927, North Zone based upon Differential GPS Measurements.
Well No. Rodney Unit 2H Top Hole coordinates are
N: 255,574.12' Latitude: 39°11'50.32"
E: 1,714,643.23' Longitude: 80°30'24.75"
Bottom Hole coordinates are
N: 248,257.45' Latitude: 39°10'38.28"
E: 1,717,101.72' Longitude: 80°29'52.49"
UTM Zone 17, NAD 1983
Top Hole Coordinates Bottom Hole Coordinates
N: 4,338,798.893m N: 4,336,582.140m
E: 542,597.567m E: 543,383.695m
Plat orientation and corner and well references are based upon the grid north meridian.
Well location references are based upon the magnetic meridian.

Well Location References



Bottom Hole
7.5' Spot



Note: It appears 5 water wells were found within 2000' of proposed well.

Scale: 1" = 2000'

	Bearing	Dist.
L1	S 89°39' E	875.0'
L2	S 50°53' E	872.4'
L3	S 25°19' E	938.0'
L4	N 63°28' W	892.7'
L5	S 52°49' E	303.6'

(+) Denotes location of well on United States topographic maps



- Legend**
- Proposed gas well
 - Found corner, as noted
 - Found Well, as noted
 - Surface boundary (approx.)
 - Interior surface tracts (approx.)
 - Existing Road
 - Creek or Drain

A.F. Daugherty, et al Lease
Rodney Unit 2H
Bottom Hole

FILE NO: 196-36-C-12
DRAWING NO: 196-12 Rodney Unit 2H
SCALE: 1" = 1000'
MINIMUM DEGREE OF ACCURACY: Submeter
PROVEN SOURCE OF ELEVATION: WVDOT, Bridgeport, WV

STATE OF WEST VIRGINIA
DEPARTMENT OF ENVIRONMENTAL PROTECTION
OIL AND GAS DIVISION

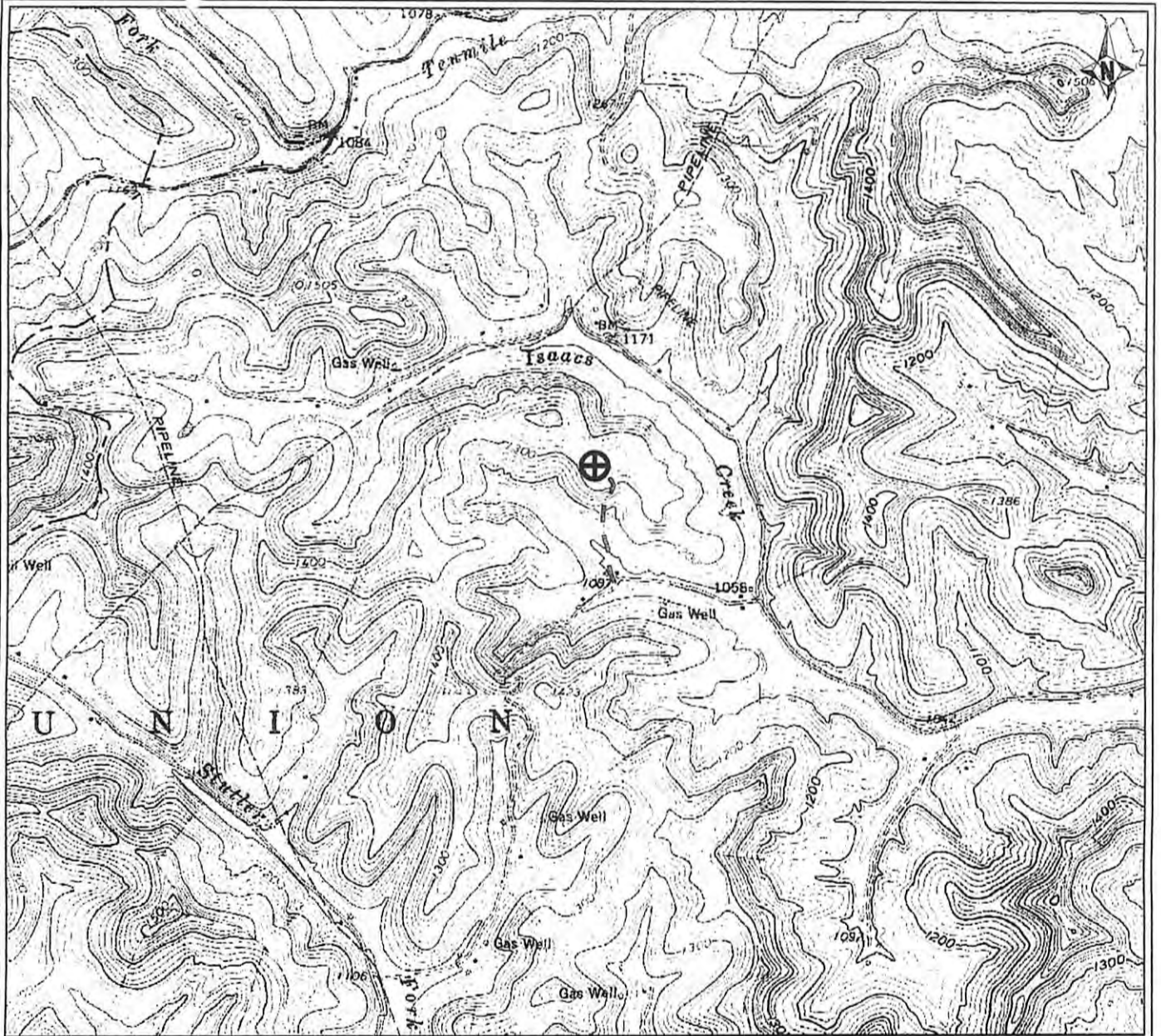
DATE: July 31 2012
OPERATOR'S WELL NO. Rodney Unit 2H
API WELL NO
47 - 033 - 05676
STATE COUNTY PERMIT

WELL TYPE: OIL GAS LIQUID INJECTION WASTE DISPOSAL
(IF GAS) PRODUCTION: STORAGE DEEP SHALLOW
LOCATION: ELEVATION: 1358' WATERSHED: Isaacs Creek QUADRANGLE: West Milford
DISTRICT: Union COUNTY: Harrison
SURFACE OWNER: Antero Resources Wm W. Bowyer & Velma F. Westfall, et al; Mary M. Saylor, et al; Leon F. Wilson, et al; Hallie McGahan, et al; Lovie M. & Forman E. Dawson; A.F. Daugherty, et al; Velma F. Westfall & Mary W. Westfall; Nancy E. Nutter; Edna Mae McCall, et al; Violet Lee Rodney LEASE #: DV019038; 088059; 088076; 088077; DV019126; 003390; DV018997; DV019071 ACREAGE: 98.69 90
OIL & GAS ROYALTY OWNER: Virgil A. Sinclair, et al; Edna Mae McCall, et al; Violet Lee Rodney LEASE #: DV019149; DAD65614/001 ACREAGE: 139; 72; 296
PROPOSED WORK: DRILL CONVERT DRILL DEEPER FRACTURE OR STIMULATE PLUG OFF OLD FORMATION
 PERFORATE NEW FORMATION OTHER PHYSICAL CHANGE IN WELL (SPECIFY) 7,200' TVD
 PLUG AND ABANDON CLEAN OUT AND REPLUG TARGET FORMATION: Marcellus Shale ESTIMATED DEPTH: 12,700' MD

WELL OPERATOR: Antero Resources Appalachian Corporation DESIGNATED AGENT: Dianna Stamper - CT Corporation System
ADDRESS: 1625 17th Street ADDRESS: 5400 D Big Tyler Road
Denver, CO 80202 Charleston, WV 25313

10/26/2012

33-05676



PETRA 7/26/2012 12:07:43 PM

RECEIVED
Office of Oil and Gas

AUG 1 2012

WV Department of
Environmental Protection

Antero Resources Corporation

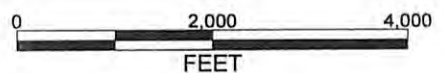
APPALACHIAN BASIN

Quinn Pad

Rodney Unit 2H

Harrison County

REMARKS
QUADRANGLE: BIG ISAAC
WATERSHED: ISAACS CR./W FORK RIVER
DISTRICT: UNION



July 26, 2012

10/26/2012