

312' to Bottom Hole

2,002' to Top Hole

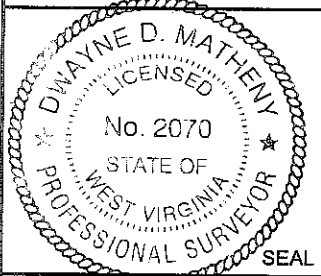
LATITUDE 39 - 12 - 30

LONGITUDE 80 - 30 - 00

3,987' to Top Hole

11,136' to Bottom Hole

Antero Resources
Well No. Rodney Unit 1H
Antero Resources
Appalachian Corporation



Water Well (John Martin)
Kenneth M. & Elaine Calkins Lease 087930
and
South Penn Oil Co. Lease 031608

I, the undersigned, hereby certify that this plat is correct to the best of my knowledge and belief and shows all the information required by law and the regulations issued and prescribed by the Department of Environmental Protection.

Dwayne D. Matheny, P.S./2070

Bearing	Dist.
L1 S 90°00' E	866.6'
L2 S 50°49' E	862.5'
L3 S 24°59' E	929.5'
L4 N 63°22' W	902.6'
L5 S 42°57' W	532.9'

Antero Resources
Appalachian Corp.
1403/903
98.69 Acres

Notes:
West Virginia Coordinate System of 1927, North Zone based upon Differential GPS Measurements.
Well No. Rodney Unit 1H Top Hole coordinates are
N: 255,579.52' Latitude: 39°11'50.37"
E: 1,714,634.81' Longitude: 80°30'24.86"
Bottom Hole coordinates are
N: 248,430.66' Latitude: 39°10'39.90"
E: 1,716,324.55' Longitude: 80°30'02.39"
UTM Zone 17, NAD 1983
Top Hole Coordinates Bottom Hole Coordinates
N: 4,338,800.295m N: 4,336,630.964m
E: 542,594.975m E: 543,146.049m
Plat orientation and corner and well references are based upon the grid north meridian.
Well location references are based upon the magnetic meridian.

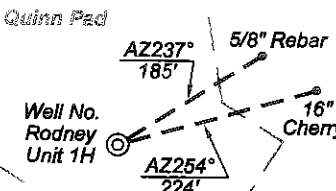
47-033-2546
Lovie M. & Forman E. Dawson
Lease DV018997
Velma F. Westfall & Mary W. Westfall
Lease DV01907
Virgil A. Sinclair, et al
Lease DV019126
Edna Mae McCall, et al
Lease DV019149
Violet Lee Rodney
Lease DAD65614/001

47-033-2676
Robert E. Pollard Jr. & Donna M. Strimel
1397/1290
31.32 Acres

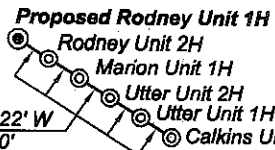
Frances L. Rabens Weaver
47-033-1403
1368/127
66.31 Ac.

Well Location References

Scale: 1" = 200'

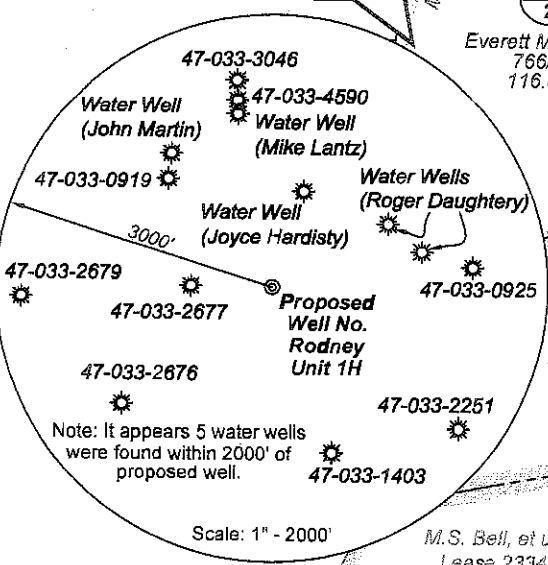


Detail Not to Scale



Bottom Hole 7.5' Spot

Denotes location of well on United States topographic maps



Everett M. Myer Jr. 766/235 116.5 Ac.

Ronald Eugene Randolph, et al 1428/645 103.63 Ac.

Mary Thrash, et al Lease DV020183 William Yates, et al Lease DVC 7810

Betsy J. & Kent R. Spellman 1386/1150 97 Acres

Carol Daugherty Skidmore 791/420 183 Ac.

Geraldine C. Dickenson, et al 1110/725 135.947 Ac.

M.S. Bell, et ux Lease 2334

47-033-1440

FILE NO: 196-36-C-12
DRAWING NO: 196-12 Rodney Unit 1H
SCALE: 1" = 1000'
MINIMUM DEGREE OF ACCURACY: Submeter
PROVEN SOURCE OF ELEVATION: WVDOT, Bridgeport WW

STATE OF WEST VIRGINIA
DEPARTMENT OF ENVIRONMENTAL PROTECTION
OIL AND GAS DIVISION

DATE: July 19 20 12

OPERATOR'S WELL NO. Rodney Unit 1H

API WELL NO

47 033 0567064
STATE COUNTY PERMIT

WELL TYPE: OIL GAS LIQUID INJECTION WASTE DISPOSAL
(IF GAS) PRODUCTION: STORAGE DEEP SHA: LOW

LOCATION: ELEVATION: 1358' WATERSHED: Isaacs Creek QUADRANGLE: Big Isaac

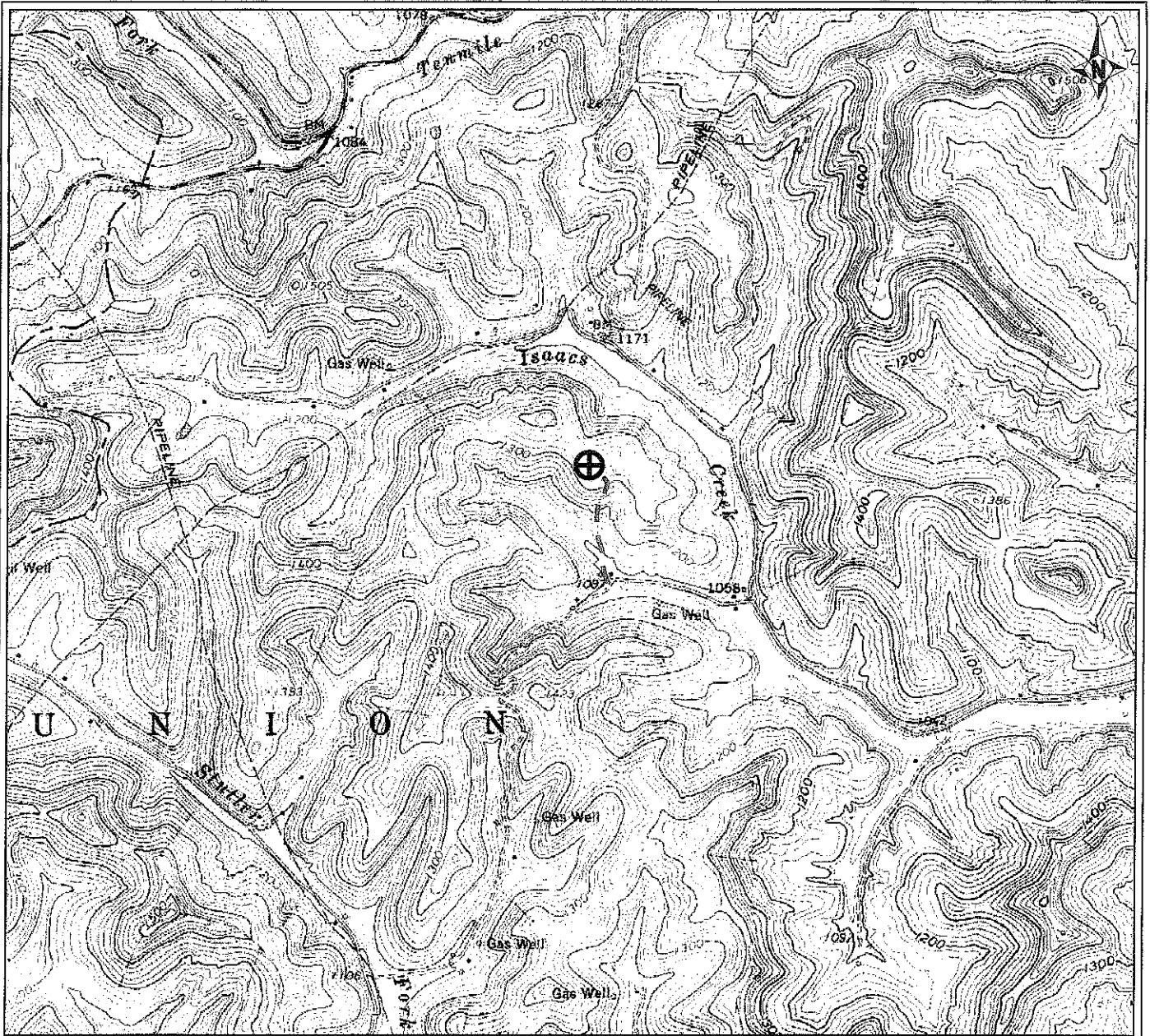
DISTRICT: Union
SURFACE OWNER: Antero Resources Appalachian Corp.
OIL & GAS ROYALTY OWNER: Lovie E. & Forman E. Dawson; Nancy E. Nutter; William Yates, et al
LEASE #: 088077 DV020183; 089076 DV017810; 2334 DV019039; 088059 DV019597; 005660 DV01907; DV019126 DV019149; DAD65614/001 ACREAGE: 98.69 80; 106.77 139; 72; 97; 296

PROPOSED WORK: DRILL CONVERT DRILL NEPPER FRACTURE OR STIMULATE PLUG OFF OLD FORMATION
 PERFORATE NEW FORMATION OTHER PHYSICAL CHANGE IN WELL (SPECIFY) _____ 7,200' TVD
 PLUG AND ABANDON CLEAN OUT AND REPLUG TARGET FORMATION: Marcellus Shale ESTIMATED DEPTH: 13,000' ML

WELL OPERATOR: Antero Resources Appalachian Corporation DESIGNATED AGENT: Dianna Stamper - CT Corporation System
ADDRESS: 1625 17th Street ADDRESS: 5400 D Big Tyler Road
Denver, CO 80202 Charleston, WV 25313

09/28/2012

33-05690



PETRA 7/26/2012 12:07:43 PM

Antero Resources Corporation

APPALACHIAN BASIN

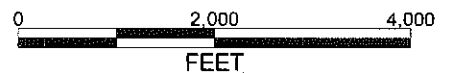
Quinn Pad

Rodney Unit 1H

Harrison County

REMARKS

QUADRANGLE: BIG ISAAC
WATERSHED: ISAACS CR./W FORK RIVER
DISTRICT: UNION



July 26, 2012 09/28/2012

Office of the Registrar

AUG 08 2012

Antero Resources Corporation