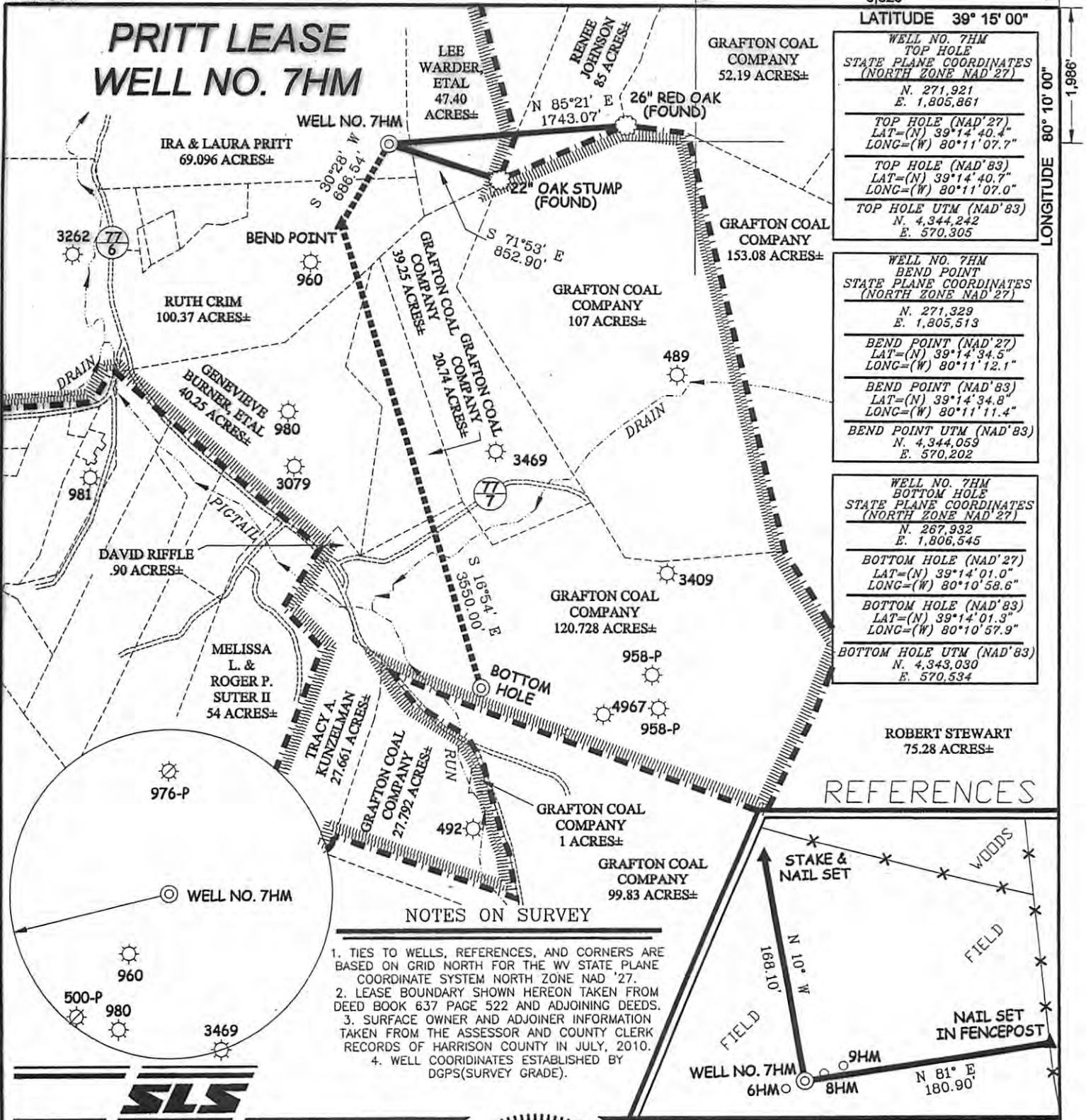


PRITT LEASE WELL NO. 7HM

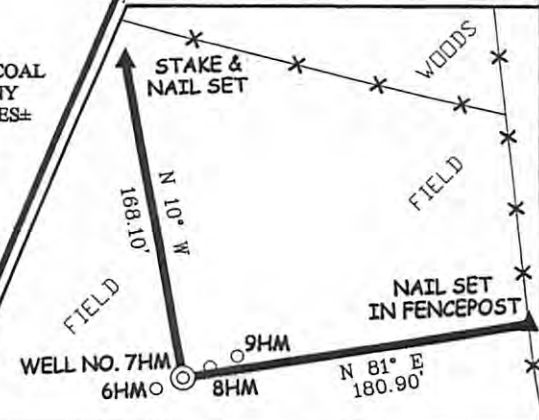


LATTITUDE 39° 15' 00" WELL NO. 7HM TOP HOLE STATE PLANE COORDINATES (NORTH ZONE NAD '27) N. 271,921 E. 1,805,861 TOP HOLE (NAD'27) LAT=(N) 39°14'40.4" LONG=(W) 80°11'07.7" TOP HOLE (NAD'83) LAT=(N) 39°14'40.7" LONG=(W) 80°11'07.0" TOP HOLE UTM (NAD'83) N. 4,344,242 E. 570,305	
WELL NO. 7HM BEND POINT STATE PLANE COORDINATES (NORTH ZONE NAD '27) N. 271,329 E. 1,805,513 BEND POINT (NAD'27) LAT=(N) 39°14'34.5" LONG=(W) 80°11'12.1" BEND POINT (NAD'83) LAT=(N) 39°14'34.8" LONG=(W) 80°11'11.4" BEND POINT UTM (NAD'83) N. 4,344,059 E. 570,202	
WELL NO. 7HM BOTTOM HOLE STATE PLANE COORDINATES (NORTH ZONE NAD '27) N. 267,932 E. 1,806,545 BOTTOM HOLE (NAD'27) LAT=(N) 39°14'01.0" LONG=(W) 80°10'58.6" BOTTOM HOLE (NAD'83) LAT=(N) 39°14'01.3" LONG=(W) 80°10'57.9" BOTTOM HOLE UTM (NAD'83) N. 4,343,030 E. 570,534	

NOTES ON SURVEY

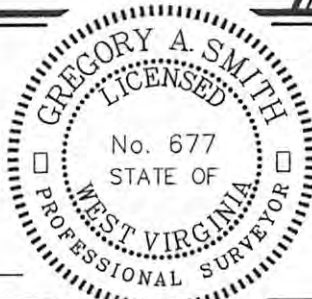
1. TIES TO WELLS, REFERENCES, AND CORNERS ARE BASED ON GRID NORTH FOR THE WV STATE PLANE COORDINATE SYSTEM NORTH ZONE NAD '27.
2. LEASE BOUNDARY SHOWN HEREON TAKEN FROM DEED BOOK 637 PAGE 522 AND ADJOINING DEEDS.
3. SURFACE OWNER AND ADJOINER INFORMATION TAKEN FROM THE ASSESSOR AND COUNTY CLERK RECORDS OF HARRISON COUNTY IN JULY, 2010.
4. WELL COORDINATES ESTABLISHED BY DGPS(SURVEY GRADE).

REFERENCES



I THE UNDERSIGNED, HEREBY CERTIFY THAT THIS PLAT IS CORRECT TO THE BEST OF MY KNOWLEDGE AND BELIEF AND SHOWS ALL THE INFORMATION REQUIRED BY LAW AND THE REGULATIONS ISSUED AND PRESCRIBED BY THE DIVISION OF ENVIRONMENTAL PROTECTION.

P.S. 677 *Gregory A. Smith*



(+) DENOTES LOCATION OF WELL ON UNITED STATES TOPOGRAPHIC MAPS.
 DATE NOVEMBER 17, 20 11
 OPERATORS WELL NO. PRITT NO. 7HM
 API WELL NO. 47-033-05598H6A
 STATE COUNTY PERMIT

MINIMUM DEGREE OF ACCURACY 1/200 FILE NO. 7696P7HM (376-22)
 PROVEN SOURCE OF ELEVATION DGPS (SURVEY GRADE) SCALE 1" = 1000'

CANCELLED
 STATE OF WEST VIRGINIA
 DIVISION OF ENVIRONMENTAL PROTECTION
 OFFICE OF OIL AND GAS

WELL TYPE: OIL GAS LIQUID INJECTION WASTE DISPOSAL IF "GAS" PRODUCTION STORAGE DEEP SHALLOW

LOCATION: ELEVATION 1,351' WATERSHED BEARDS RUN & PIGTAIL RUN
 DISTRICT SIMPSON COUNTY HARRISON QUADRANGLE BROWNTON 7.5'

SURFACE OWNER IRA & LAURA PRITT ACREAGE 69.096±
 ROYALTY OWNER IRA & LAURA PRITT, ETAL LEASE ACREAGE 69.096, 100.37, 40.25, 20.74, & 120.728±

PROPOSED WORK: LEASE NO.
 DRILL CONVERT DRILL DEEPER REDRILL FRACTURE OR STIMULATE PLUG OFF OLD FORMATION
 PERFORATE NEW FORMATION PLUG AND ABANDON CLEAN OUT AND REPLUG OTHER
 PHYSICAL CHANGE IN WELL (SPECIFY) TARGET FORMATION MARCELLUS SHALE
 ESTIMATED DEPTH 7,905' TVD/ 12,700' MD

WELL OPERATOR PDC MOUNTAINEER, LLC DESIGNATED AGENT JAMIE HAGA
 ADDRESS 120 GENESIS BOULEVARD BRIDGEPORT, WV 26330 ADDRESS 120 GENESIS BOULEVARD BRIDGEPORT, WV 26330

09/13/2013