

**PDC MOUNTAINEER, LLC  
WELL NO. D'ANNUNZIO 2HM**

NOTE:  
-BOTTOM HOLE 15' SOUTH OF LEASE LINE

LATITUDE 39° 17' 30"

**NOTES:**

-PLAT ORIENTATION, CORNERS, AND WELL REFERENCES ARE BASED UPON THE GRID NORTH MERIDIAN FOR THE WV STATE PLANE COORDINATE SYSTEM, NORTH ZONE NAD 27. WELL LOCATION REFERENCE TIES ARE BASED UPON THE MAGNETIC MERIDIAN.

-THERE APPEARS TO BE NO WATER WELLS LOCATED WITHIN 1000' OF WELL 2HM.

ANNE A. SKASIK  
TM 327 PAR 8.1  
WB 86 PG 203  
1.36 AC ±

KURT G. & PATRICIA A. SKASIK  
TM 327 PAR 8.7  
TM 327 PAR 8.12  
DB 1309 PG 653  
3.47 AC ±

HANSCOR & ASSOCIATES  
TM 327 PAR 8.3  
DB 1357 PG 292  
1.674 AC ±

TRUSTEES OF THE CHURCH  
OF JESUS CHRIST OF  
LATTER DAY SAINTS  
TM 327 PAR 8.8  
DB 1410 PG 153  
5.591 AC ±

JOYCE PROPERTIES INC.  
TM 327 PAR 8.2  
DB 966 PG 175  
5.435 AC ±

JOYCE PROPERTIES INC. 1  
TM 327 PAR 8.8  
DB 1966 PG 175  
23.28 AC ±

JOYCE PROPERTIES INC.  
TM 327 PAR 8.11  
DB 1300 PG 900  
2.59 AC ±

HENRY M. BASKERVILLE, JR.  
AGENT ET. AL.  
TM 327 PAR 16  
DB 1131 PG 831  
18 AC ±

JOYCE PROPERTIES INC.  
TM 327 PAR 15  
TM 327 PAR 14  
DB 966 PG 175

RCB HIGH SCHOOL  
CAMPUS

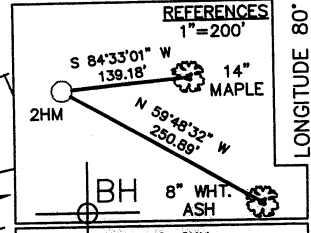
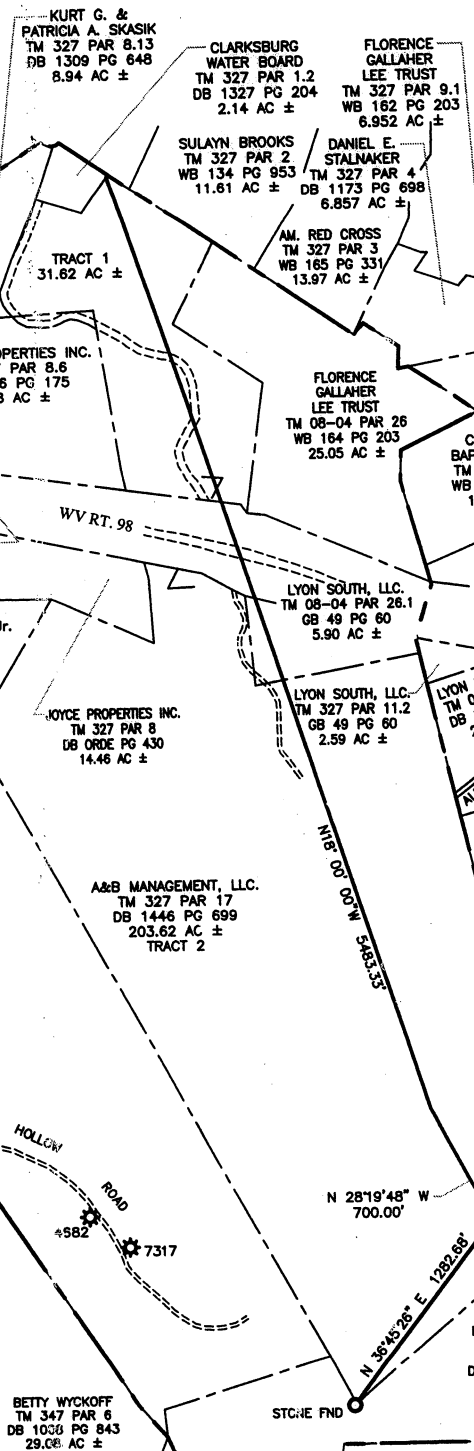
HARRISON CO. B.O.E.  
TM 327 PAR 26  
DB 1230 PG 1018  
185.84 AC ±

TH | BH  
DENOTES LOCATION OF  
WELL ON UNITED STATES  
TOPOGRAPHIC MAP



Daniel L. Wheeler, P.S. 530

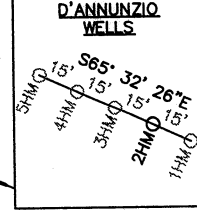
I, THE UNDERSIGNED, HEREBY CERTIFY THAT THIS PLAT IS CORRECT TO THE BEST OF MY KNOWLEDGE AND BELIEF AND SHOWS ALL THE INFORMATION REQUIRED BY LAW AND THE REGULATIONS ISSUED AND PRESCRIBED BY THE DIVISION OF ENVIRONMENTAL PROTECTION.



**REFERENCES**  
1"=200'  
S 84°33'01" W 139.18' 14" MAPLE  
N 59°48'32" W 230.09' 2HM  
BH 8" WHIT. ASH

**WELL NO. 2HM TOP HOLE**  
STATE PLANE COORDINATES  
(NAD 27 NORTH ZONE)  
N: 275989.6869  
E: 1763261.8575  
LAT: 39° 15' 17.03"  
LONG: 80° 20' 09.63"  
STATE PLANE COORDINATES  
(NAD 83 NORTH ZONE-METER)  
N: 84133.348  
E: 527860.245  
UTM COORDINATES  
(NAD 83-METER)  
TM 327 PAR 19  
GB 49 PG 60  
E: 557306.000  
LAT: 39° 15' 17.36"  
LON: 80° 20' 08.95"

**WELL NO. 2HM BOTTOM HOLE**  
STATE PLANE COORDINATES  
(NAD 27 NORTH ZONE)  
N: 281820.7996  
E: 1761235.2323  
LAT: 39° 16' 14.48"  
LONG: 80° 20' 36.06"  
STATE PLANE COORDINATES  
(NAD 83 NORTH ZONE-METER)  
N: 85910.658  
E: 527242.544  
UTM COORDINATES  
(NAD 83-METER)  
TM 327 PAR 27  
WB 145 PG 478  
E: 556659.018  
LAT: 39° 16' 14.80"  
LON: 80° 20' 35.41"



FILE NO. 050-4349  
SCALE: 1"=1000'  
MINIMUM DEGREE OF ACCURACY: 1 in 2500  
PROVEN SOURCE OF ELEVATION: OPUS SURVEY GRADE GPS



DATE OCTOBER 5, 2011  
OPERATOR'S WELL NO. D'ANNUNZIO NO. 2HM  
API WELL NO. Revised  
47 - 033 - 0556411  
STATE COUNTY PERMIT

WELL TYPE: OIL  GAS  LIQUID INJECTION  WASTE DISPOSAL  (IF "GAS"), PRODUCTION  STORAGE  DEEP  SHALLOW   
LOCATION: ELEVATION: 1110' WATER SHED: NUTTER RUN OF ELK CREEK  
DISTRICT: CLARK COUNTY: HARRISON  
QUADRANGLE: CLARKSBURG 7.5' ACREAGE: 235.24 AC ±  
SURFACE OWNER: A&B MANAGEMENT, LLC. LEASE ACREAGE: 241.14 AC ±  
OIL & GAS ROYALTY OWNER: A&B MANAGEMENT, LLC. ET. AL. LEASE NO.



PROPOSED WORK: DRILL  CONVERT  DRILL DEEPER  REDRILL  FRACTURE OR STIMULATE   
PERFORATE NEW FORMATION  PLUG OFF OLD FORMATION  OTHER PHYSICAL CHANGE IN WELL (SPECIFY)

PLUG AND ABANDON CLEAN OUT AND REPLUG  
TARGET FORMATION: MARCELLUS SHALE ESTIMATED DEPTH: 7,070 TVD / 13,800' MD

WELL OPERATOR: PDC MOUNTAINEER, LLC DESIGNATED AGENT: LARRY E. CARDER  
ADDRESS: 120 GENESIS BOULEVARD ADDRESS: 120 GENESIS BOULEVARD  
BRIDGEPORT, WV 26330 BRIDGEPORT, WV 26330