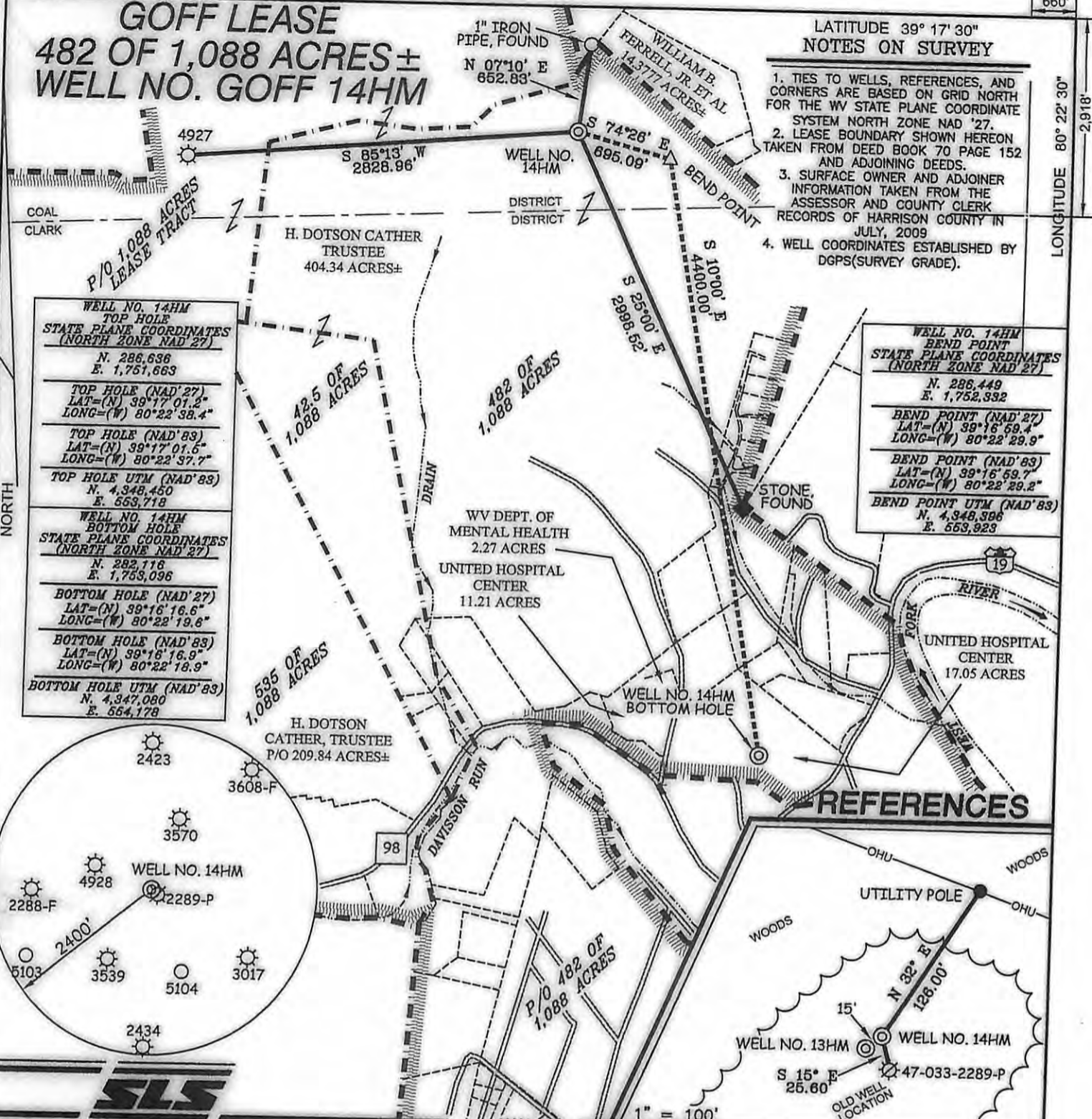


GOFF LEASE 482 OF 1,088 ACRES ± WELL NO. GOFF 14HM

LATITUDE 39° 17' 30"
NOTES ON SURVEY

1. TIES TO WELLS, REFERENCES, AND CORNERS ARE BASED ON GRID NORTH FOR THE WV STATE PLANE COORDINATE SYSTEM NORTH ZONE NAD '27.
2. LEASE BOUNDARY SHOWN HEREON TAKEN FROM DEED BOOK 70 PAGE 152 AND ADJOINING DEEDS.
3. SURFACE OWNER AND ADJOINER INFORMATION TAKEN FROM THE ASSESSOR AND COUNTY CLERK RECORDS OF HARRISON COUNTY IN JULY, 2009
4. WELL COORDINATES ESTABLISHED BY DGPS(SURVEY GRADE).

LONGITUDE 80° 22' 30"
2,918'



WELL NO. 14HM TOP HOLE
STATE PLANE COORDINATES (NORTH ZONE NAD '27)
N. 286,636
E. 1,751,663

TOP HOLE (NAD '27)
LAT=(N) 39°17'01.2"
LONG=(W) 80°22'38.4"

TOP HOLE (NAD '83)
LAT=(N) 39°17'01.6"
LONG=(W) 80°22'37.7"

TOP HOLE UTM (NAD '83)
N. 4,348,450
E. 553,718

WELL NO. 14HM BOTTOM HOLE
STATE PLANE COORDINATES (NORTH ZONE NAD '27)
N. 282,116
E. 1,753,096

BOTTOM HOLE (NAD '27)
LAT=(N) 39°16'16.6"
LONG=(W) 80°22'19.6"

BOTTOM HOLE (NAD '83)
LAT=(N) 39°16'16.9"
LONG=(W) 80°22'18.9"

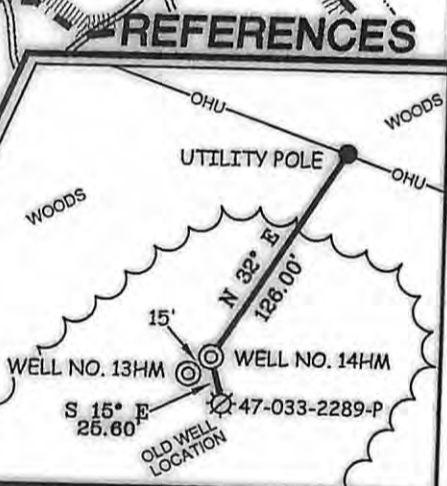
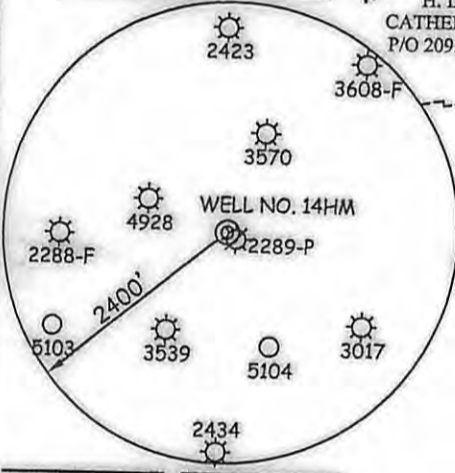
BOTTOM HOLE UTM (NAD '83)
N. 4,347,080
E. 554,178

WELL NO. 14HM BEND POINT
STATE PLANE COORDINATES (NORTH ZONE NAD '27)
N. 286,449
E. 1,752,392

BEND POINT (NAD '27)
LAT=(N) 39°16'59.4"
LONG=(W) 80°22'29.9"

BEND POINT (NAD '83)
LAT=(N) 39°16'59.7"
LONG=(W) 80°22'29.2"

BEND POINT UTM (NAD '83)
N. 4,348,396
E. 553,923



I THE UNDERSIGNED, HEREBY CERTIFY THAT THIS PLAT IS CORRECT TO THE BEST OF MY KNOWLEDGE AND BELIEF AND SHOWS ALL THE INFORMATION REQUIRED BY LAW AND THE REGULATIONS ISSUED AND PRESCRIBED BY THE DIVISION OF ENVIRONMENTAL PROTECTION.

P.S. 677 *Gregory A. Smith*



(+) DENOTES LOCATION OF WELL ON UNITED STATES TOPOGRAPHIC MAPS.
DATE AUGUST 18, 20 10
OPERATOR'S WELL NO. GOFF NO. 14HM
API WELL NO. 47 - 033 - 05483H
STATE COUNTY PERMIT

MINIMUM DEGREE OF ACCURACY 1 / 200 FILE NO. 7129P14HM (308-32)
PROVEN SOURCE OF ELEVATION DGPS (SURVEY GRADE) SCALE 1" = 1000'

STATE OF WEST VIRGINIA
DIVISION OF ENVIRONMENTAL PROTECTION
OFFICE OF OIL AND GAS

WELL TYPE: OIL GAS LIQUID INJECTION WASTE DISPOSAL IF "GAS" PRODUCTION STORAGE DEEP SHALLOW

LOCATION: ELEVATION 1,408' WATERSHED LIMESTONE RUN & DAVISSON RUN
DISTRICT COAL COUNTY HARRISON QUADRANGLE WOLF SUMMIT 7.5'
SURFACE OWNER H. DOTSON CATHER, TRUSTEE ACREAGE 404.34±
ROYALTY OWNER H. DOTSON CATHER, TRUSTEE LEASE ACREAGE 1,088±
PROPOSED WORK: DRILL CONVERT DRILL DEEPER REDRILL FRACTURE OR STIMULATE PLUG OFF OLD FORMATION PERFORATE NEW FORMATION PLUG AND ABANDON CLEAN OUT AND REPLUG OTHER

PHYSICAL CHANGE IN WELL (SPECIFY) TARGET FORMATION MARCELLUS SHALE
ESTIMATED DEPTH 7,275' TVD/ 12,400' MD

WELL OPERATOR PDC MOUNTAINEER, LLC DESIGNATED AGENT GARY W. FRIDLEY
ADDRESS 120 GENESIS BOULEVARD BRIDGEPORT, WV 26330
ADDRESS 120 GENESIS BOULEVARD BRIDGEPORT, WV 26330

07/19/2013