

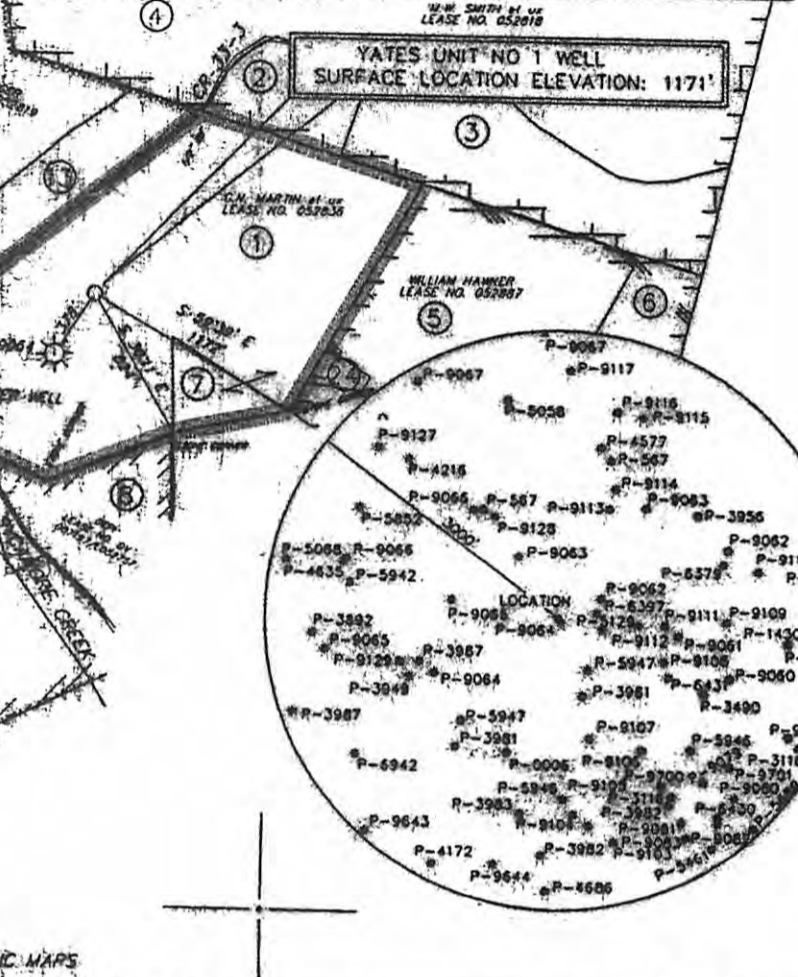
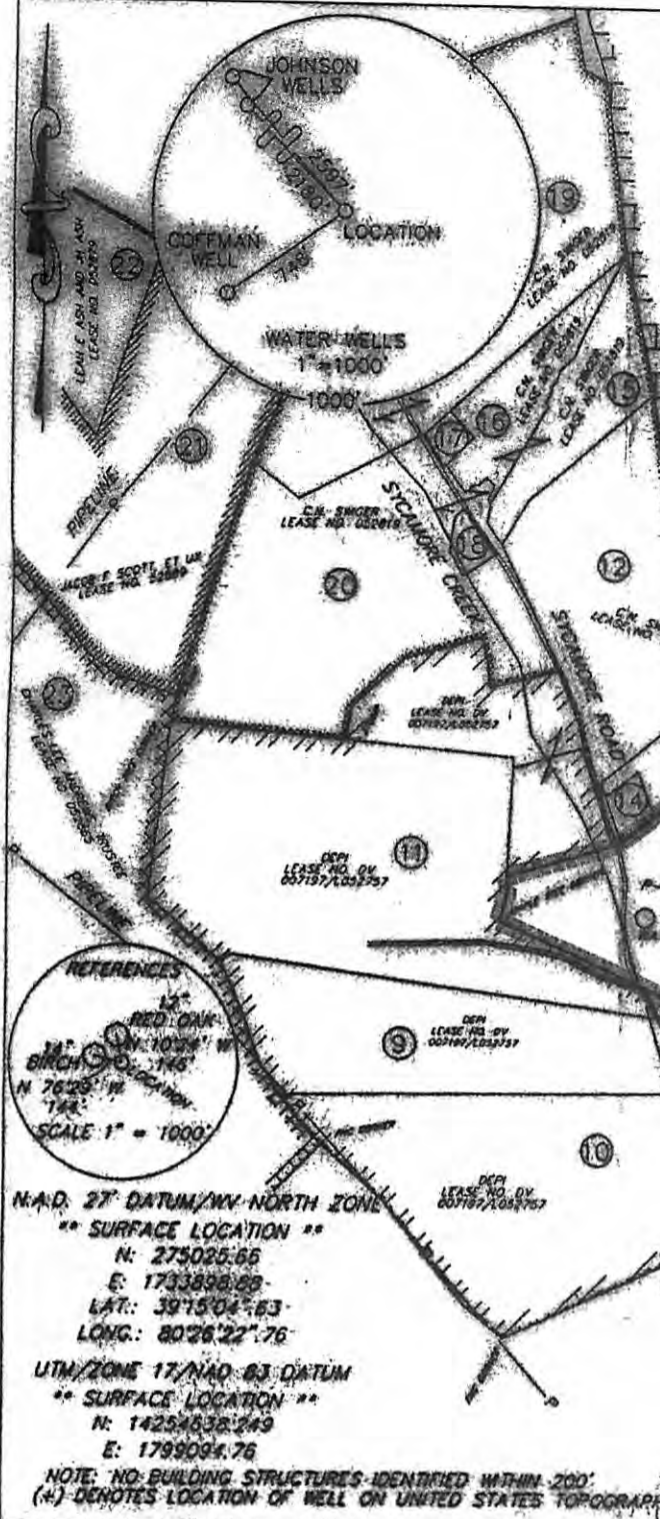
LATITUDE: 39°17'30"

6356'

LONGITUDE: 80°25'00"

14,774'

SURFACE TRACTS			
1	1	CALLED 66 1/4 ACRES	THELMA COFFMAN VOL. 83, PG. 0348 20-344-5
2	1	CALLED 5.25 ACRES	AUBREY C COFFMAN et al VOL. 1059, PG. 739 20-324-25.3
3	1	CALLED 26.84 ACRES	AUBREY C COFFMAN et al VOL. 925, PG. 40 20-324-25
4	1	CALLED 144.05 ACRES	M.W. SMITH et al VOL. 0235, PG. 0455 20-324-25.3
5	1	CALLED 61 1/2 ACRES	JOSEPH A STUTLER AND DELORES A STUTLER VOL. 1022, PG. 709 20-344-10
6	1	CALLED 6.50 ACRES	ANGELIA DONNA COCHRAN VOL. 1106, PG. 0014 20-344-1
7	1	CALLED 34.13 ACRES	THELMA COFFMAN VOL. 1059, PG. 632 20-344-5
8	1	CALLED 20.00 ACRES	FRANCIS L AND NANCY P. LOWE VOL. 1170, PG. 377 20-344-8
9	1	CALLED 28.21 ACRES	FRANCIS L AND NANCY P. LOWE VOL. 1343, PG. 1189 20-344-8
10	1	CALLED 67 ACRES	LAWRENCE E. BENNETT AND JAMIE ANN BENNETT VOL. 1017, PG. 729 20-344-17
11	1	SMALL	FRANCIS L AND NANCY P. LOWE VOL. 1343, PG. 1189 20-344-8
12	1	CALLED 49.39 ACRES	STEVEN AND CHRISTINA JOHNSON VOL. 1242, PG. 1180 20-344-5
13	1	CALLED 107 ACRES	LAWRENCE J. GIOVANNI et al VOL. 1055, PG. 63 20-344-24.2
14	1	CALLED 130 ACRES	SHEAMAN J. SNIDER AND ROBIN L. SNIDER VOL. 1382, PG. 1050 20-344-24.1
15	1	CALLED 810 ACRES	STEVEN AND CHRISTINA JOHNSON VOL. 1336, PG. 75 20-344-23.4
16	1	CALLED 7.37 ACRES	STEVEN AND CHRISTINA JOHNSON VOL. 1336, PG. 81 20-344-23.3
17	1	CALLED 6.812 ACRES	STEVEN AND CHRISTINA JOHNSON VOL. 1328, PG. 484 20-344-23.2
18	1	CALLED 1 ACRE	CHARLES W. JOHNSON et al VOL. 1180, PG. 113 20-344-23.1
19	1	CALLED 88.1 ACRES	ELIZABETH A. CROSS et al VOL. 1325, PG. 318 20-344-17
20	1	CALLED 82 ACRES	STEVEN AND CHRISTINA JOHNSON VOL. 1417, PG. 1050 20-344-25
21	1	CALLED 25.40 ACRES	SUSIE BURKHIDE AND SALLY VORE VOL. 731, PG. 674 20-344-22
22	1	CALLED 280 ACRES	WILLIAM C. ROST VOL. 77, PG. 257 20-344-21
23	1	CALLED 0.91 ACRES	CLARENCE SPERRY VOL. 504, PG. 321 20-344-1
24	1	CALLED 0.91 ACRES	BRET E. STUTLER VOL. 1143, PG. 0055 20-344-10.1



FILE # YATES UNIT 1 DGM  
 DRAWING # YATES UNIT 1  
 SCALE: 1"=1000'  
 MINIMUM DEGREE OF ACCURACY: 1 : 2500  
 PROVEN SOURCE OF ELEVATION: SPOT ELEVATION USGS WELL NO. 1 1171

I, THE UNDERSIGNED HEREBY CERTIFY THAT THIS PLAT IS CORRECT TO THE BEST OF MY KNOWLEDGE AND BELIEF AND SHOWS ALL THE INFORMATION REQUIRED BY LAW AND REGULATIONS ISSUED AND PRESCRIBED BY THE DEPARTMENT OF ENVIRONMENTAL PROTECTION.

SIGNED: [Signature]  
 R.P.E.: LL.S. 973



(+) DENOTES LOCATION OF WELL ON UNITED STATES TOPOGRAPHIC MAPS  
 WVDER  
 OFFICE OF OIL & GAS  
 601 57TH STREET  
 CHARLESTON, WV 25304

WELL TYPE:  OIL  WASTE DISPOSAL  PRODUCTION  DEEP  
 GAS  LIQUID INJECTION  STORAGE  SHALLOW

WATERSHED: WEST FORK  
 COUNTY/DISTRICT: HARRISON / UNION  
 SURFACE OWNER: THELMA COFFMAN  
 OIL & GAS ROYALTY OWNER: G.N. MARTIN et ux

DRILL  CONVERT  DRILL DEEPER  REDRILL  FRACTURE OR STIMULATE   
 PLUG OFF OLD FORMATION  PERFORATE NEW FORMATION  PLUG & ABANDON   
 CLEAN OUT & REPLUG  OTHER  (SPECIFY): \_\_\_\_\_

TARGET FORMATION: MARCELLUS SHALE  
 WELL OPERATOR ANTERO RESOURCES APPALACHIAN CORP.  
 ADDRESS 1625 17TH STREET  
 CITY DENVER STATE CO ZIP CODE 80202

DATE: JULY 12, 2010  
 OPERATOR'S WELL #: YATES UNIT 1  
 ARI WELL # 47 33 05463  
 STATE VA COUNTY PERMIT  
 WALKER & ASSOCIATES SURVEYING, INC.  
 1920 STUBBINS LANE - TYLER, TEXAS 75703  
 PHONE: 903-534-9000 FAX: 903-534-9816

ELEVATION: 1171'  
 QUADRANGLE: WOLF SUMMIT  
 ACREAGE: 66 1/4  
 ACREAGE: 68

ESTIMATED DEPTH 7100'  
 DESIGNATED AGENT CT CORPORATION SYSTEM  
 ADDRESS 707 VIRGINIA ST. EAST 15TH FLOOR  
 CITY CHARLESTON STATE WV ZIP CODE 25301



**CANCELLED**

04/1/2014