

LUCAS, VAN 15 E-7315 WELL
 TO BE PLUGGED
 ELEVATION: 356.62 METERS
 (UTM, NAD83)
 NORTHING: 4360446.31
 EASTING: 556669.69

STUDY AREA

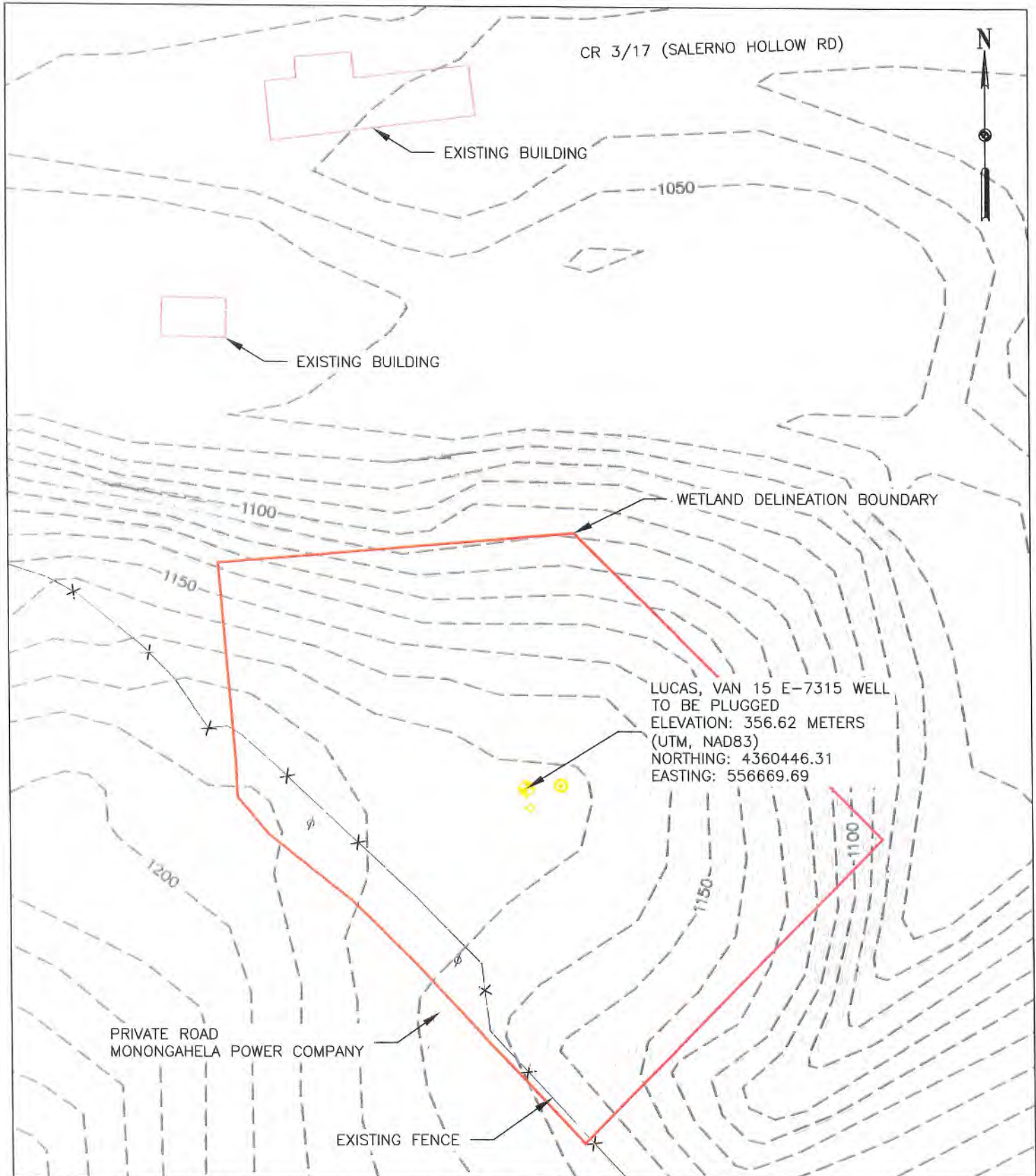
SCALES HORIZ: 1"=2000' VERT: CONTOUR INT: 20'	DESN BY: <u>SDG</u>	REV. BY: _____ DATE: _____ DESC.: _____
	DRWN BY: <u>SDG</u>	REV. BY: _____ DATE: _____ DESC.: _____
	RVWD BY: <u>MMV</u>	REV. BY: _____ DATE: _____ DESC.: _____
	FLD BK: _____	REV. BY: _____ DATE: _____ DESC.: _____
	BK PG: _____ DATE: <u>02/20/19</u>	REV. BY: _____ DATE: _____ DESC.: _____

Office of Oil and Gas
APR 17 2019

SHEET NUMBER:
 1 OF 1

USGS MAP - SHINNSTON QUADRANGLE
LUCAS, VAN 15 E-7315
 FOR: XTO ENERGY, INC.
 PRIVATE ROAD, EAGLE DISTRICT, HARRISON COUNTY, WEST VIRGINIA

WV Department of Environmental Protection
MORRIS KNOWLES & ASSOCIATES, INC.
 A HAMMONTREE COMPANY
 ENGINEERS, PLANNERS, SURVEYORS
 443 ATHENA DRIVE DELMONT, PA 15626
 PHN: (724) 468-4622 FAX: (724) 468-8940
 www.morrisknowles.com



SCALES HORIZ: 1"=100' VERT: CONTOUR INT: 2'	DESN BY: SDG DRWN BY: SDG RVWD BY: MMV FLD BK: BK PG: DATE: 02/20/19	REV. BY: _____ DATE: _____ DESC.: _____ REV. BY: _____ DATE: _____ DESC.: _____ REV. BY: _____ DATE: _____ DESC.: _____ REV. BY: _____ DATE: _____ DESC.: _____
---	---	--

SHEET NUMBER:
1 OF 1

TOPOGRAPHIC MAP
LUCAS, VAN 15 E-7315
 FOR: XTO ENERGY, INC.
 PRIVATE ROAD, EAGLE DISTRICT, HARRISON COUNTY, WEST VIRGINIA

MORRIS KNOWLES & ASSOCIATES, INC.
 A HAMMONTREE COMPANY
 ENGINEERS, PLANNERS, SURVEYORS

443 ATHENA DRIVE DELMONT, PA 15626
 PHN: (724) 468-4623 FAX: (724) 468-8940
 www.morrisknowles.com

Office of Oil and Gas
APR 17 2019
 WV Department of Environmental Protection