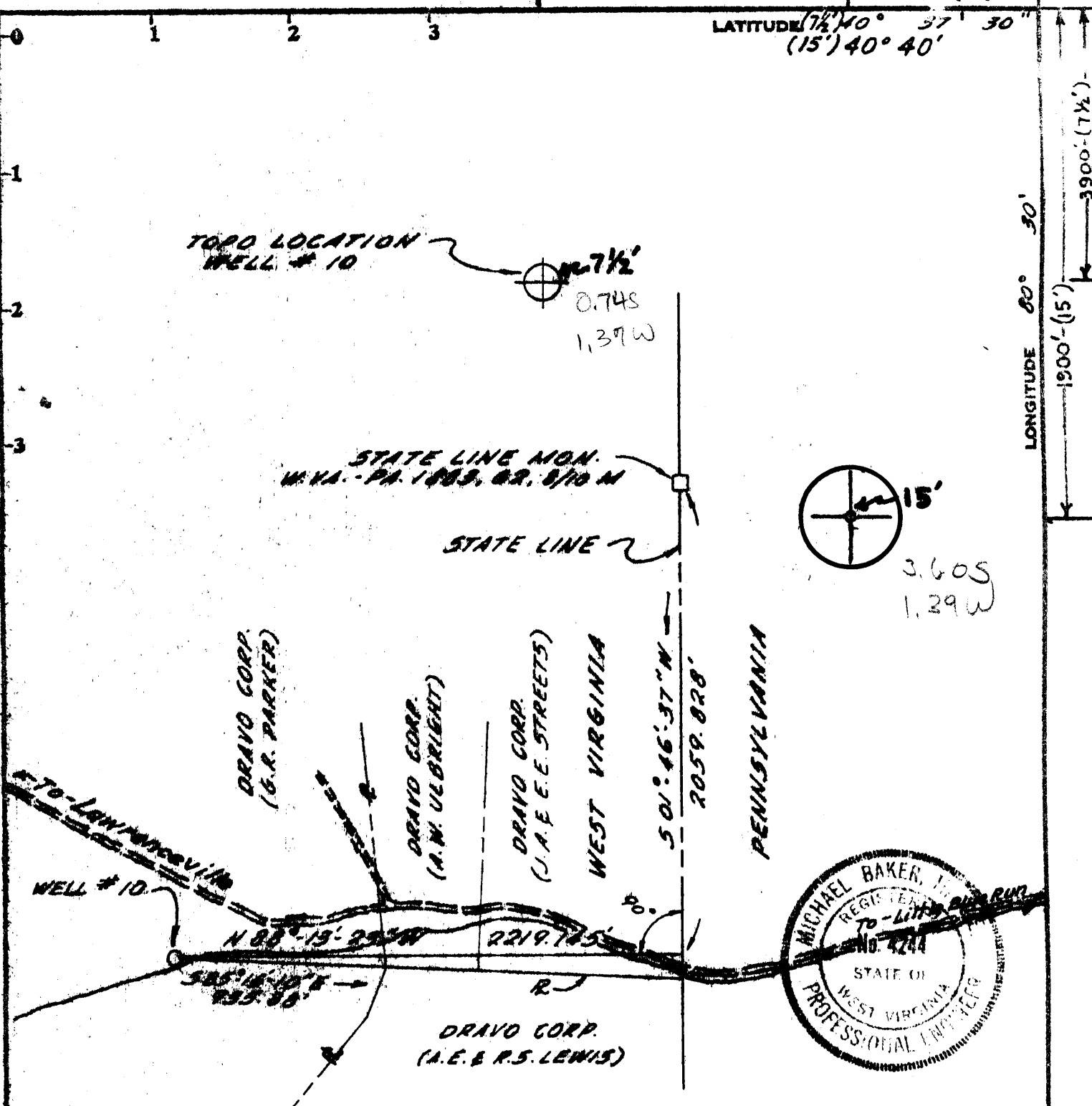


7500' (7 1/2')

730' (15')

LATITUDE (7 1/2)' 40° 37' 30"  
(15)' 40° 40'

LONGITUDE 80° 30' 30"  
1900' (15')



Minimum Error of Closure 1:10,000  
 Source of Elevation U.S.G.S. BM. TT 19 BR 1952-1149"  
EL. 1149.303 (1929 SEA LEVEL DATUM)

I, the undersigned, hereby certify that this map is correct to the best of my knowledge and belief and shows all the information required by paragraph 6 of the rules and regulations of the oil and gas section of the mining laws of West Virginia.

Signed: [Signature]  
 Squares: N S E W

- Fracture
- New Location
- Drill Deeper
- Abandonment  Issued 4/4/74 Map No.

Company	<u>DRAYO CORPORATION</u>		
Address	<u>NEVILLE 15, PGH. PA. 15225</u>		
Farm	<u>(G.R. PARKER) Little Blue Run Development Area</u>		
Tract	Acres	Lease No.	
	<u>91</u>		
Well (Farm) No.	<u>10</u>	Serial No.	
Elevation (Spirit Level)	<u>GR-995.42</u>		
Quadrangle	<u>WELLSVILLE-15 SOUTH-7 1/2 Series</u>		
County	District		
<u>HANCOCK</u>	<u>GRANT</u>		
Engineer	<u>MICHAEL BAKER, III</u>		
Engineer's Registration No.	<u>W. VA. 4244</u>		
File No.	Drawing No.		
Date	<u>FEB. 26, 1974</u> Scale <u>1" = 600'</u>		

STATE OF WEST VIRGINIA  
 DEPARTMENT OF MINES  
 OIL AND GAS DIVISION  
 CHARLESTON

WELL LOCATION MAP  
 FILE NO. Ham-170-A

+ Denotes location of well on United States Topographic Maps, scale 1 to 62,500, latitude and longitude lines being represented by border lines as shown.  
 - Denotes one inch spaces on border line of original tracing.  
47-029