

40°37'30"

Latitude

80°32'30"

Longitude

+-----+
 | .93s |
 | 1.42w |
 +-----+

Topo Location

7.5' Loc. _____ **15' Loc.** _____
 _____ (calc.) _____

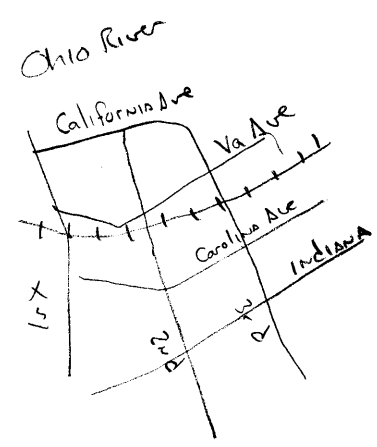
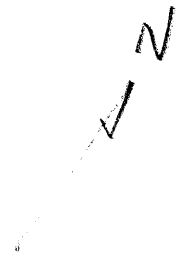
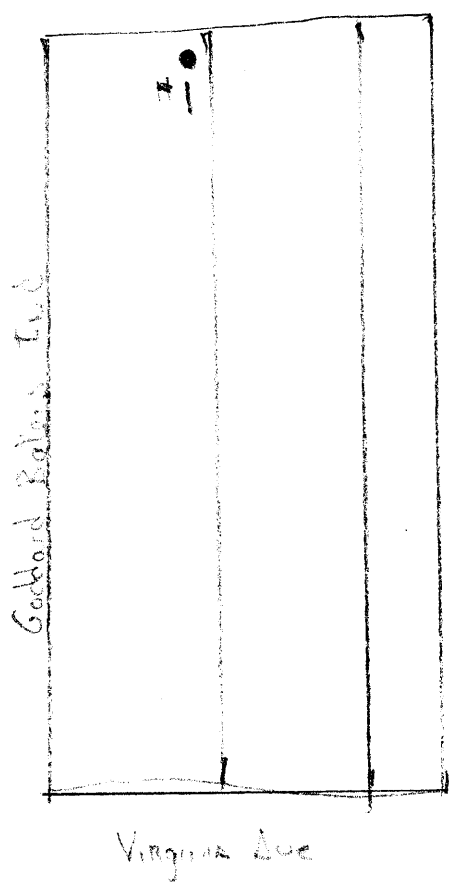
Company Goddard Bakens Inc
Farm Lot of Goddard Bakens Inc #1
15' Quad _____
 (sec.)
7.5' Quad East Liverpool South
District Grant

WELL LOCATION PLAT

County 029 **Permit** 30155

40°45'

80°30'



OP. Goddard Bakers Inc
 Farm Lot of Goddard Bakers Inc

0.5 ac.

Well #1

Grant dist

in Chester 155A