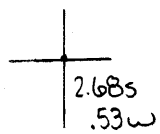


40°37'30"

Latitude

80°37'30"

Longitude



**Topo Location**

7.5' Loc. \_\_\_\_\_ 15' Loc. \_\_\_\_\_  
 \_\_\_\_\_ (calc.) \_\_\_\_\_

**Company** Bradford Supply Corp

**Farm** Walter Hewitt # 11

**15' Quad** \_\_\_\_\_  
(sec.)

**7.5' Quad** Wellsville

**District** Grant

**WELL LOCATION PLAT**

**County** 029 **Permit** 30086

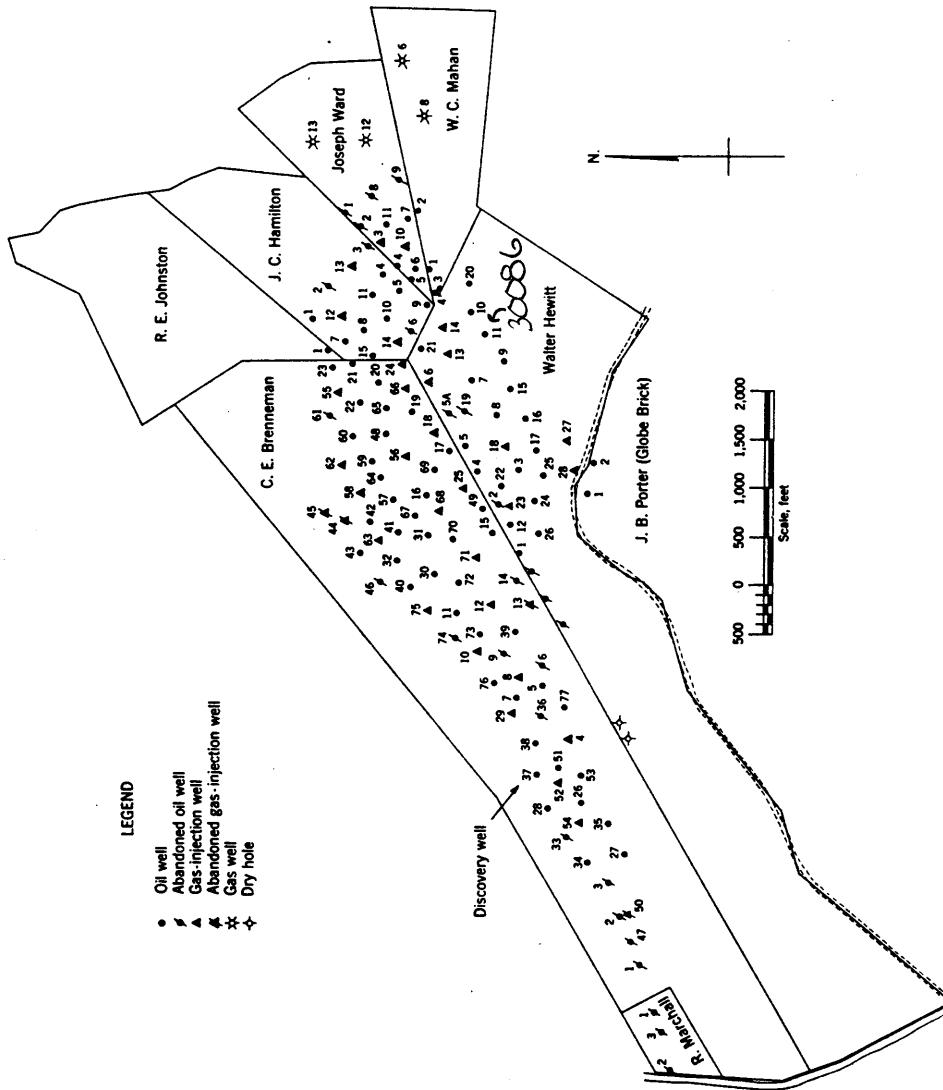
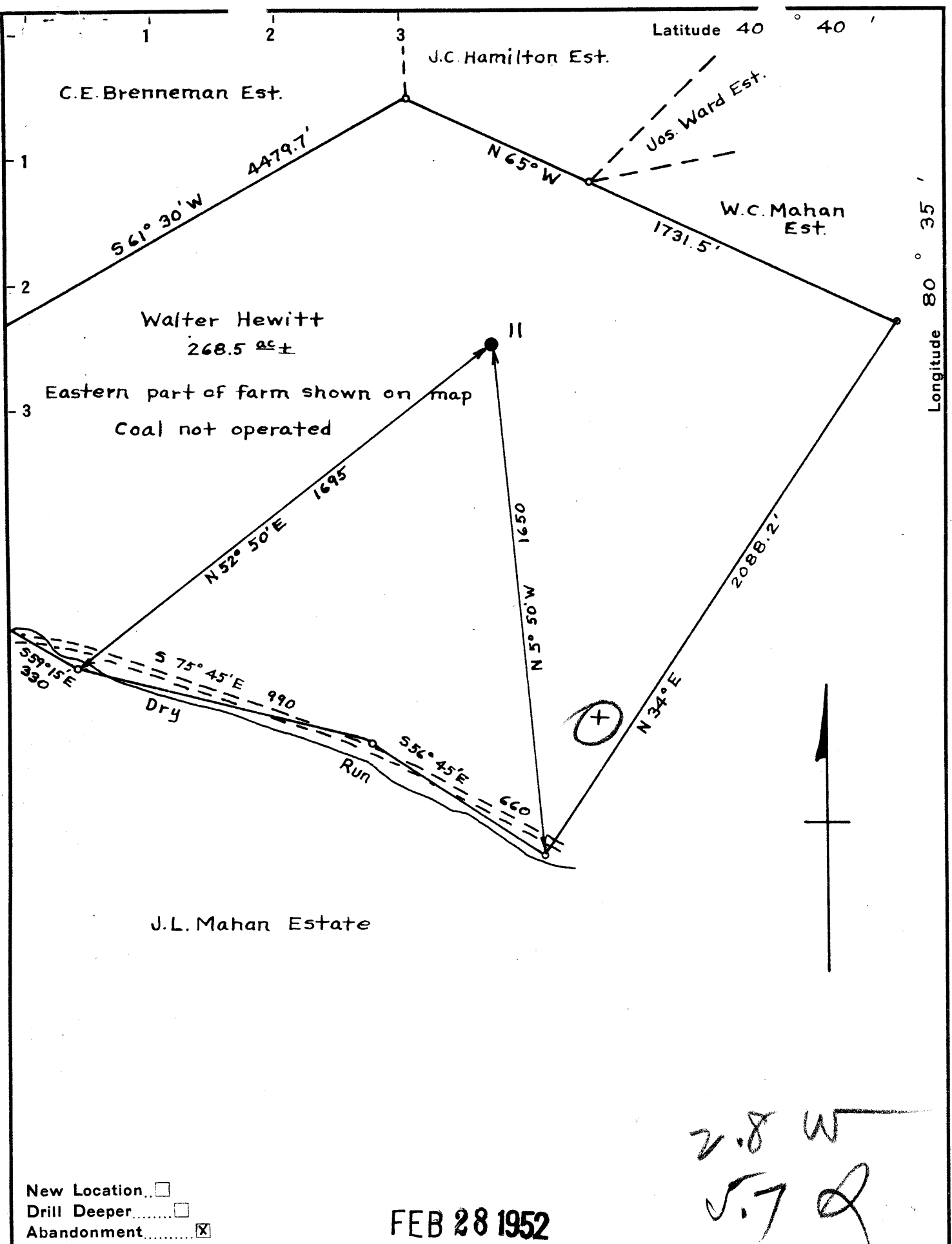


Figure 1. - Ownership map of Brennenman field, Hancock County, W. Va., showing location and status of wells on December 31, 1948.



FEB 28 1952

New Location   
 Drill Deeper   
 Abandonment

Company Dunnmar Oil & Gas Co.  
Bradford Supply Co.  
 Address Bradford Pa.  
 Farm Walter Hewitt  
 Tract One Acres 268.5± Lease No. \_\_\_\_\_  
 Well (Farm) No. 11 Serial No. \_\_\_\_\_  
 Elevation (Spirit Level) 1105'  
 Quadrangle Wellsville  
 County Hancock District Grant  
 Engineer \_\_\_\_\_  
 Engineer's Registration No. \_\_\_\_\_  
 File No. \_\_\_\_\_ Drawing No. \_\_\_\_\_  
 Date 9-12-51 Scale 1" = 400'

STATE OF WEST VIRGINIA  
 DEPARTMENT OF MINES  
 OIL AND GAS DIVISION  
 CHARLESTON

WELL LOCATION MAP  
 FILE NO. HAN-86-A

+ Denotes location of well on United States Topographic Maps, scale 1 to 62,500, latitude and longitude lines being represented by border lines as shown.

- Denotes one inch spaces on border line of original tracing.

B.F.H., Jr.

WALTER HEWITT NO. 11 — DUNN-MAR OIL & GAS CO. — BRADFORD SUPPLY CO. — 6-6 (COI) HAN-86-A

WALTER HEWITT NO. 11 WELL.

Grant District, Hancock County, W. Va.  
By Dunn-Mar Oil & Gas Co., Waynesburg, Pa.  
Abandoned under permit Han-.....-A?  
On 268 acres, on Dry Run.  
Elevation, 1105' L.  
Date of completion, etc., not given.  
Shot at 999-1006'.  
1 joint 10" conductor; 6 $\frac{1}{4}$ " casing, 755'.  
Oil well. Record to Dept. of Mines stamped Setp. 20, 1951.  
Record to RCT from Mrs. Griffith Jan. 16, 1952. Old File No. 45.

	Top.	Bottom.
Big Injuna Sand	705	- 740
Berea Sand (pay, 999-1006')	990	- ...
Total depth		1047



STATE OF WEST VIRGINIA  
DEPARTMENT OF MINES  
OIL AND GAS DIVISION

45

WELL RECORD

Permit No. HAN-80-A

Oil or Gas Well X (KIND)

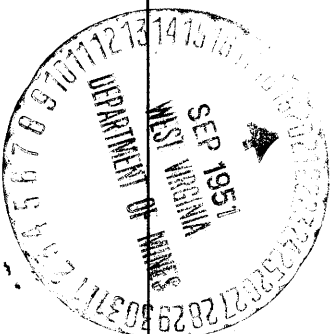
Company Dunn-War Oil & Gas Company  
 Address Waynesburg, Pa  
 Farm Walter Hewitt Acres 268  
 Location (waters) Dry Run  
 Well No. 11 Elev. 1105'  
 District Grant County Hancock  
 The surface of tract is owned in fee by \_\_\_\_\_  
 Address \_\_\_\_\_  
 Mineral rights are owned by \_\_\_\_\_  
 Address \_\_\_\_\_  
 Drilling commenced \_\_\_\_\_  
 Drilling completed \_\_\_\_\_  
 Date Shot \_\_\_\_\_ From 999 To 1006'  
 With \_\_\_\_\_  
 Open Flow \_\_\_\_\_ /10ths Water in \_\_\_\_\_ Inch  
 \_\_\_\_\_ /10ths Merc. in \_\_\_\_\_ Inch  
 Volume \_\_\_\_\_ Cu. Ft.  
 Rock Pressure \_\_\_\_\_ lbs. \_\_\_\_\_ hrs.  
 Oil \_\_\_\_\_ bbls., 1st 24 hrs.  
 Fresh water \_\_\_\_\_ feet \_\_\_\_\_ feet  
 Salt water \_\_\_\_\_ feet \_\_\_\_\_ feet

Casing and Tubing	Used in Drilling	Left in Well	Packers
Size			
16			Kind of Packer
13			
10	<u>1 joint Conductor (10")</u>		Size of
8 1/4			
6 5/8	<u>6-1/4"</u>	<u>755</u>	Depth set
5 3/16		<u>755</u>	
3			Perf. top
2			Perf. bottom
Liners Used			Perf. top
			Perf. bottom

CASING CEMENTED \_\_\_\_\_ SIZE \_\_\_\_\_ No. Ft. \_\_\_\_\_ Date \_\_\_\_\_

COAL WAS ENCOUNTERED AT \_\_\_\_\_ FEET \_\_\_\_\_ INCHES  
 \_\_\_\_\_ FEET \_\_\_\_\_ INCHES FEET \_\_\_\_\_ INCHES  
 \_\_\_\_\_ FEET \_\_\_\_\_ INCHES FEET \_\_\_\_\_ INCHES

Formation	Color	Hard or Soft	Top	Bottom	Oil, Gas or Water	Depth Found	Remarks
Injun			705	740			
Top Berea			990				
Top Pay			999				
Bottom of Pay				1006			
Bottom Hole				1017			



JAN 16 1952