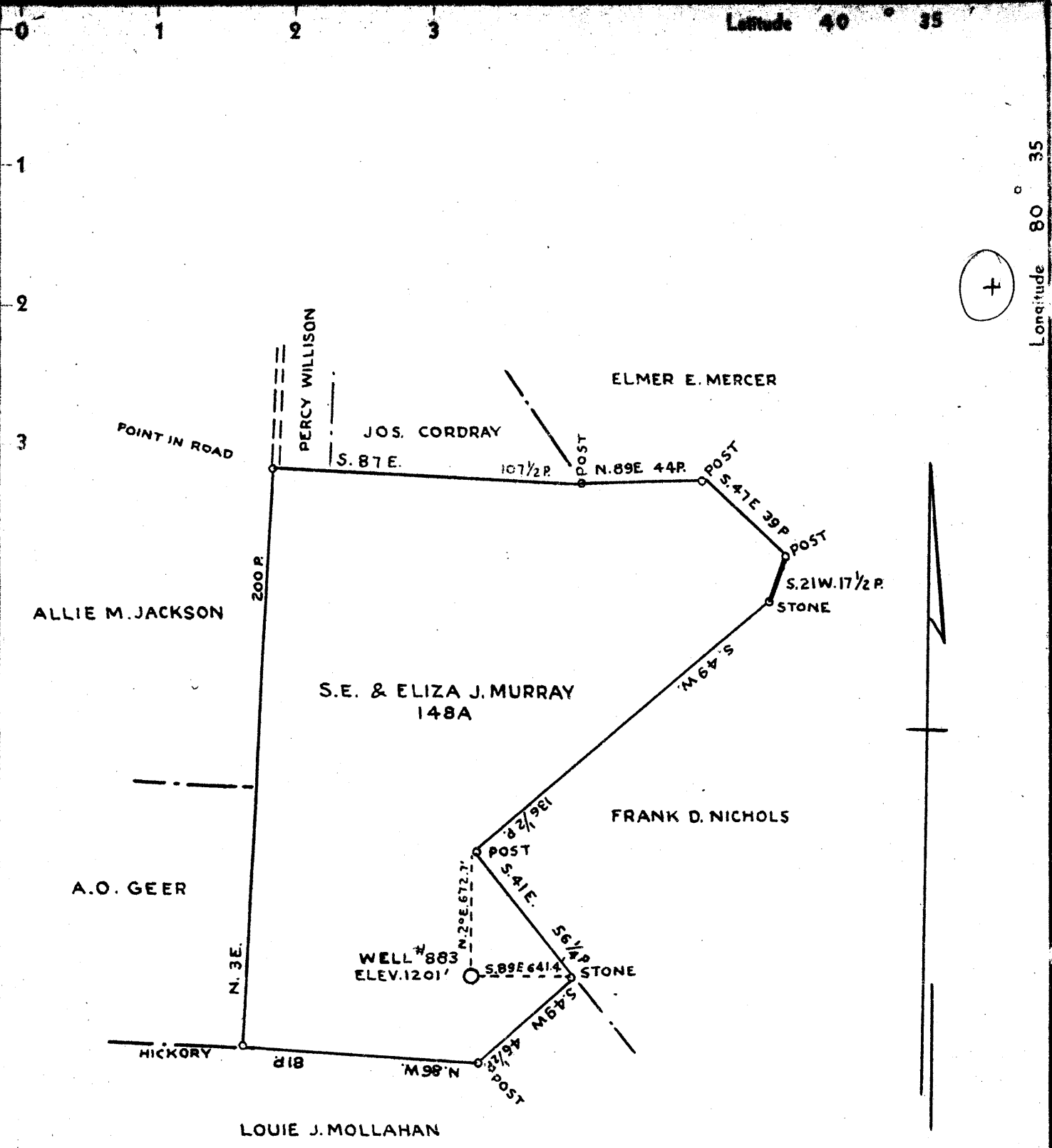
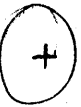




Latitude 40 35

Longitude 80 35



COAL OWNED BY ELIZA J. MURRAY

- New Location...
- Drill Deeper.....
- Abandonment.....

W- .4  
S- 2.1

Company THE MANUFACTURERS LIGHT AND HEAT CO.  
 Address 800 UNION TRUST BLD'G. PITTSBURGH PA.  
 Farm S.E. AND ELIZA J. MURRAY  
 Tract \_\_\_\_\_ Acres 148 Lease No. 2830  
 Well (Farm) No. 2 Serial No. 883  
 Elevation (Spirit Level) 1201'  
 Quadrangle WELLSVILLE S.E. 1/4  
 County HANCOCK District CLAY (POE)  
 Engineer *J. Lawrence*  
 Engineer's Registration No. \_\_\_\_\_  
 File No. \_\_\_\_\_ Drawing No. Y-10-38  
 Date MARCH -17- 1941 Scale 1" = 800'

STATE OF WEST VIRGINIA  
 DEPARTMENT OF MINES  
 OIL AND GAS DIVISION  
 CHARLESTON

WELL LOCATION MAP  
 File No. HAN-46A

+ Denotes location of well on United States Topographic Maps, scale 1 to 62,500, latitude and longitude lines being represented by border lines as shown.  
 - Denotes one inch spaces on border line of original tracing.

6-6

(003)

WEST VIRGINIA DEPARTMENT OF MINES  
OIL AND GAS DIVISION

78

Ab 76-A

WELL RECORD

Permit No. Drilled in 1906

Oil or Gas Well Gas  
(Kind)

Company The Manufacturers Light & Heat Co.  
 Address 800 Union Trust Bldg., Pittsburgh, Pa.  
 Farm Ed Murray Acres 118  
 Location (waters) \_\_\_\_\_  
 Well No. 2 - 883 Elev. 1201 ft  
 District Pos New Clay County Hancock  
 The surface of tract is owned in fee by Eliza J Murray  
RD 3, New Cumberland, Address W. Va.  
 Mineral rights are owned by The M. L. & H. Co.  
800 Union Trust Bldg. Address Pittsburgh, Pa.  
 Drilling commenced Dec. 8th, 1906  
 Drilling completed Jan. 9th, 1907  
 Date shot \_\_\_\_\_ Depth of shot \_\_\_\_\_  
 Open Flow /10ths Water in \_\_\_\_\_ Inch  
 \_\_\_\_\_ /10ths Merc. in \_\_\_\_\_ Inch  
 Volume \_\_\_\_\_ Cu. Ft.  
 Rock Pressure \_\_\_\_\_ lbs. \_\_\_\_\_ hrs.  
 Oil \_\_\_\_\_ bbls., 1st 24 hrs.  
 Fresh water \_\_\_\_\_ feet \_\_\_\_\_ feet  
 Salt water \_\_\_\_\_ feet \_\_\_\_\_ feet

Casing and Tubing	Used in Drilling	Left in Well	Packers
Size			
16			Kind of Packer
13			
10			Size of
8 1/4		283	
6 5/8			Depth set
5 3/16			
3			Perf. top
2			Perf. bottom
Liners Used			Perf. top
			Perf. bottom

CASING CEMENTED \_\_\_\_\_ SIZE \_\_\_\_\_ No. FT. \_\_\_\_\_ Date \_\_\_\_\_  
 COAL WAS ENCOUNTERED AT \_\_\_\_\_ FEET \_\_\_\_\_ INCHES  
 \_\_\_\_\_ FEET \_\_\_\_\_ INCHES \_\_\_\_\_ FEET \_\_\_\_\_ INCHES  
 \_\_\_\_\_ FEET \_\_\_\_\_ INCHES \_\_\_\_\_ FEET \_\_\_\_\_ INCHES

Formation	Color	Hard or Soft	Top	Bottom	Oil Gas or Water	Depth Found	Remarks
Clay			0	12			
Slate & Shell			12	219	Water 203 ft.		
Sand & Slate			219	335	Water 222 ft.		
Slate & Lime			335	462	Cased off at 283 ft.		
Salt Sand			462	527			
Slate			527	687			
Big Injun			687	727			
Slate & Lime			727	992			
Black Slate			992	1033			
Berea Sand			1033	1050			

