

40°35'00"

Latitude

80°30'00"

.77s
1.78w

Longitude

Topo Location

7.5' Loc. _____ 15' Loc. _____
 _____ (calc.) _____

Company CA Smith

Farm CA Smith # 3

15' Quad _____
(sec.)

7.5' Quad East Liverpool South

District Grant

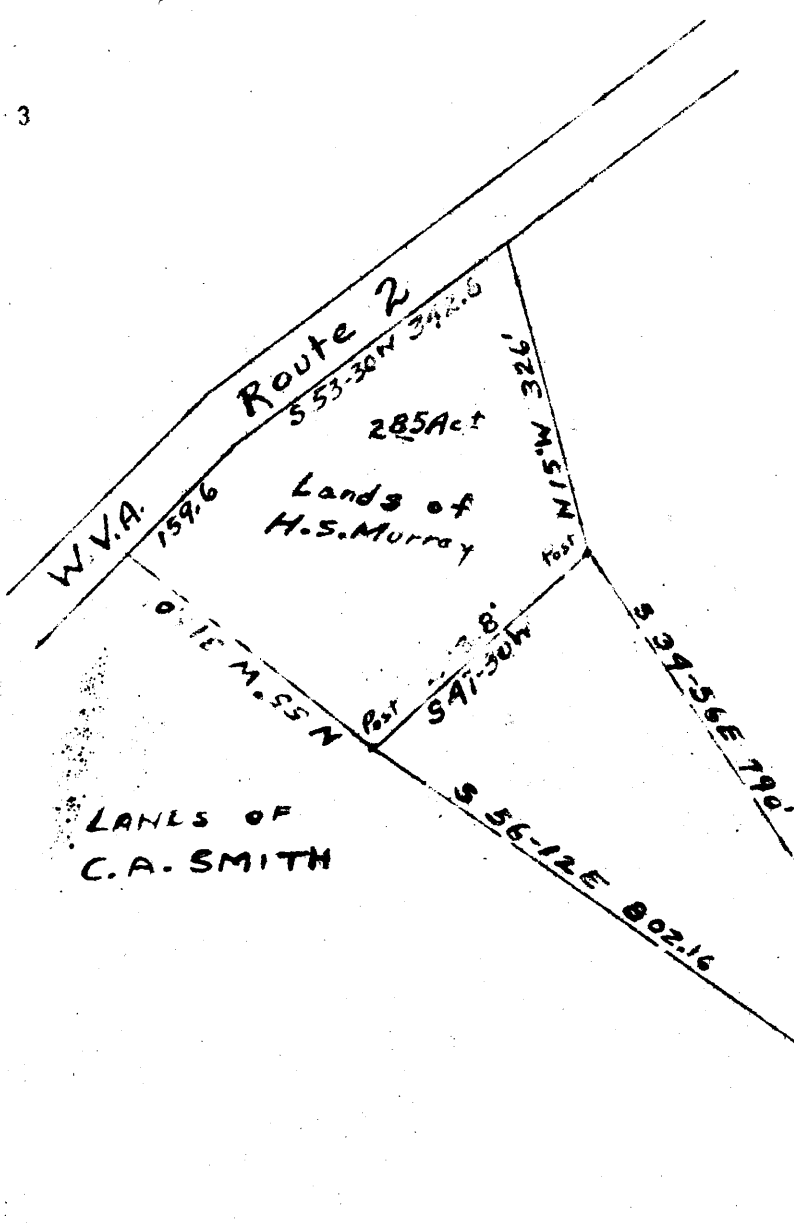
WELL LOCATION PLAT

County 029 **Permit** 57

Latitude 40° 35'

Longitude 80° 30'

+
0.735
1.80W



LANDS OF
C.A. SMITH

Proposed Well # 3
Elev. 1093.0

New Location
Drill Deeper
Abandonment

Company C. A. SMITH
 Address CHESTER, W. VA
 Farm C. A. Smith
 Tract _____ Acres _____ Lease No. _____
 Well (Farm) No. _____ Serial No. _____
 Elevation (Spirit Level) 1093.0
 Quadrangle Wellsville
 County Hancock District Grant
 Engineer George S Bloomgren
 Engineer's Registration No. 540 (Ohio)
 File No. _____ Drawing No. _____
 Date Oct. 14-1947 Scale 1" = 200'

STATE OF WEST VIRGINIA
DEPARTMENT OF MINES
OIL AND GAS DIVISION
CHARLESTON

WELL LOCATION MAP
FILE NO. HAN-57

+ Denotes location of well on United States Topographic Maps, scale 1 to 62,500, latitude and longitude lines being represented by border lines as shown.

- Denotes one inch spaces on border line of original tracing.

WEST VIRGINIA DEPARTMENT OF MINES
OIL & GAS DIVISION
W E L L R E C O R D

Permit No. Han 57		Gas Well
Wellsville Quad.		CASING & TUBING
Company	C.A. Smith	
Address	Chester, W.Va.	10 20 None
Farm	C.A. Smith A	8 1/2 197 None
Location	Tomilson Run	6 5/8 685 685
Well No.	3	
	Elev. 1093	
District	Grant County Hancock	Coal at 34'
Surface	C.A. Smith, Chester, W.Va.	
Mineral	Same	
Commenced	June 20, 1948	
Completed	July 4, 1948	
Date shot	Aug. 6, 1948	Depth 955' to 960'
	with nitroglycerin (ONE)	
Open flow	6038	
Rock Pressure	90 lbs. 24 hrs.	
Fresh Water	70'; 74'; 200-268 4 bailer pr hr)	
No salt water		

Clay	Bl	S	0	24
Shale	Bl	S	24	34
Coal	Blk	S	34	36
Shale	Bl	S	36	70
Shell	Gr	H	70	74
Shale	Red	H	74	76
Shale	Gr	H	76	80
Sand	Lt	M	80	115
Shale	Bl	M	115	125
Sand	Lt	H	125	140
Shale	Gr	H	140	145
Sand	Lt	M	145	170
Shale	Gr	M	170	175
Sand	Wh	H	175	193
Shale	Bl	M	193	200
Shale	Sandy	S	200	268
Shale	Blk	M	268	280
Shale	Gr	M	280	290
Shale	Bl	M	290	300
Shale	Sandy	S	300	375
Sand	Wh	H	375	385
Shale	Sandy	M	385	430
Shell	Sandy	H	430	435
Shale	Gr	M	435	480
Shale & Shell		M	480	520
Shale	Blk	H	520	540
Shale	Gr	H	540	545
Shale	Blk	H	545	565
Sand	Wh	H	565	587
Shale	Gr	M	587	600
Shale	Bl	M	600	620
Shale	Gr	M	620	630
Sand	Gr	H	630	635
Shale	Gr	M	635	655
Shale	Gr	H	655	665
Shale	Lt	Sandy	665	680
Shale	Lt	M	680	695
Sand	Lt	M	695	700
Shale	Gr	H	700	725
Sand	Lt	M	725	730
Shale & Shell	Sandy		730	870
Shale	Gr	M	870	890
Shell	Gr	H	890	895
Shale	Bl	H	895	905
Sand	Wh	M	905	910
Shale	Bl	M	910	927
Shale	Blk	M	927	947
Sand	Berea	H	947	955
Sand	Coarse	S	955	962
Sand	Coarse	H	962	985

Gas 955-962