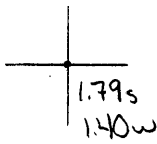


Latitude

Longitude



Topo Location

7.5' Loc. _____ 15' Loc. _____
 _____ (calc.) _____

Company Paul McCoy & Co

Farm Emma J Casson #1

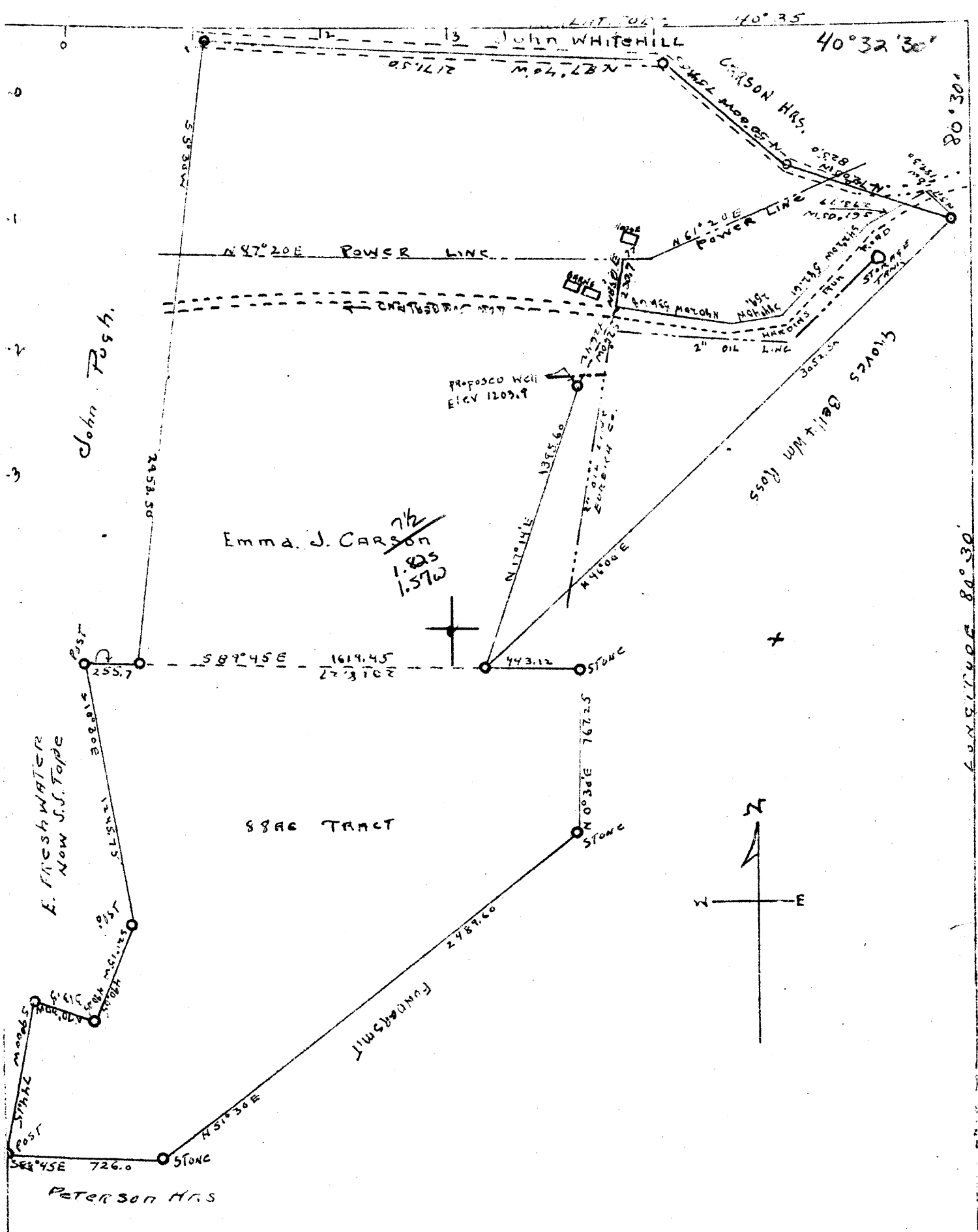
15' Quad _____
(sec.)

7.5' Quad East Liverpool South

District Clay

WELL LOCATION PLAT

County 029 Permit 54



COMPANY - PAUL M'COY + CO.
 ADDRESS - NEW CUMBERLAND
 FARM - EMMA J. CARSON
 TRACT - 2.5 AC. LEASE
 WELL - No. 1
 QUADRANGLE - Wellsville^{SE}, E. Liverpool South
 COUNTY - Hancock
 DIST. - Clay
 ENGINEER - WALTER D. HAHN
 ENGINEER'S REGISTRATION - 828
 DATE. JUNE 11, 1946 - Scale 1-in=600'

STATE OF WEST VIRGINIA
 DEPT. OF MINES
 OIL & GAS DIVISION
 WELL LOCATION MAP
 FILE NO. HAN-54
 + Denotes location of Well on U.S. Topographic Maps, Scale 1-in=62,500. Latitude & Longitude Lines being represented by Dotted Lines as shown.
 - Denotes 1-inch spaces on border of original tracing