

Latitude

40° 31' 30"

80° 31' 30"

Longitude

2445
.052

Topo Location

7.5' Loc. _____ 15' Loc. _____
(calc.) _____

Company Dunn-MAR 016

Farm Joseph WARA #15

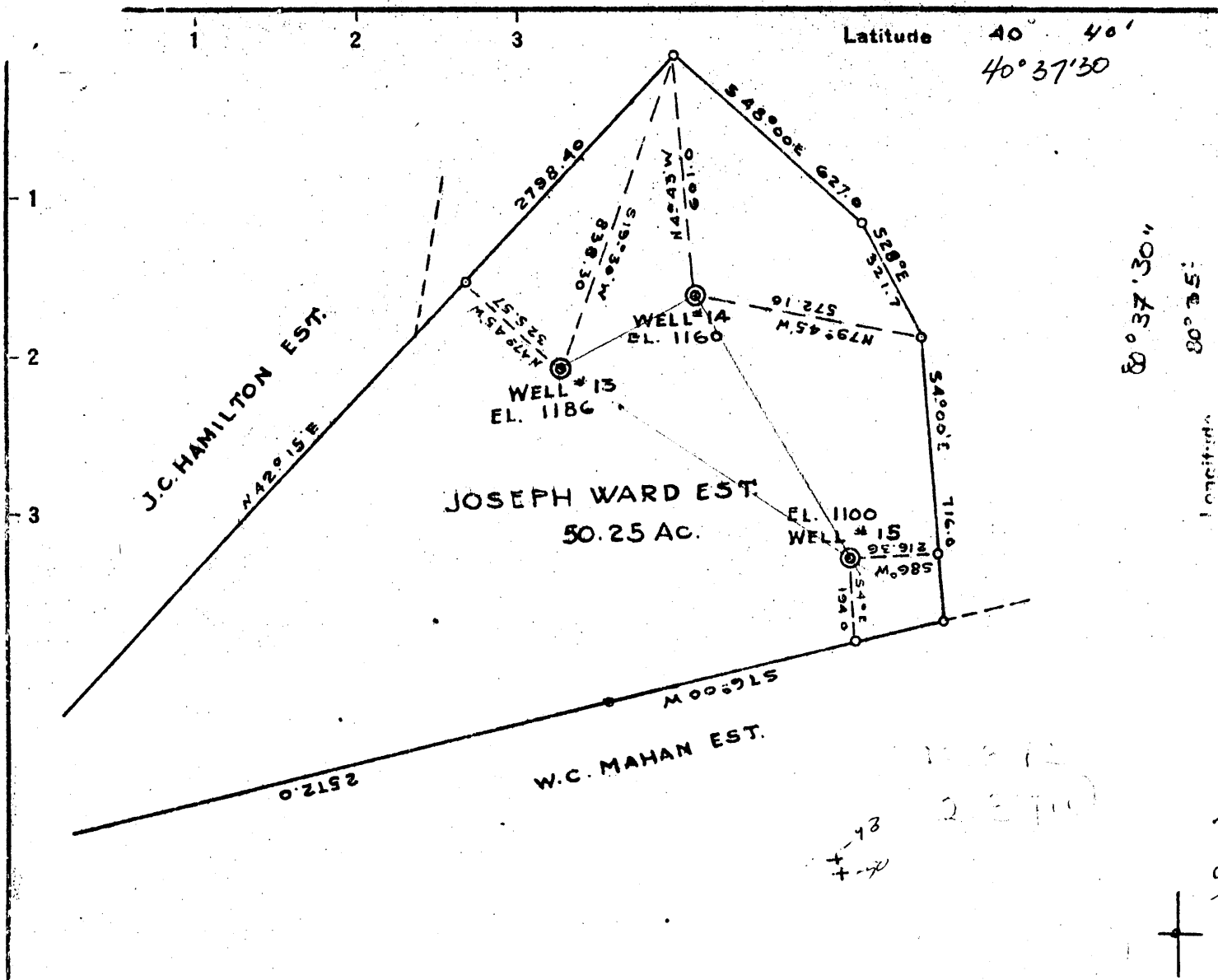
15' Quad Wellsville C
(sec.)

7.5' Quad East Liverpool South

District GRANT

WELL LOCATION PLAT

County 029 Permit 50



New Location
 Drill Deeper
 Abandonment

48 ABD
10/51

Company	DUNN-MAR OIL & GAS CO
Address	260 W. WAYNE ST. WAYNESBURG PENNA
Farm	JOSEPH WARD
Tract	Acres 50.25 Lease No. _____
Well (Farm) No.	13-14-15 Serial No. _____
Elevation (Spirit Level)	_____
Quadrangle	WELLSVILLE
County	HANCOCK District GRANT
Engineer	Frank Lepora
Engineer's Registration No.	1124
File No.	Drawing No. _____
Date	6/13/45 Scale 1" = 400'

STATE OF WEST VIRGINIA
 DEPARTMENT OF MINES
 OIL AND GAS DIVISION
 CHARLESTON

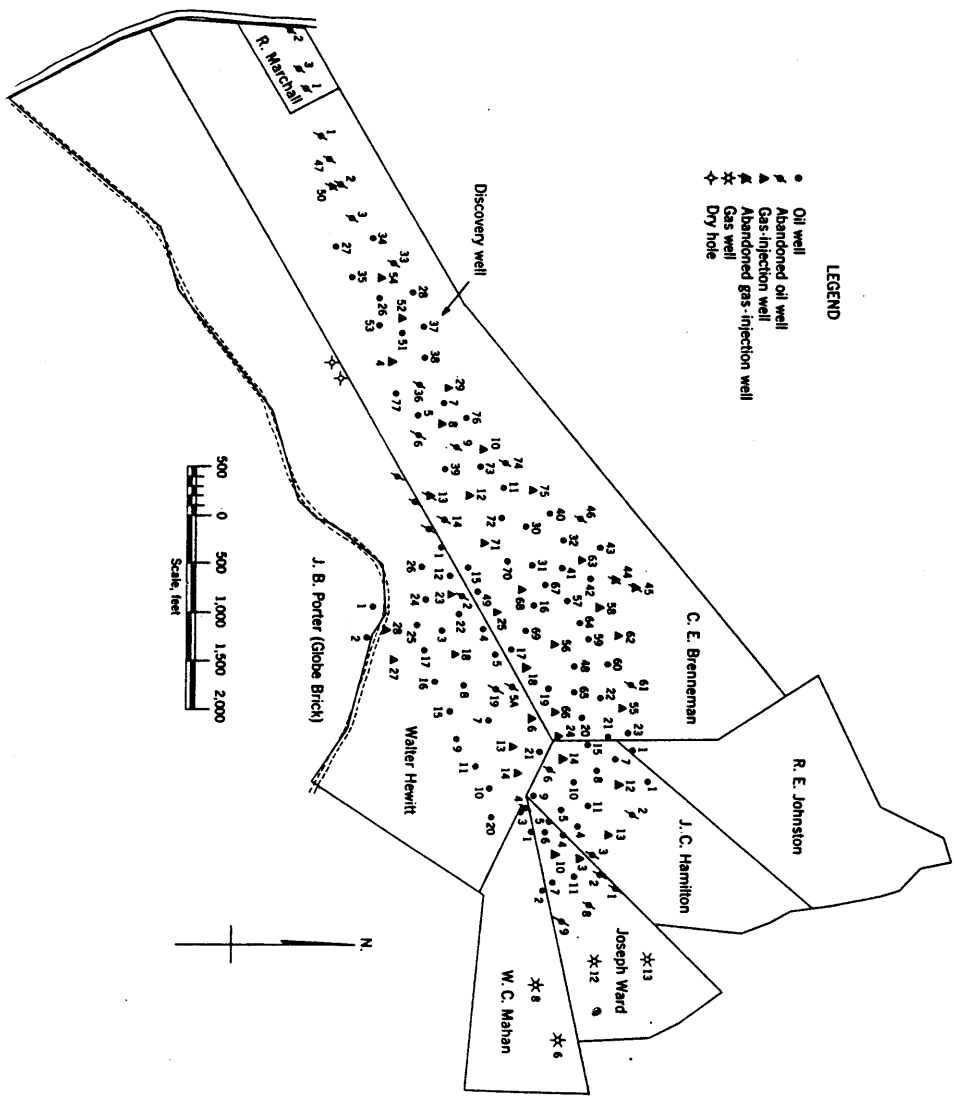
WELL LOCATION MAP

FILE NO HAN-48-713 ✓
 HAN-49-714
 HAN-50-15

+ Denotes location of well on United States Topographic Maps, scale 1 to 62,500, latitude and longitude lines being represented by border lines as shown.

- Denotes one inch spaces on border line of original tracing.

Figure 1. - Ownership map of Brenneman field, Hancock County, W. Va., showing location and status of wells on December 31, 1948.



- LEGEND
- Oil well
 - ▲ Abandoned oil well
 - Gas-injection well
 - △ Abandoned gas-injection well
 - * Gas well
 - ⊕ Dry hole

