

Latitude

40° 31' 30"

80° 37' 30"

Longitude

2.30s
.10w

Topo Location

7.5' Loc. 2.19s 15' Loc. _____
.04W (calc.) _____

Company Dunn-Mar OEG

Farm Joseph Ward 14

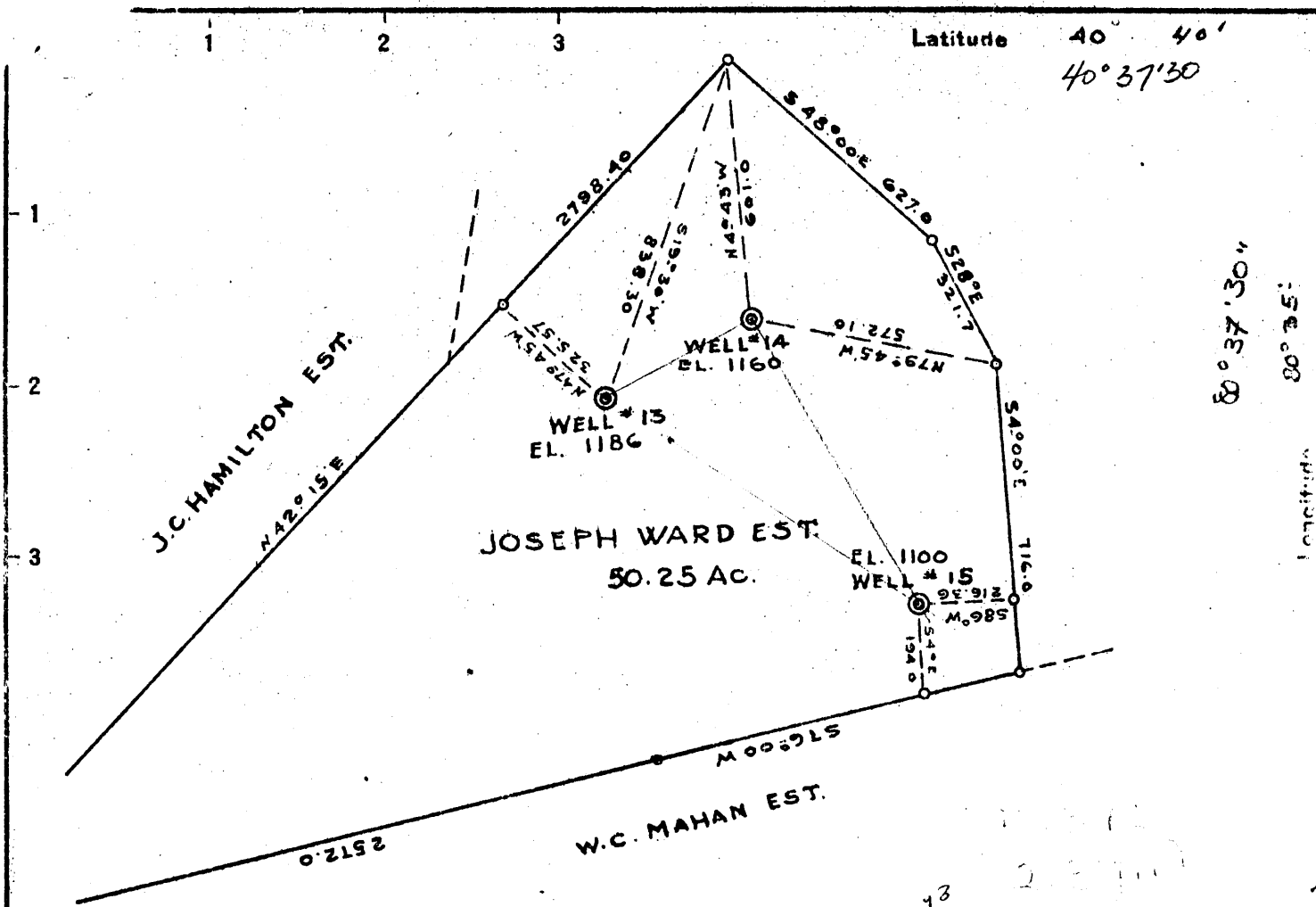
15' Quad Wellsville C
(sec.)

7.5' Quad Wellsville

District Grand

WELL LOCATION PLAT

County 029 Permit 49



48 ABD
10/51

New Location
 Drill Deeper
 Abandonment

| | |
|-----------------------------|-----------------------------------|
| Company | DUNN-MAR OIL & GAS CO |
| Address | 260 W. WAYNE ST. WAYNESBURG PENNA |
| Farm | JOSEPH WARD |
| Tract | Acres 50.25 Lease No. |
| Well (Farm) No. | 13-14-15 Serial No. |
| Elevation (Spirit Level) | |
| Quadrangle | WELLSVILLE |
| County | HANCOCK District GRANT |
| Engineer | Frank Lepora |
| Engineer's Registration No. | 1124 |
| File No. | Drawing No. |
| Date | 6/13/45 Scale 1" = 400' |

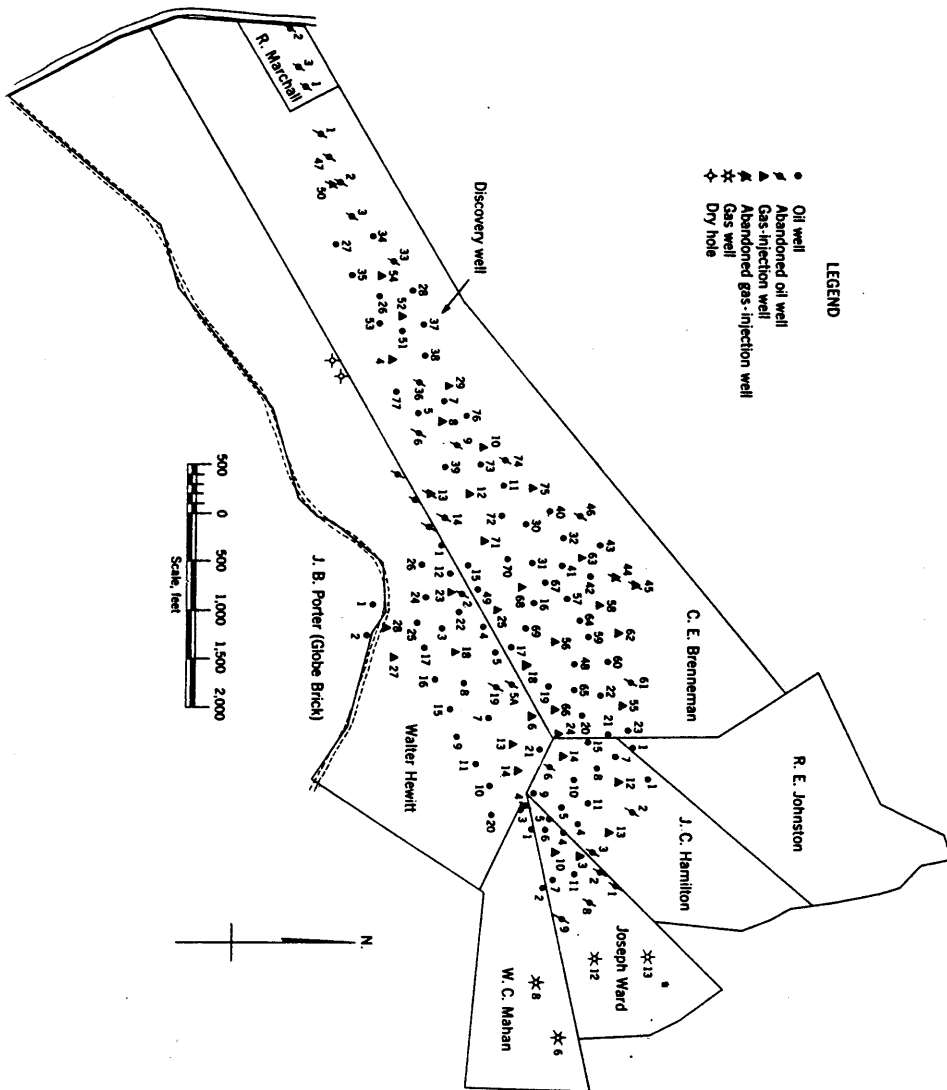
STATE OF WEST VIRGINIA
 DEPARTMENT OF MINES
 OIL AND GAS DIVISION
 CHARLESTON

WELL LOCATION MAP
 FILE NO HAN-48-13 ✓
 HAN-49-14
 HAN-50-15

+ Denotes location of well on United States Topographic Maps, scale 1 to 62,500, latitude and longitude lines being represented by border lines as shown.

- Denotes one inch spaces on border line of original tracing.

Figure 1. - Ownership map of Brenneman field, Hancock County, W. Va., showing location and status of wells on December 31, 1948.



LEGEND

- Oil well
- ▲ Abandoned oil well
- ▲ Gas-injection well
- ▲ Abandoned gas-injection well
- ★ Gas well
- ★ Dry hole