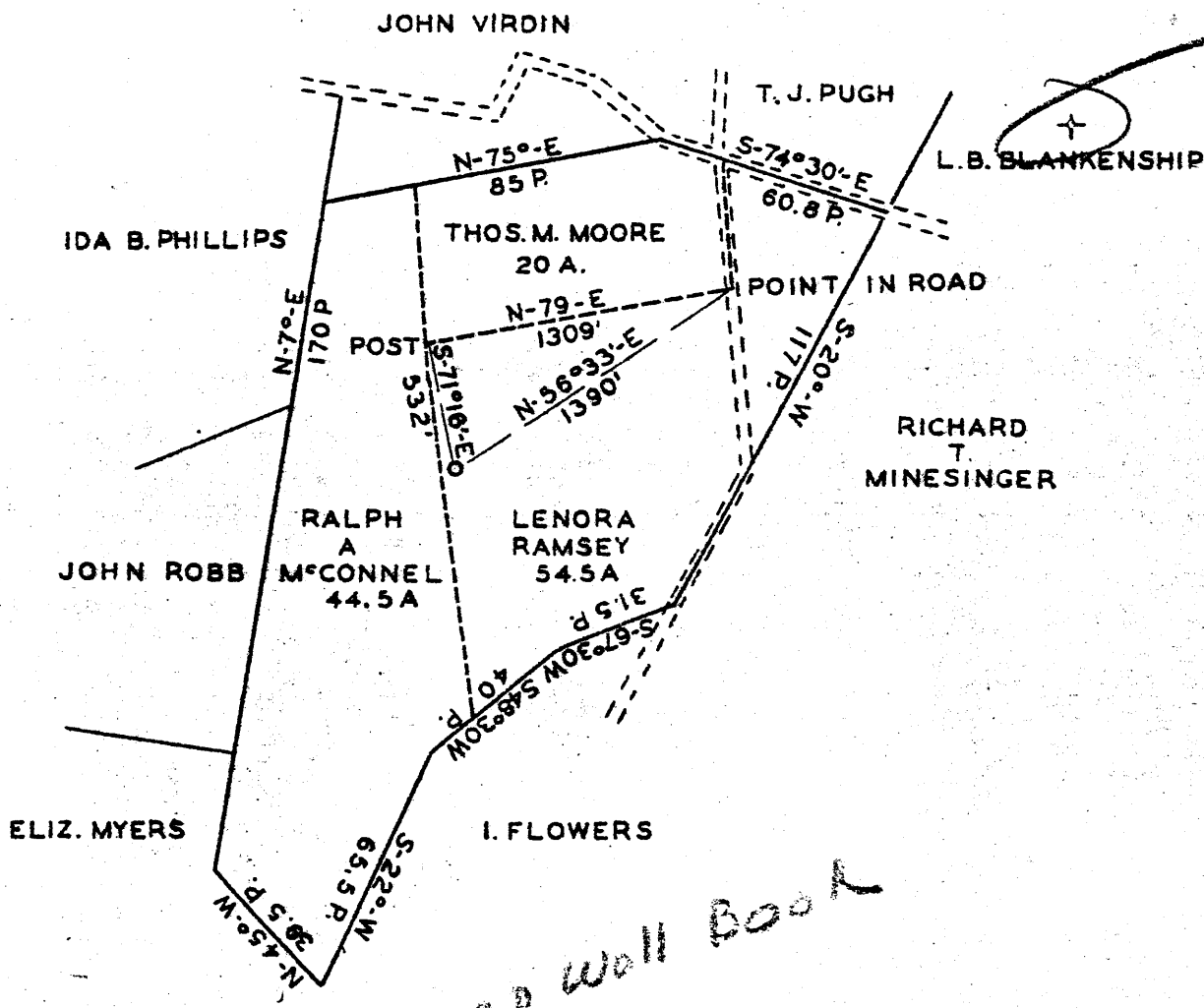


Latitude 40° 35'

Longitude 80° 35'



Log in Deep Well Book

3:41 S
0:93 W

8 EC (A-9)

New Location:
 Drill Deeper:
 Abandonment:

Company JOHN T. GALEY
 Address 2615 GRANT BLDG. PITTSBURGH PA.
 Farm LENORA RAMSEY
 Tract 1 Acres 54.5 Lease No. 16
 Well (Farm) No. 1 Serial No.
 Elevation (Spirit Level) 1069
 Quadrangle WELLSVILLE S.E.
 County HANCOCK District CLAY
 Engineer Tom H. Baker
 Engineer's Registration No.
 File No. Drawing No.
 Date MAY 8 1942 Scale 1" = 800'
TOTAL COMBINED ACREAGE 1348.5

STATE OF WEST VIRGINIA
 DEPARTMENT OF MINES
 OIL AND GAS DIVISION
 CHARLESTON
WELL LOCATION MAP
 File No. HAN-41

+ Denotes location of well on United States Topographic Maps, scale 1 to 62,500, latitude and longitude lines being represented by border lines as shown.
 - Denotes one inch spaces on border line of original tracing.

same place T.C. 6-0-3 Deep Well

LENORA RAMSEY NO. 1 WELL.

Clay District, Hancock County, W. Va.
 By John T. Galey et al., Pittsburgh, Pa.
 Drilled under permit Han-41; Wellsville Quadrangle.
 Elevation, 1072' L. (derrick floor).
 T. D., 4829', SLM.
 Located: 3.35 mi. S. of 40° 35' and 0.9 mi. W. of 80° 35'.
 Contractor: W. H. Larrick.
 Drillers: A. G. Amerine, H. F. Wester, and Frank Lolathan.
 Tool Dressers: Fred Hartwig, G. R. Chandler, and C. R. Bode.
 Commenced: June 6, 1942; completed, Oct. 3, 1942.
 Production: Oriskany, 4771-4774'.
 Well starts 13' below horizon of U. F. Coal.
 Casing record: 14", 18'; 10", 588'; 8", 1130'; 4600', reduced hole;
 2" tubing, Eve., 4774.5', on wall and anchor packer.
 Oil sample taken by bailer at depth of 4790' before shot.
 Record to Martens from Galey Jan. 25, 1943, and to RCT from former,
 same date.

	Top.	Bottom.
Surface	0'	3'
Clay <i>Conemaugh</i>	3'	5'
Shale (6" shell at 7')	5'	35'
Shale, red and gray (water, 40'; stood 18' from top)	35'	45'
Slate, gray	45'	65'
Slate, black <i>Allegheny</i>	65'	80'
Slate, gray	80'	90'
Sand (water, 140'; left at 101'--came back and stands there)	90'	140'
Slate, black	140'	150'
Sand	150'	230'
Slate, white	230'	245'
Slate, gray	245'	354'
✓ Coal <i>Pottsville</i>	354'	355'
Slate, black	355'	391'
✓ Coal	391'	392'
Slate, black	392'	410'
Slate, gray	410'	430'
Slate, white	430'	435'
Shale, gray	435'	440'
Slate, black	440'	490'
Sand	490'	494'
Slate, gray	494'	535'
Slate, black	535'	567'
Lime shell	567'	572'
Slate, black	572'	580'
Slate, white	580'	588'
Sand, gray - ?	588'	594'
Shells, gray	594'	884'
✓ Slate, black - <i>Coffee Sh.</i>	884'	908'
✓ Sand, gray (show gas, 909-914') (SLM, 908') - <i>Berea</i>	908'	966'
Slate, white	966'	1080'
Shale, red	1080'	1100'
Shale, white	1100'	1210'
Lime shell	1210'	1222'
Shale, gray	1222'	1285'
Lime, dark	1285'	1300'

(OVER)

LENORA RAMSEY NO. 1 WELL (Continued).

	Top.	Bottom.
Slate, gray	1300	1340
Shells, gray	1340	1975
Slate, black	1975	1985
Shale, brown	1985	2200
Shells, gray	2200	2250
Lime shells, gray	2250	2270
Slate, brown	2270	2310
Slate and shells, gray	2310	2495
Lime shells, gray	2495	2515
Shale, gray	2515	2710
Shale, brown	2710	2525
Shale, brown	2710	2725
Slate, black	2725	2750
Shells, gray	2750	2765
Slate, black	2765	2795
Slate, gray	2795	2830
Shells, gray	2830	2850
Slate, black	2850	2900
Slate, gray	2900	2945
Shells, gray	2945	3000
Shale, black	3000	3365
Shale, brown	3365	3400
Slate, white	3400	3440
Slate, gray	3440	3570
Slate, brown	3570	3580
Slate, gray	3580	3800
Shale, black	3800	3850
Slate, gray	3850	3960
Shale, black	3960	3975
Slate, gray	3975	4000
Shale, black	4000	4080
Shale, brown	4080	4105
Slate, gray	4105	4145
Shale, Cinnamon	4145	4435
Shale, black, hard	4435	4445
Shale, brown	4445	4478
Shell, hard	4478	4480
Shale, black (gas, 4530, 4532, 4539, 4542') (pocket blew out) (cave cemented with river sand and cement)		4480 - 4565
Shell		4565 - 4568
Shale, black		4568 - 4570
Lime, hard (SIM, 4570') } 463		4570 - 4768
Sand, white (gas and show amber oil, 4771-4774') (SIM, 4768') } ORSK		4768 - 4797
Sand, gray 4797-4820		4797 - 4829
Total depth		4829

✓ Lime - HDAG 4820 -

485

STATE OF WEST VIRGINIA
DEPARTMENT OF MINES
OIL AND GAS WELLS DIVISION

RECEIVED
FEB - 9 1981

AFFIDAVIT OF PLUGGING AND FILLING WELL GAS DIVISION
DEPT. OF MINES

AFFIDAVIT SHOULD BE MADE IN TRIPPLICATE. ONE COPY MAILED TO THE DEPARTMENT, ONE COPY TO BE RETAINED BY THE WELL OPERATOR AND THE THIRD COPY (AND EXTRA COPIES IF REQUIRED) SHOULD BE MAILED TO EACH COAL OPERATOR AT THEIR RESPECTIVE ADDRESSES.

Walter Herron
COAL OPERATOR OR OWNER
R. D. 2
New Cumberland, W. Va. 20647
ADDRESS
Same
COAL OPERATOR OR OWNER
ADDRESS
Same
LEASE OR PROPERTY OWNER
ADDRESS

John T. Galey
NAME OF WELL OPERATOR
R. D. #4
Somerset, Pa. 15501
COMPLETE ADDRESS
February 4, 19 81
WELL AND LOCATION
Clay District
Hancock County
Well No. 1 (47-029-0041-P)
Walter Herron (formerly Lenora Ramsey) Farm

STATE INSPECTOR SUPERVISING PLUGGING Phillip L. Tracy

AFFIDAVIT

STATE OF WEST VIRGINIA,
County of Hancock } ss:

William E. McClenethan and Tom Rockhold
being first duly sworn according to law depose and say that they are experienced in the work of plugging and filling oil and gas wells and were employed by John T. Galey, well operator, and participated in the work of plugging and filling the above well, that said work was commenced on the 29th day of January, 19 81, and that the well was plugged and filled in the following manner:

SAND OR ZONE RECORD FORMATION	FILLING MATERIAL	PLUGS USED SIZE & KIND	CASING	
			CSG PULLED	CSG LEFT IN
Oriskany, Onondaga				
Marcellus & Ohio Shale	Jell by Halliburton T.D. to 2166'			
Ohio Shale	Halliburton- 30 sacks cement 2166' to 2066'	30 sacks cement from 2166' to 2066'	2166'- 2 3/8"	2609' - 2 3/8"
Ohio Shale	Jell by Halliburton 2066' - 1000'			
Berea 908'-966'	Halliburton- 50 sacks cement 1000' - 900'	50 sacks cement from 1000' to 900'	1130' - 8" 588'- 10"	
	Jell by Halliburton 900' - 450'			
Coal 354'-55' & 391'-2'	Halliburton 130 sacks cement 450' - 334' +	130 sacks cement from 450' to 334'		
Clay & Shale	Jell by Halliburton 334' - 50'			
Clay & Shale	Halliburton 75 sacks cement 50'+ into cellar	75 sacks cement from 50' to into cellar		18' - 13"
COAL SEAMS				
(NAME) 392'-91'	Halliburton 130 sacks cement			
(NAME) 355'-54'	450' to 334' + 4 1/2" casing 10' into			
(NAME)	9' above and 3' above ground level with welded bead on tag showing			
(NAME)	Permit Number 47-029-0041-P filled to top with cement.			

and that the work of plugging and filling said well was completed on the 4th day of Feb., 19 81.

And further deponents saith not.

Sworn to and subscribed before me this 4th day of Feb, 19 81.

My commission expires:

April 14, 1982

William E. McClenethan
Tom Rockhold
Phillip L. Tracy

Notary Public.
029-0041-P
Permit No. _____