

40°37'30"

Latitude

80°37'30"

Longitude

2.67s
1.03w

Topo Location

7.5' Loc. _____ 15' Loc. _____
_____ (calc.) _____

Company RJ Braden Co

Farm CE Brenneman # 72

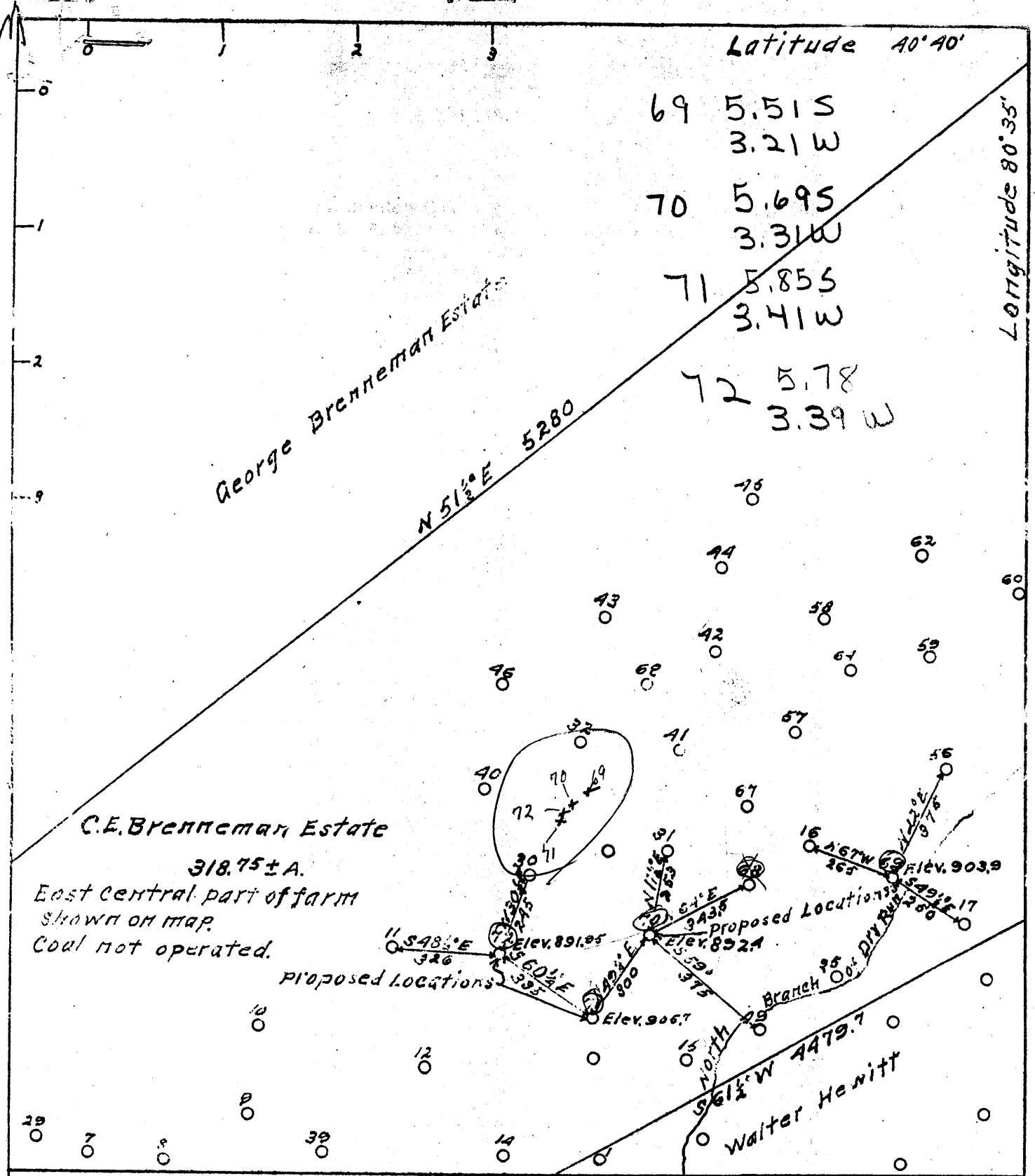
15' Quad _____
(sec.)

7.5' Quad Woodsboro

District Grant

WELL LOCATION PLAT

County 029 Permit 28



Company R.J. Braach Co.
 Address Marietta, Ohio
 Farm C.E. Brenneman Estate
 Tract One Acres 318.75± Lease No.
 Well (Farm) No. 6 Serial No.
 Quadrangle Wellsville
 County Hancock
 District Grant
 Engineer A.B. Morris
 Engineer's Registration No. 916
 File No. Drawing No. Eleven
 Date April 4, 1940
 Scale 1 inch = 100 Feet

STATE OF WEST VIRGINIA
 Department of Mines
 Oil and Gas Division
 Charleston
WELL LOCATION MAP
 File No. HAN-25-26-27-28
 WELLS 69-70-71-72
 + Denotes location of well on
 United States Topographic
 Maps, scale 1 to 62,500, latitude
 and longitude lines being
 represented by border lines
 as shown.
 - Denotes one inch spaces on
 border line of original
 tracing.
 25 & 27 ABD - 9/5
 26 & 28 ABD - 8/51

WEST VIRGINIA DEPARTMENT OF MINES
OIL & GAS DIVISION
W E L L R E C O R D

Permit No. Han-26
Wellsville Quad.

Oil Well

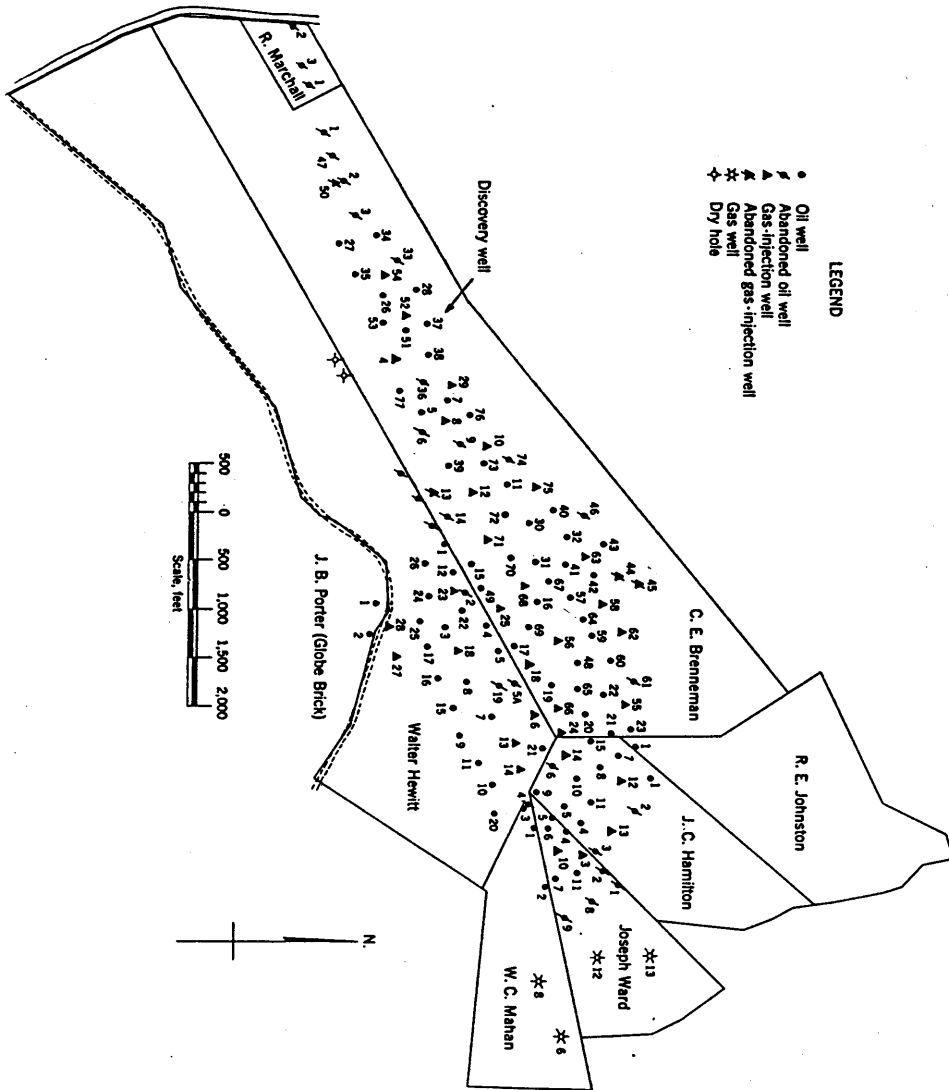
Company R. J. Braden Co.
Address R.D.3, Marietta, Ohio
Farm G. G. Brenneeman ACRES -
Location Dry Run
Well No. 72 ELEV. 891.95
District Grant - Hancock County
Surface Mrs. A. E. Mahan
Route, #2, New Cumberland, W. Va.
Mineral -
Commenced August 1940
Completed September 1940
Shot 9/16/40 - Depth 838-849
Oil 1-1/2 bbls. 1st 24 hrs.
Water -

CASING & TUBING
8-1/4 88
6-1/4 615

Top Soil				
& Slate	s		0	50
Sand	gr s		50	65
Slate	dk s		65	165
Sand	gr fm		165	250
Slate&Sand	dk s		250	450
Sand	wh s		450	485
Slate	dk s		485	570
Lime &				
Sand Shells	dk fm		570	810
Slate	bk s		810	831
Berea Sand	bn s		831	849
Pay			838	849
Total Depth				883

Shot with 40 Qts. Nitro by Marietta Torpedo Co.

Figure 1. - Ownership map of Brenneman field, Hancock County, W. Va., showing location and status of wells on December 31, 1948.



- LEGEND**
- Oil well
 - ▲ Abandoned oil well
 - ▲ Gas-injection well
 - ▲ Abandoned gas-injection well
 - ★ Gas well
 - ★ Dry hole