

40°37'30"

Latitude

80°37'30"

Longitude

2.52s
.56w

Topo Location

7.5' Loc. _____ 15' Loc. _____
_____ (calc.) _____

Company RJ Beadon Co

Farm JC Hamilton #14

15' Quad _____
(sec.)

7.5' Quad Wellsville

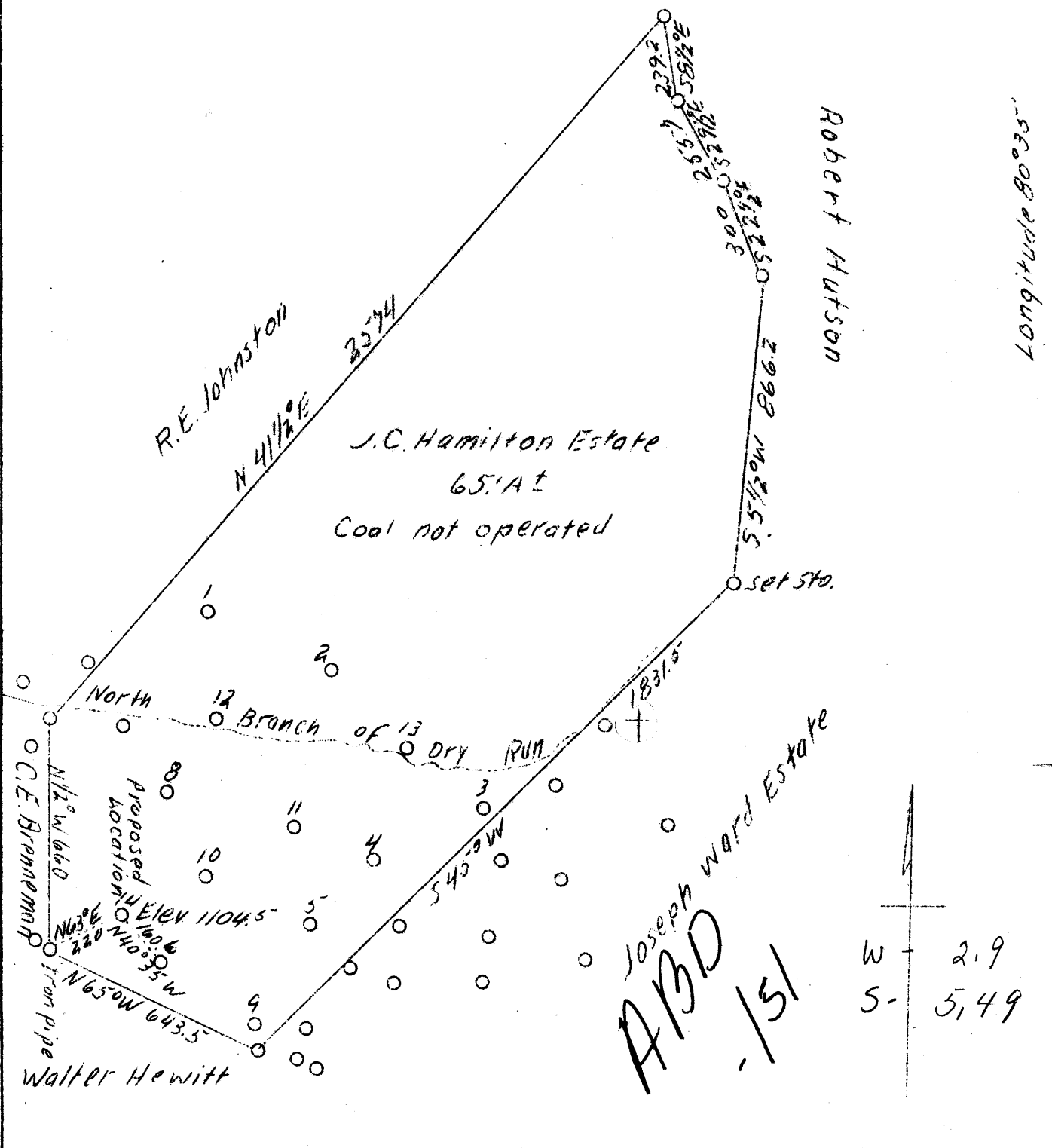
District Grant

WELL LOCATION PLAT

County 029 Permit 20

Latitude 40° 40'

Longitude 80° 35'



Company	R. J. Braden Company
Address	Marietta, Ohio
Farm	J. C. Hamilton Estate
Tract	1
Acres	65.1 plus
Well (Farm) No.	14
Quadrangle	Wellsville
Elevation (SL)	-
County	Hancock
District	Grant
Engineer	W. H. Ramp
Eng. Reg. No.	386
Drawing No.	Two
Date	July 5, 1939
Scale	1" = 400'

STATE OF WEST VIRGINIA
 Department of Mines
 OIL & GAS DIVISION
 Charleston

WELL LOCATION MAP

File No. H01-20

x Denotes location of well on U. S. Topographic Maps, scale 1 to 62,500, latitude and longitude lines being represented by border lines as shown.

- Denotes one inch spaces on border line of original tracing.

WEST VIRGINIA DEPARTMENT OF MINES

OIL & GAS DIVISION

WELL RECORD

Permit No. Han-20

Oil Well

Wellsville Quad.

CASING & TUBING

Company R. J. Braden Co.
 Address Rathbone Add., Marietta, Ohio
 Farm J. C. Hamilton ACRES 65
 Location Dry Run
 Well No. 14 ELEV. 1104.5.
 District Grant - Hancock County
 Surface & Mineral Chas. Stevens, Congo, W. Va.
 Commenced July 25, 1939
 Drilling completed Aug. 3, 1939
 Open Flow -
 Oil Pressure well
 Water -

6-1/4 766

Packer - Parmaco
 Size - 6-1/4 x 2
 Depth Set - 1010

No coal

Formation Color ^{HAT} 5 Top Base Result Formation Color ^{HAT} 5 Top Base Result

Clay & Shale	s	0	310
Sand	brn s	310	400
Shale & Slate	s	400	600
Sand	wh h	600	615
Slate	blue s	615	700
Sand	wh h	700	755
Slate	gr fm	755	1010
Slate	blk s	1010	1032
Sand	wh h	1032	1052

Figure 1. - Ownership map of Brenneman field, Hancock County, W. Va., showing location and status of wells on December 31, 1948.

