

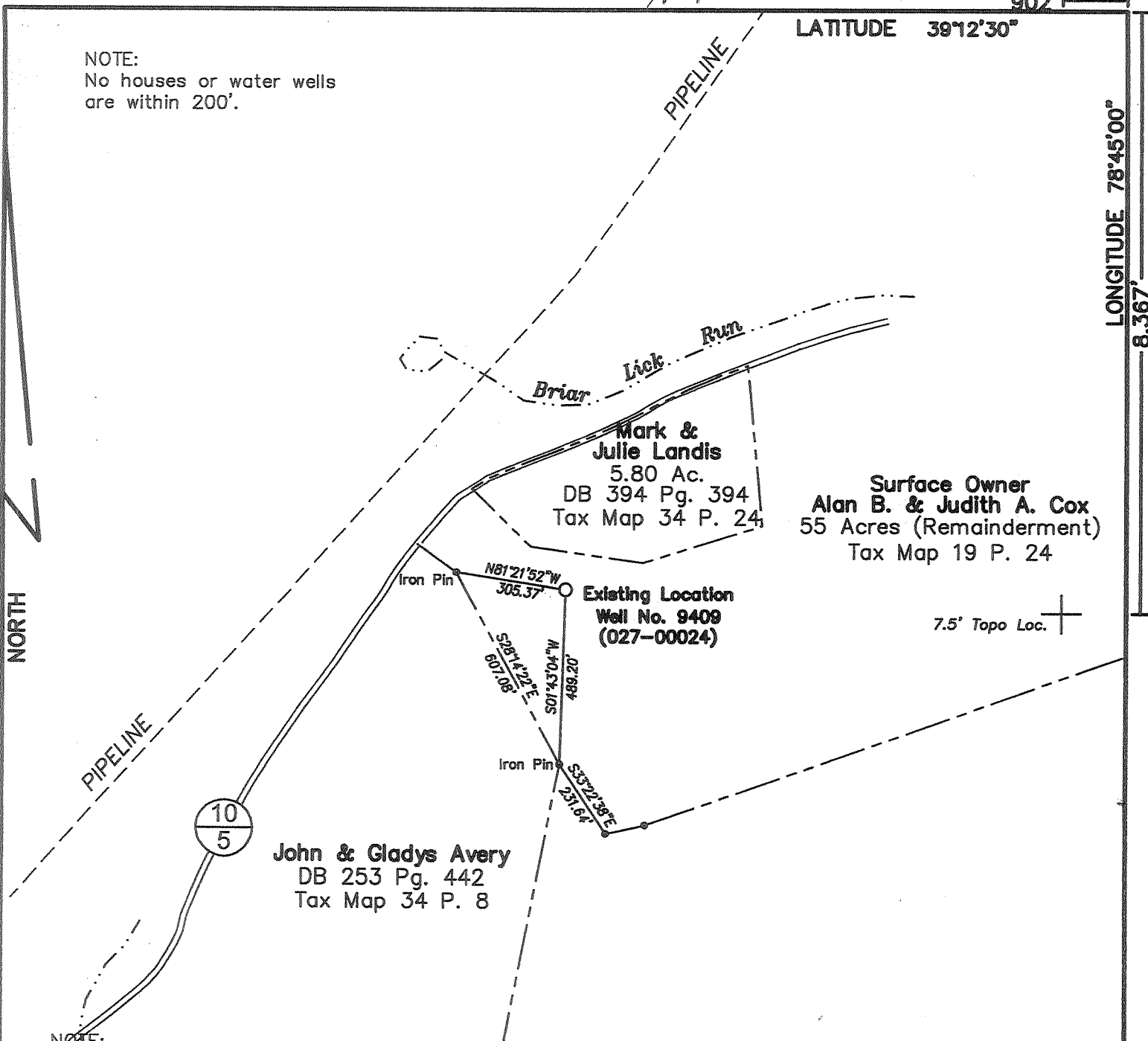
902'

LATITUDE 39°12'30"

LONGITUDE 78°45'00"  
8,367'

NOTE:  
No houses or water wells  
are within 200'.

NORTH



Surface Owner  
Alan B. & Judith A. Cox  
55 Acres (Remainderment)  
Tax Map 19 P. 24

Existing Location  
Well No. 9409  
(027-00024)

John & Gladys Avery  
DB 253 Pg. 442  
Tax Map 34 P. 8

NOTE:  
This map is for well location  
only and does not represent  
a complete property survey.

All wells within 1200' are as shown

(+) DENOTES LOCATION OF WELL ON UNITED STATES TOPOGRAPHIC MAPS

Coordinates Well No. 9409  
WV-N Nad83 U.S. Feet  
N 250,546.67  
E 2,180,260.31

FILE NO. \_\_\_\_\_  
DRAWING NO. \_\_\_\_\_  
SCALE 1" = 400'  
MINIMUM DEGREE OF  
ACCURACY 1 in 200  
PROVEN SOURCE OF  
ELEVATION \_\_\_\_\_  
GPS CP No. 38 Elevation 1625.27'

I THE UNDERSIGNED, HEREBY CERTIFY THAT  
THIS PLAT IS CORRECT TO THE BEST OF MY  
KNOWLEDGE AND BELIEF AND SHOWS ALL THE  
INFORMATION REQUIRED BY LAW AND THE  
REGULATIONS ISSUED AND PRESCRIBED BY  
THE DIVISION OF ENVIRONMENTAL PROTECTION  
(SIGNED) Stephen Parks

R.P.E. 8982 L.L.S. 1707



PLACE SEAL HERE

STATE OF WEST VIRGINIA  
DIVISION OF ENVIRONMENTAL PROTECTION  
OFFICE OF OIL AND GAS



DATE Oct. 10 2004  
OPERATOR'S WELL NO. 9409  
API WELL NO. \_\_\_\_\_

47 - 027 - 00024-F  
STATE COUNTY PERMIT

WELL TYPE: OIL \_\_\_ GAS X LIQUID INJECTION \_\_\_ WASTE DISPOSAL \_\_\_  
(IF "GAS,") PRODUCTION \_\_\_ STORAGE X DEEP \_\_\_ SHALLOW \_\_\_  
LOCATION: ELEVATION 1892.97' WATER SHED Briar Lick Run of Grassy Lick Run  
DISTRICT Sherman COUNTY Hampshire  
QUADRANGLE Sector

SURFACE OWNER Alan B. & Judith A. Cox ACREAGE 49.2  
OIL & GAS ROYALTY OWNER Roy J. Hott et al LEASE ACREAGE 332  
LEASE NO. 60085

PROPOSED WORK: DRILL \_\_\_ CONVERT \_\_\_ DRILL DEEPER \_\_\_ REDRILL \_\_\_ FRACTURE OR  
STIMULATE \_\_\_ PLUG OFF OLD FORMATION \_\_\_ PERFORATE NEW  
FORMATION \_\_\_ OTHER PHYSICAL CHANGE IN WELL (SPECIFY) Storage Recondition

PLUG AND ABANDON \_\_\_ CLEAN OUT AND REPLUG \_\_\_  
TARGET FORMATION Oriskany ESTIMATED DEPTH 6725'  
WELL OPERATOR Columbia Gas Transmission Corp. DESIGNATED AGENT Paul Arnick  
ADDRESS P.O. Box 1273 ADDRESS P.O. Box 1273  
Charleston, WV 25325-1273 Charleston, WV 25325-1273

EEB 17 2006

FORM WV-6

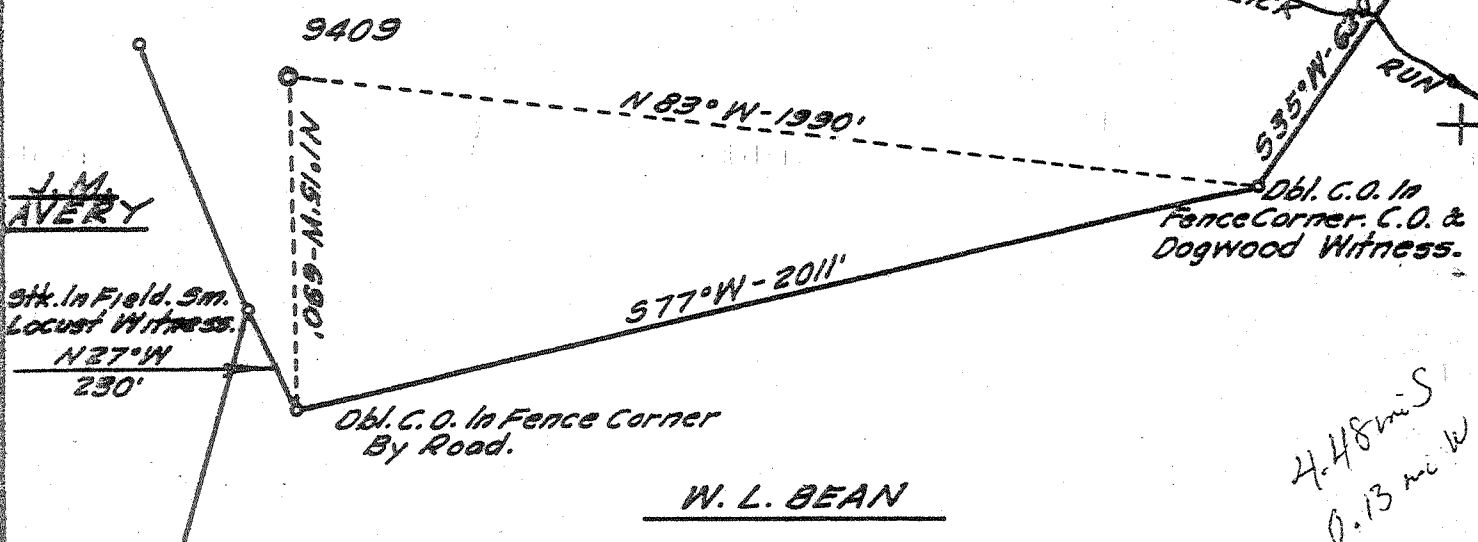
COUNTY NAME HAM  
PERMIT 0024-F

Latitude 39° 15'

Longitude 78° 45'

ROY J. HOTT

W. L. BEAN



4.48 mi S  
0.13 mi W

BENCH MARK DESCRIPTION

U.S.G.S Standard Disk Stamped W.Va. -1920  
In North East Corner Stone Of Roy Saville  
House, 5' Above Ground. Elev. 1544.00'

DEGREE OF ACCURACY

One Part In 200

This Well Is Being Drilled On An 8450  
Drilling Unit.

- Fracture Before 6/5/27
- New Location
- Drill Deeper
- Redrill
- Abandonment

I, the undersigned, hereby certify that this map is correct to the best of my knowledge and belief and shows all the information required by Paragraph 5 of the Rules and Regulations of the Oil and Gas Section of the Mining Laws of West Virginia.

The accuracy of this survey is within the limits and as prescribed in paragraph 5 by the Oil and Gas Division of the Department of Mines Regulations.

PROVEN ELEVATION 1544.00'

Company UNITED FUEL GAS CO.  
 Address CHARLESTON, W. VA.  
 Farm ROY J. HOTT, ET. AL.  
 Tract \_\_\_\_\_ Acres 332 Lease No. 60085  
 Well (Farm) No. \_\_\_\_\_ Serial No. 9409  
 Elevation (Spirit Level) 1891.34' Sector 7.5' quad  
 Quadrangle MOOREFIELD - NE.  
 County HAMPSHIRE District SHERMAN  
 Engineer Robert L. Ferrell  
 Engineer's Registration No. 2529  
 File No. 218-117 Drawing No. \_\_\_\_\_  
 Date AUGUST 2, 1956 Scale 1" = 400'

STATE OF WEST VIRGINIA  
DEPARTMENT OF MINES  
OIL AND GAS DIVISION  
CHARLESTON

WELL LOCATION MAP

FILE NO. HAMP-24

+ Denotes location of well on United States Topographic Maps, scale 1 to 62,500 latitude and longitude lines being represented by border lines as shown.

- Denotes one inch spaces on border line of original tracing.



STATE OF WEST VIRGINIA  
DEPARTMENT OF MINES  
OIL AND GAS DIVISION

Rotary   
Spudder   
Cable Tools   
Storage

Quadrangle Moorefield  
Permit No. HAM-24

WELL RECORD

Oil or Gas Well Gas  
(FIND)

Company United Fuel Gas Company  
Address P.O. Box 1273 Charleston, W. Va.  
Farm Roy J. Hott, et al Acres 845 Merger Size  
Location (waters) Grassy Lick Run  
Well No. 9409 Elev. 1891.34'  
District Sherman County Hampshire  
The surface of tract is owned in fee by \_\_\_\_\_  
Address \_\_\_\_\_  
Mineral rights are owned by Hetzel A. Hott & Lucy A. Hott et al  
Kirby, W. Va. 26729 Address \_\_\_\_\_  
Drilling commenced 9-1-66  
Drilling completed 9-25-66  
Date Shot \_\_\_\_\_ From \_\_\_\_\_ To \_\_\_\_\_  
With \_\_\_\_\_  
Open Flow 1/10ths Water in \_\_\_\_\_ Inch  
1/10ths Merc. in \_\_\_\_\_ Inch  
Volume 3,886,000 - Oriskany Cu. Ft.  
Rock Pressure 2180 lbs. 72 hrs.  
Oil \_\_\_\_\_ bbls., 1st 24 hrs.  
WELL ACIDIZED (DETAILS) \_\_\_\_\_  
WELL FRACTURED (DETAILS) \_\_\_\_\_

Casing and Tubing	Used in Drilling	Left in Well	Packers
16			Kind of Paeker
13 3/8	79' Cemented with 85 sacks neat with 2% Calcium Chloride		Size of
10	1967' Cemented with Litepoz & 110 cu. ft. neat	130 cu. ft. Depth set	
9-5/8"	6382' Cemented with 300 cu. ft. neat		
6 1/2"			
4 1/2"			
3"			Perf. top
2"	6682'	6682'	Perf. bottom
Liners Used			Perf. top
			Perf. bottom

Attach copy of cementing record.  
CASING CEMENTED \_\_\_\_\_ SIZE \_\_\_\_\_ No. Ft. \_\_\_\_\_ Da \_\_\_\_\_  
Amount of cement used (bags) \_\_\_\_\_  
Name of Service Co. \_\_\_\_\_  
COAL WAS ENCOUNTERED AT \_\_\_\_\_ FEET \_\_\_\_\_ INCHES  
\_\_\_\_\_ FEET \_\_\_\_\_ INCHES \_\_\_\_\_ FEET \_\_\_\_\_ INCHES  
\_\_\_\_\_ FEET \_\_\_\_\_ INCHES \_\_\_\_\_ FEET \_\_\_\_\_ INCHES

RESULT AFTER TREATMENT (Initial open Flow or bbls.) \_\_\_\_\_  
ROCK PRESSURE AFTER TREATMENT \_\_\_\_\_ HOURS  
Fresh Water \_\_\_\_\_ Feet \_\_\_\_\_ Salt Water \_\_\_\_\_ Feet \_\_\_\_\_  
Producing Sand \_\_\_\_\_ Depth \_\_\_\_\_

Formation	Color	Hard or Soft	Top	Bottom	Oil, Gas or Water	Depth	Remarks
Surface			0	70	Hole wet at	146'	
Sand			70	200			
Sand and Shale			200	3930	Gas	6402-6418'	
Shale			3930	4175			
Grey Silty Shale			4175	5160	Gas	6485-6505	
Marcellus			5160	6246			
Needmore			6246	6370	Show gas	6625-6628'	
Oriskany			6370	6456			
Needmore			6456	6472	Show gas	6663-6668'	
Oriskany			6472	6672			
Helderberg			6672		Test before acidized - 47/10 W 4" 1,		
Total Depth			6725'		Acidized 9-28-66 with 12,000 gallons Hcl, 149,488 std. cu. ft. nitrogen, overflushed with 42 bbls. water Final open flow after acidized - 2" spring gauge thru 4" 3,886 M		
				485			
			6246				
			1891				
			4355				
					LOGS RUN: Gamma Ray Density Differential Temperature		
					NOTE: Gamma Ray Log depths, all measurements from RKB.		

Deep Well